



**TRILOBITE
TESTING, INC**

DRILL STEM TEST REPORT

Vincent Oil Corp.
155 N. Market ,Ste.700
Wichita Ks. 67202
ATTN: To Dudgeon

21-28s-21w Ford Ks.
Ringwald #1-21
Job Ticket: 57929 **DST#: 1**
Test Start: 2015.12.16 @ 22:57:56

GENERAL INFORMATION:

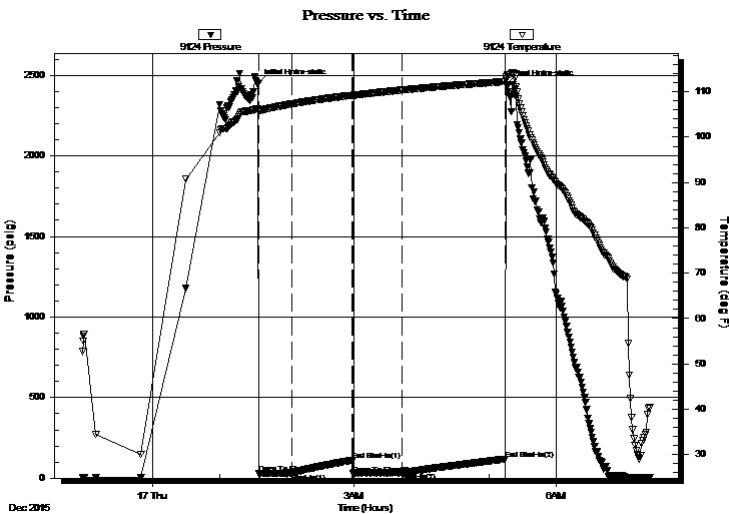
Formation: **Conglomerate**
Deviated: No Whipstock: ft (KB)
Time Tool Opened: 01:35:11
Time Test Ended: 07:23:26
Interval: **5001.00 ft (KB) To 5050.00 ft (KB) (TVD)**
Total Depth: 5050.00 ft (KB) (TVD)
Hole Diameter: 7.88 inches Hole Condition: Poor
Test Type: Conventional Bottom Hole (Initial)
Tester: Gary Pevoteaux
Unit No: 80
Reference Elevations: 2405.00 ft (KB)
2392.00 ft (CF)
KB to GR/CF: 13.00 ft

Serial #: 9124 Outside

Press@RunDepth: 33.29 psig @ 5002.00 ft (KB) Capacity: 8000.00 psig
Start Date: 2015.12.16 End Date: 2015.12.17 Last Calib.: 2015.12.17
Start Time: 22:58:01 End Time: 07:23:25 Time On Btm: 2015.12.17 @ 01:34:26
Time Off Btm: 2015.12.17 @ 05:15:26

TEST COMMENT: IF:Weak blow . 1 - 2 1/2".
IS:No blow .
FF:Weak blow . 2 - 3 1/2".
FS:No blow .

PRESSURE SUMMARY



| Time (Min.) | Pressure (psig) | Temp (deg F) | Annotation |
|-------------|-----------------|--------------|----------------------|
| 0 | 2449.58 | 106.36 | Initial Hydro-static |
| 1 | 29.52 | 105.80 | Open To Flow (1) |
| 30 | 31.38 | 107.29 | Shut-In(1) |
| 84 | 111.59 | 109.23 | End Shut-In(1) |
| 85 | 25.78 | 109.21 | Open To Flow (2) |
| 129 | 33.29 | 110.39 | Shut-In(2) |
| 220 | 118.78 | 112.26 | End Shut-In(2) |
| 221 | 2439.89 | 113.27 | Final Hydro-static |

Recovery

| Length (ft) | Description | Volume (bbl) |
|-------------|----------------------|--------------|
| 40.00 | Drig.mud w oil specs | 0.20 |
| 0.00 | 260 ft.of GIP | 0.00 |
| | | |
| | | |
| | | |

Gas Rates

| Choke (inches) | Pressure (psig) | Gas Rate (Mcf/d) |
|----------------|-----------------|------------------|
| | | |



**TRILOBITE
TESTING, INC**

DRILL STEM TEST REPORT

FLUID SUMMARY

Vincent Oil Corp.

21-28s-21w Ford Ks.

155 N.Market ,Ste.700
Wichita Ks. 67202

Ringwald #1-21

Job Ticket: 57929

DST#: 1

ATTN: To Dudgeon

Test Start: 2015.12.16 @ 22:57:56

Mud and Cushion Information

Mud Type: Gel Chem

Cushion Type:

Oil API:

deg API

Mud Weight: 9.00 lb/gal

Cushion Length:

ft

Water Salinity:

5800 ppm

Viscosity: 59.00 sec/qt

Cushion Volume:

bbbl

Water Loss: 6.80 in³

Gas Cushion Type:

Resistivity: 0.00 ohm.m

Gas Cushion Pressure:

psig

Salinity: 5800.00 ppm

Filter Cake: 0.20 inches

Recovery Information

Recovery Table

| Length ft | Description | Volume bbbl |
|--------------|----------------------|----------------|
| 40.00 | Drig.mud w oil specs | 0.197 |
| 0.00 | 260 ft.of GIP | 0.000 |

Total Length: 40.00 ft Total Volume: 0.197 bbl

Num Fluid Samples: 0

Num Gas Bombs: 0

Serial #: none

Laboratory Name:

Laboratory Location:

Recovery Comments:

Serial #: 9124

Outside Vincent Oil Corp.

Ringw ald #1-21

DST Test Number: 1

