



TRILOBITE TESTING, INC.

DRILL STEM TEST REPORT

Vincent Oil Corp.
 155 N. Market, Ste. 700
 Wichita Ks. 67202
 ATTN: To Dudgeon

21-28s-21w Ford Ks.
Ringwald #1-21
 Job Ticket: 57930 **DST#: 2**
 Test Start: 2015.12.17 @ 16:25:17

GENERAL INFORMATION:

Formation: **Miss.**
 Deviated: No Whipstock: ft (KB)
 Time Tool Opened: 19:59:32
 Time Test Ended: 02:00:02
 Interval: **5053.00 ft (KB) To 5080.00 ft (KB) (TVD)**
 Total Depth: 5080.00 ft (KB) (TVD)
 Hole Diameter: 7.88 inches Hole Condition: Poor
 Test Type: Conventional Bottom Hole (Reset)
 Tester: Gary Pevoteaux
 Unit No: 80
 Reference Elevations: 2405.00 ft (KB)
 2392.00 ft (CF)
 KB to GR/CF: 13.00 ft

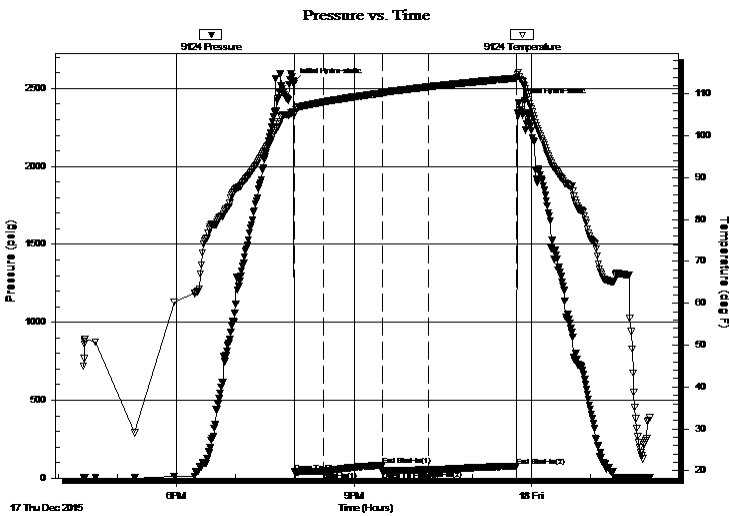
Serial #: 9124

Outside

Press @ Run Depth: 52.32 psig @ 5054.00 ft (KB)
 Start Date: 2015.12.17 End Date: 2015.12.18
 Start Time: 16:25:22 End Time: 02:00:02
 Capacity: 8000.00 psig
 Last Calib.: 2015.12.18
 Time On Btm: 2015.12.17 @ 19:58:17
 Time Off Btm: 2015.12.17 @ 23:47:02

TEST COMMENT: IF: Weak blow . 1 - 2 1/2".
 IS: No blow .
 FF: Weak blow . 1/2 - 1 1/2".
 FS: No blow .

PRESSURE SUMMARY



Time (Min.)	Pressure (psig)	Temp (deg F)	Annotation
0	2541.20	105.65	Initial Hydro-static
2	40.55	105.20	Open To Flow (1)
31	44.06	108.07	Shut-In(1)
91	83.46	110.22	End Shut-In(1)
91	43.76	110.21	Open To Flow (2)
137	52.32	111.68	Shut-In(2)
227	78.03	113.76	End Shut-In(2)
229	2411.31	115.11	Final Hydro-static

Recovery

Length (ft)	Description	Volume (bbl)
70.00	Heavy mud w trace of oil	0.34
0.00	180 ft. of GIP	0.00

* Recovery from multiple tests

Gas Rates

Choke (inches)	Pressure (psig)	Gas Rate (Mcf/d)



**TRILOBITE
TESTING, INC.**

DRILL STEM TEST REPORT

FLUID SUMMARY

Vincent Oil Corp.

21-28s-21w Ford Ks.

155 N.Market ,Ste.700
Wichita Ks. 67202

Ringwald #1-21

Job Ticket: 57930

DST#: 2

ATTN: To Dudgeon

Test Start: 2015.12.17 @ 16:25:17

Mud and Cushion Information

Mud Type: Gel Chem

Cushion Type:

Oil API:

deg API

Mud Weight: 9.00 lb/gal

Cushion Length:

ft

Water Salinity:

8400 ppm

Viscosity: 70.00 sec/qt

Cushion Volume:

bbbl

Water Loss: 8.79 in³

Gas Cushion Type:

Resistivity: 0.00 ohm.m

Gas Cushion Pressure:

psig

Salinity: 84000.00 ppm

Filter Cake: 0.20 inches

Recovery Information

Recovery Table

Length ft	Description	Volume bbl
70.00	Heavy mud w trace of oil	0.344
0.00	180 ft.of GIP	0.000

Total Length: 70.00 ft Total Volume: 0.344 bbl

Num Fluid Samples: 0

Num Gas Bombs: 0

Serial #: none

Laboratory Name:

Laboratory Location:

Recovery Comments:

