

TRILOBITE TESTING, INC.

DRILL STEM TEST REPORT

Ron's Oil Operations Inc
 1889 200th AVE
 Penokee KS 67659
 ATTN: Chris Bean

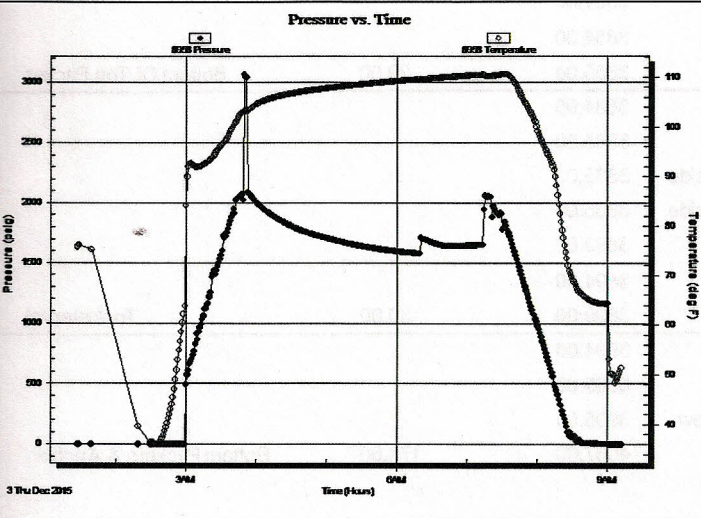
22-9s-24w Graham,KS
Ron Nickelson #22-1
 Job Ticket: 64882 **DST#: 2**
 Test Start: 2015.12.03 @ 01:27:00

GENERAL INFORMATION:

Formation: **LKC "E-F"**
 Deviated: No Whipstock: ft (KB)
 Test Type: Conventional Straddle (Reset)
 Time Tool Opened: 03:50:00 Tester: Cody Bloedorn
 Time Test Ended: 09:12:15 Unit No: 73
 Interval: **3864.00 ft (KB) To 3894.00 ft (KB) (TVD)** Reference Elevations: 2439.00 ft (KB)
 Total Depth: 4056.00 ft (KB) (TVD) 2433.00 ft (CF)
 Hole Diameter: 7.88 inches Hole Condition: Fair KB to GR/CF: 6.00 ft

Serial #: 8958 Below (Straddle)
 Press@RunDepth: psig @ 3905.00 ft (KB) Capacity: 8000.00 psig
 Start Date: 2015.12.03 End Date: 2015.12.03 Last Calib.: 2015.12.03
 Start Time: 01:27:05 End Time: 09:11:59 Time On Btm:
 Time Off Btm:

TEST COMMENT: 60 - IF- 2 1/2" blow
 45 - IS- No return
 45 - FF- 1/2" blow
 45 - FSI- No return



PRESSURE SUMMARY			
Time (Min.)	Pressure (psig)	Temp (deg F)	Annotation

Recovery		
Length (ft)	Description	Volume (bbl)
129.00	WM - Oil spots, 2%W, 98%M	1.81

Gas Rates			
	Choke (inches)	Pressure (psig)	Gas Rate (Mcf/d)

* Recovery from multiple tests