



TRILOBITE TESTING, INC.

DRILL STEM TEST REPORT

Vincent Oil Corporation

8-28S-21W Ford

155 N Market Ste 700
Wichita, KS 67202

McCaustland 1-8

ATTN: Jim Hall

Job Ticket: 57924

DST#: 1

Test Start: 2016.01.04 @ 15:59:49

GENERAL INFORMATION:

Formation: **Mississippi**

Deviated: No Whipstock: ft (KB)

Time Tool Opened: 18:13:19

Time Test Ended: 01:35:04

Test Type: Conventional Bottom Hole (Initial)

Tester: Leal Cason

Unit No: 74

Interval: 4926.00 ft (KB) To 5022.00 ft (KB) (TVD)

Reference Elevations: 2373.00 ft (KB)

Total Depth: 5022.00 ft (KB) (TVD)

2360.00 ft (CF)

Hole Diameter: 7.88 inches Hole Condition: Good

KB to GR/CF: 13.00 ft

Serial #: 8525 Inside

Press @ Run Depth: 92.71 psig @ 4927.00 ft (KB)

Capacity: 8000.00 psig

Start Date: 2016.01.04

End Date: 2016.01.05

Last Calib.: 1899.12.30

Start Time: 15:59:50

End Time: 01:35:04

Time On Btm: 2016.01.04 @ 18:12:49

Time Off Btm: 2016.01.04 @ 23:16:04

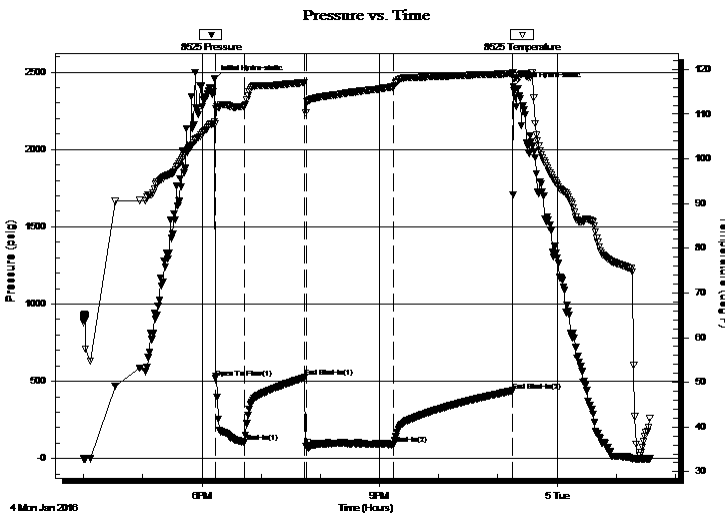
TEST COMMENT: IF: Strong Blow, BOB in 45 seconds. GTS in 6 minutes, Gauged & Caught Sample

IS: No Blow Back

FF: Strong Blow, BOB & GTS Immediate, Guaged Gas

FSI: No Blow Back

PRESSURE SUMMARY



Time (Min.)	Pressure (psig)	Temp (deg F)	Annotation
0	2454.09	108.26	Initial Hydro-static
1	520.25	107.94	Open To Flow (1)
31	103.00	111.76	Shut-In(1)
92	524.33	117.01	End Shut-In(1)
93	80.12	110.27	Open To Flow (2)
182	92.71	116.11	Shut-In(2)
302	438.56	119.03	End Shut-In(2)
304	2406.51	118.10	Final Hydro-static

Recovery

Length (ft)	Description	Volume (bbl)
0.00	4657 GIP	0.00
247.00	GCM 10%G 90%M	1.80

Gas Rates

	Choke (inches)	Pressure (psig)	Gas Rate (Mcf/d)
First Gas Rate	0.50	62.00	515.37
Last Gas Rate	0.25	12.00	41.88
Max. Gas Rate	0.50	62.00	515.37



**TRILOBITE
TESTING, INC.**

DRILL STEM TEST REPORT

FLUID SUMMARY

Vincent Oil Corporation

8-28S-21W Ford

155 N Market Ste 700
Wichita, KS 67202

McCaustland 1-8

Job Ticket: 57924

DST#: 1

ATTN: Jim Hall

Test Start: 2016.01.04 @ 15:59:49

Mud and Cushion Information

Mud Type: Gel Chem

Cushion Type:

Oil API:

deg API

Mud Weight: 9.00 lb/gal

Cushion Length:

ft

Water Salinity:

ppm

Viscosity: 67.00 sec/qt

Cushion Volume:

bbbl

Water Loss: 7.98 in³

Gas Cushion Type:

Resistivity: ohm.m

Gas Cushion Pressure:

psig

Salinity: 5900.00 ppm

Filter Cake: 0.02 inches

Recovery Information

Recovery Table

Length ft	Description	Volume bbl
0.00	4657 GIP	0.000
247.00	GCM 10%G 90%M	1.798

Total Length: 247.00 ft Total Volume: 1.798 bbl

Num Fluid Samples: 0

Num Gas Bombs: 0

Serial #:

Laboratory Name:

Laboratory Location:

Recovery Comments:

Serial #: 8525

Inside

Vincent Oil Corporation

McCausland 1-8

DST Test Number: 1

