

# DIAMOND TESTING GENERAL REPORT

**Jake Fahrenbruch, Tester**

Cell: (620) 282-8977 / Office: (800) 542-7313



## TEST INFORMATION

<b>Well Name</b>	Mull-Heyen #1-24
<b>Company Name</b>	LD Drilling, Inc.
<b>Formation</b>	DST #5, Arbuckle, 3588'-3655'
<b>Test Type</b>	Bottom-Hole w/safety joint
<b>Surface Location</b>	Sec 24-22s-12w-Stafford Co.-KS
<b>KB Elevation (SL)</b>	1849.000
<b>Gauge Name</b>	5951
<b>Start Test Date</b>	2016/04/01
<b>Start Test Time</b>	03:47:00
<b>Final Test Date</b>	2016/04/01
<b>Final Test Time</b>	11:14:00
<b>Job Number</b>	F431
<b>Contact</b>	LD Davis
<b>Site Contact</b>	Kim Shoemaker

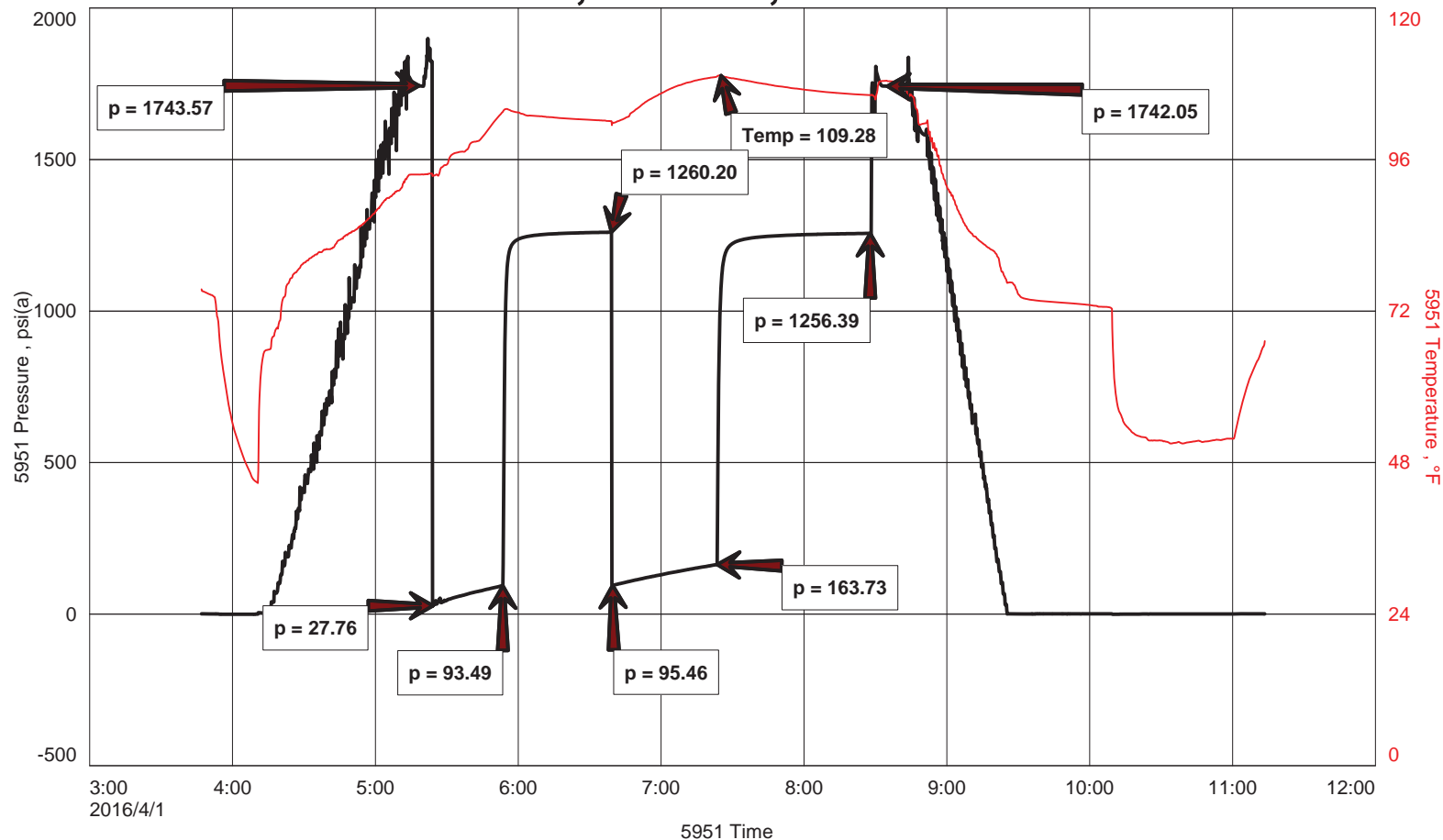
## TEST RESULTS

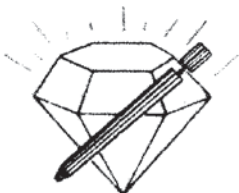
Initial flow, fair blow, increased to BOB in 16.5 minutes. No blowback.  
 Final flow, fair blow, increased to BOB in 28 minutes. Surface blowback, died.

**TOTAL FLUID RECOVERED: 320'**

- 65' SOCWM 4% oil, 30% wtr, 66% mud
- 255' Salt Water 100% wtr
- Chlorides: 25,000 PPM
- RW: .32 ohm @ 60 F
- PH: 8.0

## MULL-HEYEN #1-24, DST #5, ARBUCKLE 3588'-3655'





**DIAMOND TESTING**  
 P.O. Box 157  
 HOISINGTON, KANSAS 67544  
 (800) 542-7313

**DRILL-STEM TEST TICKET**

FILE: MULL-HEYEN 12075

ON LOCATION:	<u>03:30</u>
START RECORDERS:	<u>03:47</u>
STOP RECORDERS:	<u>11:14</u>

Company LD DRILLING, INC. Lease & Well No. MULL-HEYEN #1-24  
 Contractor LD DRILLING Charge to LD DRILLING INC.  
 Elevation 1849 KB Formation ARBUCKLE Effective Pay \_\_\_\_\_ Ft. Ticket No. F431  
 Date 4-1-16 Sec. 24 Twp. 22S Range 12W County STAFFORD State K.S.  
 Test Approved By KEM SHOENAKER Diamond Representative JAKE FAHRENBRUCH

Formation Test No. 5 Interval Tested from 3588 ft. to 3655 ft. Total Depth 3655 ft.  
 Packer Depth 3583 ft. Size 6 3/4 in. Packer depth \_\_\_\_\_ ft. Size 6 3/4 in.  
 Packer Depth 3588 ft. Size 6 3/4 in. Packer depth \_\_\_\_\_ ft. Size 6 3/4 in.  
 Depth of Selective Zone Set \_\_\_\_\_

Top Recorder Depth (Inside) 3561 ft. Recorder Number 5951 Cap. 5000 P.S.I.  
 Bottom Recorder Depth (Outside) 3593 ft. Recorder Number 5584 Cap. 5000 P.S.I.  
 Below Straddle Recorder Depth \_\_\_\_\_ ft. Recorder Number \_\_\_\_\_ Cap. \_\_\_\_\_ P.S.I.

Mud Type CHROMA Viscosity 54 (1" @ 100) Drill Collar Length \_\_\_\_\_ ft. I.D. 2 1/4 in.  
 Weight 9.0 Water Loss 12.8 cc. Weight Pipe Length \_\_\_\_\_ ft. I.D. 2 7/8 in.  
 Chlorides 10000 P.P.M. Drill Pipe Length 3560 ft. I.D. 3 1/2 in.  
 Jars: Make STERLING Serial Number #5 S. Joint Test Tool Length 28 ft. Tool Size 3 1/2-IF in.  
 Did Well Flow? \_\_\_\_\_ Reversed Out \_\_\_\_\_ Anchor Length 67 ft. Size 4 1/2-FH in.  
 Main Hole Size 7 7/8 Tool Joint Size 4 1/2 IN in. Surface Choke Size 1 in. Bottom Choke Size 5/8 in.

Blow: 1st Open: FAER BLOW, INC TO BOB IN 16 1/2 MINUTES.  
 2nd Open: FAER BLOW, INC TO BOB IN 28 MIN. SURFACE BLOWN, DIED.

Recovered 65 ft. of SOC W/M 4" ODL, 30" WTR, 66" MUD  
 Recovered 255 ft. of SALT WATER 100" WTR  
 Recovered \_\_\_\_\_ ft. of \_\_\_\_\_  
 Recovered \_\_\_\_\_ ft. of \_\_\_\_\_

Recovered \_\_\_\_\_ ft. of \*Tore up both packers\* Price Job \_\_\_\_\_  
 Recovered \_\_\_\_\_ ft. of \_\_\_\_\_ Reg Packer x 2 Other Charges \_\_\_\_\_

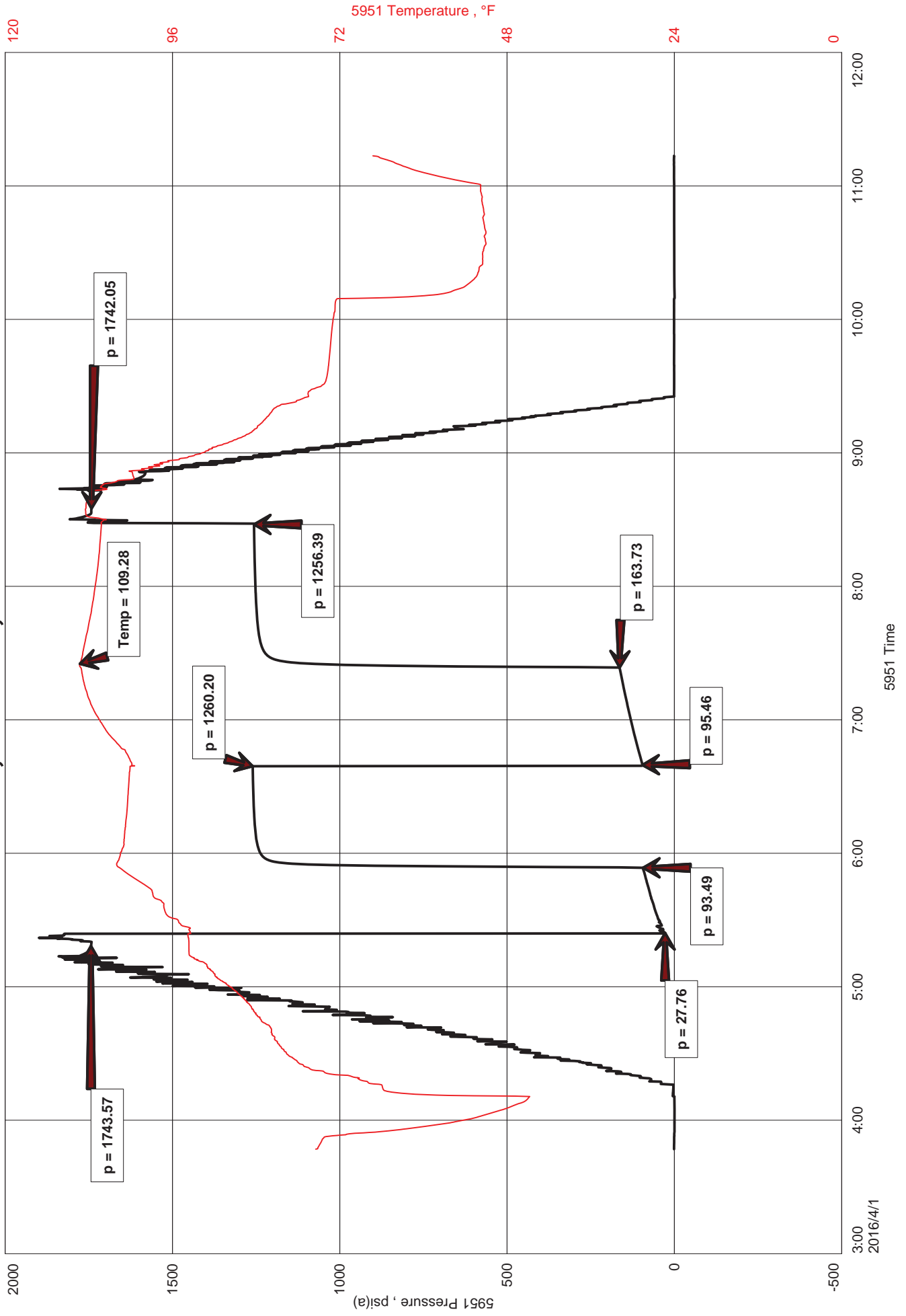
Remarks: TOTAL RECOVERED FLUID: 320' S. JOINT  
RW: .32 L @ 60°F 84 MWT (PROV)  
CHLORIDES: 25000 PPM PH: 8.0  
 Total \_\_\_\_\_

Time Set Packer(s) 05:25 A.M. P.M. Time Started Off Bottom 08:25 A.M. P.M. Maximum Temperature 109°F

Initial Hydrostatic Pressure..... (A) 1744 P.S.I.  
 Initial Flow Period..... Minutes 30 (B) 28 P.S.I. to (C) 93 P.S.I.  
 Initial Closed In Period..... Minutes 45 (D) 1260 P.S.I.  
 Final Flow Period..... Minutes 45 (E) 95 P.S.I. to (F) 164 P.S.I.  
 Final Closed In Period..... Minutes 60 (G) 1256 P.S.I. Thanks!  
 Final Hydrostatic Pressure..... (H) 1742 P.S.I. Jake Fahrenbruch

Diamond Testing shall not be liable for damages of any kind to the property or personnel of the one for whom a test is made or for any loss suffered or sustained, directly or indirectly, through the use of its equipment, or its statement or opinion concerning the result of any test. Tools lost or damaged in the hole shall be paid for at cost by the party for whom the test is made.

# MULL-HEYEN #1-24, DST #5, ARBUCKLE 3588'-3655'







**DIAMOND TESTING**  
 P.O. Box 157  
 HOISINGTON, KANSAS 67544  
 (800) 542-7313

TIME ON: 03:47  
 TIME OFF: 11:14

**DRILL-STEM TEST TICKET**  
 FILE: MULL-HEYEN1DST5

Company LD Drilling Inc. Lease & Well No. Mull-Heyen #1-24  
 Contractor LD Drilling Charge to LD Drilling Inc.  
 Elevation 1849' KB Formation ARBUCKLE Effective Pay \_\_\_\_\_ Ft. Ticket No. F431  
 Date 4-1-16 Sec. 24 Twp. 22s S Range 12w W County Stafford State KANSAS  
 Test Approved By Kim Shoemaker Diamond Representative Jake Fahrenbruch

Formation Test No. 5 Interval Tested from 3588 ft. to 3655 ft. Total Depth 3655 ft.  
 Packer Depth 3583 ft. Size 6 3/4 in. Packer depth ----- ft. Size 6 3/4 in.  
 Packer Depth 3588 ft. Size 6 3/4 in. Packer depth ----- ft. Size 6 3/4 in.  
 Depth of Selective Zone Set -----

Top Recorder Depth (Inside) 3561 ft. Recorder Number 5591 Cap. 5000 P.S.I.  
 Bottom Recorder Depth (Outside) 3593 ft. Recorder Number 5584 Cap. 5000 P.S.I.  
 Below Straddle Recorder Depth ----- ft. Recorder Number ----- Cap. ----- P.S.I.

Mud Type CHEMICAL Viscosity 54 (1# LCM) Drill Collar Length 0 ft. I.D. 2 1/4 in.  
 Weight 9.0 Water Loss 12.8 cc. Weight Pipe Length 0 ft. I.D. 2 7/8 in.  
 Chlorides 10,000 P.P.M. Drill Pipe Length 3,560 ft. I.D. 3 1/2 in.  
 Jars: Make STERLING Serial Number ----- Test Tool Length 28 ft. Tool Size 3 1/2-IF in.  
 Did Well Flow? NO Reversed Out NO Anchor Length 67 ft. Size 4 1/2-FH in.  
 Main Hole Size 7 7/8 Tool Joint Size 4 1/2 XH in. <sup>34' perfs</sup> Surface Choke Size 1 in. Bottom Choke Size 5/8 in.

Blow: 1st Open: Fair blow, increased to BOB in 16.5 minutes.  
 2nd Open: Fair blow, increased to BOB in 28 minutes. Surface blowback, died.

Recovered 65 ft. of SOCWM 4% oil, 30% wtr, 66% mud  
 Recovered 255 ft. of Salt Water 100% wtr  
 Recovered \_\_\_\_\_ ft. of \_\_\_\_\_  
 Recovered \_\_\_\_\_ ft. of \_\_\_\_\_  
 Recovered \_\_\_\_\_ ft. of \_\_\_\_\_  
 Recovered \_\_\_\_\_ ft. of \_\_\_\_\_

Remarks: TOTAL RECOVERED FLUID: 320'  
Chlorides: 25,000 PPM  
RW: .32 ohm @ 60 F PH: 8.0

Time Set Packer(s) 05:25 <sup>A.M.</sup> P.M. Time Started Off Bottom 08:25 <sup>A.M.</sup> P.M. Maximum Temperature 109 F

Initial Hydrostatic Pressure..... (A) 1744 P.S.I.  
 Initial Flow Period..... Minutes 30 (B) 28 P.S.I. to (C) 93 P.S.I.  
 Initial Closed In Period..... Minutes 45 (D) 1260 P.S.I.  
 Final Flow Period..... Minutes 45 (E) 95 P.S.I. to (F) 164 P.S.I.  
 Final Closed In Period..... Minutes 60 (G) 1256 P.S.I.  
 Final Hydrostatic Pressure..... (H) 1742 P.S.I.

Diamond Testing shall not be liable for damages of any kind to the property or personnel of the one for whom a test is made or for any loss suffered or sustained, directly or indirectly, through the use of its equipment, or its statement or opinion concerning the result of any test. Tools lost or damaged in the hole shall be paid for at cost by the party for whom the test is made.