



**TRILOBITE TESTING, INC.**

# DRILL STEM TEST REPORT

Daystar Petroleum, Inc

**36-8s-19w Rooks**

522 N. Main St.  
PO Box 560  
Eureka, Ks 67045-0506  
ATTN: Matt Osborn, Brad Rin

**Marston Unit #1-36**

Job Ticket: 65453 **DST#: 4**  
Test Start: 2016.04.04 @ 01:25:41

## GENERAL INFORMATION:

Formation: **LKC E-F**  
Deviated: No Whipstock: ft (KB)  
Time Tool Opened: 03:17:21  
Time Test Ended: 08:06:35  
Interval: **3274.00 ft (KB) To 3300.00 ft (KB) (TVD)**  
Total Depth: 3300.00 ft (KB) (TVD)  
Hole Diameter: 7.85 inches Hole Condition: Fair  
Test Type: Conventional Bottom Hole (Reset)  
Tester: Ray Schwager  
Unit No: 77  
Reference Elevations: 2007.00 ft (KB)  
1999.00 ft (CF)  
KB to GR/CF: 8.00 ft

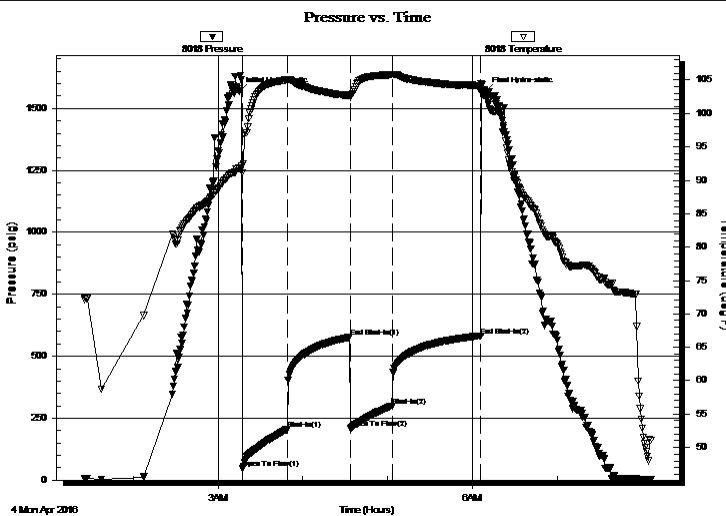
## Serial #: 8018

Inside

Press @ Run Depth: 299.45 psig @ 3275.00 ft (KB) Capacity: 8000.00 psig  
Start Date: 2016.04.04 End Date: 2016.04.04 Last Calib.: 2016.04.04  
Start Time: 01:25:41 End Time: 08:06:35 Time On Btm: 2016.04.04 @ 03:14:51  
Time Off Btm: 2016.04.04 @ 06:09:20

TEST COMMENT: 30-IFP- w k to strg in 5 min  
45-ISIP- no bl  
30-FFP- w k to strg in 25 min  
60-FSIP- no bl

## PRESSURE SUMMARY



Time (Min.)	Pressure (psig)	Temp (deg F)	Annotation
0	1569.67	91.81	Initial Hydro-static
3	45.82	91.18	Open To Flow (1)
34	205.10	105.02	Shut-In(1)
79	576.87	102.64	End Shut-In(1)
79	208.56	102.44	Open To Flow (2)
109	299.45	105.79	Shut-In(2)
171	582.67	104.13	End Shut-In(2)
175	1566.58	102.91	Final Hydro-static

## Recovery

Length (ft)	Description	Volume (bbl)
500.00	Water	5.92
90.00	MW 25%M75%W	1.26

## Gas Rates

Choke (inches)	Pressure (psig)	Gas Rate (Mcf/d)

\* Recovery from multiple tests



**TRILOBITE  
TESTING, INC.**

# DRILL STEM TEST REPORT

**FLUID SUMMARY**

Daystar Petroleum, Inc

**36-8s-19w Rooks**

522 N. Main St.  
PO Box 560  
Eureka, Ks 67045-0506  
ATTN: Matt Osborn, Brad Rin

**Marston Unit #1-36**

Job Ticket: 65453

**DST#: 4**

Test Start: 2016.04.04 @ 01:25:41

## Mud and Cushion Information

Mud Type: Gel Chem

Mud Weight: 9.00 lb/gal

Viscosity: 51.00 sec/qt

Water Loss: 7.20 in<sup>3</sup>

Resistivity: ohm.m

Salinity: 4000.00 ppm

Filter Cake: 1.00 inches

Cushion Type:

Cushion Length: ft

Cushion Volume: bbl

Gas Cushion Type:

Gas Cushion Pressure: psig

Oil API:

Water Salinity: 71000 ppm

deg API

## Recovery Information

Recovery Table

Length ft	Description	Volume bbl
500.00	Water	5.921
90.00	MW 25%M75%W	1.262

Total Length: 590.00 ft      Total Volume: 7.183 bbl

Num Fluid Samples: 0

Num Gas Bombs: 0

Serial #:

Laboratory Name:

Laboratory Location:

Recovery Comments: RW .11 @67F

