



## DRILL STEM TEST REPORT

Prepared For: **YOUNGER ENERGY COM;PANY**

9415 EAST HARRY STREET SUITE 403  
BUILDING 400  
WICHITA, KANSAS 67207-5083

ATTN:

### **STRECKER B 8**

Start Date: 2016.02.16 @ 04:00:00

End Date: 2016.02.16 @ 19:56:00

Job Ticket #: 01211                      DST #: 1

Eagle Testers  
1309 Patton Road    Great Bend, Kansas 67530  
620-791-7394

Printed: 2016.02.16 @ 20:27:34



# DRILL STEM TEST REPORT

YOUNGER ENERGY COMPANY

9415 EAST HARRY STREET SUITE 403 BUILDING  
400  
WICHITA, KANSAS 67207-5083  
ATTN:

**STRECKER B 8**

Job Ticket: 01211

**DST#: 1**

Test Start: 2016.02.16 @ 04:00:00

## GENERAL INFORMATION:

Formation: **TORONTO**

Deviated: No Whipstock: ft (KB)

Time Tool Opened: 05:30:00

Time Test Ended: 19:56:00

Test Type: Conventional Bottom Hole (Initial)

Tester: GENE BUDIG

Unit No: 1

**Interval: 2822.00 ft (KB) To 2880.00 ft (KB) (TVD)**

Reference Elevations: 1753.00 ft (KB)

Total Depth: 2880.00 ft (KB) (TVD)

1745.00 ft (CF)

Hole Diameter: 7.88 inches Hole Condition: Fair

KB to GR/CF: 8.00 ft

## Serial #: 9119

Press@RunDepth: 128.32 psia @ ft (KB)

Capacity: psia

Start Date: 2016.02.16

End Date: 2016.02.16

Last Calib.: 1899.12.30

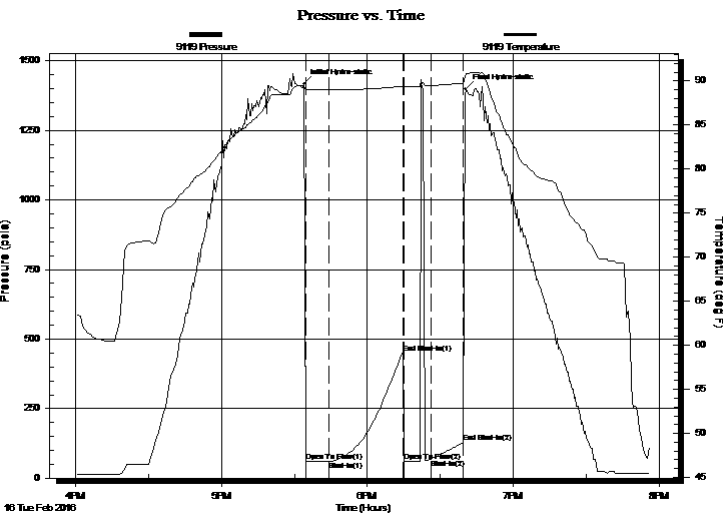
Start Time: 16:00:00

End Time: 19:56:00

Time On Btm: 2016.02.16 @ 17:34:00

Time Off Btm: 2016.02.16 @ 18:40:30

**TEST COMMENT:** 1ST OPENING 10 MINUTES WEAK SURFACE BLOW FOR 8 MINUTES AND DIED  
1ST SHUT-IN 30 MINUTES-NO BLOW BACK  
2ND OPENING 10 MINUTES-NO BLOW-FLUSHED TOOL=GOOD SURGE-NO HELP  
2ND SHUT-IN 10 MINUTES NO BLOW BACK



## PRESSURE SUMMARY

Time (Min.)	Pressure (psia)	Temp (deg F)	Annotation
0	1417.99	89.45	Initial Hydro-static
1	58.94	89.07	Open To Flow (1)
10	59.24	88.99	Shut-In(1)
41	451.37	89.39	End Shut-In(1)
41	61.70	89.30	Open To Flow (2)
52	68.88	89.49	Shut-In(2)
66	128.32	89.76	End Shut-In(2)
67	1399.76	90.80	Final Hydro-static

## Recovery

Length (ft)	Description	Volume (bbl)
10.00	OIL SPECKED MUD	0.14

## Gas Rates

	Choke (inches)	Pressure (psia)	Gas Rate (Mcf/d)



# DRILL STEM TEST REPORT

YOUNGER ENERGY COMPANY

9415 EAST HARRY STREET SUITE 403 BUILDING  
400  
WICHITA, KANSAS 67207-5083  
ATTN:

**STRECKER B 8**

Job Ticket: 01211

**DST#: 1**

Test Start: 2016.02.16 @ 04:00:00

## GENERAL INFORMATION:

Formation: **TORONTO**

Deviated: No Whipstock: ft (KB)

Time Tool Opened: 05:30:00

Time Test Ended: 19:56:00

Test Type: Conventional Bottom Hole (Initial)

Tester: GENE BUDIG

Unit No: 1

**Interval: 2822.00 ft (KB) To 2880.00 ft (KB) (TVD)**

Reference Elevations: 1753.00 ft (KB)

Total Depth: 2880.00 ft (KB) (TVD)

1745.00 ft (CF)

Hole Diameter: 7.88 inches Hole Condition: Fair

KB to GR/CF: 8.00 ft

## Serial #: 9139

Press@RunDepth: 128.32 psia @ ft (KB)

Capacity: psia

Start Date: 2016.02.16

End Date: 2016.02.16

Last Calib.: 1899.12.30

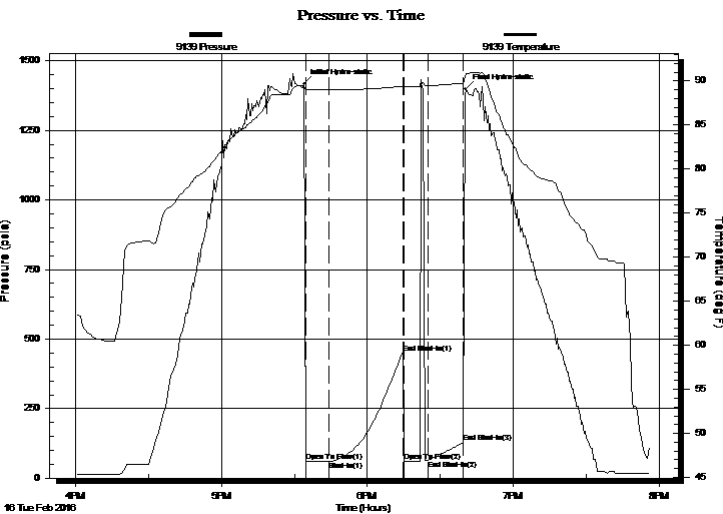
Start Time: 16:00:00

End Time: 19:56:00

Time On Btm: 2016.02.16 @ 17:34:00

Time Off Btm: 2016.02.16 @ 18:40:30

**TEST COMMENT:** 1ST OPENING 10 MINUTES WEAK SURFACE BLOW FOR 8 MINUTES AND DIED  
1ST SHUT-IN 30 MINUTES-NO BLOW BACK  
2ND OPENING 10 MINUTES-NO BLOW-FLUSHED TOOL=GOOD SURGE-NO HELP  
2ND SHUT-IN 10 MINUTES NO BLOW BACK



## PRESSURE SUMMARY

Time (Min.)	Pressure (psia)	Temp (deg F)	Annotation
0	1417.99	89.45	Initial Hydro-static
1	58.94	89.07	Open To Flow (1)
10	59.24	88.99	Shut-In(1)
41	451.37	89.39	End Shut-In(1)
41	61.70	89.30	Open To Flow (2)
51	65.08	89.48	End Shut-In(2)
66	128.32	89.76	End Shut-In(3)
67	1399.76	90.80	Final Hydro-static

## Recovery

Length (ft)	Description	Volume (bbl)
10.00	OIL SPECKED MUD	0.14

## Gas Rates

	Choke (inches)	Pressure (psia)	Gas Rate (Mcf/d)



# DRILL STEM TEST REPORT

TOOL DIAGRAM

YOUNGER ENERGY COMPANY

9415 EAST HARRY STREET SUITE 403 BUILDING  
400  
WICHITA, KANSAS 67207-5083  
ATTN:

**STRECKER B 8**

Job Ticket: 01211

**DST#: 1**

Test Start: 2016.02.16 @ 04:00:00

## Tool Information

Drill Pipe:	Length: 2811.00 ft	Diameter: 3.80 inches	Volume: 39.43 bbl	Tool Weight: 2000.00 lb
Heavy Wt. Pipe:	Length: 0.00 ft	Diameter: 2.76 inches	Volume: 0.00 bbl	Weight set on Packer: 20000.00 lb
Drill Collar:	Length: 0.00 ft	Diameter: 2.25 inches	Volume: 0.00 bbl	Weight to Pull Loose: 66000.00 lb
			<u>Total Volume: 39.43 bbl</u>	Tool Chased 0.00 ft
Drill Pipe Above KB:	18.00 ft			String Weight: Initial 42000.00 lb
Depth to Top Packer:	2822.00 ft			Final 42000.00 lb
Depth to Bottom Packer:	ft			
Interval between Packers:	57.14 ft			
Tool Length:	86.14 ft			
Number of Packers:	2	Diameter: 6.75 inches		

Tool Comments:

Tool Description	Length (ft)	Serial No.	Position	Depth (ft)	Accum. Lengths
------------------	-------------	------------	----------	------------	----------------

Shut In Tool	5.00			2798.00	
Hydraulic tool	5.00			2803.00	
Jars	7.00			2810.00	
Safety Joint	2.00		Fluid	2812.00	
Top Packer	5.00			2817.00	
Packer	5.00			2822.00	29.00 Bottom Of Top Packer
Anchor	5.00			2827.00	
Change Over Sub	0.75			2827.75	
Drill Pipe	30.64			2858.39	
Change Over Sub	0.75			2859.14	
Anchor	15.00			2874.14	
Recorder	0.00	9119	Inside	2874.14	
Recorder	0.00	9139	Outside	2874.14	
Bullnose	5.00			2879.14	57.14 Anchor Tool

**Total Tool Length: 86.14**



# DRILL STEM TEST REPORT

FLUID SUMMARY

YOUNGER ENERGY COMPANY

9415 EAST HARRY STREET SUITE 403 BUILDING  
400  
WICHITA, KANSAS 67207-5083  
ATTN:

**STRECKER B 8**

Job Ticket: 01211

**DST#: 1**

Test Start: 2016.02.16 @ 04:00:00

## Mud and Cushion Information

Mud Type: Gel Chem  
Mud Weight: 9.00 lb/gal  
Viscosity: sec/qt  
Water Loss: 8.80 in<sup>3</sup>  
Resistivity: ohm.m  
Salinity: 5000.00 ppm  
Filter Cake: 1.00 inches

Cushion Type:  
Cushion Length: ft  
Cushion Volume: bbl  
Gas Cushion Type:  
Gas Cushion Pressure: psia

Oil API: deg API  
Water Salinity: ppm

## Recovery Information

Recovery Table

Length ft	Description	Volume bbl
10.00	OIL SPECKED MUD	0.140

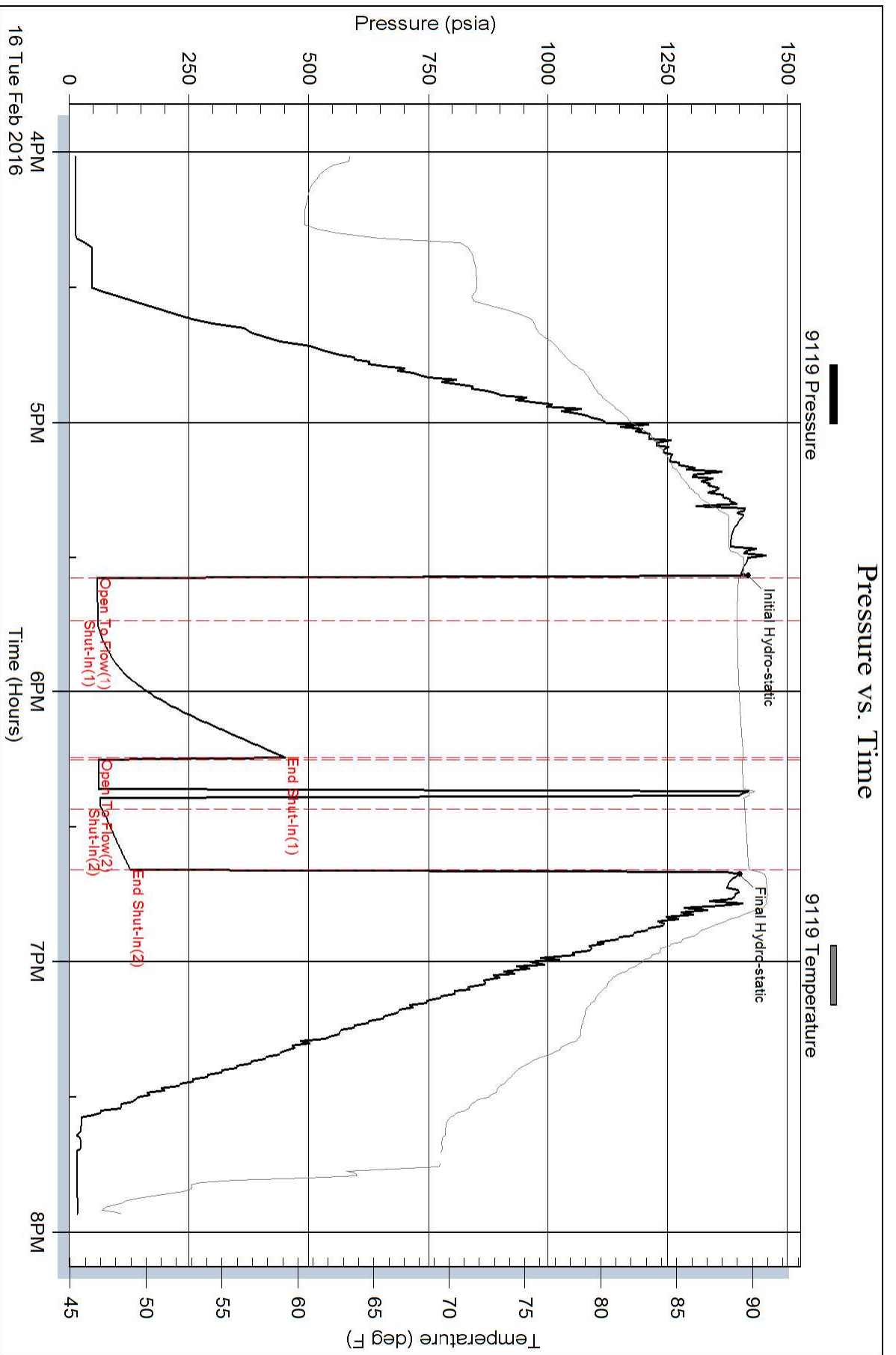
Total Length: 10.00 ft      Total Volume: 0.140 bbl

Num Fluid Samples: 0      Num Gas Bombs: 0      Serial #:

Laboratory Name:      Laboratory Location:

Recovery Comments:

### Pressure vs. Time



# Pressure vs. Time

