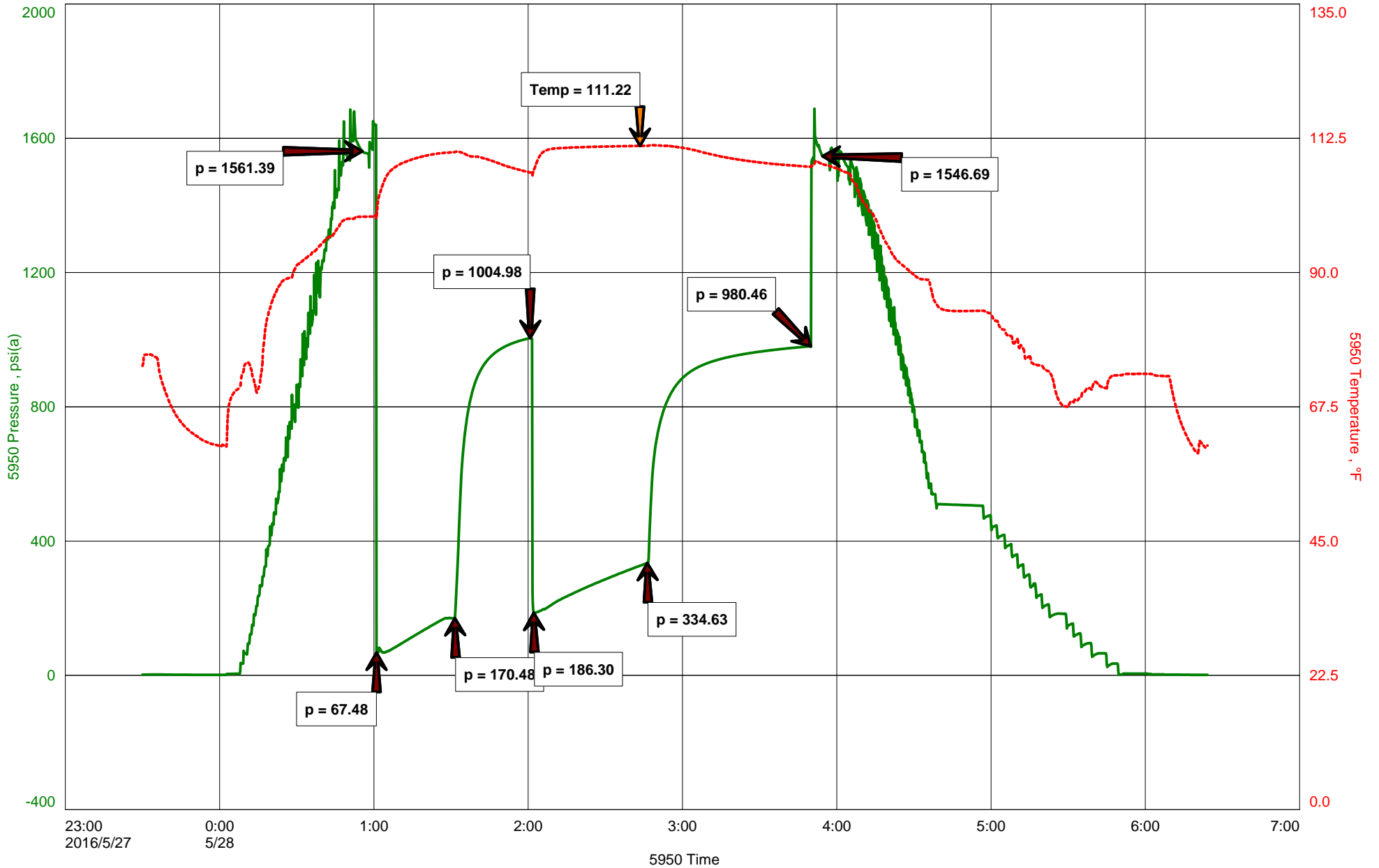
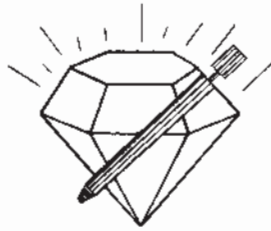


H&D Exploration
Dst #2 Lans 'F' 3256-3273'
Start Test Date: 2016/05/27
Final Test Date: 2016/05/28

Herrman #1
Formation: Dst #2 Lans 'F' 3256-3273'
Pool: Infield
Job Number: P0110

Herrman #1





DIAMOND TESTING
 P. O. Box 157
HOISINGTON, KANSAS 67544
 (316) 653-7550
GAS VOLUME REPORT

Company H&D Exploration Lease & Well No. Herrman #1
 Date 5-28-16 Sec. 8 Twp. 19S Rge. 13W Location _____ County Barton State KS
 Drilling Contractor SouthWind Drilling Rig #3 Formation Lans F DST No. 2
 Remarks: GAS TO SURFACE AT 30 MINUTES INTO INITIAL FLOW PERIOD. GAS DID BURN. SAMPLE TAKEN 30 MINUTES INTO FINAL FLOW PERIOD.

INITIAL FLOW

Time O'Clock	Orifice Size	Gauge	CF/D
	in.	in.	
	in.	in.	
	in.	in.	
	in.	in.	
	in.	in.	
	in.	in.	
	in.	in.	
	in.	in.	
	in.	in.	
	in.	in.	
	in.	in.	
	in.	in.	
	in.	in.	
	in.	in.	
	in.	in.	

FINAL FLOW IW

Time O'Clock	Orifice Size	Gauge	CF/D
5	1/8 in.	25 in.	2.64
10	1/8 in.	33 in.	3.04
15	1/8 in.	31 in.	2.94
20	1/8 in.	28 in.	2.79
25	1/8 in.	25 in.	2.64
30	1/8 in.	25 in.	2.64
35	1/8 in.	23 in.	2.55
40	1/8 in.	20 in.	2.36
45	1/8 in.	18 in.	2.24
	in.	in.	



Hoisington, Kansas

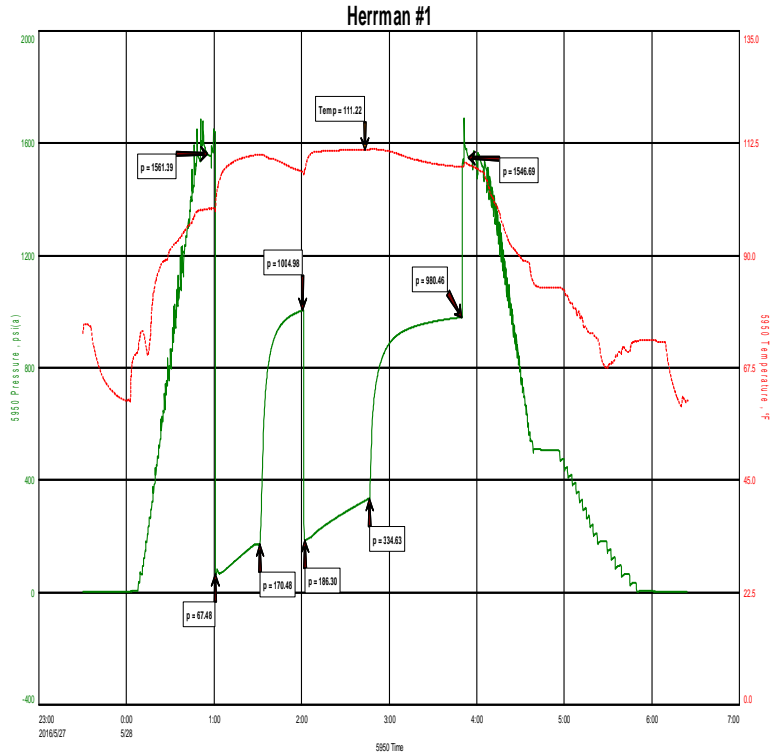
Michael Carroll
620-617-0368
carroll.dtlc@gmail.com

General Information

Company Name H&D Exploration

Contact	Mitch Driscoll
Well Name	Herrman #1
Unique Well ID	Dst #2 Lans 'F' 3256-3273'
Surface Location	Sec 8-19s-13w Barton County
Field	Walnut Creek
Well Type	Vertical
Test Type	Drill Stem Test
Well Operator	H&D Exploration

Formation	Dst #2 Lans 'F' 3256-3273'
Well Fluid Type	01 Oil
Test Purpose	Initial Test
Start Test Date	2016/05/27
Start Test Time	23:30:00
Final Test Time	06:25:00
Job Number	P0110
Report Date	2016/05/28
Prepared By	Michael Carroll



TEST RECOVERY

Remarks Recovery:

Gas To Surface

1043' Clean Oil Gravity 24 @ 60 Degrees

50' GCWCMO 12%G 46%O 12%W 30%M

Total Fluid: 1093'

Tool Sample: 100%O



DIAMOND TESTING
P.O. Box 157
HOISINGTON, KANSAS 67544
(800) 542-7313
DRILL-STEM TEST TICKET
FILE: HERRMAN#1DST#2

TIME ON: 2330 5-27
TIME OFF: 0625 5-28

Company H&D EXPLORATION Lease & Well No. HERRMAN #1
Contractor SOUTHWIND DRLG RIG 3 Charge to H&D EXPLORATION
Elevation 1856 Formation LANS F Effective Pay _____ Ft. Ticket No. P0110
Date 5-28-16 Sec. 8 Twp. _____ 19 S Range _____ 13 W County BARTON State KANSAS
Test Approved By JIM MUSGROVE Diamond Representative Michael Carroll

Formation Test No. 2 Interval Tested from 3256 ft. to 3273 ft. Total Depth 3273 ft.
Packer Depth 3251 ft. Size 6 3/4 in. Packer depth _____ ft. Size 6 3/4 in.
Packer Depth 3256 ft. Size 6 3/4 in. Packer depth _____ ft. Size 6 3/4 in.

Depth of Selective Zone Set _____
Top Recorder Depth (Inside) 3244 ft. Recorder Number 5950 Cap. 5000 P.S.I.
Bottom Recorder Depth (Outside) 3260 ft. Recorder Number 0230 Cap. 5000 P.S.I.
Below Straddle Recorder Depth _____ ft. Recorder Number _____ Cap. _____ P.S.I.

Mud Type Chem Viscosity 47 Drill Collar Length _____ ft. I.D. 2 1/4 in.
Weight 9.1 Water Loss 12.2 cc. Weight Pipe Length _____ ft. I.D. 2 7/8 in.
Chlorides 16000 P.P.M. Drill Pipe Length 3231 ft. I.D. 3 1/2 in.
Jars: Make STERLING Serial Number NA Test Tool Length 25 ft. Tool Size 3 1/2-IF in.
Did Well Flow? NO Reversed Out NO Anchor Length 17 ft. Size 4 1/2-FH in.
Main Hole Size 7 7/8 Tool Joint Size 4 1/2 XH in. Surface Choke Size 1 in. Bottom Choke Size 5/8 in.

Blow: 1st Open: 3"BLOW-BUILT TO BOB IN 45 SECONDS GTS AT 30 MINUTES BBBB
2nd Open: 3"BLOW-BUILT TO BOB IN 1 MINUTE 35 SECONDS GTS THROUGHOUT BBBB

Recovered _____ ft. of GAS TO SURFACE
Recovered 1043 ft. of CLEAN OIL GRAVITY 24 @ 60 DEGREES
Recovered 50 ft. of GCWCMO 12%G 46%O 12%W 30%M
Recovered 1093 ft. of TOTAL FLUID

Recovered _____ ft. of _____	Price Job
Recovered _____ ft. of _____	Other Charges
Remarks: _____	Insurance
TOOL SAMPLE: 100%O	Total

Time Set Packer(s) 1:00A.M. A.M. P.M. Time Started Off Bottom 3:45A.M. A.M. P.M. Maximum Temperature 111
Initial Hydrostatic Pressure..... (A) 1561 P.S.I.
Initial Flow Period..... Minutes 30 (B) 67 P.S.I. to (C) 170 P.S.I.
Initial Closed In Period..... Minutes 30 (D) 1005 P.S.I.
Final Flow Period..... Minutes 45 (E) 186 P.S.I. to (F) 335 P.S.I.
Final Closed In Period..... Minutes 60 (G) 980 P.S.I.
Final Hydrostatic Pressure..... (H) 1547 P.S.I.

Diamond Testing shall not be liable for damages of any kind to the property or personnel of the one for whom a test is made or for any loss suffered or sustained, directly or indirectly, through the use of its equipment, or its statement or opinion concerning the result of any test. Tools lost or damaged in the hole shall be paid for at cost by the party for whom the test is made.