



DRILL STEM TEST REPORT

Prepared For: **American Warrior , Inc**

PO Box 399
Garden City, KS 67846

ATTN: Scott Corsair, Jason

Williams #12

36-19s-22w Ness,KS

Start Date: 2016.03.20 @ 12:40:10

End Date: 2016.03.20 @ 19:40:49

Job Ticket #: 64923 DST #: 1

Trilobite Testing, Inc

PO Box 362 Hays, KS 67601

ph: 785-625-4778 fax: 785-625-5620

Printed: 2016.03.21 @ 11:50:11



TRILOBITE TESTING, INC

DRILL STEM TEST REPORT

American Warrior, Inc

36-19s-22w Ness, KS

PO Box 399
Garden City, KS 67846

Williams #12

Job Ticket: 64923

DST#: 1

ATTN: Scott Corsair, Jason

Test Start: 2016.03.20 @ 12:40:10

GENERAL INFORMATION:

Formation: **Miss**

Deviated: No Whipstock: ft (KB)

Time Tool Opened: 14:50:35

Time Test Ended: 19:40:49

Test Type: Conventional Bottom Hole (Initial)

Tester: Ray Schwager

Unit No: 70

Interval: 4363.00 ft (KB) To 4371.00 ft (KB) (TVD)

Reference Elevations: 2258.00 ft (KB)

Total Depth: 4371.00 ft (KB) (TVD)

2250.00 ft (CF)

Hole Diameter: 7.88 inches Hole Condition: Fair

KB to GR/CF: 8.00 ft

Serial #: 8018 Inside

Press@RunDepth: 60.64 psig @ 4364.00 ft (KB)

Capacity: 8000.00 psig

Start Date: 2016.03.20 End Date: 2016.03.20

Last Calib.: 2016.03.20

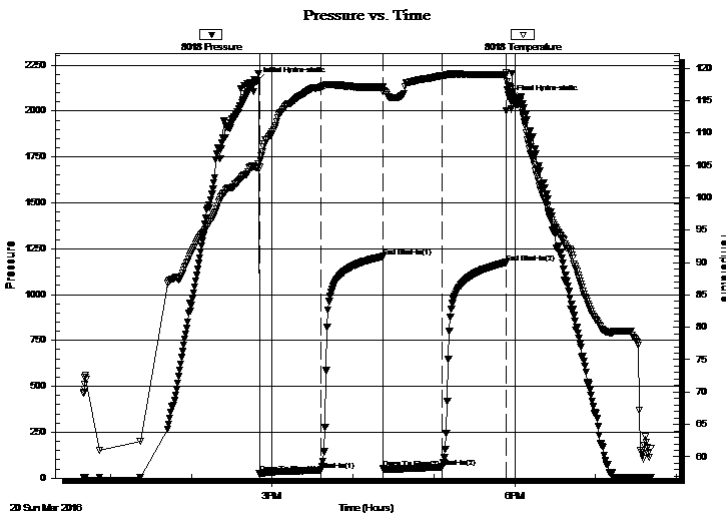
Start Time: 12:40:10 End Time: 19:40:49

Time On Btm: 2016.03.20 @ 14:48:20

Time Off Btm: 2016.03.20 @ 17:56:49

TEST COMMENT: 45-IFP-w k to a fr bl 1/4" to 4 1/4" bl
45-ISIP-no bl
45-FFP-w k bl thru-out 1/4" to 3" bl
45-FSIP-no bl

PRESSURE SUMMARY



Time (Min.)	Pressure (psig)	Temp (deg F)	Annotation
0	2158.51	104.62	Initial Hydro-static
3	23.96	104.69	Open To Flow (1)
48	44.23	117.08	Shut-In(1)
94	1207.20	117.08	End Shut-In(1)
94	53.29	116.42	Open To Flow (2)
138	60.64	118.86	Shut-In(2)
185	1174.30	119.00	End Shut-In(2)
189	2063.72	116.91	Final Hydro-static

Recovery

Length (ft)	Description	Volume (bbl)
0.00	60' GIP	0.00
40.00	O&GCWM 5% G15% O30% W50% M	0.29
60.00	CO	0.84

Gas Rates

	Choke (inches)	Pressure (psig)	Gas Rate (Mcf/d)



TRILOBITE TESTING, INC

DRILL STEM TEST REPORT

American Warrior , Inc

36-19s-22w Ness,KS

PO Box 399
Garden City, KS 67846

Williams #12

ATTN: Scott Corsair, Jason

Job Ticket: 64923

DST#: 1

Test Start: 2016.03.20 @ 12:40:10

GENERAL INFORMATION:

Formation: **Miss**

Deviated: No Whipstock: ft (KB)

Time Tool Opened: 14:50:35

Time Test Ended: 19:40:49

Interval: 4363.00 ft (KB) To 4371.00 ft (KB) (TVD)

Total Depth: 4371.00 ft (KB) (TVD)

Hole Diameter: 7.88 inches Hole Condition: Fair

Test Type: Conventional Bottom Hole (Initial)

Tester: Ray Schwager

Unit No: 70

Reference Elevations: 2258.00 ft (KB)

2250.00 ft (CF)

KB to GR/CF: 8.00 ft

Serial #: 8700 Outside

Press@RunDepth: psig @ 4364.00 ft (KB)

Start Date: 2016.03.20

End Date:

2016.03.20

Start Time: 12:40:14

End Time:

19:41:23

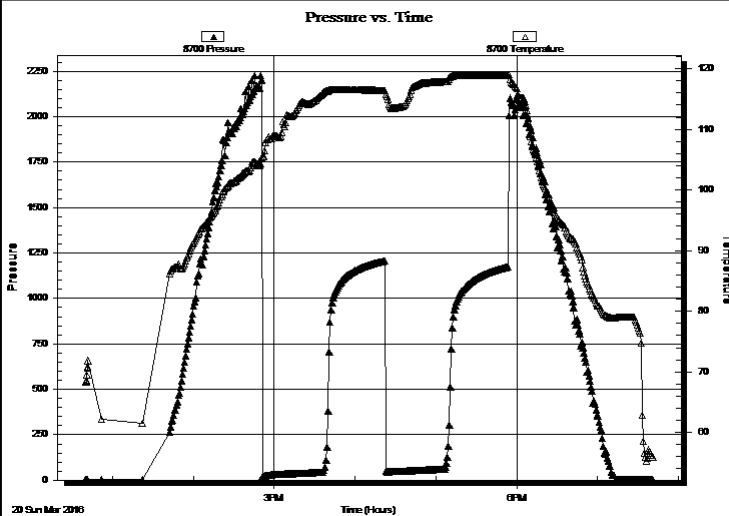
Capacity: 8000.00 psig

Last Calib.: 2016.03.20

Time On Btm:

Time Off Btm:

TEST COMMENT: 45-IFP-w k to a fr bl 1/4" to 4 1/4" bl
45-ISIP-no bl
45-FFP-w k bl thru-out 1/4" to 3" bl
45-FSIP-no bl



PRESSURE SUMMARY

Time (Min.)	Pressure (psig)	Temp (deg F)	Annotation

Recovery

Length (ft)	Description	Volume (bbl)
0.00	60' GIP	0.00
40.00	O&GCWM 5% G15% O30% W50% M	0.29
60.00	CO	0.84

Gas Rates

	Choke (inches)	Pressure (psig)	Gas Rate (Mcf/d)



**TRILOBITE
TESTING, INC**

DRILL STEM TEST REPORT

TOOL DIAGRAM

American Warrior, Inc

36-19s-22w Ness, KS

PO Box 399
Garden City, KS 67846

Williams #12

Job Ticket: 64923

DST#: 1

ATTN: Scott Corsair, Jason

Test Start: 2016.03.20 @ 12:40:10

Tool Information

Drill Pipe:	Length: 4312.00 ft	Diameter: 3.80 inches	Volume: 60.49 bbl	Tool Weight: 2200.00 lb
Heavy Wt. Pipe:	Length: 0.00 ft	Diameter: 0.00 inches	Volume: 0.00 bbl	Weight set on Packer: 25000.00 lb
Drill Collar:	Length: 30.00 ft	Diameter: 2.25 inches	Volume: 0.15 bbl	Weight to Pull Loose: 65000.00 lb
			<u>Total Volume: 60.64 bbl</u>	Tool Chased 0.00 ft
Drill Pipe Above KB:	8.00 ft			String Weight: Initial 54000.00 lb
Depth to Top Packer:	4363.00 ft			Final 55000.00 lb
Depth to Bottom Packer:	ft			
Interval between Packers:	8.00 ft			
Tool Length:	37.00 ft			
Number of Packers:	2	Diameter: 7.85 inches		

Tool Comments:

Tool Description

Tool Description	Length (ft)	Serial No.	Position	Depth (ft)	Accum. Lengths
Change Over Sub	1.00			4335.00	
Shut In Tool	5.00			4340.00	
Hydraulic tool	5.00			4345.00	
Jars	5.00			4350.00	
Safety Joint	3.00			4353.00	
Packer	5.00			4358.00	29.00 Bottom Of Top Packer
Packer	5.00			4363.00	
Stubb	1.00			4364.00	
Recorder	0.00	8018	Inside	4364.00	
Recorder	0.00	8700	Outside	4364.00	
Perforations	4.00			4368.00	
Bullnose	3.00			4371.00	8.00 Bottom Packers & Anchor

Total Tool Length: 37.00



**TRILOBITE
TESTING, INC**

DRILL STEM TEST REPORT

FLUID SUMMARY

American Warrior , Inc

36-19s-22w Ness,KS

PO Box 399
Garden City, KS 67846

Williams #12

Job Ticket: 64923

DST#: 1

ATTN: Scott Corsair, Jason

Test Start: 2016.03.20 @ 12:40:10

Mud and Cushion Information

Mud Type: Gel Chem
Mud Weight: 9.00 lb/gal
Viscosity: 51.00 sec/qt
Water Loss: 9.14 in³
Resistivity: ohm.m
Salinity: 7400.00 ppm
Filter Cake: 1.00 inches

Cushion Type:
Cushion Length: ft
Cushion Volume: bbl
Gas Cushion Type:
Gas Cushion Pressure: psig

Oil API: 39 deg API
Water Salinity: 24000 ppm

Recovery Information

Recovery Table

Length ft	Description	Volume bbl
0.00	60' GIP	0.000
40.00	O&GCWM 5%G15%O30%W50%M	0.288
60.00	CO	0.842

Total Length: 100.00 ft Total Volume: 1.130 bbl

Num Fluid Samples: 0

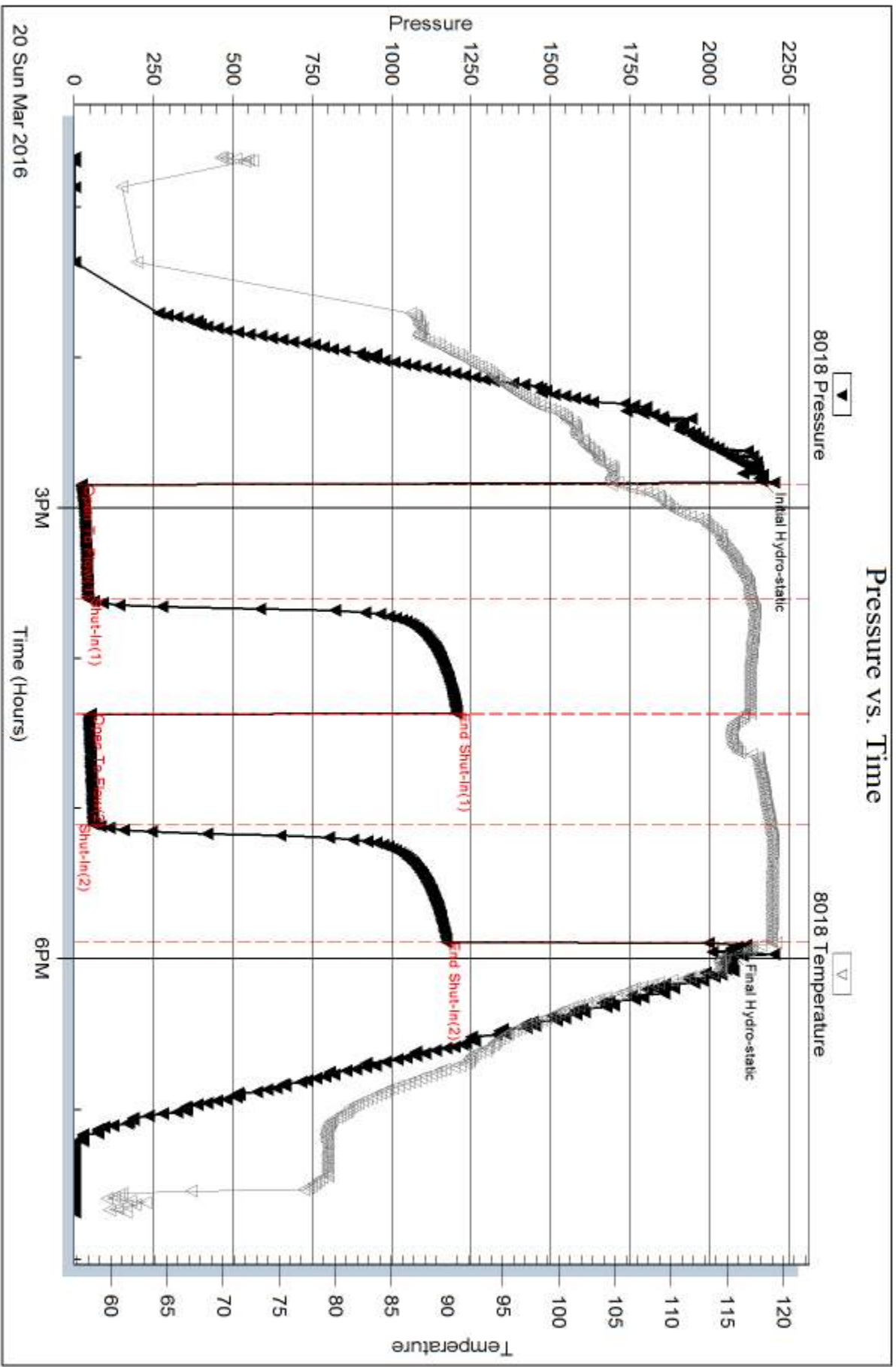
Num Gas Bombs: 0

Serial #:

Laboratory Name:

Laboratory Location:

Recovery Comments: RW .38@52F

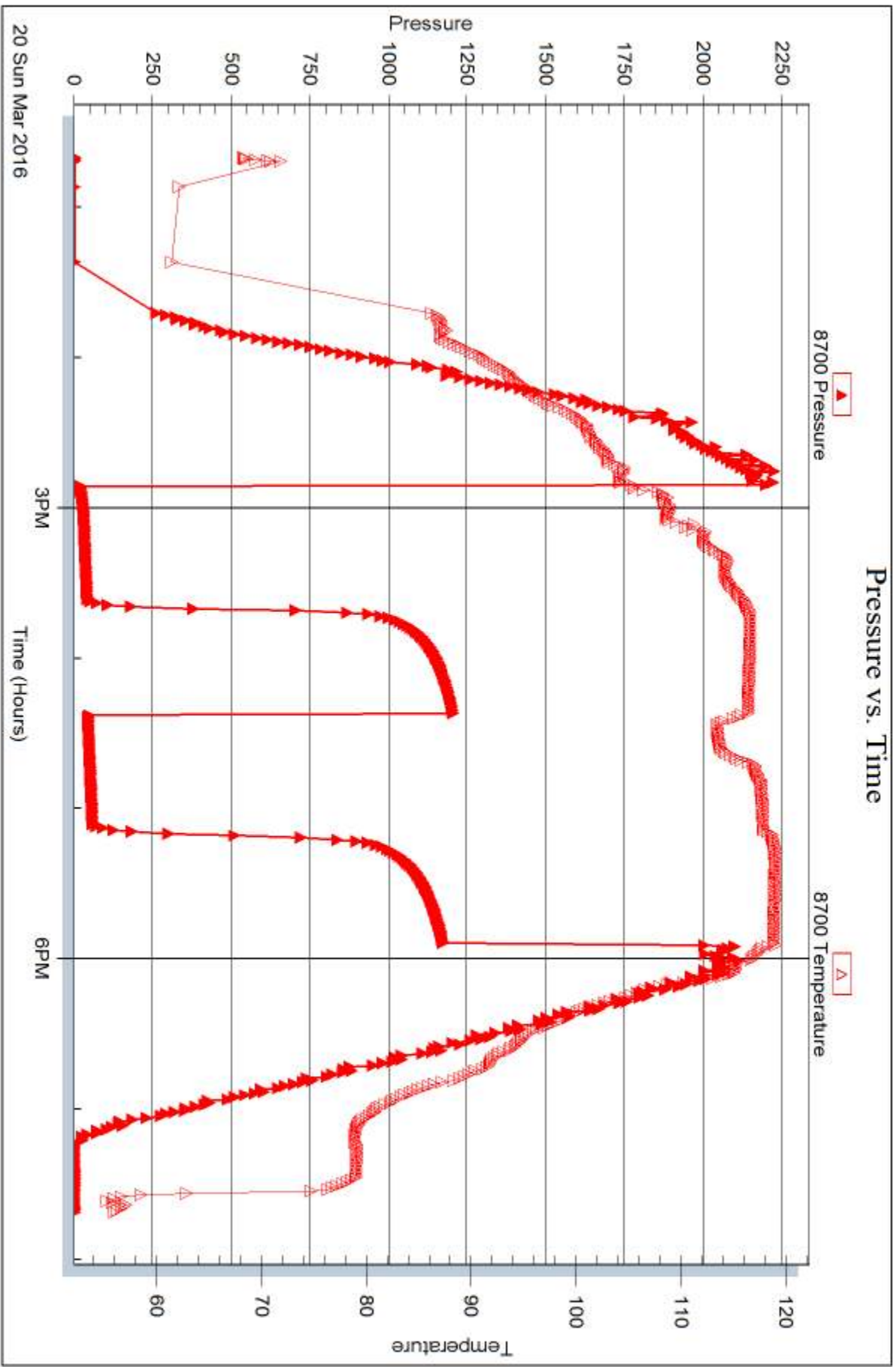


Serial #: 8700

Outside American Warrior, Inc

Williams #12

DST Test Number: 1



Trilobite Testing, Inc

Ref. No: 64923

Printed: 2016.03.21 @ 11:50:12



DRILL STEM TEST REPORT

Prepared For: **American Warrior , Inc**

PO Box 399
Garden City, KS 67846

ATTN: Scott Corsair, Jason

Williams #12

36-19s-22w Ness,KS

Start Date: 2016.03.21 @ 01:15:38

End Date: 2016.03.21 @ 08:09:02

Job Ticket #: 64924 DST #: 2

Trilobite Testing, Inc

PO Box 362 Hays, KS 67601

ph: 785-625-4778 fax: 785-625-5620

Printed: 2016.03.21 @ 11:49:45

American Warrior , Inc
36-19s-22w Ness,KS
Williams #12
DST # 2
Miss
2016.03.21



TRILOBITE TESTING, INC

DRILL STEM TEST REPORT

American Warrior, Inc

36-19s-22w Ness, KS

PO Box 399
Garden City, KS 67846

Williams #12

Job Ticket: 64924

DST#: 2

ATTN: Scott Corsair, Jason

Test Start: 2016.03.21 @ 01:15:38

GENERAL INFORMATION:

Formation: **Miss**

Deviated: No Whipstock: ft (KB)

Time Tool Opened: 03:11:03

Time Test Ended: 08:09:02

Test Type: Conventional Bottom Hole (Reset)

Tester: Ray Schwager

Unit No: 70

Interval: 4368.00 ft (KB) To 4376.00 ft (KB) (TVD)

Total Depth: 4376.00 ft (KB) (TVD)

Hole Diameter: 7.88 inches Hole Condition: Fair

Reference Elevations: 2258.00 ft (KB)

2250.00 ft (CF)

KB to GR/CF: 8.00 ft

Serial #: 8018 Inside

Press@RunDepth: 81.86 psig @ 4369.00 ft (KB)

Start Date: 2016.03.21

End Date:

2016.03.21

Start Time: 01:15:38

End Time:

08:09:02

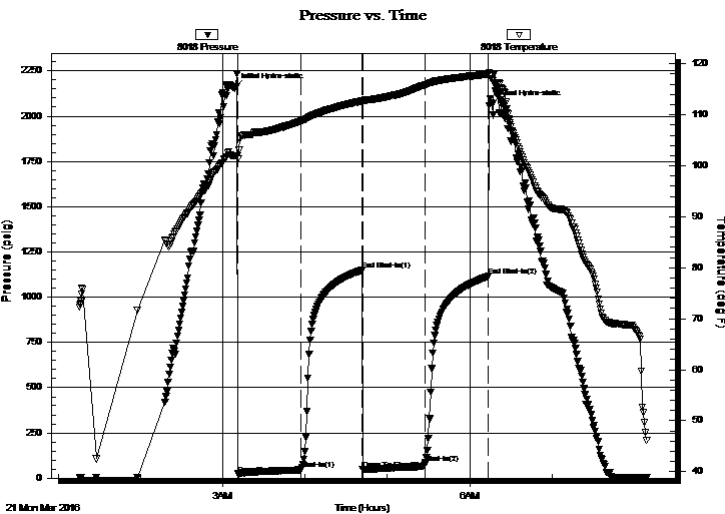
Capacity: 8000.00 psig

Last Calib.: 2016.03.21

Time On Btm: 2016.03.21 @ 03:08:33

Time Off Btm: 2016.03.21 @ 06:16:32

TEST COMMENT: 45-IFP-w k bl thru-out 1/4" to 3" bl
45-ISIP-no bl 1st 20 min, then had surface bl bk
45-FFP-w k bl thru-out 1/2" to 3" bl
45-FSIP-no bl



PRESSURE SUMMARY

Time (Min.)	Pressure (psig)	Temp (deg F)	Annotation
0	2155.44	101.97	Initial Hydro-static
3	22.91	101.34	Open To Flow (1)
49	46.70	108.75	Shut-In(1)
93	1148.37	112.67	End Shut-In(1)
94	50.62	112.42	Open To Flow (2)
139	81.86	115.82	Shut-In(2)
185	1114.91	117.93	End Shut-In(2)
188	2066.39	116.82	Final Hydro-static

Recovery

Length (ft)	Description	Volume (bbl)
0.00	70' GIP	0.00
60.00	SO&GCWM 10%G5%O35%W50%M	0.57
50.00	CO	0.70

Gas Rates

	Choke (inches)	Pressure (psig)	Gas Rate (Mcf/d)

* Recovery from multiple tests



TRILOBITE
TESTING, INC

DRILL STEM TEST REPORT

American Warrior , Inc

36-19s-22w Ness,KS

PO Box 399
Garden City, KS 67846

Williams #12

Job Ticket: 64924

DST#: 2

ATTN: Scott Corsair, Jason

Test Start: 2016.03.21 @ 01:15:38

GENERAL INFORMATION:

Formation: **Miss**
 Deviated: No Whipstock: ft (KB)
 Time Tool Opened: 03:11:03
 Time Test Ended: 08:09:02
 Interval: **4368.00 ft (KB) To 4376.00 ft (KB) (TVD)**
 Total Depth: 4376.00 ft (KB) (TVD)
 Hole Diameter: 7.88 inches Hole Condition: Fair
 Test Type: Conventional Bottom Hole (Reset)
 Tester: Ray Schwager
 Unit No: 70
 Reference Elevations: 2258.00 ft (KB)
 2250.00 ft (CF)
 KB to GR/CF: 8.00 ft

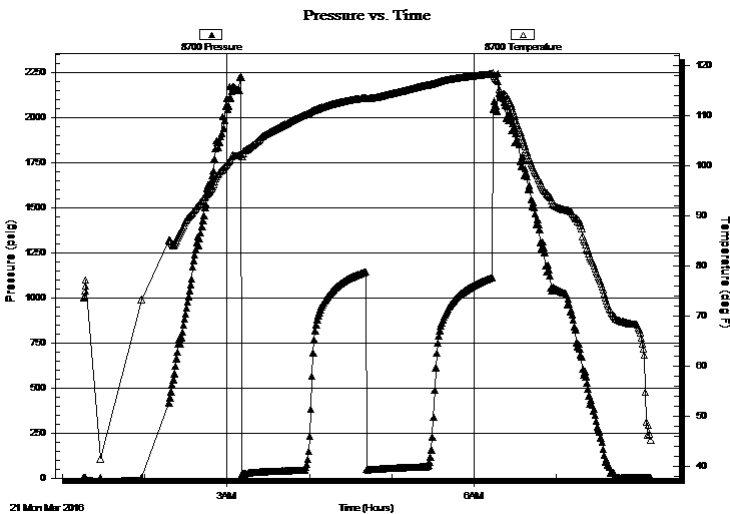
Serial #: 8700

Outside

Press@RunDepth: psig @ 4369.00 ft (KB) Capacity: 8000.00 psig
 Start Date: 2016.03.21 End Date: 2016.03.21 Last Calib.: 2016.03.21
 Start Time: 01:15:28 End Time: 08:08:52 Time On Btm:
 Time Off Btm:

TEST COMMENT: 45-IFP-w k bl thru-out 1/4" to 3" bl
 45-ISIP-no bl 1st 20 min , then had surface bl bk
 45-FFP-w k bl thru-out 1/2" to 3" bl
 45-FSIP-no bl

PRESSURE SUMMARY



Time (Min.)	Pressure (psig)	Temp (deg F)	Annotation

Recovery

Length (ft)	Description	Volume (bbl)
0.00	70' GIP	0.00
60.00	SO&GCWM 10%G5%O35%W50%M	0.57
50.00	CO	0.70

* Recovery from multiple tests

Gas Rates

Choke (inches)	Pressure (psig)	Gas Rate (Mcf/d)



**TRILOBITE
TESTING, INC**

DRILL STEM TEST REPORT

TOOL DIAGRAM

American Warrior, Inc

36-19s-22w Ness, KS

PO Box 399
Garden City, KS 67846

Williams #12

Job Ticket: 64924

DST#: 2

ATTN: Scott Corsair, Jason

Test Start: 2016.03.21 @ 01:15:38

Tool Information

Drill Pipe:	Length: 4313.00 ft	Diameter: 3.80 inches	Volume: 60.50 bbl	Tool Weight: 2200.00 lb
Heavy Wt. Pipe:	Length: 0.00 ft	Diameter: 0.00 inches	Volume: 0.00 bbl	Weight set on Packer: 25000.00 lb
Drill Collar:	Length: 30.00 ft	Diameter: 2.25 inches	Volume: 0.15 bbl	Weight to Pull Loose: 65000.00 lb
			<u>Total Volume: 60.65 bbl</u>	Tool Chased 0.00 ft
Drill Pipe Above KB:	4.00 ft			String Weight: Initial 54000.00 lb
Depth to Top Packer:	4368.00 ft			Final 55000.00 lb
Depth to Bottom Packer:	ft			
Interval between Packers:	8.00 ft			
Tool Length:	37.00 ft			
Number of Packers:	2	Diameter: 7.85 inches		

Tool Comments:

Tool Description

Tool Description	Length (ft)	Serial No.	Position	Depth (ft)	Accum. Lengths
Change Over Sub	1.00			4340.00	
Shut In Tool	5.00			4345.00	
Hydraulic tool	5.00			4350.00	
Jars	5.00			4355.00	
Safety Joint	3.00			4358.00	
Packer	5.00			4363.00	29.00 Bottom Of Top Packer
Packer	5.00			4368.00	
Stubb	1.00			4369.00	
Recorder	0.00	8018	Inside	4369.00	
Recorder	0.00	8700	Outside	4369.00	
Perforations	4.00			4373.00	
Bullnose	3.00			4376.00	8.00 Bottom Packers & Anchor

Total Tool Length: 37.00



**TRILOBITE
TESTING, INC**

DRILL STEM TEST REPORT

FLUID SUMMARY

American Warrior, Inc

36-19s-22w Ness,KS

PO Box 399
Garden City, KS 67846

Williams #12

Job Ticket: 64924

DST#: 2

ATTN: Scott Corsair, Jason

Test Start: 2016.03.21 @ 01:15:38

Mud and Cushion Information

Mud Type: Gel Chem
Mud Weight: 9.00 lb/gal
Viscosity: 51.00 sec/qt
Water Loss: 9.13 in³
Resistivity: ohm.m
Salinity: 7400.00 ppm
Filter Cake: 1.00 inches

Cushion Type:
Cushion Length: ft
Cushion Volume: bbl
Gas Cushion Type:
Gas Cushion Pressure: psig

Oil API: 39 deg API
Water Salinity: 25000 ppm

Recovery Information

Recovery Table

Length ft	Description	Volume bbl
0.00	70' GIP	0.000
60.00	SO&GCWM 10%G5%O35%W50%M	0.568
50.00	CO	0.701

Total Length: 110.00 ft Total Volume: 1.269 bbl

Num Fluid Samples: 0

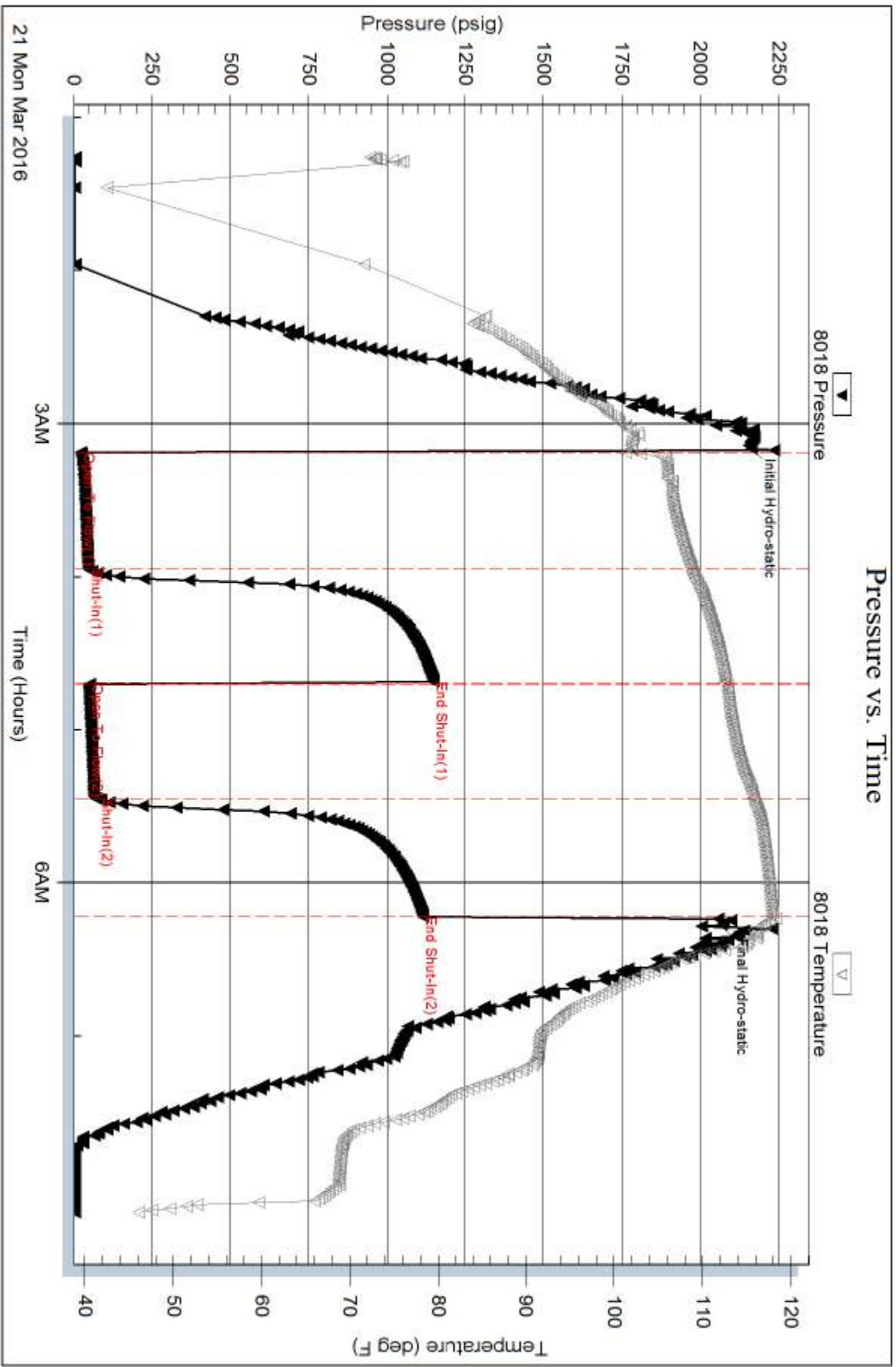
Num Gas Bombs: 0

Serial #:

Laboratory Name:

Laboratory Location:

Recovery Comments: RW .37@50F

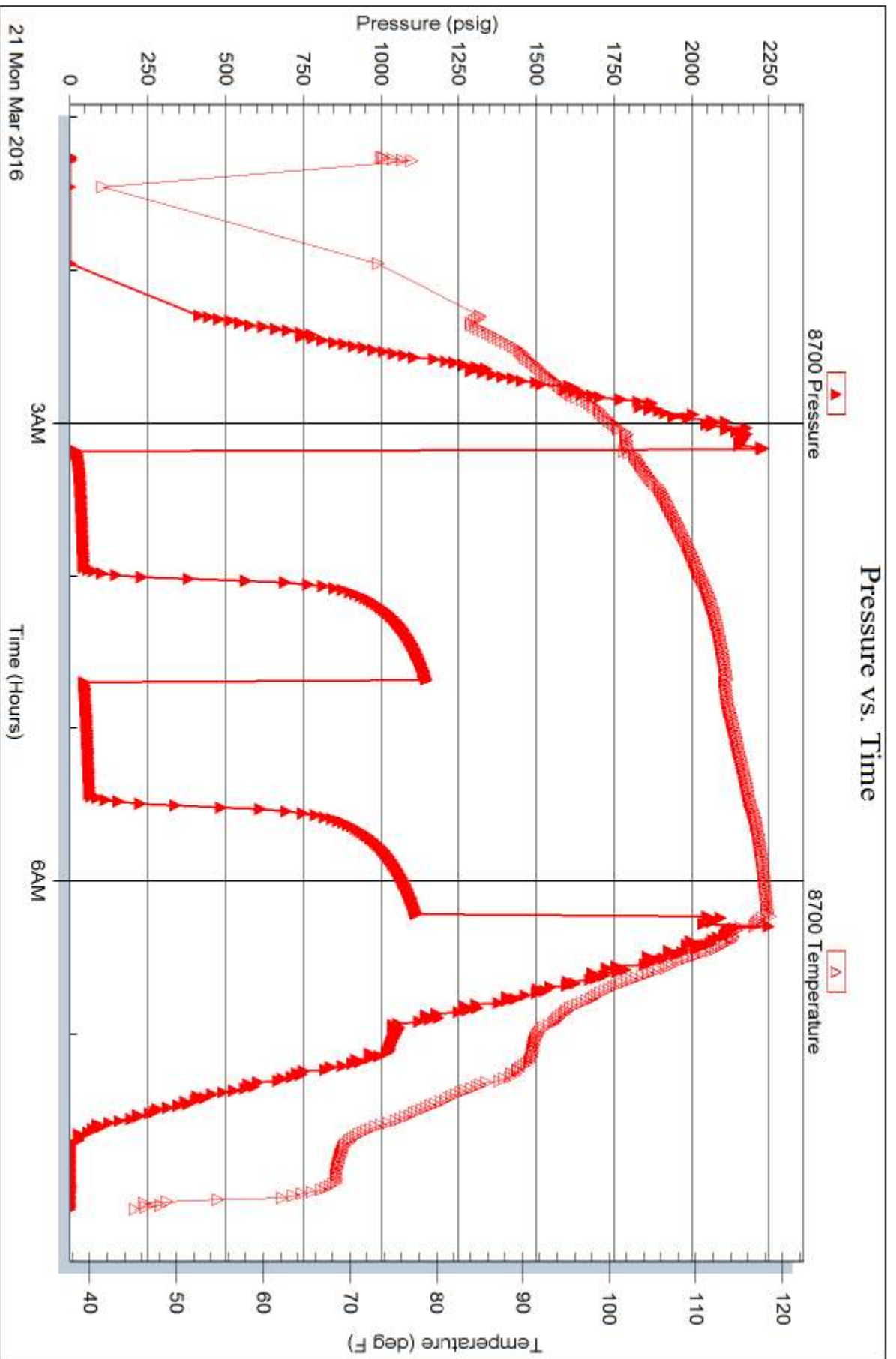


Serial #: 8700

Outside American Warrior, Inc

Williams #12

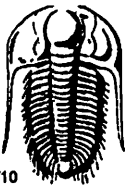
DST Test Number: 2



Tribble Testing, Inc

Ref. No: 64924

Printed: 2016.03.21 @ 11:49:47



TRILOBITE TESTING INC.

1515 Commerce Parkway • Hays, Kansas 67601

Test Ticket

NO. 64923

Well Name & No. Williams #12 Test No. 1 Date 3-20-16
 Company American Warrior Inc Elevation 2258 KB 2250 GL
 Address 3118 Cummings Rd. PO Box 399 Garden City, Ks 67846
 Co. Rep / Geo. Jason Alm Rig Discovery 193
 Location: Sec. 36 Twp. 19^s Rge. 22^w Co. Ness State Ks

Interval Tested 4363-4371 Zone Tested MISS
 Anchor Length 8 Drill Pipe Run 4312 Mud Wt. 9.2
 Top Packer Depth 4358 Drill Collars Run 30 Vis 51
 Bottom Packer Depth 4363 Wt. Pipe Run - WL 9.2
 Total Depth 4371 Chlorides 7400 ppm System LCM TR.

Blow Description IFP - WEAK TO A FAIR BLOW 1/4" TO 4 1/4" BLOW
ISIP - NO BLOW
FFP - WEAK BLOW THRU-OUT 1/4" TO 3" BLOW
FSIP - NO BLOW

Rec	Feet of	%gas	%oil	%water	%mud
<u>60</u>	<u>6TP</u>				
<u>80</u>	<u>CO</u>				
<u>40</u>	<u>0+6CWM</u>	<u>5</u>	<u>15</u>	<u>30</u>	<u>50</u>
Rec	Feet of	%gas	%oil	%water	%mud
Rec	Feet of	%gas	%oil	%water	%mud

Rec Total 100 BHT 119 Gravity 39 API RW .38 @ 52 °F Chlorides 24000 ppm

- (A) Initial Hydrostatic 2158
- (B) First Initial Flow 23
- (C) First Final Flow 44
- (D) Initial Shut-In 1207
- (E) Second Initial Flow 53
- (F) Second Final Flow 60
- (G) Final Shut-In 1174
- (H) Final Hydrostatic 2063

- Test 1150
- Jars 250
- Safety Joint 75
- Circ Sub
- Hourly Standby
- Mileage 116 RT 87
- Sampler
- Straddle
- Shale Packer
- Extra Packer
- Extra Recorder
- Day Standby
- Accessibility

T-On Location 1145
 T-Started 1240
 T-Open 1450
 T-Pulled 1750
 T-Out 1940

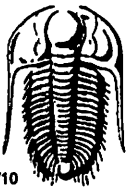
Comments _____
 Ruined Shale Packer
 Ruined Packer
 Extra Copies
 Sub Total 0
 Total 1562
 MP/DST Disc't _____

Initial Open 45
 Initial Shut-In 45
 Final Flow 45
 Final Shut-In 45

Approved By _____

Our Representative Ray Schwager *Thank you*

Trilobite Testing Inc. shall not be liable for damaged of any kind of the property or personnel of the one for whom a test is made, or for any loss suffered or sustained, directly or indirectly, through the use of its equipment, or its statements or opinion concerning the results of any test, tools lost or damaged in the hole shall be paid for at cost by the party for whom the test is made.



TRILOBITE TESTING INC.

1515 Commerce Parkway • Hays, Kansas 67601

Test Ticket

NO. 64924

Well Name & No. Williams #12 Test No. 2 Date 3-28-16
 Company AMERICAN WARRIOR, INC Elevation 2258 KB 2250 GL
 Address 3118 Cummings Rd, PO Box 399 Garden City, Ks 67846
 Co. Rep / Geo. Jason Alm Rig DISCOVERY RIG 3
 Location: Sec. 36 Twp. 19^s Rge. 22^w Co. Ness State Ks

Interval Tested 4368-4376 Zone Tested MISS
 Anchor Length 8 Drill Pipe Run 4313 Mud Wt. 9.2
 Top Packer Depth 4363 Drill Collars Run 30 Vis SI
 Bottom Packer Depth 4368 Wt. Pipe Run - WL 9.2
 Total Depth 4376 Chlorides 7400 ppm System LCM TR

Blow Description IFP - WEAK BLOW THRU-OUT 1/4" TO 3" BLOW
ISIP - NO BLOW, 1st 20 MIN, THEN HAD SURFACE BLOW BACK
FFP - WEAK BLOW THRU-OUT 1/2" TO 3" BLOW
FSTIP - SURFACE BLOW BACK

Rec	Feet of	%gas	%oil	%water	%mud
<u>70</u>	<u>Feet of GIP</u>				
<u>50</u>	<u>Feet of CO</u>				
<u>60</u>	<u>Feet of 50" 6CWM</u>	<u>10</u>	<u>5</u>	<u>35</u>	<u>50</u>
Rec	Feet of	%gas	%oil	%water	%mud
Rec	Feet of	%gas	%oil	%water	%mud

Rec Total 110 BHT 118 Gravity 39 API RW .37 @ 50 °F Chlorides 25000 ppm

- (A) Initial Hydrostatic 2155
- (B) First Initial Flow 22
- (C) First Final Flow 46
- (D) Initial Shut-In 1148
- (E) Second Initial Flow 50
- (F) Second Final Flow 81
- (G) Final Shut-In 1114
- (H) Final Hydrostatic 2066

- Test 1150
- Jars 250
- Safety Joint 75
- Circ Sub
- Hourly Standby
- Mileage 30 RT 22.50
- Sampler
- Straddle
- Shale Packer
- Extra Packer
- Extra Recorder
- Day Standby
- Accessibility
- Sub Total 1497.50

T-On Location 0000
 T-Started 0115
 T-Open 0310
 T-Pulled 0610
 T-Out 0809

Comments STAYED AT RIG BETWEEN TESTS
 Ruined Shale Packer
 Ruined Packer
 Extra Copies
 Sub Total 0
 Total 1497.50
 MP/DST Disc't

Initial Open 45
 Initial Shut-In 45
 Final Flow 45
 Final Shut-In 45

Approved By _____

Our Representative RAY SCHWAGH Thank you

TriLOBITE Testing Inc. shall not be liable for damaged of any kind of the property or personnel of the one for whom a test is made, or for any loss suffered or sustained, directly or indirectly, through the use of its equipment, or its statements or opinion concerning the results of any test, tools lost or damaged in the hole shall be paid for at cost by the party for whom the test is made.