



DRILL STEM TEST REPORT

Prepared For: **Questa Energy Corporation**

PO Box 50968
Amarillo TX 79159+0968

ATTN: Justin Carter

Zerr #1-23

23-12S-31W Gove,KS

Start Date: 2016.08.24 @ 04:19:00

End Date: 2016.08.24 @ 11:08:30

Job Ticket #: 65113 DST #: 1

Trilobite Testing, Inc
PO Box 362 Hays, KS 67601
ph: 785-625-4778 fax: 785-625-5620

Printed: 2016.08.26 @ 11:49:35



TRILOBITE TESTING, INC

DRILL STEM TEST REPORT

Questa Energy Corporation

23-12S-31W Gove,KS

PO Box 50968
Amarillo TX 79159+0968

Zerr #1-23

Job Ticket: 65113

DST#: 1

ATTN: Justin Carter

Test Start: 2016.08.24 @ 04:19:00

GENERAL INFORMATION:

Formation: **Ft Scott**

Deviated: No Whipstock: ft (KB)

Time Tool Opened: 06:17:00

Time Test Ended: 11:08:30

Test Type: Conventional Bottom Hole (Initial)

Tester: Ken Swinney

Unit No: 72

Interval: 4356.00 ft (KB) To 4390.00 ft (KB) (TVD)

Reference Elevations: 2837.00 ft (KB)

Total Depth: 4390.00 ft (KB) (TVD)

2829.00 ft (CF)

Hole Diameter: 7.80 inches Hole Condition: Fair

KB to GR/CF: 8.00 ft

Serial #: 6999 Inside

Press@RunDepth: 62.78 psig @ 4386.00 ft (KB)

Capacity: 8000.00 psig

Start Date: 2016.08.24

End Date:

2016.08.24

Last Calib.:

2016.08.24

Start Time: 04:19:05

End Time:

11:08:29

Time On Btm:

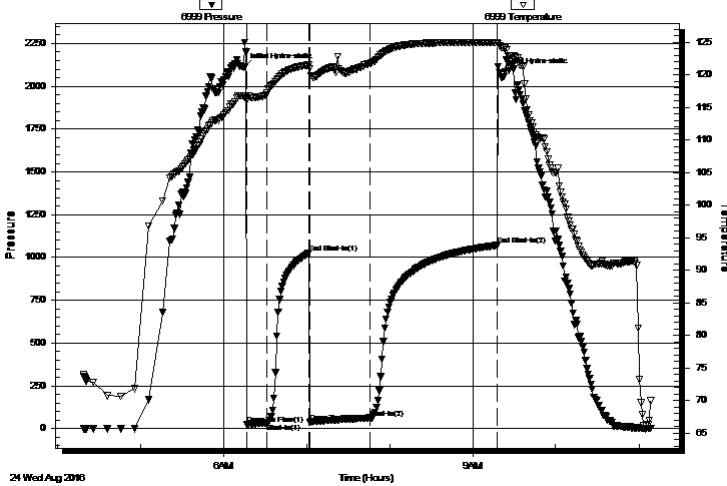
2016.08.24 @ 06:15:00

Time Off Btm:

2016.08.24 @ 09:19:30

TEST COMMENT: IFP 15 Minutes Blow built to 4 1/2"
ISI 30 Minutes No blow back
FFP 45 Minutes Blow built to 2" and held throughout
FSI 90 Minutes No blow back

Pressure vs. Time



PRESSURE SUMMARY

Time (Min.)	Pressure (psig)	Temp (deg F)	Annotation
0	2108.70	116.74	Initial Hydro-static
2	24.17	116.03	Open To Flow (1)
16	33.02	117.03	Shut-In(1)
47	1024.50	121.52	End Shut-In(1)
48	36.80	120.95	Open To Flow (2)
91	62.78	121.80	Shut-In(2)
183	1070.79	125.01	End Shut-In(2)
185	2079.28	124.45	Final Hydro-static

Recovery

Length (ft)	Description	Volume (bbl)
62.00	MW Mud 40% Water 60%	0.54
30.00	OCM Oil 5% Mud 95%	0.26
30.00	Clean Oil 100%	0.26
0.00	186' GIP	0.00

Gas Rates

	Choke (inches)	Pressure (psig)	Gas Rate (Mcf/d)



**TRILOBITE
TESTING, INC**

DRILL STEM TEST REPORT

TOOL DIAGRAM

Questa Energy Corporation

23-12S-31W Gove,KS

PO Box 50968
Amarillo TX 79159+0968

Zerr #1-23

Job Ticket: 65113

DST#: 1

ATTN: Justin Carter

Test Start: 2016.08.24 @ 04:19:00

Tool Information

Drill Pipe:	Length: 4031.00 ft	Diameter: 3.80 inches	Volume: 56.54 bbl	Tool Weight:	2000.00 lb
Heavy Wt. Pipe:	Length: 317.00 ft	Diameter: 3.00 inches	Volume: 2.77 bbl	Weight set on Packer:	20000.00 lb
Drill Collar:	Length: 0.00 ft	Diameter: 0.00 inches	Volume: 0.00 bbl	Weight to Pull Loose:	74000.00 lb
			<u>Total Volume: 59.31 bbl</u>	Tool Chased	0.00 ft
Drill Pipe Above KB:	19.00 ft			String Weight: Initial	60000.00 lb
Depth to Top Packer:	4356.00 ft			Final	60000.00 lb
Depth to Bottom Packer:	ft				
Interval between Packers:	34.00 ft				
Tool Length:	61.00 ft				
Number of Packers:	2	Diameter: 6.75 inches			
Tool Comments:					

Tool Description

Tool Description	Length (ft)	Serial No.	Position	Depth (ft)	Accum. Lengths
Shut-In Tool	5.00			4334.00	
Hydraulic tool	5.00			4339.00	
Jars	5.00			4344.00	
Safety Joint	2.00			4346.00	
Top Packer	5.00			4351.00	
Packer	5.00			4356.00	27.00 Bottom Of Top Packer
Anchor	29.00			4385.00	
Recorder	1.00	6999	Inside	4386.00	
Recorder	1.00	8960	Outside	4387.00	
Bullnose	3.00			4390.00	34.00 Anchor Tool
Total Tool Length:	61.00				



**TRILOBITE
TESTING, INC**

DRILL STEM TEST REPORT

FLUID SUMMARY

Questa Energy Corporation

23-12S-31W Gove,KS

PO Box 50968
Amarillo TX 79159+0968

Zerr #1-23

Job Ticket: 65113

DST#: 1

ATTN: Justin Carter

Test Start: 2016.08.24 @ 04:19:00

Mud and Cushion Information

Mud Type: Gel Chem

Cushion Type:

Oil API:

34 deg API

Mud Weight: 9.00 lb/gal

Cushion Length:

ft

Water Salinity:

26000 ppm

Viscosity: 48.00 sec/qt

Cushion Volume:

bbbl

Water Loss: 6.39 in³

Gas Cushion Type:

Resistivity: ohm.m

Gas Cushion Pressure:

psig

Salinity: 2000.00 ppm

Filter Cake: 1.00 inches

Recovery Information

Recovery Table

Length ft	Description	Volume bbbl
62.00	MW Mud 40% Water 60%	0.542
30.00	OCM Oil 5% Mud 95%	0.262
30.00	Clean Oil 100%	0.262
0.00	186' GIP	0.000

Total Length: 122.00 ft Total Volume: 1.066 bbl

Num Fluid Samples: 0

Num Gas Bombs: 0

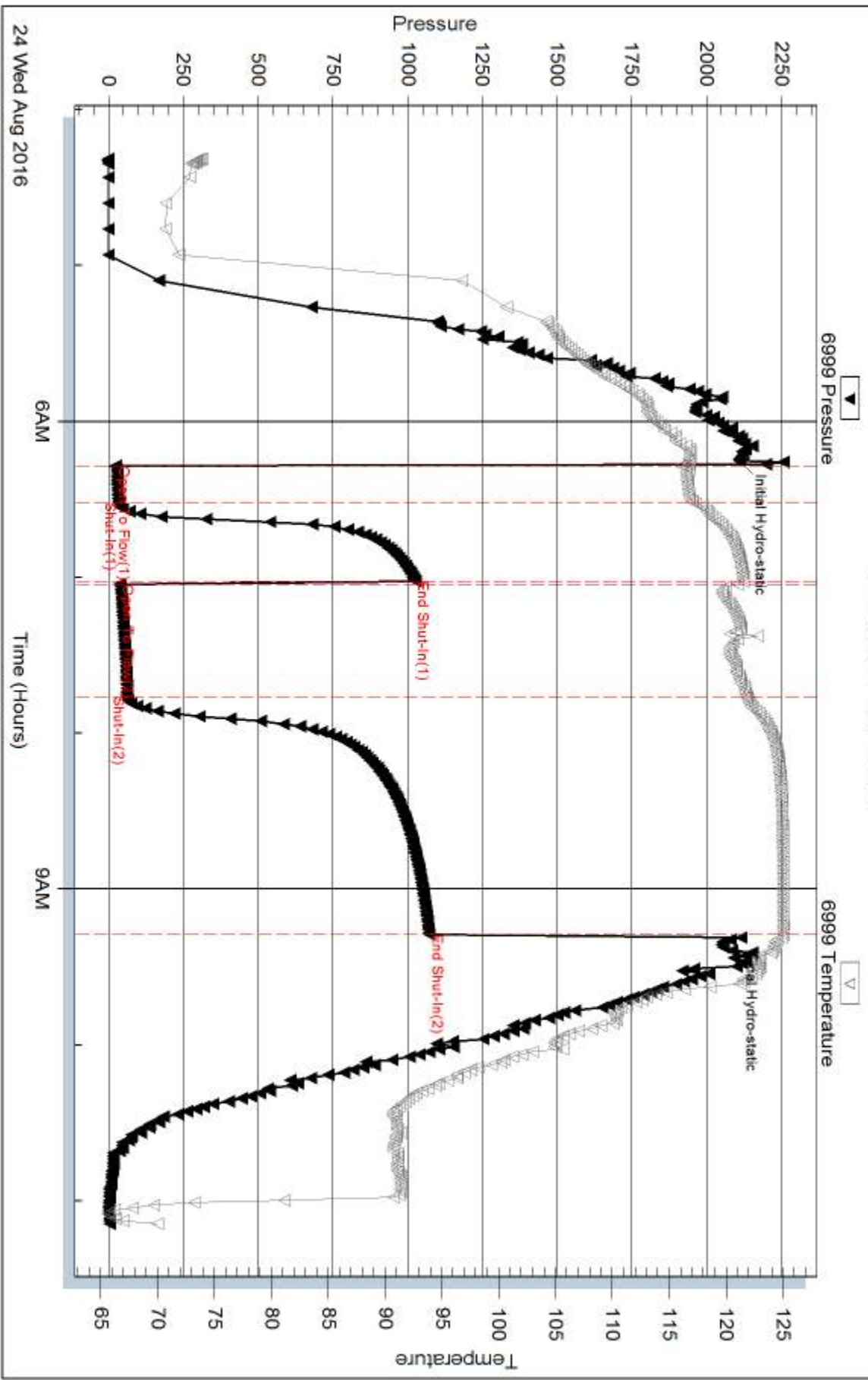
Serial #:

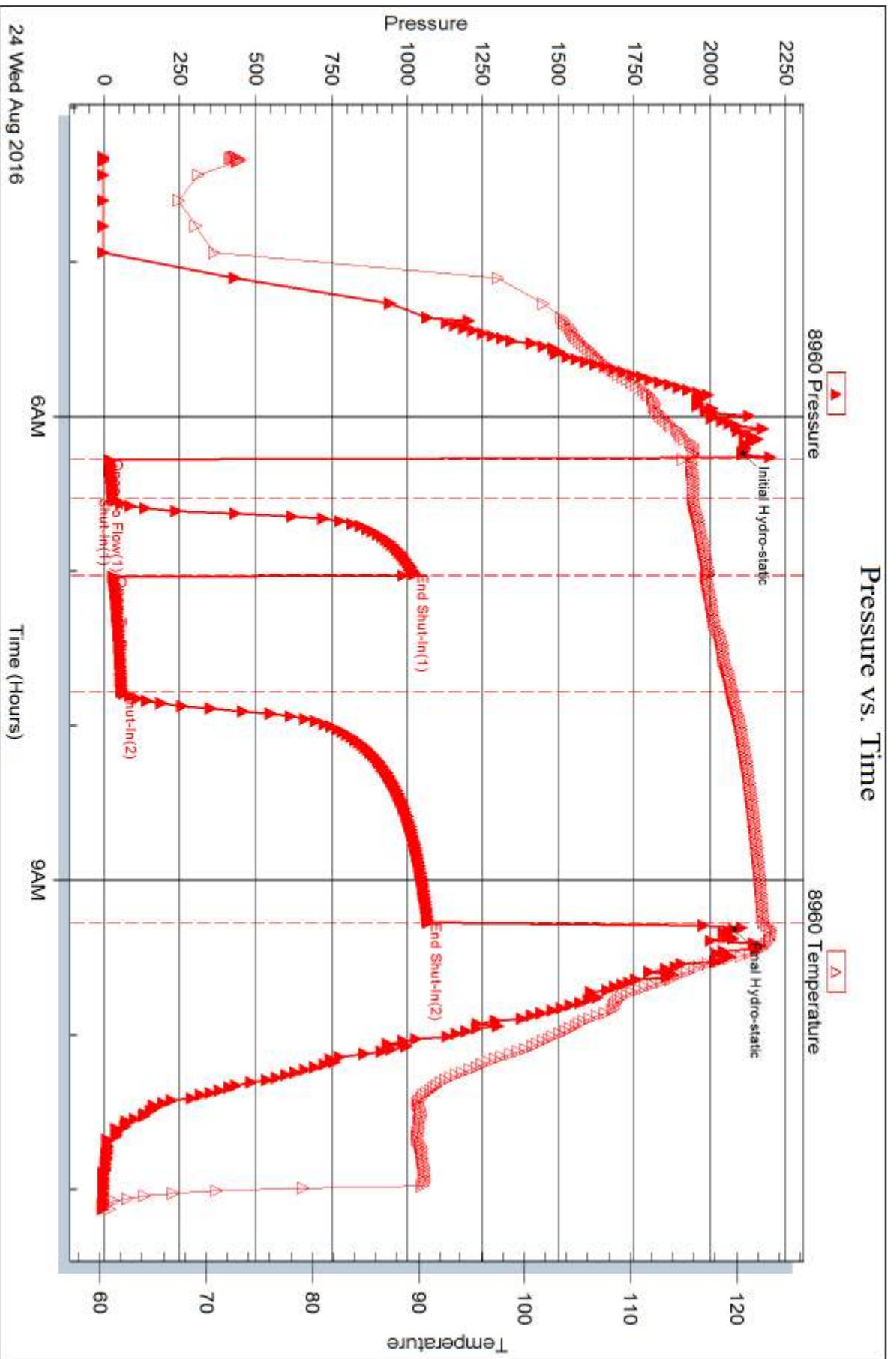
Laboratory Name:

Laboratory Location:

Recovery Comments: Recovery Resistivity .24 ohms @ 73 deg.

Pressure vs. Time







DRILL STEM TEST REPORT

Prepared For: **Questa Energy Corporation**

PO Box 50968
Amarillo TX 79159+0968

ATTN: Justin Carter

Zerr #1-23

23-12S-31W Gove,KS

Start Date: 2016.08.25 @ 00:47:00

End Date: 2016.08.25 @ 05:56:30

Job Ticket #: 65114 DST #: 2

Trilobite Testing, Inc

PO Box 362 Hays, KS 67601

ph: 785-625-4778 fax: 785-625-5620

Printed: 2016.08.26 @ 11:44:51



**TRILOBITE
TESTING, INC**

DRILL STEM TEST REPORT

Questa Energy Corporation

23-12S-31W Gove,KS

PO Box 50968
Amarillo TX 79159+0968

Zerr #1-23

Job Ticket: 65114

DST#: 2

ATTN: Justin Carter

Test Start: 2016.08.25 @ 00:47:00

GENERAL INFORMATION:

Formation: **Johnson**

Deviated: No Whipstock: ft (KB)

Time Tool Opened: 02:32:30

Time Test Ended: 05:56:30

Test Type: Conventional Bottom Hole (Initial)

Tester: Ken Swinney

Unit No: 72

Interval: 4402.00 ft (KB) To 4468.00 ft (KB) (TVD)

Reference Elevations: 2837.00 ft (KB)

Total Depth: 4468.00 ft (KB) (TVD)

2829.00 ft (CF)

Hole Diameter: 7.80 inches Hole Condition: Fair

KB to GR/CF: 8.00 ft

Serial #: 6999 Inside

Press@RunDepth: 42.96 psig @ 4464.27 ft (KB)

Capacity: 8000.00 psig

Start Date: 2016.08.25 End Date: 2016.08.25

Last Calib.: 2016.08.25

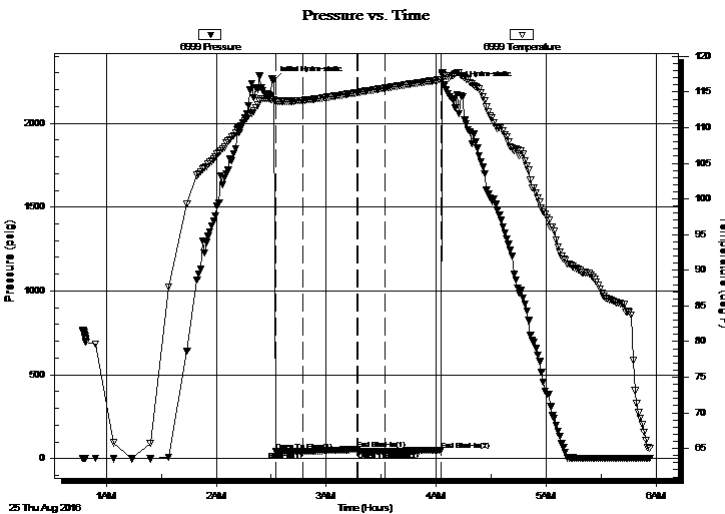
Start Time: 00:47:05 End Time: 05:56:29

Time On Btm: 2016.08.25 @ 02:31:30

Time Off Btm: 2016.08.25 @ 04:04:30

TEST COMMENT: IFP 15 Minutes Blow built to 1/8"
ISI 30 Minutes No blow back
FFP 15 Minutes Dead no blow
FSI 30 Minutes No blow back

PRESSURE SUMMARY



Time (Min.)	Pressure (psig)	Temp (deg F)	Annotation
0	2253.71	113.88	Initial Hydro-static
1	43.16	113.57	Open To Flow (1)
16	42.58	113.82	Shut-In(1)
46	54.56	114.93	End Shut-In(1)
46	42.60	114.95	Open To Flow (2)
61	42.96	115.56	Shut-In(2)
91	50.78	116.74	End Shut-In(2)
93	2227.35	117.26	Final Hydro-static

Recovery

Length (ft)	Description	Volume (bbl)
3.00	Mud 100%	0.03

Gas Rates

	Choke (inches)	Pressure (psig)	Gas Rate (Mcf/d)



TRILOBITE TESTING, INC

DRILL STEM TEST REPORT

Questa Energy Corporation
 PO Box 50968
 Amarillo TX 79159+0968
 ATTN: Justin Carter

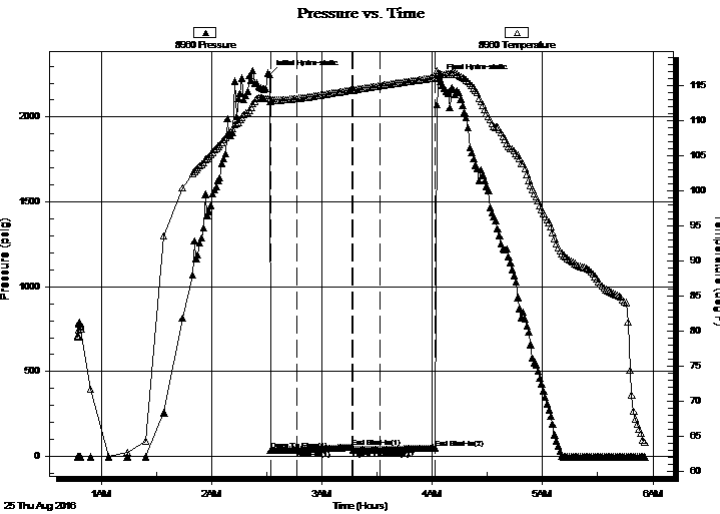
23-12S-31W Gove,KS
Zerr #1-23
 Job Ticket: 65114 **DST#: 2**
 Test Start: 2016.08.25 @ 00:47:00

GENERAL INFORMATION:

Formation: **Johnson**
 Deviated: No Whipstock: ft (KB)
 Time Tool Opened: 02:32:30
 Time Test Ended: 05:56:30
 Interval: **4402.00 ft (KB) To 4468.00 ft (KB) (TVD)**
 Total Depth: 4468.00 ft (KB) (TVD)
 Hole Diameter: 7.80 inches Hole Condition: Fair
 Test Type: Conventional Bottom Hole (Initial)
 Tester: Ken Swinney
 Unit No: 72
 Reference Elevations: 2837.00 ft (KB)
 2829.00 ft (CF)
 KB to GR/CF: 8.00 ft

Serial #: 8960 Outside
 Press@RunDepth: 50.73 psig @ 4465.27 ft (KB)
 Start Date: 2016.08.25 End Date: 2016.08.25
 Start Time: 00:47:05 End Time: 05:55:59
 Capacity: 8000.00 psig
 Last Calib.: 2016.08.25
 Time On Btm: 2016.08.25 @ 02:31:30
 Time Off Btm: 2016.08.25 @ 04:04:00

TEST COMMENT: IFP 15 Minutes Blow built to 1/8"
 ISI 30 Minutes No blow back
 FFP 15 Minutes Dead no blow
 FSI 30 Minutes No blow back



PRESSURE SUMMARY

Time (Min.)	Pressure (psig)	Temp (deg F)	Annotation
0	2250.90	113.24	Initial Hydro-static
1	37.19	112.74	Open To Flow (1)
15	38.23	113.20	Shut-In(1)
45	54.31	114.41	End Shut-In(1)
46	38.41	114.42	Open To Flow (2)
60	39.30	115.02	Shut-In(2)
90	50.73	116.17	End Shut-In(2)
93	2226.75	116.69	Final Hydro-static

Recovery

Length (ft)	Description	Volume (bbl)
3.00	Mud 100%	0.03

Gas Rates

Choke (inches)	Pressure (psig)	Gas Rate (Mcf/d)



**TRILOBITE
TESTING, INC**

DRILL STEM TEST REPORT

TOOL DIAGRAM

Questa Energy Corporation

23-12S-31W Gove,KS

PO Box 50968
Amarillo TX 79159+0968

Zerr #1-23

Job Ticket: 65114

DST#: 2

ATTN: Justin Carter

Test Start: 2016.08.25 @ 00:47:00

Tool Information

Drill Pipe:	Length: 4061.00 ft	Diameter: 3.80 inches	Volume: 56.97 bbl	Tool Weight:	2000.00 lb
Heavy Wt. Pipe:	Length: 317.00 ft	Diameter: 3.00 inches	Volume: 2.77 bbl	Weight set on Packer:	20000.00 lb
Drill Collar:	Length: 0.00 ft	Diameter: 0.00 inches	Volume: 0.00 bbl	Weight to Pull Loose:	74000.00 lb
			<u>Total Volume: 59.74 bbl</u>	Tool Chased	0.00 ft
Drill Pipe Above KB:	4.00 ft			String Weight: Initial	62000.00 lb
Depth to Top Packer:	4402.00 ft			Final	62000.00 lb
Depth to Bottom Packer:	ft				
Interval between Packers:	66.27 ft				
Tool Length:	94.27 ft				
Number of Packers:	2	Diameter: 6.75 inches			

Tool Comments:

Tool Description

Tool Description	Length (ft)	Serial No.	Position	Depth (ft)	Accum. Lengths
Shut-In Tool	5.00			4379.00	
Hydraulic tool	5.00			4384.00	
Jars	6.00			4390.00	
Safety Joint	2.00			4392.00	
Top Packer	5.00			4397.00	
Packer	5.00			4402.00	28.00 Bottom Of Top Packer
Anchor	3.00			4405.00	
Change Over Sub	1.00			4406.00	
Drill Pipe	31.27			4437.27	
Change Over Sub	1.00			4438.27	
Anchor	25.00			4463.27	
Recorder	1.00	6999	Inside	4464.27	
Recorder	1.00	8960	Outside	4465.27	
Bullnose	3.00			4468.27	66.27 Anchor Tool

Total Tool Length: 94.27



**TRILOBITE
TESTING, INC**

DRILL STEM TEST REPORT

FLUID SUMMARY

Questa Energy Corporation

23-12S-31W Gove,KS

PO Box 50968
Amarillo TX 79159+0968

Zerr #1-23

Job Ticket: 65114

DST#: 2

ATTN: Justin Carter

Test Start: 2016.08.25 @ 00:47:00

Mud and Cushion Information

Mud Type: Gel Chem

Cushion Type:

Oil API:

deg API

Mud Weight: 9.00 lb/gal

Cushion Length:

ft

Water Salinity:

ppm

Viscosity: 49.00 sec/qt

Cushion Volume:

bbbl

Water Loss: 7.19 in³

Gas Cushion Type:

Resistivity: ohm.m

Gas Cushion Pressure:

psig

Salinity: 3000.00 ppm

Filter Cake: 1.00 inches

Recovery Information

Recovery Table

Length ft	Description	Volume bbl
3.00	Mud 100%	0.026

Total Length: 3.00 ft Total Volume: 0.026 bbl

Num Fluid Samples: 0

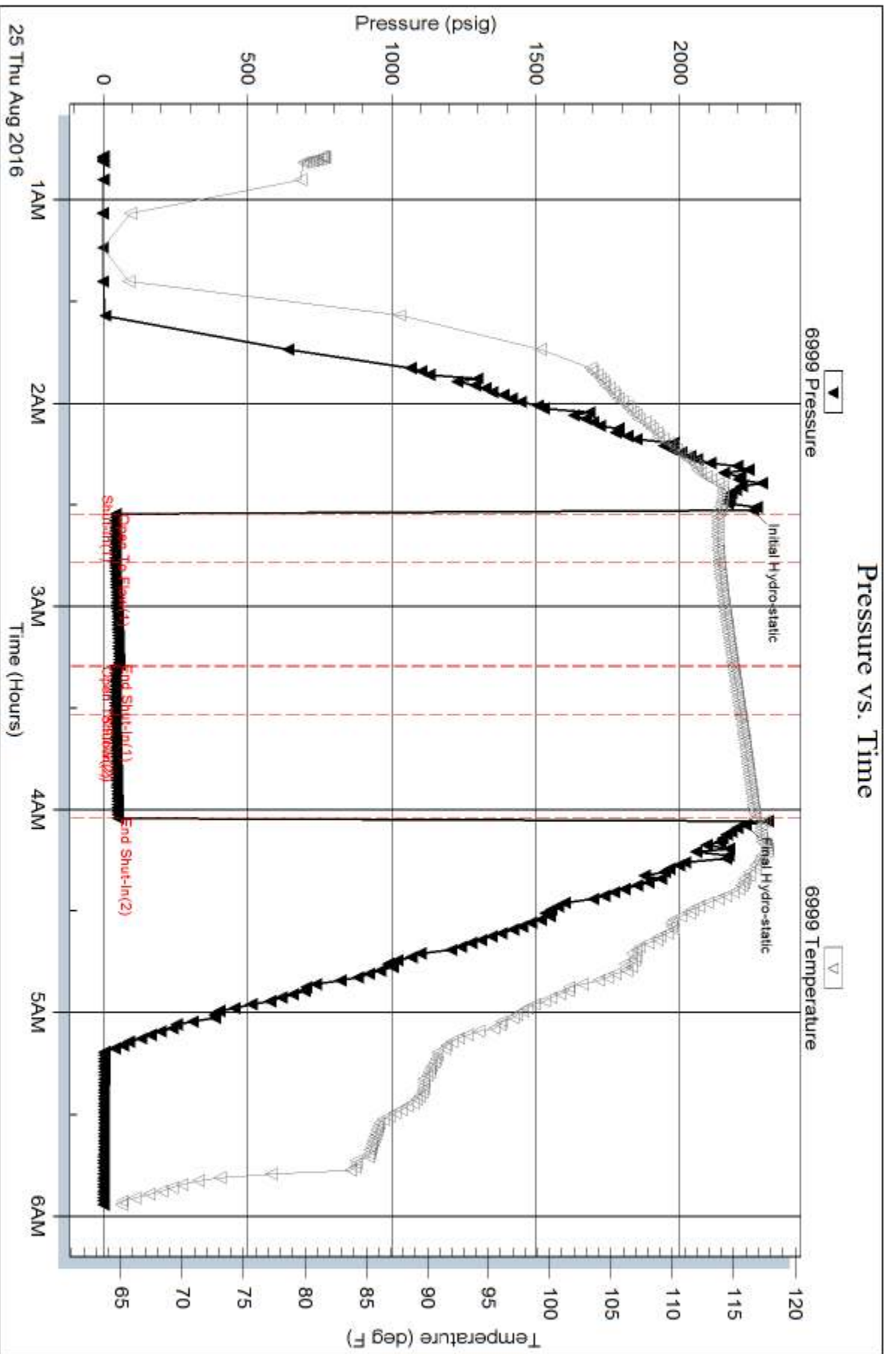
Num Gas Bombs: 0

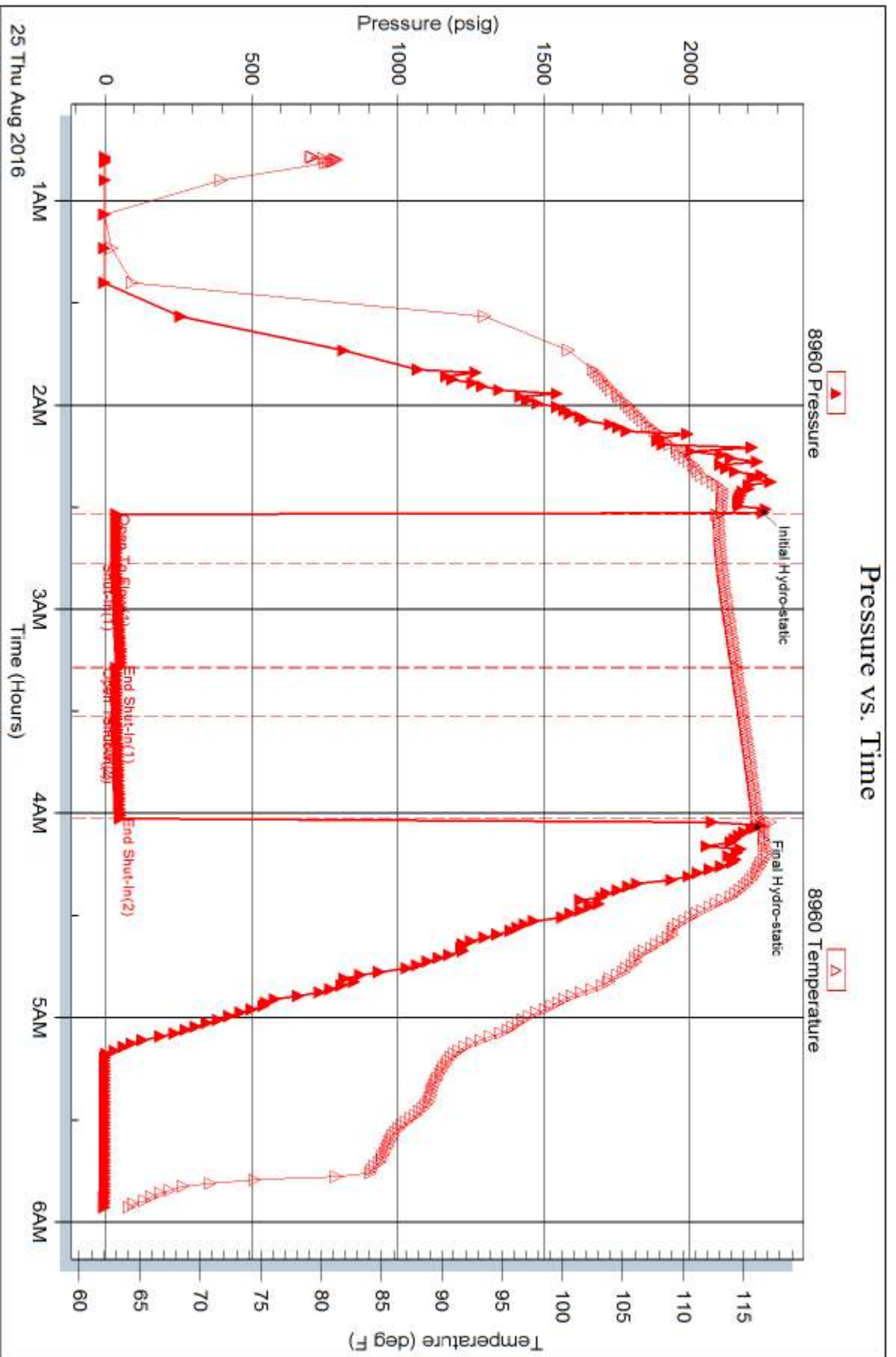
Serial #:

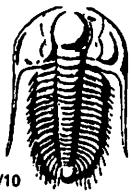
Laboratory Name:

Laboratory Location:

Recovery Comments:







TRILOBITE TESTING INC.

1515 Commerce Parkway • Hays, Kansas 67601

Test Ticket

NO. 65113

Well Name & No. Zerr #1-23 Test No. 1 Date 24 Aug 16
 Company Questa Energy Corporation Elevation 2837 KB 2829 GL
 Address PO Box 50968 Amarillo TX 79159-0968
 Co. Rep / Geo. _____ Rig Discovery Rig 2
 Location: Sec. 23 Twp. 125 Rge. 31W Co. Gove State KS

Interval Tested 4356-4390 Zone Tested Fort Scott
 Anchor Length 34 Drill Pipe Run 4031 Mud Wt. 9.0
 Top Packer Depth 4351 Drill Collars Run — Vis 48
 Bottom Packer Depth 4356 Wt. Pipe Run 317 WL 6.4
 Total Depth 4390 Chlorides 2000 ppm System LCM 2#

Blow Description I.F. Blow built to 4 1/2 inches
I.S.I No blowback
F.F. Blow built to 2 inches
F.S.I No blowback

Rec	Feet of	%gas	%oil	%water	%mud
62	Muddy Water			60%	40%
30	Oil cut Mud		5%		95%
30	Clean Oil	100%			
186	Gas in pipe	100%			

Rec Total 308 BHT 125 Gravity 34 API RW .24 @ 75 ° F Chlorides 26,000 ppm

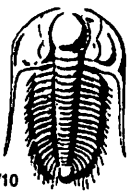
(A) Initial Hydrostatic <u>2108</u>	<input checked="" type="checkbox"/> Test <u>1150</u>	T-On Location <u>2:13 am</u>
(B) First Initial Flow <u>24</u>	<input checked="" type="checkbox"/> Jars <u>250</u>	T-Started <u>4:19 am</u>
(C) First Final Flow <u>33</u>	<input checked="" type="checkbox"/> Safety Joint <u>75</u>	T-Open <u>6:16 am</u>
(D) Initial Shut-In <u>1024</u>	<input type="checkbox"/> Circ Sub _____	T-Pulled <u>9:16 am</u>
(E) Second Initial Flow <u>36</u>	<input type="checkbox"/> Hourly Standby _____	T-Out <u>11:08 am</u>
(F) Second Final Flow <u>62</u>	<input checked="" type="checkbox"/> Mileage <u>84</u> <u>63</u>	Comments _____
(G) Final Shut-In <u>1070</u>	<input type="checkbox"/> Sampler _____	_____
(H) Final Hydrostatic <u>2079</u>	<input type="checkbox"/> Straddle _____	<input type="checkbox"/> Ruined Shale Packer _____

Initial Open 15
 Initial Shut-In 30
 Final Flow 45
 Final Shut-In 90

Sub Total 1538

Approved By [Signature] Our Representative [Signature]

Trilobite Testing Inc. shall not be liable for damaged of any kind of the property or personnel of the one for whom a test is made, or for any loss suffered or sustained, directly or indirectly, through the use of its equipment, or its statements or opinion concerning the results of any test, tools lost or damaged in the hole shall be paid for at cost by the party for whom the test is made.



TRILOBITE TESTING INC.

1515 Commerce Parkway • Hays, Kansas 67601

Test Ticket

NO. 65114

Well Name & No. Zerr # 1-23 Test No. 2 Date 25 Aug 16
 Company Quastra Energy Cooperation Elevation 2837 KB 2829 GL
 Address PO Box 50968 Amarillo TX 79159-0968
 Co. Rep / Geo. Justin Carter Rig Discovery Rig 2
 Location: Sec. 23 Twp. 125 Rge. 31W Co. Gove State K5

Interval Tested 4402-4468 Zone Tested Johnson
 Anchor Length 66 Drill Pipe Run 4061 Mud Wt. 9.3
 Top Packer Depth 4397 Drill Collars Run — Vis 49
 Bottom Packer Depth 4402 Wt. Pipe Run 317 WL 7.2
 Total Depth 4468 Chlorides 3000 ppm System LCM 2#

Blow Description I.F. Blow built to 1/8 inch
I.S.I no blow back
F.F. Dead no blow
F.S.I no blow back

Rec	Feet of	%gas	%oil	%water	%mud
3	Mud			100%	

Rec Total 3 BHT 117 Gravity _____ API RW _____ @ _____ °F Chlorides _____ ppm

(A) Initial Hydrostatic 2253 Test 1150 T-On Location 11:13 pm
 (B) First Initial Flow 43 Jars 250 T-Started 12:47 am
 (C) First Final Flow 42 Safety Joint 75 T-Open 2:32 am
 (D) Initial Shut-In 54 Circ Sub _____ T-Pulled 4:02 am
 (E) Second Initial Flow 42 Hourly Standby _____ T-Out 5:56 am
 (F) Second Final Flow 42 Mileage 84 63
 (G) Final Shut-In 50 Sampler _____
 (H) Final Hydrostatic 2227 Straddle _____

Initial Open 15 Ruined Shale Packer _____
 Initial Shut-In 30 Ruined Packer _____
 Final Flow 15 Extra Packer _____
 Final Shut-In 30 Extra Recorder _____
 Sub Total 1538 Day Standby _____
 Total 1538 Accessibility _____
 MP/DST Disc't _____

Approved By _____ Our Representative [Signature]
 Trilobite Testing Inc. shall not be liable for damaged of any kind of the property or personnel of the one for whom a test is made, or for any loss suffered or sustained, directly or indirectly, through the use of its equipment, or its statements or opinion concerning the results of any test, tools lost or damaged in the hole shall be paid for at cost by the party for whom the test is made.