



TRILOBITE TESTING, INC

DRILL STEM TEST REPORT

Culbreath Oil And Gas Comp.Inc.

28-11s-32 Logan Co. KS

3501 S Yale Ave.

H Dreiling Trust2 28

Tulsa Ok

Job Ticket: 64598

DST#: 1

74135

Test Start: 2016.08.10 @ 05:49:15

ATTN: Richard Bell

GENERAL INFORMATION:

Formation: **LKC I-J**

Deviated: No Whipstock: ft (KB)

Time Tool Opened: 07:48:30

Time Test Ended: 11:51:45

Test Type: Conventional Bottom Hole (Initial)

Tester: Mike Roberts

Unit No: 81

Interval: 4242.00 ft (KB) To 4290.00 ft (KB) (TVD)

Reference Elevations: 3073.00 ft (KB)

Total Depth: 4290.00 ft (KB) (TVD)

3063.00 ft (CF)

Hole Diameter: 7.88 inches Hole Condition: Fair

KB to GR/CF: 10.00 ft

Serial #: 6672 Outside

Press@RunDepth: 29.29 psig @ 4285.00 ft (KB)

Capacity: 8000.00 psig

Start Date: 2016.08.10 End Date: 2016.08.10

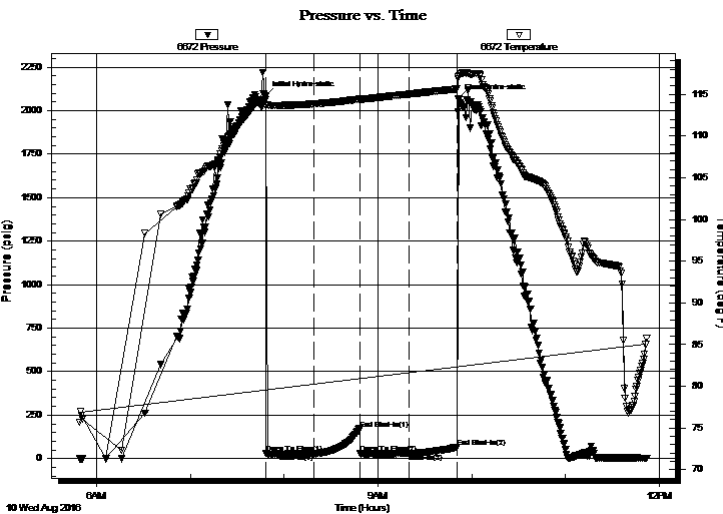
Last Calib.: 2016.08.10

Start Time: 05:49:15 End Time: 11:51:45

Time On Btm: 2016.08.10 @ 07:48:15

Time Off Btm: 2016.08.10 @ 09:51:30

TEST COMMENT: IF: Built to 1/8" blow
IS: No return blow
FF: No blow
FS: No return blow



PRESSURE SUMMARY

Time (Min.)	Pressure (psig)	Temp (deg F)	Annotation
0	2086.13	114.33	Initial Hydro-static
1	28.57	113.62	Open To Flow (1)
31	28.11	113.86	Shut-In(1)
60	169.35	114.42	End Shut-In(1)
61	29.00	114.38	Open To Flow (2)
92	29.29	115.02	Shut-In(2)
123	65.85	115.65	End Shut-In(2)
124	2071.43	117.12	Final Hydro-static

Recovery

Length (ft)	Description	Volume (bbl)
10.00	mud w ith oil spots	0.14

Gas Rates

	Choke (inches)	Pressure (psig)	Gas Rate (Mcf/d)



**TRILOBITE
TESTING, INC**

DRILL STEM TEST REPORT

Culbreath Oil And Gas Comp.Inc.

28-11s-32 Logan Co. KS

3501 S Yale Ave.
Tulsa Ok
74135
ATTN: Richard Bell

H Dreiling Trust2 28

Job Ticket: 64598 **DST#: 1**

Test Start: 2016.08.10 @ 05:49:15

GENERAL INFORMATION:

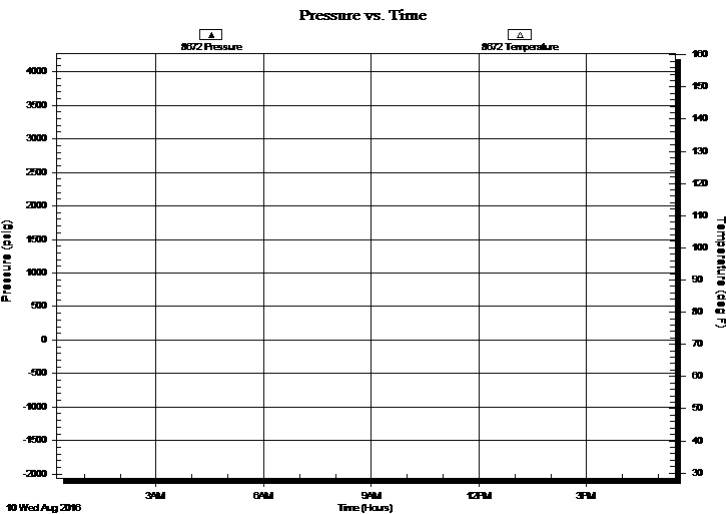
Formation: LKC I-J			
Deviated: No Whipstock:		ft (KB)	Test Type: Conventional Bottom Hole (Initial)
Time Tool Opened: 07:48:30			Tester: Mike Roberts
Time Test Ended: 11:51:45			Unit No: 81
Interval: 4242.00 ft (KB) To 4290.00 ft (KB) (TVD)			Reference Elevations: 3073.00 ft (KB)
Total Depth: 4290.00 ft (KB) (TVD)			3063.00 ft (CF)
Hole Diameter: 7.88 inches	Hole Condition: Fair		KB to GR/CF: 10.00 ft

Serial #: 8672 Inside

Press@RunDepth: psig @ 4285.00 ft (KB)
Start Date: End Date:
Start Time: End Time:

Capacity: 8000.00 psig
Last Calib.: 1899.12.30
Time On Btm:
Time Off Btm:

TEST COMMENT: IF:Built to 1/8" blow
IS:No return blow
FF:No blow
FS:No return blow



PRESSURE SUMMARY

Time (Min.)	Pressure (psig)	Temp (deg F)	Annotation

Recovery

Length (ft)	Description	Volume (bbl)
10.00	mud w ith oil spots	0.14

Gas Rates

Choke (inches)	Pressure (psig)	Gas Rate (Mcf/d)



**TRILOBITE
TESTING, INC**

DRILL STEM TEST REPORT

FLUID SUMMARY

Culbreath Oil And Gas Comp.Inc.

28-11s-32 Logan Co. KS

3501 S Yale Ave.

H Dreiling Trust2 28

Tulsa Ok

Job Ticket: 64598

DST#: 1

74135

Test Start: 2016.08.10 @ 05:49:15

ATTN: Richard Bell

Mud and Cushion Information

Mud Type: Gel Chem

Cushion Type:

Oil API:

0 deg API

Mud Weight: 9.00 lb/gal

Cushion Length:

ft

Water Salinity:

0 ppm

Viscosity: 54.00 sec/qt

Cushion Volume:

bbl

Water Loss: 7.47 in³

Gas Cushion Type:

Resistivity: 0.00 ohm.m

Gas Cushion Pressure:

psig

Salinity: 4000.00 ppm

Filter Cake: 1.00 inches

Recovery Information

Recovery Table

Length ft	Description	Volume bbl
10.00	mud w ith oil spots	0.140

Total Length: 10.00 ft Total Volume: 0.140 bbl

Num Fluid Samples: 0

Num Gas Bombs: 0

Serial #:

Laboratory Name:

Laboratory Location:

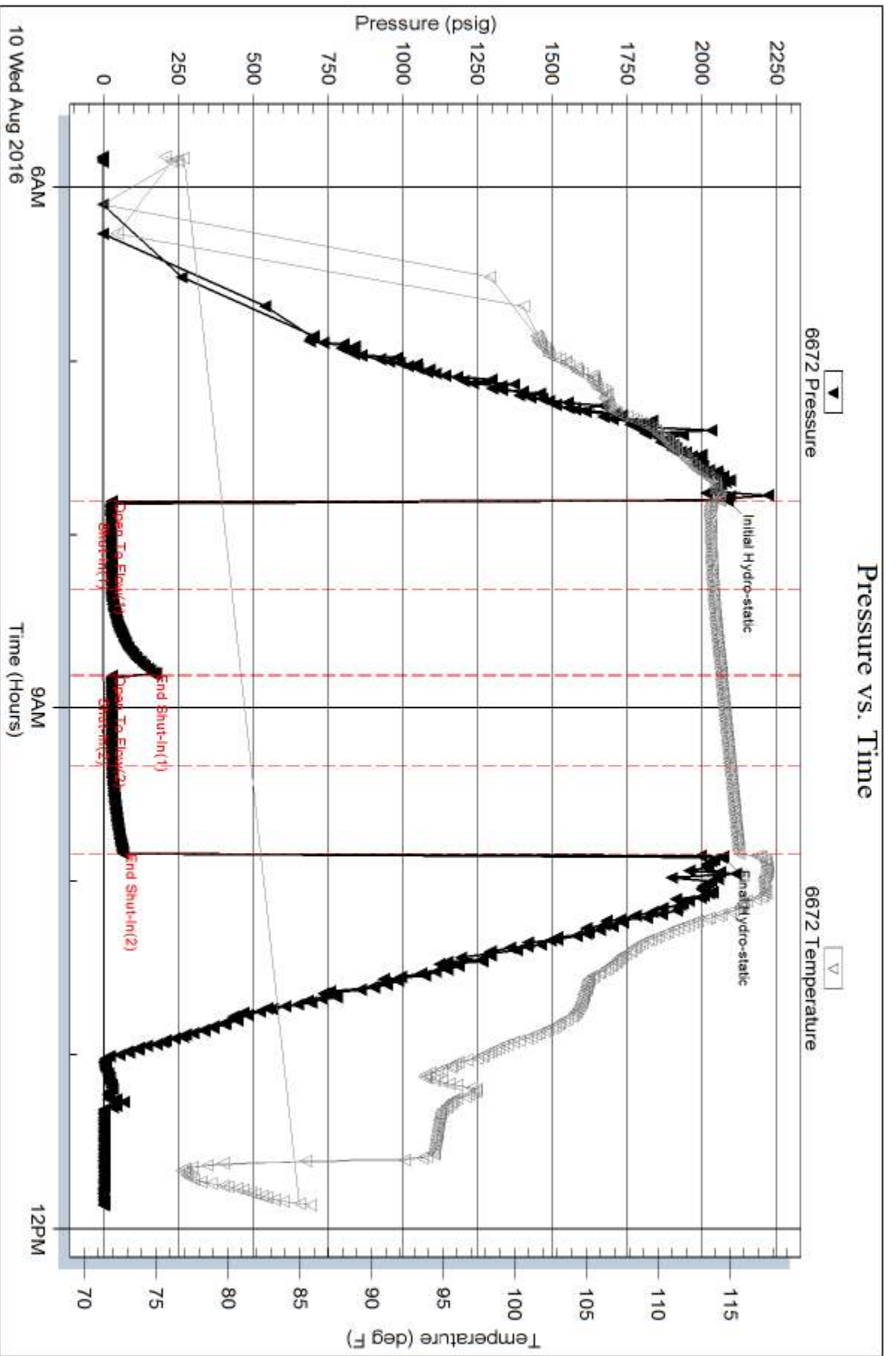
Recovery Comments:

Serial #: 6672

Outside Culbreath Oil And Gas Comp. Inc.

H Drilling Trust 28

DST Test Number: 1



Triobite Testing, Inc

Ref. No: 64598

Printed: 2016.08.10 @ 13:31:43

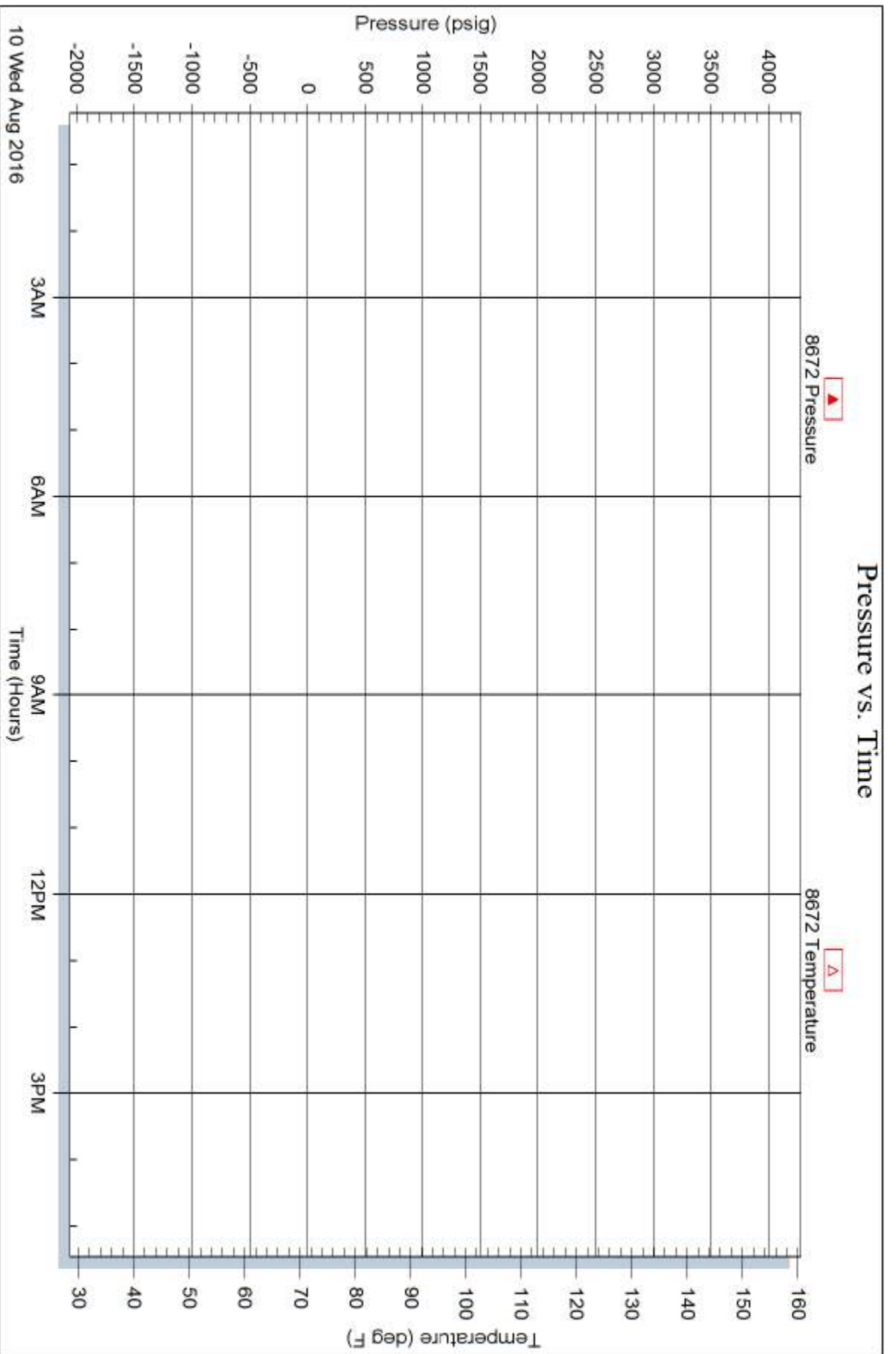
Serial #: 8672

Inside

Culbreath Oil And Gas Comp, Inc.

H Drilling Trust 28

DST Test Number: 1



Trilobite Testing, Inc

Ref. No: 64598

Printed: 2016.08.10 @ 13:31:43