



DRILL STEM TEST REPORT

Prepared For: **Griffin, Charles N**

PO Box 347
Pratt, KS 67124+0347

ATTN: Bruce Reed

Sharron #1

34-32s-12w Barber,KS

Start Date: 2016.08.03 @ 00:36:00

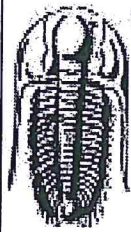
End Date: 2016.08.03 @ 05:36:30

Job Ticket #: 65106 DST #: 2

Trilobite Testing, Inc

PO Box 362 Hays, KS 67601

ph: 785-625-4778 fax: 785-625-5620



**TRILOBITE
TESTING, INC.**

DRILL STEM TEST REPORT

Griffin, Charles N
PO Box 347
Pratt, KS 67124+0347
ATTN: Bruce Reed

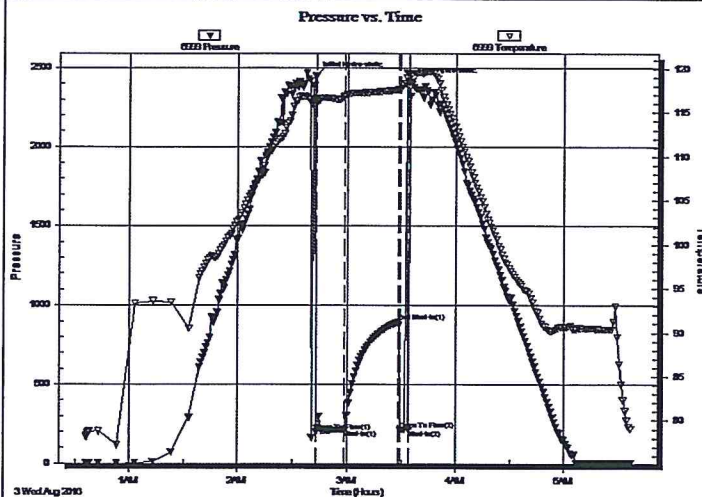
34-32s-12w Barber,KS
Sharron #1
Job Ticket: 65106 **DST#: 2**
Test Start: 2016.08.03 @ 00:36:00

GENERAL INFORMATION:

Formation: **Simpson Sand**
Deviated: No Whipstock: ft (KB)
Time Tool Opened: 02:43:00
Time Test Ended: 05:36:30
Interval: **4815.00 ft (KB) To 4850.00 ft (KB) (TVD)**
Total Depth: **4850.00 ft (KB) (TVD)**
Hole Diameter: **7.88 inches** Hole Condition: Fair
Test Type: Conventional Bottom Hole (Initial)
Tester: Ken Swinney
Unit No: 72
Reference Elevations: **1589.00 ft (KB)**
1584.00 ft (CF)
KB to GR/CF: **5.00 ft**

Serial #: 6999 Inside
Press@RunDepth: **211.73 psig @ 4846.00 ft (KB)** Capacity: **8000.00 psig**
Start Date: **2016.08.03** End Date: **2016.08.03** Last Calib.: **2016.08.03**
Start Time: **00:36:05** End Time: **05:36:29** Time On Btm: **2016.08.03 @ 02:42:30**
Time Off Btm: **2016.08.03 @ 03:35:00**

TEST COMMENT: Initial set on tool lost about 20 feet of mud, pulled up and tried reset still had mud loss for 4 minutes
IFP 15 Minutes BOB in 1 1/2 minutes, Mud loss for 4 minutes, when mud loss stopped blow dead
ISI 30 Minutes No blow back
FFP 10 Minutes Light surge at open, Flush tool, Light surge then dead, Pull test



PRESSURE SUMMARY

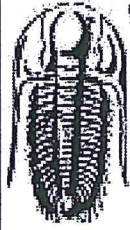
Time (Min.)	Pressure (psig)	Temp (deg F)	Annotation
0	2448.24	116.70	Initial Hydro-static
1	199.96	116.28	Open To Flow (1)
16	211.73	116.85	Shut-In(1)
46	895.11	117.64	End Shut-In(1)
47	211.38	117.61	Open To Flow (2)
52	212.00	118.58	Shut-In(2)
53	2415.39	119.34	Final Hydro-static

Recovery

Length (ft)	Description	Volume (bbl)
378.00	Mud w with show of oil/ Mud 100%	4.21

Gas Rates

Choke (inches)	Pressure (psig)	Gas Rate (Mcf/d)



**TRILOBITE
TESTING, INC.**

DRILL STEM TEST REPORT

Griffin, Charles N
PO Box 347
Pratt, KS 67124+0347
ATTN: Bruce Reed

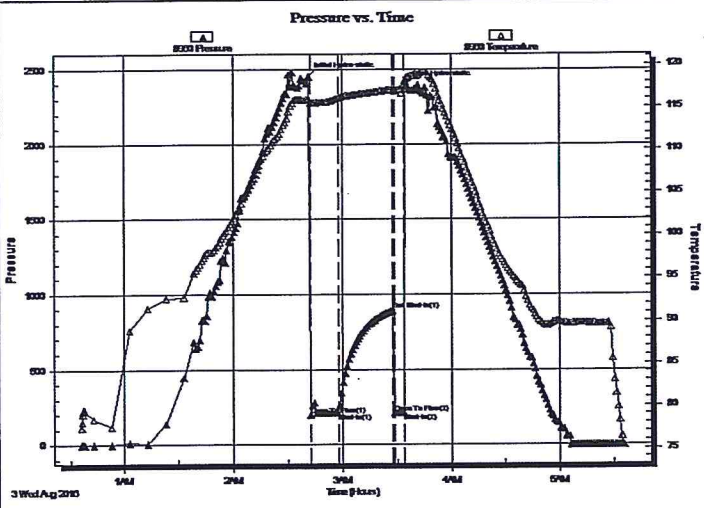
34-32s-12w Barber,KS
Sharron #1
Job Ticket: 65106 **DST#: 2**
Test Start: 2016.08.03 @ 00:36:00

GENERAL INFORMATION:

Formation: **Simpson Sand**
Deviated: No Whipstock: ft (KB)
Time Tool Opened: 02:43:00
Time Test Ended: 05:36:30
Interval: **4815.00 ft (KB) To 4850.00 ft (KB) (TVD)**
Total Depth: **4850.00 ft (KB) (TVD)**
Hole Diameter: **7.88 inches** Hole Condition: Fair
Test Type: Conventional Bottom Hole (Initial)
Tester: Ken Swinney
Unit No: 72
Reference Elevations: **1589.00 ft (KB)**
1584.00 ft (CF)
KB to GR/CF: **5.00 ft**

Serial #: 8960 **Outside**
Press@RunDepth: **893.47 psig @ 4847.00 ft (KB)** Capacity: **8000.00 psig**
Start Date: **2016.08.03** End Date: **2016.08.03** Last Calib.: **2016.08.03**
Start Time: **00:36:05** End Time: **05:35:59** Time On Btm: **2016.08.03 @ 02:41:30**
Time Off Btm: **2016.08.03 @ 03:35:00**

TEST COMMENT: Initial set on tool lost about 20 feet of mud, pulled up and tried reset still had mud loss for 4 minutes
IFP 15 Minutes BOB in 1 1/2 minutes, Mud loss for 4 minutes, when mud loss stopped blow dead
ISI 30 Minutes No blow back
FFP 10 Minutes Light surge at open, Flush tool, Light surge then dead, Pull test



PRESSURE SUMMARY

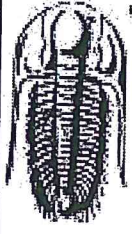
Time (Min.)	Pressure (psig)	Temp (deg F)	Annotation
0	2451.72	115.89	Initial Hydro-static
1	196.75	115.43	Open To Flow (1)
16	209.57	116.06	Shut-In(1)
46	893.47	117.07	End Shut-In(1)
47	209.24	116.90	Open To Flow (2)
52	209.93	117.49	Shut-In(2)
54	2394.62	118.36	Final Hydro-static

Recovery

Length (ft)	Description	Volume (bbl)
378.00	Mud w with show of oil/ Mud 100%	4.21

Gas Rates

Choke (inches)	Pressure (psig)	Gas Rate (Mcf/d)



**TRILOBITE
TESTING, INC.**

DRILL STEM TEST REPORT

TOOL DIAGRAM

Griffin, Charles N
 PO Box 347
 Pratt, KS 67124+0347
 ATTN: Bruce Reed

34-32s-12w Barber,KS
Sharron #1
 Job Ticket: 65106 **DST#: 2**
 Test Start: 2016.08.03 @ 00:36:00

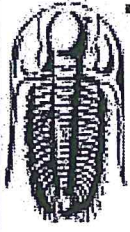
Tool Information

Drill Pipe:	Length: 4696.00 ft	Diameter: 3.80 inches	Volume: 65.87 bbl	Tool Weight: 2000.00 lb
Heavy Wt. Pipe:	Length: 0.00 ft	Diameter: 0.00 inches	Volume: 0.00 bbl	Weight set on Packer: 20000.00 lb
Drill Collar:	Length: 120.00 ft	Diameter: 2.25 inches	Volume: 0.59 bbl	Weight to Pull Loose: 70000.00 lb
			<u>Total Volume: 66.46 bbl</u>	Tool Chased 0.00 ft
Drill Pipe Above KB:	28.00 ft			String Weight: Initial 60000.00 lb
Depth to Top Packer:	4815.00 ft			Final 61000.00 lb
Depth to Bottom Packer:	ft			
Interval between Packers:	35.00 ft			
Tool Length:	62.00 ft			
Number of Packers:	2	Diameter: 6.75 inches		

Tool Comments:

Tool Description	Length (ft)	Serial No.	Position	Depth (ft)	Accum. Lengths
------------------	-------------	------------	----------	------------	----------------

Shut-In Tool	5.00			4793.00	
Hydraulic tool	5.00			4798.00	
Jars	5.00			4803.00	
Safety Joint	2.00			4805.00	
Top Packer	5.00			4810.00	
Packer	5.00			4815.00	27.00 Bottom Of Top Packer
Anchor	30.00			4845.00	
Recorder	1.00	6999	Inside	4846.00	
Recorder	1.00	8960	Outside	4847.00	
Bullnose	3.00			4850.00	35.00 Anchor Tool
Total Tool Length:	62.00				



**TRILOBITE
TESTING, INC**

DRILL STEM TEST REPORT

FLUID SUMMARY

Griffin, Charles N
PO Box 347
Pratt, KS 67124+0347
ATTN: Bruce Reed

34-32s-12w Barber,KS

Sharron #1

Job Ticket: 65106

DST#: 2

Test Start: 2016.08.03 @ 00:36:00

Mud and Cushion Information

Mud Type: Gel Chem
Mud Weight: 10.00 lb/gal
Viscosity: 52.00 sec/qt
Water Loss: 11.18 in³
Resistivity: ohm.m
Salinity: 5500.00 ppm
Filter Cake: 1.00 inches

Cushion Type:
Cushion Length: ft
Cushion Volume: bbl
Gas Cushion Type:
Gas Cushion Pressure: psig

Oil API:
Water Salinity: deg API
ppm

Recovery Information

Recovery Table

Length ft	Description	Volume bbl
378.00	Mud with show of oil/ Mud 100%	4.209

Total Length: 378.00 ft Total Volume: 4.209 bbl

Num Fluid Samples: 0 Num Gas Bombs: 0 Serial #:

Laboratory Name: Laboratory Location:

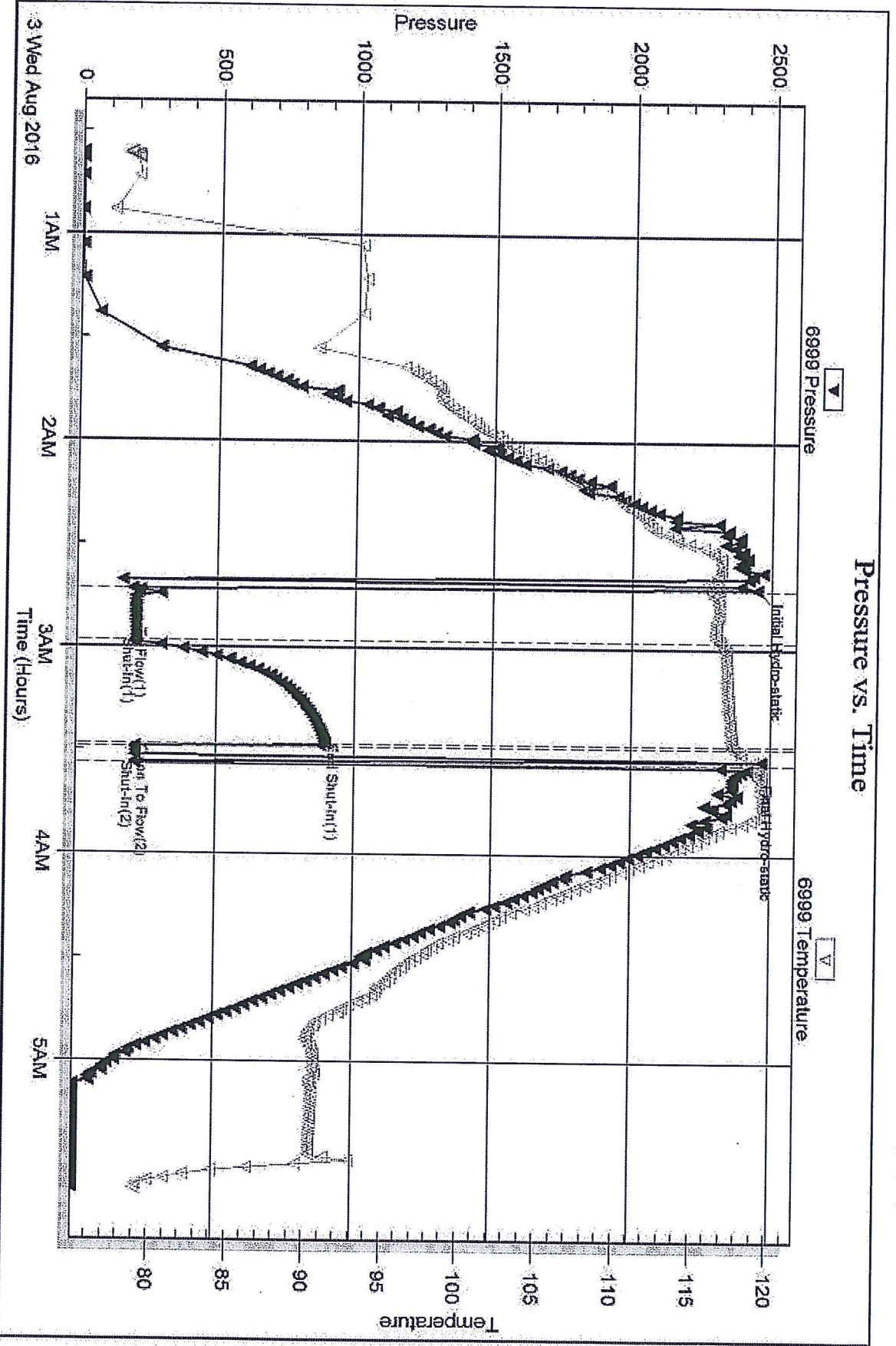
Recovery Comments:

Serial #: 6999

Inside Griffin, Charles N

Sharon #1

DSI Test Number: 2

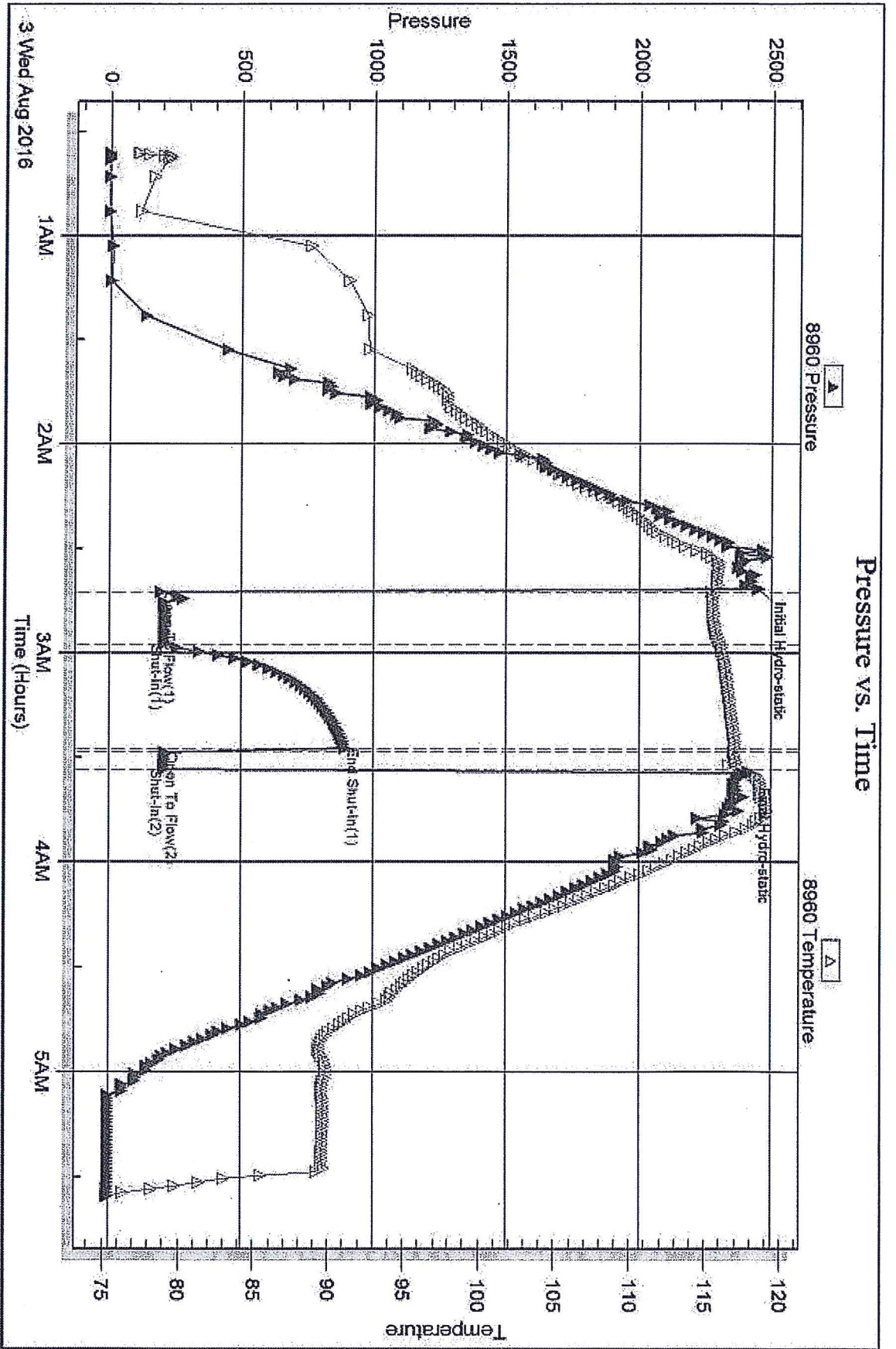


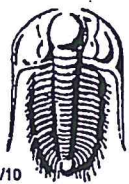
Triobite Testing, Inc

Ref. No: 65106

Printed: 2016.08.03 @ 13:22:19

Pressure vs. Time





TRILOBITE TESTING INC.

1515 Commerce Parkway • Hays, Kansas 67601

Test Ticket

NO. 65105

Well Name & No. Sharon #1 Test No. 1 Date 7 Aug 16
 Company Griffen, Charles N Elevation 1589 KB 1584 GL
 Address PO Box 347 Pratt Kansas 67124 + 0347
 Co. Rep./Geo. Bruce Reed Rig WW
 Location: Sec. 34 Twp. 32S Rge. 12W Co. Barber State KS

Interval Tested 4812-4834 Zone Tested Simpson Sand
 Anchor Length 22 Drill Pipe Run 4696 Mud Wt. 9.6
 Top Packer Depth 4807 Drill Collars Run 120 Vis SD
 Bottom Packer Depth 4812 Wt. Pipe Run - WL 11.2
 Total Depth 4834 Chlorides 5500 ppm System LCM 5#

Blow Description I.F. Few bubbles of open then dead
I.S.I. No blow back
F.F. No blow

F.S.I. No blow back

Rec	Feet of	%gas	%oil	%water	%mud
<u>1</u>	<u>mud</u>			<u>100%</u>	
Rec	Feet of	%gas	%oil	%water	%mud
Rec	Feet of	%gas	%oil	%water	%mud
Rec	Feet of	%gas	%oil	%water	%mud

Rec Total 1 BHT 120 Gravity API RW @ F Chlorides ppm
 (A) Initial Hydrostatic 2415 Test 1150 T-On Location 10:57 am
 (B) First Initial Flow 20 Jars 250 T-Started 11:52 am
 (C) First Final Flow 19 Safety Joint 75 T-Open 2:45 pm
 (D) Initial Shut-In 92 Circ Sub _____ T-Pulled 3:45 pm
 (E) Second Initial Flow 20 Hourly Standby _____ T-Out 5:45 pm
 (F) Second Final Flow 20 Mileage 74 55.50
 (G) Final Shut-In 63 Sampler _____
 (H) Final Hydrostatic 2396 Straddle _____

Initial Open 15 Ruined Shale Packer _____
 Initial Shut-In 15 Ruined Packer _____
 Final Flow 15 Extra Packer _____
 Final Shut-In 15 Extra Recorder _____
 Sub Total 0
 Total 1530.50
 MP/DST Disc't _____

Approved By Bruce A. Reed Our Representative [Signature]
 Trilobite Testing Inc. shall not be liable for damaged or any kind of the property or personnel of the one for whom a test is made, or for any loss suffered or sustained, directly or indirectly, through the use of its equipment, or its statements or opinion concerning the results of any test, tools lost or damaged in the hole shall be paid for at cost by the party for whom the test is made.



TRILOBITE TESTING INC.

1515 Commerce Parkway • Hays, Kansas 67601

Test Ticket

NO. 65106

Well Name & No. Slarron #2 Test No. 2 Date 3 Aug 16
 Company Griffin Charles N Elevation 1589 KB 1584 GL
 Address PO Box 347 Pratt, KS 67124+0347
 Co. Rep / Geo. Bruce Reed Rig WW
 Location: Sec. 34 Twp. 32S Rge. 12W Co. Barber State KS

Interval Tested 4815-4850 Zone Tested Simpson Sand
 Anchor Length 35 Drill Pipe Run 4696 Mud Wt. 9.6
 Top Packer Depth 4810 Drill Collars Run 120 Vis 52
 Bottom Packer Depth 4815 Wt. Pipe Run - WL 11.7
 Total Depth 4850 Chlorides 5500 ppm System LCM 3#

Blow Description I.F. Blow to bottom of bucket in 1 1/2 minutes, Loss of mud for about 4 in after mud loss stopped blow stopped

I.S.I no blow back

F.F. light surge at open then dead, flush tool light surge then dead, pull test

Rec	Feet of	%gas	%oil	%water	%mu
<u>378</u>	<u>mud with show of o.1</u>			<u>100</u>	
Rec	Feet of	%gas	%oil	%water	%mu
Rec	Feet of	%gas	%oil	%water	%mu
Rec	Feet of	%gas	%oil	%water	%mu
Rec	Feet of	%gas	%oil	%water	%mu

Rec Total 378 BHT 118 Gravity _____ API RW _____ @ _____ °F Chlorides _____ ppm

(A) Initial Hydrostatic 2448 Test 1150 T-On Location Slarron loc 1
 (B) First Initial Flow 199 Jars 250 T-Started 12:36 am
 (C) First Final Flow 211 Safety Joint 75 T-Open 2:43
 (D) Initial Shut-In 895 Circ Sub _____ T-Pulled 3:35
 (E) Second Initial Flow 211 Hourly Standby _____ T-Out 5:37
 (F) Second Final Flow 212 Mileage 74 Comments _____
 (G) Final Shut-In _____ Sampler _____
 (H) Final Hydrostatic 2415 Straddle _____ Ruined Shale Packer _____
 Shale Packer _____ Ruined Packer _____
 Extra Packer _____ Extra Copies _____

Initial Open 15 Extra Recorder _____ Sub Total 0
 Initial Shut-In 30 Day Standby _____ Total 1475
 Final Flow 10 Accessibility _____ MP/DST Disc't _____
 Final Shut-In _____

Sub Total 1475

Approved By Bruce A. Reed Our Representative [Signature]

Trilobite Testing Inc. shall not be liable for damaged or destroyed property or personnel of the one for whom a test is made, or for any loss suffered or sustained, directly or indirectly, through the use of its equipment, or its statements or opinion concerning the results of any test, tools lost or damaged in the hole shall be paid for at cost by the party for whom the test is made.