



DIAMOND TESTING, LLC
 P.O. Box 157
HOISINGTON, KANSAS 67544
 (620) 653-7550 • (800) 542-7313
 WILSONA455DST1

Company Vess Oil Corporation Lease & Well No. Wilson "A" No. 455
 Elevation 1390 KB Formation Arbuckle Effective Pay Ft. Ticket No. F436
 Date 8-21-16 Sec. 8 Twp. 25S Range 5E County Butler State Kansas
 Test Approved By Roger L. Martin Diamond Representative Jake Fahrenbruch

Formation Test No. 1 Interval Tested from 2,382 ft. to 2,401 ft. Total Depth 2,401 ft.
 Packer Depth 2,377 ft. Size 6 3/4 in. Packer Depth ft. Size in.
 Packer Depth 2,382 ft. Size 6 3/4 in. Packer Depth ft. Size in.
 Depth of Selective Zone Set ft.

Top Recorder Depth (Inside) 2,384 ft. Recorder Number 5951 Cap. 5,000 psi.
 Bottom Recorder Depth (Outside) 2,385 ft. Recorder Number 5584 Cap. 5,000 psi.
 Below Straddle Recorder Depth ft. Recorder Number Cap. psi.

Drilling Contractor C & G Drilling Company - Rig 2 Drill Collar Length 240 ft I.D. 2 1/4 in.
 Mud Type Chemical Viscosity 46 Weight Pipe Length ft I.D. in.
 Weight 9.0 Water Loss 7.8 cc. Drill Pipe Length 2,114 ft I.D. 3 1/2 in.
 Chlorides 500 P.P.M. Test Tool Length 28 ft Tool Size 3 1/2-IF in.
 Bars: Make Sterling Serial Number 5 Anchor Length 19 ft. Size 4 1/2-FH in.
 Did Well Flow? No Reversed Out No Surface Choke Size 1 in. Bottom Choke Size 5/8 in.
 Main Hole Size 7 7/8 in. Tool Joint Size 4 1/2-XH in.

Blow: 1st Open: Opened tool. Lost 10 ft. mud. 3 1/2 in. blow. Increased weight. Bled off. Blow increased to 1/2 in. No blow back during shut-in.
 2nd Open: No blow increasing to 1/2 in. by end. No blow back during shut-in.

Recovered 20 ft. of clean oil = .098400 bbls. (Grind out: 100%-oil) Gravity: 38 @ 60°
 Recovered 10 ft. of oily mud = .049200 bbls. (Grind out: 30%-oil; 70%-mud)
 Recovered 60 ft. of slightly oil cut mud = .295200 bbls. (Grind out: 5%-oil; 95%-mud)
 Recovered 90 ft. of TOTAL FLUID = .442800 bbls.

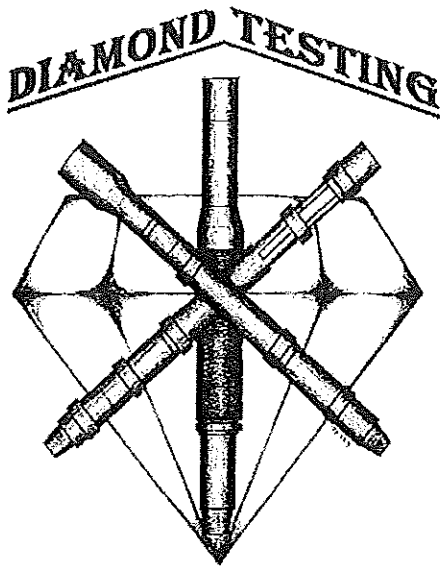
Recovered ft. of
 Recovered ft. of
 Remarks No gas in pipe.

Time Set Packer(s) 8:47 P.M. Time Started off Bottom 11:47 P.M. Maximum Temperature 106°
 Initial Hydrostatic Pressure.....(A) 1065 P.S.I.
 Initial Flow Period.....Minutes 30 (B) 44 P.S.I. to (C) 63 P.S.I.
 Initial Closed In Period.....Minutes 45 (D) 779 P.S.I.
 Final Flow Period.....Minutes 45 (E) 42 P.S.I. to (F) 73 P.S.I.
 Final Closed In Period.....Minutes 60 (G) 749 P.S.I.
 Final Hydrostatic Pressure.....(H) 1052 P.S.I.

DIAMOND TESTING GENERAL REPORT

Jake Fahrenbruch, Tester

Cell: (620) 282-8977 / Office: (800) 542-7313



TEST INFORMATION

Well Name	Wilson "A" #455
Company Name	Vess Oil Corp
Formation	DST #1, Arbuckle, 2382'-2401'
Test Type	Bottom-Hole w/J&J
Surface Location	Sec 8-25S-5E-Butler Co.-KS
KB Elevation (SL)	1390.000
Gauge Name	5951
Start Test Date	2016/08/21
Start Test Time	18:37:00
Final Test Date	2016/08/22
Final Test Time	02:33:00
Job Number	F436
Contact	Casey Coats
Site Contact	Roger Martin

TEST RESULTS

Initial flow, opened tool and lost about ten feet of mud, increased weight on tool, bled off blow, blow increased to .5". NBB
 Final flow, no blow, increasing to .5" by end of flow period. NBB

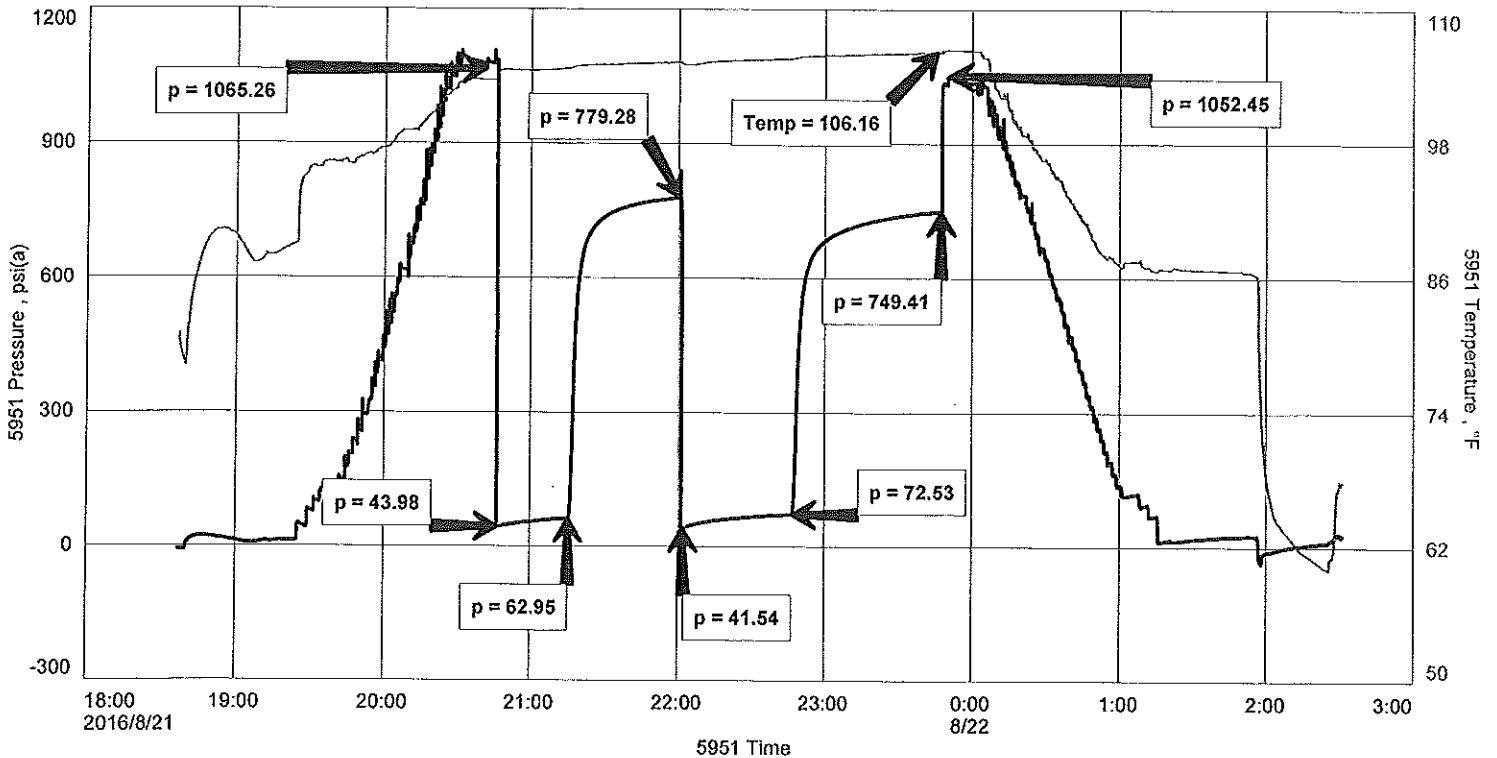
TOTAL FLUID RECOVERED: 90'

20'	Clean Oil	100% oil	Gravity: 38 @ 60 Deg F
10'	OM	30% oil, 70% mud	
60'	SOCM	5% oil, 95% mud	
-----	No GIP		

Vess Oil Corp
 DST #1 Arbuckle 2382'-2401'
 Start Test Date: 2016/08/21
 Final Test Date: 2016/08/22

Wilson "A" #455
 Formation: Arbuckle 2382'-2401'
 Pool: Infield
 Job Number: F436

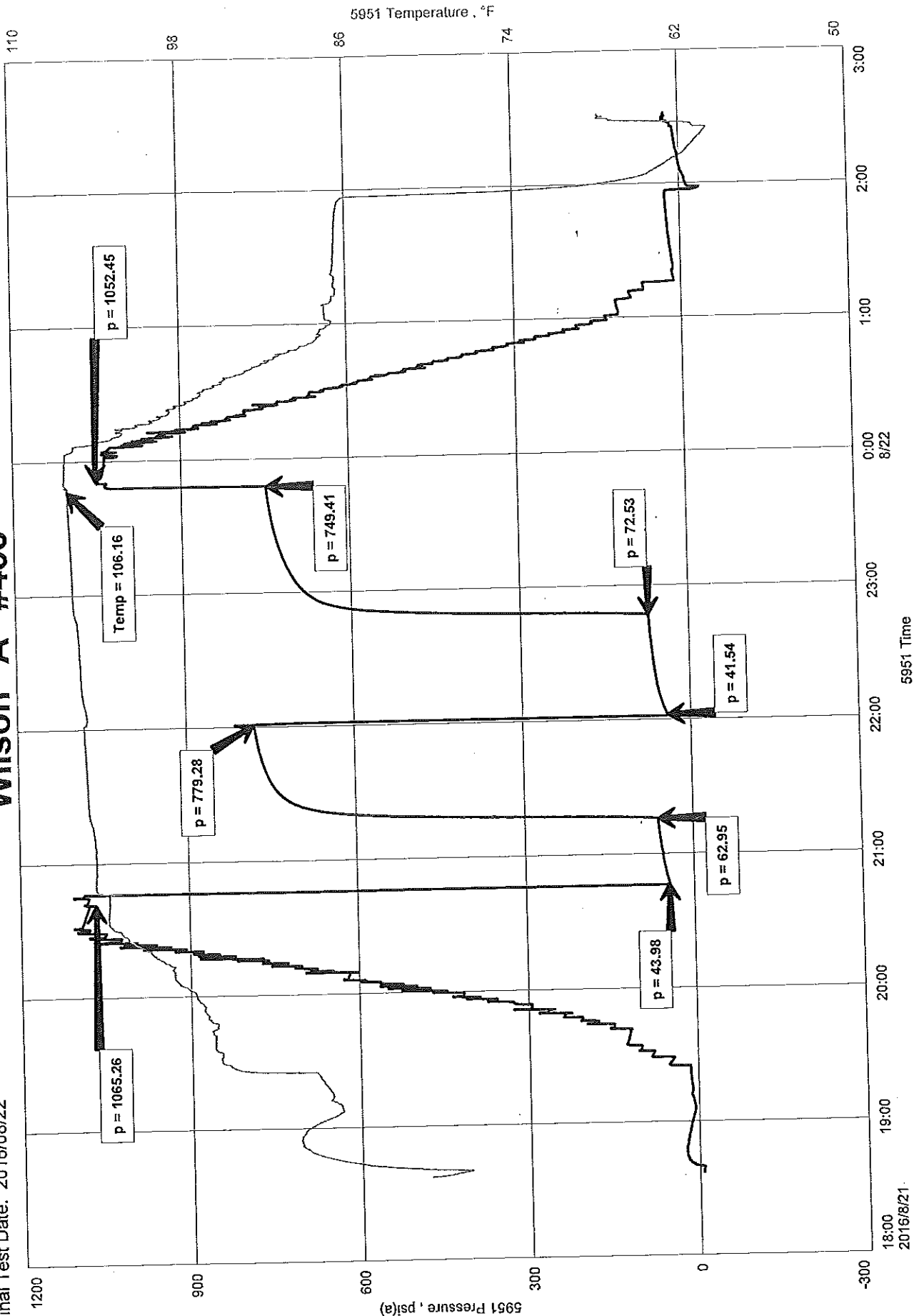
Wilson "A" #455



Wilson "A" #455
Formation: Arbuckle 2382'-2401'
Pool: Infield
Job Number: F436

Vess Oil Corp
DST #1 Arbuckle 2382'-2401'
Start Test Date: 2016/08/21
Final Test Date: 2016/08/22

Wilson "A" #455



5951 Temperature, °F

5951 Pressure, psi(a)

2016/8/21

5951 Time

8/22



DIAMOND TESTING, LLC
P.O. Box 157
HOISINGTON, KANSAS 67544
(620) 653-7550 • (800) 542-7313
WILSONA455DST2

Company Vess Oil Corporation Lease & Well No. Wilson "A" No. 455
Elevation 1390 KB Formation Arbuckle Effective Pay Ft. Ticket No. F437
Date 8-22-16 Sec. 8 Twp. 25S Range 5E County Butler State Kansas
Test Approved By Roger L. Martin Diamond Representative Jake Fahrenbruch

Formation Test No. 2 Interval Tested from 2,392 ft. to 2,421 ft. Total Depth 2,421 ft.
Packer Depth 2,387 ft. Size 6 3/4 in. Packer Depth ft. Size in.
Packer Depth 2,392 ft. Size 6 3/4 in. Packer Depth ft. Size in.
Depth of Selective Zone Set ft.

Top Recorder Depth (Inside) 2,393 ft. Recorder Number 5951 Cap. 5,000 psi.
Bottom Recorder Depth (Outside) 2,394 ft. Recorder Number 5584 Cap. 5,000 psi.
Below Straddle Recorder Depth ft. Recorder Number Cap. psi.

Drilling Contractor C & G Drilling Company - Rig 2 Drill Collar Length 240 ft I.D. 2 1/4 in.
Mud Type Chemical Viscosity 43 Weight Pipe Length ft I.D. in.
Weight 9.0 Water Loss 7.6 cc. Drill Pipe Length 2,124 ft I.D. 3 1/2 in.
Chlorides 500 P.P.M. Test Tool Length 28 ft Tool Size 3 1/2-IF in.
Lars: Make Sterling Serial Number 5 Anchor Length 29 ft. Size 4 1/2-FH in.
Did Well Flow? No Reversed Out No Surface Choke Size 1 in. Bottom Choke Size 5/8 in.
Main Hole Size 7 7/8 in. Tool Joint Size 4 1/2-XH in.

Blow: 1st Open: Blow increasing to 9 ins. No blow back during shut-in.
2nd Open: Blow increasing to 11 ins. Surface blow back during shut-in.

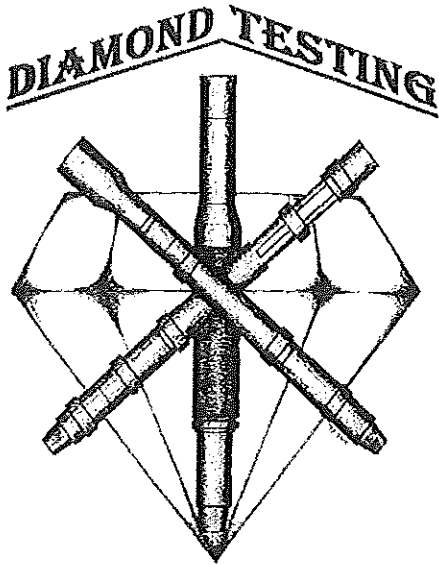
Recovered 20 ft. of free oil = .284600 bbls. (Grind out: 100%-oil) Gravity: 38 @ 60°
Recovered 120 ft. of water cut, oily mud = .590400 bbls. (Grind out: 32%-oil; 18%-water; 50%-mud)
Recovered 120 ft. of gas cut, oily, watery mud = .590400 bbls. (Grind out: 15%-gas; 25%-oil; 30%-water; 30%-mud)
Recovered 260 ft. of TOTAL FLUID = 1.465400 bbls. Chlorides: 18,500 Ppm PH: 8.0 RW: .32 @ 80°
Recovered ft. of
Recovered ft. of
Remarks No gas in pipe.

Time Set Packer(s) 12:42 P.M. Time Started off Bottom 3:42 A.M. Maximum Temperature 106°
Initial Hydrostatic Pressure.....(A) 1050 P.S.I.
Initial Flow Period.....Minutes 30 (B) 14 P.S.I. to (C) 98 P.S.I.
Initial Closed In Period.....Minutes 45 (D) 757 P.S.I.
Final Flow Period.....Minutes 45 (E) 62 P.S.I. to (F) 143 P.S.I.
Final Closed In Period.....Minutes 60 (G) 728 P.S.I.
Final Hydrostatic Pressure.....(H) 1030 P.S.I.

DIAMOND TESTING GENERAL REPORT

Jake Fahrenbruch, Tester

Cell: (620) 282-8977 / Office: (800) 542-7313



TEST INFORMATION

Well Name	Wilson "A" #455
Company Name	Vess Oil Corp
Formation	DST #2, Arbuckle, 2392'-2421'
Test Type	Bottom-Hole w/J&Jnt
Surface Location	Sec 8-25S-5E-Butler Co.-KS
KB Elevation (SL)	1390.000
Gauge Name	5951
Start Test Date	2016/08/22
Start Test Time	10:53:00
Final Test Date	2016/08/22
Final Test Time	18:47:00
Job Number	F437
Contact	Casey Coats
Site Contact	Roger Martin

TEST RESULTS

Initial flow, blow increased to 9" in bucket. No blowback.
 Final flow, blow increased to 11" in bucket. Surface blowback that died off.

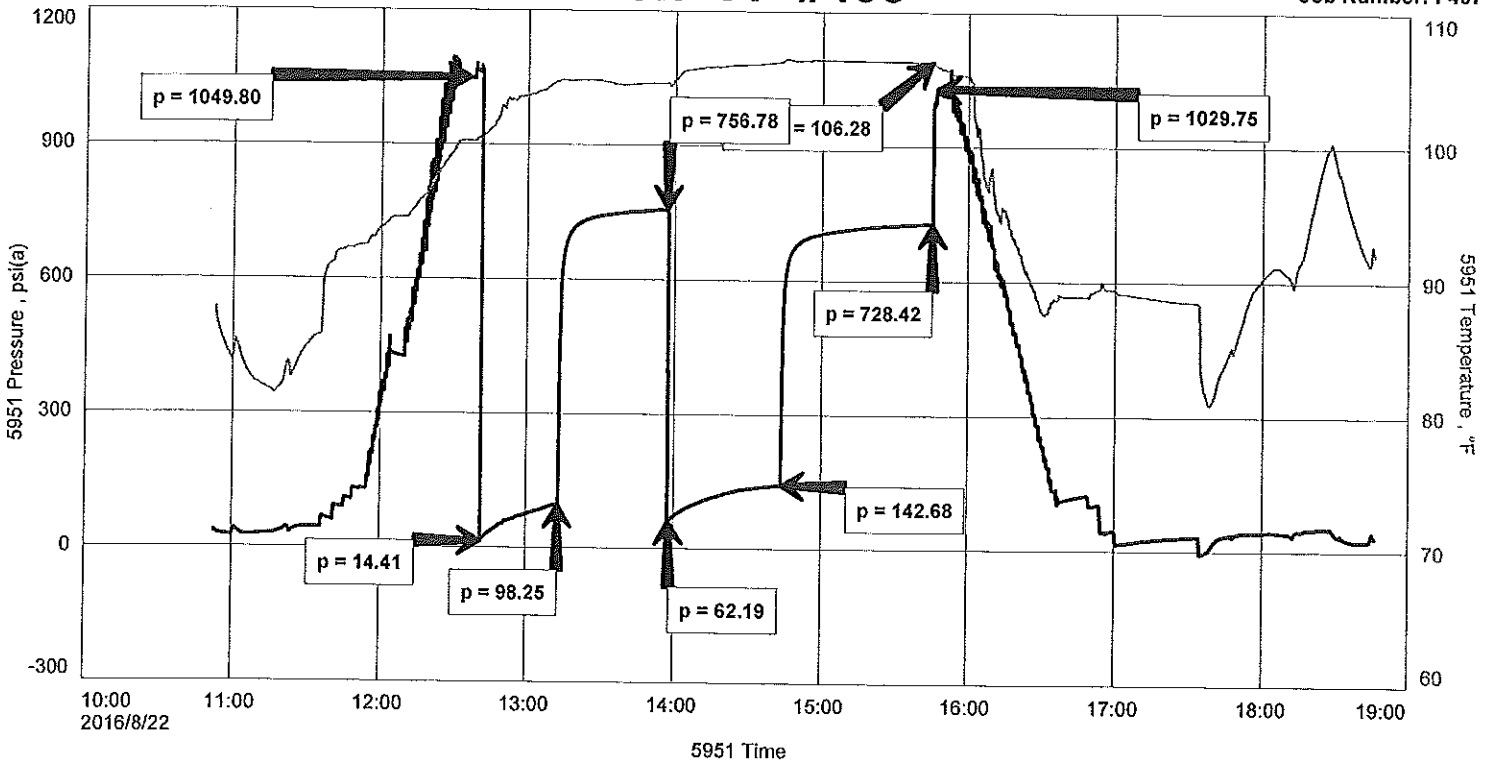
TOTAL FLUID RECOVERED: 260'

20'	Free Oil	100% oil	Gravity: 38 @ 60 Deg F
120'	WC OM	32% oil, 18% wtr, 50% mud	
120'	GC O WM	15% gas, 25% oil, 30% wtr, 30% mud	
----	No GIP		
----	Chlorides: 18,500 ppm	PH: 8.0	RW: .32 ohm @ 80 Deg F

Vess Oil Corp
 DST #2 Arbuckle 2392'-2421'
 Start Test Date: 2016/08/22
 Final Test Date: 2016/08/22

Wilson "A" #455
 Formation: Arbuckle 2392'-2421'
 Pool: Infield
 Job Number: F437

Wilson "A" #455



Wilson "A" #455
Formation: Arbuckle 2392'-2421'
Pool: Infield
Job Number: F437

Vess Oil Corp
DST #2 Arbuckle 2392'-2421'
Start Test Date: 2016/08/22
Final Test Date: 2016/08/22

Wilson "A" #455

