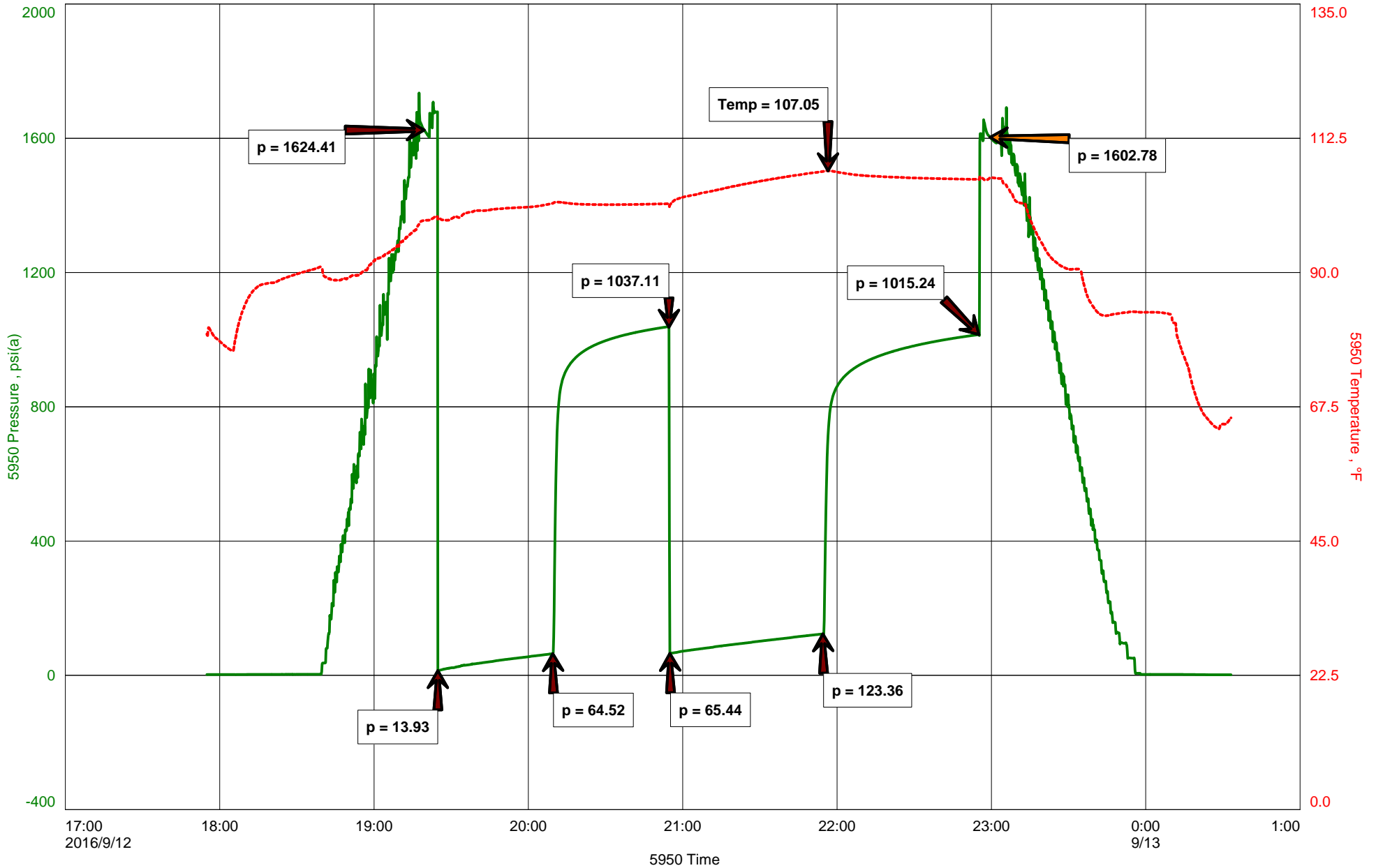


RJM
Dst #5 Arbuckle 3400-3468'
Start Test Date: 2016/09/12
Final Test Date: 2016/09/12

Ervin #1
Formation: Dst #5 Arbuckle 3400-3468'
Pool: Infield
Job Number: P0132

Ervin #1





Michael Carroll
 620-617-0368
 carroll.dtlc@gmail.com

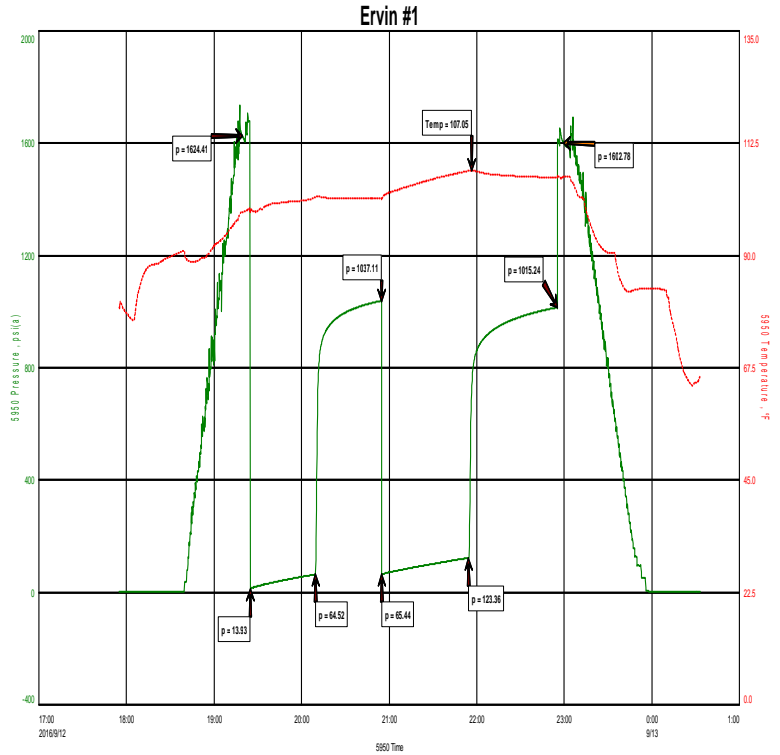
Hoisington, Kansas

General Information

Company Name RJM

Contact	Chris Hoffman
Well Name	Ervin #1
Unique Well ID	Dst #5 Arbuckle 3400-3468'
Surface Location	Sec 31-17s-14w Barton County
Field	Hlavaty
Well Type	Vertical
Test Type	Drill Stem Test
Well Operator	RJM

Formation	Dst #5 Arbuckle 3400-3468'
Well Fluid Type	06 Water
Test Purpose	Initial Test
Start Test Date	2016/09/12
Start Test Time	17:55:00
Final Test Time	00:34:00
Job Number	P0132
Report Date	2016/09/12
Prepared By	Michael Carroll



TEST RECOVERY

Remarks	Recovery:	53'	WM	40%W	60%M
		63'	MW	60%W	40%M
		126'	MCW	90%W	10%M

Total Fluid: 242'

Tool Sample: 100% Water

Chlorides 33000 PPM
 RW .2 @ 70 Degrees
 PH 7



DIAMOND TESTING
P.O. Box 157
HOISINGTON, KANSAS 67544
(800) 542-7313
DRILL-STEM TEST TICKET
FILE: ERVIN#1DST#5

TIME ON: 1755 9-12
TIME OFF: 0034 9-13

Company RJM Lease & Well No. ERVIN #1
Contractor SOUTHWIND DRLG RIG 3 Charge to RJM
Elevation 1943EST Formation ARBUCKLE Effective Pay _____ Ft. Ticket No. P0132
Date 9-12-16 Sec. 31 Twp. 17 S Range 14 W County BARTON State KANSAS
Test Approved By JIM MUSGROVE Diamond Representative Michael Carroll

Formation Test No. 5 Interval Tested from 3400 ft. to 3468 ft. Total Depth 3468 ft.
Packer Depth 3395 ft. Size 6 3/4 in. Packer depth _____ ft. Size 6 3/4 in.
Packer Depth 3400 ft. Size 6 3/4 in. Packer depth _____ ft. Size 6 3/4 in.

Depth of Selective Zone Set _____
Top Recorder Depth (Inside) 3388 ft. Recorder Number 5950 Cap. 5000 P.S.I.
Bottom Recorder Depth (Outside) 3437 ft. Recorder Number 0230 Cap. 5000 P.S.I.
Below Straddle Recorder Depth _____ ft. Recorder Number _____ Cap. _____ P.S.I.

Mud Type Chem Viscosity 47 Drill Collar Length 0 ft. I.D. 2 1/4 in.
Weight 9.4 Water Loss 8.0 cc. Weight Pipe Length 0 ft. I.D. 2 7/8 in.
Chlorides 5000 P.P.M. Drill Pipe Length 3375 ft. I.D. 3 1/2 in.
Jars: Make STERLING Serial Number NA Test Tool Length 25 ft. Tool Size 3 1/2-IF in.
Did Well Flow? NO Reversed Out NO Anchor Length 68(36.5A) ft. Size 4 1/2-FH in.
Main Hole Size 7 7/8 Tool Joint Size 4 1/2 XH in. Surface Choke Size 1 in. Bottom Choke Size 5/8 in.

Blow: 1st Open: 1/4" BLOW-BUILT TO 11" IN 45 MINUTES WSBB
2nd Open: NO BLOW-BUILT TO 11 1/2" IN 60 MINUTES NOBB

Recovered 53 ft. of WM 40%W 60%M CHLORIDES 33000 PPM
Recovered 63 ft. of MW 60%W 40%M RW .2 @ 70 DEGREES
Recovered 126 ft. of MCW 90%W 10%M PH 7
Recovered 242 ft. of TOTAL FLUID

Recovered _____ ft. of _____	Price Job
Recovered _____ ft. of _____	Other Charges
Remarks: <u>TOOL SAMPLE: 100% WATER</u>	Insurance
	Total

Time Set Packer(s) 7:23 P.M. A.M. P.M. Time Started Off Bottom 10:53 P.M. A.M. P.M. Maximum Temperature 107

Initial Hydrostatic Pressure..... (A) 1624 P.S.I.
Initial Flow Period..... Minutes 45 (B) 14 P.S.I. to (C) 65 P.S.I.
Initial Closed In Period..... Minutes 45 (D) 1037 P.S.I.
Final Flow Period..... Minutes 60 (E) 65 P.S.I. to (F) 123 P.S.I.
Final Closed In Period..... Minutes 60 (G) 1015 P.S.I.
Final Hydrostatic Pressure..... (H) 1603 P.S.I.

Diamond Testing shall not be liable for damages of any kind to the property or personnel of the one for whom a test is made or for any loss suffered or sustained, directly or indirectly, through the use of its equipment, or its statement or opinion concerning the result of any test. Tools lost or damaged in the hole shall be paid for at cost by the party for whom the test is made.