



DRILL STEM TEST REPORT

Prepared For: **American Warrior Inc**

PO Box 399
Garden City, KS 67846

ATTN: Jason Alm

Doll Mabel #1-18

18-23s-23w Hodgeman,KS

Start Date: 2016.09.07 @ 07:24:00

End Date: 2016.09.07 @ 12:44:00

Job Ticket #: 65118 DST #: 1

Trilobite Testing, Inc

PO Box 362 Hays, KS 67601

ph: 785-625-4778 fax: 785-625-5620

Printed: 2016.09.08 @ 08:39:25

American Warrior Inc

18-23s-23w Hodgeman,KS

Doll Mabel #1-18

DST # 1

Cherokee Sand

2016.09.07



**TRILOBITE
TESTING, INC**

DRILL STEM TEST REPORT

American Warrior Inc
PO Box 399
Garden City, KS 67846
ATTN: Jason Alm

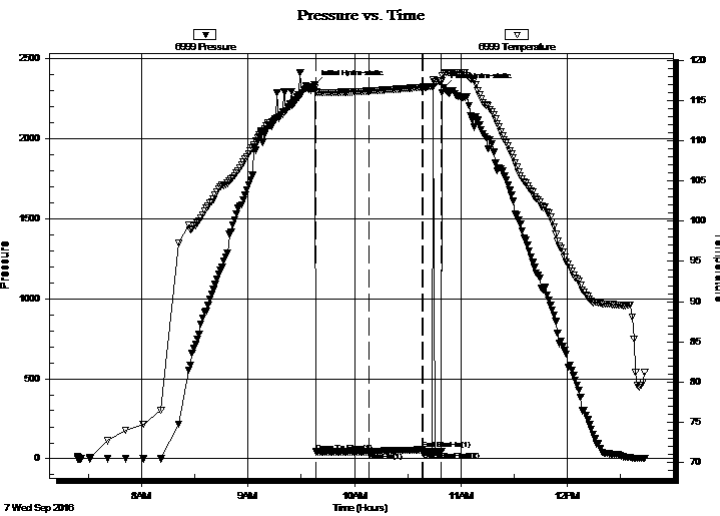
18-23s-23w Hodgeman,KS
Doll Mabel #1-18
Job Ticket: 65118 **DST#: 1**
Test Start: 2016.09.07 @ 07:24:00

GENERAL INFORMATION:

Formation: **Cherokee Sand**
Deviated: No Whipstock: ft (KB)
Time Tool Opened: 09:38:30
Time Test Ended: 12:44:00
Interval: **4685.00 ft (KB) To 4746.00 ft (KB) (TVD)**
Total Depth: 4746.00 ft (KB) (TVD)
Hole Diameter: 7.88 inches Hole Condition: Fair
Reference Elevations: 2433.00 ft (KB)
2425.00 ft (CF)
KB to GR/CF: 8.00 ft
Test Type: Conventional Bottom Hole (Initial)
Tester: Ken Swinney
Unit No: 72

Serial #: 6999 Inside
Press@RunDepth: 43.33 psig @ 4741.65 ft (KB) Capacity: 8000.00 psig
Start Date: 2016.09.07 End Date: 2016.09.07 Last Calib.: 2016.09.07
Start Time: 07:24:05 End Time: 12:43:59 Time On Btm: 2016.09.07 @ 09:37:30
Time Off Btm: 2016.09.07 @ 10:50:30

TEST COMMENT: IFP 30 Minutes Surface blow died in 14 mintues
ISI 30 Minutes No blow back
FFP 10 Minutes Dead - Flush tool no help - Pull test



PRESSURE SUMMARY

Time (Min.)	Pressure (psig)	Temp (deg F)	Annotation
0	2336.01	116.54	Initial Hydro-static
1	42.66	116.03	Open To Flow (1)
31	43.33	116.17	Shut-In(1)
61	56.68	116.65	End Shut-In(1)
61	44.91	116.66	Open To Flow (2)
72	46.64	117.40	Shut-In(2)
73	2319.53	118.37	Final Hydro-static

Recovery

Length (ft)	Description	Volume (bbl)
5.00	Mud 100%	0.02

Gas Rates

Choke (inches)	Pressure (psig)	Gas Rate (Mcf/d)



TRILOBITE TESTING, INC

DRILL STEM TEST REPORT

American Warrior Inc
 PO Box 399
 Garden City, KS 67846
 ATTN: Jason Alm

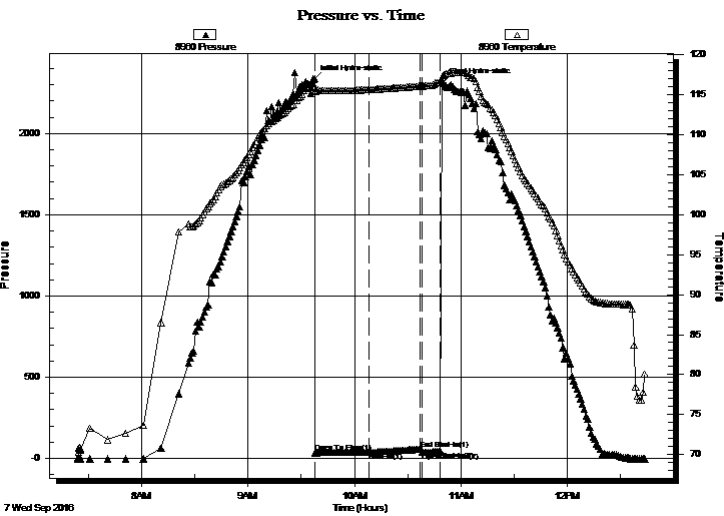
18-23s-23w Hodgeman,KS
Doll Mabel #1-18
 Job Ticket: 65118 **DST#: 1**
 Test Start: 2016.09.07 @ 07:24:00

GENERAL INFORMATION:

Formation: **Cherokee Sand**
 Deviated: No Whipstock: ft (KB)
 Time Tool Opened: 09:38:30
 Time Test Ended: 12:44:00
Interval: 4685.00 ft (KB) To 4746.00 ft (KB) (TVD)
 Total Depth: 4746.00 ft (KB) (TVD)
 Hole Diameter: 7.88 inches Hole Condition: Fair
 Test Type: Conventional Bottom Hole (Initial)
 Tester: Ken Swinney
 Unit No: 72
 Reference Elevations: 2433.00 ft (KB)
 2425.00 ft (CF)
 KB to GR/CF: 8.00 ft

Serial #: 8960 Outside
 Press@RunDepth: 57.28 psig @ 4742.65 ft (KB) Capacity: 8000.00 psig
 Start Date: 2016.09.07 End Date: 2016.09.07 Last Calib.: 2016.09.07
 Start Time: 07:24:05 End Time: 12:43:29 Time On Btm: 2016.09.07 @ 09:37:00
 Time Off Btm: 2016.09.07 @ 10:50:00

TEST COMMENT: IFP 30 Minutes Surface blow died in 14 mintues
 ISI 30 Minutes No blow back
 FFP 10 Minutes Dead - Flush tool no help - Pull test



PRESSURE SUMMARY

Time (Min.)	Pressure (psig)	Temp (deg F)	Annotation
0	2331.11	115.96	Initial Hydro-static
1	36.01	115.45	Open To Flow (1)
31	37.95	115.64	Shut-In(1)
60	57.28	116.08	End Shut-In(1)
61	38.82	116.07	Open To Flow (2)
72	42.10	116.56	Shut-In(2)
73	2315.84	117.38	Final Hydro-static

Recovery

Length (ft)	Description	Volume (bbl)
5.00	Mud 100%	0.02

Gas Rates

	Choke (inches)	Pressure (psig)	Gas Rate (Mcf/d)



**TRILOBITE
TESTING, INC**

DRILL STEM TEST REPORT

TOOL DIAGRAM

American Warrior Inc
PO Box 399
Garden City, KS 67846
ATTN: Jason Alm

18-23s-23w Hodgeman,KS
Doll Mabel #1-18
Job Ticket: 65118 **DST#: 1**
Test Start: 2016.09.07 @ 07:24:00

Tool Information

Drill Pipe:	Length: 4658.00 ft	Diameter: 3.80 inches	Volume: 65.34 bbl	Tool Weight:	2000.00 lb
Heavy Wt. Pipe:	Length: 0.00 ft	Diameter: 0.00 inches	Volume: 0.00 bbl	Weight set on Packer:	20000.00 lb
Drill Collar:	Length: 30.00 ft	Diameter: 2.25 inches	Volume: 0.15 bbl	Weight to Pull Loose:	100000.0 lb
			<u>Total Volume: 65.49 bbl</u>	Tool Chased	0.00 ft
Drill Pipe Above KB:	31.00 ft			String Weight: Initial	71000.00 lb
Depth to Top Packer:	4685.00 ft			Final	71000.00 lb
Depth to Bottom Packer:	ft				
Interval between Packers:	60.65 ft				
Tool Length:	88.65 ft				
Number of Packers:	2	Diameter: 6.75 inches			

Tool Comments:

Tool Description	Length (ft)	Serial No.	Position	Depth (ft)	Accum. Lengths
-------------------------	--------------------	-------------------	-----------------	-------------------	-----------------------

Shut-In Tool	5.00			4662.00	
Hydraulic tool	5.00			4667.00	
Jars	6.00			4673.00	
Safety Joint	2.00			4675.00	
Top Packer	5.00			4680.00	
Packer	5.00			4685.00	28.00 Bottom Of Top Packer
Anchor	2.00			4687.00	
Change Over Sub	1.00			4688.00	
Drill Pipe	31.65			4719.65	
Change Over Sub	1.00			4720.65	
Anchor	20.00			4740.65	
Recorder	1.00	6999	Inside	4741.65	
Recorder	1.00	8960	Outside	4742.65	
Bullnose	3.00			4745.65	60.65 Anchor Tool

Total Tool Length: 88.65



**TRILOBITE
TESTING, INC**

DRILL STEM TEST REPORT

FLUID SUMMARY

American Warrior Inc
PO Box 399
Garden City, KS 67846
ATTN: Jason Alm

18-23s-23w Hodgeman,KS
Doll Mabel #1-18
Job Ticket: 65118 **DST#: 1**
Test Start: 2016.09.07 @ 07:24:00

Mud and Cushion Information

Mud Type: Gel Chem	Cushion Type:	Oil API:	deg API
Mud Weight: 9.00 lb/gal	Cushion Length: ft	Water Salinity:	ppm
Viscosity: 48.00 sec/qt	Cushion Volume: bbl		
Water Loss: 8.77 in ³	Gas Cushion Type:		
Resistivity: ohm.m	Gas Cushion Pressure: psig		
Salinity: 4600.00 ppm			
Filter Cake: 1.00 inches			

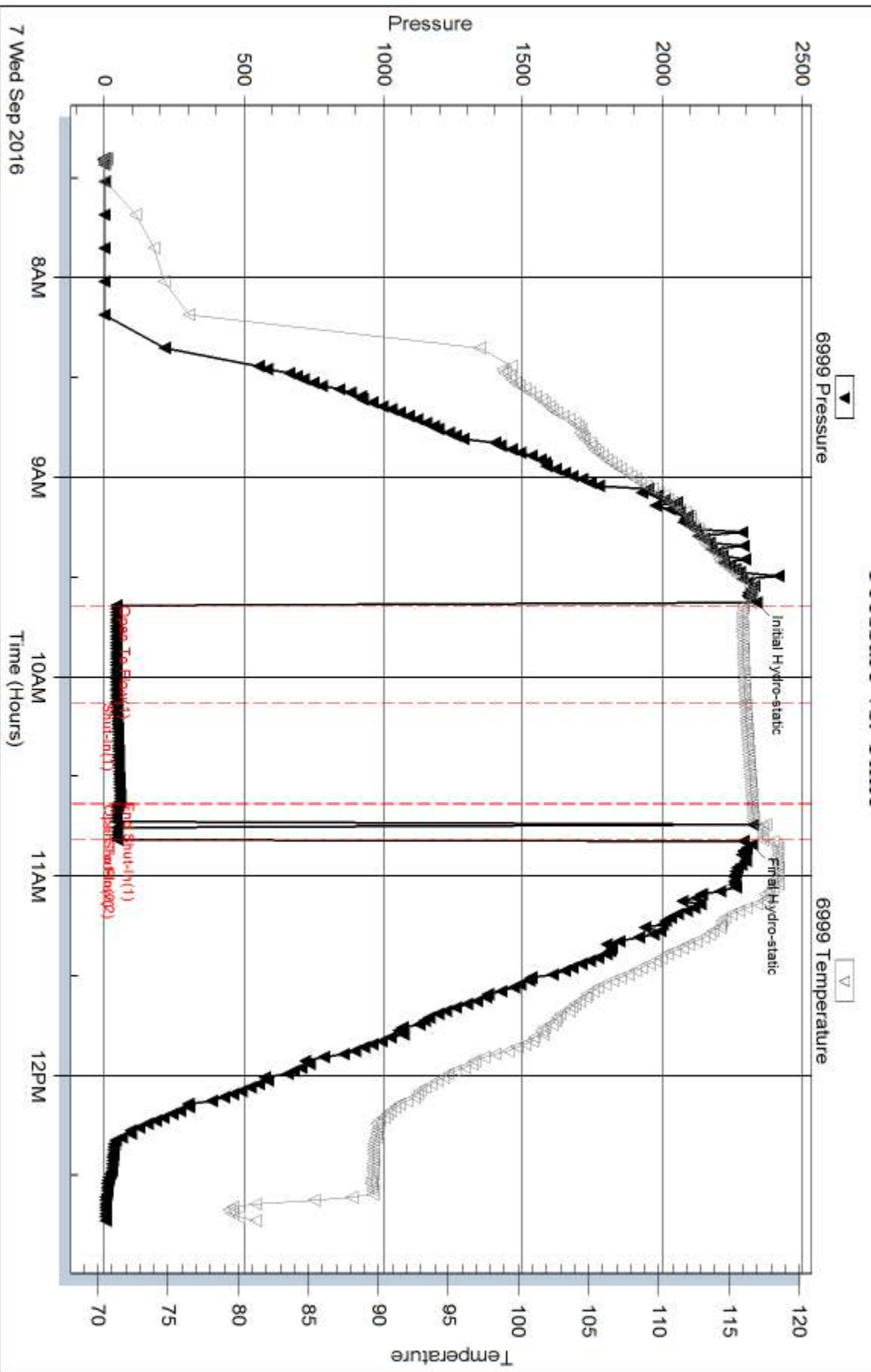
Recovery Information

Recovery Table

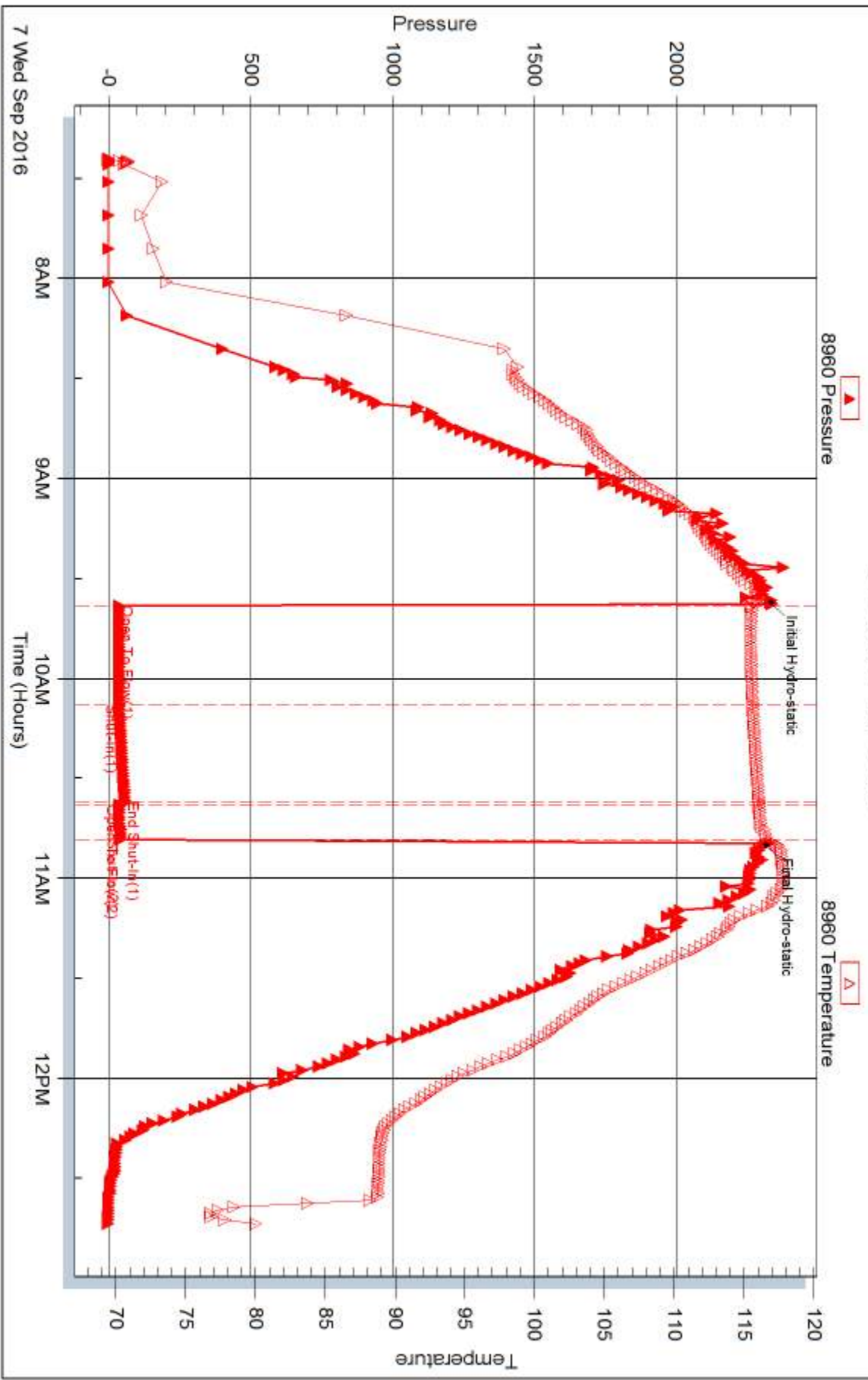
Length ft	Description	Volume bbl
5.00	Mud 100%	0.025

Total Length: 5.00 ft Total Volume: 0.025 bbl
Num Fluid Samples: 0 Num Gas Bombs: 0 Serial #:
Laboratory Name: Laboratory Location:
Recovery Comments:

Pressure vs. Time



Pressure vs. Time





DRILL STEM TEST REPORT

Prepared For: **American Warrior Inc**

PO Box 399
Garden City, KS 67846

ATTN: Jason Alm

Doll Mabel #1-18

18-23s-23w Hodgeman,KS

Start Date: 2016.09.07 @ 19:46:00

End Date: 2016.09.08 @ 01:29:00

Job Ticket #: 65119 DST #: 2

Trilobite Testing, Inc

PO Box 362 Hays, KS 67601

ph: 785-625-4778 fax: 785-625-5620

Printed: 2016.09.08 @ 08:38:00

American Warrior Inc

18-23s-23w Hodgeman,KS

Doll Mabel #1-18

DST # 2

Cherokee Sand

2016.09.07



**TRILOBITE
TESTING, INC**

DRILL STEM TEST REPORT

American Warrior Inc
PO Box 399
Garden City, KS 67846
ATTN: Jason Alm

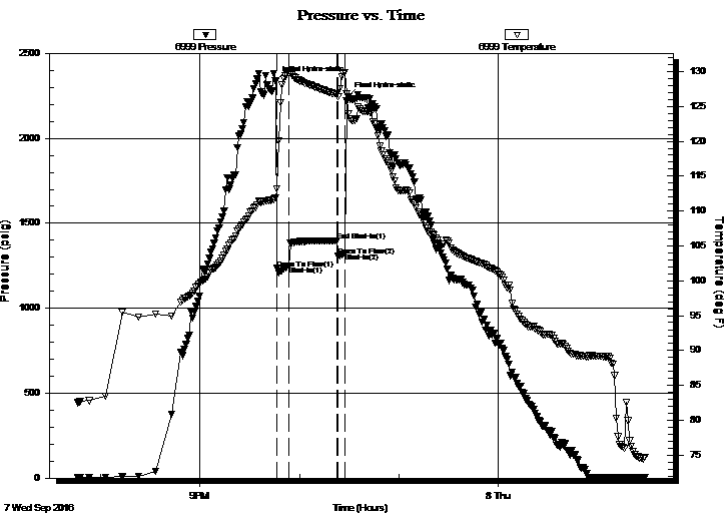
18-23s-23w Hodgeman,KS
Doll Mabel #1-18
Job Ticket: 65119 **DST#: 2**
Test Start: 2016.09.07 @ 19:46:00

GENERAL INFORMATION:

Formation: **Cherokee Sand**
Deviated: No Whipstock: ft (KB)
Time Tool Opened: 21:46:30
Time Test Ended: 01:29:00
Interval: **4686.00 ft (KB) To 4767.00 ft (KB) (TVD)**
Total Depth: 4767.00 ft (KB) (TVD)
Hole Diameter: 7.88 inches Hole Condition: Fair
Test Type: Conventional Bottom Hole (Initial)
Tester: Ken Swinney
Unit No: 72
Reference Elevations: 2433.00 ft (KB)
2425.00 ft (CF)
KB to GR/CF: 8.00 ft

Serial #: 6999 Inside
Press@RunDepth: 1250.32 psig @ 4763.39 ft (KB) Capacity: 8000.00 psig
Start Date: 2016.09.07 End Date: 2016.09.08 Last Calib.: 2016.09.08
Start Time: 19:46:05 End Time: 01:28:59 Time On Btm: 2016.09.07 @ 21:45:30
Time Off Btm: 2016.09.07 @ 22:29:30

TEST COMMENT: IFP 5 Minutes BOB in 30 seconds
ISI 30 Minutes No blow back
FFP 5 Minutes BOB in 30 seconds



PRESSURE SUMMARY

Time (Min.)	Pressure (psig)	Temp (deg F)	Annotation
0	2338.47	111.84	Initial Hydro-static
1	1233.63	113.22	Open To Flow (1)
8	1250.32	129.74	Shut-In(1)
37	1398.53	126.72	End Shut-In(1)
38	1306.46	126.39	Open To Flow (2)
42	1324.66	129.88	Shut-In(2)
44	2243.15	123.91	Final Hydro-static

Recovery

Length (ft)	Description	Volume (bbl)
2418.00	Muddy Water/ Mud 5% Water 95%	33.64

Gas Rates

Choke (inches)	Pressure (psig)	Gas Rate (Mcf/d)



TRILOBITE TESTING, INC

DRILL STEM TEST REPORT

American Warrior Inc
 PO Box 399
 Garden City, KS 67846
 ATTN: Jason Alm

18-23s-23w Hodgeman, KS
Doll Mabel #1-18
 Job Ticket: 65119 **DST#: 2**
 Test Start: 2016.09.07 @ 19:46:00

GENERAL INFORMATION:

Formation: **Cherokee Sand**
 Deviated: No Whipstock: ft (KB)
 Time Tool Opened: 21:46:30
 Time Test Ended: 01:29:00
 Interval: **4686.00 ft (KB) To 4767.00 ft (KB) (TVD)**
 Total Depth: 4767.00 ft (KB) (TVD)
 Hole Diameter: 7.88 inches Hole Condition: Fair
 Test Type: Conventional Bottom Hole (Initial)
 Tester: Ken Swinney
 Unit No: 72
 Reference Elevations: 2433.00 ft (KB)
 2425.00 ft (CF)
 KB to GR/CF: 8.00 ft

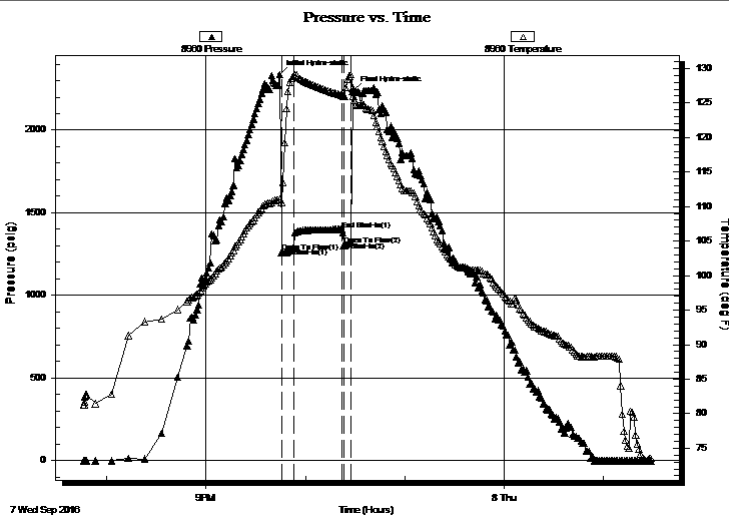
Serial #: 8960

Outside

Press@RunDepth: 1398.64 psig @ 4764.39 ft (KB) Capacity: 8000.00 psig
 Start Date: 2016.09.07 End Date: 2016.09.08 Last Calib.: 2016.09.08
 Start Time: 19:46:05 End Time: 01:28:29 Time On Btm: 2016.09.07 @ 21:44:30
 Time Off Btm: 2016.09.07 @ 22:29:00

TEST COMMENT: IFP 5 Minutes BOB in 30 seconds
 ISI 30 Minutes No blow back
 FFP 5 Minutes BOB in 30 seconds

PRESSURE SUMMARY



Time (Min.)	Pressure (psig)	Temp (deg F)	Annotation
0	2337.66	111.05	Initial Hydro-static
1	1260.60	110.61	Open To Flow (1)
9	1287.32	128.91	Shut-In(1)
38	1398.64	126.08	End Shut-In(1)
39	1302.55	125.88	Open To Flow (2)
43	1323.27	129.13	Shut-In(2)
45	2239.44	126.01	Final Hydro-static

Recovery

Length (ft)	Description	Volume (bbl)
2418.00	Muddy Water/ Mud 5% Water 95%	33.64

Gas Rates

	Choke (inches)	Pressure (psig)	Gas Rate (Mcf/d)



**TRILOBITE
TESTING, INC**

DRILL STEM TEST REPORT

TOOL DIAGRAM

American Warrior Inc
PO Box 399
Garden City, KS 67846
ATTN: Jason Alm

18-23s-23w Hodgeman,KS
Doll Mabel #1-18
Job Ticket: 65119 **DST#: 2**
Test Start: 2016.09.07 @ 19:46:00

Tool Information

Drill Pipe:	Length: 4658.00 ft	Diameter: 3.80 inches	Volume: 65.34 bbl	Tool Weight:	2000.00 lb
Heavy Wt. Pipe:	Length: 0.00 ft	Diameter: 0.00 inches	Volume: 0.00 bbl	Weight set on Packer:	20000.00 lb
Drill Collar:	Length: 30.00 ft	Diameter: 2.25 inches	Volume: 0.15 bbl	Weight to Pull Loose:	96000.00 lb
			<u>Total Volume: 65.49 bbl</u>	Tool Chased	0.00 ft
Drill Pipe Above KB:	30.00 ft			String Weight: Initial	72000.00 lb
Depth to Top Packer:	4686.00 ft			Final	84000.00 lb
Depth to Bottom Packer:	ft				
Interval between Packers:	81.39 ft				
Tool Length:	109.39 ft				
Number of Packers:	2	Diameter: 6.75 inches			

Tool Comments:

Tool Description	Length (ft)	Serial No.	Position	Depth (ft)	Accum. Lengths
-------------------------	--------------------	-------------------	-----------------	-------------------	-----------------------

Shut-In Tool	5.00			4663.00	
Hydraulic tool	5.00			4668.00	
Jars	6.00			4674.00	
Safety Joint	2.00			4676.00	
Top Packer	5.00			4681.00	
Packer	5.00			4686.00	28.00 Bottom Of Top Packer
Anchor	11.00			4697.00	
Change Over Sub	1.00			4698.00	
Drill Pipe	63.39			4761.39	
Change Over Sub	1.00			4762.39	
Recorder	1.00	6999	Inside	4763.39	
Recorder	1.00	8960	Outside	4764.39	
Bullnose	3.00			4767.39	81.39 Anchor Tool

Total Tool Length: 109.39



**TRILOBITE
TESTING, INC**

DRILL STEM TEST REPORT

FLUID SUMMARY

American Warrior Inc
PO Box 399
Garden City, KS 67846
ATTN: Jason Alm

18-23s-23w Hodgeman,KS
Doll Mabel #1-18
Job Ticket: 65119 **DST#: 2**
Test Start: 2016.09.07 @ 19:46:00

Mud and Cushion Information

Mud Type: Gel Chem	Cushion Type:	Oil API:	deg API
Mud Weight: 9.00 lb/gal	Cushion Length: ft	Water Salinity:	28000 ppm
Viscosity: 59.00 sec/qt	Cushion Volume: bbl		
Water Loss: 7.18 in ³	Gas Cushion Type:		
Resistivity: ohm.m	Gas Cushion Pressure: psig		
Salinity: 4200.00 ppm			
Filter Cake: 1.00 inches			

Recovery Information

Recovery Table

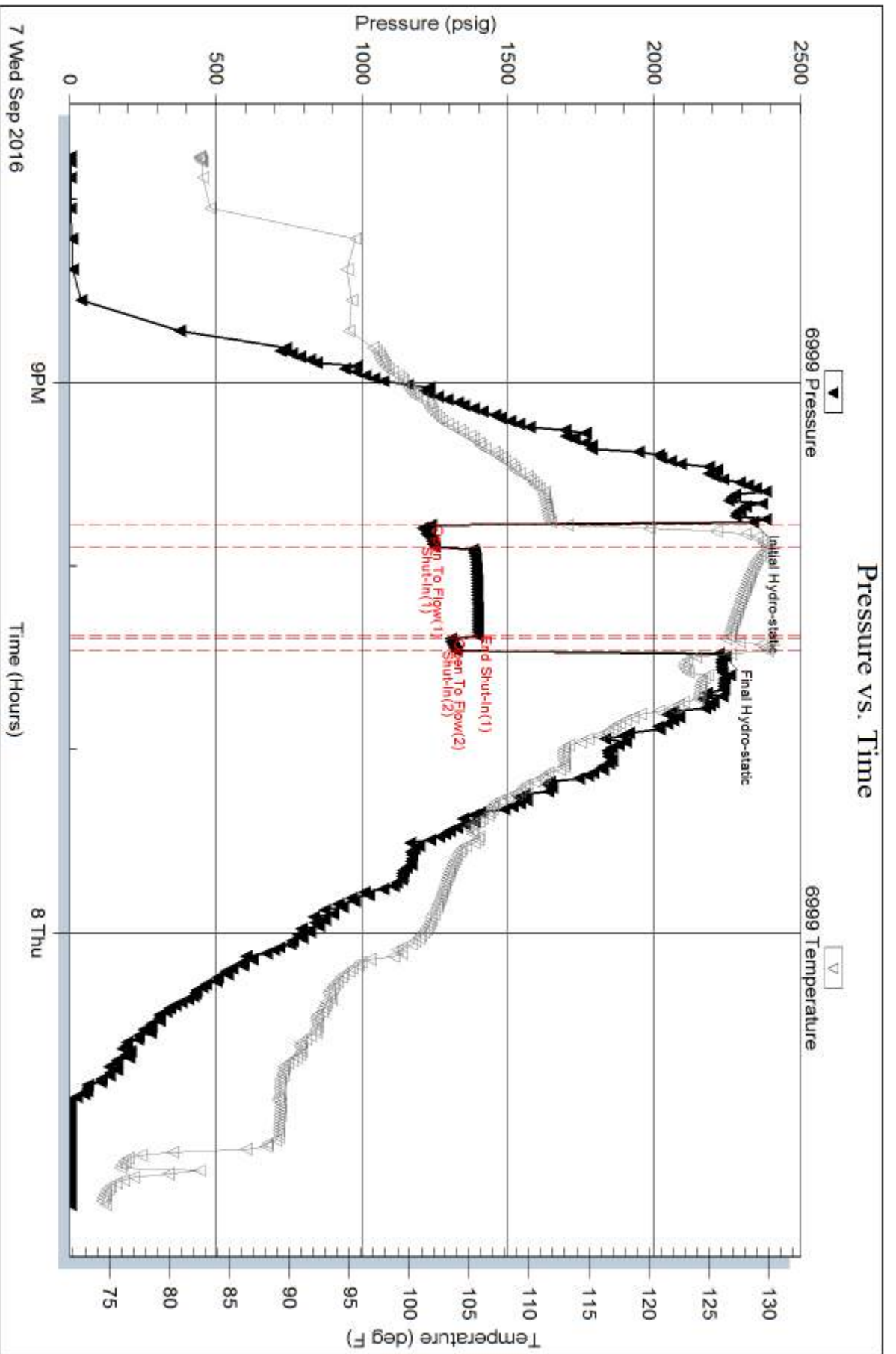
Length ft	Description	Volume bbl
2418.00	Muddy Water/ Mud 5% Water 95%	33.645

Total Length: 2418.00 ft Total Volume: 33.645 bbl

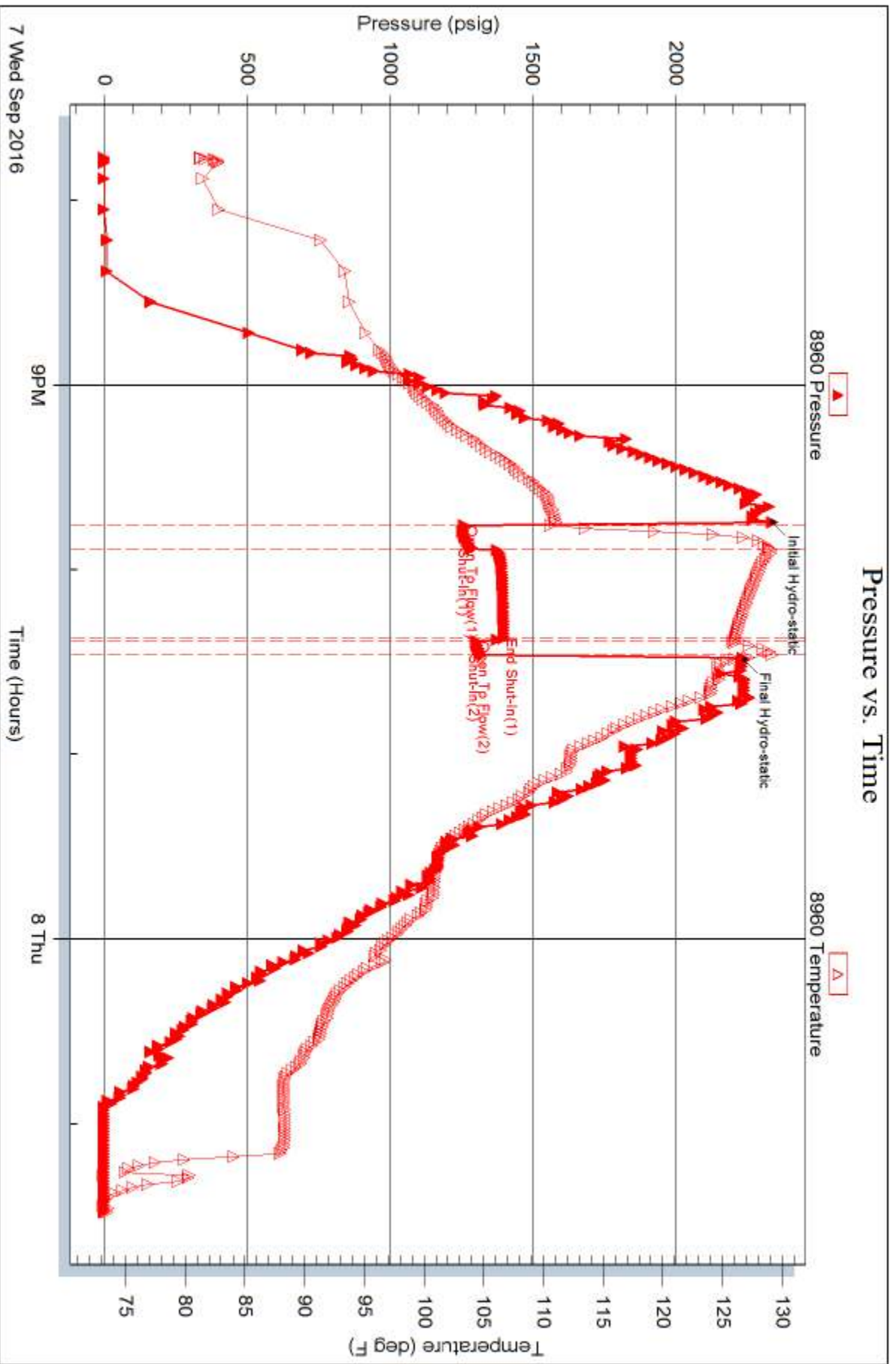
Num Fluid Samples: 0 Num Gas Bombs: 0 Serial #:

Laboratory Name: Laboratory Location:

Recovery Comments: Recovery Resistivity .22 ohms @ 75 degrees



Pressure vs. Time





TRILOBITE TESTING INC.

1515 Commerce Parkway • Hays, Kansas 67601

Test Ticket

NO. **65118**

Well Name & No. Doll-Mabel #1-18 Test No. 1 Date 7 Sept 16
 Company American Warrior Incorporated Elevation 2433 KB 2425 GL
 Address 3118 Cummings Road PO Box 399 Garden City, KS 67846
 Co. Rep / Geo. Jason Alm Rig Discovery Rig 3
 Location: Sec. 18 Twp. 23S Rge. 23W Co. Hodgeman State KS

Interval Tested 4685-4746 Zone Tested Cherokee Sand
 Anchor Length 61 Drill Pipe Run 4658 Mud Wt. 9.2
 Top Packer Depth 4680 Drill Collars Run 30 Vis 48
 Bottom Packer Depth 4685 Wt. Pipe Run — WL 8.8
 Total Depth 4746 Chlorides 4600 ppm System LCM 1#

Blow Description I.F. Surface blow did not build / Died in 14 minutes
I.S.T no blow back
F.E. Dead / Flush tool no help / Pull test

Rec	Feet of	%gas	%oil	%water	%mud
<u>5</u>	<u>Mud</u>				<u>100%</u>
Rec	Feet of	%gas	%oil	%water	%mud
Rec	Feet of	%gas	%oil	%water	%mud
Rec	Feet of	%gas	%oil	%water	%mud
Rec	Feet of	%gas	%oil	%water	%mud

Rec Total 5 BHT 118 Gravity _____ API RW _____ @ _____ °F Chlorides _____ ppm

(A) Initial Hydrostatic 2336 Test 1150 T-On Location 6:43 am
 (B) First Initial Flow 42 Jars 250 T-Started 7:24 am
 (C) First Final Flow 43 Safety Joint 75 T-Open 9:37 am
 (D) Initial Shut-In 56 Circ Sub _____ T-Pulled 10:47 am
 (E) Second Initial Flow 44 Hourly Standby _____ T-Out 12:47 pm
 (F) Second Final Flow 46 Mileage 138 103.50 Comments _____
 (G) Final Shut-In _____ Sampler _____
 (H) Final Hydrostatic 2319 Straddle _____
 Ruined Shale Packer _____
 Ruined Packer _____
 Extra Copies _____

Initial Open 30 Shale Packer _____
 Initial Shut-In 30 Extra Packer _____
 Final Flow 10 Extra Recorder _____ Sub Total 0
 Final Shut-In _____ Day Standby _____ Total 1578.50
 Accessibility _____ MP/DST Disc't _____
 Sub Total 1578.50

Approved By _____ Our Representative [Signature]

TriLOBITE Testing Inc. shall not be liable for damaged of any kind of the property or personnel of the one for whom a test is made, or for any loss suffered or sustained, directly or indirectly, through the use of its equipment, or its statements or opinion concerning the results of any test, tools lost or damaged in the hole shall be paid for at cost by the party for whom the test is made.



TRILOBITE TESTING INC.

1515 Commerce Parkway • Hays, Kansas 67601

Test Ticket

NO. **65119**

Well Name & No. Doll-Mabel #1-18 Test No. 2 Date 7 Sept 16
 Company American Warrior Incorporated Elevation 2433 KB 2425 GL
 Address 3118 Cummings Road PO Box 399 Garden City Kansas 67846
 Co. Rep / Geo. Jason Alm Rig Discovery Rig 3
 Location: Sec. 18 Twp. 23 S Rge. 23 W Co. Hodgeman State KS

Interval Tested 4686-4767 Zone Tested Cherokee Sand
 Anchor Length 81 Drill Pipe Run 4658 Mud Wt. 9.35
 Top Packer Depth 4681 Drill Collars Run 30 Vis 59
 Bottom Packer Depth 4686 Wt. Pipe Run — WL 7.2
 Total Depth 4767 Chlorides 4200 ppm System LCM L#

Blow Description I.F. 30 seconds bottom of bucket
I.S.I. No blow back
F.F. 30 seconds bottom of bucket
Pulled tool open / no final shut-in

Rec	Feet of	%gas	%oil	%water	%mud
<u>2418</u>	<u>Muddy Water</u>			<u>95</u>	<u>5</u>
Rec	Feet of	%gas	%oil	%water	%mud
Rec	Feet of	%gas	%oil	%water	%mud
Rec	Feet of	%gas	%oil	%water	%mud
Rec	Feet of	%gas	%oil	%water	%mud

Rec Total 2418 BHT 129 Gravity _____ API RW .22 @ 75 °F Chlorides 28,000 ppm

(A) Initial Hydrostatic 2338 Test 1150 T-On Location 7:13 pm
 (B) First Initial Flow 1233 Jars 250 T-Started 7:46 pm
 (C) First Final Flow 1250 Safety Joint 75 T-Open 9:45 pm
 (D) Initial Shut-In 1398 Circ Sub _____ T-Pulled 10:25 pm
 (E) Second Initial Flow 1306 Hourly Standby _____ T-Out 1:29 am
 (F) Second Final Flow 1324 Mileage 138 103.50 Comments _____
 (G) Final Shut-In _____ Sampler _____
 (H) Final Hydrostatic 2243 Straddle _____ Ruined Shale Packer _____
 Shale Packer _____ Ruined Packer _____

Initial Open 5 Extra Packer _____ Extra Copies _____
 Initial Shut-In 30 Extra Recorder _____ Sub Total 0
 Final Flow 5 Day Standby _____ Total 1578.50
 Final Shut-In _____ Accessibility _____ MP/DST Disc't _____
 Sub Total 1578.50

Approved By _____ Our Representative [Signature]

Trilobite Testing Inc. shall not be liable for damaged of any kind of the property or personnel of the one for whom a test is made, or for any loss suffered or sustained, directly or indirectly, through the use of its equipment, or its statements or opinion concerning the results of any test, tools lost or damaged in the hole shall be paid for at cost by the party for whom the test is made.