



TRILOBITE TESTING, INC

DRILL STEM TEST REPORT

Ritchie Exploration Inc
 8100 E 22d St n 700
 Wichita, Ks 67278
 ATTN: John Goldsmith

32-19s-30w Lane, Ks
Anderson 32B #1
 Job Ticket: 65502 **DST#: 5**
 Test Start: 2016.08.11 @ 05:20:19

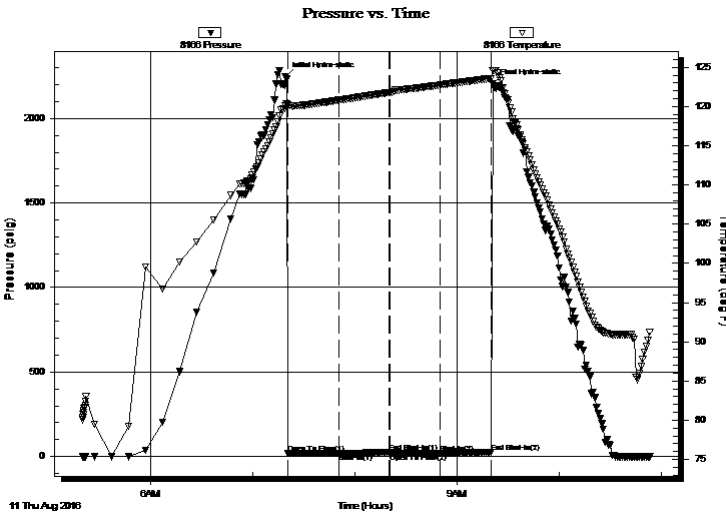
GENERAL INFORMATION:

Formation: **Cherokee**
 Deviated: No Whipstock: ft (KB)
 Test Type: Conventional Bottom Hole (Reset)
 Time Tool Opened: 07:20:49 Tester: Brandon Turley
 Time Test Ended: 10:53:19 Unit No: 79
 Interval: **4547.00 ft (KB) To 4606.00 ft (KB) (TVD)** Reference Elevations: 2934.00 ft (KB)
 Total Depth: 4606.00 ft (KB) (TVD) 2929.00 ft (CF)
 Hole Diameter: 7.88 inches Hole Condition: Good KB to GR/CF: 5.00 ft

Serial #: 8166 Outside
 Press@RunDepth: 19.84 psig @ 4548.00 ft (KB) Capacity: 8000.00 psig
 Start Date: 2016.08.11 End Date: 2016.08.11 Last Calib.: 2016.08.11
 Start Time: 05:20:24 End Time: 10:53:18 Time On Btm: 2016.08.11 @ 07:19:19
 Time Off Btm: 2016.08.11 @ 09:20:49

TEST COMMENT: IF: 1/4 blow built to 1 in 30 min.
 IS: No return.
 FF: No blow. Flushed tool no blow.
 FS: No return.

PRESSURE SUMMARY



Time (Min.)	Pressure (psig)	Temp (deg F)	Annotation
0	2246.39	120.15	Initial Hydro-static
2	17.00	120.19	Open To Flow (1)
31	17.22	120.80	Shut-In(1)
61	23.56	121.78	End Shut-In(1)
61	16.84	121.80	Open To Flow (2)
91	19.84	122.74	Shut-In(2)
121	23.12	123.60	End Shut-In(2)
122	2204.90	124.61	Final Hydro-static

Recovery

Length (ft)	Description	Volume (bbl)
5.00	mud 100% m	0.02

* Recovery from multiple tests

Gas Rates

Choke (inches)	Pressure (psig)	Gas Rate (Mcf/d)



**TRILOBITE
TESTING, INC**

DRILL STEM TEST REPORT

FLUID SUMMARY

Ritchie Exploration Inc

32-19s-30w Lane, Ks

8100 E 22d St n 700
Wichita, Ks 67278

Anderson 32B #1

Job Ticket: 65502

DST#: 5

ATTN: John Goldsmith

Test Start: 2016.08.11 @ 05:20:19

Mud and Cushion Information

Mud Type: Gel Chem

Cushion Type:

Oil API:

0 deg API

Mud Weight: 9.00 lb/gal

Cushion Length:

ft

Water Salinity:

0 ppm

Viscosity: 55.00 sec/qt

Cushion Volume:

bbf

Water Loss: 8.79 in³

Gas Cushion Type:

Resistivity: 0.00 ohm.m

Gas Cushion Pressure:

psig

Salinity: 4400.00 ppm

Filter Cake: 1.00 inches

Recovery Information

Recovery Table

Length ft	Description	Volume bbf
5.00	mud 100%m	0.025

Total Length: 5.00 ft Total Volume: 0.025 bbf

Num Fluid Samples: 0

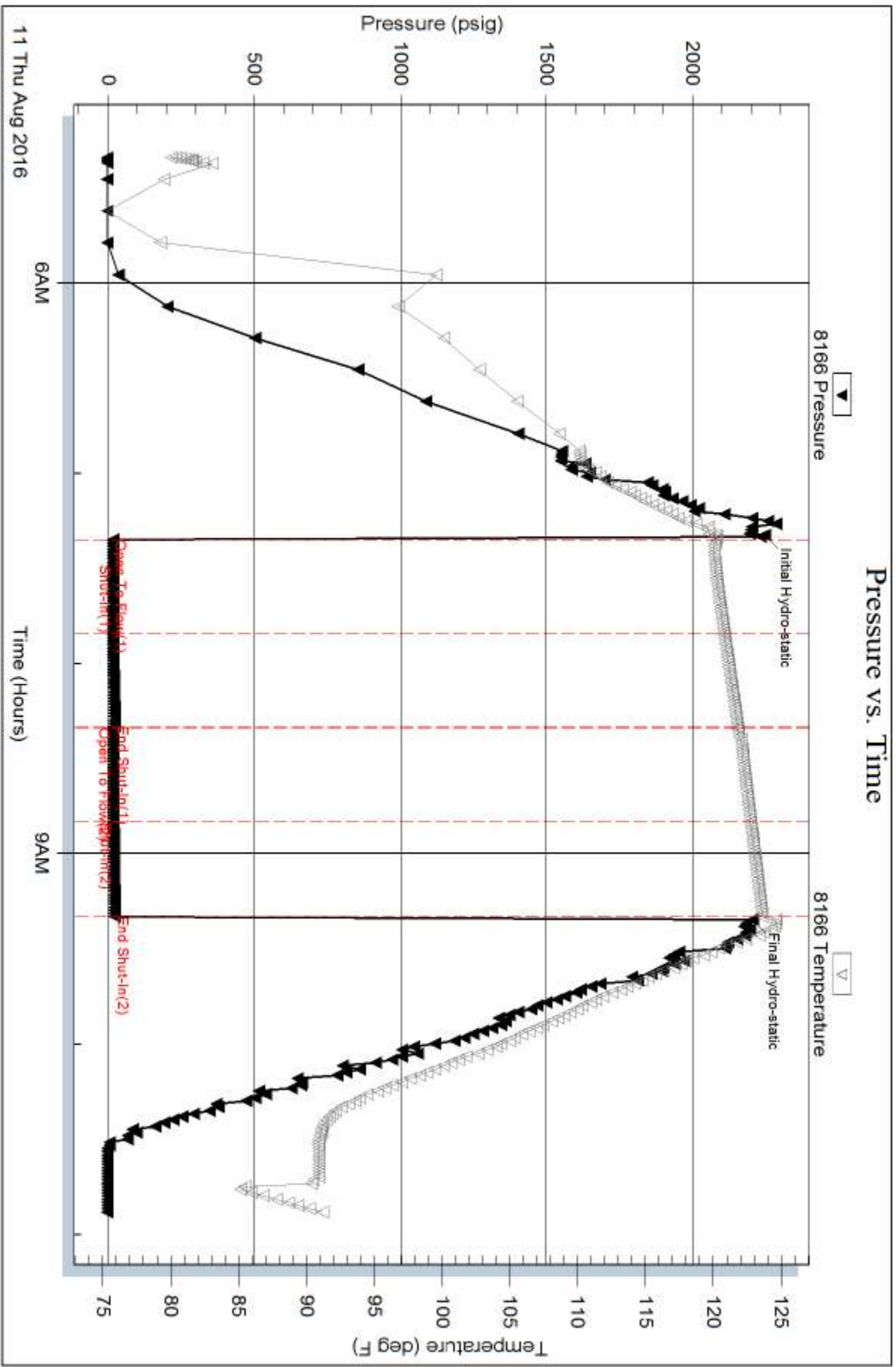
Num Gas Bombs: 0

Serial #:

Laboratory Name:

Laboratory Location:

Recovery Comments:



Serial #: 8875

Inside

Richie Exploration Inc

Anderson 32B #1

DST Test Number: 5

