



**TRILOBITE TESTING, INC**

# DRILL STEM TEST REPORT

Becker Oil Corporation  
 PO Box 1150  
 Ponca City OK 74601  
 ATTN: Clyde Becker

**25-32S-23W Clark**

**Harrington 1**

Job Ticket: 55405

**DST#: 4**

Test Start: 2016.08.05 @ 08:48:21

## GENERAL INFORMATION:

Formation: **Marmaton**

Deviated: No Whipstock: ft (KB)

Time Tool Opened: 11:03:06

Time Test Ended: 17:34:21

Test Type: Conventional Straddle (Reset)

Tester: Leal Cason

Unit No: 74

**Interval: 5042.00 ft (KB) To 5075.00 ft (KB) (TVD)**

Reference Elevations: 2073.00 ft (KB)

Total Depth: 5120.00 ft (KB) (TVD)

2062.00 ft (CF)

Hole Diameter: 7.88 inches Hole Condition: Good

KB to GR/CF: 11.00 ft

**Serial #: 8525 Inside**

Press@RunDepth: 27.40 psig @ 5043.00 ft (KB)

Capacity: 8000.00 psig

Start Date: 2016.08.05 End Date: 2016.08.05

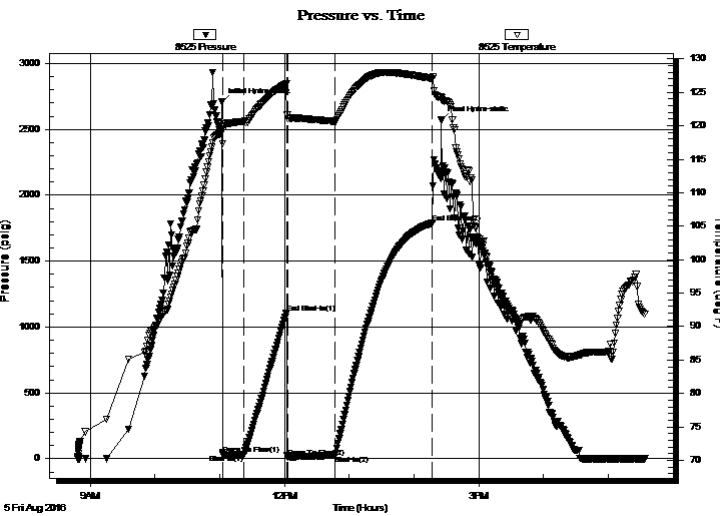
Last Calib.: 2016.08.05

Start Time: 08:48:22 End Time: 17:34:21

Time On Btm: 2016.08.05 @ 11:01:36

Time Off Btm: 2016.08.05 @ 14:25:21

**TEST COMMENT:** IF: Strong Blow , BOBin 5 minutes  
 IS: No Blow Back  
 FF: Strong Blow , BOB immediate, GTS in 5 minutes, TSTM  
 FS: No Blow Back



## PRESSURE SUMMARY

Time (Min.)	Pressure (psig)	Temp (deg F)	Annotation
0	2706.20	118.96	Initial Hydro-static
2	32.26	119.40	Open To Flow (1)
21	31.98	120.66	Shut-In(1)
61	1108.60	126.26	End Shut-In(1)
62	14.09	121.06	Open To Flow (2)
106	27.40	120.66	Shut-In(2)
196	1789.16	127.06	End Shut-In(2)
204	2568.90	124.17	Final Hydro-static

## Recovery

Length (ft)	Description	Volume (bbl)
0.00	5018 GIP	0.00
20.00	GSY VSOSM 2%G -1&O +97%M	0.10

\* Recovery from multiple tests

## Gas Rates

	Choke (inches)	Pressure (psig)	Gas Rate (Mcf/d)



**TRILOBITE  
TESTING, INC**

# DRILL STEM TEST REPORT

Becker Oil Corporation

**25-32S-23W Clark**

PO Box 1150  
Ponca City OK 74601

**Harrington 1**

Job Ticket: 55405

**DST#: 4**

ATTN: Clyde Becker

Test Start: 2016.08.05 @ 08:48:21

## GENERAL INFORMATION:

Formation: **Marmaton**

Deviated: No Whipstock: ft (KB)

Time Tool Opened: 11:03:06

Time Test Ended: 17:34:21

Test Type: Conventional Straddle (Reset)

Tester: Leal Cason

Unit No: 74

**Interval: 5042.00 ft (KB) To 5075.00 ft (KB) (TVD)**

Reference Elevations: 2073.00 ft (KB)

Total Depth: 5120.00 ft (KB) (TVD)

2062.00 ft (CF)

Hole Diameter: 7.88 inches Hole Condition: Good

KB to GR/CF: 11.00 ft

**Serial #: 6806 Outside**

Press@RunDepth: psig @ 5043.00 ft (KB)

Capacity: 8000.00 psig

Start Date: 2016.08.05 End Date: 2016.08.05

Last Calib.: 2016.08.05

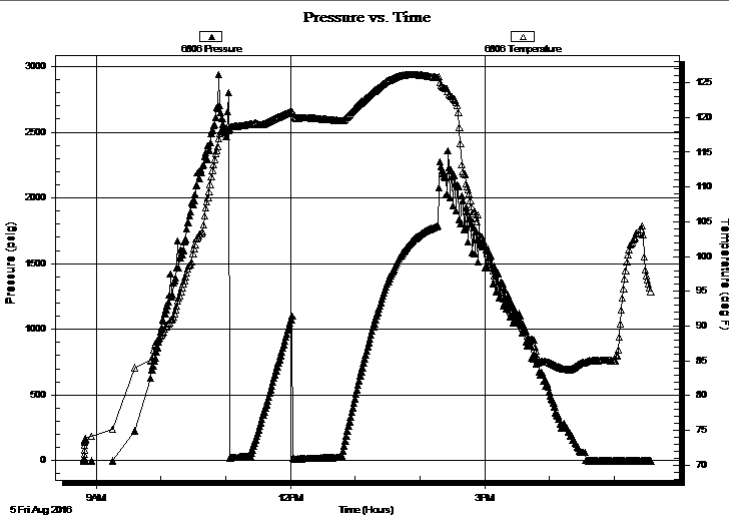
Start Time: 08:48:22 End Time: 17:34:21

Time On Btm:

Time Off Btm:

**TEST COMMENT:** IF: Strong Blow , BOBin 5 minutes  
IS: No Blow Back  
FF: Strong Blow , BOB immediate, GTS in 5 minutes, TSTM  
FS: No Blow Back

## PRESSURE SUMMARY



Time (Min.)	Pressure (psig)	Temp (deg F)	Annotation

## Recovery

Length (ft)	Description	Volume (bbl)
0.00	5018 GIP	0.00
20.00	GSY VSOSM 2%G -1&O +97%M	0.10

\* Recovery from multiple tests

## Gas Rates

Choke (inches)	Pressure (psig)	Gas Rate (Mcf/d)



TRILOBITE  
TESTING, INC

# DRILL STEM TEST REPORT

Becker Oil Corporation

**25-32S-23W Clark**

PO Box 1150  
Ponca City OK 74601

**Harrington 1**

ATTN: Clyde Becker

Job Ticket: 55405

**DST#: 4**

Test Start: 2016.08.05 @ 08:48:21

## GENERAL INFORMATION:

Formation: **Marmaton**

Deviated: No Whipstock: ft (KB)

Time Tool Opened: 11:03:06

Time Test Ended: 17:34:21

Test Type: Conventional Straddle (Reset)

Tester: Leal Cason

Unit No: 74

Interval: **5042.00 ft (KB) To 5075.00 ft (KB) (TVD)**

Total Depth: 5120.00 ft (KB) (TVD)

Hole Diameter: 7.88 inches Hole Condition: Good

Reference Elevations: 2073.00 ft (KB)

2062.00 ft (CF)

KB to GR/CF: 11.00 ft

**Serial #: 8358 Below (Straddle)**

Press@RunDepth: psig @ 5080.00 ft (KB)

Start Date: 2016.08.05

End Date:

2016.08.05

Start Time: 08:48:22

End Time:

17:34:06

Capacity: 8000.00 psig

Last Calib.:

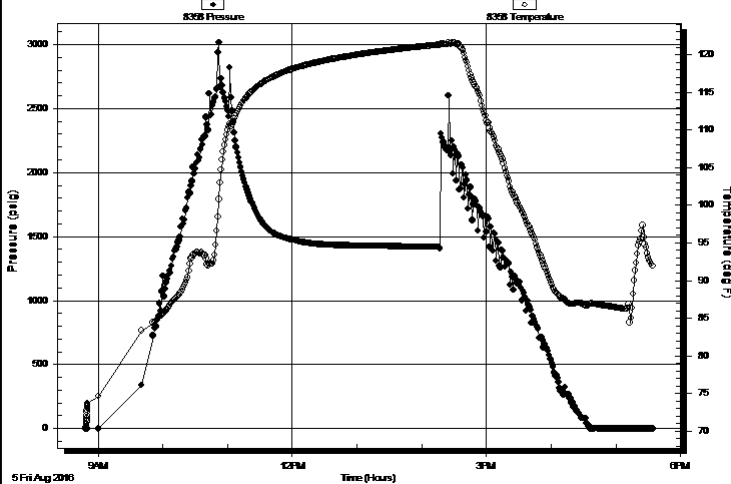
2016.08.05

Time On Btm:

Time Off Btm:

TEST COMMENT: IF: Strong Blow , BOBin 5 minutes  
IS: No Blow Back  
FF: Strong Blow , BOB immediate, GTS in 5 minutes, TSTM  
FS: No Blow Back

Pressure vs. Time



PRESSURE SUMMARY

Time (Min.)	Pressure (psig)	Temp (deg F)	Annotation

Recovery

Length (ft)	Description	Volume (bbl)
0.00	5018 GIP	0.00
20.00	GSY VSOSM 2%G -1&O +97%M	0.10

Gas Rates

Choke (inches)	Pressure (psig)	Gas Rate (Mcf/d)

\* Recovery from multiple tests



**TRILOBITE  
TESTING, INC**

# DRILL STEM TEST REPORT

**FLUID SUMMARY**

Becker Oil Corporation

**25-32S-23W Clark**

PO Box 1150  
Ponca City OK 74601

**Harrington 1**

Job Ticket: 55405

**DST#: 4**

ATTN: Clyde Becker

Test Start: 2016.08.05 @ 08:48:21

## Mud and Cushion Information

Mud Type: Gel Chem

Cushion Type:

Oil API:

deg API

Mud Weight: 9.00 lb/gal

Cushion Length:

ft

Water Salinity:

ppm

Viscosity: 54.00 sec/qt

Cushion Volume:

bbbl

Water Loss: 11.58 in<sup>3</sup>

Gas Cushion Type:

Resistivity: ohm.m

Gas Cushion Pressure:

psig

Salinity: 9800.00 ppm

Filter Cake: 0.02 inches

## Recovery Information

Recovery Table

Length ft	Description	Volume bbbl
0.00	5018 GIP	0.000
20.00	GSY VSOSM 2%G - 1&O +97%M	0.098

Total Length: 20.00 ft      Total Volume: 0.098 bbl

Num Fluid Samples: 0

Num Gas Bombs: 0

Serial #:

Laboratory Name:

Laboratory Location:

Recovery Comments:

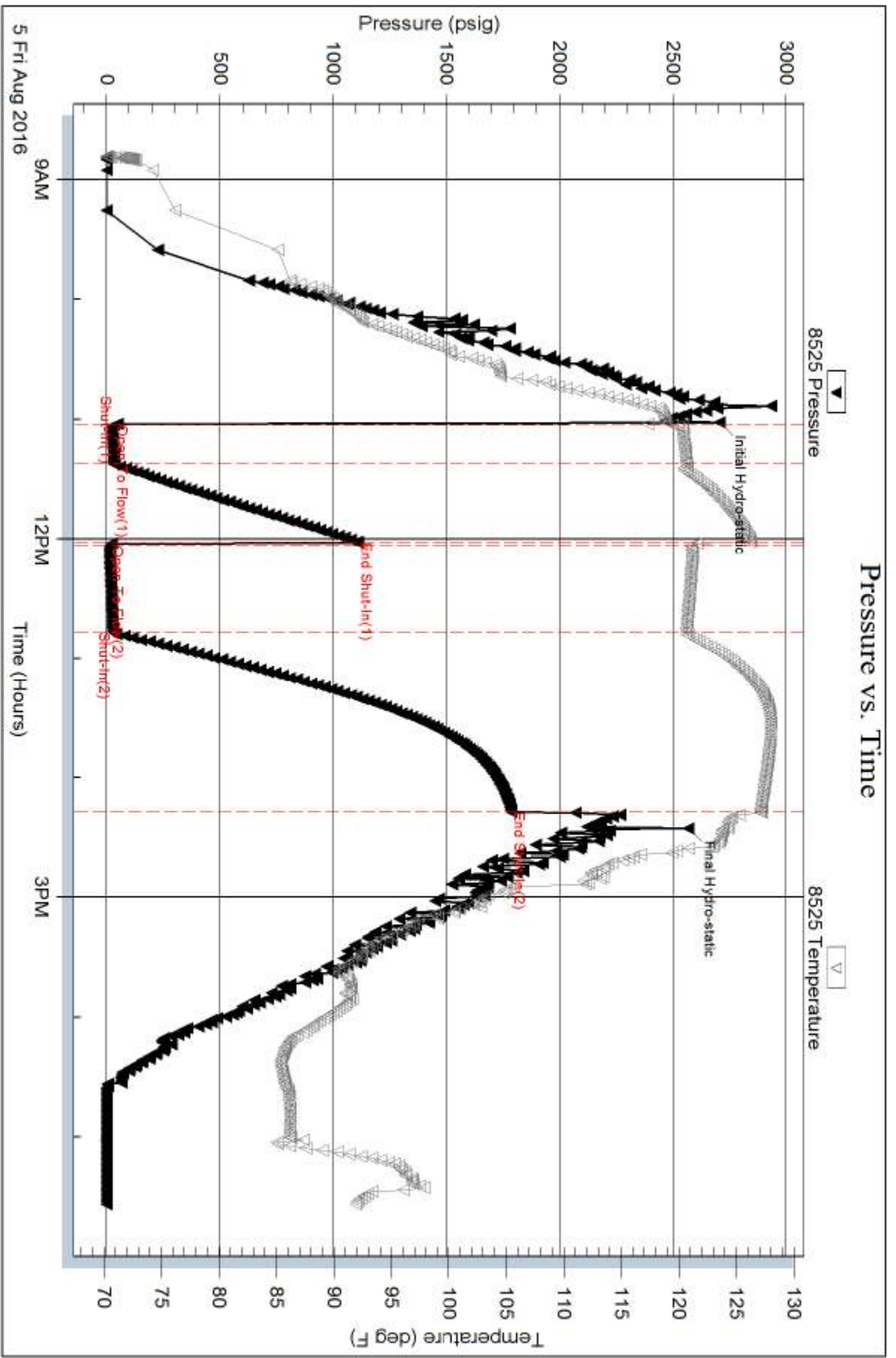
Serial #: 8525

Inside

Becker Oil Corporation

Harrington 1

DST Test Number: 4

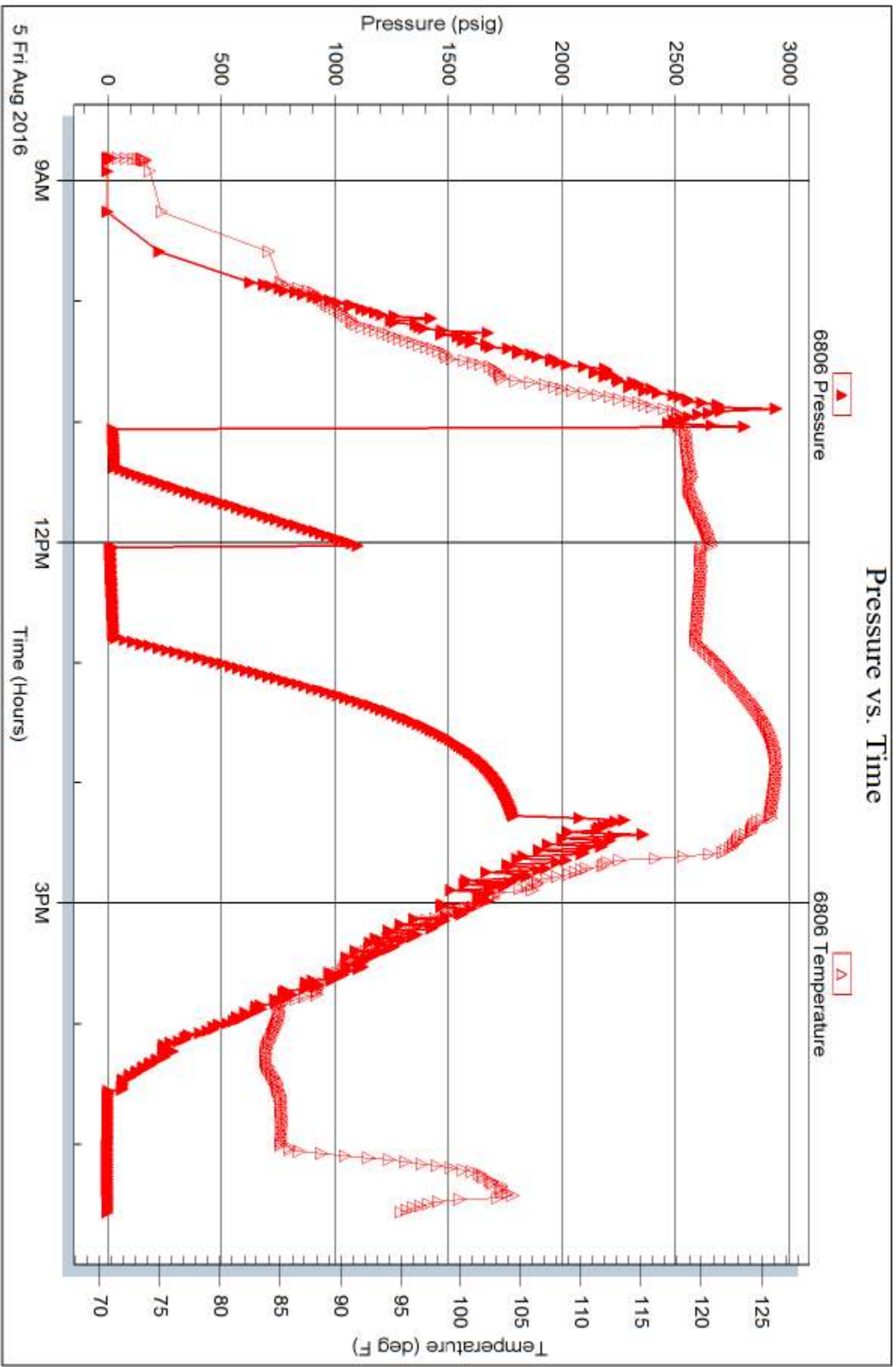


Serial #: 6806

Outside Becker Oil Corporation

Harrington 1

DST Test Number: 4



Trilobite Testing, Inc

Ref. No: 55405

Printed: 2016.08.05 @ 21:16:40

