



**TRILOBITE  
TESTING, INC**

# DRILL STEM TEST REPORT

LaVeta Oil & Gas

**29-22S-11W Stafford**

305 N Buffalo  
Stafford, KS 67578

**P Spangenberg 15**

Job Ticket: 57967

**DST#: 1**

ATTN: Bruce Reed

Test Start: 2016.11.06 @ 22:29:50

## GENERAL INFORMATION:

Formation: **Simpson**

Deviated: No Whipstock: ft (KB)

Time Tool Opened: 00:23:50

Time Test Ended: 04:19:20

Test Type: Conventional Bottom Hole (Initial)

Tester: Leal Cason

Unit No: 74

**Interval: 3526.00 ft (KB) To 3560.00 ft (KB) (TVD)**

Reference Elevations: 1837.00 ft (KB)

Total Depth: 3560.00 ft (KB) (TVD)

1827.00 ft (CF)

Hole Diameter: 7.88 inches Hole Condition: Good

KB to GR/CF: 10.00 ft

**Serial #: 8159**

**Inside**

Press@RunDepth: 16.01 psig @ 3527.00 ft (KB)

Capacity: 8000.00 psig

Start Date: 2016.11.06

End Date:

2016.11.07

Last Calib.:

2016.11.07

Start Time: 22:29:51

End Time:

04:19:20

Time On Btm:

2016.11.07 @ 00:22:20

Time Off Btm:

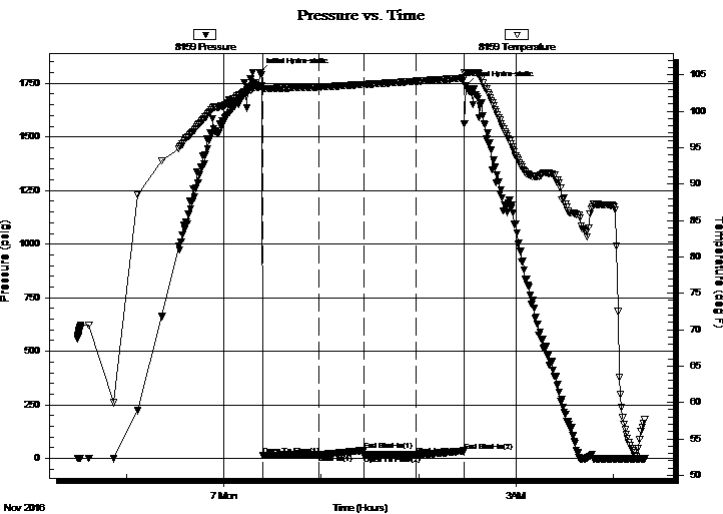
2016.11.07 @ 02:29:05

TEST COMMENT: IF: Weak 1/2 inch Blow

IS: No Blow Back

FF: No Blow

FS: No Blow Back



## PRESSURE SUMMARY

Time (Min.)	Pressure (psig)	Temp (deg F)	Annotation
0	1801.20	103.38	Initial Hydro-static
2	15.01	102.94	Open To Flow (1)
37	17.95	103.31	Shut-In(1)
64	38.05	103.66	End Shut-In(1)
65	15.97	103.66	Open To Flow (2)
96	16.01	104.11	Shut-In(2)
126	35.42	104.54	End Shut-In(2)
127	1740.54	105.28	Final Hydro-static

## Recovery

Length (ft)	Description	Volume (bbl)
5.00	Mud	0.07

## Gas Rates

Choke (inches)	Pressure (psig)	Gas Rate (Mcf/d)



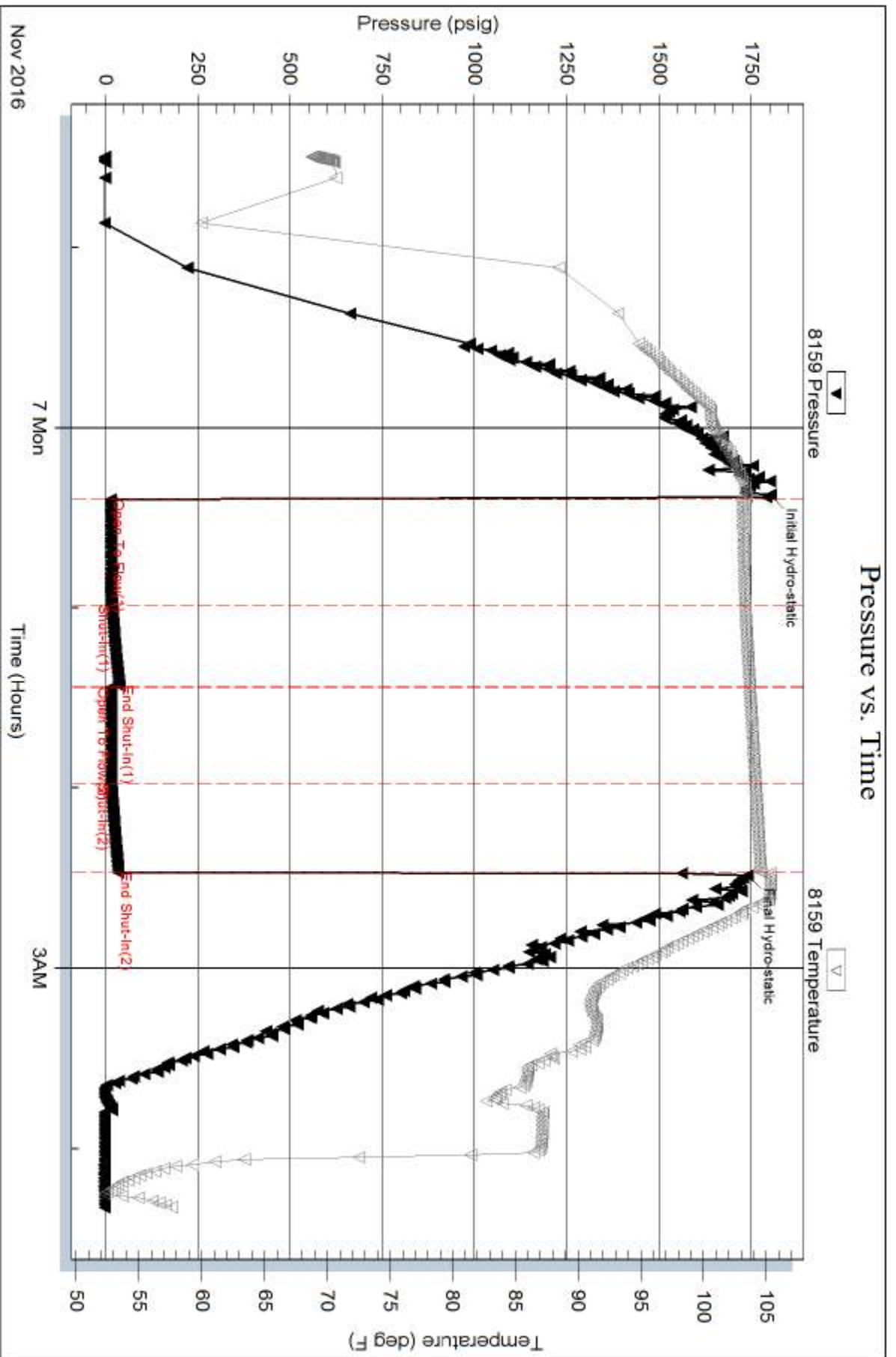
Serial #: 8159

Inside

LaVeta Oil & Gas

P Spangenberg 15

DST Test Number: 1



Tribble Testing, Inc

Ref. No: 57967

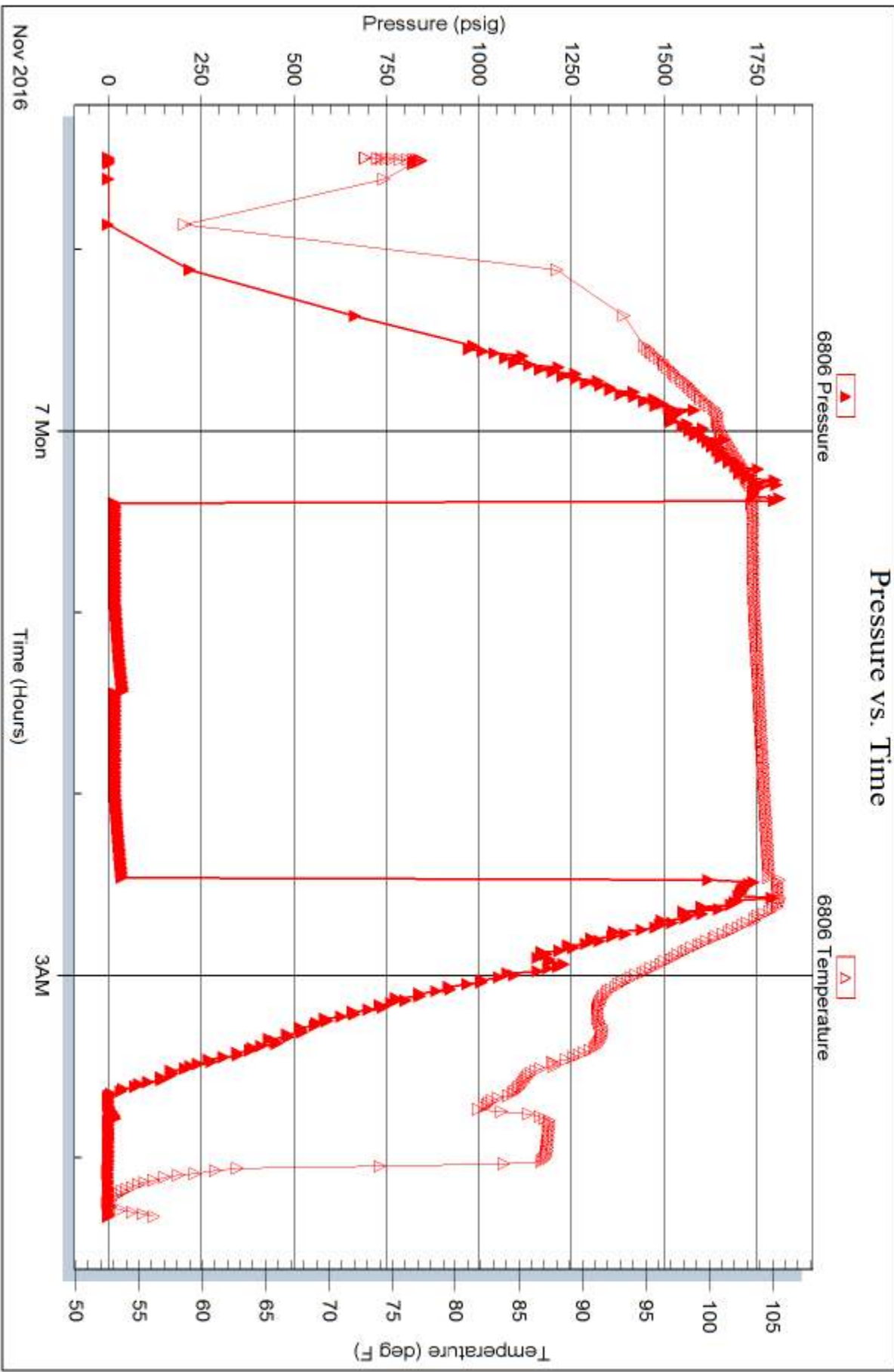
Printed: 2016.11.07 @ 07:14:08

Serial #: 6806

Outside Laveta Oil & Gas

P Spangenberg 15

DST Test Number: 1



Trilobite Testing, Inc

Ref. No: 57967

Printed: 2016.11.07 @ 07:14:09