



**TRILOBITE
TESTING, INC.**

DRILL STEM TEST REPORT

Prepared For: **C G Oil Inc**

PO Box 207
Victoria KS 67601

ATTN: Ron Schmidtberger

Walker Lease #1

34-13s-18w Ellis,KS

Start Date: 2016.08.31 @ 20:10:57

End Date: 2016.08.31 @ 23:41:22

Job Ticket #: 63070 DST #: 3

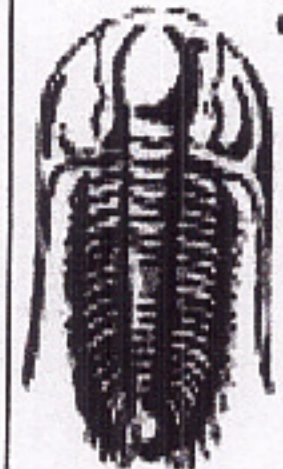
Trilobite Testing, Inc

PO Box 362 Hays, KS 67601

ph: 785-625-4778 fax: 785-625-5620

Printed: 2016.09.01 @ 08:54:30

C G Oil Inc
34-13s-18w Ellis,KS
Walker Lease #1
DST # 3
Congl Sd
2016.08.31



TRILOBITE TESTING, INC

DRILL STEM TEST REPORT

C G Oil Inc
 PO Box 207
 Victoria KS 67601
 ATTN: Ron Schmidtberger

34-13s-18w Ellis,KS
Walker Lease #1
 Job Ticket: 63070 **DST#: 3**
 Test Start: 2016.08.31 @ 20:10:57

GENERAL INFORMATION:

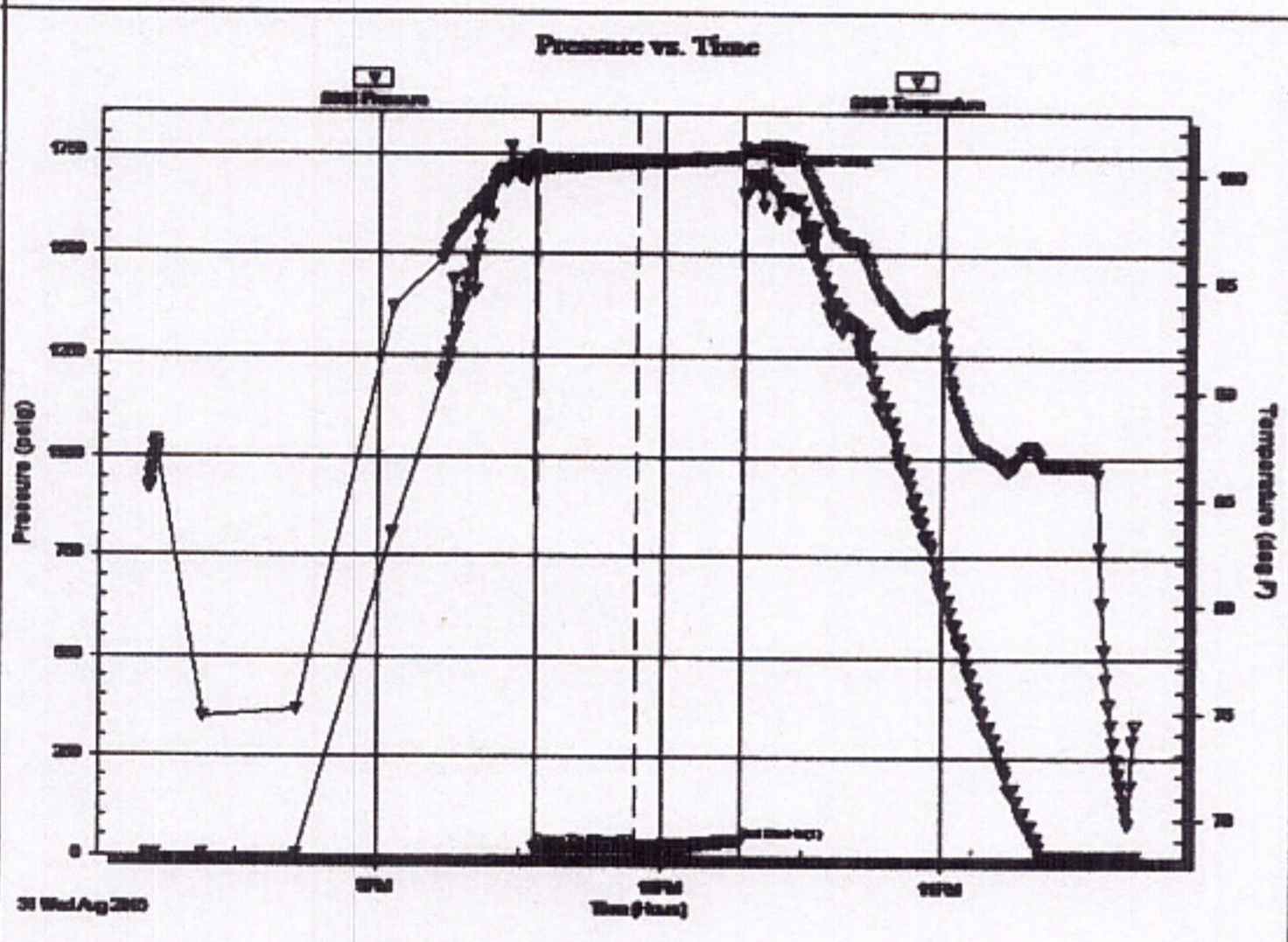
Formation: **Congl Sd**
 Deviated: No Whipstock: ft (KB)
 Time Tool Opened: 21:33:22
 Time Test Ended: 23:41:22
 Interval: **3428.00 ft (KB) To 3470.00 ft (KB) (TVD)**
 Total Depth: 3470.00 ft (KB) (TVD)
 Hole Diameter: 7.88 inches Hole Condition: Fair
 Test Type: Conventional Bottom Hole (Reset)
 Tester: Ray Schwager
 Unit No: 77
 Reference Elevations: 1960.00 ft (KB)
 1952.00 ft (CF)
 KB to GR/CF: 8.00 ft

Serial #: 8018

Inside

Press@RunDepth: 22.51 psig @ 3434.00 ft (KB) Capacity: 8000.00 psig
 Start Date: 2016.08.31 End Date: 2016.08.31 Last Calib.: 2016.08.31
 Start Time: 20:10:57 End Time: 23:41:22 Time On Btm: 2016.08.31 @ 21:30:52
 Time Off Btm: 2016.08.31 @ 22:19:22

TEST COMMENT: 20-IFP-surface bl died in 18 min
 20-ISIP-no bl
 pulled tool



PRESSURE SUMMARY

Time (Min.)	Pressure (psig)	Temp (deg F)	Annotation
0	1687.86	100.45	Initial Hydro-static
3	21.84	99.93	Open To Flow (1)
24	22.51	100.57	Shut-In(1)
46	39.93	100.83	End Shut-In(1)
49	1683.92	101.13	Final Hydro-static

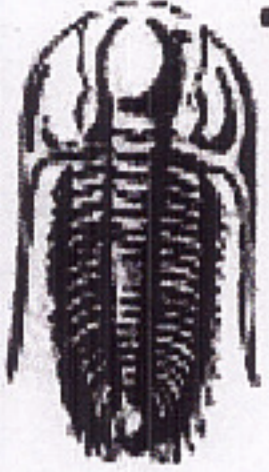
Recovery

Length (ft)	Description	Volume (bbl)
2.00	Mud	0.03

Gas Rates

Choke (inches)	Pressure (psig)	Gas Rate (Mcf/d)

* Recovery from multiple tests



**TRILOBITE
TESTING, INC**

DRILL STEM TEST REPORT

FLUID SUMMARY

C G Oil Inc
PO Box 207
Victoria KS 67601
ATTN: Ron Schmidtberger

34-13s-18w Ellis,KS
Walker Lease #1
Job Ticket: 63070 **DST#: 3**
Test Start: 2016.08.31 @ 20:10:57

Mud and Cushion Information

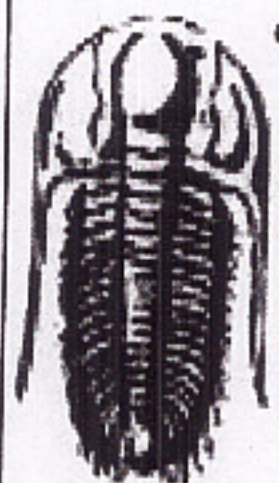
Mud Type: Gel Chem	Cushion Type:	Oil API:	deg API
Mud Weight: 9.00 lb/gal	Cushion Length: ft	Water Salinity:	ppm
Viscosity: 61.00 sec/qt	Cushion Volume: bbl		
Water Loss: 6.77 in ³	Gas Cushion Type:		
Resistivity: ohm.m	Gas Cushion Pressure: psig		
Salinity: 3800.00 ppm			
Filter Cake: 1.00 inches			

Recovery Information

Recovery Table

Length ft	Description	Volume bbl
2.00	Mud	0.028

Total Length: 2.00 ft Total Volume: 0.028 bbl
Num Fluid Samples: 0 Num Gas Bombs: 0 Serial #:
Laboratory Name: Laboratory Location:
Recovery Comments:



**TRILOBITE
TESTING, INC**

DRILL STEM TEST REPORT

TOOL DIAGRAM

C G Oil Inc
PO Box 207
Victoria KS 67601

34-13s-18w Ellis,KS

Walker Lease #1

Job Ticket: 63070

DST#: 3

ATTN: Ron Schmidtberger

Test Start: 2016.08.31 @ 20:10:57

Tool Information

Drill Pipe:	Length: 3417.00 ft	Diameter: 3.80 inches	Volume: 47.93 bbl	Tool Weight: 2200.00 lb
Heavy Wt. Pipe:	Length: 0.00 ft	Diameter: 0.00 inches	Volume: 0.00 bbl	Weight set on Packer: 25000.00 lb
Drill Collar:	Length: 0.00 ft	Diameter: 0.00 inches	Volume: 0.00 bbl	Weight to Pull Loose: 40000.00 lb
			Total Volume: 47.93 bbl	Tool Chased 0.00 ft
Drill Pipe Above KB:	10.00 ft			String Weight: Initial 32000.00 lb
Depth to Top Packer:	3428.00 ft			Final 32000.00 lb
Depth to Bottom Packer:	ft			
Interval between Packers:	42.00 ft			
Tool Length:	63.00 ft			
Number of Packers:	2	Diameter: 6.75 inches		
Tool Comments:				

Tool Description

Tool Description	Length (ft)	Serial No.	Position	Depth (ft)	Accum. Lengths
Change Over Sub	1.00			3408.00	
Shut In Tool	5.00			3413.00	
Hydraulic tool	5.00			3418.00	
Packer	5.00			3423.00	21.00 Bottom Of Top Packer
Packer	5.00			3428.00	
Stubb	1.00			3429.00	
Perforations	5.00			3434.00	
Recorder	0.00	8018	Inside	3434.00	
Recorder	0.00	8700	Outside	3434.00	
Blank Spacing	33.00			3467.00	
Bullnose	3.00			3470.00	42.00 Bottom Packers & Anchor

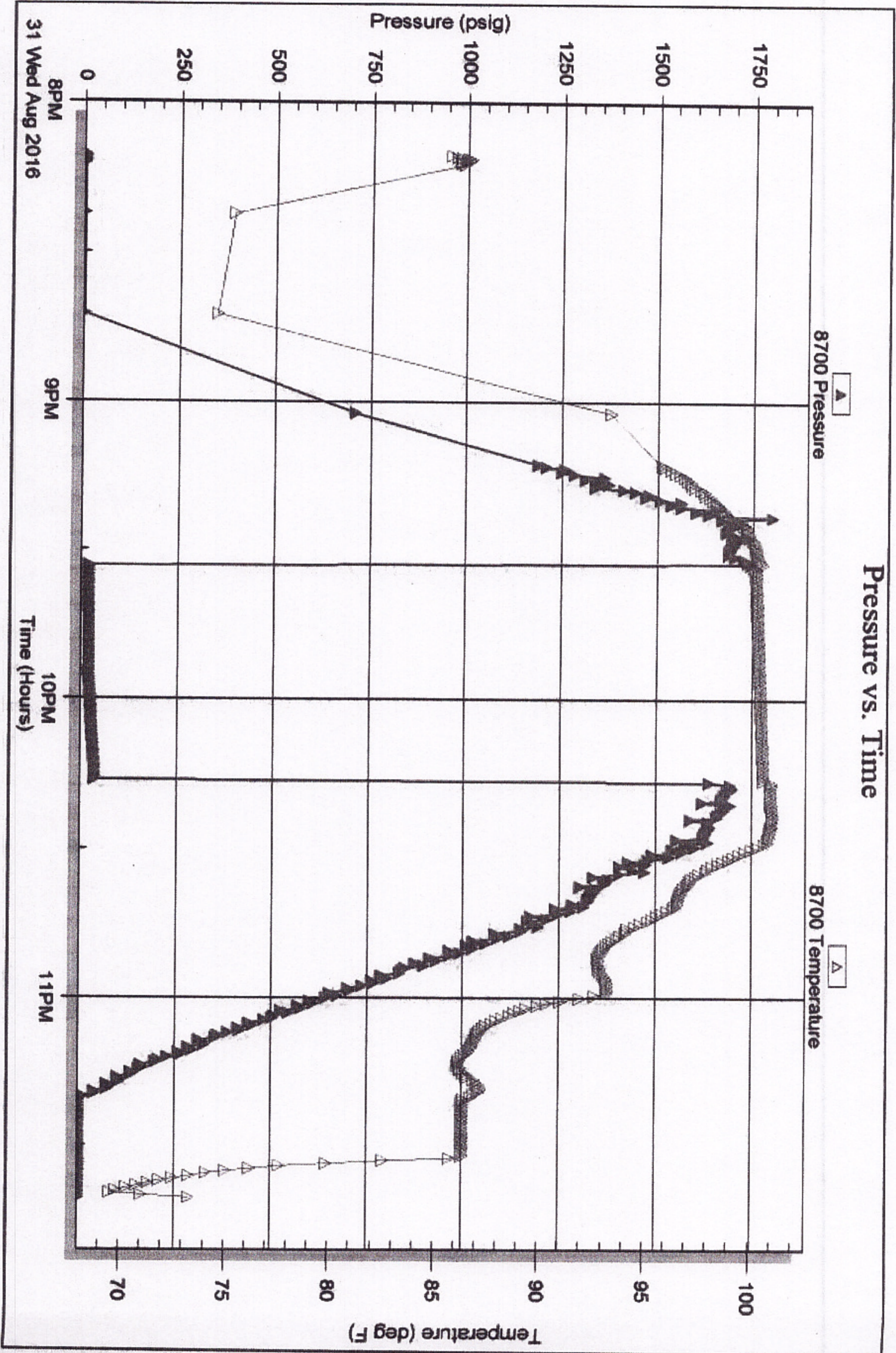
Total Tool Length: 63.00

Serial #: 8700

Outside CG Oil Inc

Walker Lease #1

DST Test Number: 3



Tribolite Testing, Inc

Ref. No: 63070

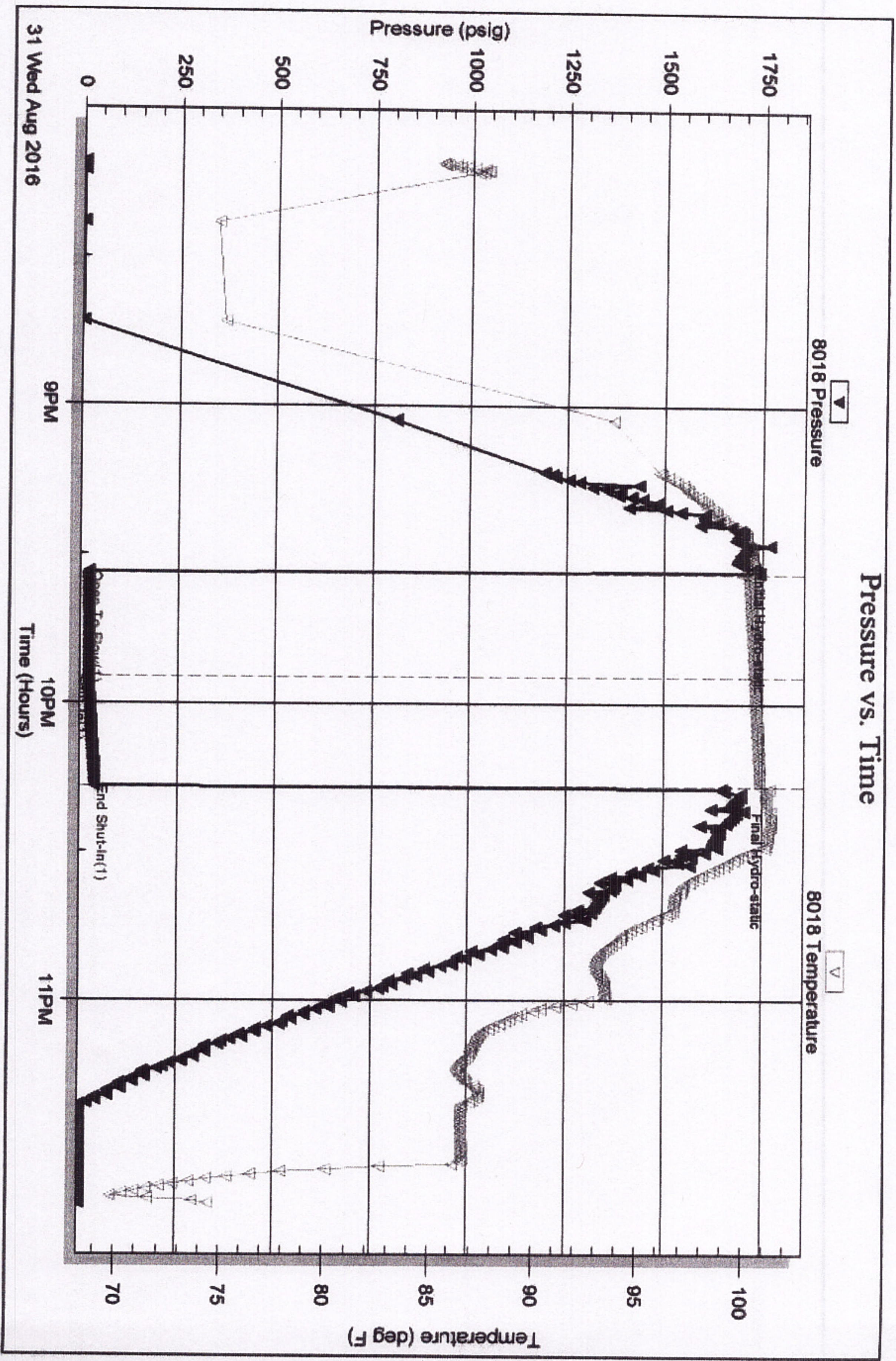
Printed: 2016.09.01 @ 08:54:32

Serial #: 8018

Inside CG Oil Inc

Walker Lease #1

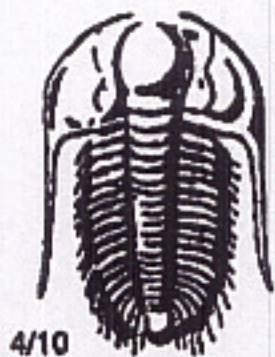
DST Test Number: 3



Tribotek Testing, Inc

Ref. No: 63070

Printed: 2016.09.01 @ 08:54:31



TRILOBITE TESTING INC.

1515 Commerce Parkway • Hays, Kansas 67601

Test Ticket

NO. 63068

Well Name & No. Walker Lease #1 Test No. 1 Date 8-30-16
 Company CG OIL, Inc Elevation 1960 KB 1952 GL
 Address 2550 Airbase Rd. PO Box 207 Victoria, Ks 67601
 Co. Rep / Geo. Roger Fisher Rig Southward rig 3
 Location: Sec. 34 Twp. 13^s Rge. 18^w Co. Ellis State Ks

Interval Tested 3145-3228 Zone Tested TORONTO - LKCB
 Anchor Length 83 Drill Pipe Run 3135 Mud Wt. 8.9
 Top Packer Depth 3140 Drill Collars Run - Vis 61
 Bottom Packer Depth 3145 Wt. Pipe Run - WL 6.8
 Total Depth 3228 Chlorides 3800 ppm System LCM 2#

Blow Description I FP - WEAK TO STRONG IN 23 MIN
ISIP - SURFACE BLOW BACK
FFP - WEAK TO STRONG IN 15 MIN
FSIP - SURFACE BLOW BACK

Rec	Feet of	%gas	%oil	%water	%mud
<u>330</u>	<u>GIP</u>				
<u>40</u>	<u>HD + GCM</u>	<u>5</u>	<u>20</u>	<u>75</u>	<u>0</u>
<u>60</u>	<u>D + GCM</u>	<u>10</u>	<u>10</u>	<u>10</u>	<u>70</u>

Rec Total 100 BHT 99 Gravity - API RW .14 @ 70 ° F Chlorides 53000 ppm

(A) Initial Hydrostatic 1510 Test 1050 T-On Location 0825
 (B) First Initial Flow 20 Jars _____ T-Started 1005
 (C) First Final Flow 42 Safety Joint _____ T-Open 1135
 (D) Initial Shut-In 578 Circ Sub _____ T-Pulled 1435
 (E) Second Initial Flow 50 Hourly Standby _____ T-Out 1611
 (F) Second Final Flow 64 Mileage 27 RT 20.25 Comments _____
 (G) Final Shut-In 574 Sampler _____
 (H) Final Hydrostatic 1492 Straddle _____ Ruined Shale Packer _____
 Shale Packer _____ Ruined Packer _____
 Extra Packer _____ Extra Copies _____
 Initial Open 30 Extra Recorder _____ Sub Total 0
 Initial Shut-In 45 Day Standby _____ Total 1070.25
 Final Flow 45 Accessibility _____ MP/DST Disc't _____
 Final Shut-In 60

Sub Total 1070.25

Approved By _____ Our Representative RAY SCHWAGER *THANK YOU*

Trilobite Testing Inc. shall not be liable for damaged of any kind of the property or personnel of the one for whom a test is made, or for any loss suffered or sustained, directly or indirectly, through the use of its equipment, or its statements or opinion concerning the results of any test, tools lost or damaged in the hole shall be paid for at cost by the party for whom the test is made.



TRILOBITE TESTING INC.

1515 Commerce Parkway • Hays, Kansas 67601

Test Ticket

NO. 63069

Well Name & No. WALKER Lease #1 Test No. 2 Date 8-30-16
 Company CG OIL, Inc Elevation 1960 KB 1952 GL
 Address 2550 Airbase Rd. PO Box 207 Victoria, Mo 67601
 Co. Rep / Geo. Roger Fisher Rig Southwind rig 3
 Location: Sec. 34 Twp. 13^s Rge. 18^w Co. ELLIS State K

Interval Tested 3232-3287 Zone Tested LKC "E"
 Anchor Length 55 Drill Pipe Run 015 Mud Wt. 9
 Top Packer Depth 3227 Drill Collars Run - Vis 54
 Bottom Packer Depth 3232 Wt. Pipe Run - WL 6.8
 Total Depth 3287 Chlorides 3800 ppm System LCM 2#

Blow Description IFP - WEAK TO STRONG IN 8 MIN
ISIP - WEAK BLOW BACK SURFACE TO 2" BLOW
FFP - WEAK TO STRONG IN 5 MIN
FSIP - SURFACE TO 4" BLOW BACK

Rec	Feet of	%gas	%oil	%water	%mud
<u>520</u>	<u>GIP</u>				
<u>20</u>	<u>CO</u>				
<u>70</u>	<u>M50</u>	<u>10</u>	<u>70</u>	<u>10</u>	<u>10</u>
<u>62</u>	<u>0+6CWM</u>	<u>20</u>	<u>6</u>	<u>34</u>	<u>40</u>
<u>62</u>	<u>MW</u>			<u>90</u>	<u>10</u>

Rec Total 214 BHT 99 Gravity 30 API RW .09 @ 68 °F Chlorides 88000 ppm

(A) Initial Hydrostatic 1552 Test 1050 T-On Location 2340
 (B) First Initial Flow 28 Jars _____ T-Started 0030
 (C) First Final Flow 72 Safety Joint _____ T-Open 0150
 (D) Initial Shut-In 547 Circ Sub _____ T-Pulled 0350
 (E) Second Initial Flow 86 Hourly Standby _____ T-Out 0526
 (F) Second Final Flow 119 Mileage 27 RT 20.25 Comments _____
 (G) Final Shut-In 514 Sampler _____
 (H) Final Hydrostatic 1531 Straddle _____ Ruined Shale Packer _____
 Shale Packer _____ Ruined Packer _____
 Extra Packer _____ Extra Copies _____
 Initial Open 30 Extra Recorder _____ Sub Total 0
 Initial Shut-In 30 Day Standby _____ Total 1070.25
 Final Flow 30 Accessibility _____ MP/DST Disc't _____
 Final Shut-In 30

Sub Total 1070.25
 Approved By _____ Our Representative RAY SCHWAGN Thank you

Trilobite Testing Inc. shall not be liable for damaged of any kind of the property or personnel of the one for whom a test is made, or for any loss suffered or sustained, directly or indirectly, through the use of its equipment, or its statements or opinion concerning the results of any test, tools lost or damaged in the hole shall be paid for at cost by the party for whom the test is made.



TRILOBITE TESTING INC.

1515 Commerce Parkway • Hays, Kansas 67601

Test Ticket

NO. 63070

Well Name & No. WALKER Lease #1 Test No. 3 Date 8-31-16
 Company C6 OIL, Inc Elevation 1960 KB 1952 GL
 Address 2550 Airbase Rd PO Box 207 VICTORIA, Ks 67601
 Co. Rep / Geo. Roger Fisher Rig Southwind rig 3
 Location: Sec. 34 Twp. 13^s Rge. 18^w Co. ELLIS State Ks

Interval Tested 3428-3470 Zone Tested Cond. sd
 Anchor Length 42 Drill Pipe Run 3417 Mud Wt. 9.1
 Top Packer Depth 3423 Drill Collars Run - Vis 54
 Bottom Packer Depth 3428 Wt. Pipe Run - WL 6.4
 Total Depth 3470 Chlorides 5100 ppm System LCM 2 #

Blow Description I FP - SURFACE Blow, died in 18 min
ISIP - NO Blow
~~I FP~~
~~ISIP~~

Rec	Feet of	%gas	%oil	%water	%mud
<u>2</u>	<u>Mud</u>				

Rec Total 2 BHT 101 Gravity - API RW - @ - ° F Chlorides - ppm

(A) Initial Hydrostatic 1687 Test 1050 T-On Location 1930
 (B) First Initial Flow 21 Jars - T-Started 2010
 (C) First Final Flow 22 Safety Joint - T-Open 2130
 (D) Initial Shut-In 40 Circ Sub - T-Pulled 2210
 (E) Second Initial Flow - Hourly Standby - T-Out 2341
 (F) Second Final Flow - Mileage 27 RT 20.25 Comments -
 (G) Final Shut-In - Sampler -
 (H) Final Hydrostatic 1683 Straddle - Ruined Shale Packer -
 Shale Packer - Ruined Packer -
 Extra Packer - Extra Copies -
 Initial Open 20 Extra Recorder - Sub Total 0
 Initial Shut-In 20 Day Standby - Total 1070.25
 Final Flow - Accessibility - MP/DST Disc't -
 Final Shut-In - Sub Total 1070.25

Approved By _____ Our Representative RAY SCHWAGER *Thank you*

TriLOBITE Testing Inc. shall not be liable for damaged of any kind of the property or personnel of the one for whom a test is made, or for any loss suffered or sustained, directly or indirectly, through the use of its equipment, or its statements or opinion concerning the results of any test, tools lost or damaged in the hole shall be paid for at cost by the party for whom the test is made.