



DIAMOND TESTING
P.O. Box 157
HOISINGTON, KANSAS 67544
(800) 542-7313
DRILL-STEM TEST TICKET
FILE: FURY1DST3

TIME ON: 17:50
TIME OFF: 22:50

Company RJM Company Lease & Well No. Fury Farms #1
Contractor Southwind Drlg Rig #3 Charge to RJM Company
Elevation 1898' KB Formation KC "C&D" Effective Pay _____ Ft. Ticket No. F443
Date 10-4-16 Sec. 13 Twp. _____ 19s S Range _____ 13w W County Barton State KANSAS
Test Approved By Wyatt Urban Diamond Representative Jake Fahrenbruch

Formation Test No. 3 Interval Tested from 3254 ft. to 3278 ft. Total Depth 3278 ft.
Packer Depth 3249 ft. Size 6 3/4 in. Packer depth _____ ft. Size 6 3/4 in.
Packer Depth 3254 ft. Size 6 3/4 in. Packer depth _____ ft. Size 6 3/4 in.
Depth of Selective Zone Set _____

Top Recorder Depth (Inside) 3256 ft. Recorder Number 5951 Cap. 5000 P.S.I.
Bottom Recorder Depth (Outside) 3257 ft. Recorder Number 5584 Cap. 5000 P.S.I.
Below Straddle Recorder Depth _____ ft. Recorder Number _____ Cap. _____ P.S.I.
Mud Type CHEMICAL Viscosity 48 (1.5# LCM) Drill Collar Length 0 ft. I.D. 2 1/4 in.
Weight 9.2 Water Loss 8.8 cc. Weight Pipe Length 0 ft. I.D. 2 7/8 in.
Chlorides 5,000 P.P.M. Drill Pipe Length 3,234 ft. I.D. 3 1/2 in.
Jars: Make STERLING Serial Number _____ Test Tool Length 20 ft. Tool Size 3 1/2-IF in.
Did Well Flow? NO Reversed Out NO Anchor Length 24 ft. Size 4 1/2-FH in.
Main Hole Size 7 7/8 Tool Joint Size 4 1/2 XH in. Surface Choke Size 1 in. Bottom Choke Size 5/8 in.

Blow: 1st Open: tool slid 4', 2" blow, blow did not increased.
2nd Open: no blow, flushed tool twice, no blow.

Recovered 30 ft. of drilling mud 100% mud
Recovered _____ ft. of _____
Recovered _____ ft. of _____
Recovered _____ ft. of _____
Recovered _____ ft. of _____

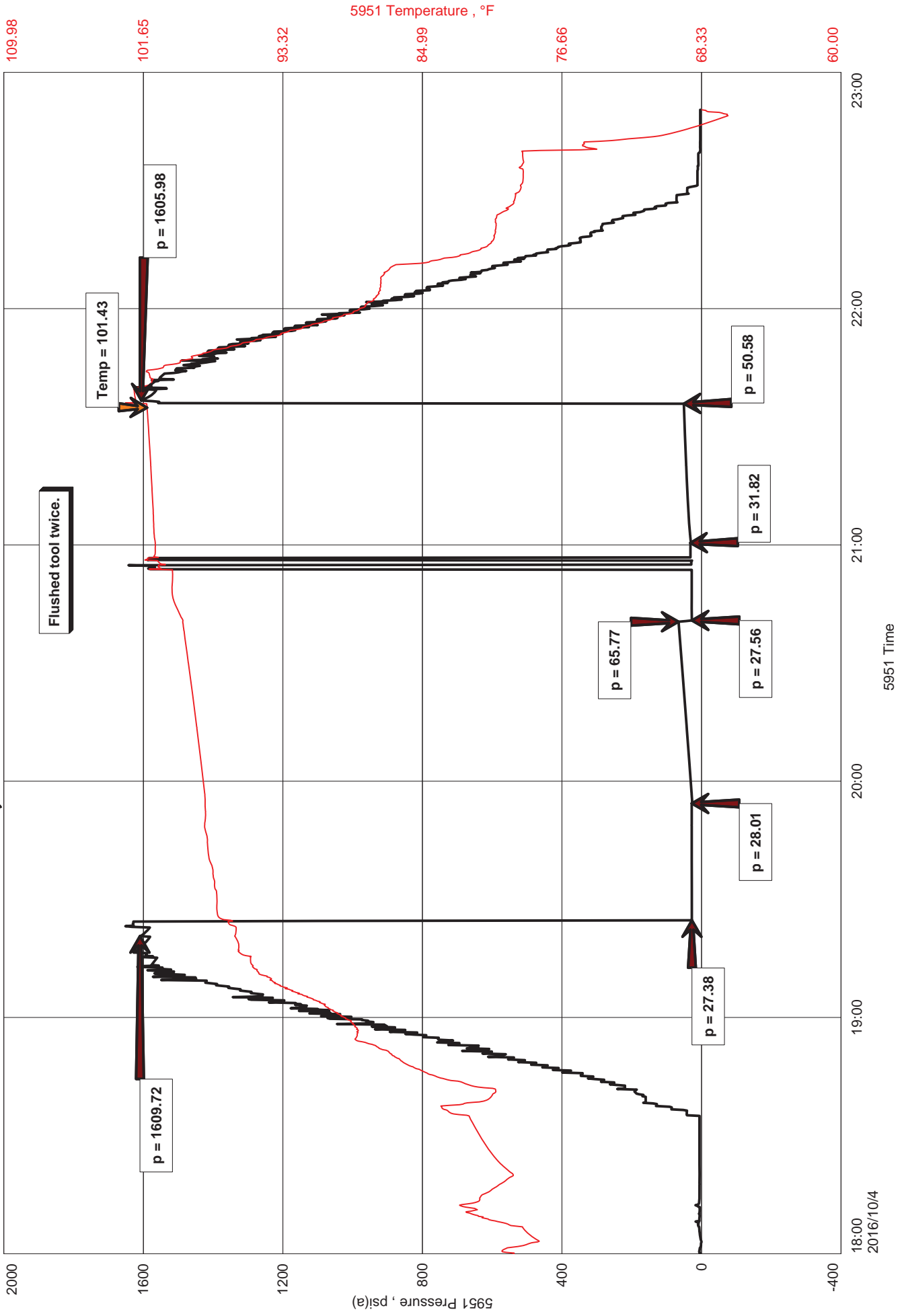
Remarks: Tools were not plugged.

	Price Job
	Other Charges
	Insurance
	Total

Time Set Packer(s) 19:25 A.M. P.M. Time Started Off Bottom 21:30 A.M. P.M. Maximum Temperature 101 F
Initial Hydrostatic Pressure..... (A) 1610 P.S.I.
Initial Flow Period..... Minutes 30 (B) 27 P.S.I. to (C) 28 P.S.I.
Initial Closed In Period..... Minutes 45 (D) 66 P.S.I.
Final Flow Period..... Minutes 20 (E) 28 P.S.I. to (F) 32 P.S.I.
Final Closed In Period..... Minutes 30 (G) 51 P.S.I.
Final Hydrostatic Pressure..... (H) 1606 P.S.I.

Diamond Testing shall not be liable for damages of any kind to the property or personnel of the one for whom a test is made or for any loss suffered or sustained, directly or indirectly, through the use of its equipment, or its statement or opinion concerning the result of any test. Tools lost or damaged in the hole shall be paid for at cost by the party for whom the test is made.

FURY FARMS #1, DST #3 KANSAS CITY 3254'-3278'





DIAMOND TESTING
 P.O. Box 157
 HOISINGTON, KANSAS 67544
 (800) 542-7313
DRILL-STEM TEST TICKET
 FILE: FURY1DST3

ON LOCATION:	<u>17:30</u>
START RECORDERS:	<u>17:50</u>
STOP RECORDERS:	<u>22:50</u>

Company RJM COMPANY Lease & Well No. FURY FARMS #1
 Contractor SOUTHWIND DRLLG. RIG #3 Charge to RJM COMPANY
 Elevation 1898' KB Formation KANSAS CITY "EFF" Effective Pay _____ Ft. Ticket No. F444
 Date 10-4-16 Sec. 13 Twp. 19S Range 13W County BARTON State KANSAS
 Test Approved By WYATT URBAN Diamond Representative JAKE FAHRENBRUCH

Formation Test No. 3 Interval Tested from 3254 ft. to 3278 ft. Total Depth 3278 ft.
 Packer Depth 3249 ft. Size 6 3/4 in. Packer depth _____ ft. Size 6 3/4 in.
 Packer Depth 3254 ft. Size 6 3/4 in. Packer depth _____ ft. Size 6 3/4 in.
 Depth of Selective Zone Set _____

Top Recorder Depth (Inside) 3256 ft. Recorder Number 5951 Cap. 5000 P.S.I.
 Bottom Recorder Depth (Outside) 3257 ft. Recorder Number 5584 Cap. 5000 P.S.I.
 Below Straddle Recorder Depth _____ ft. Recorder Number _____ Cap. _____ P.S.I.

Mud Type CHEMICAL Viscosity 48 (1 1/2" x 200) Drill Collar Length _____ ft. I.D. 2 1/4 in.
 Weight 9.2 Water Loss 8.8 cc. Weight Pipe Length _____ ft. I.D. 2 7/8 in.
 Chlorides 5000 P.P.M. Drill Pipe Length 3234 ft. I.D. 3 1/2 in.
 Jars: Make STERLING Serial Number _____ Test Tool Length 20 ft. Tool Size 3 1/2-IF in.
 Did Well Flow? _____ Reversed Out _____ Anchor Length 24 ft. Size 4 1/2-FH in.
 Main Hole Size 7 7/8 Tool Joint Size 4 1/2" JH in. Surface Choke Size 1 in. Bottom Choke Size 5/8 in.

Blow: 1st Open: Tool seized 4', 2" blow, blow did not increase. No BB.
 2nd Open: No blow, flushed tool twice. No blows

Recovered 30 ft. of Dry Mud 100" mud
 Recovered _____ ft. of _____
 Recovered _____ ft. of _____
 Recovered _____ ft. of _____
 Recovered _____ ft. of _____
 Recovered _____ ft. of _____

Remarks: TOOLS were not plugged.

Price Job
Other Charges
Total

Time Set Packer(s) 19:25 A.M. P.M. Time Started Off Bottom 21:30 A.M. P.M. Maximum Temperature 101°F

Initial Hydrostatic Pressure..... (A) 1610 P.S.I.
 Initial Flow Period..... Minutes 30 (B) 27 P.S.I. to (C) 28 P.S.I.
 Initial Closed In Period..... Minutes 45 (D) 66 P.S.I.
 Final Flow Period..... Minutes 20 (E) 28 P.S.I. to (F) 32 P.S.I.
 Final Closed In Period..... Minutes 30 (G) 51 P.S.I. Thanks!
 Final Hydrostatic Pressure..... (H) 1606 P.S.I. Jake Fahrenbruch

Diamond Testing shall not be liable for damages of any kind to the property or personnel of the one for whom a test is made or for any loss suffered or sustained, directly or indirectly, through the use of its equipment, or its statement or opinion concerning the result of any test. Tools lost or damaged in the hole shall be paid for at cost by the party for whom the test is made.

DIAMOND TESTING GENERAL REPORT

Jake Fahrenbruch, Tester

Cell: (620) 282-8977 / Office: (800) 542-7313



TEST INFORMATION

Well Name	Fury Farms #1
Company Name	RJM Company
Formation	DST #3 Kansas City "E&F" 3254'-3278'
Test Type	Bottom-Hole
Surface Location	Sec 13-19s-13w-Barton Co.-KS
KB Elevation (SL)	578.510
Gauge Name	5951
Start Test Date	2016/10/04
Start Test Time	17:50:00
Final Test Date	2016/10/04
Final Test Time	22:50:00
Job Number	F444
Contact	Brad Miller
Site Contact	Wyatt Urban

TEST RESULTS

Initial flow, tool slid 4' to bottom after opening, resulting in a 2" blow. Blow never increased.
 Final flow, surge blow upon re-opening tool, no blow, flushed tool twice with surge blow both times, no blow.

Recovered 30' of drilling mud.

TOOL WAS NOT PLUGGED

FURY FARMS #1, DST #3 KANSAS CITY 3254'-3278'

