



**DIAMOND TESTING**  
P.O. Box 157  
**HOISINGTON, KANSAS 67544**  
(800) 542-7313  
**DRILL-STEM TEST TICKET**  
FILE: FURY1DST4

TIME ON: 19:07  
TIME OFF: 01:24

Company RJM Company Lease & Well No. Fury Farms #1  
Contractor Southwind Drlg Rig #3 Charge to RJM Company  
Elevation 1898' KB Formation Arbuckle Effective Pay \_\_\_\_\_ Ft. Ticket No. F445  
Date 10-4-16 Sec. 13 Twp. \_\_\_\_\_ 19s S Range 13w W County Barton State KANSAS  
Test Approved By Wyatt Urban Diamond Representative Jake Fahrenbruch

Formation Test No. 4 Interval Tested from 3416 ft. to 3490 ft. Total Depth 3490 ft.  
Packer Depth 3411 ft. Size 6 3/4 in. Packer depth \_\_\_\_\_ ft. Size 6 3/4 in.  
Packer Depth 3416 ft. Size 6 3/4 in. Packer depth \_\_\_\_\_ ft. Size 6 3/4 in.  
Depth of Selective Zone Set \_\_\_\_\_

Top Recorder Depth (Inside) 3420 ft. Recorder Number 5951 Cap. 5000 P.S.I.  
Bottom Recorder Depth (Outside) 3421 ft. Recorder Number 5584 Cap. 5000 P.S.I.  
Below Straddle Recorder Depth \_\_\_\_\_ ft. Recorder Number \_\_\_\_\_ Cap. \_\_\_\_\_ P.S.I.

Mud Type CHEMICAL Viscosity 48 (1# LCM) Drill Collar Length 0 ft. I.D. 2 1/4 in.  
Weight 9.4 Water Loss 9.2 cc. Weight Pipe Length 0 ft. I.D. 2 7/8 in.  
Chlorides 6,000 P.P.M. Drill Pipe Length 3,396 ft. I.D. 3 1/2 in.  
Jars: Make STERLING Serial Number \_\_\_\_\_ Test Tool Length 20 ft. Tool Size 3 1/2-IF in.  
Did Well Flow? NO Reversed Out NO Anchor Length 74 ft. Size 4 1/2-FH in.  
Main Hole Size 7 7/8 Tool Joint Size 4 1/2 XH in. 62' DP in anchor Surface Choke Size 1 in. Bottom Choke Size 5/8 in.

Blow: 1st Open: Blow increased to BOB in 22 minutes 15 seconds. No blowback.  
2nd Open: Blow increased to BOB in 33 minutes. No blowback.

Recovered 90 ft. of Clean Oil 100% oil  
Recovered 120 ft. of GCOM 10% gas, 40% oil, 50% mud  
Recovered 60 ft. of HGCOCM 20% gas, 10% oil, 70% mud

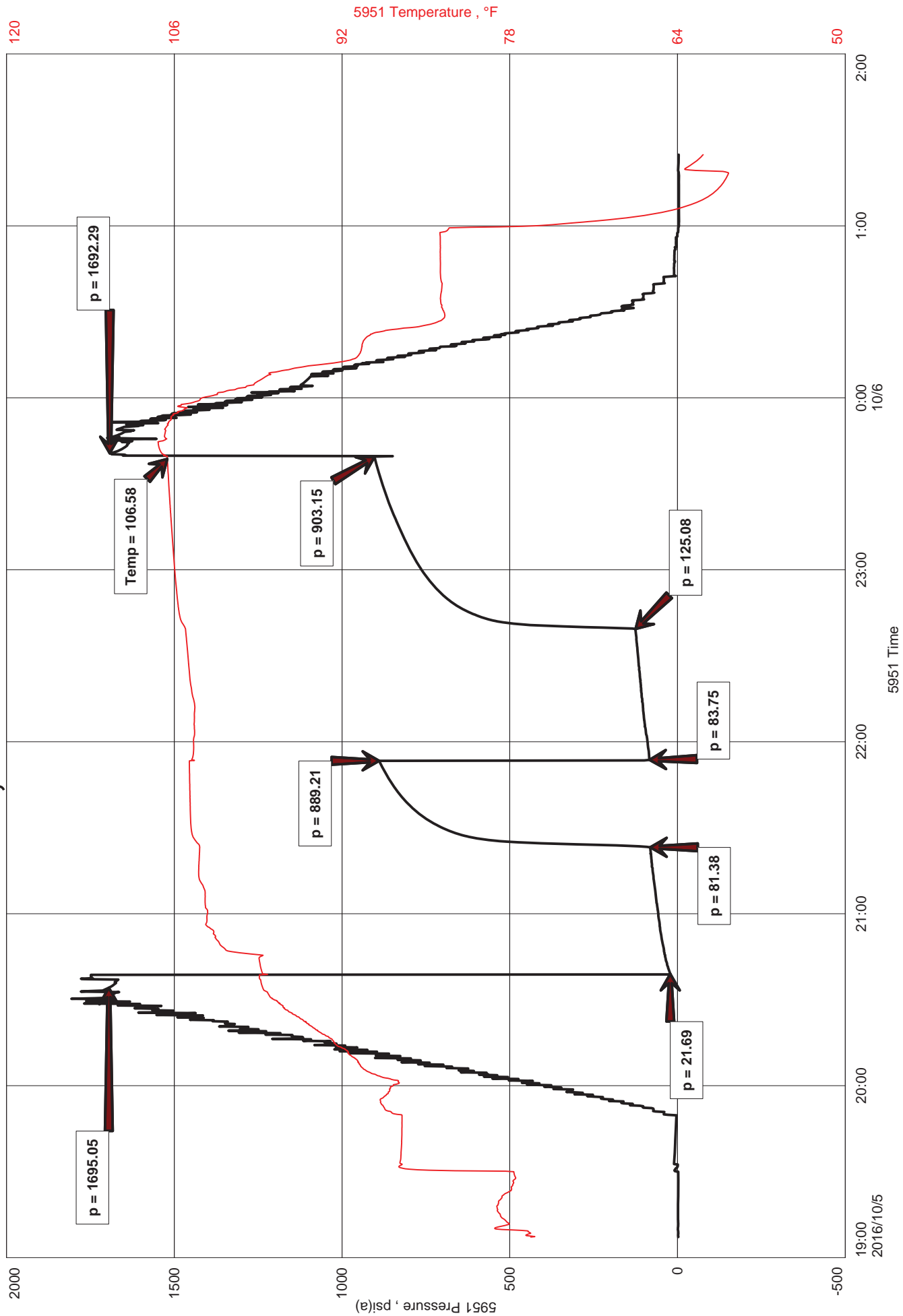
Recovered _____ ft. of _____	Price Job
Recovered _____ ft. of _____	Other Charges
Recovered _____ ft. of _____	Insurance
Remarks: <u>TOTAL RECOVERED FLUID: 270'</u> <u>32 gravity oil @ 60 F</u>	Total

Time Set Packer(s) 20:38 A.M. P.M. Time Started Off Bottom 23:38 A.M. P.M. Maximum Temperature 107 F

Initial Hydrostatic Pressure..... (A) 1695 P.S.I.  
Initial Flow Period..... Minutes 45 (B) 22 P.S.I. to (C) 81 P.S.I.  
Initial Closed In Period..... Minutes 30 (D) 889 P.S.I.  
Final Flow Period..... Minutes 45 (E) 84 P.S.I. to (F) 125 P.S.I.  
Final Closed In Period..... Minutes 60 (G) 903 P.S.I.  
Final Hydrostatic Pressure..... (H) 1692 P.S.I.

Diamond Testing shall not be liable for damages of any kind to the property or personnel of the one for whom a test is made or for any loss suffered or sustained, directly or indirectly, through the use of its equipment, or its statement or opinion concerning the result of any test. Tools lost or damaged in the hole shall be paid for at cost by the party for whom the test is made.

# FURY FARMS #1, DST #4 ARBUCKLE 3416'-3490'





**DIAMOND TESTING**  
 P. O. Box 157  
 HOISINGTON, KANSAS 67544  
 (800) 542-7313  
**DRILL-STEM TEST TICKET**  
 FILE: FURY1DST4

ON LOCATION:	_____
START RECORDERS:	<u>1907</u>
STOP RECORDERS:	<u>0124</u>

Company RJM COMPANY Lease & Well No. FURY FARMS #1  
 Contractor SOUTHWIND DRLLG RIG #3 Charge to RJM COMPANY  
 Elevation 1898' NB Formation ARBUCKLE Effective Pay \_\_\_\_\_ Ft. Ticket No. F445  
 Date 10-5-16 Sec. 13 Twp. 19S Range 13W County BARTON State KANSAS  
 Test Approved By WYATT URBAN Diamond Representative JAKE FAHRENBRUCH

Formation Test No. 4 Interval Tested from 3416 ft. to 3490 ft. Total Depth 3490 ft.  
 Packer Depth 3411 ft. Size 6 3/4 in. Packer depth \_\_\_\_\_ ft. Size 6 3/4 in.  
 Packer Depth 3416 ft. Size 6 3/4 in. Packer depth \_\_\_\_\_ ft. Size 6 3/4 in.  
 Depth of Selective Zone Set \_\_\_\_\_

Top Recorder Depth (Inside) 3420 ft. Recorder Number 5951 Cap. 5000 P.S.I.  
 Bottom Recorder Depth (Outside) 3421 ft. Recorder Number 5584 Cap. 5000 P.S.I.  
 Below Straddle Recorder Depth \_\_\_\_\_ ft. Recorder Number \_\_\_\_\_ Cap. \_\_\_\_\_ P.S.I.

Mud Type CHEMICAL Viscosity 48 (1\*LCM) Drill Collar Length \_\_\_\_\_ ft. I.D. 2 1/4 in.  
 Weight 9.4 Water Loss 9.2 cc. Weight Pipe Length \_\_\_\_\_ ft. I.D. 2 7/8 in.  
 Chlorides 6000 P.P.M. Drill Pipe Length 3396 ft. I.D. 3 1/2 in.  
 Jars: Make STERLING Serial Number \_\_\_\_\_ Test Tool Length 20 ft. Tool Size 3 1/2-IF in.  
 Did Well Flow? \_\_\_\_\_ Reversed Out \_\_\_\_\_ Anchor Length 74 ft. Size 4 1/2-FH in.  
 Main Hole Size 7 7/8 Tool Joint Size 4 1/2" XH in. 62' DP IN ANCHOR Surface Choke Size \_\_\_\_\_ in. Bottom Choke Size 5/8 in.

Blow: 1st Open: BLOW INCREASED TO B.O.B. IN 22 1/4 MINUTES. NO BLOWBACK.  
 2nd Open: BLOW INCREASED TO B.O.B. IN 33 MINUTES. NO BLOWBACK.

Recovered 90 ft. of CLEAN OIL 100% OIL  
 Recovered 120 ft. of GCOM 10" GAS, 40" OIL, 50" MUD  
 Recovered 60 ft. of HGC OCM 20" GAS, 10" OIL, 70" MUD

Recovered _____ ft. of _____	Price Job
Recovered _____ ft. of _____	Other Charges
Remarks: <u>TOTAL RECOVERED FLUID: 270'</u> <u>GRAVITY: 32 @ 60°F</u>	
	Total

Time Set Packer(s) 20:38 A.M. P.M. Time Started Off Bottom 23:38 A.M. P.M. Maximum Temperature 107°F

Initial Hydrostatic Pressure..... (A) 1695 P.S.I.  
 Initial Flow Period..... Minutes 45 (B) 22 P.S.I. to (C) 81 P.S.I.  
 Initial Closed In Period..... Minutes 30 (D) 889 P.S.I.  
 Final Flow Period..... Minutes 45 (E) 84 P.S.I. to (F) 125 P.S.I.  
 Final Closed In Period..... Minutes 60 (G) 903 P.S.I. THANKS!  
 Final Hydrostatic Pressure..... (H) 1692 P.S.I. Jake Fahrenbruch

Diamond Testing shall not be liable for damages of any kind to the property or personnel of the one for whom a test is made or for any loss suffered or sustained directly or indirectly, through the use of its equipment, or its statement or opinion concerning the result of any test. Tools lost or damaged in the hole shall be paid for at cost by the party for whom the test is made.

# DIAMOND TESTING GENERAL REPORT

Jake Fahrenbruch, Tester

Cell: (620) 282-8977 / Office: (800) 542-7313



## TEST INFORMATION

<b>Well Name</b>	Fury Farms #1
<b>Company Name</b>	RJM Company
<b>Formation</b>	DST #4 Arbuckle 3416'-3490'
<b>Test Type</b>	Bottom-Hole
<b>Surface Location</b>	Sec 13-19s-19w-Barton Co.-KS
<b>KB Elevation (SL)</b>	1898.000
<b>Gauge Name</b>	5951
<b>Start Test Date</b>	2016/10/05
<b>Start Test Time</b>	19:07:00
<b>Final Test Date</b>	2016/10/06
<b>Final Test Time</b>	01:24:00
<b>Job Number</b>	F445
<b>Contact</b>	Brad Miller
<b>Site Contact</b>	Wyatt Urban

## TEST RESULTS

Initial flow, blow increased to BOB in 22 minutes 15 seconds. No blowback.  
 Final flow, blow increased to BOB in 33 minutes. No blowback.

TOTAL RECOVERED FLUID: 270'

90'	Clean Oil	100% oil
120'	GCOM	10% gas, 40% oil, 50% mud
60'	HGCOM	20% gas, 10% oil, 70% mud
----	32 gravity oil @ 60 Deg F	

## FURY FARMS #1, DST #4 ARBUCKLE 3416'-3490'

