



**TRILOBITE  
TESTING, INC**

# DRILL STEM TEST REPORT

Dixon Operating CO

**34-22S-12W Stafford**

8100 E 22nd Ste 200  
Wichita, KS 67226

**Jas 1-34**

Job Ticket: 55424

**DST#: 1**

ATTN: Chuck Schmalz

Test Start: 2016.10.10 @ 01:38:43

## GENERAL INFORMATION:

Formation: **Lansing "A-F"**

Deviated: No Whipstock: ft (KB)

Time Tool Opened: 03:50:28

Time Test Ended: 08:40:28

Test Type: Conventional Bottom Hole (Initial)

Tester: Leal Cason

Unit No: 74

**Interval: 3318.00 ft (KB) To 3392.00 ft (KB) (TVD)**

Reference Elevations: 1850.00 ft (KB)

Total Depth: 3392.00 ft (KB) (TVD)

1839.00 ft (CF)

Hole Diameter: 7.88 inches Hole Condition: Good

KB to GR/CF: 11.00 ft

**Serial #: 8525**

**Inside**

Press@RunDepth: 95.09 psig @ 3319.00 ft (KB)

Capacity: 8000.00 psig

Start Date: 2016.10.10

End Date:

2016.10.10

Last Calib.:

2016.10.10

Start Time: 01:38:44

End Time:

08:40:28

Time On Btm:

2016.10.10 @ 03:42:58

Time Off Btm:

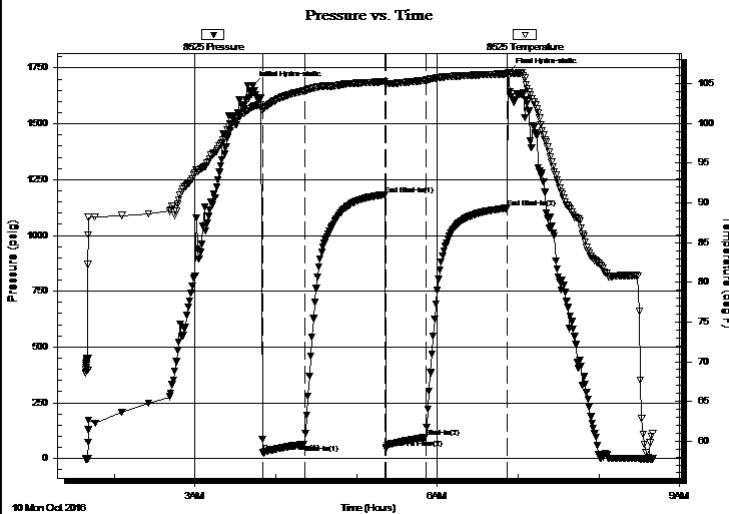
2016.10.10 @ 06:52:58

TEST COMMENT: IF: Strong Blow , BOB in 2 minutes

IS: No Blow Back

FF: Strong Blow , BOB immediate, GTS in 16 minutes, TSTM, Caught Sample

FS: No Blow Back



## PRESSURE SUMMARY

Time (Min.)	Pressure (psig)	Temp (deg F)	Annotation
0	1669.64	102.12	Initial Hydro-static
8	27.70	102.02	Open To Flow (1)
39	65.65	104.12	Shut-In(1)
99	1182.59	105.27	End Shut-In(1)
100	45.43	105.01	Open To Flow (2)
129	95.09	105.43	Shut-In(2)
190	1123.05	106.25	End Shut-In(2)
190	1730.64	106.40	Final Hydro-static

## Recovery

Length (ft)	Description	Volume (bbl)
0.00	3188 GIP	0.00
130.00	GCM 10%G 90%M	0.64

## Gas Rates

	Choke (inches)	Pressure (psig)	Gas Rate (Mcf/d)





**TRILOBITE  
TESTING, INC**

# DRILL STEM TEST REPORT

## FLUID SUMMARY

Dixon Operating CO

**34-22S-12W Stafford**

8100 E 22nd Ste 200  
Wichita, KS 67226

**Jas 1-34**

Job Ticket: 55424

**DST#: 1**

ATTN: Chuck Schmaltz

Test Start: 2016.10.10 @ 01:38:43

### Mud and Cushion Information

Mud Type: Gel Chem

Cushion Type:

Oil API:

deg API

Mud Weight: 9.00 lb/gal

Cushion Length:

ft

Water Salinity:

ppm

Viscosity: 55.00 sec/qt

Cushion Volume:

bbbl

Water Loss: 7.60 in<sup>3</sup>

Gas Cushion Type:

Resistivity: ohm.m

Gas Cushion Pressure:

psig

Salinity: 5800.00 ppm

Filter Cake: 0.02 inches

### Recovery Information

Recovery Table

Length ft	Description	Volume bbbl
0.00	3188 GIP	0.000
130.00	GCM 10%G 90%M	0.639

Total Length: 130.00 ft      Total Volume: 0.639 bbl

Num Fluid Samples: 0

Num Gas Bombs: 0

Serial #:

Laboratory Name:

Laboratory Location:

Recovery Comments:

