

**TRILOBITE TESTING, INC.**

# DRILL STEM TEST REPORT

Dixon Operating CO

**34-22S-12W Stafford**

8100 E 22nd Ste 200  
Wichita, KS 67226

**Jas 1-34**

Job Ticket: 57951

**DST#: 3**

ATTN: Chuck Schmalz

Test Start: 2016.10.11 @ 13:29:38

## GENERAL INFORMATION:

Formation: **Viola**

Deviated: No Whipstock: ft (KB)

Time Tool Opened: 15:09:53

Time Test Ended: 20:56:08

Test Type: Conventional Bottom Hole (Reset)

Tester: Leal Cason

Unit No: 74

**Interval: 3535.00 ft (KB) To 3620.00 ft (KB) (TVD)**

Reference Elevations: 1850.00 ft (KB)

Total Depth: 3620.00 ft (KB) (TVD)

1839.00 ft (CF)

Hole Diameter: 7.88 inches Hole Condition: Good

KB to GR/CF: 11.00 ft

**Serial #: 8525 Inside**

Press@RunDepth: 52.50 psig @ 3536.00 ft (KB)

Capacity: 8000.00 psig

Start Date: 2016.10.11

End Date:

2016.10.11

Last Calib.:

2016.10.11

Start Time: 13:29:39

End Time:

20:56:08

Time On Btm:

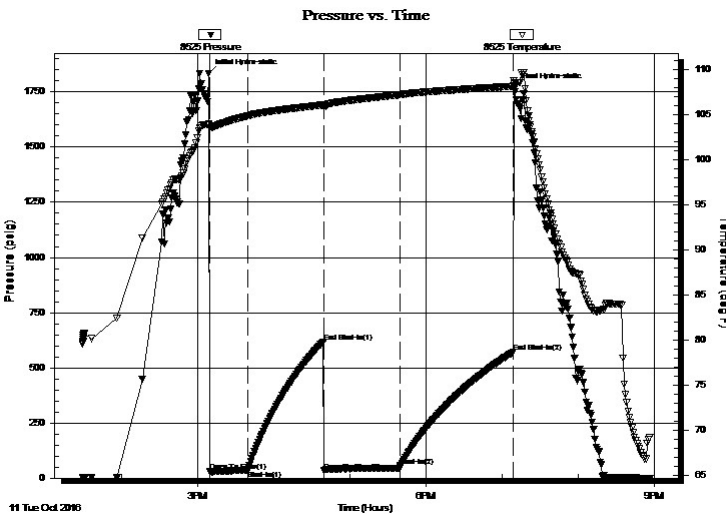
2016.10.11 @ 15:08:53

Time Off Btm:

2016.10.11 @ 19:09:23

**TEST COMMENT:** IF: Strong Blow , BOB in 3 minutes  
IS: No Blow Back  
FF: Strong Blow , BOB Immediate  
FS: No Blow Back

## PRESSURE SUMMARY



Time (Min.)	Pressure (psig)	Temp (deg F)	Annotation
0	1832.69	103.90	Initial Hydro-static
1	28.78	103.51	Open To Flow (1)
31	37.35	104.84	Shut-In(1)
91	617.86	106.05	End Shut-In(1)
91	32.78	105.90	Open To Flow (2)
151	52.50	107.18	Shut-In(2)
240	570.27	108.13	End Shut-In(2)
241	1768.81	108.45	Final Hydro-static

## Recovery

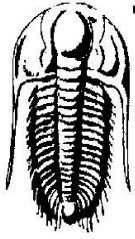
Length (ft)	Description	Volume (bbl)
0.00	215 GIP	0.00
60.00	SGCM 5%G 95%M	0.30

\* Recovery from multiple tests

## Gas Rates

Choke (inches)	Pressure (psig)	Gas Rate (Mcf/d)





**TRILOBITE  
TESTING, INC.**

# DRILL STEM TEST REPORT

**FLUID SUMMARY**

Dixon Operating CO

**34-22S-12W Stafford**

8100 E 22nd Ste 200  
Wichita, KS 67226

**Jas 1-34**

Job Ticket: 57951

**DST#: 3**

ATTN: Chuck Schmaltz

Test Start: 2016.10.11 @ 13:29:38

## Mud and Cushion Information

Mud Type: Gel Chem

Cushion Type:

Oil API:

deg API

Mud Weight: 9.00 lb/gal

Cushion Length:

ft

Water Salinity:

ppm

Viscosity: 55.00 sec/qt

Cushion Volume:

bbbl

Water Loss: 7.59 in<sup>3</sup>

Gas Cushion Type:

Resistivity: ohm.m

Gas Cushion Pressure:

psig

Salinity: 5800.00 ppm

Filter Cake: 0.02 inches

## Recovery Information

Recovery Table

Length ft	Description	Volume bbl
0.00	215 GIP	0.000
60.00	SGCM 5%G 95%M	0.295

Total Length: 60.00 ft      Total Volume: 0.295 bbl

Num Fluid Samples: 0

Num Gas Bombs: 0

Serial #:

Laboratory Name:

Laboratory Location:

Recovery Comments:

### Pressure vs. Time

