



TRILOBITE TESTING, INC

DRILL STEM TEST REPORT

Slawson Exploration Co., Inc.

26/5s/36w Rawlins KS

204 N. Robinson Ave.
STE 2300
Oklahoma City, OK 73102
ATTN: Pete Debenham

Faber #1-26

Job Ticket: 62694

DST#: 1

Test Start: 2016.09.27 @ 04:55:05

GENERAL INFORMATION:

Formation: **Toronto - Lans. "C"**

Deviated: No Whipstock: ft (KB)

Time Tool Opened: 06:34:45

Time Test Ended: 11:33:44

Test Type: Conventional Bottom Hole (Initial)

Tester: James Winder

Unit No: 83

Interval: **4216.00 ft (KB) To 4290.00 ft (KB) (TVD)**

Reference Elevations: 3368.00 ft (KB)

Total Depth: 4290.00 ft (KB) (TVD)

3363.00 ft (CF)

Hole Diameter: 7.88 inches Hole Condition: Fair

KB to GR/CF: 5.00 ft

Serial #: 6625 Inside

Press@RunDepth: 375.40 psig @ 4217.00 ft (KB)

Capacity: 8000.00 psig

Start Date: 2016.09.27 End Date: 2016.09.27

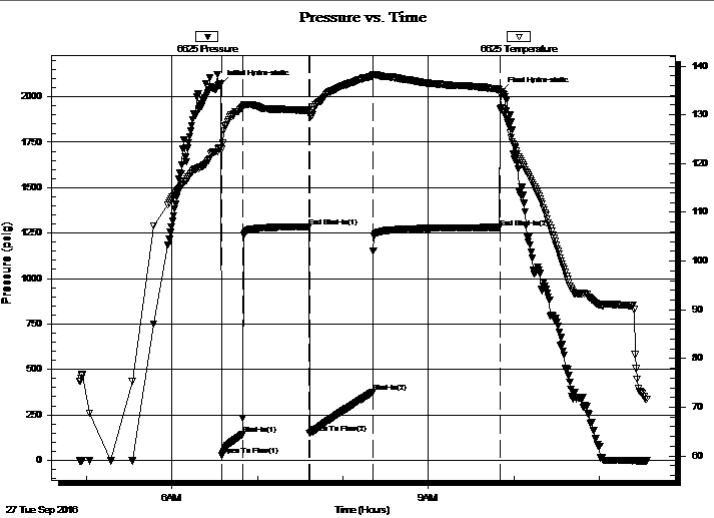
Last Calib.: 2016.09.27

Start Time: 04:55:05 End Time: 11:33:44

Time On Btm: 2016.09.27 @ 06:34:15

Time Off Btm: 2016.09.27 @ 09:51:14

TEST COMMENT: 15 - IF: Blow built to BOB (11") at 8 3/4 min.
45 - IS: No blow back
45 - FF: Blow built to BOB at 10 1/2 min.
90 - FS: No blow back



PRESSURE SUMMARY

Time (Min.)	Pressure (psig)	Temp (deg F)	Annotation
0	2068.16	123.27	Initial Hydro-static
1	25.50	122.92	Open To Flow (1)
16	143.85	131.45	Shut-In(1)
62	1285.66	130.90	End Shut-In(1)
63	146.77	130.45	Open To Flow (2)
107	375.40	137.95	Shut-In(2)
196	1281.59	135.24	End Shut-In(2)
197	2029.68	131.34	Final Hydro-static

Recovery

Length (ft)	Description	Volume (bbl)
121.00	WCM w/trace oil 68%m, 32%w	0.60
314.00	MCW w/trace oil 85%w, 15%m	4.40
190.00	MCW w/trace oil 66%w, 34%m	2.67
125.00	WCM w/trace oil 67%m, 33%w	1.75
40.00	Mud w/trace oil 100%m	0.56

Gas Rates

Choke (inches)	Pressure (psig)	Gas Rate (Mcf/d)
----------------	-----------------	------------------



**TRILOBITE
TESTING, INC**

DRILL STEM TEST REPORT

Slaw son Exploration Co., Inc.

26/5s/36w Rawlins KS

204 N. Robinson Ave.
STE 2300
Oklahoma City, OK 73102
ATTN: Pete Debenham

Faber #1-26

Job Ticket: 62694

DST#: 1

Test Start: 2016.09.27 @ 04:55:05

GENERAL INFORMATION:

Formation: **Toronto - Lans. "C"**

Deviated: No Whipstock: ft (KB)

Time Tool Opened: 06:34:45

Time Test Ended: 11:33:44

Interval: 4216.00 ft (KB) To 4290.00 ft (KB) (TVD)

Total Depth: 4290.00 ft (KB) (TVD)

Hole Diameter: 7.88 inches Hole Condition: Fair

Test Type: Conventional Bottom Hole (Initial)

Tester: James Winder

Unit No: 83

Reference Elevations: 3368.00 ft (KB)

3363.00 ft (CF)

KB to GR/CF: 5.00 ft

Serial #: 8366 Outside

Press@RunDepth: psig @ 4217.00 ft (KB)

Start Date: 2016.09.27

End Date:

2016.09.27

Start Time: 04:55:05

End Time:

11:33:14

Capacity: 8000.00 psig

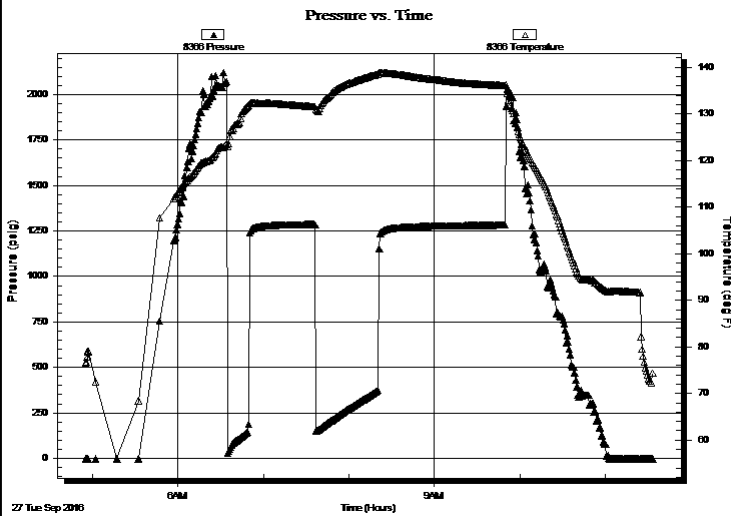
Last Calib.:

2016.09.27

Time On Btm:

Time Off Btm:

TEST COMMENT: 15 - IF: Blow built to BOB (11") at 8 3/4 min.
45 - ISI: No blow back
45 - FF: Blow built to BOB at 10 1/2 min.
90 - FSI: No blow back



PRESSURE SUMMARY

Time (Min.)	Pressure (psig)	Temp (deg F)	Annotation

Recovery

Length (ft)	Description	Volume (bbl)
121.00	WCM w/trace oil 68%w, 32%w	0.60
314.00	MCW w/trace oil 85%w, 15%m	4.40
190.00	MCW w/trace oil 66%w, 34%m	2.67
125.00	WCM w/trace oil 67%w, 33%w	1.75
40.00	Mud w/trace oil 100%w	0.56

Gas Rates

	Choke (inches)	Pressure (psig)	Gas Rate (Mcf/d)



**TRILOBITE
TESTING, INC**

DRILL STEM TEST REPORT

FLUID SUMMARY

Slaw son Exploration Co., Inc.

26/5s/36w Rawlins KS

204 N. Robinson Ave.
STE 2300
Oklahoma City, OK 73102
ATTN: Pete Debenham

Faber #1-26

Job Ticket: 62694

DST#: 1

Test Start: 2016.09.27 @ 04:55:05

Mud and Cushion Information

Mud Type: Gel Chem
Mud Weight: 9.00 lb/gal
Viscosity: 49.00 sec/qt
Water Loss: 6.39 in³
Resistivity: ohm.m
Salinity: 1800.00 ppm
Filter Cake: 1.00 inches

Cushion Type:
Cushion Length: ft
Cushion Volume: bbl
Gas Cushion Type:
Gas Cushion Pressure: psig

Oil API: deg API
Water Salinity: 21000 ppm

Recovery Information

Recovery Table

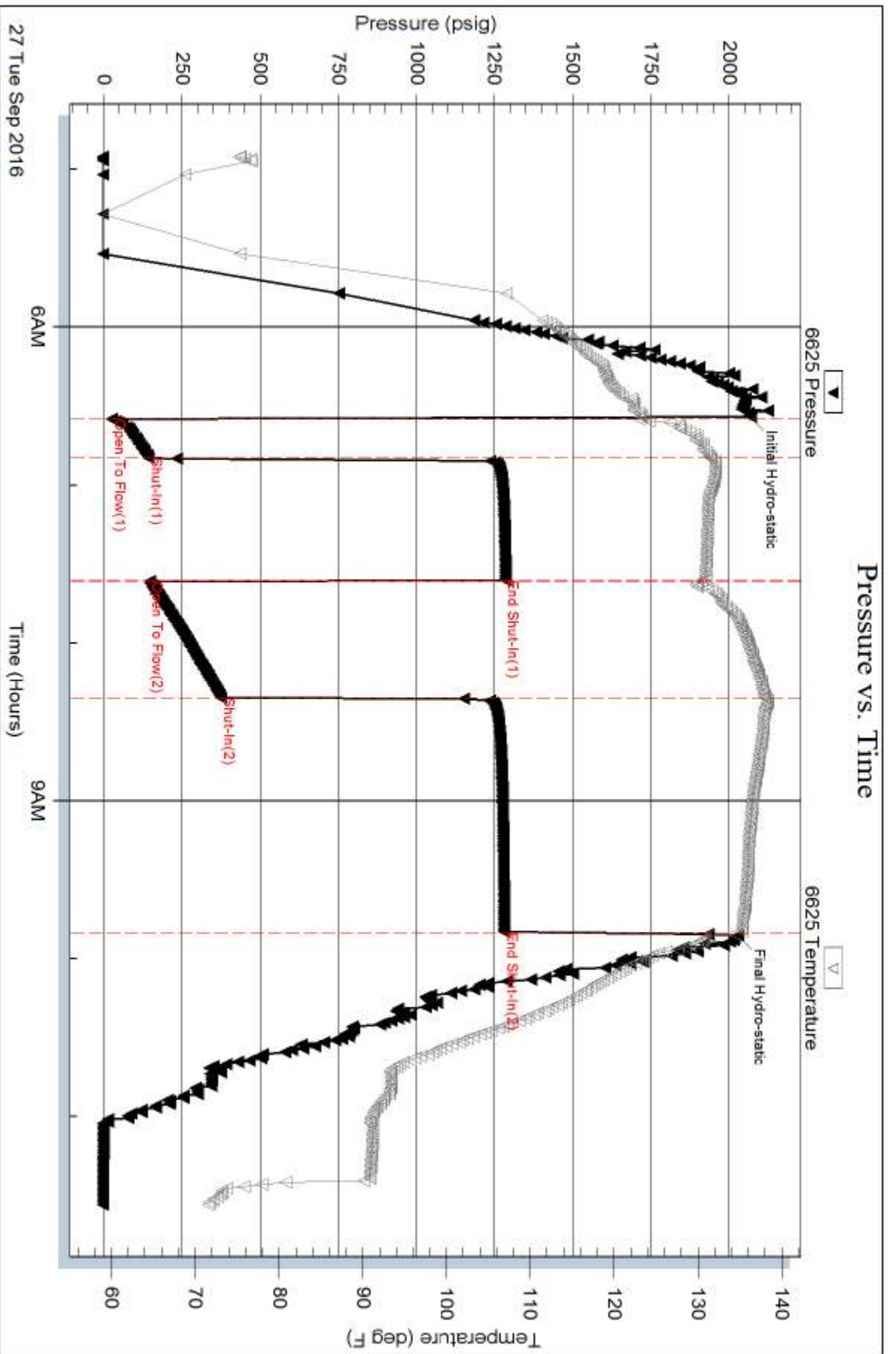
Length ft	Description	Volume bbl
121.00	WCM w /trace oil 68%m, 32%w	0.595
314.00	MCW w /trace oil 85%w , 15%m	4.405
190.00	MCW w /trace oil 66%w , 34%m	2.665
125.00	WCM w /trace oil 67%m, 33%w	1.753
40.00	Mud w /trace oil 100%m	0.561

Total Length: 790.00 ft Total Volume: 9.979 bbl

Num Fluid Samples: 0 Num Gas Bombs: 0 Serial #:

Laboratory Name: Laboratory Location:

Recovery Comments: RW = .310 ohms @ 73.5 deg F
Chlorides = 21,000 ppm

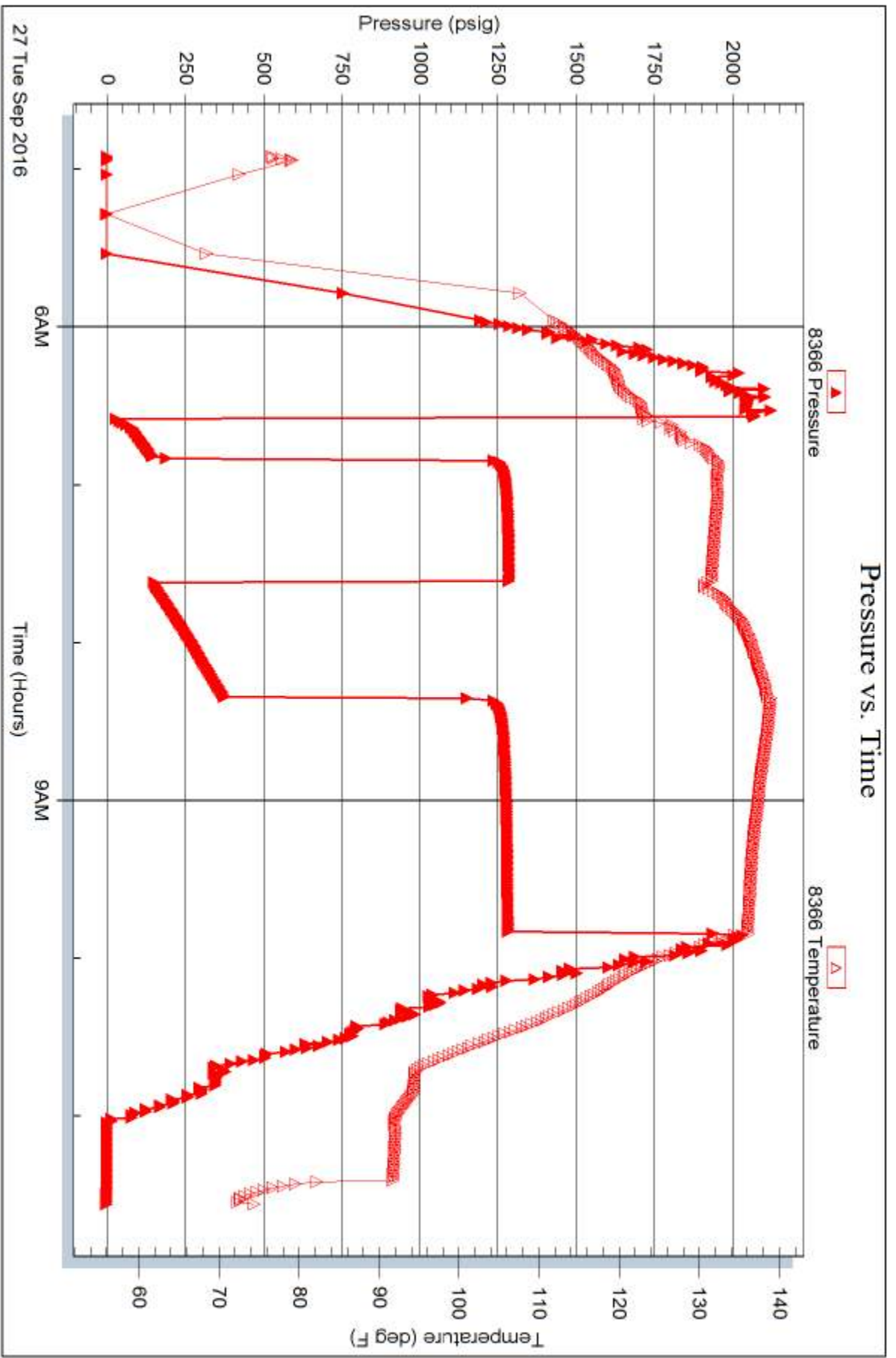


Serial #: 8366

Outside Saw son Exploration Co., Inc.

Faber #1-26

DST Test Number: 1



Trilobite Testing, Inc

Ref. No: 628594

Printed: 2016.09.27 @ 13:06:58