



**TRILOBITE TESTING, INC.**

# DRILL STEM TEST REPORT

Suemaaur Expl. & Prod. LLC

**19 7s 28w Sheridan KS**

539 N Carancahua Ste 1100  
Corpus Christi TX 78401

**Gaede 1-19**

Job Ticket: 61211

**DST#: 1**

ATTN: Bob Petersen

Test Start: 2016.12.12 @ 09:47:00

## GENERAL INFORMATION:

Formation: **Stotler**

Deviated: No Whipstock: ft (KB)

Time Tool Opened: 12:37:00

Time Test Ended: 17:50:00

Test Type: Conventional Bottom Hole (Initial)

Tester: Jim Svaty

Unit No: 76

**Interval: 3579.00 ft (KB) To 3594.00 ft (KB) (TVD)**

Reference Elevations: 2798.00 ft (KB)

Total Depth: 3594.00 ft (KB) (TVD)

2793.00 ft (CF)

Hole Diameter: 7.88 inches Hole Condition: Fair

KB to GR/CF: 5.00 ft

**Serial #: 8372 Outside**

Press@RunDepth: 29.58 psig @ 3581.00 ft (KB)

Capacity: 8000.00 psig

Start Date: 2016.12.12 End Date: 2016.12.12

Last Calib.: 2016.12.12

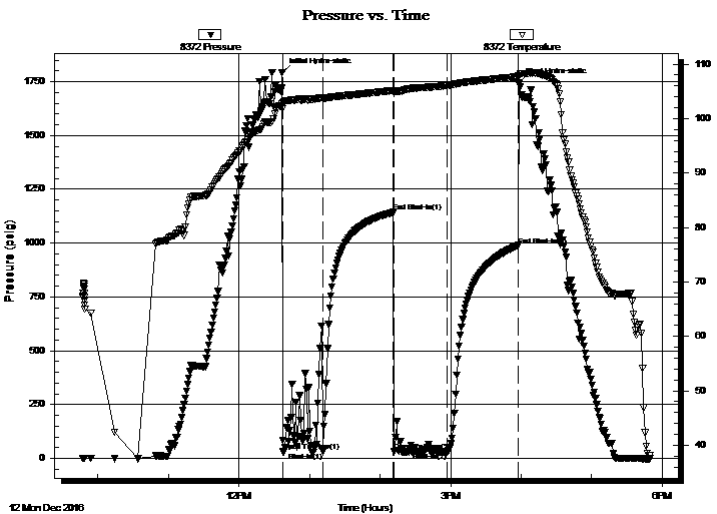
Start Time: 09:47:02 End Time: 17:50:00

Time On Btm: 2016.12.12 @ 12:36:45

Time Off Btm: 2016.12.12 @ 15:58:00

**TEST COMMENT:** 45-IFP- Surface Blow Building to 1 1/2in.  
60-ISIP- No Blow  
45-FFP- Weak Surface Blow in 4min.  
60-FSIP- No Blow

## PRESSURE SUMMARY



Time (Min.)	Pressure (psig)	Temp (deg F)	Annotation
0	1792.08	102.76	Initial Hydro-static
1	30.62	101.86	Open To Flow (1)
35	29.65	103.57	Shut-In(1)
95	1143.38	105.16	End Shut-In(1)
95	31.43	104.71	Open To Flow (2)
141	29.58	106.08	Shut-In(2)
201	989.52	107.68	End Shut-In(2)
202	1743.35	107.91	Final Hydro-static

## Recovery

Length (ft)	Description	Volume (bbl)
15.00	Oil Speck Mud 100%	0.07

## Gas Rates

	Choke (inches)	Pressure (psig)	Gas Rate (Mcf/d)



**TRILOBITE  
TESTING, INC**

# DRILL STEM TEST REPORT

Suemaaur Expl. & Prod. LLC

**19 7s 28w Sheridan KS**

539 N Carancahua Ste 1100  
Corpus Christi TX 78401

**Gaede 1-19**

Job Ticket: 61211

**DST#: 1**

ATTN: Bob Petersen

Test Start: 2016.12.12 @ 09:47:00

## GENERAL INFORMATION:

Formation: **Stotler**

Deviated: No Whipstock: ft (KB)

Time Tool Opened: 12:37:00

Time Test Ended: 17:50:00

**Interval: 3579.00 ft (KB) To 3594.00 ft (KB) (TVD)**

Total Depth: 3594.00 ft (KB) (TVD)

Hole Diameter: 7.88 inches Hole Condition: Fair

Test Type: Conventional Bottom Hole (Initial)

Tester: Jim Svaty

Unit No: 76

Reference Elevations: 2798.00 ft (KB)

2793.00 ft (CF)

KB to GR/CF: 5.00 ft

**Serial #: 8789**

**Inside**

Press@RunDepth: psig @ 3581.00 ft (KB)

Start Date: 2016.12.12

End Date:

2016.12.12

Start Time: 09:47:02

End Time:

17:49:45

Capacity: 8000.00 psig

Last Calib.:

2016.12.12

Time On Btm:

Time Off Btm:

**TEST COMMENT:** 45-IFP- Surface Blow Building to 1 1/2in.  
60-ISIP- No Blow  
45-FFP- Weak Surface Blow in 4min.  
60-FSIP- No Blow

## PRESSURE SUMMARY

Time (Min.)	Pressure (psig)	Temp (deg F)	Annotation
-------------	-----------------	--------------	------------

## Recovery

Length (ft)	Description	Volume (bbl)
15.00	Oil Speck Mud 100%	0.07

## Gas Rates

Choke (inches)	Pressure (psig)	Gas Rate (Mcf/d)
----------------	-----------------	------------------



**TRILOBITE  
TESTING, INC**

# DRILL STEM TEST REPORT

## FLUID SUMMARY

Suemaur Expl. & Prod. LLC

**19 7s 28w Sheridan KS**

539 N Carancahua Ste 1100  
Corpus Christi TX 78401

**Gaede 1-19**

Job Ticket: 61211

**DST#: 1**

ATTN: Bob Petersen

Test Start: 2016.12.12 @ 09:47:00

### Mud and Cushion Information

Mud Type: Gel Chem

Cushion Type:

Oil API:

deg API

Mud Weight: 9.00 lb/gal

Cushion Length:

ft

Water Salinity:

ppm

Viscosity: 73.00 sec/qt

Cushion Volume:

bbbl

Water Loss: 5.60 in<sup>3</sup>

Gas Cushion Type:

Resistivity: ohm.m

Gas Cushion Pressure:

psig

Salinity: 700.00 ppm

Filter Cake: 7.00 inches

### Recovery Information

Recovery Table

Length ft	Description	Volume bbl
15.00	Oil Speck Mud 100%	0.074

Total Length: 15.00 ft      Total Volume: 0.074 bbl

Num Fluid Samples: 0

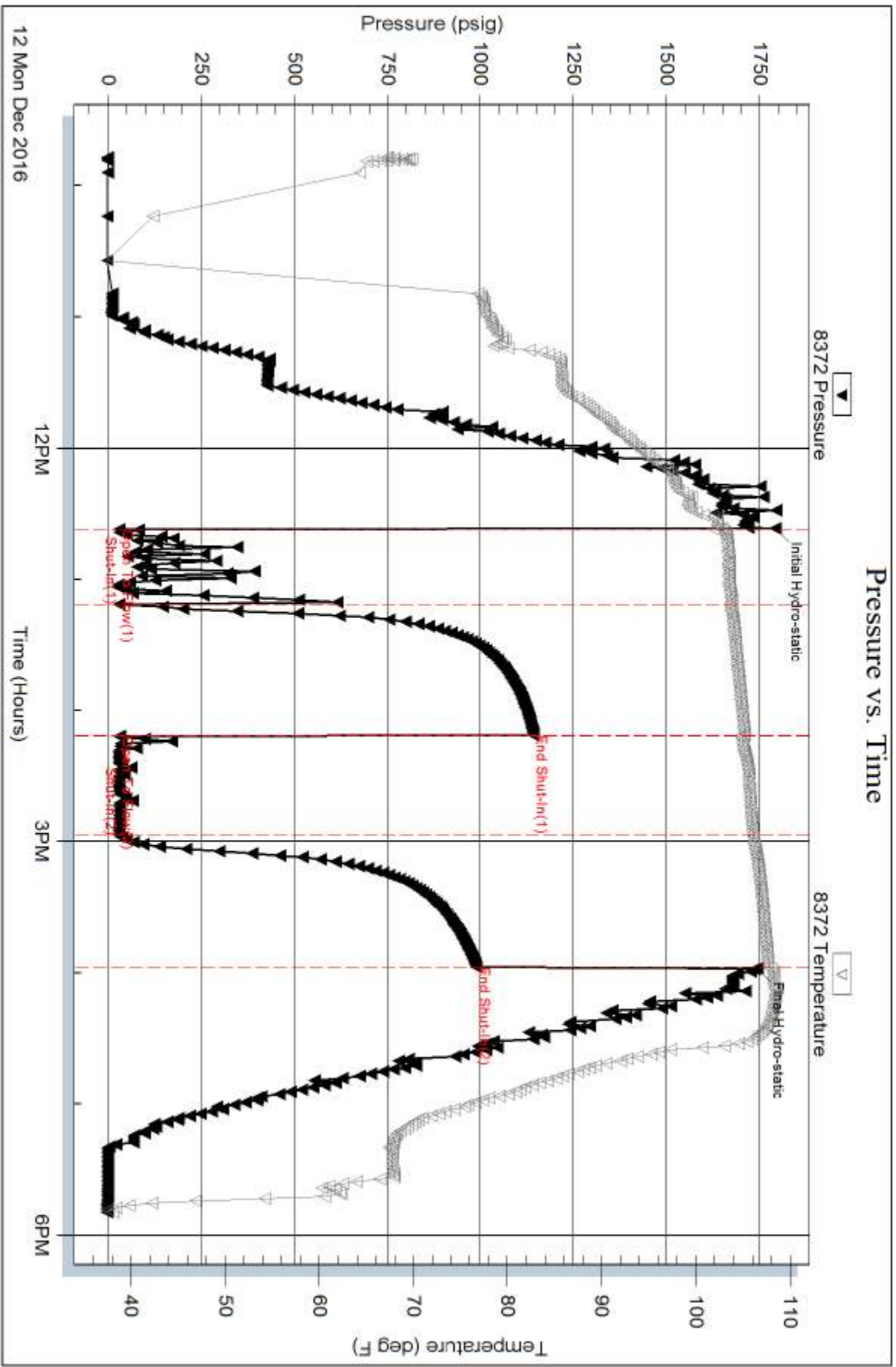
Num Gas Bombs: 0

Serial #:

Laboratory Name:

Laboratory Location:

Recovery Comments:



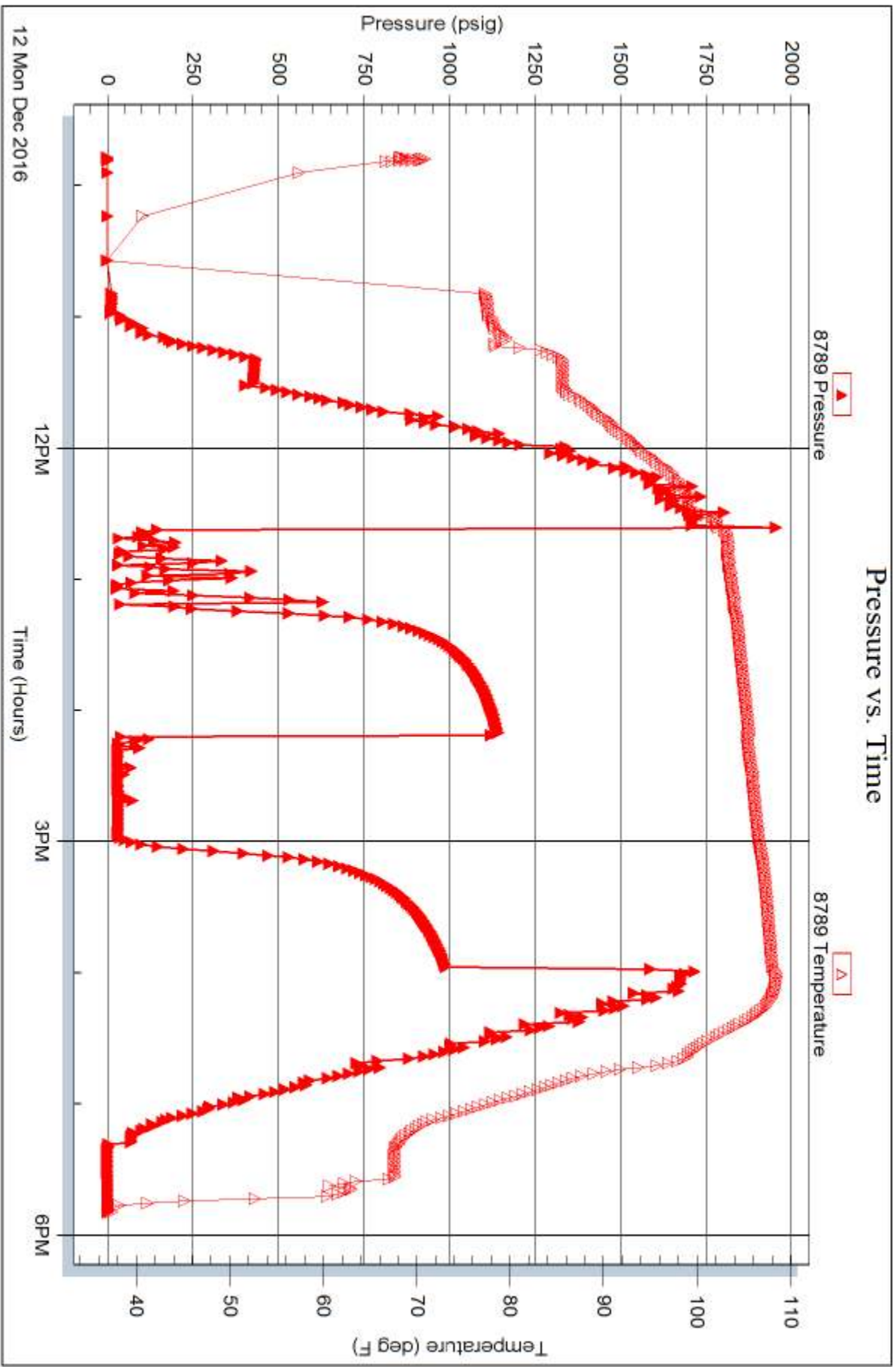
Serial #: 8789

Inside

Suenaer Expl. & Prod. LLC

Gaeede 1-19

DST Test Number: 1



Tribble Testing, Inc

Ref. No: 61211

Printed: 2016.12.12 @ 19:51:09



**TRILOBITE TESTING, INC**

# DRILL STEM TEST REPORT

Suemaour Expl. & Prod. LLC

**19 7s 28w Sheridan KS**

539 N Carancahua Ste 1100  
Corpus Christi TX 78401

**Gaede 1-19**

Job Ticket: 61212

**DST#: 2**

ATTN: Bob Peterson

Test Start: 2016.12.13 @ 22:28:00

## GENERAL INFORMATION:

Formation: **LKC " C"**

Deviated: No Whipstock: ft (KB)

Time Tool Opened: 00:55:15

Time Test Ended: 06:48:00

Test Type: Conventional Bottom Hole (Reset)

Tester: Jim Svaty

Unit No: 76

**Interval: 3956.00 ft (KB) To 3978.00 ft (KB) (TVD)**

Reference Elevations: 2798.00 ft (KB)

Total Depth: 3978.00 ft (KB) (TVD)

2793.00 ft (CF)

Hole Diameter: 7.88 inches Hole Condition: Fair

KB to GR/CF: 5.00 ft

**Serial #: 8372 Outside**

Press@RunDepth: 164.73 psig @ 3960.00 ft (KB)

Capacity: 8000.00 psig

Start Date: 2016.12.13

End Date:

2016.12.14

Last Calib.: 2016.12.14

Start Time: 22:28:02

End Time:

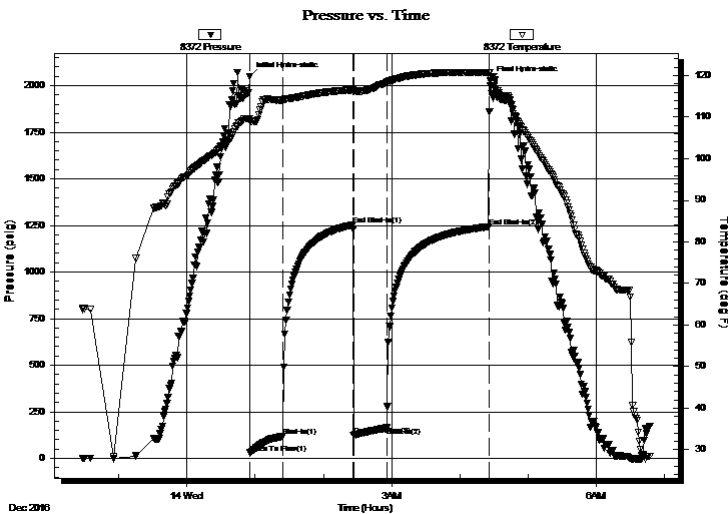
06:48:00

Time On Btm: 2016.12.14 @ 00:55:00

Time Off Btm: 2016.12.14 @ 04:26:45

**TEST COMMENT:** 30-IFP- BOB in 22min.  
60-ISIP- Weak Surface Blow in 5min. Died in 12min.  
30-FFP- BOB in 28min.  
90-FSIP- No Blow

## PRESSURE SUMMARY



Time (Min.)	Pressure (psig)	Temp (deg F)	Annotation
0	2048.43	109.65	Initial Hydro-static
1	28.78	109.00	Open To Flow (1)
30	118.22	114.09	Shut-In(1)
91	1253.03	116.57	End Shut-In(1)
92	123.27	116.18	Open To Flow (2)
121	164.73	118.32	Shut-In(2)
211	1242.45	120.74	End Shut-In(2)
212	2027.80	119.59	Final Hydro-static

## Recovery

Length (ft)	Description	Volume (bbl)
187.00	MCW 15%w 85%w	0.92
130.00	WCM 40%w 60%w	1.82

\* Recovery from multiple tests

## Gas Rates

	Choke (inches)	Pressure (psig)	Gas Rate (Mcf/d)



**TRILOBITE  
TESTING, INC**

# DRILL STEM TEST REPORT

Suemaaur Expl. & Prod. LLC

**19 7s 28w Sheridan KS**

539 N Carancahua Ste 1100  
Corpus Christi TX 78401

**Gaede 1-19**

Job Ticket: 61212

**DST#: 2**

ATTN: Bob Peterson

Test Start: 2016.12.13 @ 22:28:00

## GENERAL INFORMATION:

Formation: **LKC " C"**

Deviated: No Whipstock: ft (KB)

Time Tool Opened: 00:55:15

Time Test Ended: 06:48:00

Test Type: Conventional Bottom Hole (Reset)

Tester: Jim Svaty

Unit No: 76

**Interval: 3956.00 ft (KB) To 3978.00 ft (KB) (TVD)**

Reference Elevations: 2798.00 ft (KB)

Total Depth: 3978.00 ft (KB) (TVD)

2793.00 ft (CF)

Hole Diameter: 7.88 inches Hole Condition: Fair

KB to GR/CF: 5.00 ft

**Serial #: 8789** Inside

Press@RunDepth: psig @ 3960.00 ft (KB)

Capacity: 8000.00 psig

Start Date: 2016.12.13

End Date:

2016.12.14

Last Calib.:

2016.12.14

Start Time: 22:28:02

End Time:

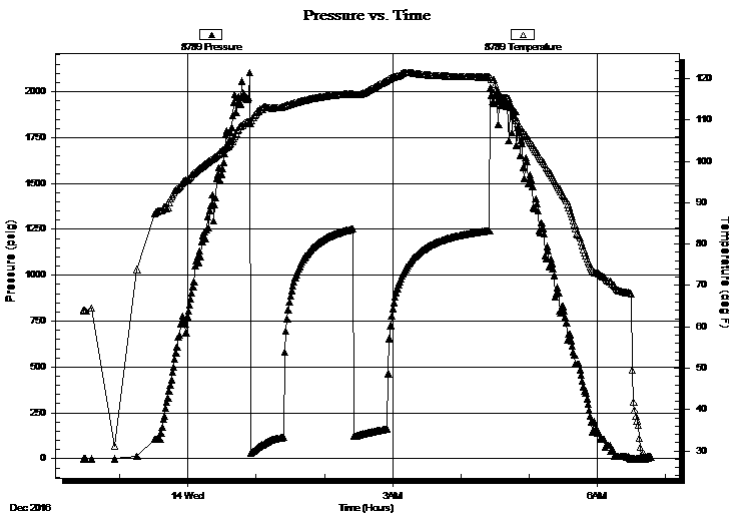
06:47:45

Time On Btm:

Time Off Btm:

**TEST COMMENT:** 30-IFP- BOB in 22min.  
60-ISIP- Weak Surface Blow in 5min. Died in 12min.  
30-FFP- BOB in 28min.  
90-FSIP- No Blow

## PRESSURE SUMMARY



Time (Min.)	Pressure (psig)	Temp (deg F)	Annotation

## Recovery

Length (ft)	Description	Volume (bbl)
187.00	MCW 15%m 85%w	0.92
130.00	WCM 40%w 60%m	1.82

## Gas Rates

	Choke (inches)	Pressure (psig)	Gas Rate (Mcf/d)

\* Recovery from multiple tests



**TRILOBITE  
TESTING, INC.**

# DRILL STEM TEST REPORT

**TOOL DIAGRAM**

Suemaaur Expl. & Prod. LLC

**19 7s 28w Sheridan KS**

539 N Carancahua Ste 1100  
Corpus Christi TX 78401

**Gaede 1-19**

Job Ticket: 61212

**DST#: 2**

ATTN: Bob Peterson

Test Start: 2016.12.13 @ 22:28:00

## Tool Information

Drill Pipe:	Length: 3767.00 ft	Diameter: 3.80 inches	Volume: 52.84 bbl	Tool Weight: 2500.00 lb
Heavy Wt. Pipe:	Length: 0.00 ft	Diameter: 2.75 inches	Volume: 0.00 bbl	Weight set on Packer: 25000.00 lb
Drill Collar:	Length: 187.00 ft	Diameter: 2.25 inches	Volume: 0.92 bbl	Weight to Pull Loose: 55000.00 lb
			<u>Total Volume: 53.76 bbl</u>	Tool Chased 0.00 ft
Drill Pipe Above KB:	26.00 ft			String Weight: Initial 52000.00 lb
Depth to Top Packer:	3956.00 ft			Final 53000.00 lb
Depth to Bottom Packer:	ft			
Interval between Packers:	22.00 ft			
Tool Length:	50.00 ft			
Number of Packers:	2	Diameter: 6.75 inches		

Tool Comments:

## Tool Description

Tool Description	Length (ft)	Serial No.	Position	Depth (ft)	Accum. Lengths
Change Over Sub	1.00			3929.00	
Shut In Tool	5.00			3934.00	
Hydraulic tool	5.00			3939.00	
Jars	5.00			3944.00	
Safety Joint	2.00			3946.00	
Packer	5.00			3951.00	28.00 Bottom Of Top Packer
Packer	5.00			3956.00	
Stubb	1.00			3957.00	
Perforations	3.00			3960.00	
Recorder	0.00	8789	Inside	3960.00	
Recorder	0.00	8372	Outside	3960.00	
Perforations	15.00			3975.00	
Bullnose	3.00			3978.00	22.00 Bottom Packers & Anchor

**Total Tool Length: 50.00**





**TRILOBITE  
TESTING, INC**

# DRILL STEM TEST REPORT

## FLUID SUMMARY

Suemaaur Expl. & Prod. LLC

**19 7s 28w Sheridan KS**

539 N Carancahua Ste 1100  
Corpus Christi TX 78401

**Gaede 1-19**

Job Ticket: 61212

**DST#: 2**

ATTN: Bob Peterson

Test Start: 2016.12.13 @ 22:28:00

### Mud and Cushion Information

Mud Type: Gel Chem

Cushion Type:

Oil API:

deg API

Mud Weight: 9.00 lb/gal

Cushion Length:

ft

Water Salinity:

52000 ppm

Viscosity: 65.00 sec/qt

Cushion Volume:

bbbl

Water Loss: 5.99 in<sup>3</sup>

Gas Cushion Type:

Resistivity: ohm.m

Gas Cushion Pressure:

psig

Salinity: 700.00 ppm

Filter Cake: 6.00 inches

### Recovery Information

Recovery Table

Length ft	Description	Volume bbbl
187.00	MCW 15%m 85%w	0.920
130.00	WCM 40%w 60%m	1.824

Total Length: 317.00 ft

Total Volume: 2.744 bbl

Num Fluid Samples: 0

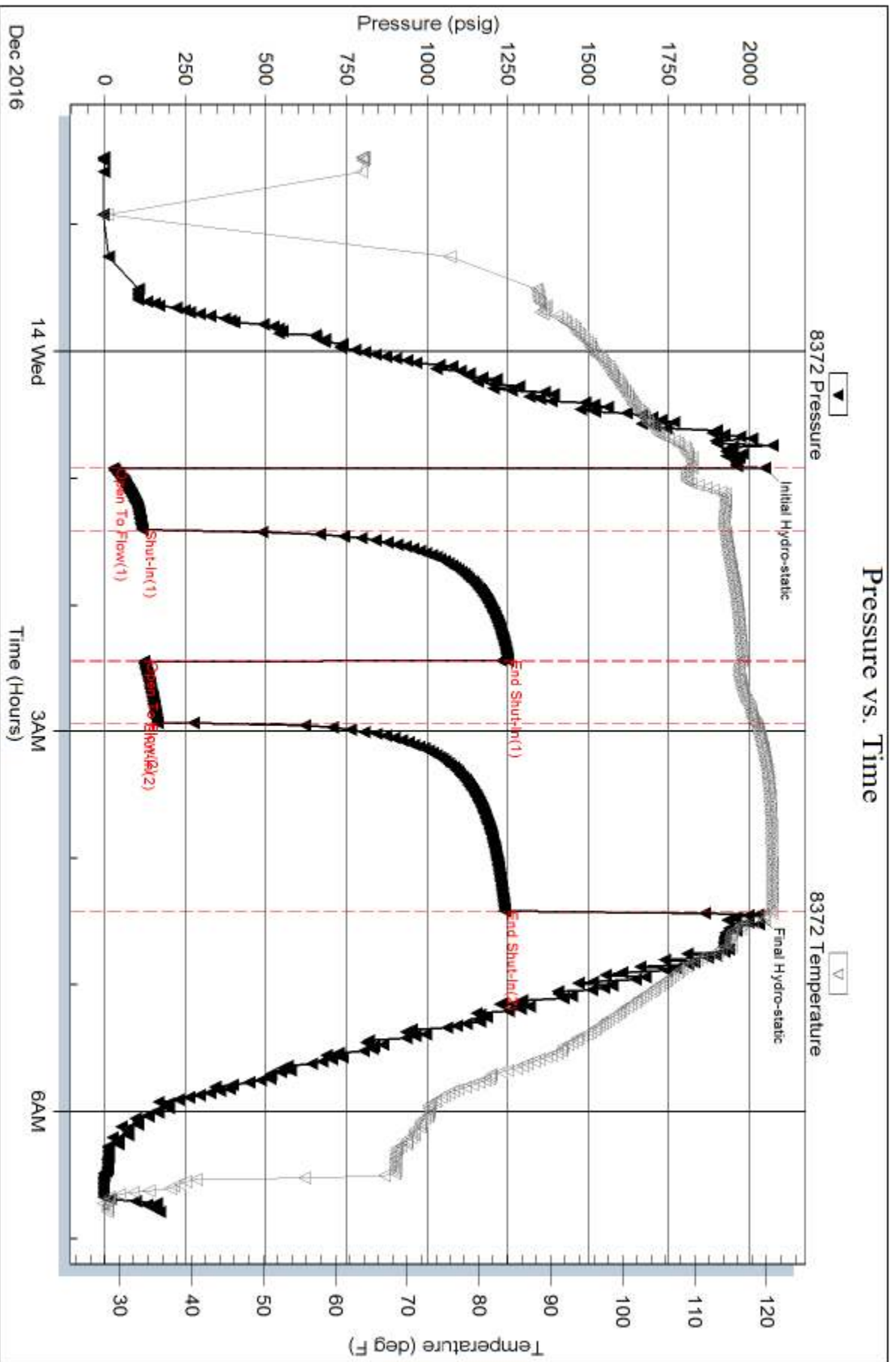
Num Gas Bombs: 0

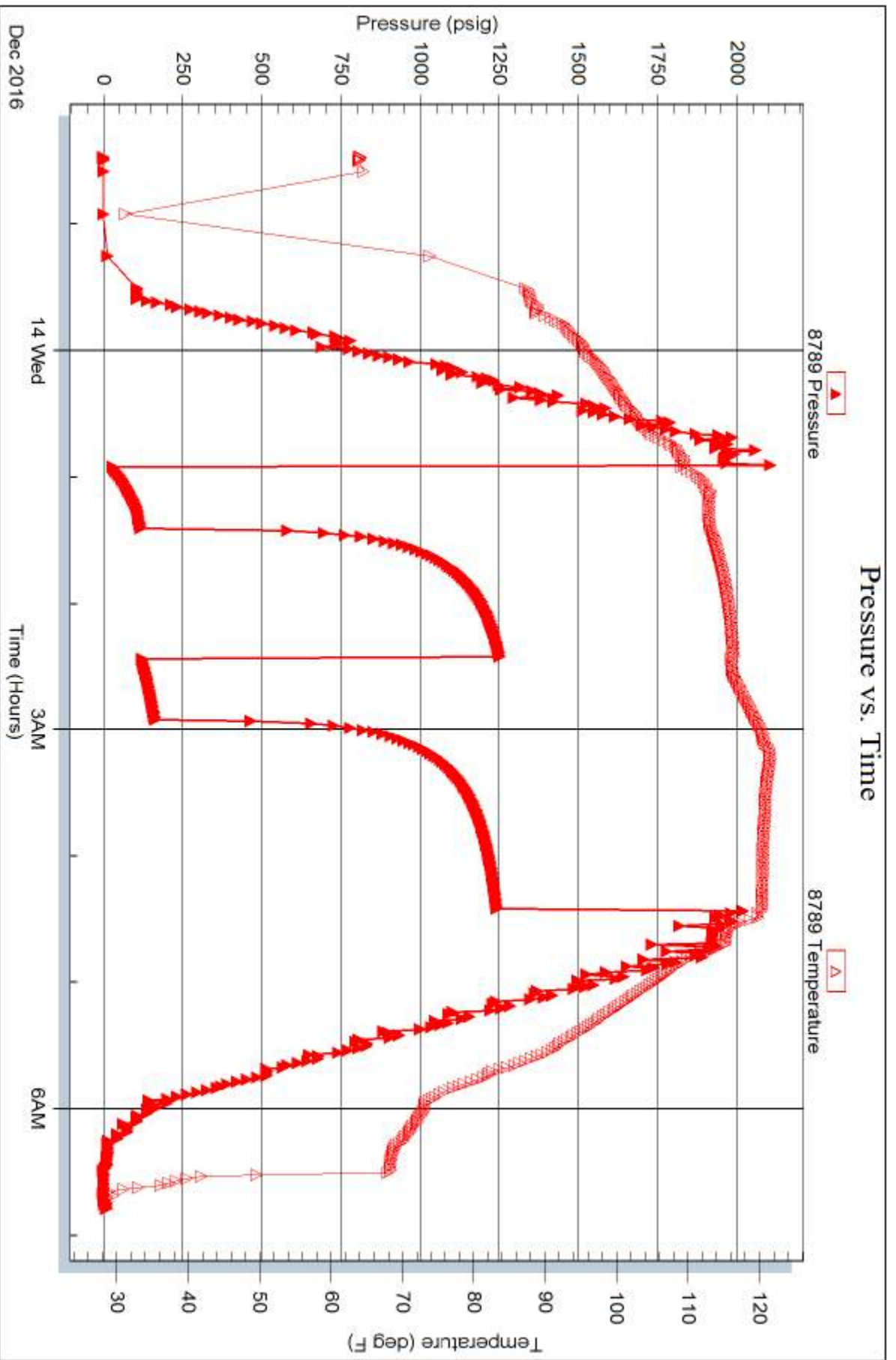
Serial #:

Laboratory Name:

Laboratory Location:

Recovery Comments: .460 @ 22







**TRILOBITE TESTING, INC**

# DRILL STEM TEST REPORT

Suemaour Expl. & Prod. LLC

**19 7s 28w Sheridan KS**

539 N Carancahua Ste 1100  
Corpus Christi TX 78401

**Gaede 1-19**

Job Ticket: 61213

**DST#: 3**

ATTN: Bob Petersen

Test Start: 2016.12.14 @ 19:14:00

## GENERAL INFORMATION:

Formation: **LKC " G "**

Deviated: No Whipstock: ft (KB)

Time Tool Opened: 21:19:45

Time Test Ended: 03:45:00

Test Type: Conventional Bottom Hole (Reset)

Tester: Jim Svaty

Unit No: 76

**Interval: 4017.00 ft (KB) To 4035.00 ft (KB) (TVD)**

Reference Elevations: 2798.00 ft (KB)

Total Depth: 4035.00 ft (KB) (TVD)

2793.00 ft (CF)

Hole Diameter: 7.88 inches Hole Condition: Fair

KB to GR/CF: 5.00 ft

**Serial #: 8372 Outside**

Press@RunDepth: 142.79 psig @ 4019.00 ft (KB)

Capacity: 8000.00 psig

Start Date: 2016.12.14

End Date:

2016.12.15

Last Calib.: 2016.12.15

Start Time: 19:14:02

End Time:

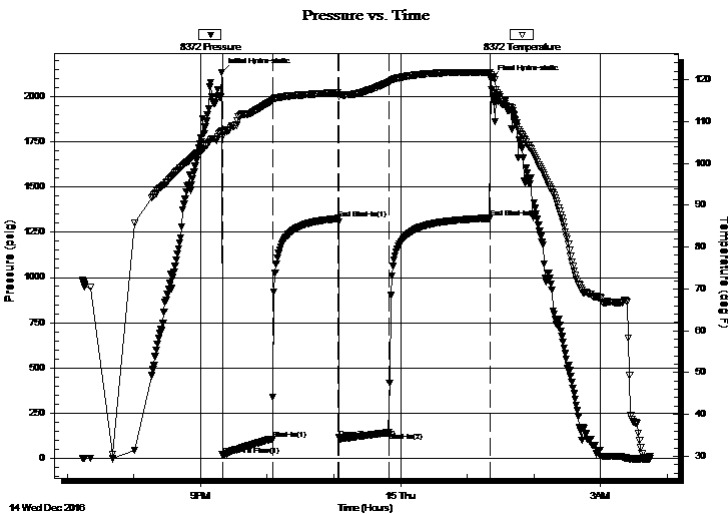
03:45:00

Time On Btm: 2016.12.14 @ 21:19:15

Time Off Btm: 2016.12.15 @ 01:21:15

**TEST COMMENT:** 45-IFP- Surface Blow Building to 9 1/2in.  
60-ISIP- No Blow  
45-FFP- Surface Blow Building to 8in.  
90-FSIP- No Blow

## PRESSURE SUMMARY



Time (Min.)	Pressure (psig)	Temp (deg F)	Annotation
0	2132.75	107.77	Initial Hydro-static
1	20.31	106.31	Open To Flow (1)
46	106.34	115.01	Shut-In(1)
105	1325.52	116.90	End Shut-In(1)
106	113.90	116.06	Open To Flow (2)
151	142.79	119.40	Shut-In(2)
242	1327.58	121.71	End Shut-In(2)
242	2095.67	121.09	Final Hydro-static

## Recovery

Length (ft)	Description	Volume (bbl)
187.00	MCW 10%w 90%w	0.92
80.00	WCM 45%w 55%w	1.12

\* Recovery from multiple tests

## Gas Rates

Choke (inches)	Pressure (psig)	Gas Rate (Mcf/d)



**TRILOBITE TESTING, INC.**

# DRILL STEM TEST REPORT

Suemaour Expl. & Prod. LLC

**19 7s 28w Sheridan KS**

539 N Carancahua Ste 1100  
Corpus Christi TX 78401

**Gaede 1-19**

Job Ticket: 61213

**DST#: 3**

ATTN: Bob Petersen

Test Start: 2016.12.14 @ 19:14:00

## GENERAL INFORMATION:

Formation: **LKC " G "**

Deviated: No Whipstock: ft (KB)

Time Tool Opened: 21:19:45

Time Test Ended: 03:45:00

Test Type: Conventional Bottom Hole (Reset)

Tester: Jim Svaty

Unit No: 76

**Interval: 4017.00 ft (KB) To 4035.00 ft (KB) (TVD)**

Reference Elevations: 2798.00 ft (KB)

Total Depth: 4035.00 ft (KB) (TVD)

2793.00 ft (CF)

Hole Diameter: 7.88 inches Hole Condition: Fair

KB to GR/CF: 5.00 ft

**Serial #: 8789 Inside**

Press@RunDepth: psig @ 4019.00 ft (KB)

Capacity: 8000.00 psig

Start Date: 2016.12.14

End Date:

2016.12.15

Last Calib.:

2016.12.15

Start Time: 19:14:02

End Time:

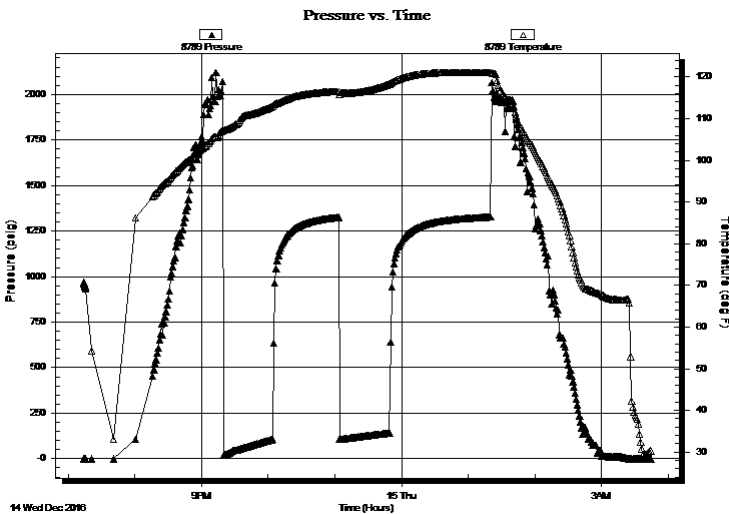
03:44:45

Time On Btm:

Time Off Btm:

**TEST COMMENT:** 45-IFP- Surface Blow Building to 9 1/2in.  
60-ISIP- No Blow  
45-FFP- Surface Blow Building to 8in.  
90-FSIP- No Blow

## PRESSURE SUMMARY



Time (Min.)	Pressure (psig)	Temp (deg F)	Annotation

## Recovery

Length (ft)	Description	Volume (bbl)
187.00	MCW 10% m 90% w	0.92
80.00	WCM 45% w 55% m	1.12

## Gas Rates

Choke (inches)	Pressure (psig)	Gas Rate (Mcf/d)

\* Recovery from multiple tests



**TRILOBITE  
TESTING, INC**

# DRILL STEM TEST REPORT

## FLUID SUMMARY

Suemaaur Expl. & Prod. LLC

**19 7s 28w Sheridan KS**

539 N Carancahua Ste 1100  
Corpus Christi TX 78401

**Gaede 1-19**

Job Ticket: 61213

**DST#: 3**

ATTN: Bob Petersen

Test Start: 2016.12.14 @ 19:14:00

### Mud and Cushion Information

Mud Type: Gel Chem

Cushion Type:

Oil API:

deg API

Mud Weight: 9.00 lb/gal

Cushion Length:

ft

Water Salinity:

80000 ppm

Viscosity: 60.00 sec/qt

Cushion Volume:

bbbl

Water Loss: 6.40 in<sup>3</sup>

Gas Cushion Type:

Resistivity: ohm.m

Gas Cushion Pressure:

psig

Salinity: 1500.00 ppm

Filter Cake: 6.00 inches

### Recovery Information

Recovery Table

Length ft	Description	Volume bbbl
187.00	MCW 10%m 90%w	0.920
80.00	WCM 45%w 55%m	1.122

Total Length: 267.00 ft

Total Volume: 2.042 bbl

Num Fluid Samples: 0

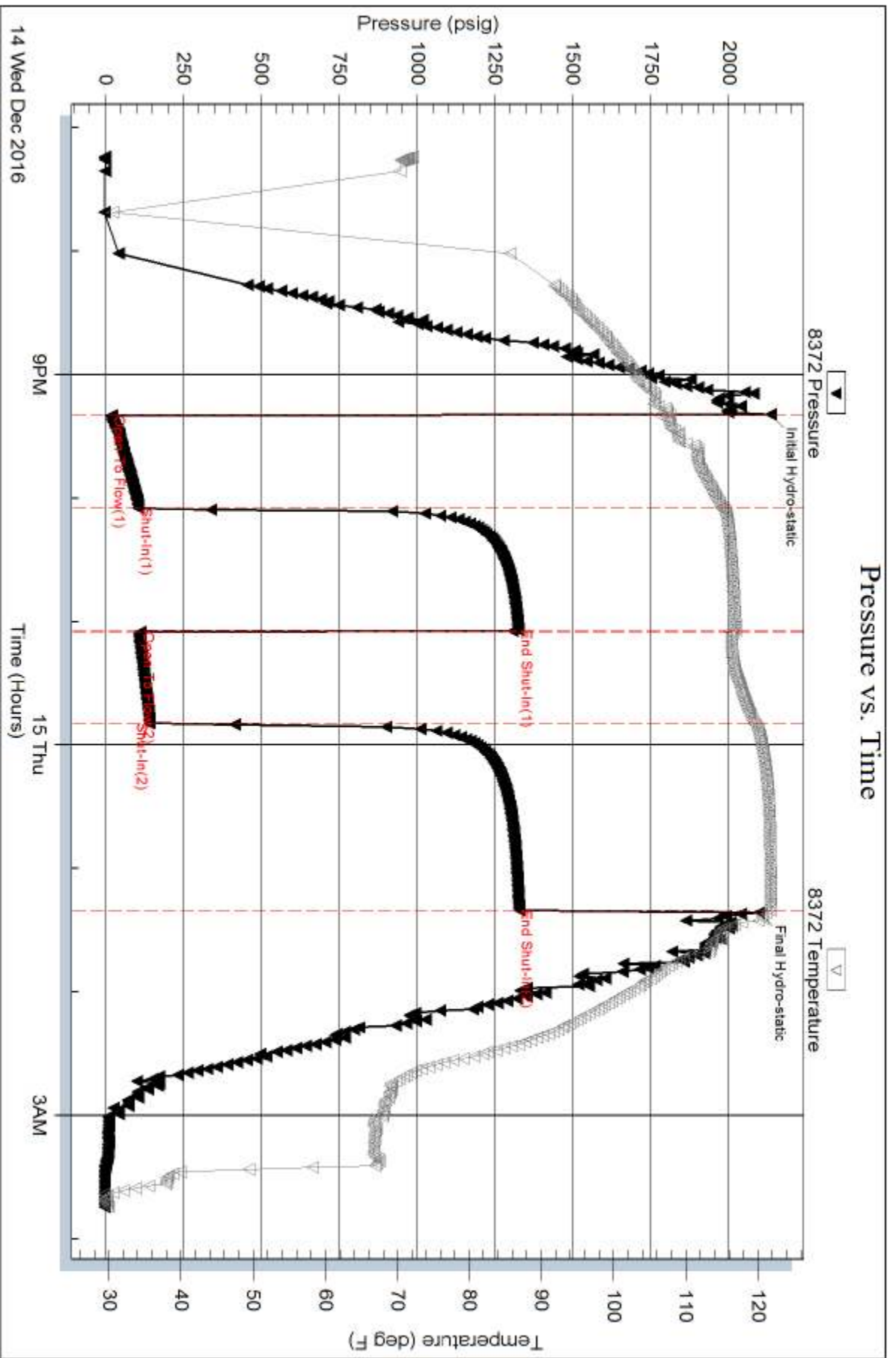
Num Gas Bombs: 0

Serial #:

Laboratory Name:

Laboratory Location:

Recovery Comments: .232 @ 30



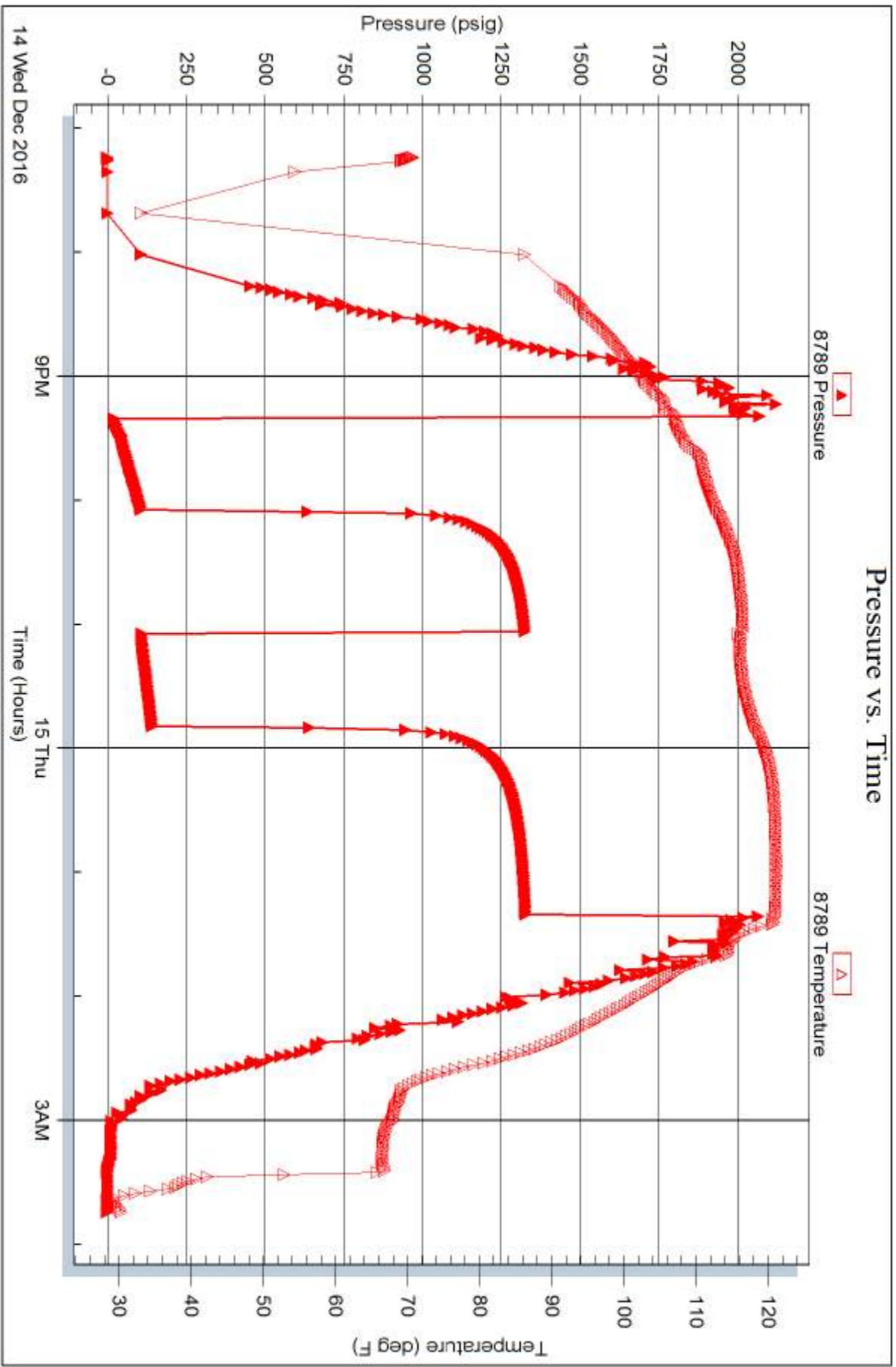
Serial #: 8789

Inside

Suenaux Expl. & Prod. LLC

Gaeede 1-19

DST Test Number: 3



Triobite Testing, Inc

Ref. No: 61213

Printed: 2016.12.15 @ 06:28:20





**TRILOBITE  
TESTING, INC**

# DRILL STEM TEST REPORT

Suemaaur Expl. & Prod. LLC

**19 7s 28w Sheridan KS**

539 N Carancahua Ste 1100  
Corpus Christi TX 78401

**Gaede 1-19**

Job Ticket: 61214

**DST#: 4**

ATTN: Bob Petersen

Test Start: 2016.12.15 @ 13:21:00

## GENERAL INFORMATION:

Formation: **LKC " H "**

Deviated: No Whipstock: ft (KB)

Time Tool Opened: 16:18:30

Time Test Ended: 22:31:00

Test Type: Conventional Bottom Hole (Reset)

Tester: Jim Svaty

Unit No: 76

**Interval: 4068.00 ft (KB) To 4080.00 ft (KB) (TVD)**

Reference Elevations: 2798.00 ft (KB)

Total Depth: 4080.00 ft (KB) (TVD)

2793.00 ft (CF)

Hole Diameter: 7.88 inches Hole Condition: Fair

KB to GR/CF: 5.00 ft

**Serial #: 8372 Outside**

Press@RunDepth: 22.32 psig @ 4069.00 ft (KB)

Capacity: 8000.00 psig

Start Date: 2016.12.15

End Date:

2016.12.15

Last Calib.:

2016.12.15

Start Time:

13:21:02

End Time:

22:31:15

Time On Btm:

2016.12.15 @ 16:18:15

Time Off Btm:

2016.12.15 @ 20:19:00

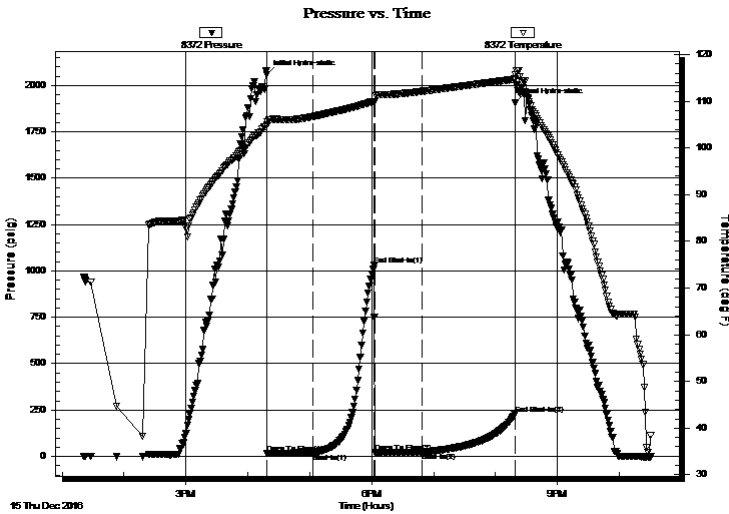
**TEST COMMENT:** 45-IFP- Surface Blow Building to 1 1/2in.

60-ISIP- No Blow

45-FFP- Surface Blow

90-FSIP- No Blow

## PRESSURE SUMMARY



Time (Min.)	Pressure (psig)	Temp (deg F)	Annotation
0	2056.99	104.91	Initial Hydro-static
1	15.83	104.71	Open To Flow (1)
46	18.73	106.72	Shut-In(1)
105	1030.50	109.97	End Shut-In(1)
105	20.84	109.93	Open To Flow (2)
151	22.32	112.10	Shut-In(2)
241	226.54	114.74	End Shut-In(2)
241	1904.69	115.70	Final Hydro-static

## Recovery

Length (ft)	Description	Volume (bbl)
10.00	OCM 5%o 95%m W/ Small Oil Cap	0.05

## Gas Rates

	Choke (inches)	Pressure (psig)	Gas Rate (Mcf/d)

\* Recovery from multiple tests



**TRILOBITE  
TESTING, INC**

# DRILL STEM TEST REPORT

Suemaury Expl. & Prod. LLC

**19 7s 28w Sheridan KS**

539 N Carancahua Ste 1100  
Corpus Christi TX 78401

**Gaede 1-19**

Job Ticket: 61214

**DST#: 4**

ATTN: Bob Petersen

Test Start: 2016.12.15 @ 13:21:00

## GENERAL INFORMATION:

Formation: **LKC " H "**

Deviated: No Whipstock: ft (KB)

Time Tool Opened: 16:18:30

Time Test Ended: 22:31:00

Test Type: Conventional Bottom Hole (Reset)

Tester: Jim Svaty

Unit No: 76

**Interval: 4068.00 ft (KB) To 4080.00 ft (KB) (TVD)**

Reference Elevations: 2798.00 ft (KB)

Total Depth: 4080.00 ft (KB) (TVD)

2793.00 ft (CF)

Hole Diameter: 7.88 inches Hole Condition: Fair

KB to GR/CF: 5.00 ft

**Serial #: 8789 Inside**

Press@RunDepth: psig @ 4069.00 ft (KB)

Capacity: 8000.00 psig

Start Date: 2016.12.15 End Date: 2016.12.15

Last Calib.: 2016.12.15

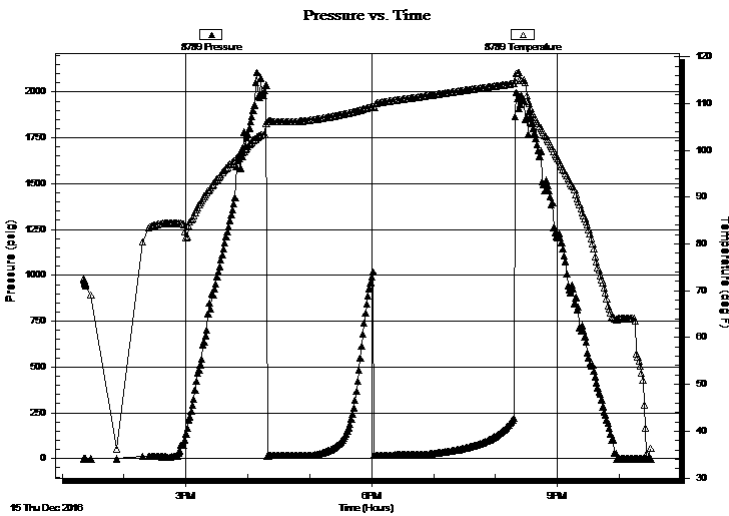
Start Time: 13:21:02 End Time: 22:31:00

Time On Btm:

Time Off Btm:

**TEST COMMENT:** 45-IFP- Surface Blow Building to 1 1/2in.  
60-ISIP- No Blow  
45-FFP- Surface Blow  
90-FSIP- No Blow

## PRESSURE SUMMARY



Time (Min.)	Pressure (psig)	Temp (deg F)	Annotation

## Recovery

Length (ft)	Description	Volume (bbl)
10.00	OCM 5%o 95%m W/ Small Oil Cap	0.05

\* Recovery from multiple tests

## Gas Rates

Choke (inches)	Pressure (psig)	Gas Rate (Mcf/d)



**TRILOBITE  
TESTING, INC**

# DRILL STEM TEST REPORT

## FLUID SUMMARY

Suemaour Expl. & Prod. LLC

**19 7s 28w Sheridan KS**

539 N Carancahua Ste 1100  
Corpus Christi TX 78401

**Gaede 1-19**

Job Ticket: 61214

**DST#: 4**

ATTN: Bob Petersen

Test Start: 2016.12.15 @ 13:21:00

### Mud and Cushion Information

Mud Type: Gel Chem

Cushion Type:

Oil API:

deg API

Mud Weight: 9.00 lb/gal

Cushion Length:

ft

Water Salinity:

ppm

Viscosity: 56.00 sec/qt

Cushion Volume:

bbbl

Water Loss: 6.80 in<sup>3</sup>

Gas Cushion Type:

Resistivity: ohm.m

Gas Cushion Pressure:

psig

Salinity: 1800.00 ppm

Filter Cake: 4.00 inches

### Recovery Information

Recovery Table

Length ft	Description	Volume bbl
10.00	OCM 5%o 95%m W/ Small Oil Cap	0.049

Total Length: 10.00 ft      Total Volume: 0.049 bbl

Num Fluid Samples: 0

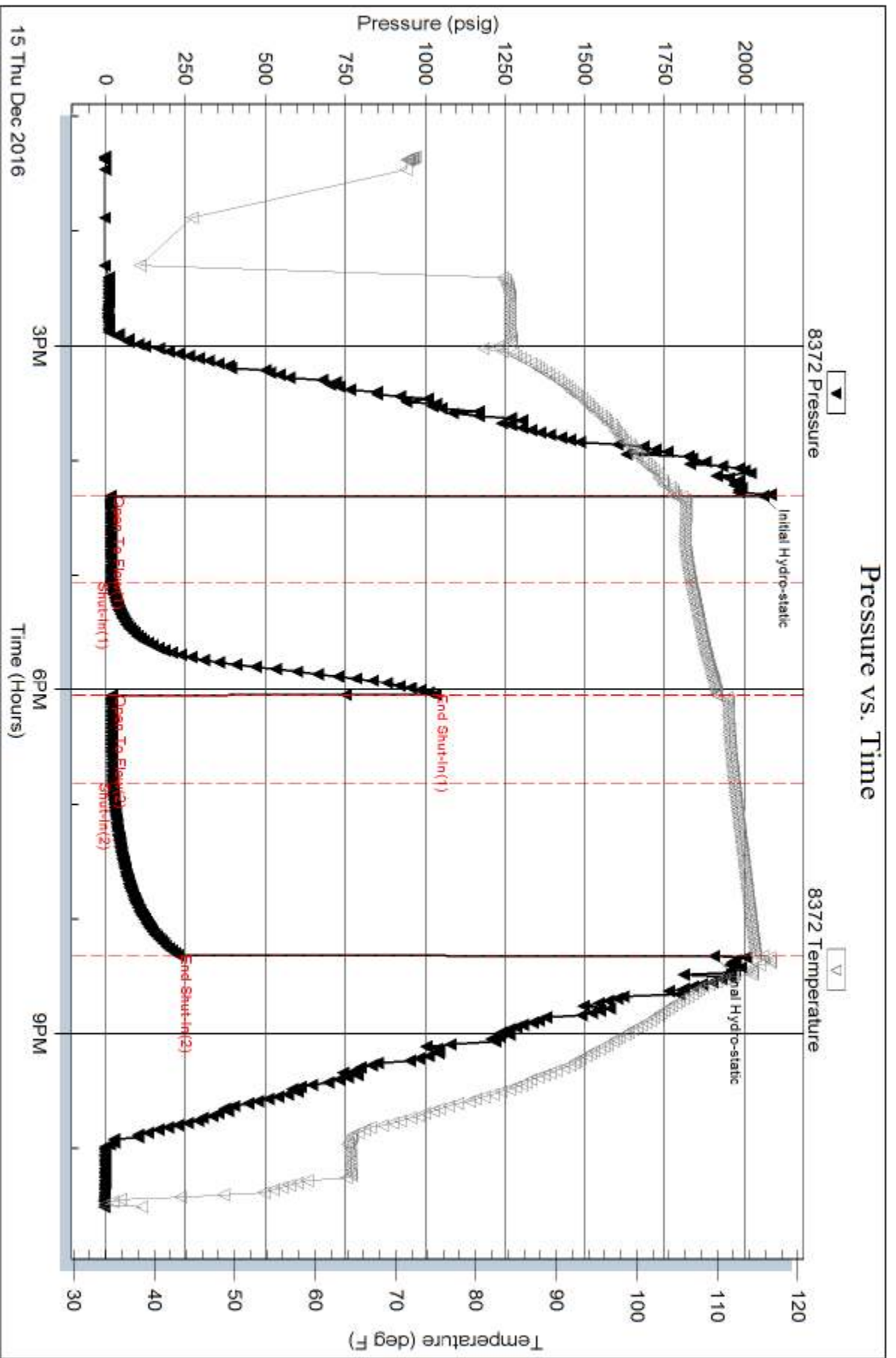
Num Gas Bombs: 0

Serial #:

Laboratory Name:

Laboratory Location:

Recovery Comments:



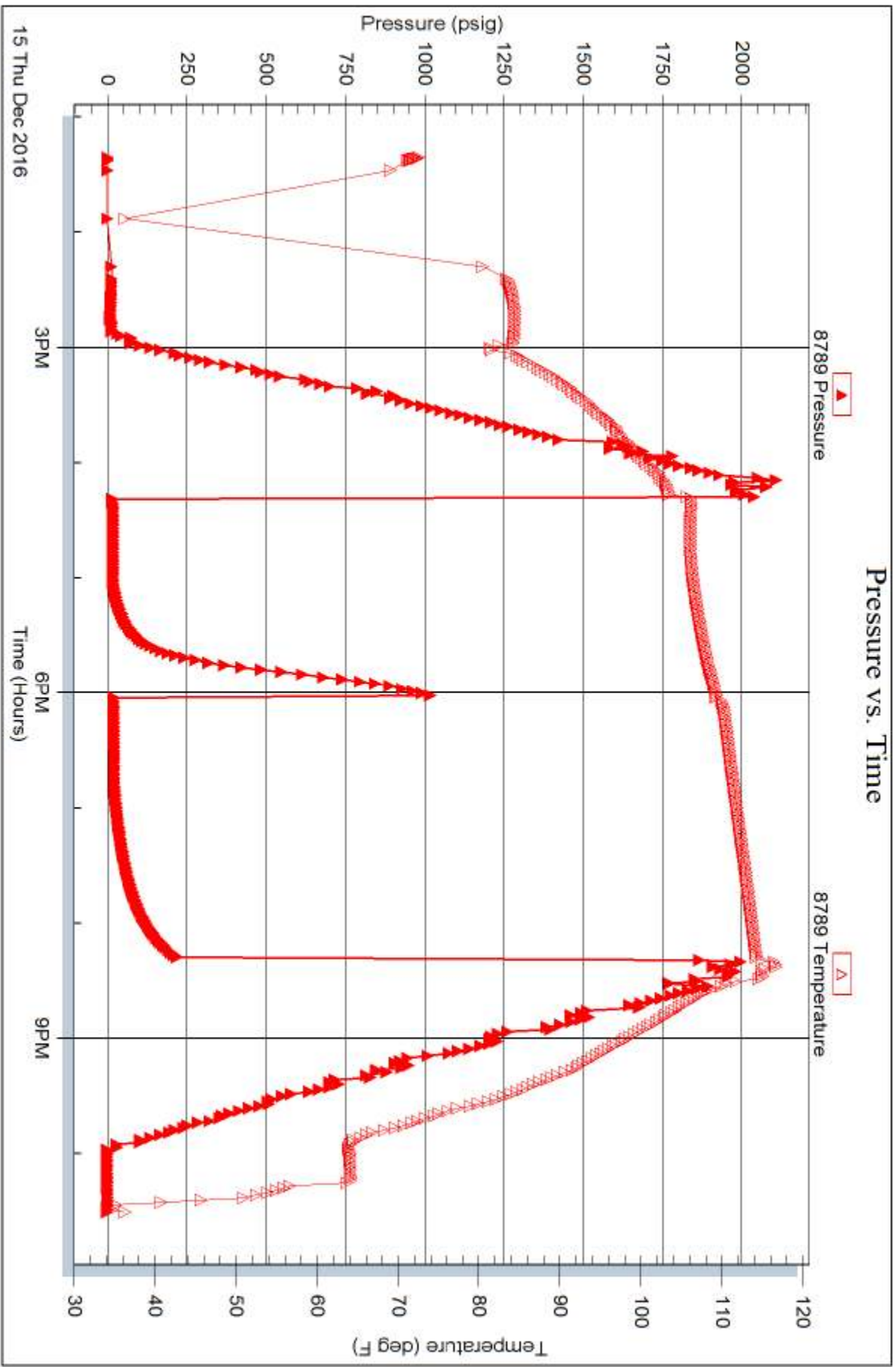
Serial #: 8789

Inside

Suenaar Expl. & Prod. LLC

Gaede 1-19

DST Test Number: 4



Triobite Testing, Inc

Ref. No: 61214

Printed: 2016.12.16 @ 04:48:00



**TRILOBITE TESTING, INC**

# DRILL STEM TEST REPORT

Suemaaur Expl. & Prod. LLC

**19 7s 28w Sheridan KS**

539 N Carancahua Ste 1100  
Corpus Christi TX 78401

**Gaede 1-19**

Job Ticket: 61215

**DST#: 5**

ATTN: Bob Petersen

Test Start: 2016.12.16 @ 07:33:00

## GENERAL INFORMATION:

Formation: **LKC " J "**

Deviated: No Whipstock: ft (KB)

Time Tool Opened: 09:43:45

Time Test Ended: 16:06:00

Test Type: Conventional Bottom Hole (Reset)

Tester: Jim Svaty

Unit No: 76

**Interval: 4083.00 ft (KB) To 4120.00 ft (KB) (TVD)**

Reference Elevations: 2798.00 ft (KB)

Total Depth: 4120.00 ft (KB) (TVD)

2793.00 ft (CF)

Hole Diameter: 7.88 inches Hole Condition: Fair

KB to GR/CF: 5.00 ft

**Serial #: 8372 Outside**

Press@RunDepth: 20.48 psig @ 4087.00 ft (KB)

Capacity: 8000.00 psig

Start Date: 2016.12.16

End Date: 2016.12.16

Last Calib.: 2016.12.16

Start Time: 07:33:02

End Time: 16:06:00

Time On Btm: 2016.12.16 @ 09:43:30

Time Off Btm: 2016.12.16 @ 13:44:45

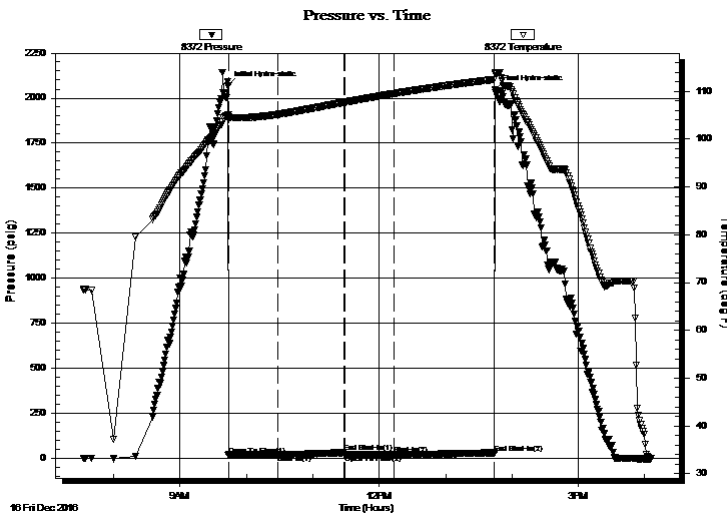
**TEST COMMENT:** 45-IFP- Surface Blow Building to 1in. In 15min. Died Back in 33min.

60-ISIP- No Blow

45-FFP- Weak Surface Blow

90-FSIP- No Blow

## PRESSURE SUMMARY



Time (Min.)	Pressure (psig)	Temp (deg F)	Annotation
0	2069.80	105.08	Initial Hydro-static
1	18.74	104.20	Open To Flow (1)
45	19.85	105.17	Shut-In(1)
105	32.01	107.70	End Shut-In(1)
106	19.62	107.70	Open To Flow (2)
151	20.48	109.53	Shut-In(2)
241	30.68	112.50	End Shut-In(2)
242	2045.27	113.67	Final Hydro-static

## Recovery

Length (ft)	Description	Volume (bbl)
2.00	Oil Speck Mud 100%	0.01

\* Recovery from multiple tests

## Gas Rates

Choke (inches)	Pressure (psig)	Gas Rate (Mcf/d)



**TRILOBITE TESTING, INC**

# DRILL STEM TEST REPORT

Suemaaur Expl. & Prod. LLC

**19 7s 28w Sheridan KS**

539 N Carancahua Ste 1100  
Corpus Christi TX 78401

**Gaede 1-19**

Job Ticket: 61215

**DST#: 5**

ATTN: Bob Petersen

Test Start: 2016.12.16 @ 07:33:00

## GENERAL INFORMATION:

Formation: **LKC " J "**

Deviated: No Whipstock: ft (KB)

Time Tool Opened: 09:43:45

Time Test Ended: 16:06:00

Test Type: Conventional Bottom Hole (Reset)

Tester: Jim Svaty

Unit No: 76

**Interval: 4083.00 ft (KB) To 4120.00 ft (KB) (TVD)**

Reference Elevations: 2798.00 ft (KB)

Total Depth: 4120.00 ft (KB) (TVD)

2793.00 ft (CF)

Hole Diameter: 7.88 inches Hole Condition: Fair

KB to GR/CF: 5.00 ft

**Serial #: 8789 Inside**

Press@RunDepth: psig @ 4087.00 ft (KB)

Capacity: 8000.00 psig

Start Date: 2016.12.16

End Date:

2016.12.16

Last Calib.:

2016.12.16

Start Time: 07:33:02

End Time:

16:05:45

Time On Btm:

Time Off Btm:

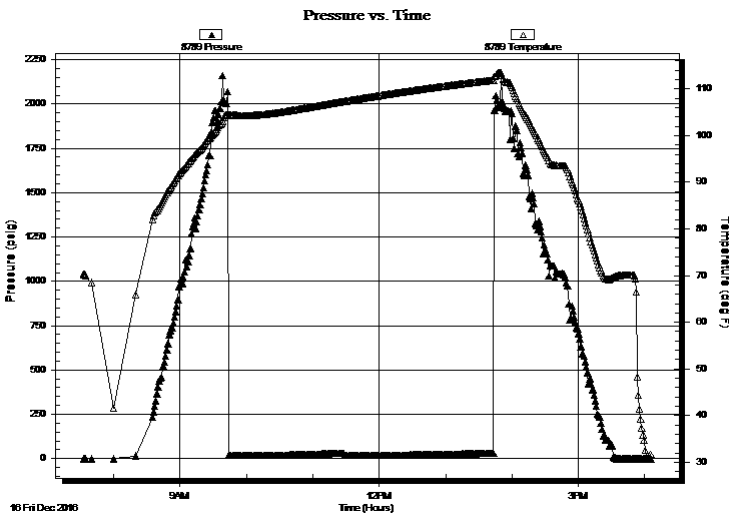
**TEST COMMENT:** 45-IFP- Surface Blow Building to 1in. In 15min. Died Back in 33min.

60-ISIP- No Blow

45-FFP- Weak Surface Blow

90-FSIP- No Blow

## PRESSURE SUMMARY



Time (Min.)	Pressure (psig)	Temp (deg F)	Annotation

## Recovery

Length (ft)	Description	Volume (bbl)
2.00	Oil Speck Mud 100%	0.01

## Gas Rates

Choke (inches)	Pressure (psig)	Gas Rate (Mcf/d)

\* Recovery from multiple tests



**TRILOBITE  
TESTING, INC**

# DRILL STEM TEST REPORT

**TOOL DIAGRAM**

Suemaur Expl. & Prod. LLC

**19 7s 28w Sheridan KS**

539 N Carancahua Ste 1100  
Corpus Christi TX 78401

**Gaede 1-19**

Job Ticket: 61215

**DST#: 5**

ATTN: Bob Petersen

Test Start: 2016.12.16 @ 07:33:00

## Tool Information

Drill Pipe:	Length: 3895.00 ft	Diameter: 3.80 inches	Volume: 54.64 bbl	Tool Weight: 2500.00 lb
Heavy Wt. Pipe:	Length: 0.00 ft	Diameter: 2.75 inches	Volume: 0.00 bbl	Weight set on Packer: 25000.00 lb
Drill Collar:	Length: 187.00 ft	Diameter: 2.25 inches	Volume: 0.92 bbl	Weight to Pull Loose: 55000.00 lb
			<u>Total Volume: 55.56 bbl</u>	Tool Chased 0.00 ft
Drill Pipe Above KB:	27.00 ft			String Weight: Initial 52000.00 lb
Depth to Top Packer:	4083.00 ft			Final 52000.00 lb
Depth to Bottom Packer:	ft			
Interval between Packers:	37.00 ft			
Tool Length:	65.00 ft			
Number of Packers:	2	Diameter: 6.75 inches		

Tool Comments:

## Tool Description

Tool Description	Length (ft)	Serial No.	Position	Depth (ft)	Accum. Lengths
Change Over Sub	1.00			4056.00	
Shut In Tool	5.00			4061.00	
Hydraulic tool	5.00			4066.00	
Jars	5.00			4071.00	
Safety Joint	2.00			4073.00	
Packer	5.00			4078.00	28.00 Bottom Of Top Packer
Packer	5.00			4083.00	
Stubb	1.00			4084.00	
Perforations	3.00			4087.00	
Recorder	0.00	8789	Inside	4087.00	
Recorder	0.00	8372	Outside	4087.00	
Perforations	30.00			4117.00	
Bullnose	3.00			4120.00	37.00 Bottom Packers & Anchor

**Total Tool Length: 65.00**





**TRILOBITE  
TESTING, INC**

# DRILL STEM TEST REPORT

**FLUID SUMMARY**

Suemaour Expl. & Prod. LLC

**19 7s 28w Sheridan KS**

539 N Carancahua Ste 1100  
Corpus Christi TX 78401

**Gaede 1-19**

Job Ticket: 61215

**DST#: 5**

ATTN: Bob Petersen

Test Start: 2016.12.16 @ 07:33:00

## Mud and Cushion Information

Mud Type: Gel Chem

Cushion Type:

Oil API:

deg API

Mud Weight: 9.00 lb/gal

Cushion Length:

ft

Water Salinity:

ppm

Viscosity: 60.00 sec/qt

Cushion Volume:

bbl

Water Loss: 6.00 in<sup>3</sup>

Gas Cushion Type:

Resistivity: ohm.m

Gas Cushion Pressure:

psig

Salinity: 1700.00 ppm

Filter Cake: 6.00 inches

## Recovery Information

Recovery Table

Length ft	Description	Volume bbl
2.00	Oil Speck Mud 100%	0.010

Total Length: 2.00 ft      Total Volume: 0.010 bbl

Num Fluid Samples: 0

Num Gas Bombs: 0

Serial #:

Laboratory Name:

Laboratory Location:

Recovery Comments:

