



DIAMOND TESTING, LLC
P.O. Box 157
HOISINGTON, KANSAS 67544
(620) 653-7550 • (800) 542-7313
PARITY1DST1

Company Raydon Exploration, Inc. Lease & Well No. Parity No. 1-27
Elevation 2738 KB Formation Upper Marmaton Effective Pay Ft. Ticket No. F446
Date 10-9-16 Sec. 27 Twp. 33S Range 31W County Seward State Kansas
Test Approved By Edwin H. Grieves Diamond Representative Jake Fahrenbruch

Formation Test No. 1 Interval Tested from 5,115 ft. to 5,125 ft. Total Depth 5,125 ft
Packer Depth 5,110 ft. Size 6 3/4 in. Packer Depth ft. Size in.
Packer Depth 5,115 ft. Size 6 3/4 in. Packer Depth ft. Size in.
Depth of Selective Zone Set ft.

Top Recorder Depth (Inside) 5,117 ft. Recorder Number 5951 Cap. 5,000 psi.
Bottom Recorder Depth (Outside) 5,118 ft. Recorder Number 5584 Cap. 5,000 psi.
Below Straddle Recorder Depth ft. Recorder Number Cap. psi.

Drilling Contractor Quest Drilling Services, LLC - Rig 102 Drill Collar Length 264 ft I.D. 2 1/4 in.
Mud Type Chemical Viscosity 58 Weight Pipe Length ft I.D. in.
Weight 8.8 Water Loss 5.6 cc. Drill Pipe Length 4,823 ft I.D. 3 1/2 in.
Chlorides 2,000 P.P.M. Test Tool Length 28 ft Tool Size 3 1/2-IF in.
Jars: Make Sterling Serial Number 5 Anchor Length 10 ft. Size 4 1/2-FH in.
Did Well Flow? No Reversed Out No Surface Choke Size 1 in. Bottom Choke Size 5/8 in.
Main Hole Size 7 7/8 in. Tool Joint Size 4 1/2-XH in.

Blow: 1st Open: Weak blow increasing to 6 ins. No blow back during shut-in.
2nd Open: Weak blow increasing to 9 ins. No blow back during shut-in.

Recovered 20 ft. of oil specked, watery mud = .247360 bbls. (Grind out: 3%-oil; 27%-water; 70%-mud)
Recovered 260 ft. of salt water = 1.279200 bbls. (Grind out: 100%-water) Chlorides: 124,000 Ppm PH: 7.0 RW: .08 @ 60°
Recovered 280 ft. of TOTAL FLUID = 1.526560 bbls.
Recovered ft. of
Recovered ft. of
Recovered ft. of

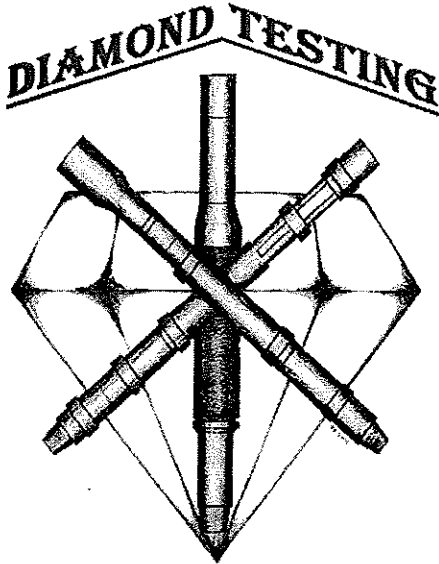
Remarks

Time Set Packer(s) 10:55 P.M. Time Started off Bottom 3:25 A.M. Maximum Temperature 127°
Initial Hydrostatic Pressure.....(A) 2404 P.S.I.
Initial Flow Period.....Minutes 30 (B) 34 P.S.I. to (C) 106 P.S.I.
Initial Closed In Period.....Minutes 60 (D) 1535 P.S.I.
Final Flow Period.....Minutes 60 (E) 110 P.S.I. to (F) 182 P.S.I.
Final Closed In Period.....Minutes 120 (G) 1543 P.S.I.
Final Hydrostatic Pressure.....(H) 2390 P.S.I.

DIAMOND TESTING GENERAL REPORT

Jake Fahrenbruch, Tester

Cell: (620) 282-8977 / Office: (800) 542-7313



TEST INFORMATION

Well Name	Parity #1-27
Company Name	Raydon Exploration, Inc.
Formation	DST #1, Upper Marmaton 5115'-5125'
Test Type	Bottom-Hole w/J,SJ,ShPlr
Surface Location	Sec 27-33s-31w-Seward Co.-KS
KB Elevation (SL)	2738.000
Gauge Name	5951
Start Test Date	2016/10/09
Start Test Time	20:21:00
Final Test Date	2016/10/10
Final Test Time	07:11:00
Job Number	F446
Contact	Myron Heston
Site Contact	Ed Grieves

TEST RESULTS

Initial flow, weak blow increased to 6". No blowback.
 Final flow, weak blow increased to 9". No blowback.

TOTAL RECOVERED FLUID: 280'

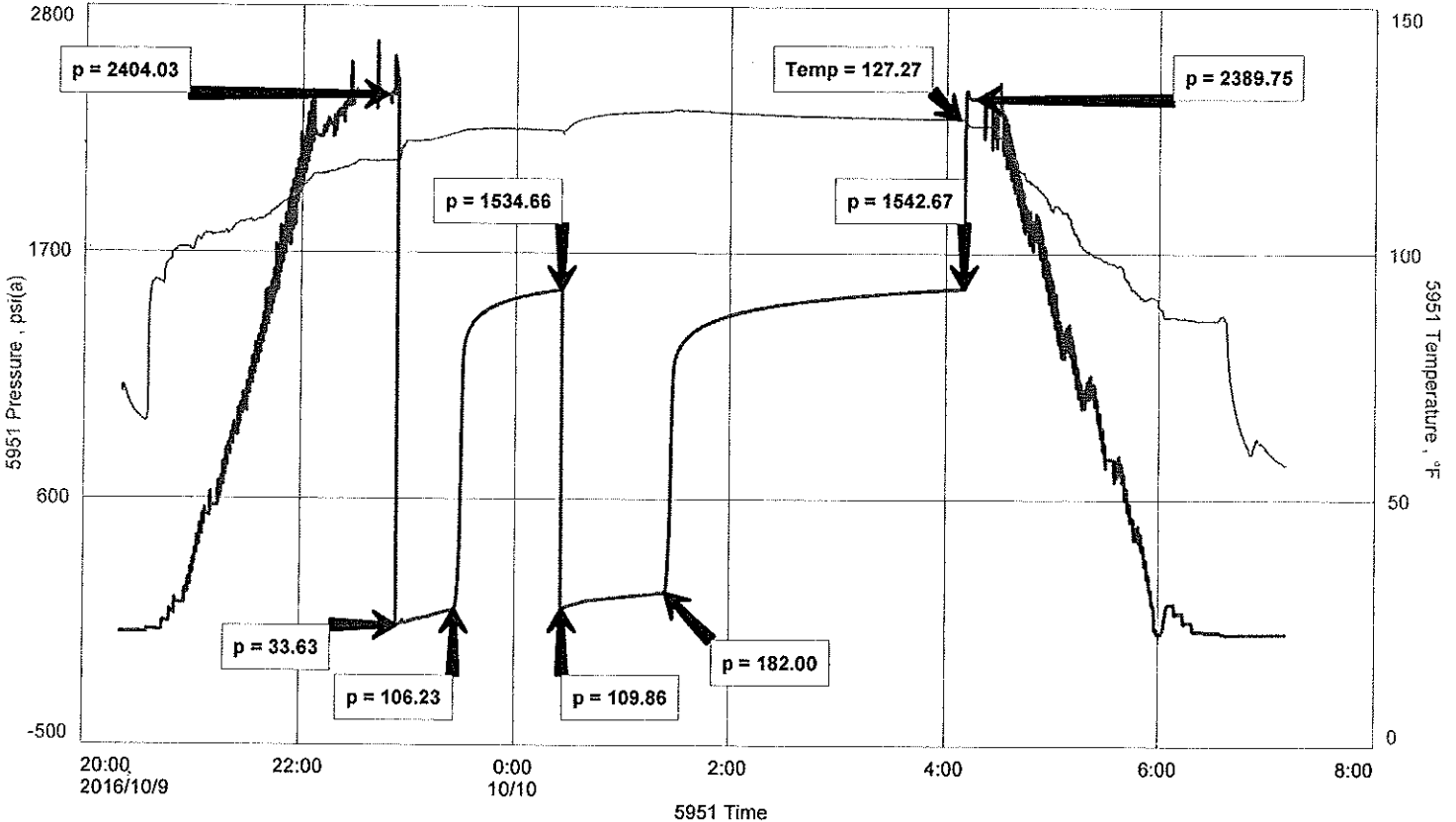
20' OSWM 3% oil, 27% wtr, 70% mud
 260' Salt Water 100% wtr

----- Chlorides: 124,000 PPM ----- PH: 7.0 ----- RW: .08 @ 60 Deg F -----

Raydon Exploration, Inc.
 DST #1 Upper Marmaton 5115'-5125'
 Start Test Date: 2016/10/09
 Final Test Date: 2016/10/10

Parity #1-27
 Formation: Upper Marmaton 5115'-5125'
 Pool: WILDCAT
 Job Number: F446

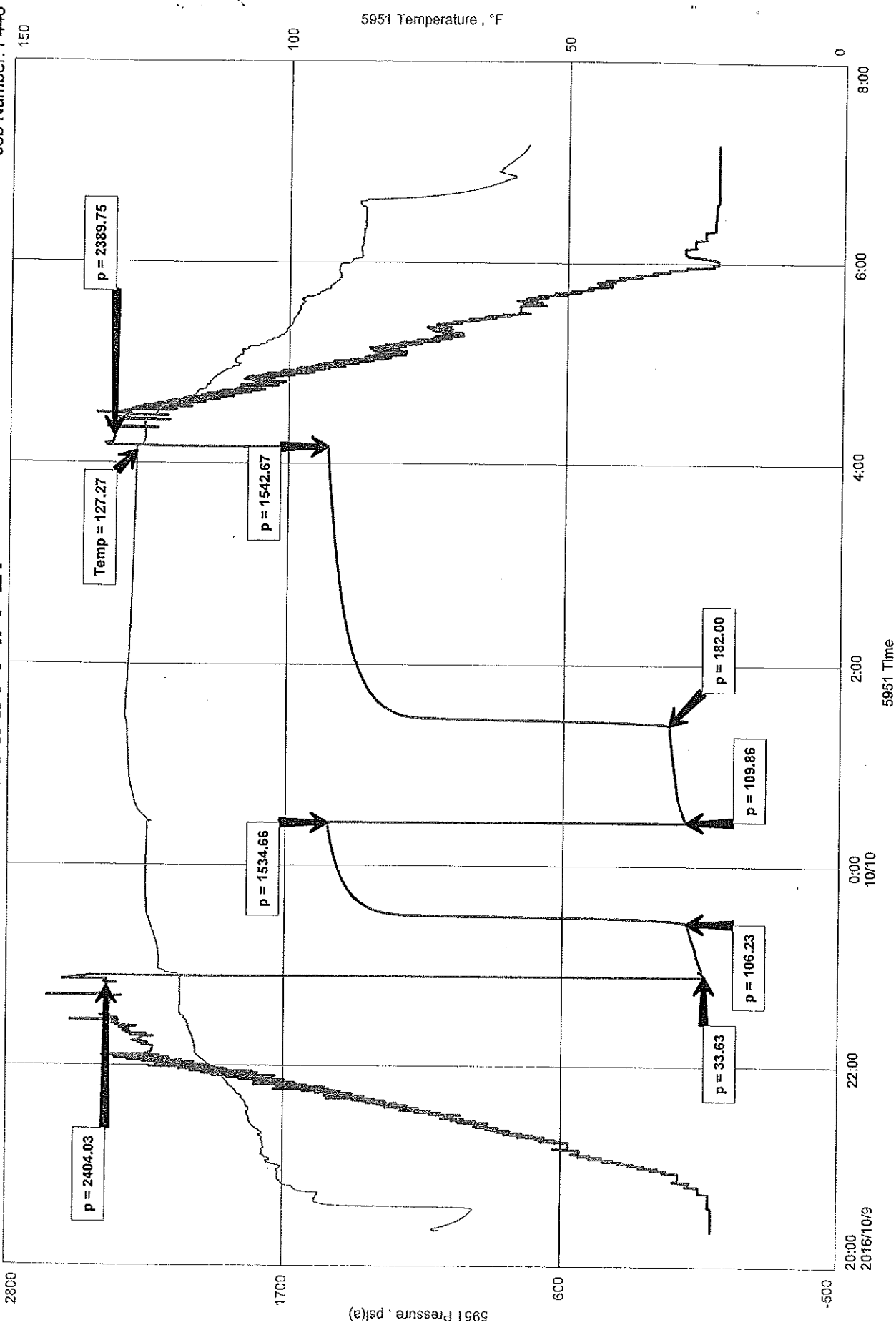
PARITY #1-27



Raydon Exploration, Inc.
DST #1 Upper Marmaton 51115'-5125'
Start Test Date: 2016/10/09
Final Test Date: 2016/10/10

Parity #1-27
Formation: Upper Marmaton 51115'-5125'
Pool: WILDCAT
Job Number: F446

PARITY #1-27





DIAMOND TESTING, LLC
P.O. Box 157
HOISINGTON, KANSAS 67544
(620) 653-7550 • (800) 542-7313
PARITY1DST2

Company Raydon Exploration, Inc. Lease & Well No. Parity No. 1-27
Elevation 2738 KB Formation 2nd Marmaton Effective Pay Ft. Ticket No. F447
Date 10-10-16 Sec. 27 Twp. 33S Range 31W County Seward State Kansas
Test Approved By Edwin H. Grieves Diamond Representative Jake Fahrenbruch

Formation Test No. 2 Interval Tested from 5,133 ft. to 5,143 ft. Total Depth 5,143 ft.
Packer Depth 5,128 ft. Size 6 3/4 in. Packer Depth ft. Size in.
Packer Depth 5,133 ft. Size 6 3/4 in. Packer Depth ft. Size in.
Depth of Selective Zone Set ft.

Top Recorder Depth (Inside) 5,135 ft. Recorder Number 5951 Cap. 5,000 psi.
Bottom Recorder Depth (Outside) 5,136 ft. Recorder Number 5584 Cap. 5,000 psi.
Below Straddle Recorder Depth ft. Recorder Number Cap. psi.

Drilling Contractor Quest Drilling Services, LLC - Rig 102 Drill Collar Length 264 ft I.D. 2 1/4 in.
Mud Type Chemical Viscosity 68 Weight Pipe Length ft I.D. in.
Weight 8.8 Water Loss 6.8 cc. Drill Pipe Length 4,841 ft I.D. 3 1/2 in.
Chlorides 2,500 P.P.M. Test Tool Length 28 ft Tool Size 3 1/2-IF in.
Jars: Make Sterling Serial Number 5 Anchor Length 10 ft. Size 4 1/2-FH in.
Did Well Flow? No Reversed Out No Surface Choke Size 1 in. Bottom Choke Size 5/8 in.
Main Hole Size 7 7/8 in. Tool Joint Size 4 1/2-XH in.

Blow: 1st Open: Weak blow increasing to 3 1/4 ins. No blow back during shut-in.
2nd Open: Weak blow increasing to 3 1/2 ins. No blow back during shut-in.

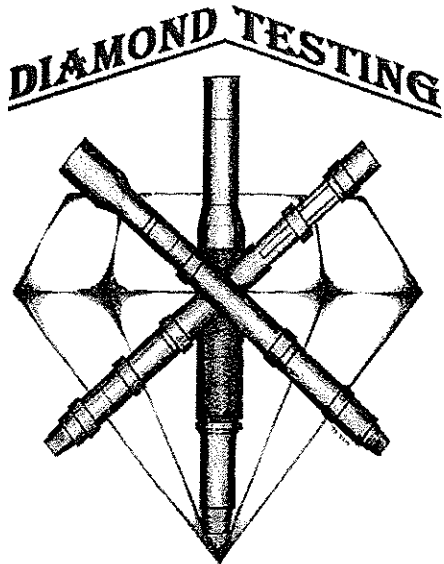
Recovered 265 ft. of salt water = 1.313110 bbls. (Grind out: 100%-water) Chlorides: 85,000 Ppm PH: 8.0 RW: .10 @ 65°
Recovered ft. of
Recovered ft. of
Recovered ft. of
Recovered ft. of
Recovered ft. of
Remarks

Time Set Packer(s) 7:00 P.M. Time Started off Bottom 11:30 P.M. Maximum Temperature 128°
Initial Hydrostatic Pressure.....(A) 2521 P.S.I.
Initial Flow Period.....Minutes 30 (B) 25 P.S.I. to (C) 71 P.S.I.
Initial Closed In Period.....Minutes 60 (D) 1544 P.S.I.
Final Flow Period.....Minutes 60 (E) 74 P.S.I. to (F) 151 P.S.I.
Final Closed In Period.....Minutes 120 (G) 1542 P.S.I.
Final Hydrostatic Pressure.....(H) 2516 P.S.I.

DIAMOND TESTING GENERAL REPORT

Jake Fahrenbruch, Tester

Cell: (620) 282-8977 / Office: (800) 542-7313



TEST INFORMATION

Well Name	Parity #1-27
Company Name	Raydon Exploration, Inc.
Formation	DST #2, 2nd Marmaton 5133'-5143'
Test Type	Bottom-Hole w/J,SJ,ShPkr
Surface Location	Sec 27-33s-31w-Seward Co.-KS
KB Elevation (SL)	2738.000
Gauge Name	5951
Start Test Date	2016/10/10
Start Test Time	16:53:00
Final Test Date	2016/10/11
Final Test Time	02:49:00
Job Number	F447
Contact	Myron Heston
Site Contact	Ed Grieves

TEST RESULTS

Initial flow, weak blow increased to 3.25". No blowback.
 Final flow, weak blow increased to 3.5". No blowback.

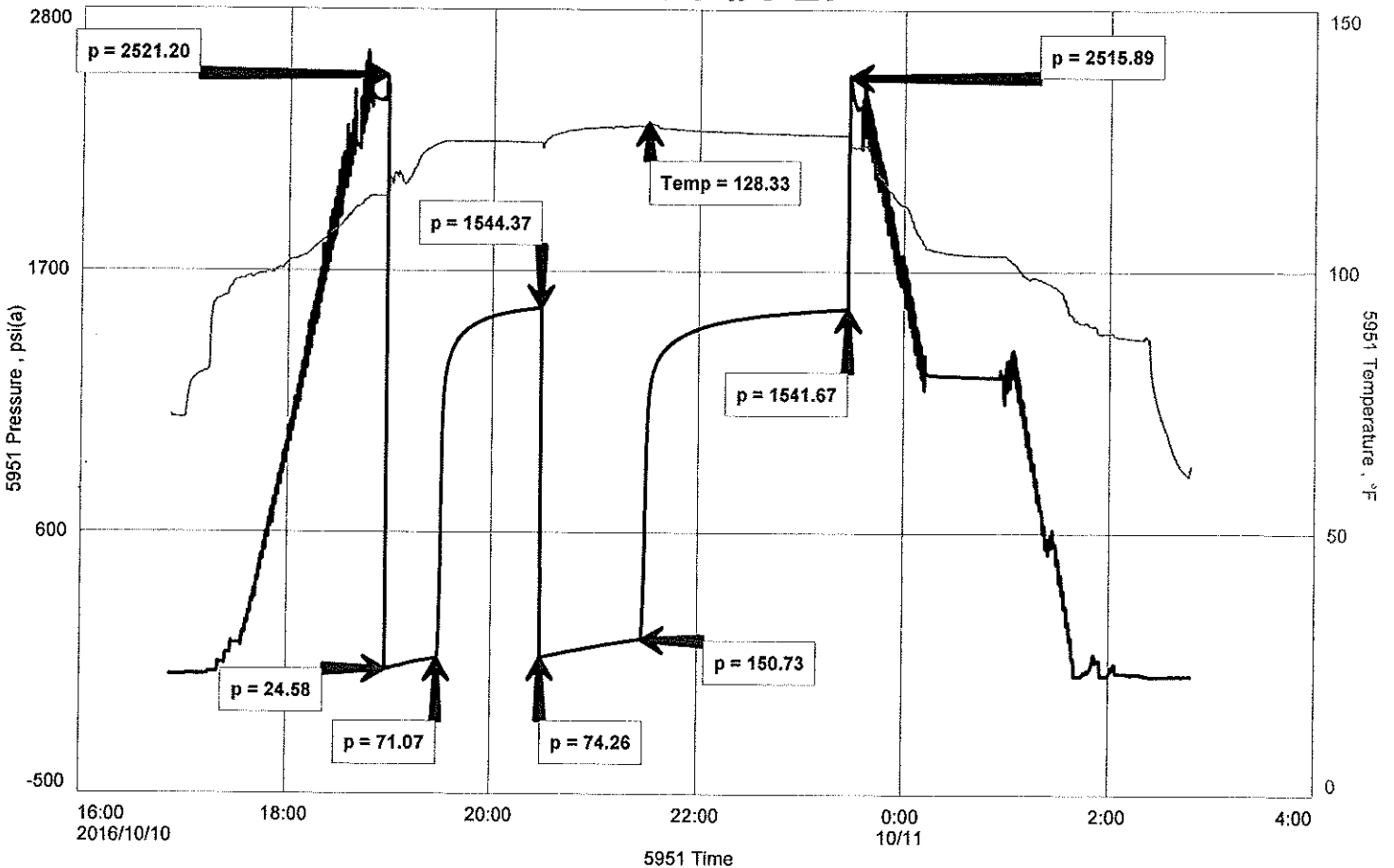
Recovered 265' of salt water.

----- Chlorides: 85,000 PPM ----- PH: 8.0 ----- RW: .08 @ 60 Deg F -----

Raydon Exploration, Inc.
 DST #2 2nd Marmaton 5133'-5143'
 Start Test Date: 2016/10/10
 Final Test Date: 2016/10/11

Parity #1-27
 Formation: 2nd Marmaton 5133'-5143'
 Pool: WILDCAT
 Job Number: F447

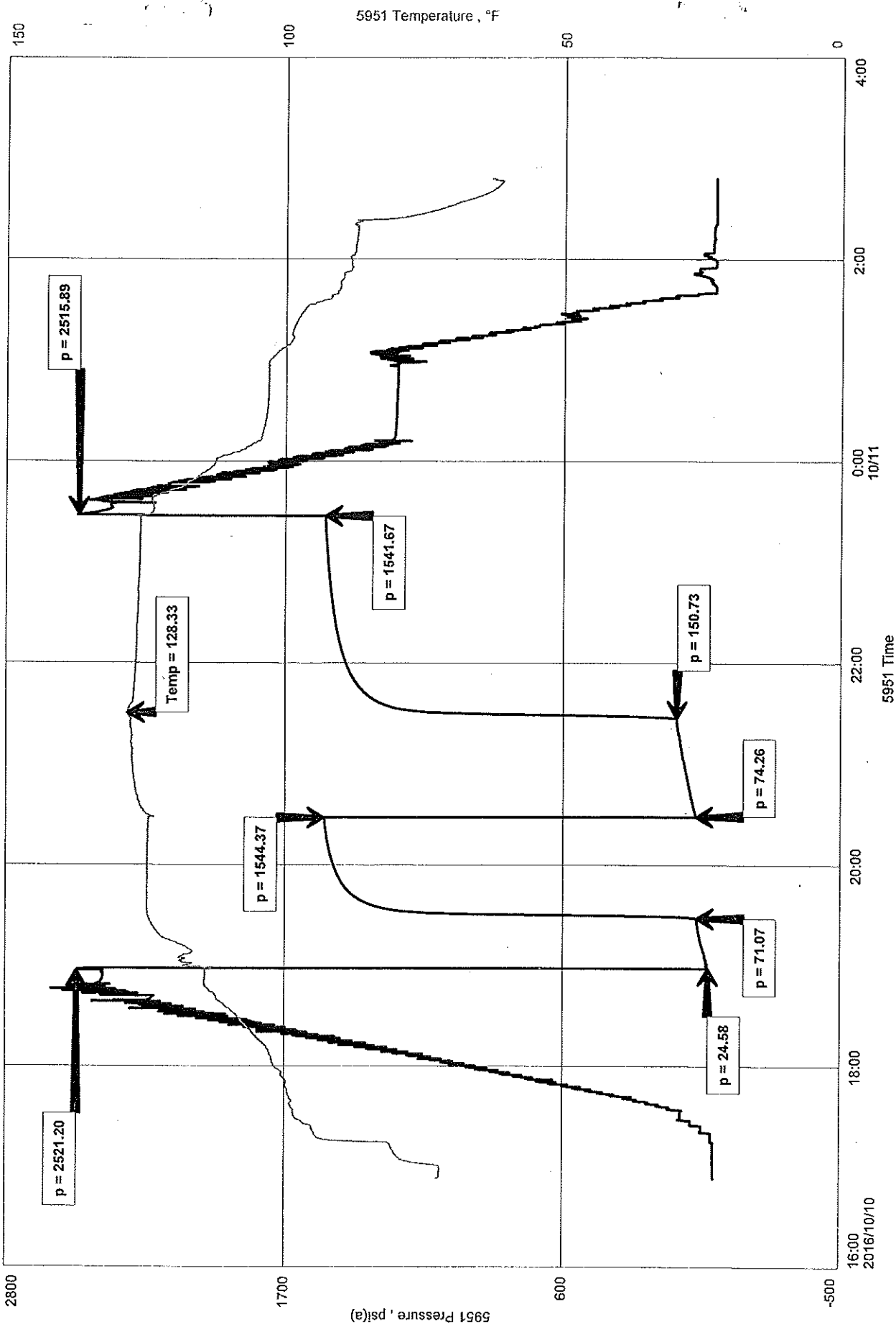
PARITY #1-27



Raydon Exploration, Inc.
DST #2 2nd Marmaton 5133'-5143'
Start Test Date: 2016/10/10
Final Test Date: 2016/10/11

Parity #1-27
Formation: 2nd Marmaton 5133'-5143'
Pool: WILDCAT
Job Number: F447

PARITY #1-27





DIAMOND TESTING, LLC
P.O. Box 157
HOISINGTON, KANSAS 67544
(620) 653-7550 • (800) 542-7313
PARITY1DST3

Company Raydon Exploration, Inc. Lease & Well No. Parity No. 1-27
Elevation 2738 KB Formation Morrow Effective Pay Ft. Ticket No. F448
Date 10-13-16 Sec. 27 Twp. 33S Range 31W County Seward State Kansas
Test Approved By Edwin H. Grieves Diamond Representative Jake Fahrenbruch

Formation Test No. 3 Interval Tested from 5,647 ft. to 5,700 ft. Total Depth 5,700 ft.
Packer Depth 5,642 ft. Size 6 3/4 in. Packer Depth ft. Size in.
Packer Depth 5,647 ft. Size 6 3/4 in. Packer Depth ft. Size in.
Depth of Selective Zone Set ft.

Top Recorder Depth (Inside) 5,654 ft. Recorder Number 5951 Cap. 5,000 psi.
Bottom Recorder Depth (Outside) 5,655 ft. Recorder Number 5584 Cap. 5,000 psi.
Below Straddle Recorder Depth ft. Recorder Number Cap. psi.

Drilling Contractor Quest Drilling Services, LLC - Rig 102 Drill Collar Length 264 ft I.D. 2 1/4 in.
Mud Type Chemical Viscosity 62 Weight Pipe Length ft I.D. in.
Weight 8.8 Water Loss 5.2 cc. Drill Pipe Length 5,355 ft I.D. 3 1/2 in.
Chlorides 2,000 P.P.M. Test Tool Length 28 ft Tool Size 3 1/2-IF in.
Jars: Make Sterling Serial Number 5 Anchor Length 22' perf. w/31' drill pipe Size 4 1/2-FH in.
Did Well Flow? No Reversed Out No Surface Choke Size 1 in. Bottom Choke Size 5/8 in.
Main Hole Size 7 7/8 in. Tool Joint Size 4 1/2-XH in.

Blow: 1st Open: Weak, surface blow. No blow back during shut-in.
2nd Open: No blow. No blow back during shut-in.

Recovered 10 ft. of drilling mud = .049200 bbls. (Grind out: 100%-mud)
Recovered ft. of
Recovered ft. of
Recovered ft. of
Recovered ft. of
Recovered ft. of

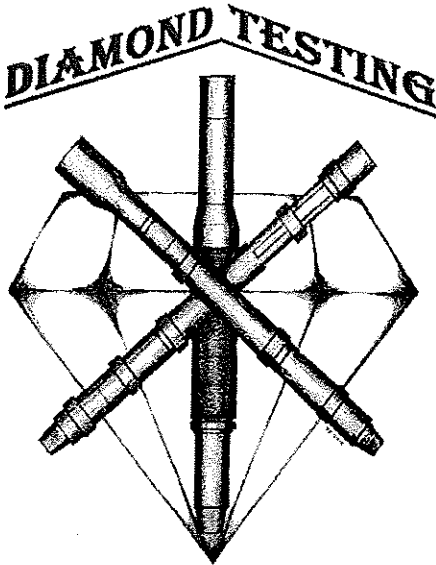
Remarks

Time Set Packer(s) 11:56 P.M. Time Started off Bottom 3:56 A.M. Maximum Temperature 128°
Initial Hydrostatic Pressure.....(A) 2672 P.S.I.
Initial Flow Period.....Minutes 30 (B) 32 P.S.I. to (C) 33 P.S.I.
Initial Closed In Period.....Minutes 60 (D) 50 P.S.I.
Final Flow Period.....Minutes 30 (E) 33 P.S.I. to (F) 36 P.S.I.
Final Closed In Period.....Minutes 120 (G) 50 P.S.I.
Final Hydrostatic Pressure.....(H) 2669 P.S.I.

DIAMOND TESTING GENERAL REPORT

Jake Fahrenbruch, Tester

Cell: (620) 282-8977 / Office: (800) 542-7313



TEST INFORMATION

Well Name	Parity #1-27
Company Name	Raydon Exploration, Inc.
Formation	DST #3, Morrow 5647'-5700'
Test Type	Bottom-Hole w/J,SJ,ShPkr
Surface Location	Sec 27-33s-31w-Seward Co.-KS
KB Elevation (SL)	2738.000
Gauge Name	5951
Start Test Date	2016/10/13
Start Test Time	21:21:00
Final Test Date	2016/10/14
Final Test Time	07:01:00
Job Number	F448
Contact	Myron Heston
Site Contact	Ed Grieves

TEST RESULTS

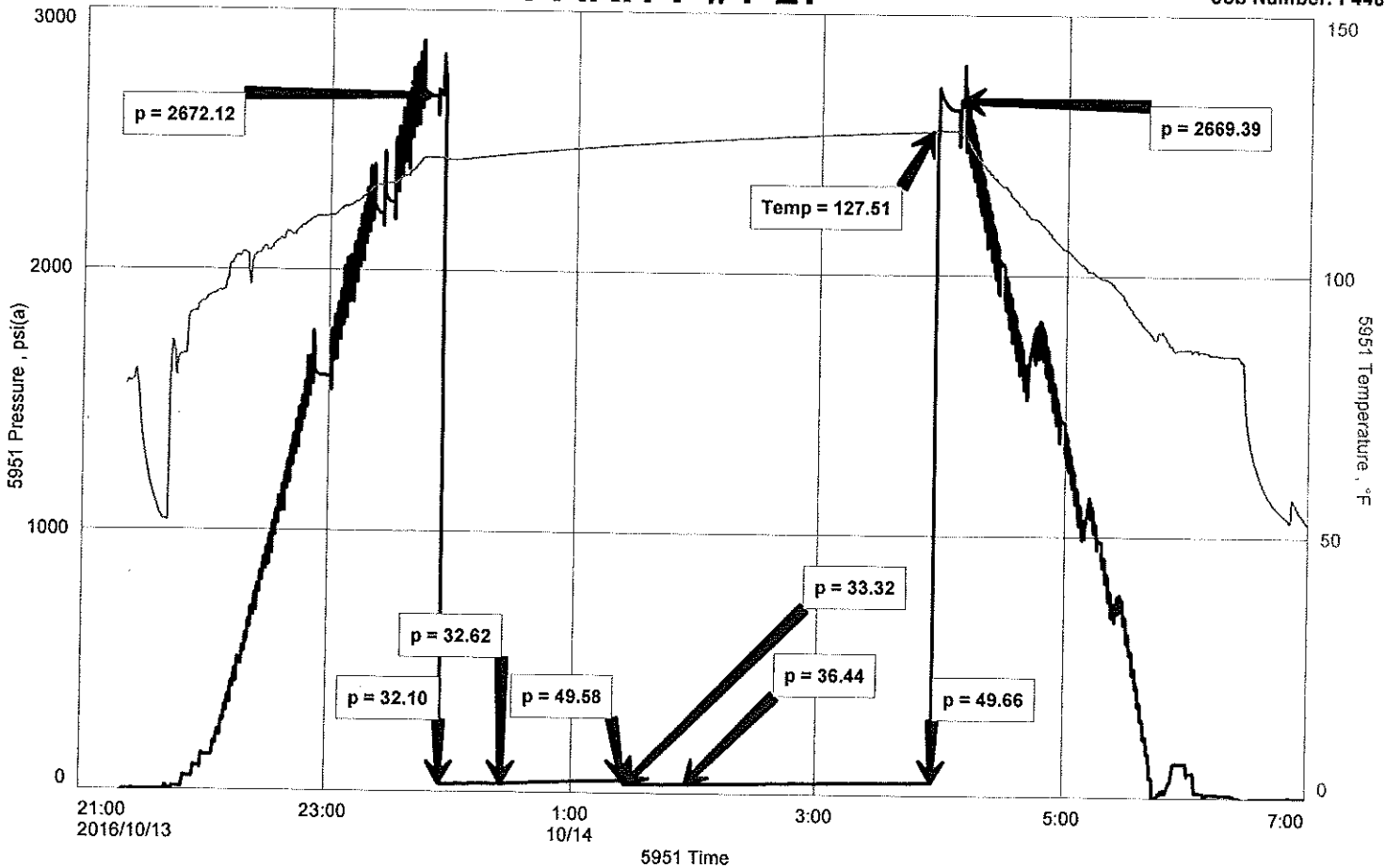
Initial flow, weak surface blow. No blowback.
Final flow, no blow. No blowback.

Recovered 10' of drilling mud. 100% mud.

Raydon Exploration, Inc.
DST #3 Morrow 5647'-5700'
Start Test Date: 2016/10/13
Final Test Date: 2016/10/14

Parity #1-27
Formation: Morrow 5647'-5700'
Pool: WILDCAT
Job Number: F448

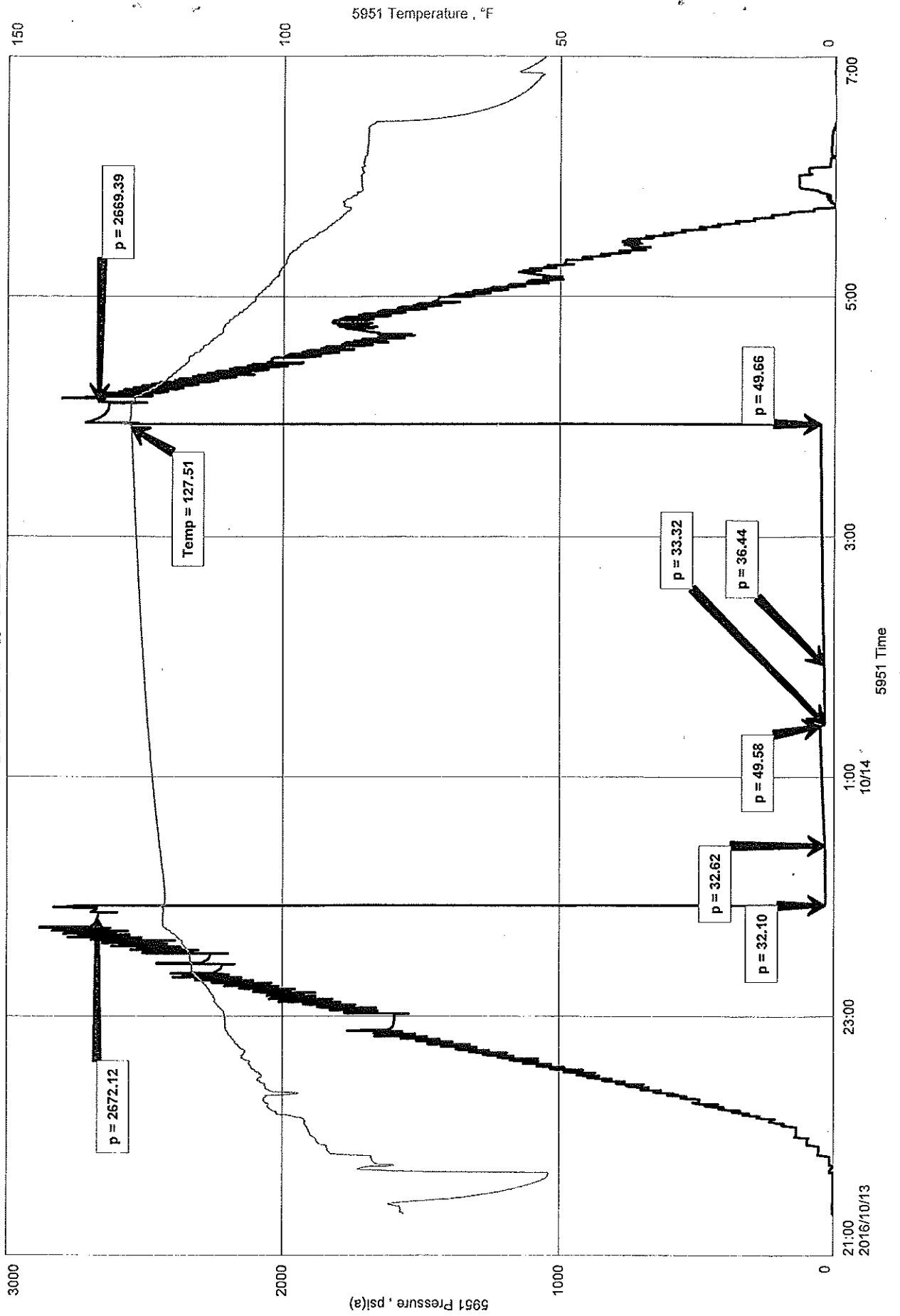
PARITY #1-27



Raydon Exploration, Inc.
DST #3 Morrow 5647-5700'
Start Test Date: 2016/10/13
Final Test Date: 2016/10/14

Parity #1-27
Formation: Morrow 5647-5700'
Pool: WILDCAT
Job Number: F448

PARITY #1-27





DIAMOND TESTING, LLC
 P.O. Box 157
HOISINGTON, KANSAS 67544
 (620) 653-7550 • (800) 542-7313
 PARITY1DST4

Company Raydon Exploration, Inc. Lease & Well No. Parity No. 1-27
 Elevation 2738 KB Formation St. Louis Effective Pay Ft. Ticket No. F449
 Date 10-17-16 Sec. 27 Twp. 33S Range 31W County Seward State Kansas
 Test Approved By Edwin H. Grieves Diamond Representative Jake Fahrenbruch

Formation Test No. 4 Interval Tested from 6,194 ft. to 6,243 ft. Total Depth 6,243 ft.
 Packer Depth 6,189 ft. Size 6 3/4 in. Packer Depth ft. Size in.
 Packer Depth 6,194 ft. Size 6 3/4 in. Packer Depth ft. Size in.
 Depth of Selective Zone Set ft.

Top Recorder Depth (Inside) 6,201 ft. Recorder Number 5951 Cap. 5,000 psi.
 Bottom Recorder Depth (Outside) 6,202 ft. Recorder Number 5584 Cap. 5,000 psi.
 Below Straddle Recorder Depth ft. Recorder Number Cap. psi.

Drilling Contractor Quest Drilling Services, LLC - Rig 102 Drill Collar Length 264 ft I.D. 2 1/4 in.
 Mud Type Chemical Viscosity 57 Weight Pipe Length ft I.D. in.
 Weight 8.8 Water Loss 5.2 cc. Drill Pipe Length 5,902 ft I.D. 3 1/2 in.
 Chlorides 1,800 P.P.M. Test Tool Length 28 ft Tool Size 3 1/2-IF in.
 Jars: Make Sterling Serial Number 5 Anchor Length 16' perf. w/33' drill pipe Size 4 1/2-FH in.
 Did Well Flow? No Reversed Out No Surface Choke Size 1 in. Bottom Choke Size 5/8 in.
 Main Hole Size 7 7/8 in. Tool Joint Size 4 1/2-XH in.

Blow: 1st Open: Surface blow. Died in 10 mins. No blow back during shut-in.
 2nd Open: No blow. No blow back during shut-in.

Recovered 15 ft. of drilling mud = .073800 bbls. (Grind out: 100%-mud)
 Recovered ft. of
 Recovered ft. of
 Recovered ft. of
 Recovered ft. of
 Recovered ft. of

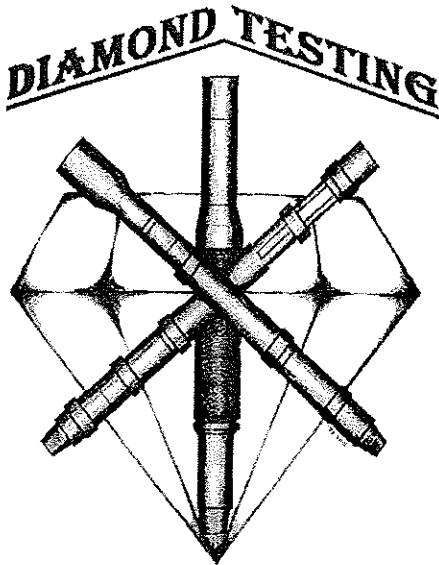
Remarks

Time Set Packer(s) 5:47 P.M. Time Started off Bottom 9:47 P.M. Maximum Temperature 136°
 Initial Hydrostatic Pressure.....(A) 2887 P.S.I.
 Initial Flow Period.....Minutes 30 (B) 26 P.S.I. to (C) 35 P.S.I.
 Initial Closed In Period.....Minutes 60 (D) 1912 P.S.I.
 Final Flow Period.....Minutes 30 (E) 37 P.S.I. to (F) 44 P.S.I.
 Final Closed In Period.....Minutes 120 (G) 1915 P.S.I.
 Final Hydrostatic Pressure.....(H) 2872 P.S.I.

DIAMOND TESTING GENERAL REPORT

Jake Fahrenbruch, Tester

Cell: (620) 282-8977 / Office: (800) 542-7313



TEST INFORMATION	
Well Name	Parity #1-27
Company Name	Raydon Exploration, Inc.
Formation	DST #4, St. Louis 6194'-6243'
Test Type	Bottom-Hole w/J,SJ, ShPkr
Surface Location	Sec 27-33s-31w-Seward Co.-KS
KB Elevation (SL)	2738.000
Gauge Name	5951
Start Test Date	2016/10/17
Start Test Time	15:34:00
Final Test Date	2016/10/18
Final Test Time	00:31:00
Job Number	F449
Contact	Myron Heston
Site Contact	Ed Grieves

TEST RESULTS

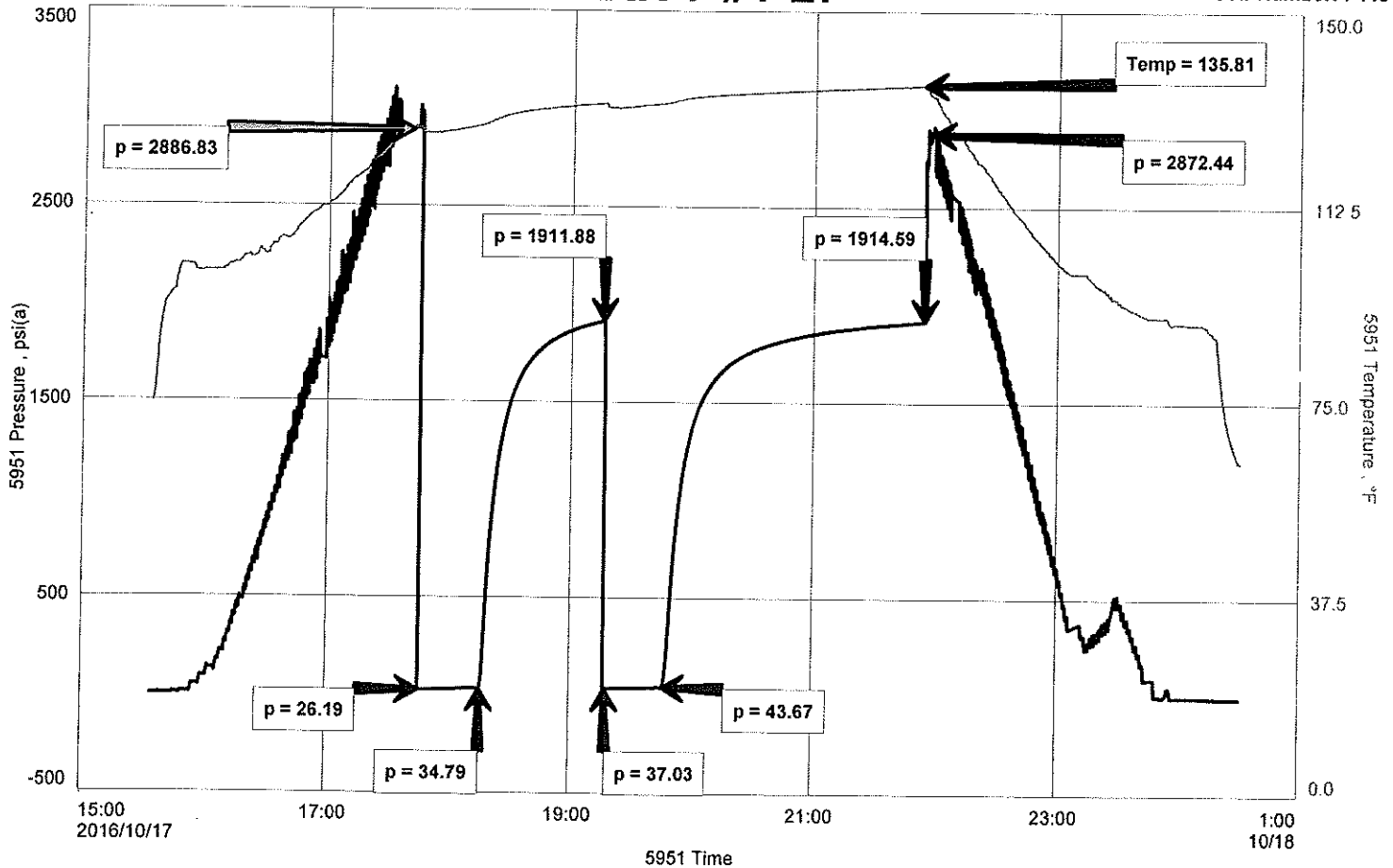
Initial flow, surface blow, dead in 10 minutes. No blowback.
Final flow, no blow. No blowback.

Recovered 10' of drilling mud.

Raydon Exploration, Inc.
DST #4 St. Louis 6194'-6243'
Start Test Date: 2016/10/17
Final Test Date: 2016/10/18

Parity #1-27
Formation: St. Louis 6194'-6243'
Pool: WILDCAT
Job Number: F449

PARITY #1-27



Raydon Exploration, Inc.
DST #4 St. Louis 6194'-6243'
Start Test Date: 2016/10/17
Final Test Date: 2016/10/18

Parity #1-27
Formation: St. Louis 6194'-6243'
Pool: WILDCAT
Job Number: F449

PARITY #1-27

