



## DRILL STEM TEST REPORT

Prepared For: **StrataKan Exploration**

204 W Mill St  
Plainville, KS 67663

ATTN: Jason Alm

### **Andrews B #22-1**

#### **22-22S-13W Stafford,KS**

Start Date: 2016.10.05 @ 20:17:18

End Date: 2016.10.06 @ 03:22:18

Job Ticket #: 55421                      DST #: 1

Trilobite Testing, Inc  
PO Box 362 Hays, KS 67601  
ph: 785-625-4778 fax: 785-625-5620

Printed: 2016.10.10 @ 08:53:00

StrataKan Exploration

22-22S-13W Stafford,KS

Andrews B #22-1

DST # 1

LKC "I - K"

2016.10.05



**TRILOBITE TESTING, INC**

# DRILL STEM TEST REPORT

StrataKan Exploration  
 204 W Mill St  
 Plainville, KS 67663  
 ATTN: Jason Alm

**22-22S-13W Stafford,KS**

**Andrews B #22-1**

Job Ticket: 55421      **DST#: 1**  
 Test Start: 2016.10.05 @ 20:17:18

## GENERAL INFORMATION:

Formation: **LKC "I - K"**  
 Deviated: No Whipstock: ft (KB)  
 Time Tool Opened: 22:42:03  
 Time Test Ended: 03:22:18  
 Interval: **3540.00 ft (KB) To 3610.00 ft (KB) (TVD)**  
 Total Depth: 3610.00 ft (KB) (TVD)  
 Hole Diameter: 7.88 inches Hole Condition: Good  
 Test Type: Conventional Bottom Hole (Initial)  
 Tester: Leal Cason  
 Unit No: 74  
 Reference Elevations: 1895.00 ft (KB)  
 1890.00 ft (CF)  
 KB to GR/CF: 5.00 ft

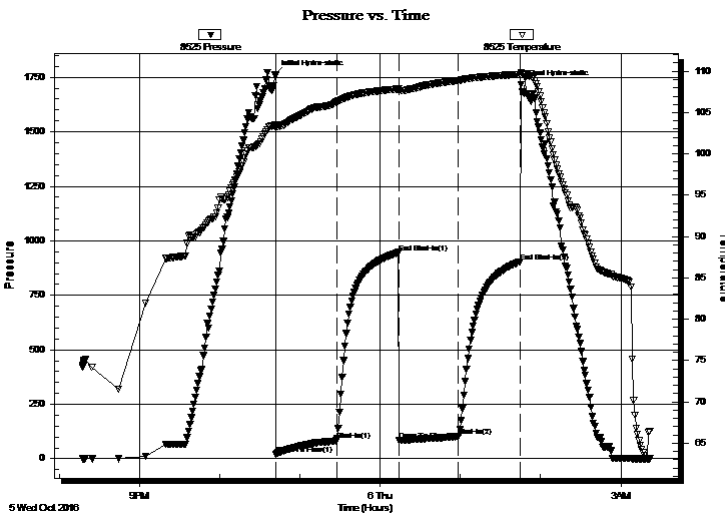
## Serial #: 8525

Inside

Press@RunDepth: 102.38 psig @ 3541.00 ft (KB)      Capacity: 8000.00 psig  
 Start Date: 2016.10.05      End Date: 2016.10.06      Last Calib.: 2016.10.06  
 Start Time: 20:17:19      End Time: 03:22:18      Time On Btm: 2016.10.05 @ 22:41:18  
 Time Off Btm: 2016.10.06 @ 01:45:33

TEST COMMENT: IF: Weak Blow Built to 4"  
 IS: No Blow Back  
 FF: Weak Blow, Built to 2"  
 FS: No Blow Back

## PRESSURE SUMMARY



Time (Min.)	Pressure (psig)	Temp (deg F)	Annotation
0	1762.78	103.47	Initial Hydro-static
1	21.61	103.19	Open To Flow (1)
46	83.25	106.29	Shut-In(1)
93	946.56	107.88	End Shut-In(1)
93	83.93	107.64	Open To Flow (2)
138	102.38	108.89	Shut-In(2)
184	904.51	109.62	End Shut-In(2)
185	1716.82	109.87	Final Hydro-static

## Recovery

Length (ft)	Description	Volume (bbl)
180.00	Mud	1.45

## Gas Rates

	Choke (inches)	Pressure (psig)	Gas Rate (Mcf/d)





**TRILOBITE  
TESTING, INC**

# DRILL STEM TEST REPORT

**TOOL DIAGRAM**

StrataKan Exploration

**22-22S-13W Stafford,KS**

204 W Mill St  
Plainville, KS 67663

**Andrews B #22-1**

Job Ticket: 55421

**DST#: 1**

ATTN: Jason Alm

Test Start: 2016.10.05 @ 20:17:18

## Tool Information

Drill Pipe:	Length: 3424.00 ft	Diameter: 3.80 inches	Volume: 48.03 bbl	Tool Weight: 2100.00 lb
Heavy Wt. Pipe:	Length: 0.00 ft	Diameter: 0.00 inches	Volume: 0.00 bbl	Weight set on Packer: 25000.00 lb
Drill Collar:	Length: 118.00 ft	Diameter: 2.25 inches	Volume: 0.58 bbl	Weight to Pull Loose: 50000.00 lb
			<u>Total Volume: 48.61 bbl</u>	Tool Chased ft
Drill Pipe Above KB:	21.00 ft			String Weight: Initial 38000.00 lb
Depth to Top Packer:	3540.00 ft			Final 38000.00 lb
Depth to Bottom Packer:	ft			
Interval between Packers:	70.00 ft			
Tool Length:	89.00 ft			
Number of Packers:	2	Diameter: 6.75 inches		

Tool Comments:

Tool Description	Length (ft)	Serial No.	Position	Depth (ft)	Accum. Lengths
------------------	-------------	------------	----------	------------	----------------

Shut In Tool	5.00			3526.00	
Hydraulic tool	5.00			3531.00	
Packer	5.00			3536.00	19.00 Bottom Of Top Packer
Packer	4.00			3540.00	
Stubb	1.00			3541.00	
Recorder	0.00	8525	Inside	3541.00	
Recorder	0.00	6806	Outside	3541.00	
Perforations	7.00			3548.00	
Change Over Sub	1.00			3549.00	
Drill Pipe	32.00			3581.00	
Change Over Sub	1.00			3582.00	
Perforations	25.00			3607.00	
Bullnose	3.00			3610.00	70.00 Bottom Packers & Anchor

**Total Tool Length: 89.00**



**TRILOBITE  
TESTING, INC**

# DRILL STEM TEST REPORT

## FLUID SUMMARY

StrataKan Exploration

**22-22S-13W Stafford,KS**

204 W Mill St  
Plainville, KS 67663

**Andrews B #22-1**

Job Ticket: 55421

**DST#: 1**

ATTN: Jason Alm

Test Start: 2016.10.05 @ 20:17:18

### Mud and Cushion Information

Mud Type: Gel Chem

Cushion Type:

Oil API:

deg API

Mud Weight: 9.00 lb/gal

Cushion Length:

ft

Water Salinity:

ppm

Viscosity: 52.00 sec/qt

Cushion Volume:

bbbl

Water Loss: 8.78 in<sup>3</sup>

Gas Cushion Type:

Resistivity: ohm.m

Gas Cushion Pressure:

psig

Salinity: 4000.00 ppm

Filter Cake: 0.02 inches

### Recovery Information

Recovery Table

Length ft	Description	Volume bbl
180.00	Mud	1.450

Total Length: 180.00 ft      Total Volume: 1.450 bbl

Num Fluid Samples: 0

Num Gas Bombs: 0

Serial #:

Laboratory Name:

Laboratory Location:

Recovery Comments:

Serial #: 8525

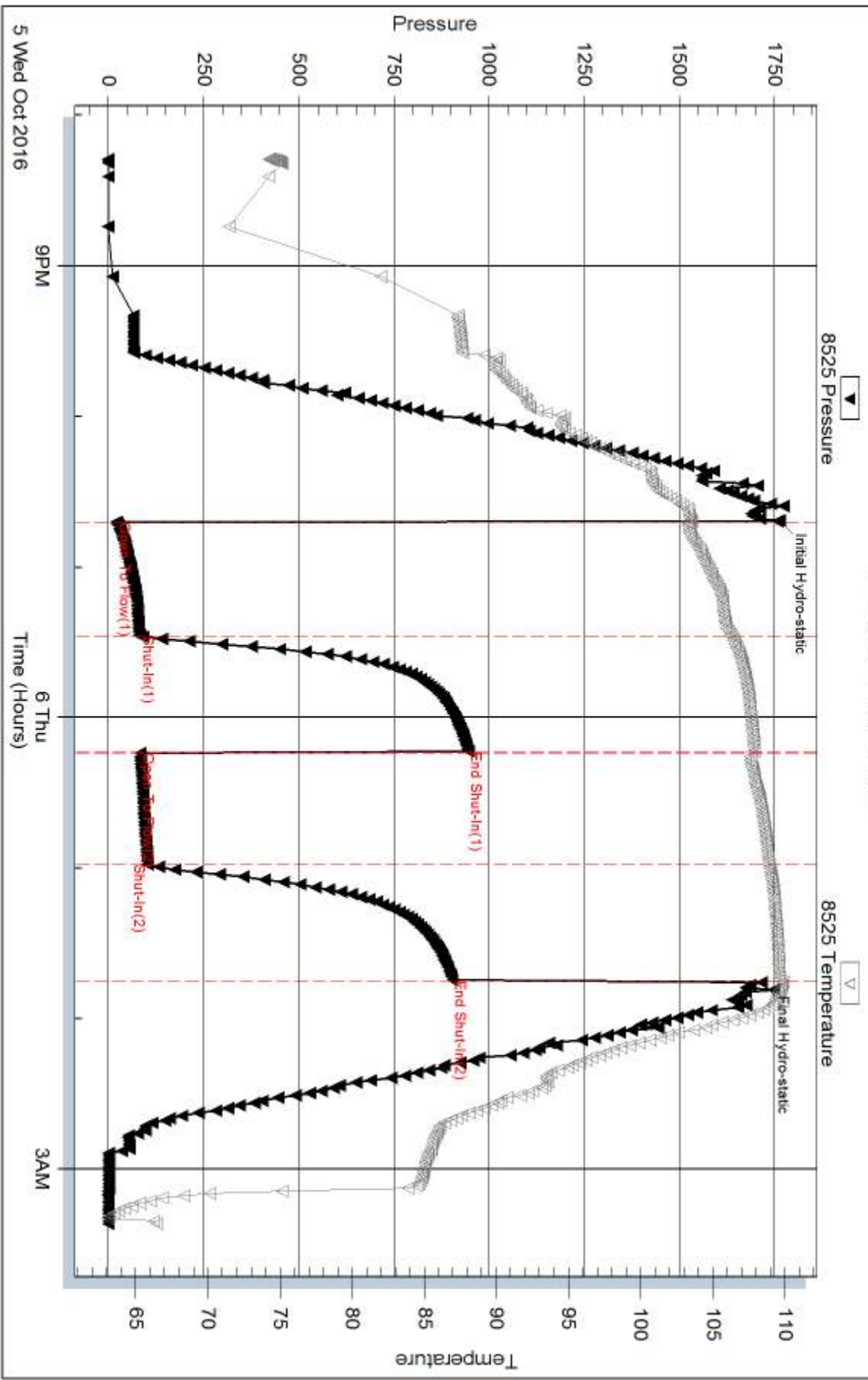
Inside

StrataKan Exploration

Andrew's B #22-1

DST Test Number: 1

### Pressure vs. Time



Trilobite Testing, Inc

Ref. No: 55421

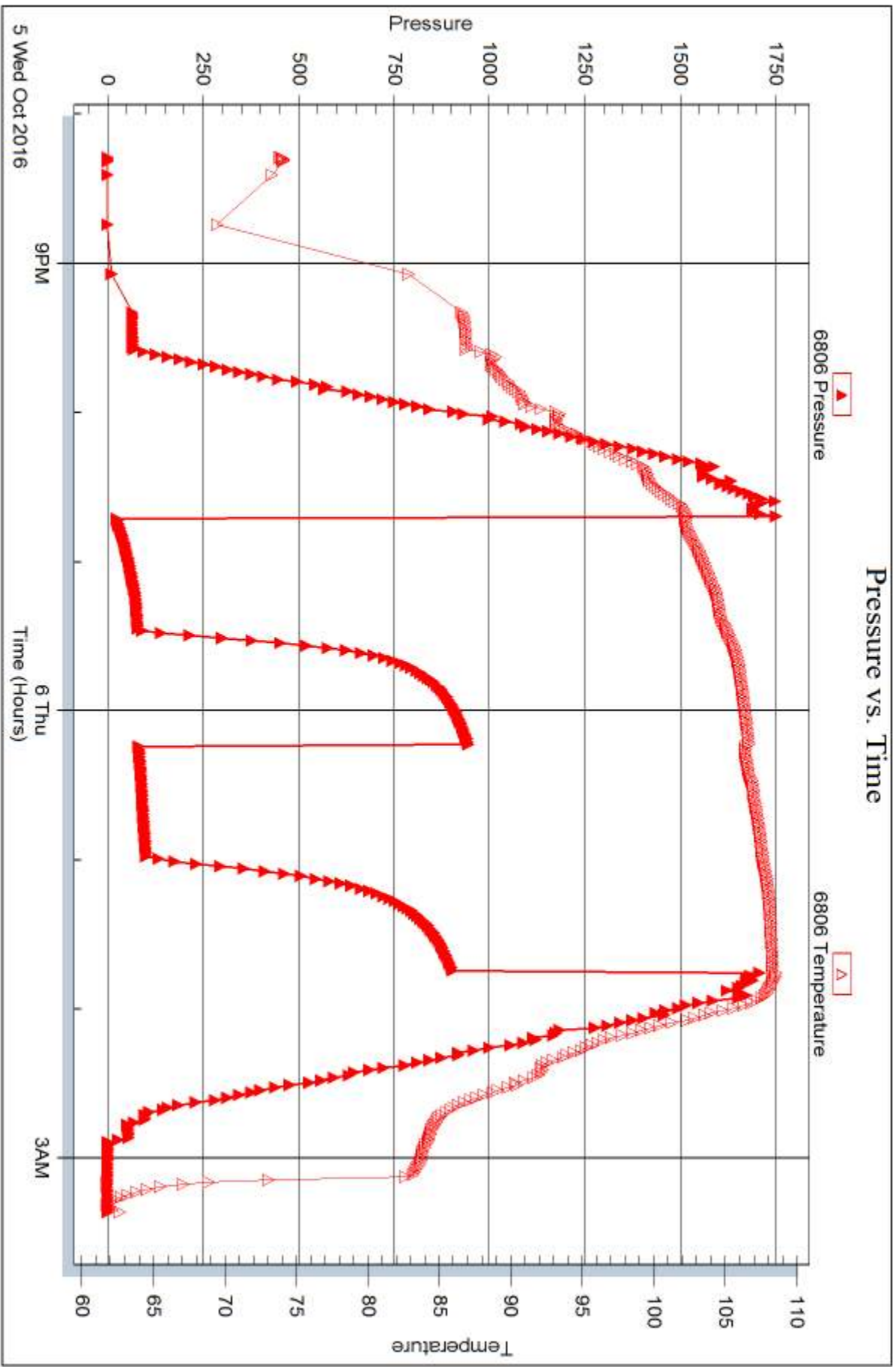
Printed: 2016.10.10 @ 08:53:01

Serial #: 6806

Outside StrataKan Exploration

Andrew's B #22-1

DST Test Number: 1



Trilobite Testing, Inc

Ref. No: 55421

Printed: 2016.10.10 @ 08:53:01



## DRILL STEM TEST REPORT

Prepared For: **StrataKan Exploration**

204 W Mill St  
Plainville, KS 67663

ATTN: Jason Alm

### **Andrews B #22-1**

#### **22-22S-13W Stafford,KS**

Start Date: 2016.10.06 @ 12:54:29

End Date: 2016.10.06 @ 17:44:44

Job Ticket #: 55422                      DST #: 2

Trilobite Testing, Inc  
PO Box 362 Hays, KS 67601  
ph: 785-625-4778 fax: 785-625-5620

Printed: 2016.10.10 @ 08:52:35





**TRILOBITE TESTING, INC**

# DRILL STEM TEST REPORT

StrataKan Exploration  
 204 W Mill St  
 Plainville, KS 67663  
 ATTN: Jason Alm

**22-22S-13W Stafford,KS**

**Andrews B #22-1**

Job Ticket: 55422

**DST#: 2**

Test Start: 2016.10.06 @ 12:54:29

## GENERAL INFORMATION:

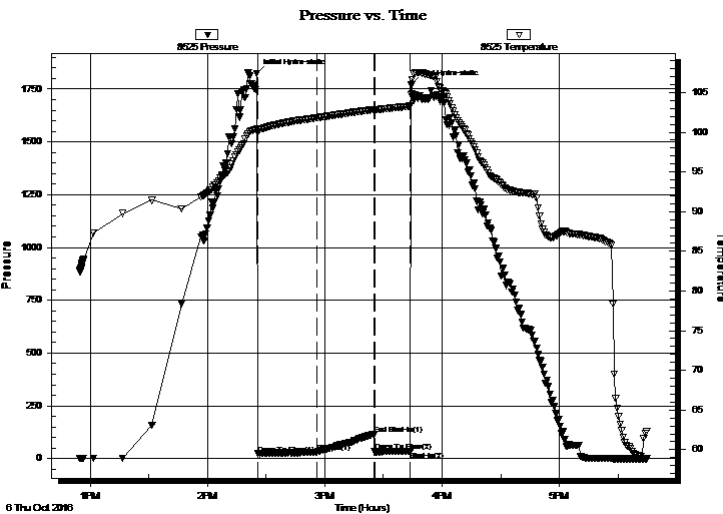
Formation: **Viola**  
 Deviated: No Whipstock: ft (KB)  
 Time Tool Opened: 14:25:44  
 Time Test Ended: 17:44:44  
 Interval: **3624.00 ft (KB) To 3740.00 ft (KB) (TVD)**  
 Total Depth: 3740.00 ft (KB) (TVD)  
 Hole Diameter: 7.88 inches Hole Condition: Good  
 Test Type: Conventional Bottom Hole (Reset)  
 Tester: Leal Cason  
 Unit No: 74  
 Reference Elevations: 1895.00 ft (KB)  
 1890.00 ft (CF)  
 KB to GR/CF: 5.00 ft

## Serial #: 8525

Inside

Press@RunDepth: 30.66 psig @ 3625.00 ft (KB) Capacity: 8000.00 psig  
 Start Date: 2016.10.06 End Date: 2016.10.06 Last Calib.: 2016.10.06  
 Start Time: 12:54:30 End Time: 17:44:44 Time On Btm: 2016.10.06 @ 14:25:14  
 Time Off Btm: 2016.10.06 @ 15:44:14

TEST COMMENT: IF: Weak 1/2" Blow , Died Off to Surface Blow  
 IS: No Blow Back  
 FF: Weak Surface Blow , Dead @ 6 minutes, Pulled Tool



## PRESSURE SUMMARY

Time (Min.)	Pressure (psig)	Temp (deg F)	Annotation
0	1822.62	100.44	Initial Hydro-static
1	22.59	100.06	Open To Flow (1)
31	30.66	101.83	Shut-In(1)
60	116.12	102.85	End Shut-In(1)
61	32.65	102.84	Open To Flow (2)
79	34.89	103.29	Shut-In(2)
79	1769.13	104.70	Final Hydro-static

## Recovery

Length (ft)	Description	Volume (bbl)
5.00	Mud	0.02

\* Recovery from multiple tests

## Gas Rates

Choke (inches)	Pressure (psig)	Gas Rate (Mcf/d)



**TRILOBITE TESTING, INC**

# DRILL STEM TEST REPORT

StrataKan Exploration  
 204 W Mill St  
 Plainville, KS 67663  
 ATTN: Jason Alm

**22-22S-13W Stafford,KS**

**Andrews B #22-1**

Job Ticket: 55422

**DST#: 2**

Test Start: 2016.10.06 @ 12:54:29

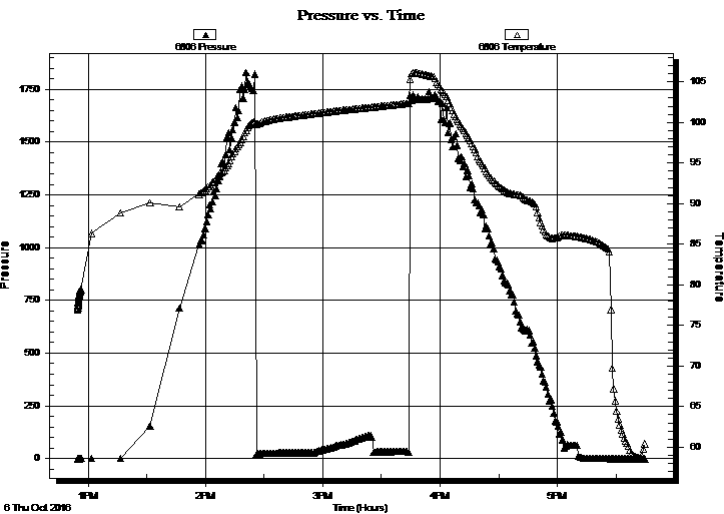
## GENERAL INFORMATION:

Formation: **Viola**  
 Deviated: No Whipstock: ft (KB)  
 Time Tool Opened: 14:25:44  
 Time Test Ended: 17:44:44  
 Interval: **3624.00 ft (KB) To 3740.00 ft (KB) (TVD)**  
 Total Depth: 3740.00 ft (KB) (TVD)  
 Hole Diameter: 7.88 inches Hole Condition: Good  
 Test Type: Conventional Bottom Hole (Reset)  
 Tester: Leal Cason  
 Unit No: 74  
 Reference Elevations: 1895.00 ft (KB)  
 1890.00 ft (CF)  
 KB to GR/CF: 5.00 ft

**Serial #: 6806 Outside**

Press@RunDepth: psig @ 3625.00 ft (KB) Capacity: 8000.00 psig  
 Start Date: 2016.10.06 End Date: 2016.10.06 Last Calib.: 2016.10.06  
 Start Time: 12:54:30 End Time: 17:44:44 Time On Btm:  
 Time Off Btm:

TEST COMMENT: IF: Weak 1/2" Blow , Died Off to Surface Blow  
 IS: No Blow Back  
 FF: Weak Surface Blow , Dead @ 6 minutes, Pulled Tool



## PRESSURE SUMMARY

Time (Min.)	Pressure (psig)	Temp (deg F)	Annotation

## Recovery

Length (ft)	Description	Volume (bbl)
5.00	Mud	0.02

\* Recovery from multiple tests

## Gas Rates

Choke (inches)	Pressure (psig)	Gas Rate (Mcf/d)



**TRILOBITE  
TESTING, INC**

# DRILL STEM TEST REPORT

**TOOL DIAGRAM**

StrataKan Exploration

**22-22S-13W Stafford,KS**

204 W Mill St  
Plainville, KS 67663

**Andrews B #22-1**

Job Ticket: 55422

**DST#: 2**

ATTN: Jason Alm

Test Start: 2016.10.06 @ 12:54:29

## Tool Information

Drill Pipe:	Length: 3490.00 ft	Diameter: 3.80 inches	Volume: 48.96 bbl	Tool Weight:	2100.00 lb
Heavy Wt. Pipe:	Length: 0.00 ft	Diameter: 0.00 inches	Volume: 0.00 bbl	Weight set on Packer:	25000.00 lb
Drill Collar:	Length: 118.00 ft	Diameter: 2.25 inches	Volume: 0.58 bbl	Weight to Pull Loose:	60000.00 lb
			<u>Total Volume: 49.54 bbl</u>	Tool Chased	ft
Drill Pipe Above KB:	3.00 ft			String Weight: Initial	40000.00 lb
Depth to Top Packer:	3624.00 ft			Final	40000.00 lb
Depth to Bottom Packer:	ft				
Interval between Packers:	116.00 ft				
Tool Length:	135.00 ft				
Number of Packers:	2	Diameter: 6.75 inches			

Tool Comments:

Tool Description	Length (ft)	Serial No.	Position	Depth (ft)	Accum. Lengths
------------------	-------------	------------	----------	------------	----------------

Shut In Tool	5.00			3610.00	
Hydraulic tool	5.00			3615.00	
Packer	5.00			3620.00	19.00 Bottom Of Top Packer
Packer	4.00			3624.00	
Stubb	1.00			3625.00	
Recorder	0.00	8525	Inside	3625.00	
Recorder	0.00	6806	Outside	3625.00	
Perforations	1.00			3626.00	
Change Over Sub	1.00			3627.00	
Drill Pipe	94.00			3721.00	
Change Over Sub	1.00			3722.00	
Perforations	15.00			3737.00	
Bullnose	3.00			3740.00	116.00 Bottom Packers & Anchor

**Total Tool Length: 135.00**



**TRILOBITE  
TESTING, INC**

# DRILL STEM TEST REPORT

## FLUID SUMMARY

StrataKan Exploration

**22-22S-13W Stafford,KS**

204 W Mill St  
Plainville, KS 67663

**Andrews B #22-1**

Job Ticket: 55422

**DST#: 2**

ATTN: Jason Alm

Test Start: 2016.10.06 @ 12:54:29

### Mud and Cushion Information

Mud Type: Gel Chem

Cushion Type:

Oil API:

deg API

Mud Weight: 9.00 lb/gal

Cushion Length: ft

Water Salinity: ppm

Viscosity: 52.00 sec/qt

Cushion Volume: bbl

Water Loss: 8.78 in<sup>3</sup>

Gas Cushion Type:

Resistivity: ohm.m

Gas Cushion Pressure: psig

Salinity: 4000.00 ppm

Filter Cake: 0.02 inches

### Recovery Information

Recovery Table

Length ft	Description	Volume bbl
5.00	Mud	0.025

Total Length: 5.00 ft      Total Volume: 0.025 bbl

Num Fluid Samples: 0

Num Gas Bombs: 0

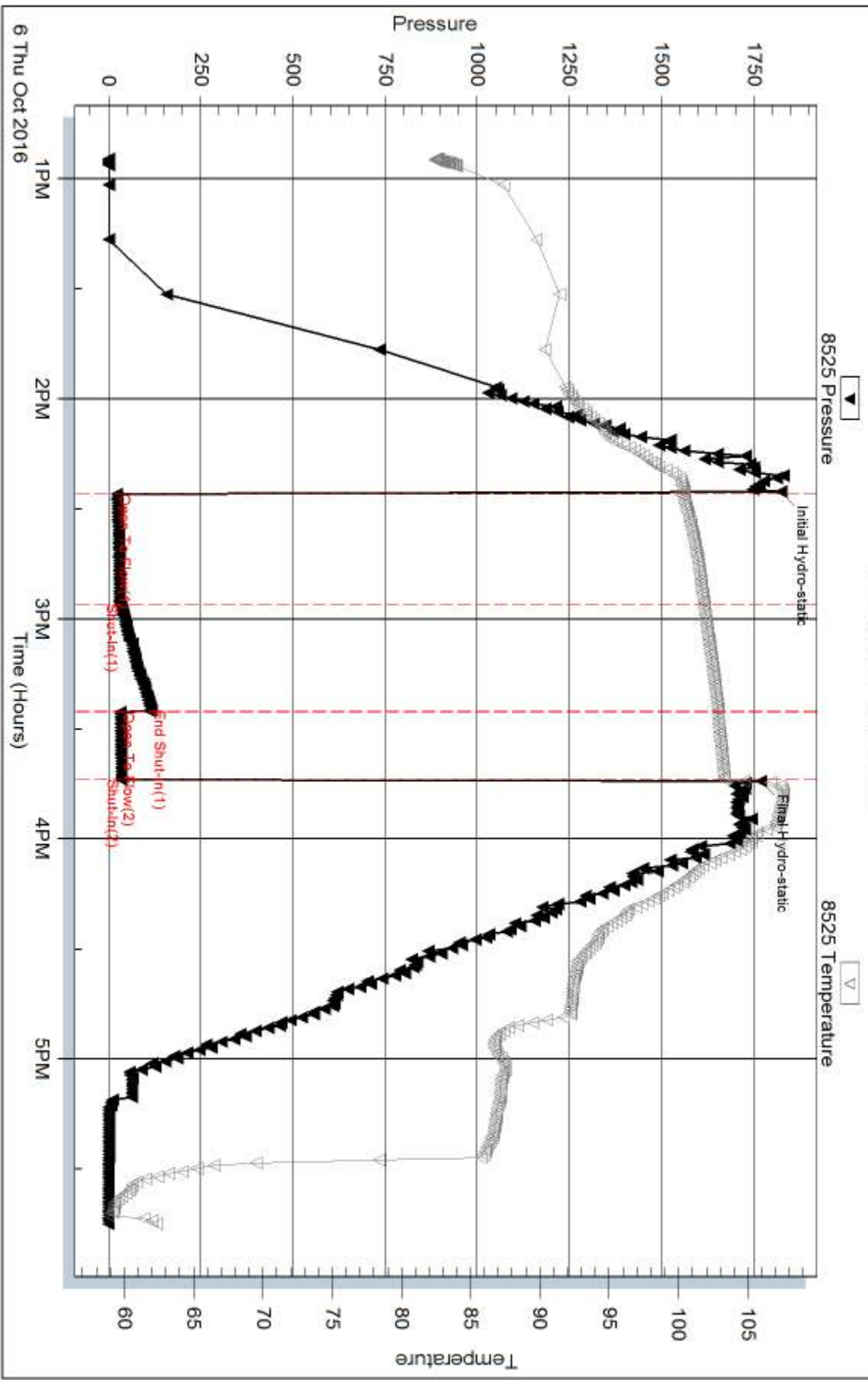
Serial #:

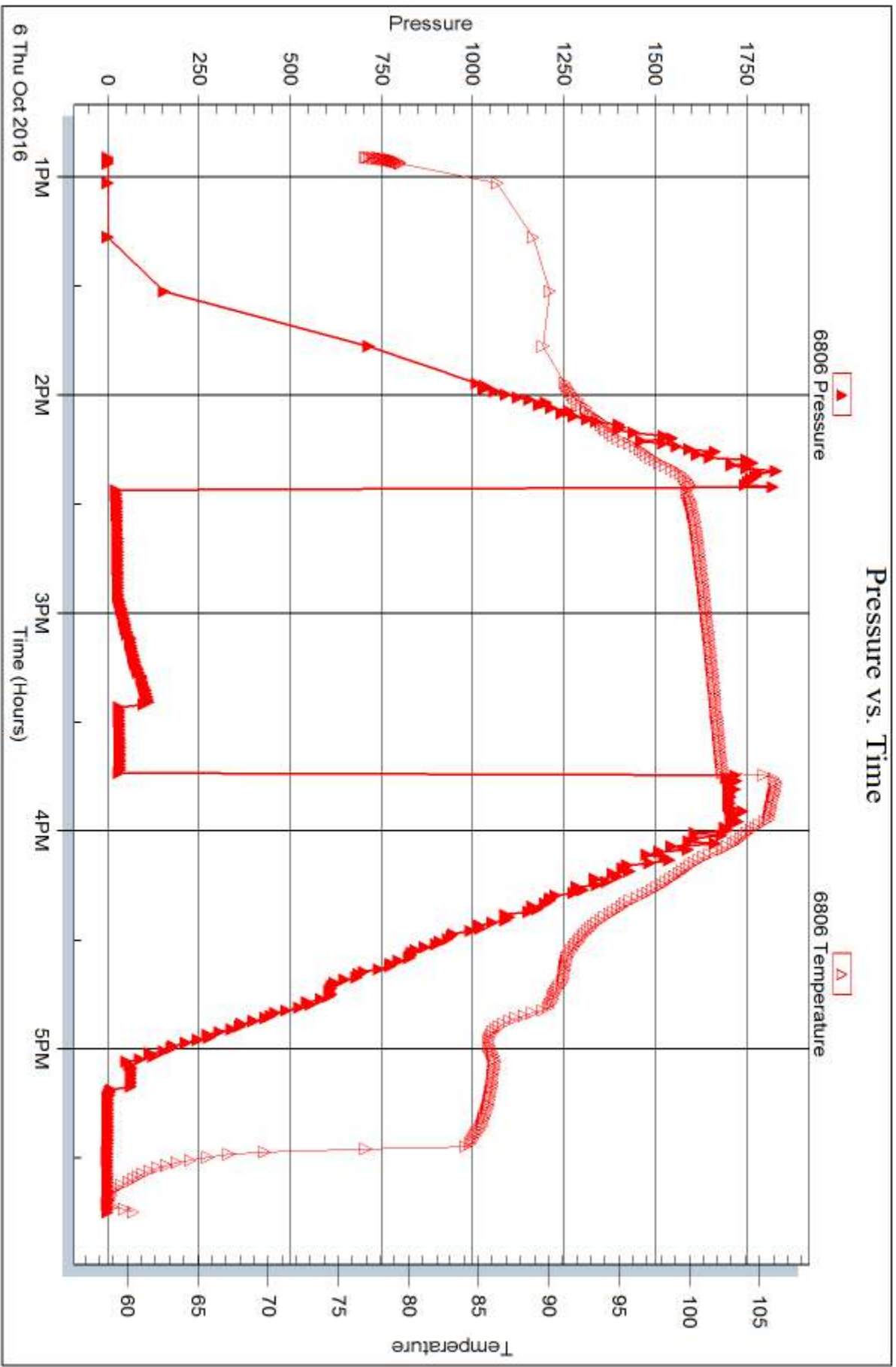
Laboratory Name:

Laboratory Location:

Recovery Comments:

### Pressure vs. Time







## DRILL STEM TEST REPORT

Prepared For: **StrataKan Exploration**

204 W Mill St  
Plainville, KS 67663

ATTN: Jason Alm

### **Andrews B #22-1**

#### **22-22S-13W Stafford,KS**

Start Date: 2016.10.07 @ 02:38:43

End Date: 2016.10.07 @ 09:18:13

Job Ticket #: 55423                      DST #: 3

Trilobite Testing, Inc  
PO Box 362 Hays, KS 67601  
ph: 785-625-4778 fax: 785-625-5620

Printed: 2016.10.10 @ 08:51:51



**TRILOBITE TESTING, INC**

# DRILL STEM TEST REPORT

StrataKan Exploration

**22-22S-13W Stafford,KS**

204 W Mill St  
Plainville, KS 67663

**Andrews B #22-1**

Job Ticket: 55423

**DST#: 3**

ATTN: Jason Alm

Test Start: 2016.10.07 @ 02:38:43

## GENERAL INFORMATION:

Formation: **Simpson**

Deviated: No Whipstock: ft (KB)

Time Tool Opened: 04:19:58

Time Test Ended: 09:18:13

Test Type: Conventional Bottom Hole (Reset)

Tester: Leal Cason

Unit No: 74

**Interval: 3740.00 ft (KB) To 3790.00 ft (KB) (TVD)**

Reference Elevations: 1895.00 ft (KB)

Total Depth: 3790.00 ft (KB) (TVD)

1890.00 ft (CF)

Hole Diameter: 7.88 inches Hole Condition: Good

KB to GR/CF: 5.00 ft

**Serial #: 8525 Inside**

Press@RunDepth: 76.84 psig @ 3741.00 ft (KB)

Capacity: 8000.00 psig

Start Date: 2016.10.07

End Date:

2016.10.07

Last Calib.:

2016.10.07

Start Time: 02:38:44

End Time:

09:18:13

Time On Btm:

2016.10.07 @ 04:19:13

Time Off Btm:

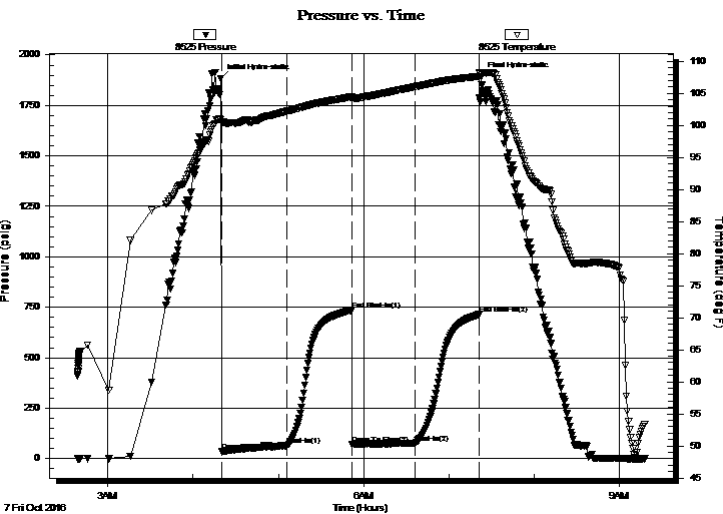
2016.10.07 @ 07:22:28

TEST COMMENT: IF: Weak Blow , Built to 3 1/2"

IS: No Blow Back

FF: Weak Blow Built to 1"

FS: No Blow Back



## PRESSURE SUMMARY

Time (Min.)	Pressure (psig)	Temp (deg F)	Annotation
0	1884.16	100.85	Initial Hydro-static
1	35.25	100.35	Open To Flow (1)
47	64.81	102.21	Shut-In(1)
93	735.29	104.45	End Shut-In(1)
93	72.52	104.27	Open To Flow (2)
137	76.84	106.04	Shut-In(2)
182	714.51	107.67	End Shut-In(2)
184	1891.12	108.28	Final Hydro-static

## Recovery

Length (ft)	Description	Volume (bbl)
120.00	GOWCM 10%G 10%O 12%W 68%M	0.61

\* Recovery from multiple tests

## Gas Rates

	Choke (inches)	Pressure (psig)	Gas Rate (Mcf/d)







**TRILOBITE  
TESTING, INC**

# DRILL STEM TEST REPORT

**TOOL DIAGRAM**

StrataKan Exploration

**22-22S-13W Stafford,KS**

204 W Mill St  
Plainville, KS 67663

**Andrews B #22-1**

Job Ticket: 55423

**DST#: 3**

ATTN: Jason Alm

Test Start: 2016.10.07 @ 02:38:43

## Tool Information

Drill Pipe:	Length: 3615.00 ft	Diameter: 3.80 inches	Volume: 50.71 bbl	Tool Weight: 2100.00 lb
Heavy Wt. Pipe:	Length: 0.00 ft	Diameter: 0.00 inches	Volume: 0.00 bbl	Weight set on Packer: 25000.00 lb
Drill Collar:	Length: 118.00 ft	Diameter: 2.25 inches	Volume: 0.58 bbl	Weight to Pull Loose: 45000.00 lb
			<u>Total Volume: 51.29 bbl</u>	Tool Chased ft
Drill Pipe Above KB:	12.00 ft			String Weight: Initial 40000.00 lb
Depth to Top Packer:	3740.00 ft			Final 40000.00 lb
Depth to Bottom Packer:	ft			
Interval between Packers:	50.00 ft			
Tool Length:	69.00 ft			
Number of Packers:	2	Diameter: 6.75 inches		

Tool Comments:

Tool Description	Length (ft)	Serial No.	Position	Depth (ft)	Accum. Lengths
------------------	-------------	------------	----------	------------	----------------

Shut In Tool	5.00			3726.00	
Hydraulic tool	5.00			3731.00	
Packer	5.00			3736.00	19.00 Bottom Of Top Packer
Packer	4.00			3740.00	
Stubb	1.00			3741.00	
Recorder	0.00	8525	Inside	3741.00	
Recorder	0.00	6806	Outside	3741.00	
Perforations	2.00			3743.00	
Change Over Sub	1.00			3744.00	
Drill Pipe	32.00			3776.00	
Change Over Sub	1.00			3777.00	
Perforations	10.00			3787.00	
Bullnose	3.00			3790.00	50.00 Bottom Packers & Anchor

**Total Tool Length: 69.00**



**TRILOBITE  
TESTING, INC**

# DRILL STEM TEST REPORT

## FLUID SUMMARY

StrataKan Exploration

**22-22S-13W Stafford,KS**

204 W Mill St  
Plainville, KS 67663

**Andrews B #22-1**

Job Ticket: 55423

**DST#: 3**

ATTN: Jason Alm

Test Start: 2016.10.07 @ 02:38:43

### Mud and Cushion Information

Mud Type: Gel Chem

Cushion Type:

Oil API:

deg API

Mud Weight: 9.00 lb/gal

Cushion Length:

ft

Water Salinity:

52000 ppm

Viscosity: 52.00 sec/qt

Cushion Volume:

bbf

Water Loss: 8.78 in<sup>3</sup>

Gas Cushion Type:

Resistivity: ohm.m

Gas Cushion Pressure:

psig

Salinity: 4000.00 ppm

Filter Cake: 0.02 inches

### Recovery Information

Recovery Table

Length ft	Description	Volume bbf
120.00	GOWCM 10%G 10%O 12%W 68%M	0.608

Total Length: 120.00 ft      Total Volume: 0.608 bbf

Num Fluid Samples: 0

Num Gas Bombs: 0

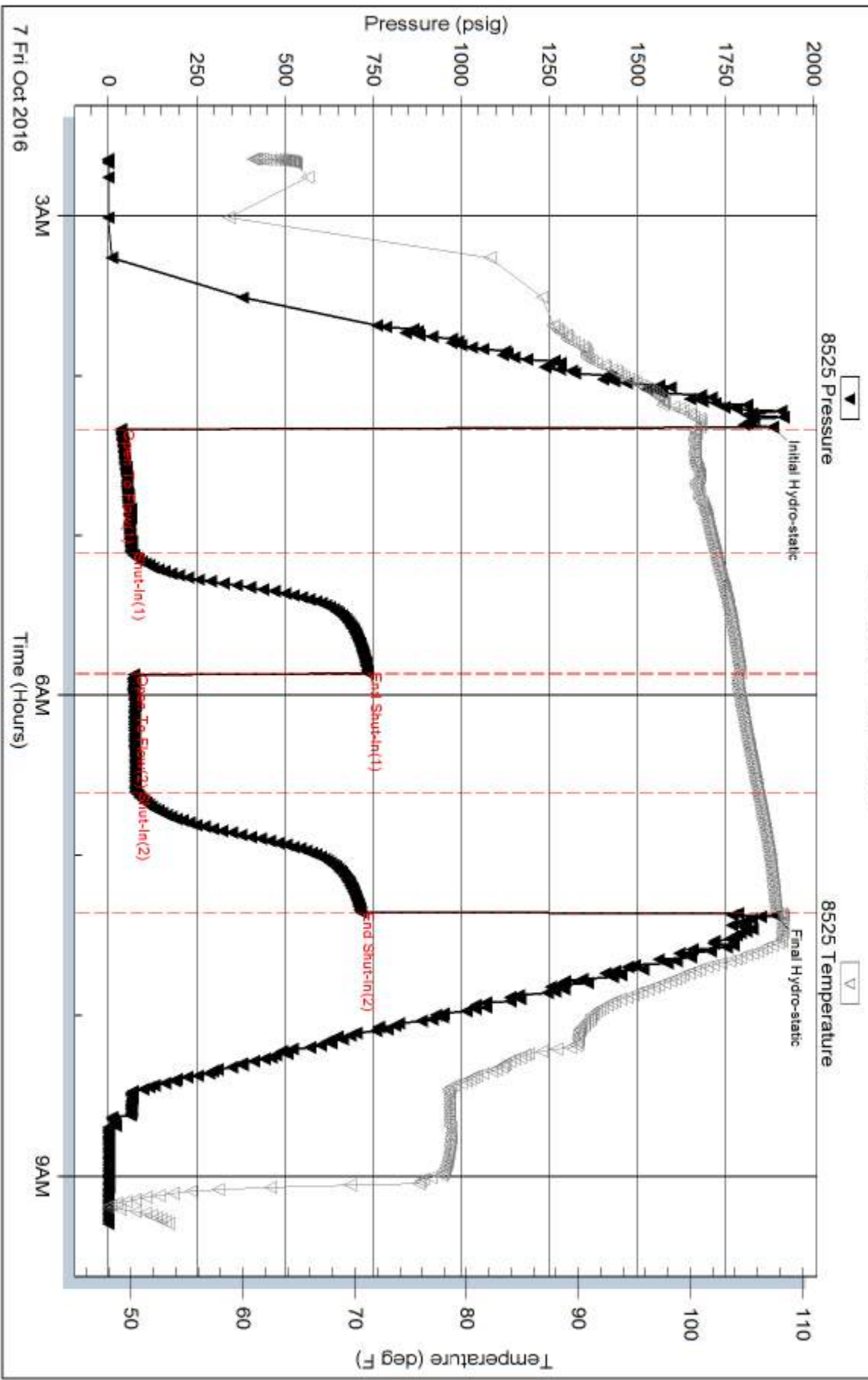
Serial #:

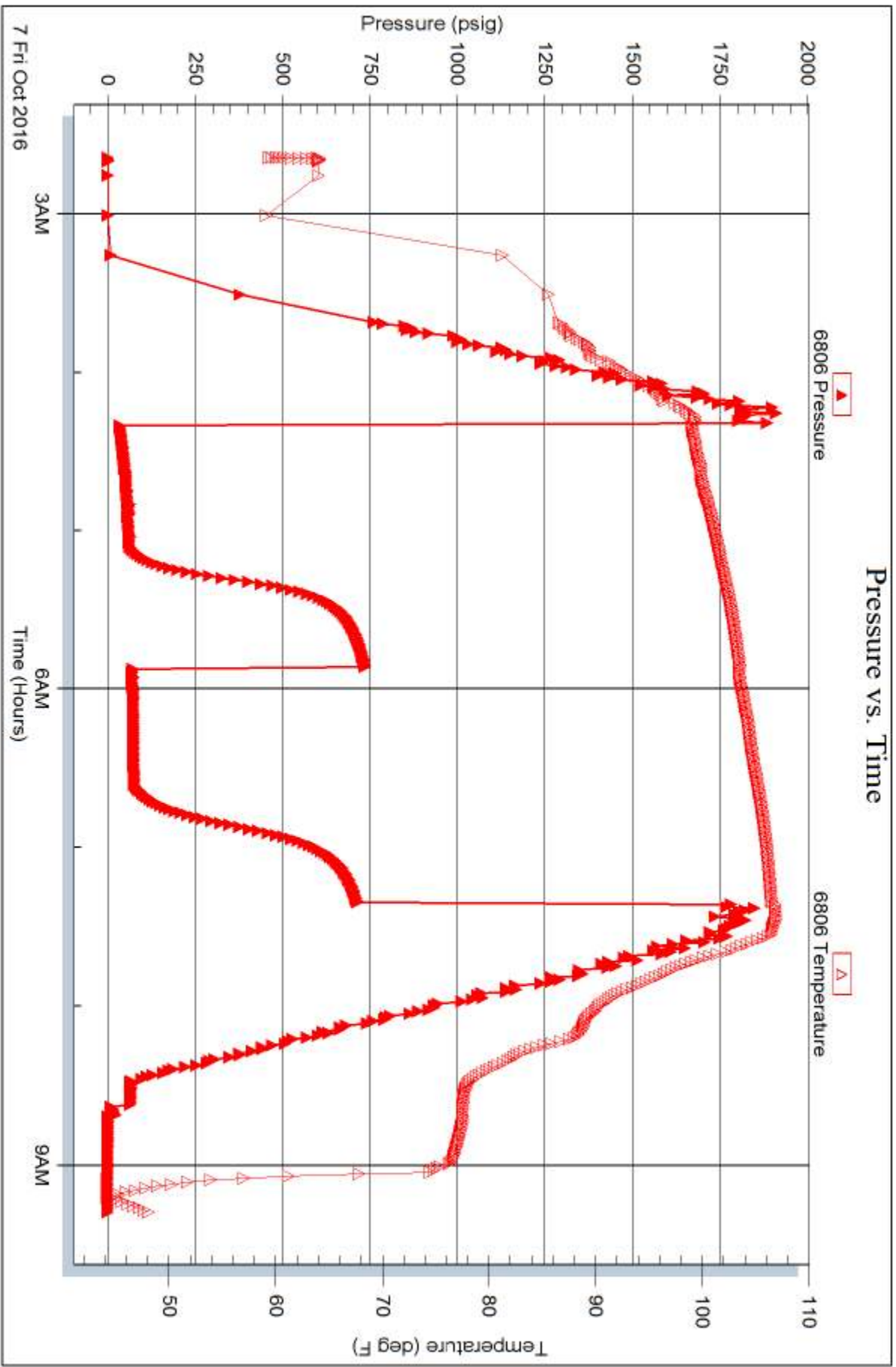
Laboratory Name:

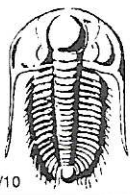
Laboratory Location:

Recovery Comments: RW w as .25 @ 42 degrees

### Pressure vs. Time







# TRILOBITE TESTING INC.

1515 Commerce Parkway • Hays, Kansas 67601

## Test Ticket

NO. 55421

Well Name & No. Andrews B 22-1 Test No. 1 Date 10/05/16  
 Company Strata Kan Exploration Elevation 1295 KB 1890 GL  
 Address 204 W Mill St Plainville, KS 67663  
 Co. Rep / Geo. Jason Alm Rig ww 8  
 Location: Sec. 22 Twp. 22S Rge. 13W Co. Stafford State KS

Interval Tested 3540 - 3610 Zone Tested LKC "IJK"  
 Anchor Length 70 Drill Pipe Run 3424 Mud Wt. 9.0  
 Top Packer Depth 3535 Drill Collars Run 118 Vis 52  
 Bottom Packer Depth 3540 Wt. Pipe Run 0 WL 8.8  
 Total Depth 3610 Chlorides 4000 ppm System LCM 2#

Blow Description IF: Weak Blow Built to 4 inches  
TSI: NO Blow Back  
FF: Weak Blow, Built to 2 inches  
FSI: NO Blow Back

Rec	Feet of	%gas	%oil	%water	%mud
<u>180</u>	<u>Mud</u>				

Rec Total 180 BHT 109 Gravity NIC API RW NIC @ NIC °F Chlorides NIC ppm

- (A) Initial Hydrostatic 1763
- (B) First Initial Flow 22
- (C) First Final Flow 83
- (D) Initial Shut-In 947
- (E) Second Initial Flow 84
- (F) Second Final Flow 102
- (G) Final Shut-In 904
- (H) Final Hydrostatic 1717

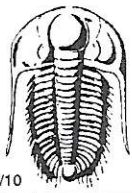
- Test 1050
- Jars
- Safety Joint
- Circ Sub
- Hourly Standby
- Mileage (600) 45
- Sampler
- Straddle
- Shale Packer
- Extra Packer
- Extra Recorder
- Day Standby
- Accessibility
- Sub Total 1095

T-On Location 19:15  
 T-Started 20:17  
 T-Open 22:42  
 T-Pulled 01:44  
 T-Out 03:22  
 Comments \_\_\_\_\_  
 Ruined Shale Packer  
 Ruined Packer  
 Extra Copies  
 Sub Total 0  
 Total 1095  
 MP/DST Disc't \_\_\_\_\_

Initial Open 45  
 Initial Shut-In 45  
 Final Flow 45  
 Final Shut-In 45

Approved By \_\_\_\_\_ Our Representative [Signature]

TriLOBITE TESTING INC. shall not be liable for damaged of any kind of the property or personnel of the one for whom a test is made, or for any loss suffered or sustained, directly or indirectly, through the use of its equipment, or its statements or opinion concerning the results of any test, tools lost or damaged in the hole shall be paid for at cost by the party for whom the test is made.



# TRILOBITE TESTING INC.

1515 Commerce Parkway • Hays, Kansas 67601

## Test Ticket

NO. **55422**

Well Name & No. Andrews B 22-1 Test No. 2 Date 10/06/16  
 Company Strata Kan Exploration Elevation 1895 KB 1890 GL  
 Address 204 W. Mill St Plainville, KS 67663  
 Co. Rep / Geo. Jason Alm Rig ww 8  
 Location: Sec. 22 Twp. 22 S Rge. 13 W Co. Stafford State KS

Interval Tested 3624 - 3740 Zone Tested Viola  
 Anchor Length 116 Drill Pipe Run 3490 Mud Wt. 9.6  
 Top Packer Depth 3619 Drill Collars Run 118 Vis 49  
 Bottom Packer Depth 3624 Wt. Pipe Run 0 WL 9.6  
 Total Depth 3740 Chlorides 5006 ppm System LCM 1.5

Blow Description IF: weak 1/2 inch blow, died off to surface blow

ISI: NO Blow Back

FF: weak surface blow, dead @ 6 minutes, pulled tool

Rec	Feet of	%gas	%oil	%water	%mud
<u>5</u>	<u>Mud</u>				

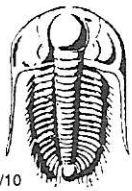
Rec Total 5 BHT 107 Gravity N/C API RW N/C @ N/C °F Chlorides N/C ppm

(A) Initial Hydrostatic 1823  Test 1050 T-On Location 12:15  
 (B) First Initial Flow 23  Jars \_\_\_\_\_ T-Started 12:54  
 (C) First Final Flow 31  Safety Joint \_\_\_\_\_ T-Open 14:25  
 (D) Initial Shut-In 116  Circ Sub \_\_\_\_\_ T-Pulled 15:44  
 (E) Second Initial Flow 33  Hourly Standby \_\_\_\_\_ T-Out 17:44  
 (F) Second Final Flow N/A  Mileage 60 45 Comments \_\_\_\_\_  
 (G) Final Shut-In N/A  Sampler \_\_\_\_\_  
 (H) Final Hydrostatic 1769  Straddle \_\_\_\_\_  
 Ruined Shale Packer \_\_\_\_\_

Initial Open 30  Shale Packer \_\_\_\_\_  
 Initial Shut-In 30  Extra Packer \_\_\_\_\_  
 Final Flow 15  Extra Recorder \_\_\_\_\_  
 Final Shut-In N/A  Day Standby \_\_\_\_\_  
 Accessibility \_\_\_\_\_  
 Sub Total 1095 Total 1095 MP/DST Disc't \_\_\_\_\_

Approved By \_\_\_\_\_ Our Representative [Signature]

TriLOBITE TESTING Inc. shall not be liable for damaged of any kind of the property or personnel of the one for whom a test is made, or for any loss suffered or sustained, directly or indirectly, through the use of its equipment, or its statements or opinion concerning the results of any test, tools lost or damaged in the hole shall be paid for at cost by the party for whom the test is made.



# TRILOBITE TESTING INC.

1515 Commerce Parkway • Hays, Kansas 67601

## Test Ticket

NO. **55423**

Well Name & No. Andrews B 22-1 Test No. 3 Date 10/07/16  
 Company Stratakan Exploration Elevation 1895 KB 1890 GL  
 Address 204 W Mill St Plainville, KS 67663  
 Co. Rep / Geo. Jason Alm Rig WW8  
 Location: Sec. 22 Twp. ~~22S~~ 22S Rge. 13W Co. Stafford State KS

Interval Tested 3740 - 3790 Zone Tested Simpson  
 Anchor Length 50 Drill Pipe Run 3615 Mud Wt. 9.0  
 Top Packer Depth 3735 Drill Collars Run 118 Vis 49  
 Bottom Packer Depth 3740 Wt. Pipe Run 0 WL 9.6  
 Total Depth 3790 Chlorides 5000 ppm System LCM 1.5

Blow Description IF: Weak Blow, Built to 3 1/2 inches  
IST: NO Blow Back  
FF: Weak Blow, Built to 1 inch  
FSD: NO Blow Back

Rec	Feet of	%gas	%oil	%water	%mud
<u>120</u>	<u>GOWCM</u>	<u>10</u>	<u>10</u>	<u>12</u>	<u>68</u>
Rec	Feet of	%gas	%oil	%water	%mud
Rec	Feet of	%gas	%oil	%water	%mud
Rec	Feet of	%gas	%oil	%water	%mud
Rec	Feet of	%gas	%oil	%water	%mud

Rec Total 120 BHT 108 Gravity N/C API RW .25 @ 42 °F Chlorides 52000 ppm

(A) Initial Hydrostatic 1884  Test 1050 T-On Location 02:00  
 (B) First Initial Flow 35  Jars \_\_\_\_\_ T-Started 02:38  
 (C) First Final Flow 65  Safety Joint \_\_\_\_\_ T-Open 04:19  
 (D) Initial Shut-In 735  Circ Sub \_\_\_\_\_ T-Pulled 07:21  
 (E) Second Initial Flow 72  Hourly Standby \_\_\_\_\_ T-Out 09:18  
 (F) Second Final Flow 77  Mileage 60 90 Comments Loaded Tools  
 (G) Final Shut-In 714  Sampler \_\_\_\_\_ @ 20:30 on 10/07  
 (H) Final Hydrostatic 1891  Straddle \_\_\_\_\_  
 Ruined Shale Packer \_\_\_\_\_

Initial Open 45  Shale Packer \_\_\_\_\_  
 Initial Shut-In 45  Ruined Packer \_\_\_\_\_  
 Final Flow 45  Extra Packer \_\_\_\_\_  
 Final Shut-In 45  Extra Recorder \_\_\_\_\_  
 Extra Recorder \_\_\_\_\_ Sub Total 0  
 Day Standby \_\_\_\_\_ Total 1140  
 Accessibility \_\_\_\_\_ MP/DST Disc't \_\_\_\_\_  
 Sub Total 1140

Approved By \_\_\_\_\_ Our Representative [Signature]

Trilobite Testing Inc. shall not be liable for damaged of any kind of the property or personnel of the one for whom a test is made, or for any loss suffered or sustained, directly or indirectly, through the use of its equipment, or its statements or opinion concerning the results of any test, tools lost or damaged in the hole shall be paid for at cost by the party for whom the test is made.