



DRILL STEM TEST REPORT

Prepared For: **American Warrior Co Inc**

PO Box 399
Garden City KS 67846

ATTN: Cecil O'Brate , Jaso

Weber 2-7

7-13s-19w Ellis,KS

Start Date: 2016.12.16 @ 20:35:33

End Date: 2016.12.17 @ 04:05:27

Job Ticket #: 64079 DST #: 1

Trilobite Testing, Inc
PO Box 362 Hays, KS 67601
ph: 785-625-4778 fax: 785-625-5620

Printed: 2016.12.19 @ 13:31:45



TRILOBITE TESTING, INC

DRILL STEM TEST REPORT

American Warrior Co Inc

7-13s-19w Ellis,KS

PO Box 399
Garden City KS 67846

Weber 2-7

Job Ticket: 64079

DST#: 1

ATTN: Cecil O'Brate , Jaso

Test Start: 2016.12.16 @ 20:35:33

GENERAL INFORMATION:

Formation: **Toronto-LKC "C"**

Deviated: No Whipstock: ft (KB)

Time Tool Opened: 22:33:43

Time Test Ended: 04:05:27

Test Type: Conventional Bottom Hole (Initial)

Tester: Ray Schwager

Unit No: 77

Interval: 3424.00 ft (KB) To 3515.00 ft (KB) (TVD)

Reference Elevations: 2152.00 ft (KB)

Total Depth: 3515.00 ft (KB) (TVD)

2144.00 ft (CF)

Hole Diameter: 7.88 inches Hole Condition: Fair

KB to GR/CF: 8.00 ft

Serial #: 8018

Inside

Press@RunDepth: 147.77 psig @ 3428.00 ft (KB)

Capacity: 8000.00 psig

Start Date: 2016.12.16

End Date:

2016.12.17

Last Calib.: 2016.12.17

Start Time: 20:35:33

End Time:

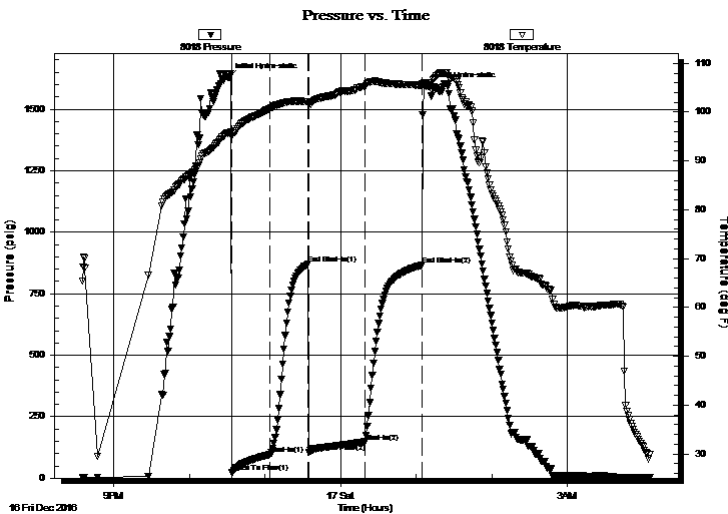
04:05:27

Time On Btm: 2016.12.16 @ 22:31:13

Time Off Btm: 2016.12.17 @ 01:09:42

TEST COMMENT: 30-IFP-w k bl 1/2" to 3/4" bl
30-ISIP-no bl
45-FFP-w k to strg in 23 min
45-FSIP-no bl

PRESSURE SUMMARY



Time (Min.)	Pressure (psig)	Temp (deg F)	Annotation
0	1630.32	95.77	Initial Hydro-static
3	22.89	94.94	Open To Flow (1)
33	96.85	100.74	Shut-In(1)
64	871.88	102.11	End Shut-In(1)
64	104.12	101.81	Open To Flow (2)
109	147.77	105.28	Shut-In(2)
154	866.09	105.57	End Shut-In(2)
159	1592.71	106.02	Final Hydro-static

Recovery

Length (ft)	Description	Volume (bbl)
186.00	MGO 20%G15%M65%O	1.32
154.00	MGO 10%G30%M60%O	1.51
0.00	405'GIP	0.00

Gas Rates

	Choke (inches)	Pressure (psig)	Gas Rate (Mcf/d)



TRILOBITE TESTING, INC

DRILL STEM TEST REPORT

American Warrior Co Inc

7-13s-19w Ellis, KS

PO Box 399
Garden City KS 67846

Weber 2-7

Job Ticket: 64079

DST#: 1

ATTN: Cecil O'Brate , Jaso

Test Start: 2016.12.16 @ 20:35:33

GENERAL INFORMATION:

Formation: **Toronto-LKC "C"**

Deviated: No Whipstock: ft (KB)

Time Tool Opened: 22:33:43

Time Test Ended: 04:05:27

Test Type: Conventional Bottom Hole (Initial)

Tester: Ray Schwager

Unit No: 77

Interval: **3424.00 ft (KB) To 3515.00 ft (KB) (TVD)**

Reference Elevations: 2152.00 ft (KB)

Total Depth: 3515.00 ft (KB) (TVD)

2144.00 ft (CF)

Hole Diameter: 7.88 inches Hole Condition: Fair

KB to GR/CF: 8.00 ft

Serial #: 8700 Outside

Press@RunDepth: psig @ 3428.00 ft (KB)

Start Date: 2016.12.16

End Date: 2016.12.17

Capacity: 8000.00 psig

Last Calib.: 2016.12.17

Start Time: 20:35:35

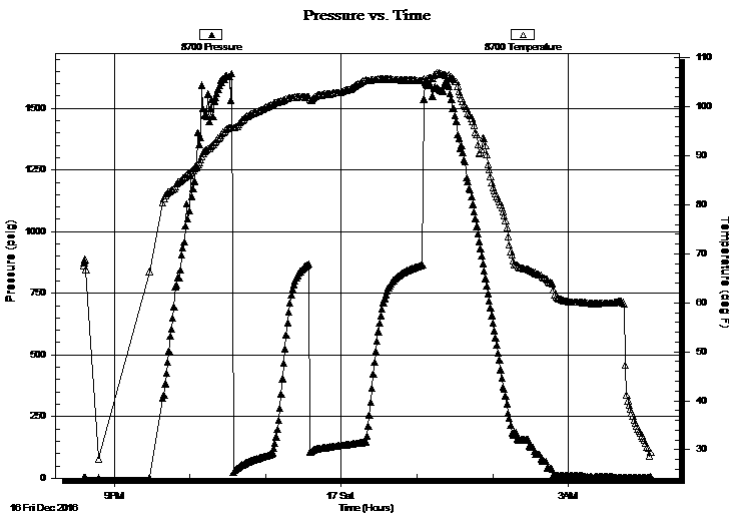
End Time: 04:05:59

Time On Btm:

Time Off Btm:

TEST COMMENT: 30-IFP-w k bl 1/2" to 3/4" bl
30-ISIP-no bl
45-FFP-w k to strg in 23 min
45-FSIP-no bl

PRESSURE SUMMARY



Time (Min.)	Pressure (psig)	Temp (deg F)	Annotation

Recovery

Length (ft)	Description	Volume (bbl)
186.00	MGO 20%G15%M65%O	1.32
154.00	MGO 10%G30%M60%O	1.51
0.00	405'GIP	0.00

Gas Rates

	Choke (inches)	Pressure (psig)	Gas Rate (Mcf/d)



**TRILOBITE
TESTING, INC**

DRILL STEM TEST REPORT

TOOL DIAGRAM

American Warrior Co Inc

7-13s-19w Ellis,KS

PO Box 399
Garden City KS 67846

Weber 2-7

Job Ticket: 64079

DST#: 1

ATTN: Cecil O'Brate , Jaso

Test Start: 2016.12.16 @ 20:35:33

Tool Information

Drill Pipe:	Length: 3149.00 ft	Diameter: 3.80 inches	Volume: 44.17 bbl	Tool Weight: 2200.00 lb
Heavy Wt. Pipe:	Length: 280.00 ft	Diameter: 2.70 inches	Volume: 1.98 bbl	Weight set on Packer: 25000.00 lb
Drill Collar:	Length: 0.00 ft	Diameter: 0.00 inches	Volume: 0.00 bbl	Weight to Pull Loose: 75000.00 lb
			<u>Total Volume: 46.15 bbl</u>	Tool Chased 0.00 ft
Drill Pipe Above KB:	26.00 ft			String Weight: Initial 54000.00 lb
Depth to Top Packer:	3424.00 ft			Final 54000.00 lb
Depth to Bottom Packer:	ft			
Interval between Packers:	91.00 ft			
Tool Length:	112.00 ft			
Number of Packers:	2	Diameter: 6.75 inches		

Tool Comments:

Tool Description

Tool Description	Length (ft)	Serial No.	Position	Depth (ft)	Accum. Lengths
Change Over Sub	1.00			3404.00	
Shut In Tool	5.00			3409.00	
Hydraulic tool	5.00			3414.00	
Packer	5.00			3419.00	21.00 Bottom Of Top Packer
Packer	5.00			3424.00	
Stubb	1.00			3425.00	
Perforations	3.00			3428.00	
Recorder	0.00	8018	Inside	3428.00	
Recorder	0.00	8700	Outside	3428.00	
Blank Spacing	65.00			3493.00	
Perforations	19.00			3512.00	
Bullnose	3.00			3515.00	91.00 Bottom Packers & Anchor

Total Tool Length: 112.00



**TRILOBITE
TESTING, INC**

DRILL STEM TEST REPORT

FLUID SUMMARY

American Warrior Co Inc

7-13s-19w Ellis,KS

PO Box 399
Garden City KS 67846

Weber 2-7

Job Ticket: 64079

DST#: 1

ATTN: Cecil O'Brate , Jaso

Test Start: 2016.12.16 @ 20:35:33

Mud and Cushion Information

Mud Type: Gel Chem

Mud Weight: 9.00 lb/gal

Viscosity: 45.00 sec/qt

Water Loss: 6.79 in³

Resistivity: ohm.m

Salinity: 1000.00 ppm

Filter Cake: 1.00 inches

Cushion Type:

Cushion Length: ft

Cushion Volume: bbl

Gas Cushion Type:

Gas Cushion Pressure: psig

Oil API:

Water Salinity: deg API

ppm

Recovery Information

Recovery Table

Length ft	Description	Volume bbl
186.00	MGO 20%G15%M65%O	1.317
154.00	MGO 10%G30%M60%O	1.507
0.00	405'GIP	0.000

Total Length: 340.00 ft Total Volume: 2.824 bbl

Num Fluid Samples: 0

Num Gas Bombs: 0

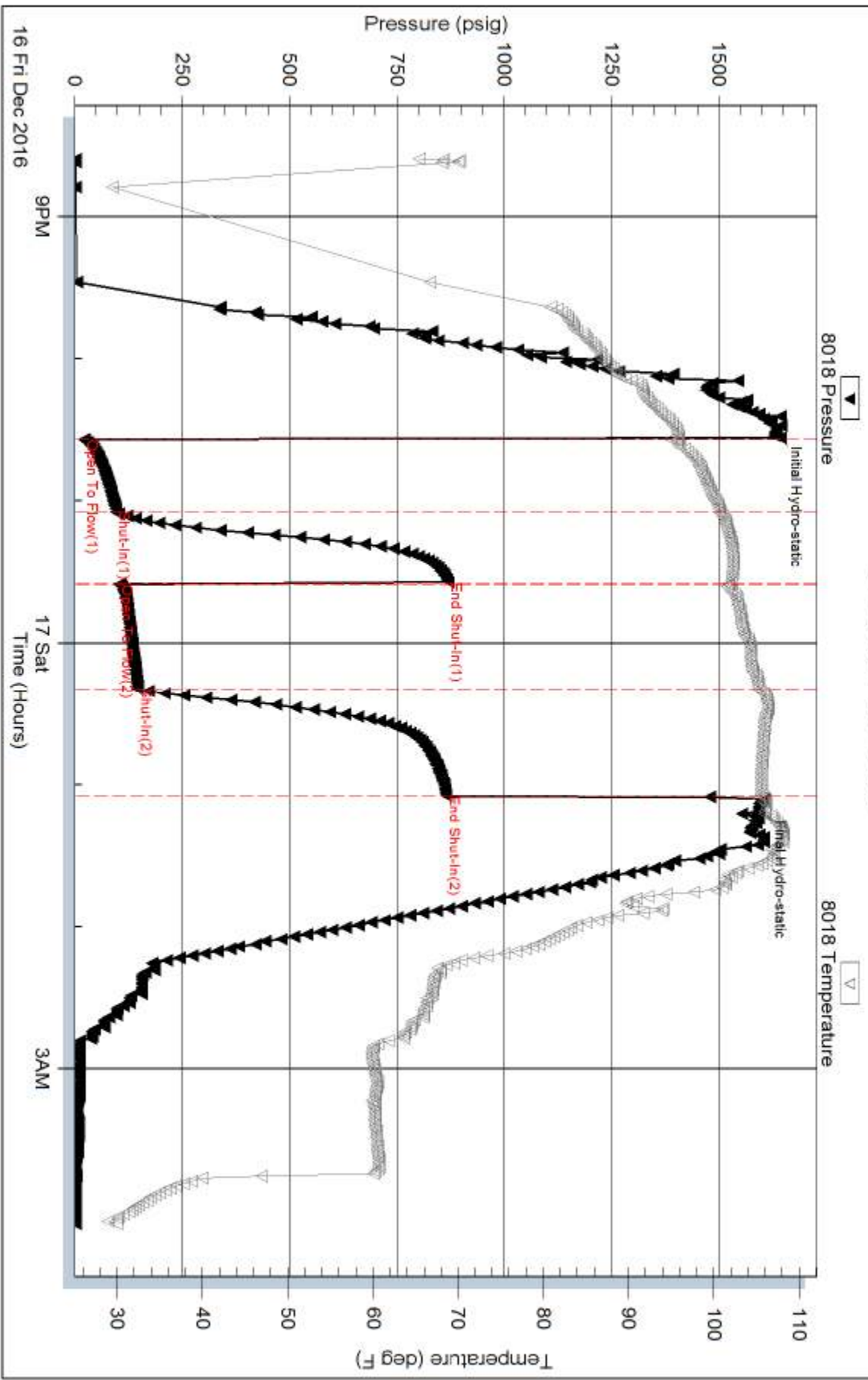
Serial #:

Laboratory Name:

Laboratory Location:

Recovery Comments:

Pressure vs. Time

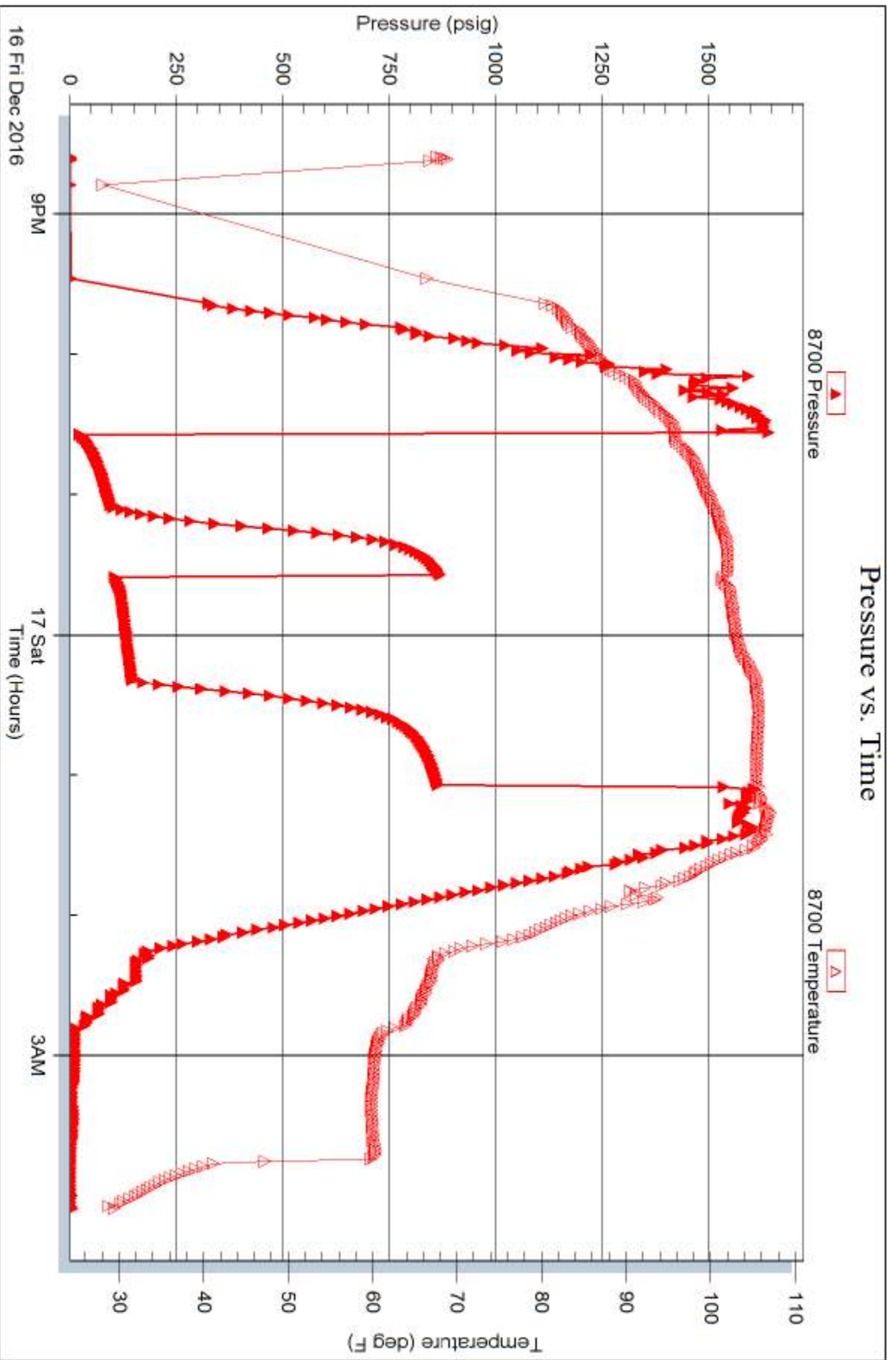


Serial #: 8700

Outside American Warrior Co Inc

Weber 2-7

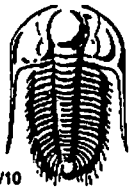
DST Test Number: 1



Tribble Testing, Inc

Ref. No: 64079

Printed: 2016.12.19 @ 13:31:46



TRILOBITE TESTING INC.

1515 Commerce Parkway • Hays, Kansas 67601

Test Ticket

NO. 64079

Well Name & No. Weber 2-2 Test No. 1 Date 12-16-2016
 Company American Warrior Co Inc Elevation 2152 KB 2144 GL
 Address PO Box 399 3118 Cummings Rd. Garden City, Ks 67846
 Co. Rep / Geo. JASON ALM Rig Discovery rig 2
 Location: Sec. 7 Twp. 13^s Rge. 19^w Co. ELLIS State Ks

Interval Tested 3424-3515 Zone Tested TORONTO-LKC "C"
 Anchor Length 91 Drill Pipe Run 3149 Mud Wt. 8.8
 Top Packer Depth 3419 Drill Collars Run - Vis 45
 Bottom Packer Depth 3424 Wt. Pipe Run 280 WL 6.8
 Total Depth 3515 Chlorides 1000 ppm System LCM 2~~#~~
 Blow Description IFF - WEAK BLOW 1/2" TO 3/4" BLOW
ISTP - NO BLOW
FFP - WEAK TO A STRONG BLOW IN 23 MIN
FSTP - NO BLOW

Rec	Feet of	%gas	%oil	%water	%mud
<u>405</u>	<u>GIP</u>				
<u>154</u>	<u>M60</u>	<u>10</u>	<u>60</u>	<u>30</u>	
<u>186</u>	<u>M60</u>	<u>20</u>	<u>65</u>	<u>15</u>	
Rec	Feet of	%gas	%oil	%water	%mud
Rec	Feet of	%gas	%oil	%water	%mud

Rec Total 340 BHT 105 Gravity - API RW - @ - ° F Chlorides - ppm

(A) Initial Hydrostatic 1630 Test 1050 T-On Location 1940
 (B) First Initial Flow 22 Jars - T-Started 2035
 (C) First Final Flow 96 Safety Joint - T-Open 2235
 (D) Initial Shut-In 871 Circ Sub - T-Pulled 0105
 (E) Second Initial Flow 104 Hourly Standby - T-Out 0405 17th
 (F) Second Final Flow 147 Mileage 30RT 45 Comments Loaded Tool 0330
 (G) Final Shut-In 866 Sampler - 12-18-2016
 (H) Final Hydrostatic 1592 Straddle - Ruined Shale Packer -
 Shale Packer - Ruined Packer -
 Extra Packer - Extra Copies -
 Extra Recorder - Sub Total 0
 Day Standby - Total 1095
 Accessibility - MP/DST Disc't -
 Sub Total 1095

Approved By _____ Our Representative Ray Schwager *Thank you*
 Trilobite Testing Inc. shall not be liable for damaged of any kind of the property or personnel of the one for whom a test is made, or for any loss suffered or sustained directly or indirectly, through the use of its equipment, or its statements or opinion concerning the results of any test, tools lost or damaged in the hole shall be paid for at cost by the party for whom the test is made.