



DUAL COMP POROSITY LOG

Company MIKE KELSO OIL, INC.
 Well FHW-WIERMAN #15-1
 Field MCGAUGHEY
 County NESS
 State KANSAS

Company MIKE KELSO OIL, INC.
 Well FHW-WIERMAN #15-1
 Field MCGAUGHEY
 County NESS
 State KANSAS

Location: API #: 15-135-25924-00-00
 982 FNL & 2430' FEL
 SEC 15 TWP 17S RGE 21W
 Permanent Datum GROUND LEVEL Elevation 2203'
 Log Measured From KELLY BUSHING
 Drilling Measured From KELLY BUSHING
 Other Services DIL/MEL
 K.B. 2210'
 D.F. N/A
 G.L. 2203'

Date	9/29/2016						
Run Number	ONE						
Type Log	CNL/CDL						
Depth Driller	4250'						
Depth Logger	4250'						
Bottom Logged Interval	4222'						
Top Logged Interval	3400'						
Type Fluid In Hole	CHEMICAL						
Salinity, PPM CL	6800						
Density	9.4						
Level	FULL						
Max. Rec. Temp. F	119						
Operating Rig Time	3 HOURS						
Equipment -- Location	91 COLBY						
Recorded By	D. SCHMIDT						
Witnessed By	PAT DEENIHAN						
Borehole Record							
Run No.	Bit	From	To	Size	Wgt.	From	To
ONE	12.25"	00'	320'	8.625"	23#	00'	320'
TWO	7.875"	320'	TD				
Casing Record							

<<< Fold Here >>>

All interpretations are opinions based on inferences from electrical or other measurements and Pioneer Wireline Services, LLC cannot and does not guarantee the accuracy or correctness of any interpretation, and Pioneer Wireline Services, LLC will not be liable or responsible for any loss, costs, damages, or expenses incurred or sustained by anyone resulting from any interpretation made by any of our officers, agents or employees.

Comments

N/A DENOTES NOT AVAILABLE OR NON-APPLICABLE.

MCCRACKEN,
 FROM SOUTH END, 3 1/2 WEST,
 SOUTH INTO

Log Measured From: KELLY BUSHING 5 Ft. Above Permanent Datum

THANK YOU FOR USING PIONEER ENERGY SERVICES
www.pioneerenergy.com 785-625-3858

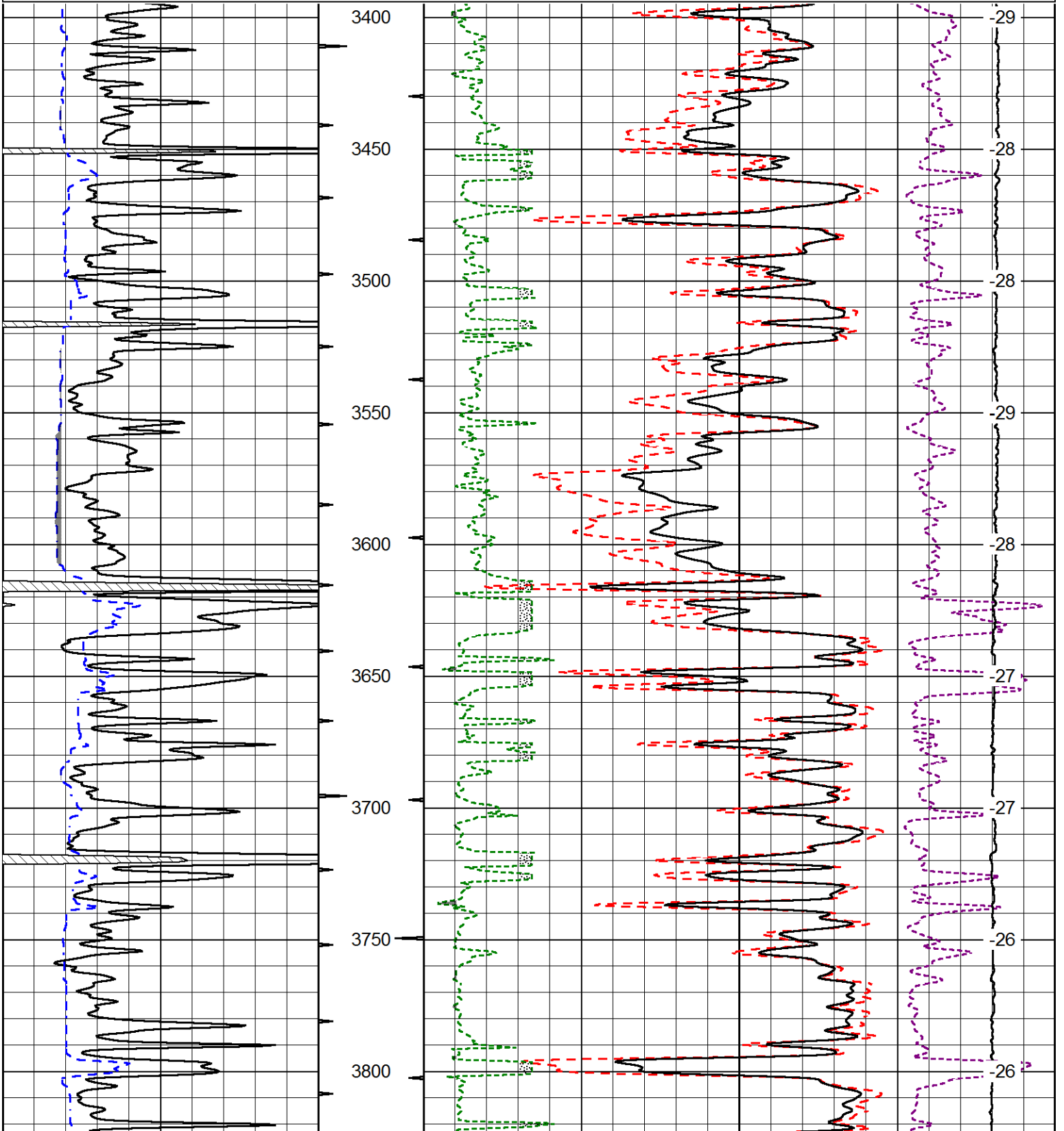
Your Pioneer Energy Services Crew		This Log Record Was Witnessed By	
Engineer: D. SCHMIDT	Operator:	Primary Witness: PAT DEENIHAN	Secondary Witness:
Operator:	Operator:	Secondary Witness:	Secondary Witness:
Operator:		Secondary Witness:	

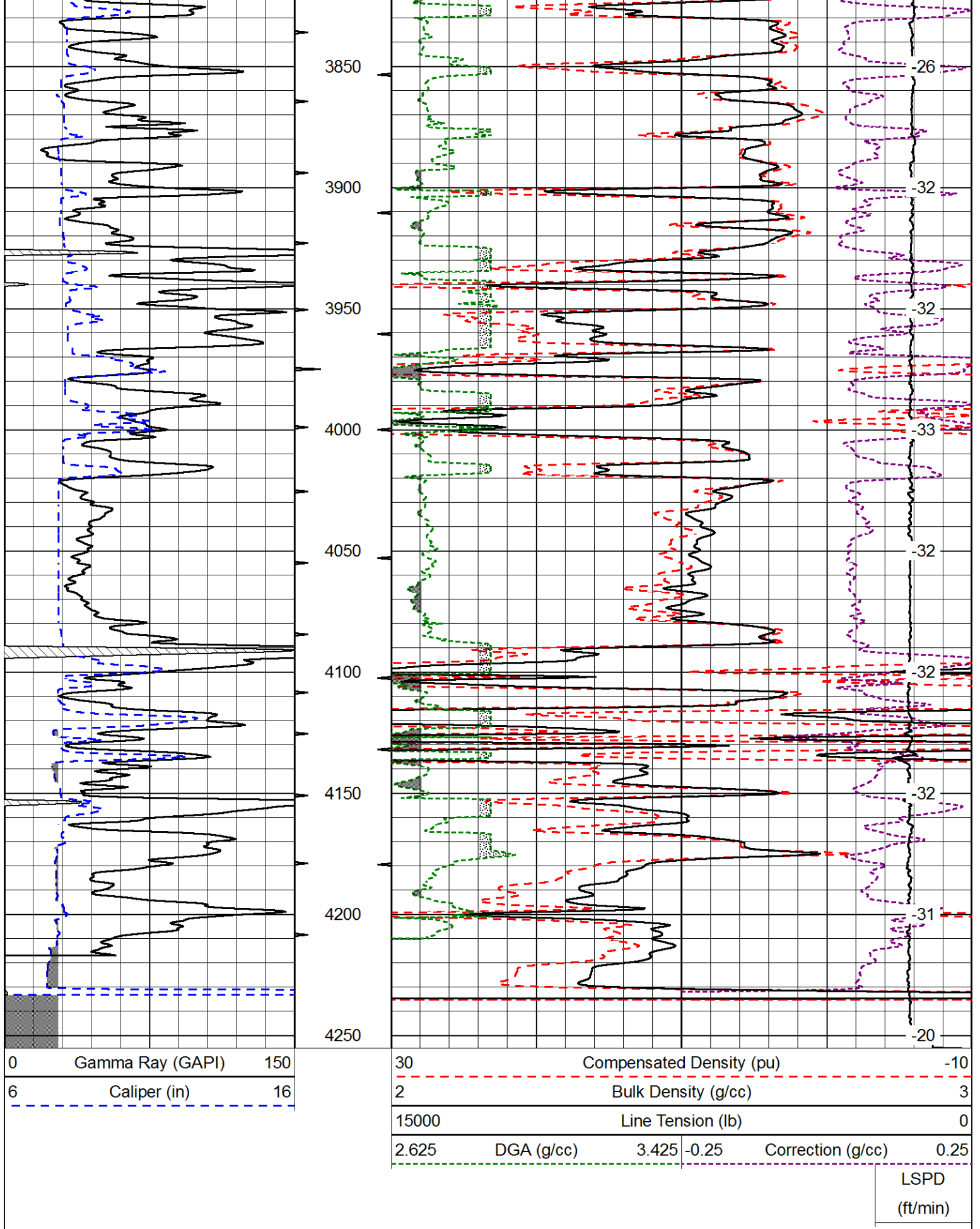
Database File mike_kelso_fhw-wierman_15-1hd.db
 Dataset Pathname DIL/mkstkml
 Presentation Format cdl
 Dataset Creation Thu Sep 29 21:51:59 2016
 Charted by Depth in Feet scaled 1:600

0	Gamma Ray (GAPI)	150
6	Caliper (in)	16

30	Compensated Density (pu)		-10
2	Bulk Density (g/cc)		3
15000	Line Tension (lb)		0
2.625	DGA (g/cc)	3.425	-0.25
	Correction (g/cc)		0.25

LSPD
(ft/min)



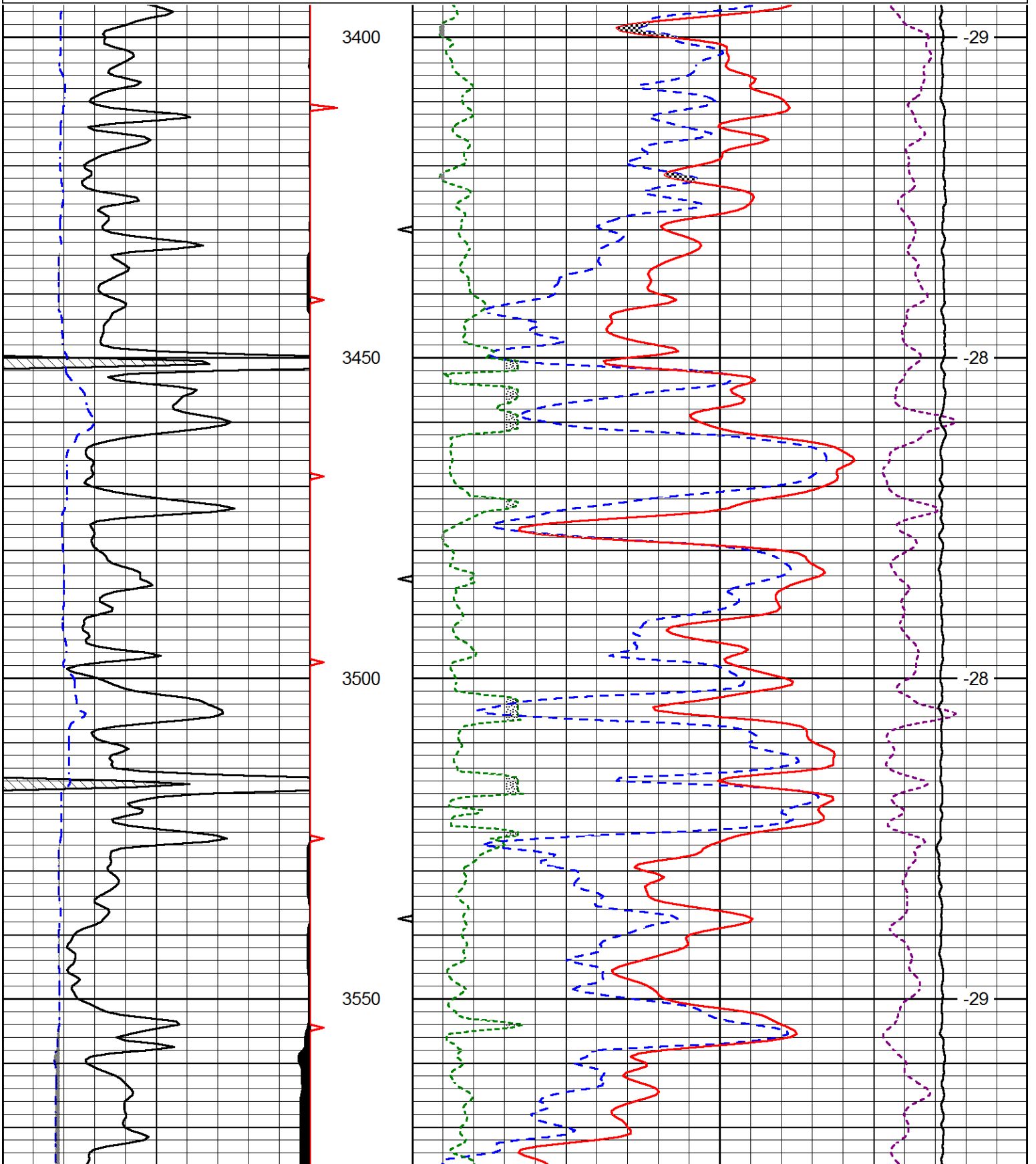


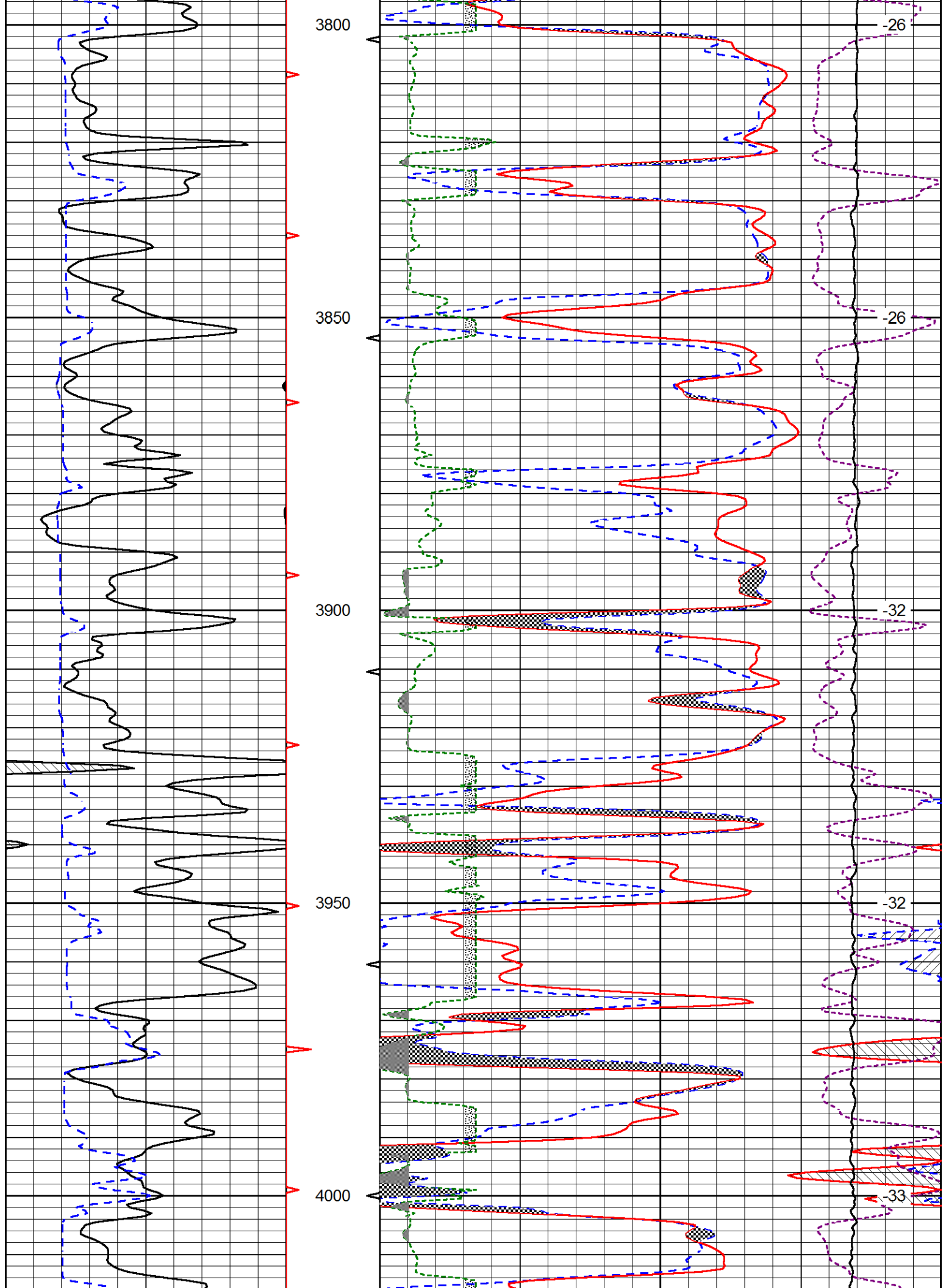
Database File mike_kelso_fhw-wierman_15-1hd.db
 Dataset Pathname DIL/mkstkml
 Presentation Format cndlspec

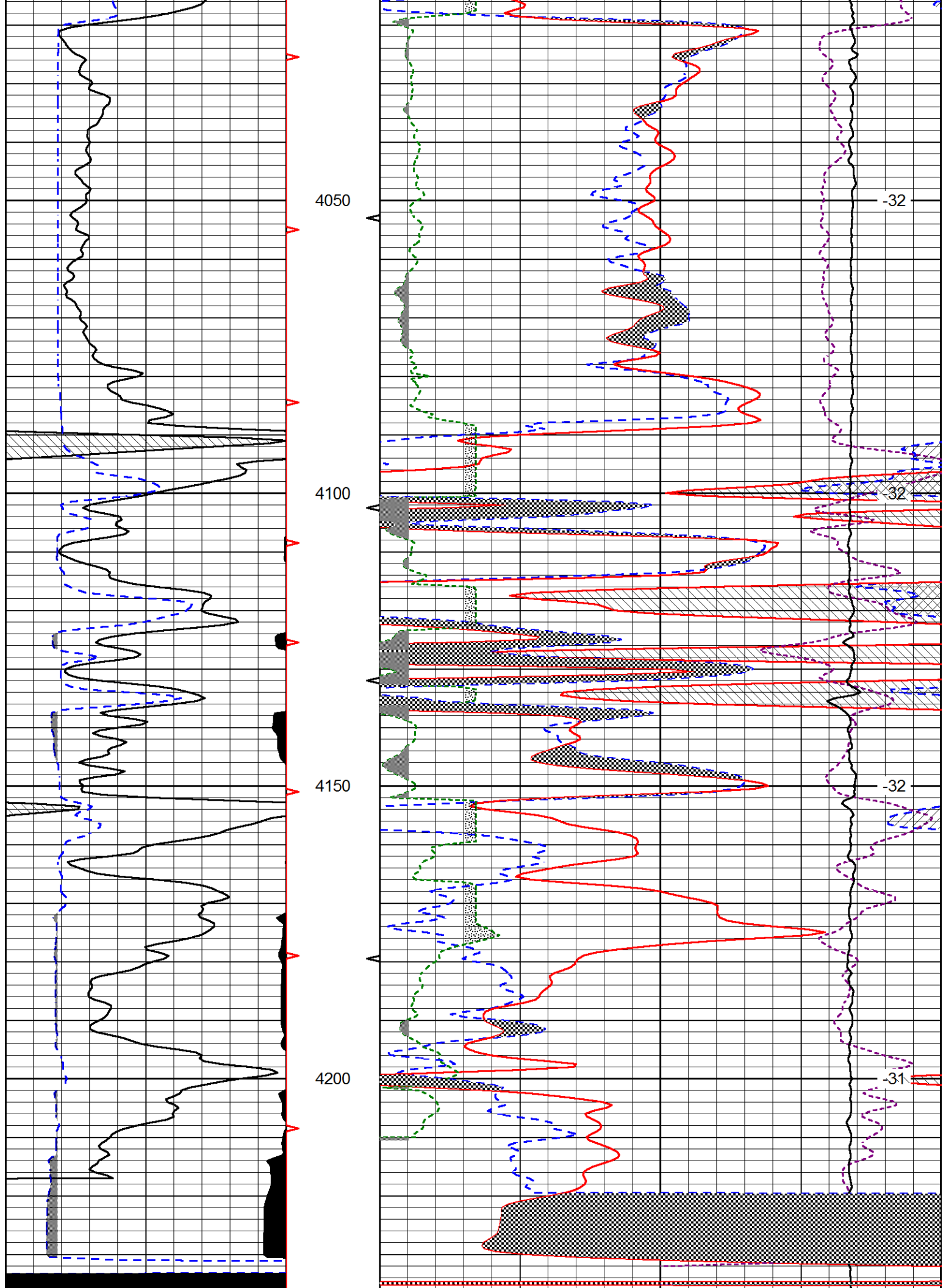
0	Gamma Ray (GAPI)	150
6	Caliper (in)	16

30	CNLS (pu)		-10
30	Compensated Density (2.71 ma) (pu)		-10
10000	Line Tension (lb)		0
2.625	DGA (g/cc)	3.425	-0.25
	Correction (g/cc)		0.25

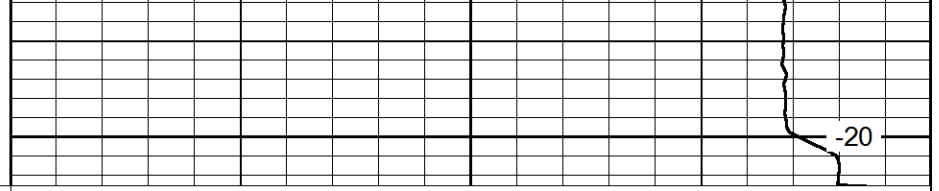
LSPD
(ft/min)







4250



0	Gamma Ray (GAPI)	150
6	Caliper (in)	16

30	CNLS (pu)		-10		
30	Compensated Density (2.71 ma) (pu)		-10		
10000	Line Tension (lb)		0		
2.625	DGA (g/cc)	3.425	-0.25	Correction (g/cc)	0.25

LSPD
(ft/min)