



MICRORESISTIVITY LOG

Company MIKE KELSO OIL, INC.
 Well FHW-WIERMAN #15-1
 Field MCGAUGHEY
 County NESS
 State KANSAS

Company MIKE KELSO OIL, INC.
 Well FHW-WIERMAN #15-1
 Field MCGAUGHEY
 County NESS
 State KANSAS

Location: API #: 15-135-25924-00-00
 982 FNL & 2430' FEL
 SEC 15 TWP 17S RGE 21W
 Permanent Datum GROUND LEVEL Elevation 2203'
 Log Measured From KELLY BUSHING
 Drilling Measured From KELLY BUSHING
 Other Services
 CNL/CDL
 DIL
 Elevation
 K.B. 2210'
 D.F. N/A
 G.L. 2203'

Date	9/29/2016
Run Number	ONE
Depth Driller	4250'
Depth Logger	4250'
Bottom Logged Interval	4249'
Top Log Interval	3400'
Casing Driller	8.625" @ 320'
Casing Logger	324'
Bit Size	7.875"
Type Fluid in Hole	CHEMICAL
Salinity, ppm CL	6800
Density / Viscosity	9.4 51
pH / Fluid Loss	9.0 9.8
Source of Sample	FLOWLINE
Rm @ Meas. Temp	0.50 @ 76
Rmt @ Meas. Temp	0.38 @ 76
Rmc @ Meas. Temp	0.68 @ 76
Source of Rmf / Rmc	CHARTS
Rm @ BHT	0.32 @ 119
Operating Rig Time	3 HOURS
Max Rec. Temp. F	119
Equipment Number	91
Location	COLBY
Recorded By	D. SCHMIDT
Witnessed By	PAT DEENIHAN

<<< Fold Here >>>

All interpretations are opinions based on inferences from electrical or other measurements and Pioneer Wireline Services, LLC cannot and does not guarantee the accuracy or correctness of any interpretation, and Pioneer Wireline Services, LLC will not be liable or responsible for any loss, costs, damages, or expenses incurred or sustained by anyone resulting from any interpretation made by any of our officers, agents or employees.

Comments

N/A DENOTES NOT AVAILABLE OR NON-APPLICABLE.

MCCRACKEN,
 FROM SOUTH END, 3 1/2 WEST,
 SOUTH INTO

Log Measured From: KELLY BUSHING 5 Ft. Above Permanent Datum

THANK YOU FOR USING PIONEER ENERGY SERVICES
www.pioneerenergy.com 785-625-3858

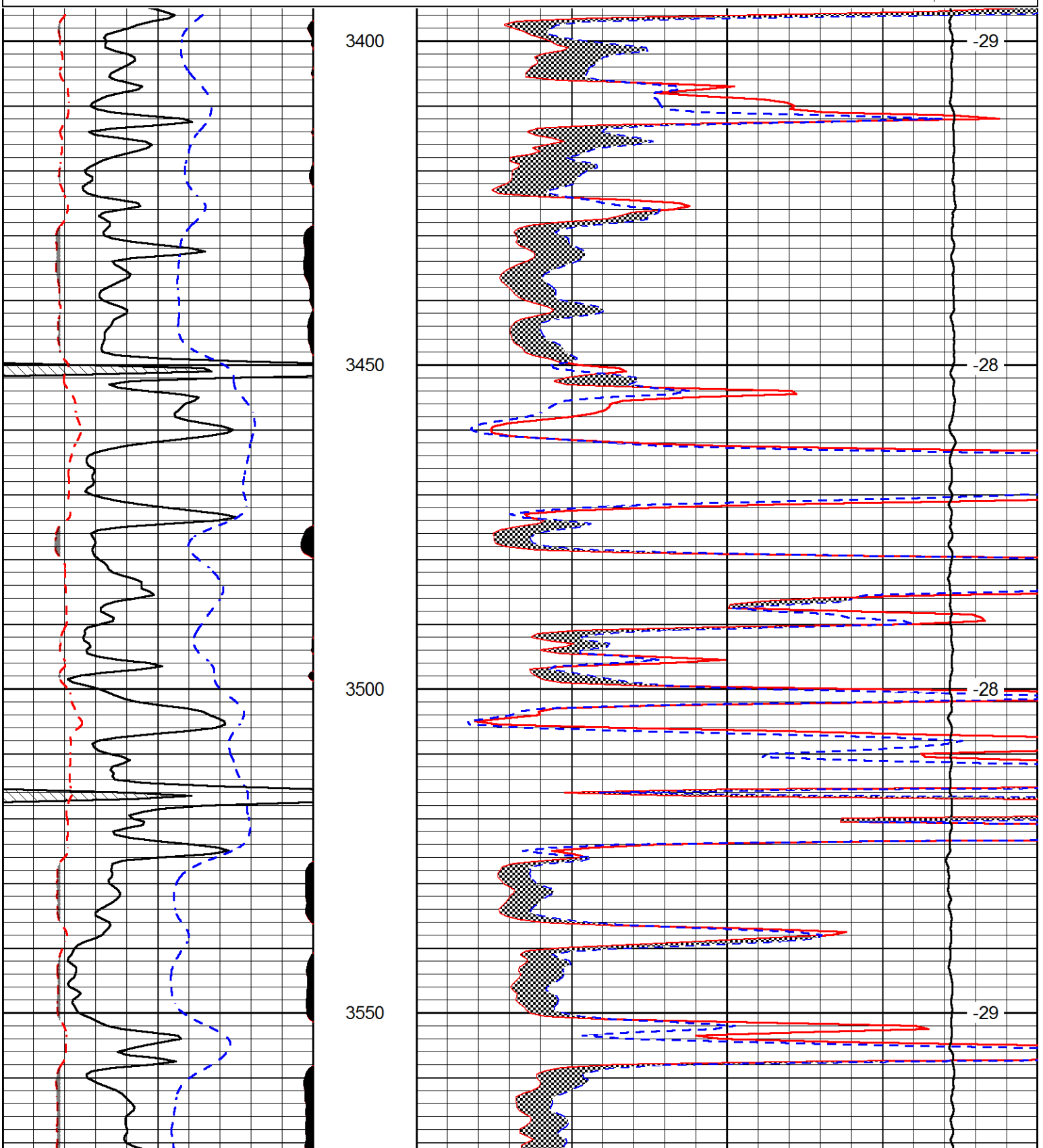
Your Pioneer Energy Services Crew	This Log Record Was Witnessed By
Engineer: D. SCHMIDT	Primary Witness: PAT DEENIHAN
Operator:	Secondary Witness:
Operator:	Secondary Witness:
Operator:	Secondary Witness:

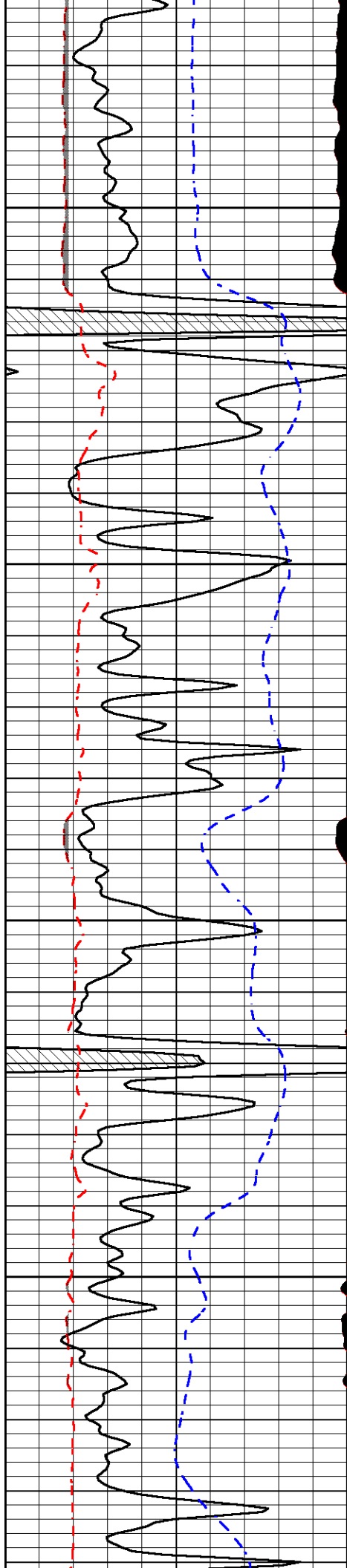
Database File mike_kelso_fhw-wierman_15-1hd.db
 Dataset Pathname DIL/mkstkml
 Presentation Format micro
 Dataset Creation Thu Sep 29 21:51:59 2016
 Charted by Depth in Feet scaled 1:240

0	Gamma Ray (GAPI)	150
6	MCAL (in)	16
2.875	Mud Cake (in)	7.875
-200	SP (mV)	0

0	Micro Inverse 1 X 1 (Ohm-m)	40
0	Micro Normal 2" (Ohm-m)	40
10000	Line Weight (lb)	0

LSPD
(ft/min)



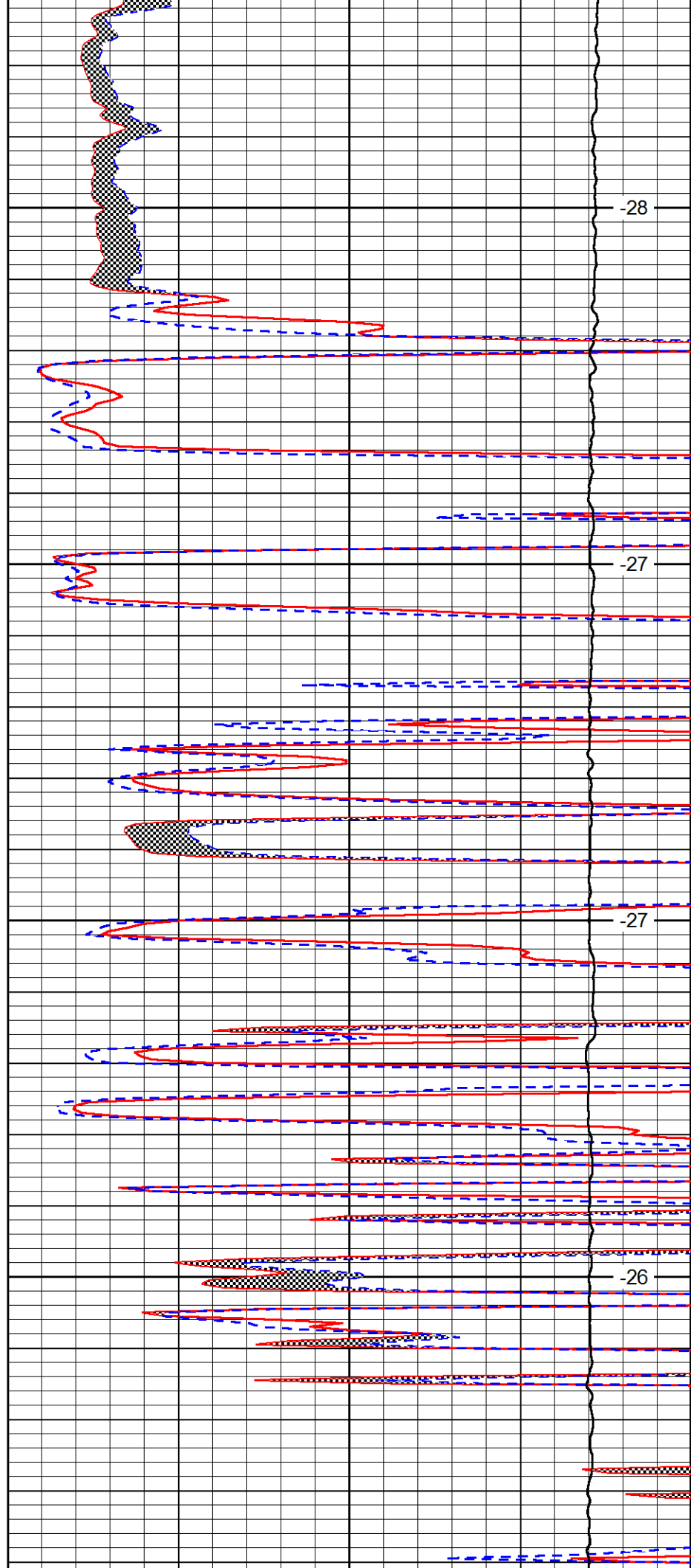


3600

3650

3700

3750

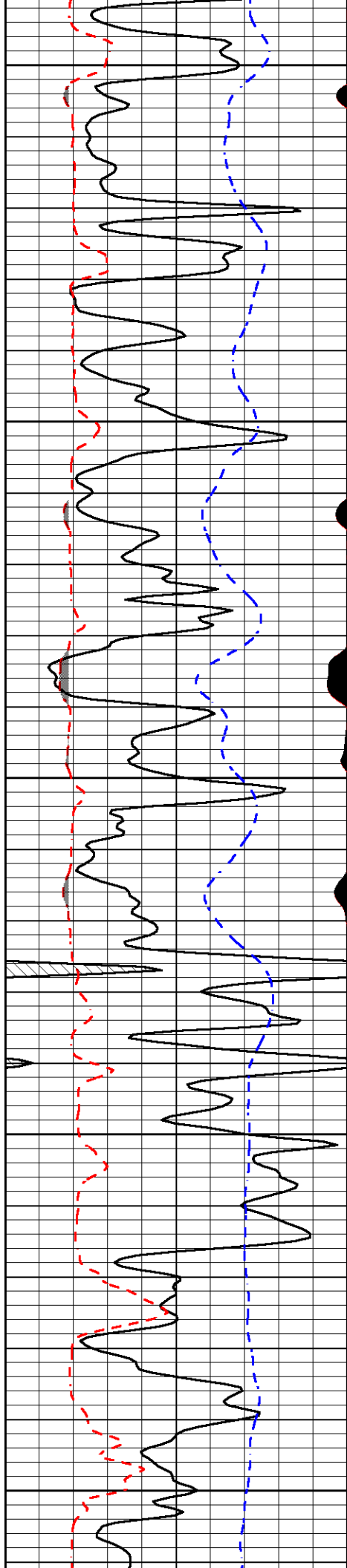


-28

-27

-27

-26



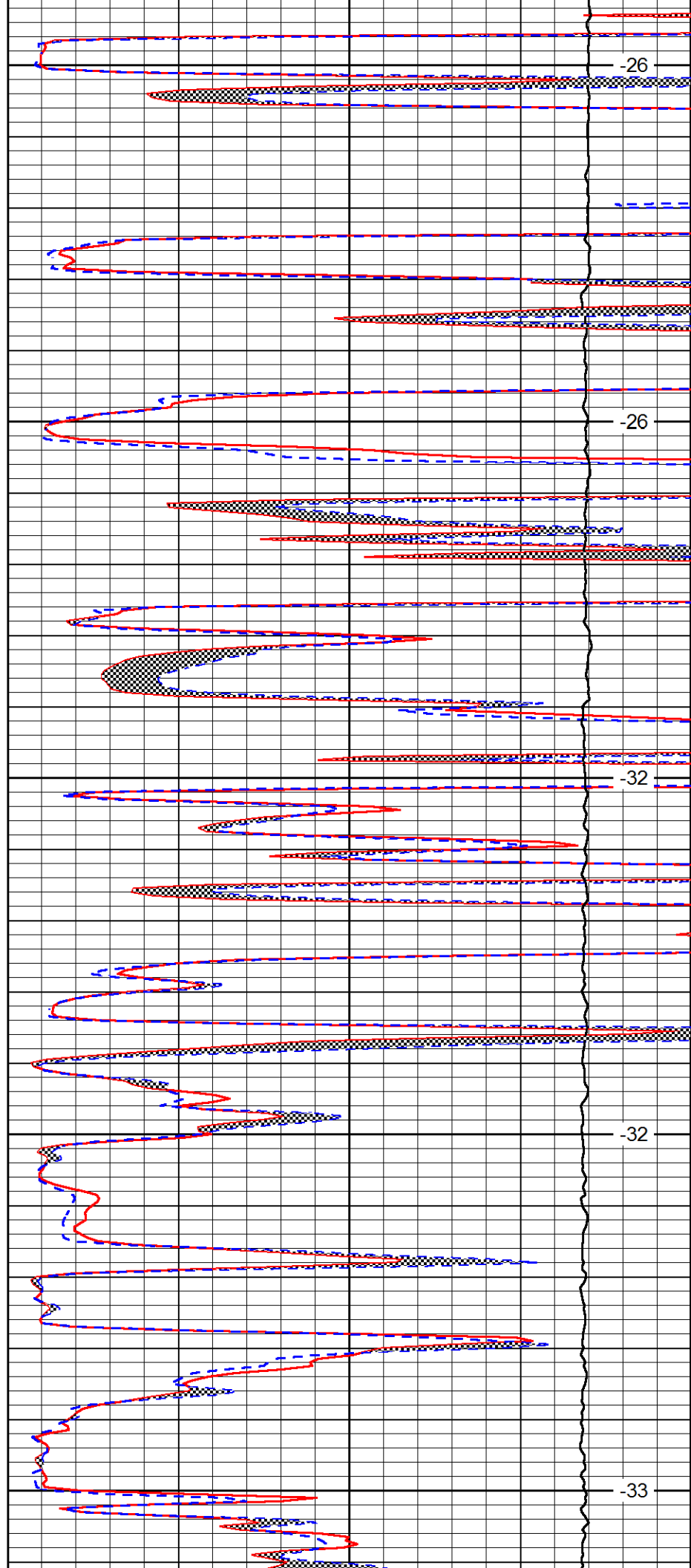
3800

3850

3900

3950

4000



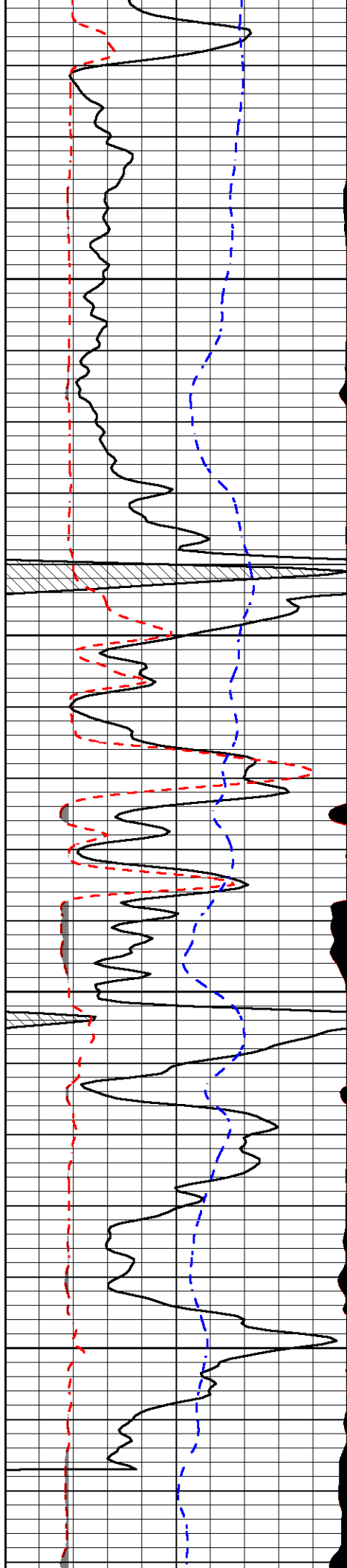
-26

-26

-32

-32

-33

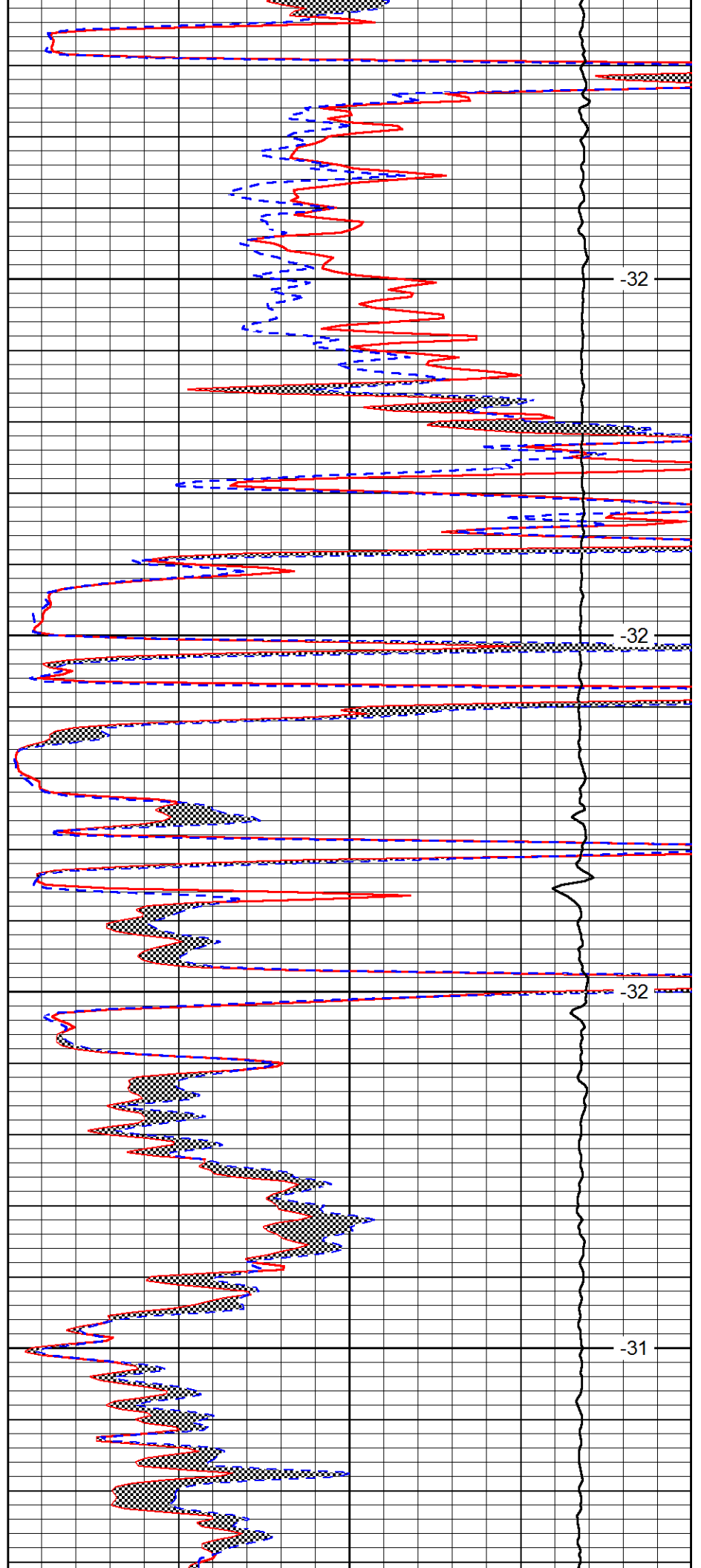


4050

4100

4150

4200

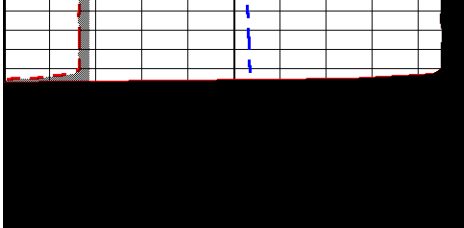


-32

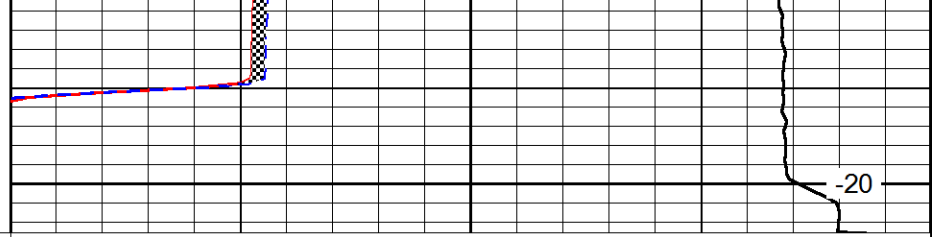
-32

-32

-31



4250



-20

0	Gamma Ray (GAPI)	150
6	MCAL (in)	16
2.875	Mud Cake (in)	7.875
-200	SP (mV)	0

0	Micro Inverse 1 X 1 (Ohm-m)	40
0	Micro Normal 2" (Ohm-m)	40
10000	Line Weight (lb)	0

LSPD
(ft/min)