



DRILL STEM TEST REPORT

Prepared For: **Concorde Resources Corp.**

PO Box 841
Eufaula OK 74432

ATTN: Rich Bell

McDaniel #5 12

12-15s-34w Logan,KS

Start Date: 2016.09.16 @ 23:37:15

End Date: 2016.09.17 @ 06:17:30

Job Ticket #: 65610 DST #: 1

Trilobite Testing, Inc
PO Box 362 Hays, KS 67601
ph: 785-625-4778 fax: 785-625-5620

Printed: 2016.09.22 @ 13:35:28



**TRILOBITE
TESTING, INC**

DRILL STEM TEST REPORT

Concorde Resources Corp.

12-15s-34w Logan,KS

PO Box 841
Eufaula OK 74432

McDaniel #5 12

Job Ticket: 65610

DST#: 1

ATTN: Rich Bell

Test Start: 2016.09.16 @ 23:37:15

GENERAL INFORMATION:

Formation: **LKC L - Altamont A**

Deviated: No Whipstock: ft (KB)

Time Tool Opened: 01:36:15

Time Test Ended: 06:17:30

Test Type: Conventional Bottom Hole (Initial)

Tester: Mike Roberts

Unit No: 81

Interval: 4069.00 ft (KB) To 4190.00 ft (KB) (TVD)

Reference Elevations: 2860.00 ft (KB)

Total Depth: 4190.00 ft (KB) (TVD)

2850.00 ft (CF)

Hole Diameter: 7.88 inches Hole Condition: Poor

KB to GR/CF: 10.00 ft

Serial #: 6751 Outside

Press@RunDepth: 78.58 psig @ 4075.00 ft (KB)

Capacity: 8000.00 psig

Start Date: 2016.09.16

End Date:

2016.09.17

Last Calib.:

2016.09.17

Start Time: 23:37:15

End Time:

06:17:30

Time On Btm:

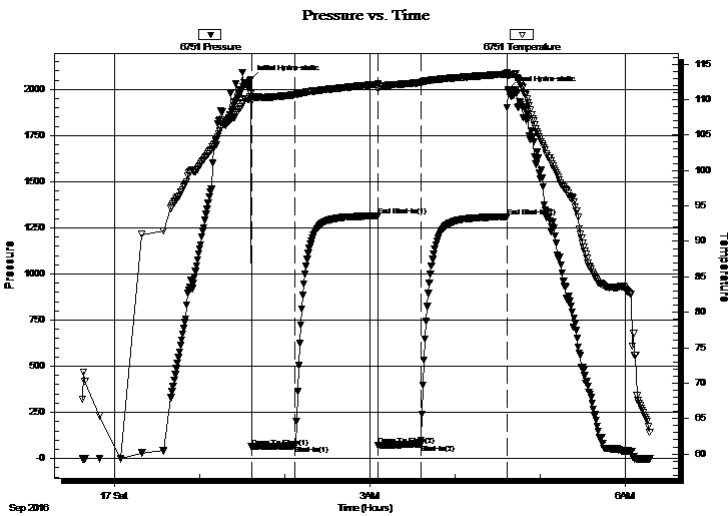
2016.09.17 @ 01:36:00

Time Off Btm:

2016.09.17 @ 04:37:30

TEST COMMENT: IF: Built to 1" blow
IS: No return blow
FF: No blow
FS: No return blow

PRESSURE SUMMARY



Time (Min.)	Pressure (psig)	Temp (deg F)	Annotation
0	2050.85	110.77	Initial Hydro-static
1	63.28	109.72	Open To Flow (1)
31	69.73	110.66	Shut-In(1)
90	1315.09	112.17	End Shut-In(1)
90	72.15	111.56	Open To Flow (2)
120	78.58	112.40	Shut-In(2)
181	1310.00	113.60	End Shut-In(2)
182	1995.83	113.41	Final Hydro-static

Recovery

Length (ft)	Description	Volume (bbl)
30.00	mud w ith oil spots 100% m	0.42

Gas Rates

Choke (inches)	Pressure (psig)	Gas Rate (Mcf/d)



**TRILOBITE
TESTING, INC.**

DRILL STEM TEST REPORT

TOOL DIAGRAM

Concorde Resources Corp.

12-15s-34w Logan,KS

PO Box 841
Eufaula OK 74432

McDaniel #5 12

Job Ticket: 65610

DST#: 1

ATTN: Rich Bell

Test Start: 2016.09.16 @ 23:37:15

Tool Information

Drill Pipe:	Length: 4057.00 ft	Diameter: 3.80 inches	Volume: 56.91 bbl	Tool Weight: 1500.00 lb
Heavy Wt. Pipe:	Length: 0.00 ft	Diameter: 0.00 inches	Volume: 0.00 bbl	Weight set on Packer: 20000.00 lb
Drill Collar:	Length: 0.00 ft	Diameter: 0.00 inches	Volume: 0.00 bbl	Weight to Pull Loose: 60000.00 lb
			<u>Total Volume: 56.91 bbl</u>	Tool Chased 0.00 ft
Drill Pipe Above KB:	8.00 ft			String Weight: Initial 42000.00 lb
Depth to Top Packer:	4069.00 ft			Final 42000.00 lb
Depth to Bottom Packer:	ft			
Interval between Packers:	121.00 ft			
Tool Length:	141.00 ft			
Number of Packers:	2	Diameter: 6.75 inches		

Tool Comments:

Tool Description

Tool Description	Length (ft)	Serial No.	Position	Depth (ft)	Accum. Lengths
Change Over Sub	1.00			4050.00	
Shut In Tool	5.00			4055.00	
Hydraulic tool	5.00			4060.00	
Packer	5.00			4065.00	20.00 Bottom Of Top Packer
Packer	4.00			4069.00	
Stubb	1.00			4070.00	
Perforations	5.00			4075.00	
Recorder	0.00	8672	Inside	4075.00	
Recorder	0.00	6751	Outside	4075.00	
Change Over Sub	1.00			4076.00	
Drill Pipe	93.00			4169.00	
Change Over Sub	1.00			4170.00	
Perforations	15.00			4185.00	
Bullnose	5.00			4190.00	121.00 Bottom Packers & Anchor

Total Tool Length: 141.00



**TRILOBITE
TESTING, INC**

DRILL STEM TEST REPORT

FLUID SUMMARY

Concorde Resources Corp.

12-15s-34w Logan,KS

PO Box 841
Eufaula OK 74432

McDaniel #5 12

Job Ticket: 65610

DST#: 1

ATTN: Rich Bell

Test Start: 2016.09.16 @ 23:37:15

Mud and Cushion Information

Mud Type: Gel Chem

Cushion Type:

Oil API:

0 deg API

Mud Weight: 9.00 lb/gal

Cushion Length:

ft

Water Salinity:

0 ppm

Viscosity: 54.00 sec/qt

Cushion Volume:

bbbl

Water Loss: 6.77 in³

Gas Cushion Type:

Resistivity: 0.00 ohm.m

Gas Cushion Pressure:

psig

Salinity: 2000.00 ppm

Filter Cake: 1.00 inches

Recovery Information

Recovery Table

Length ft	Description	Volume bbl
30.00	mud w ith oil spots 100% m	0.421

Total Length: 30.00 ft Total Volume: 0.421 bbl

Num Fluid Samples: 0

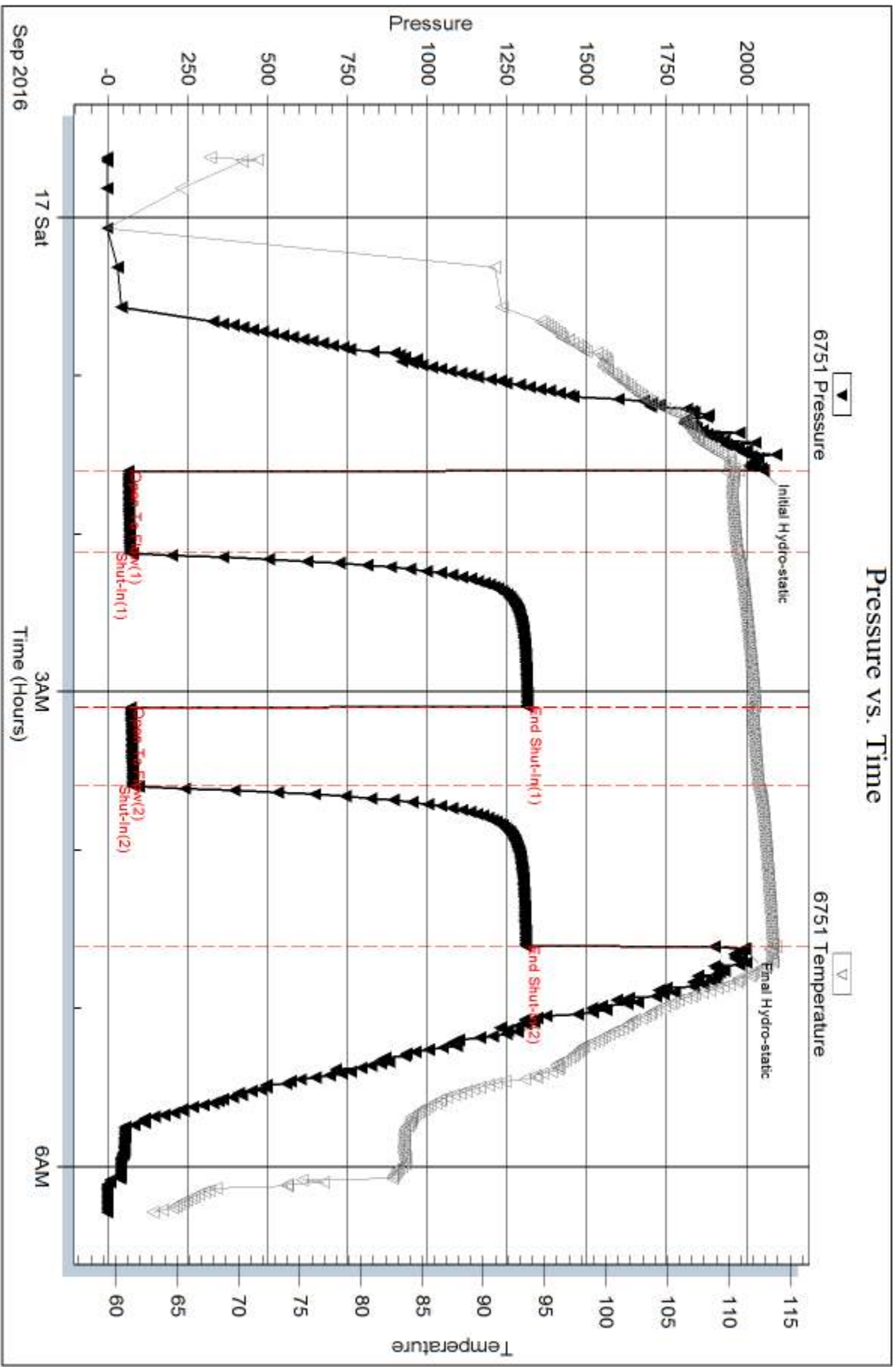
Num Gas Bombs: 0

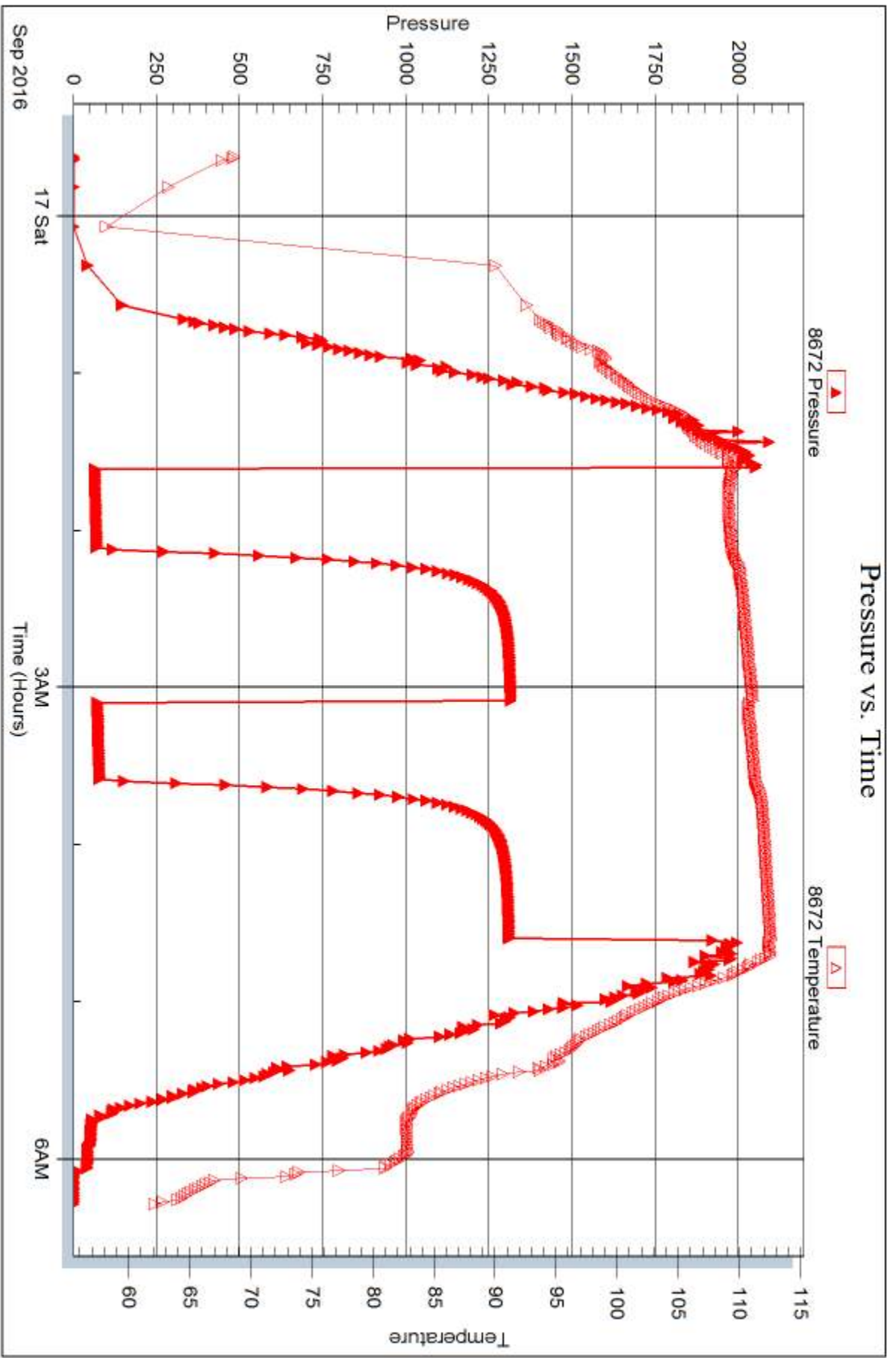
Serial #:

Laboratory Name:

Laboratory Location:

Recovery Comments:







DRILL STEM TEST REPORT

Prepared For: **Concorde Resources Corp.**

PO Box 841
Eufaula OK 74432

ATTN: Rich Bell

McDaniel #5 12

12-15s-34w Logan,KS

Start Date: 2016.09.18 @ 03:03:15

End Date: 2016.09.18 @ 09:07:15

Job Ticket #: 65611 DST #: 2

Trilobite Testing, Inc

PO Box 362 Hays, KS 67601

ph: 785-625-4778 fax: 785-625-5620

Printed: 2016.09.22 @ 13:35:15

Concorde Resources Corp.

12-15s-34w Logan,KS

McDaniel #5 12

DST # 2

Myrick Station - Ft.

2016.09.18



**TRILOBITE
TESTING, INC**

DRILL STEM TEST REPORT

Concorde Resources Corp.

12-15s-34w Logan,KS

PO Box 841
Eufaula OK 74432

McDaniel #5 12

Job Ticket: 65611

DST#: 2

ATTN: Rich Bell

Test Start: 2016.09.18 @ 03:03:15

GENERAL INFORMATION:

Formation: **Myrick Station - Ft.**

Deviated: No Whipstock: ft (KB)

Time Tool Opened: 04:32:00

Time Test Ended: 09:07:15

Test Type: Conventional Bottom Hole (Reset)

Tester: Mike Roberts

Unit No: 81

Interval: 4274.00 ft (KB) To 4320.00 ft (KB) (TVD)

Reference Elevations: 2860.00 ft (KB)

Total Depth: 4320.00 ft (KB) (TVD)

2850.00 ft (CF)

Hole Diameter: 7.88 inches Hole Condition: Poor

KB to GR/CF: 10.00 ft

Serial #: 6751 Outside

Press@RunDepth: 17.17 psig @ 4281.00 ft (KB)

Capacity: 8000.00 psig

Start Date: 2016.09.18

End Date:

2016.09.18

Last Calib.:

2016.09.18

Start Time: 03:03:15

End Time:

09:07:15

Time On Btm:

2016.09.18 @ 04:31:45

Time Off Btm:

2016.09.18 @ 07:32:15

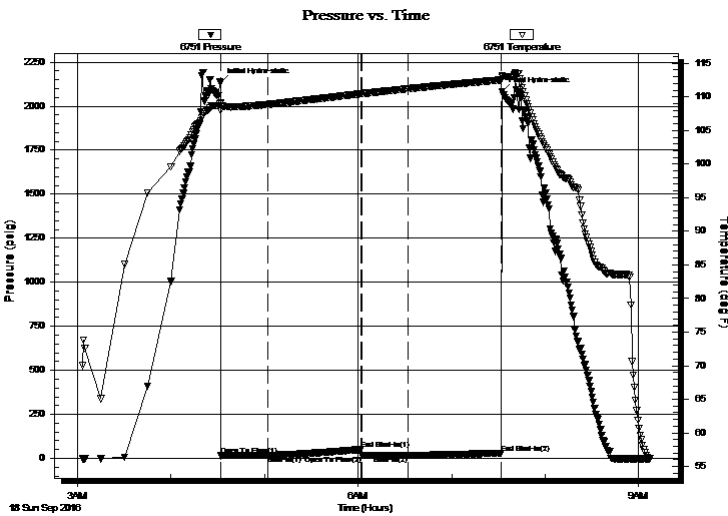
TEST COMMENT: IF: Built to weak surface blow

IS: No return blow

FF: No blow

FS: No return blow

PRESSURE SUMMARY



Time (Min.)	Pressure (psig)	Temp (deg F)	Annotation
0	2132.94	109.06	Initial Hydro-static
1	15.71	107.99	Open To Flow (1)
31	17.07	108.89	Shut-In(1)
91	51.86	110.47	End Shut-In(1)
91	16.71	110.46	Open To Flow (2)
121	17.17	111.22	Shut-In(2)
180	30.58	112.52	End Shut-In(2)
181	2081.39	113.13	Final Hydro-static

Recovery

Length (ft)	Description	Volume (bbl)
2.00	mud 100% m	0.03

* Recovery from multiple tests

Gas Rates

Choke (inches)	Pressure (psig)	Gas Rate (Mcf/d)



**TRILOBITE
TESTING, INC**

DRILL STEM TEST REPORT

Concorde Resources Corp.

12-15s-34w Logan,KS

PO Box 841
Eufaula OK 74432

McDaniel #5 12

Job Ticket: 65611

DST#: 2

ATTN: Rich Bell

Test Start: 2016.09.18 @ 03:03:15

GENERAL INFORMATION:

Formation: **Myrick Station - Ft.**

Deviated: No Whipstock: ft (KB)

Time Tool Opened: 04:32:00

Time Test Ended: 09:07:15

Test Type: Conventional Bottom Hole (Reset)

Tester: Mike Roberts

Unit No: 81

Interval: 4274.00 ft (KB) To 4320.00 ft (KB) (TVD)

Reference Elevations: 2860.00 ft (KB)

Total Depth: 4320.00 ft (KB) (TVD)

2850.00 ft (CF)

Hole Diameter: 7.88 inches Hole Condition: Poor

KB to GR/CF: 10.00 ft

Serial #: 8672 Inside

Press@RunDepth: psig @ 4281.00 ft (KB)

Capacity: 8000.00 psig

Start Date: 2016.09.18

End Date: 2016.09.18

Last Calib.: 2016.09.18

Start Time: 03:03:15

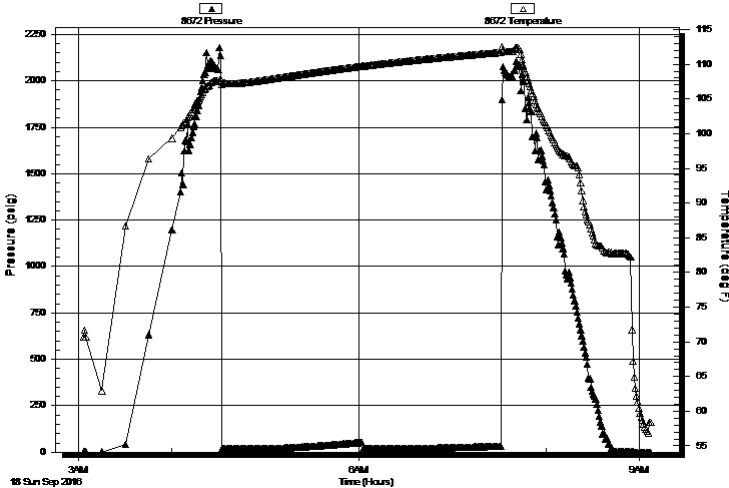
End Time: 09:07:00

Time On Btm:

Time Off Btm:

TEST COMMENT: IF: Built to weak surface blow
IS: No return blow
FF: No blow
FS: No return blow

Pressure vs. Time



PRESSURE SUMMARY

Time (Min.)	Pressure (psig)	Temp (deg F)	Annotation

Recovery

Gas Rates

Length (ft)	Description	Volume (bbl)
2.00	mud 100% m	0.03

	Choke (inches)	Pressure (psig)	Gas Rate (Mcf/d)

* Recovery from multiple tests



**TRILOBITE
TESTING, INC**

DRILL STEM TEST REPORT

TOOL DIAGRAM

Concorde Resources Corp.

12-15s-34w Logan,KS

PO Box 841
Eufaula OK 74432

McDaniel #5 12

Job Ticket: 65611

DST#: 2

ATTN: Rich Bell

Test Start: 2016.09.18 @ 03:03:15

Tool Information

Drill Pipe:	Length: 4278.00 ft	Diameter: 3.80 inches	Volume: 60.01 bbl	Tool Weight: 1500.00 lb
Heavy Wt. Pipe:	Length: 0.00 ft	Diameter: 0.00 inches	Volume: 0.00 bbl	Weight set on Packer: 20000.00 lb
Drill Collar:	Length: 0.00 ft	Diameter: 0.00 inches	Volume: 0.00 bbl	Weight to Pull Loose: 70000.00 lb
			<u>Total Volume: 60.01 bbl</u>	Tool Chased 0.00 ft
Drill Pipe Above KB:	24.00 ft			String Weight: Initial 42000.00 lb
Depth to Top Packer:	4274.00 ft			Final 42000.00 lb
Depth to Bottom Packer:	ft			
Interval between Packers:	46.00 ft			
Tool Length:	66.00 ft			
Number of Packers:	2	Diameter: 6.75 inches		

Tool Comments:

Tool Description

Tool Description	Length (ft)	Serial No.	Position	Depth (ft)	Accum. Lengths
Change Over Sub	1.00			4255.00	
Shut In Tool	5.00			4260.00	
Hydraulic tool	5.00			4265.00	
Packer	5.00			4270.00	20.00 Bottom Of Top Packer
Packer	4.00			4274.00	
Stubb	1.00			4275.00	
Perforations	6.00			4281.00	
Recorder	0.00	8672	Inside	4281.00	
Recorder	0.00	6751	Outside	4281.00	
Change Over Sub	1.00			4282.00	
Drill Pipe	32.00			4314.00	
Change Over Sub	1.00			4315.00	
Bullnose	5.00			4320.00	46.00 Bottom Packers & Anchor

Total Tool Length: 66.00



**TRILOBITE
TESTING, INC**

DRILL STEM TEST REPORT

FLUID SUMMARY

Concorde Resources Corp.

12-15s-34w Logan,KS

PO Box 841
Eufaula OK 74432

McDaniel #5 12

Job Ticket: 65611

DST#: 2

ATTN: Rich Bell

Test Start: 2016.09.18 @ 03:03:15

Mud and Cushion Information

Mud Type: Gel Chem

Cushion Type:

Oil API:

0 deg API

Mud Weight: 9.00 lb/gal

Cushion Length:

ft

Water Salinity:

0 ppm

Viscosity: 57.00 sec/qt

Cushion Volume:

bbf

Water Loss: 7.09 in³

Gas Cushion Type:

Resistivity: 0.00 ohm.m

Gas Cushion Pressure:

psig

Salinity: 2200.00 ppm

Filter Cake: 1.00 inches

Recovery Information

Recovery Table

Length ft	Description	Volume bbf
2.00	mud 100%m	0.028

Total Length: 2.00 ft Total Volume: 0.028 bbf

Num Fluid Samples: 0

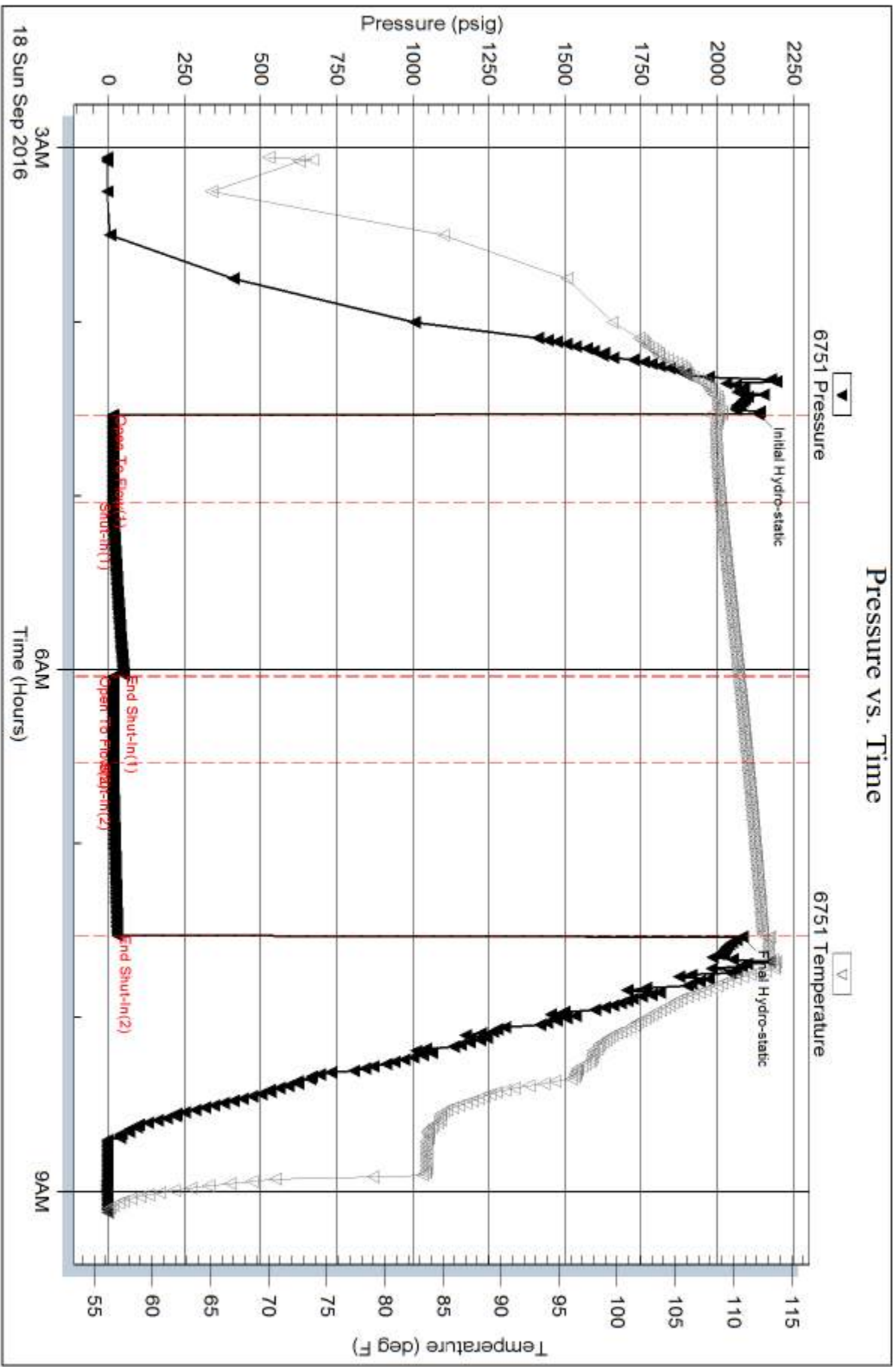
Num Gas Bombs: 0

Serial #:

Laboratory Name:

Laboratory Location:

Recovery Comments:



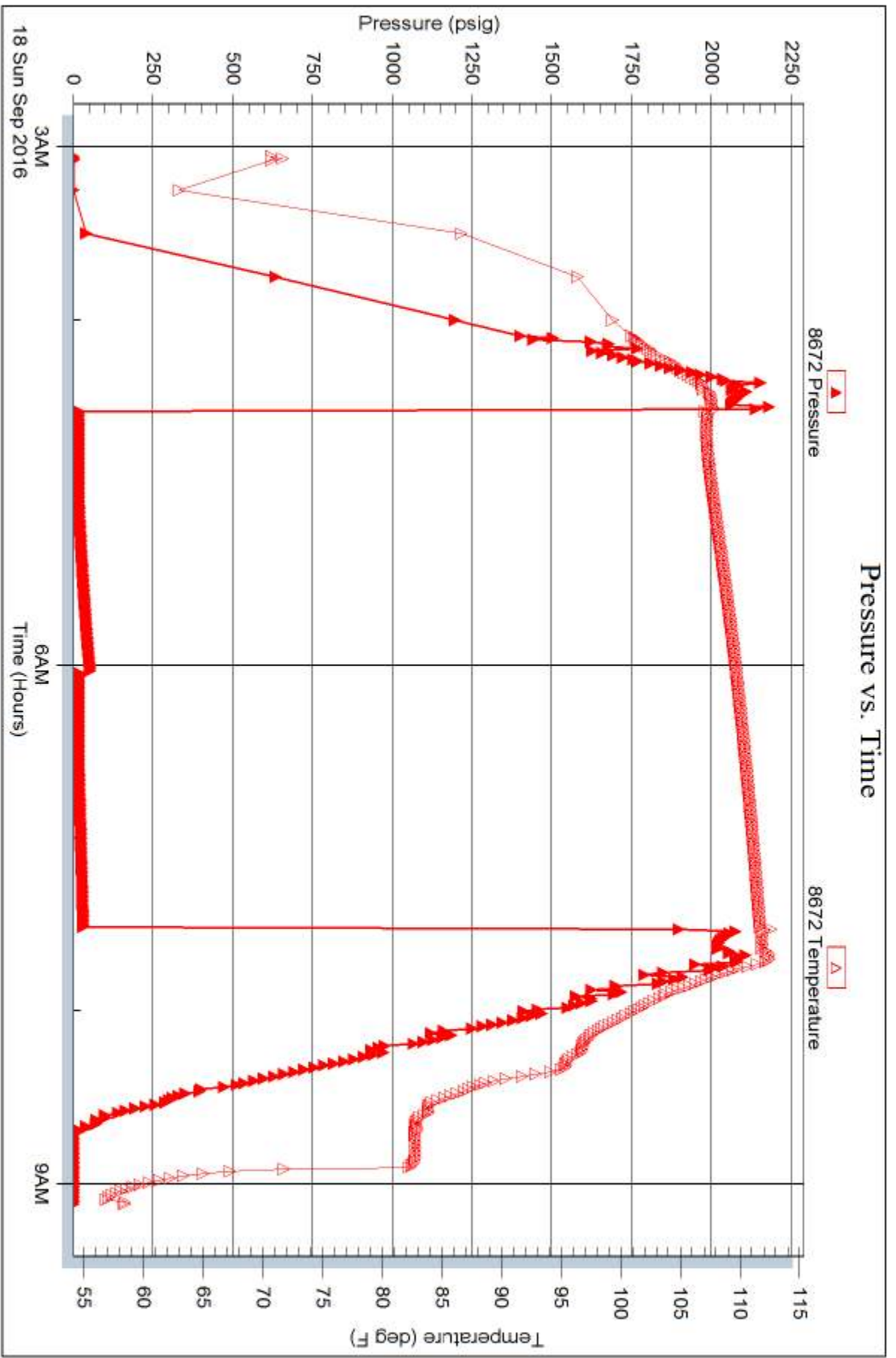
Serial #: 8672

Inside

Concorde Resources Corp.

McDaniel #5 12

DST Test Number: 2





TRILOBITE TESTING INC.

1515 Commerce Parkway • Hays, Kansas 67601

Test Ticket

NO. **65610**

Well Name & No. McDaniel #5-12 Test No. 1 Date 9-16-16
 Company Concorde Resources Corp. Elevation 2860 KB 2850 GL
 Address 111 S. Main St. P.O. Box 891 Eufaula OK 74432
 Co. Rep / Geo. Rich Bell Rig Southwind 1
 Location: Sec. 12 Twp. 15S Rge. 34W Co. Logan State KS

Interval Tested 4069-4190 Zone Tested LKCL - Altomont A
 Anchor Length 121 Drill Pipe Run 4057 Mud Wt. 9.1
 Top Packer Depth 4064 Drill Collars Run 0 Vis 54
 Bottom Packer Depth 4069 Wt. Pipe Run 0 WL 6.8
 Total Depth 4190 Chlorides 2000 ppm System LCM 1

Blow Description IF: Built to 1" Blow
IS: No Return Blow
FF: No Blow
FS: No Return Blow

Rec	Feet of	%gas	%oil	%water	%mud
<u>30</u>	<u>MUD with oil spots</u>			<u>100</u>	
Rec	Feet of	%gas	%oil	%water	%mud
Rec	Feet of	%gas	%oil	%water	%mud
Rec	Feet of	%gas	%oil	%water	%mud
Rec	Feet of	%gas	%oil	%water	%mud

Rec Total 30 BHT 113 Gravity — API RW — @ — °F Chlorides — ppm

(A) Initial Hydrostatic 2050
 (B) First Initial Flow 62
 (C) First Final Flow 69
 (D) Initial Shut-In 1315
 (E) Second Initial Flow 72
 (F) Second Final Flow 78
 (G) Final Shut-In 1310
 (H) Final Hydrostatic 1995
 Initial Open 30
 Initial Shut-In 60
 Final Flow 30
 Final Shut-In 60

Test #1150.00
 Jars
 Safety Joint
 Circ Sub NC
 Hourly Standby
 Mileage 90 RT- #67.50
 Sampler
 Straddle
 Shale Packer
 Extra Packer
 Extra Recorder
 Day Standby
 Accessibility
 Sub Total #1217.50

T-On Location 22:00
 T-Started 23:37
 T-Open 01:36
 T-Pulled 04:36
 T-Out 06:17
 Comments _____
 Ruined Shale Packer
 Ruined Packer
 Extra Copies
 Sub Total _____
 Total 1217.50
 MP/DST Disc't _____



TRILOBITE TESTING INC.

1515 Commerce Parkway • Hays, Kansas 67601

Test Ticket

NO. **65611**

Well Name & No. Mc Daniel #5-12 Test No. 2 Date 9-17-16
 Company Concorde Resources Corp. Elevation 2860 KB 2850 GL
 Address 111 S. Main St. P.O. Box 841 Eufaula OK 74432
 Co. Rep / Geo. Rich Bell Rig Southwind 1
 Location: Sec. 12 Twp. 15S Rge. 34W Co. Logan State KS

Interval Tested 4274-4320 Zone Tested Myrick Stn - Ft. Scott
 Anchor Length 46 Drill Pipe Run 4278 Mud Wt. 9.3
 Top Packer Depth 4269 Drill Collars Run 0 Vis 57
 Bottom Packer Depth 4274 Wt. Pipe Run 0 WL 7.1
 Total Depth 4320 Chlorides 2200 ppm System LCM 1

Blow Description IF: Built to weak Surface Blow
IS: No Return Blow
FF: No Blow
FS: No Return Blow

Rec	Feet of	%gas	%oil	%water	%mud
<u>2</u>	<u>MUD</u>			<u>100</u>	
Rec	Feet of	%gas	%oil	%water	%mud
Rec	Feet of	%gas	%oil	%water	%mud
Rec	Feet of	%gas	%oil	%water	%mud
Rec	Feet of	%gas	%oil	%water	%mud

Rec Total 2 BHT 114 Gravity - API RW - @ - °F Chlorides - ppm
 (A) Initial Hydrostatic 2132 Test \$1150.00/- T-On Location 00:20
 (B) First Initial Flow 15 Jars - T-Started 03:03
 (C) First Final Flow 17 Safety Joint - T-Open 04:32
 (D) Initial Shut-In 51 Circ Sub NC T-Pulled 07:32
 (E) Second Initial Flow 16 Hourly Standby - T-Out 09:07
 (F) Second Final Flow 17 Mileage 90RT = \$67.50/- Comments Loaded 09:30
 (G) Final Shut-In 30 Sampler 67.50 9-18-16
 (H) Final Hydrostatic 2081 Straddle - Ruined Shale Packer -

Initial Open 30 Shale Packer - Ruined Packer -
 Initial Shut-In 60 Extra Packer - Extra Copies -
 Final Flow 30 Extra Recorder - Sub Total 0
 Final Shut-In 60 Day Standby - Total 1285.00
 Accessibility 1285.00 MP/DST Disc't -
 Sub Total \$1217.50/-

Approved By Richard Bell Our Representative Mike Roberts

TriLOBite Testing Inc. shall not be liable for damaged of any kind of the property or personnel of the one for whom a test is made, or for any loss suffered or sustained, directly or indirectly, through the use of its equipment, or its statements or opinion concerning the results of any test, tools lost or damaged in the hole shall be paid for at cost by the party for whom the test is made.