



**TRILOBITE
TESTING, INC**

DRILL STEM TEST REPORT

Sandlin Oil Corporation
621 17th st.
STE 2055
Denver Co 80293-2001
ATTN: Herb Deines ,Kathie

27-12s-18w Ellis

Paul McRae #1

Job Ticket: 64092

DST#: 2

Test Start: 2017.02.14 @ 10:30:27

GENERAL INFORMATION:

Formation: **Arbuckle**

Deviated: No Whipstock: ft (KB)

Time Tool Opened: 11:42:22

Time Test Ended: 16:26:51

Test Type: Conventional Straddle (Reset)

Tester: Ray Schwager

Unit No: 77

Interval: 3656.00 ft (KB) To 3707.00 ft (KB) (TVD)

Total Depth: 3752.00 ft (KB) (TVD)

Hole Diameter: 7.85 inches Hole Condition: Fair

Reference Elevations: 2166.00 ft (KB)

2160.00 ft (CF)

KB to GR/CF: 6.00 ft

Serial #: 8360 Inside

Press@RunDepth: 46.04 psig @ 3665.00 ft (KB)

Start Date: 2017.02.14

End Date: 2017.02.14

Start Time: 10:30:27

End Time: 16:26:51

Capacity: 8000.00 psig

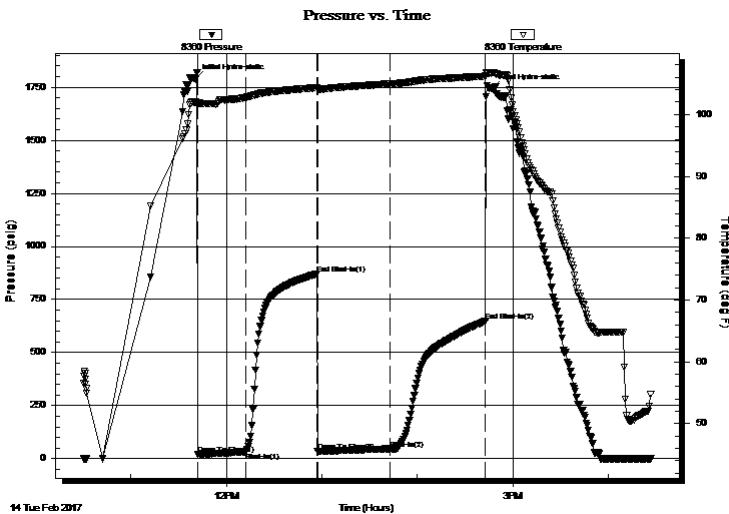
Last Calib.: 2017.02.14

Time On Btm: 2017.02.14 @ 11:40:37

Time Off Btm: 2017.02.14 @ 14:47:06

TEST COMMENT: 30-IFP-w k to a fr bl 1/2"to 5"bl
45-ISIP-no bl for approx 35 min then got surface bl
45-FFP-w k bl thru-out 1/2" to 2 1/4"bl
60-FSIP-no bl

PRESSURE SUMMARY



Time (Min.)	Pressure (psig)	Temp (deg F)	Annotation
0	1789.71	101.99	Initial Hydro-static
2	19.39	101.67	Open To Flow (1)
32	31.91	102.77	Shut-In(1)
77	871.62	104.33	End Shut-In(1)
77	34.57	104.00	Open To Flow (2)
123	46.04	104.96	Shut-In(2)
183	647.06	106.20	End Shut-In(2)
187	1741.63	106.77	Final Hydro-static

Recovery

Length (ft)	Description	Volume (bbl)
40.00	CO	0.56
40.00	HOCM 25% O75%M	0.56

* Recovery from multiple tests

Gas Rates

Choke (inches)	Pressure (psig)	Gas Rate (Mcf/d)



**TRILOBITE
TESTING, INC**

DRILL STEM TEST REPORT

Sandlin Oil Corporation

27-12s-18w Ellis

621 17th st.
STE 2055
Denver Co 80293-2001
ATTN: Herb Deines ,Kathie

Paul McRae #1

Job Ticket: 64092

DST#: 2

Test Start: 2017.02.14 @ 10:30:27

GENERAL INFORMATION:

Formation: **Arbuckle**

Deviated: No Whipstock: ft (KB)

Time Tool Opened: 11:42:22

Time Test Ended: 16:26:51

Test Type: Conventional Straddle (Reset)

Tester: Ray Schwager

Unit No: 77

Interval: 3656.00 ft (KB) To 3707.00 ft (KB) (TVD)

Reference Elevations: 2166.00 ft (KB)

Total Depth: 3752.00 ft (KB) (TVD)

2160.00 ft (CF)

Hole Diameter: 7.85 inches Hole Condition: Fair

KB to GR/CF: 6.00 ft

Serial #: 6751 Outside

Press@RunDepth: psig @ 3665.00 ft (KB)

Capacity: 8000.00 psig

Start Date: 2017.02.14 End Date: 2017.02.14

Last Calib.: 2017.02.14

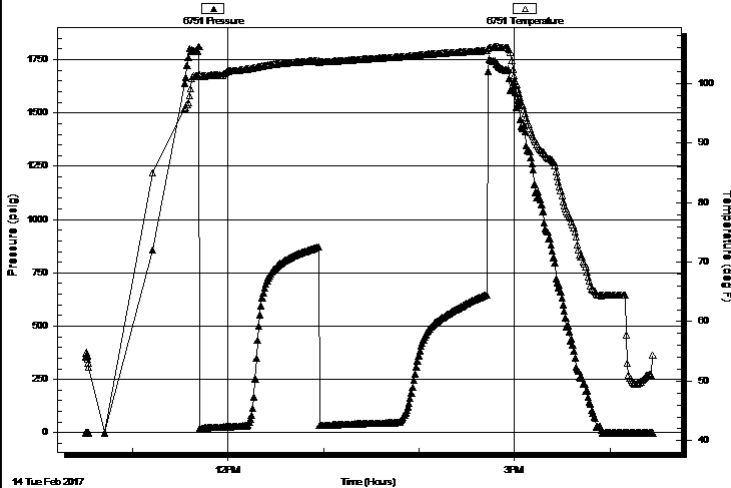
Start Time: 10:30:35 End Time: 16:26:44

Time On Btm:

Time Off Btm:

TEST COMMENT: 30-IFP-w k to a fr bl 1/2"to 5"bl
45-ISIP-no bl for approx 35 min then got surface bl
45-FFP-w k bl thru-out 1/2" to 2 1/4"bl
60-FSIP-no bl

Pressure vs. Time



PRESSURE SUMMARY

Time (Min.)	Pressure (psig)	Temp (deg F)	Annotation

Recovery

Length (ft)	Description	Volume (bbl)
40.00	CO	0.56
40.00	HOCM 25%O75%M	0.56

Gas Rates

	Choke (inches)	Pressure (psig)	Gas Rate (Mcf/d)

* Recovery from multiple tests



TRILOBITE TESTING, INC

DRILL STEM TEST REPORT

Sandlin Oil Corporation
 621 17th st.
 STE 2055
 Denver Co 80293-2001
 ATTN: Herb Deines ,Kathie

27-12s-18w Ellis

Paul McRae #1

Job Ticket: 64092

DST#: 2

Test Start: 2017.02.14 @ 10:30:27

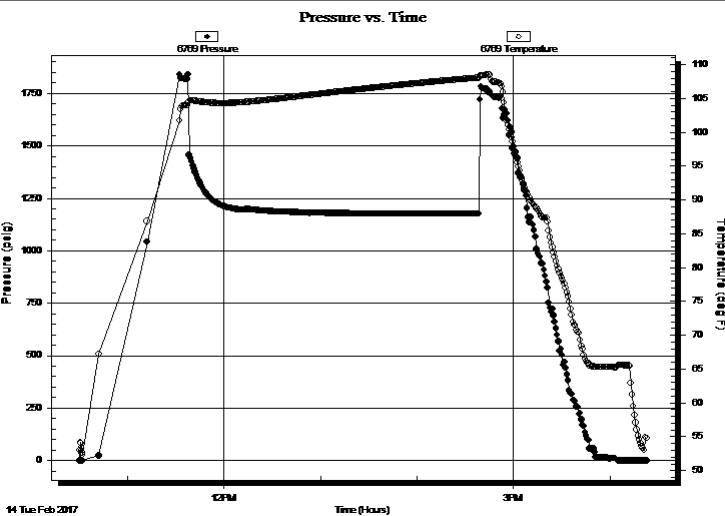
GENERAL INFORMATION:

Formation: **Arbuckle**
 Deviated: No Whipstock: ft (KB)
 Time Tool Opened: 11:42:22
 Time Test Ended: 16:26:51
 Interval: **3656.00 ft (KB) To 3707.00 ft (KB) (TVD)**
 Total Depth: 3752.00 ft (KB) (TVD)
 Hole Diameter: 7.85 inches Hole Condition: Fair
 Test Type: Conventional Straddle (Reset)
 Tester: Ray Schwager
 Unit No: 77
 Reference Elevations: 2166.00 ft (KB)
 2160.00 ft (CF)
 KB to GR/CF: 6.00 ft

Serial #: 6769 Below (Straddle)

Press@RunDepth: psig @ 3720.00 ft (KB) Capacity: 8000.00 psig
 Start Date: 2017.02.14 End Date: 2017.02.14 Last Calib.: 2017.02.14
 Start Time: 10:30:21 End Time: 16:23:00 Time On Btm:
 Time Off Btm:

TEST COMMENT: 30-IFP-w k to a fr bl 1/2"to 5"bl
 45-ISIP-no bl for approx 35 min then got surface bl
 45-FFP-w k bl thru-out 1/2" to 2 1/4"bl
 60-FSIP-no bl



PRESSURE SUMMARY

Time (Min.)	Pressure (psig)	Temp (deg F)	Annotation

Recovery

Length (ft)	Description	Volume (bbl)
40.00	CO	0.56
40.00	HOCM 25% O75%M	0.56

* Recovery from multiple tests

Gas Rates

Choke (inches)	Pressure (psig)	Gas Rate (Mcf/d)



**TRILOBITE
TESTING, INC**

DRILL STEM TEST REPORT

FLUID SUMMARY

Sandlin Oil Corporation

27-12s-18w Ellis

621 17th st.
STE 2055
Denver Co 80293-2001
ATTN: Herb Deines ,Kathie

Paul McRae #1

Job Ticket: 64092

DST#: 2

Test Start: 2017.02.14 @ 10:30:27

Mud and Cushion Information

Mud Type: Gel Chem
Mud Weight: 9.00 lb/gal
Viscosity: 58.00 sec/qt
Water Loss: 7.93 in³
Resistivity: ohm.m
Salinity: 4500.00 ppm
Filter Cake: 1.00 inches

Cushion Type:
Cushion Length: ft
Cushion Volume: bbl
Gas Cushion Type:
Gas Cushion Pressure: psig

Oil API: 23 deg API
Water Salinity: ppm

Recovery Information

Recovery Table

Length ft	Description	Volume bbl
40.00	CO	0.561
40.00	HOCM 25% O75%M	0.561

Total Length: 80.00 ft Total Volume: 1.122 bbl

Num Fluid Samples: 0

Num Gas Bombs: 0

Serial #:

Laboratory Name:

Laboratory Location:

Recovery Comments:

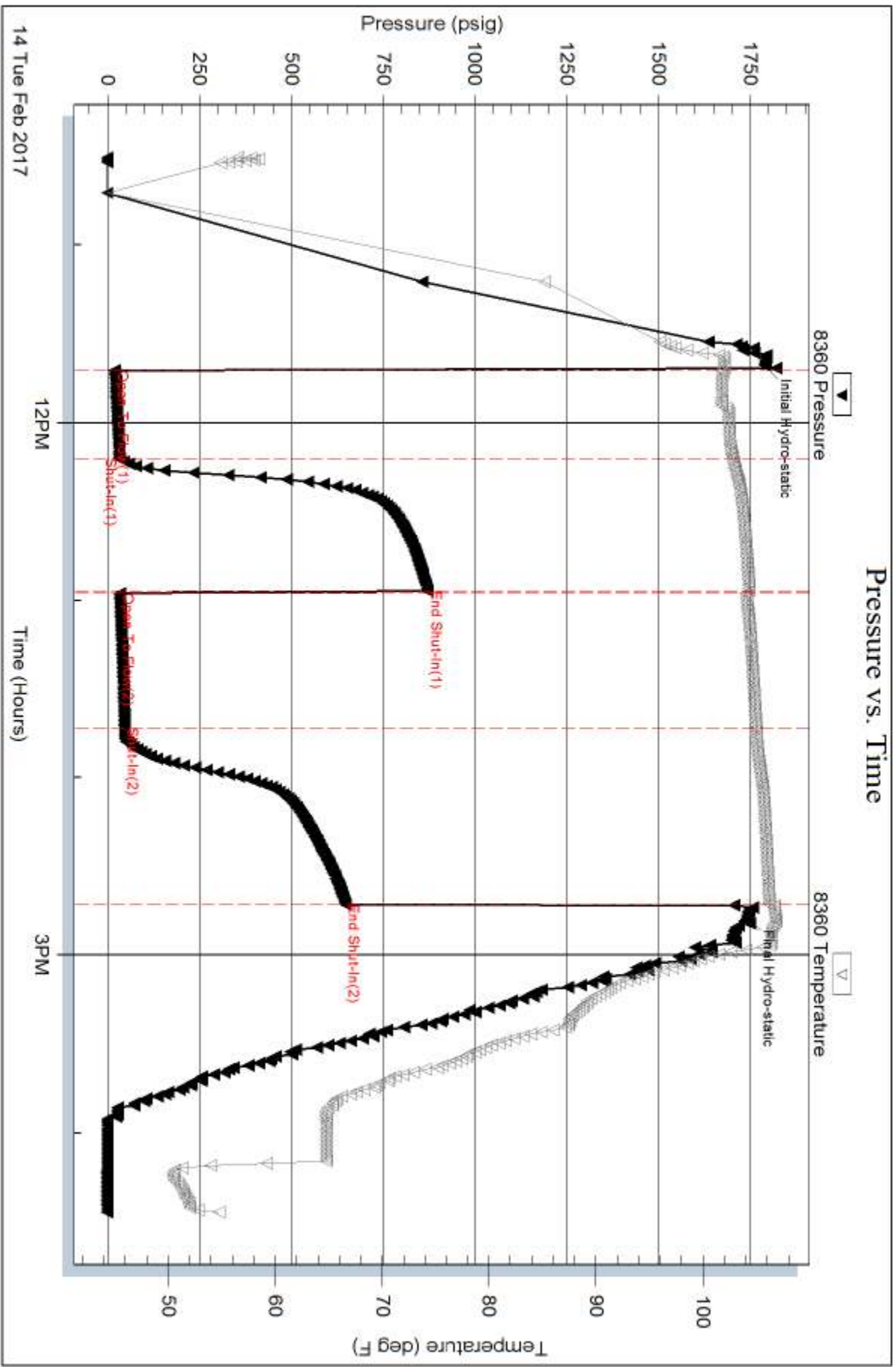
Serial #: 8360

Inside

Sandlin Oil Corporation

Paul McRae #1

DST Test Number: 2

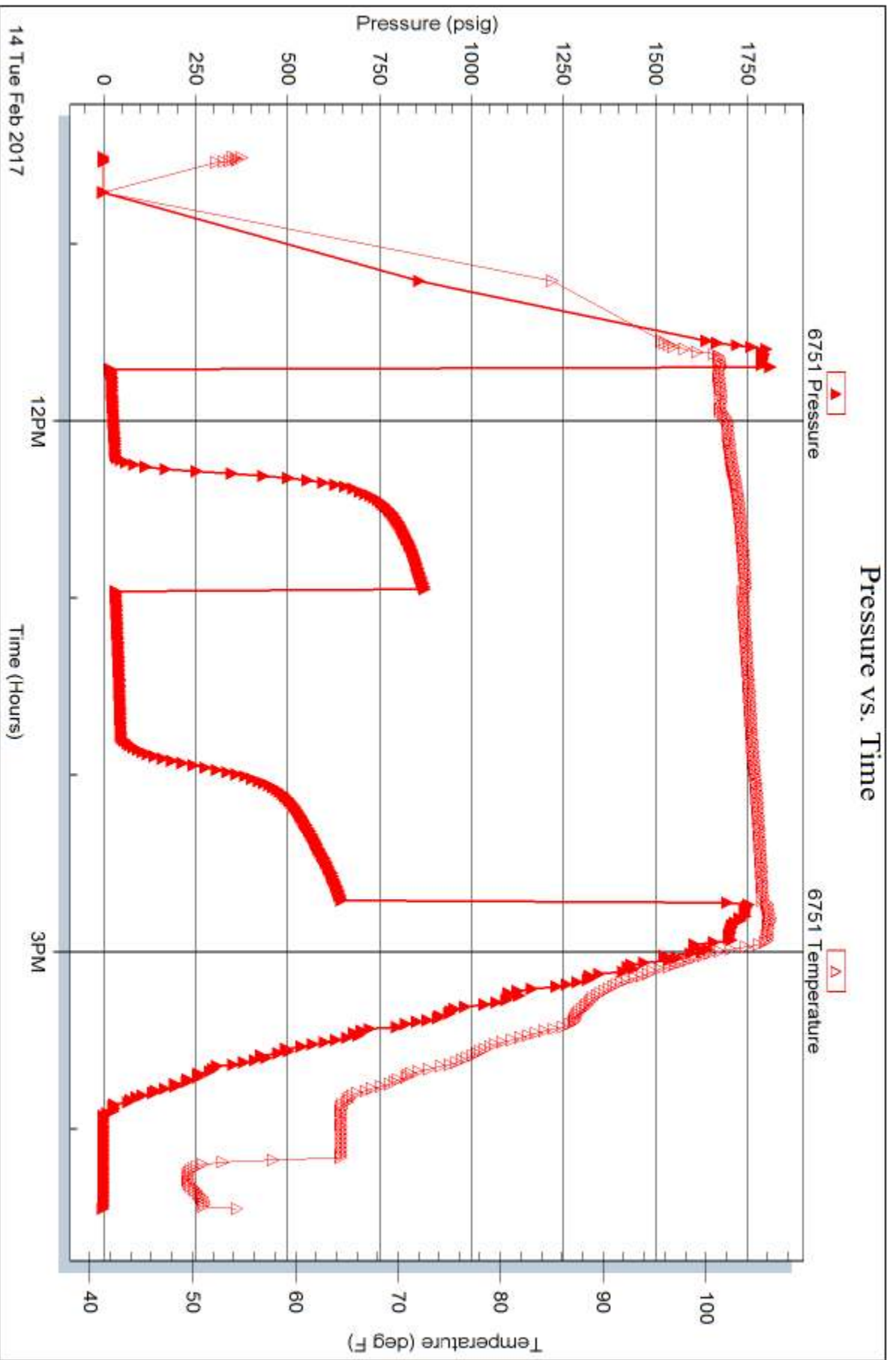


Serial #: 6751

Outside Sandlin Oil Corporation

Paul McRae #1

DST Test Number: 2

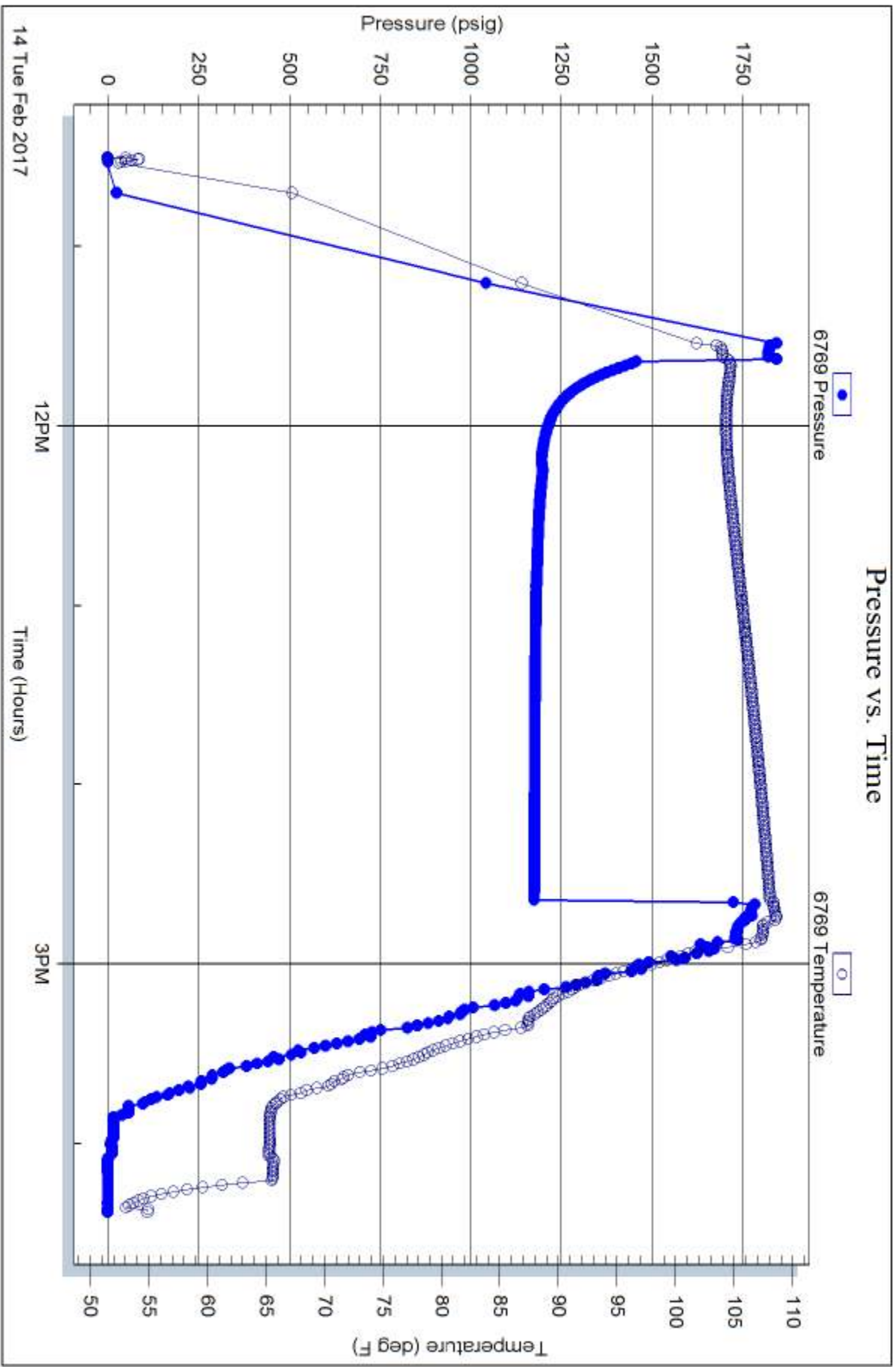


Serial #: 6769

Below (Stratfield) Oil Corporation

Paul McRae #1

DST Test Number: 2



Tribble Testing, Inc

Ref. No: 64092

Printed: 2017.02.14 @ 16:55:20