



**DIAMOND TESTING, LLC**  
P.O. Box 157  
**HOISINGTON, KANSAS 67544**  
(620) 653-7550 • (800) 542-7313  
COXLAND1-5DST1

Company Raydon Exploration, Inc. Lease & Well No. Cox Land No. 1-5  
Elevation 2944 KB Formation Marmaton Effective Pay      Ft. Ticket No. T577  
Date 12-1-16 Sec. 5 Twp. 28S Range 32W County Haskell State Kansas  
Test Approved By Edwin H. Grieves Diamond Representative Tim Venters

Formation Test No. 1 Interval Tested from 4,772 ft. to 4,785 ft. Total Depth 4,832 ft.  
Packer Depth 4,767 ft. Size 6 3/4 in. Packer Depth 4,785 ft. Size 6 3/4 in.  
Packer Depth 4,772 ft. Size 6 3/4 in. Packer Depth      ft. Size      in.  
Depth of Selective Zone Set 4,785 ft.

Top Recorder Depth (Inside) 4,753 ft. Recorder Number 5504 Cap. 5,000 psi.  
Bottom Recorder Depth (Outside) 4,782 ft. Recorder Number 13618 Cap. 5,025 psi.  
Below Straddle Recorder Depth 4,797 ft. Recorder Number 5514 Cap. 5,000 psi.

Drilling Contractor Quest Drilling Services, LLC - Rig 102 Drill Collar Length 364 ft I.D. 2 1/4 in.  
Mud Type Chemical Viscosity 53 Weight Pipe Length      ft I.D.      in.  
Weight 9.0 Water Loss 4.0 cc. Drill Pipe Length 4,375 ft I.D. 3 1/2 in.  
Chlorides 1,800 P.P.M. Test Tool Length 33 ft Tool Size 3 1/2-IF in.  
Jars: Make Sterling Serial Number 4 Anchor Length 13' perf. w/47' tail pipe Size 4 1/2-FH in.  
Did Well Flow? No Reversed Out No Surface Choke Size 1 in. Bottom Choke Size 5/8 in.  
Main Hole Size 7 7/8 in. Tool Joint Size 4 1/2-XH in.

Blow: 1st Open: Weak, surface blow increasing to 1 1/2 ins. No blow back during shut-in.

2nd Open: Very weak, surface blow increasing to 1/4 in. No blow back during shut-in.

Recovered 10 ft. of mud cut water w/trace oil = .049200 bbls. (Grind out: Trace-oil; 79%-water; 21%-mud)  
Recovered 90 ft. of slightly mud cut water w/trace oil = .442800 bbls. (Grind out: Trace-oil; 95%-water; 5%-mud)  
Recovered 100 ft. of TOTAL FLUID = .492000 bbls. Chlorides: 54,000 Ppm PH: 6.5 RW: .18 @ 65°  
Recovered      ft. of       
Recovered      ft. of       
Recovered      ft. of     

Remarks Tool Sample Grind Out: Trace-oil; 58%-water; 42%-mud  
Blow on the final flow period didn't start until 10-25 mins. into period.

Time Set Packer(s) 6:43 P.M. Time Started off Bottom 11:13 P.M. Maximum Temperature 121°  
Initial Hydrostatic Pressure.....(A) 2268 P.S.I.  
Initial Flow Period.....Minutes 30 (B) 12 P.S.I. to (C) 42 P.S.I.  
Initial Closed In Period.....Minutes 60 (D) 1260 P.S.I.  
Final Flow Period.....Minutes 60 (E) 47 P.S.I. to (F) 88 P.S.I.  
Final Closed In Period.....Minutes 120 (G) 1314 P.S.I.  
Final Hydrostatic Pressure.....(H) 2262 P.S.I.

# DIAMOND TESTING, LLC

TESTER : TIM VENTERS  
CELL # 620-388-6333

## General Information

Company Name	RAYDON EXPLORATION, INC.	Contact	MYRON HESTON	Job Number	T577
Well Name	COX LAND #1-5	Representative	TIM VENTERS		
Unique Well ID	DST #1, MARMATON, 4772-4785-4832	Well Operator	RAYDON EXPLORATION, INC.		
Surface Location	SEC 5-28S-32W, HASKELL CO. KS.	Report Date	2016/12/02		
Well License Number		Prepared By	TIM VENTERS		
Field	PRAIRIE DUNES				
Well Type	Vertical				

## Test Information

Test Type	STRADDLE
Formation	DST #1, MARMATON, 4772-4785-4832
Well Fluid Type	01 Oil
Test Purpose	Initial Test

Start Test Date	2016/12/01	Start Test Time	15:50:00
Final Test Date	2016/12/02	Final Test Time	02:01:00

Gauge Name 5504

## Test Results

RECOVERED: 10' MCW W/TR. O, TRACE OIL <1%, 79% WATER, 21% MUD  
 90' SMCW W/TR. O, TRACE OIL <1%, 95% WATER, 5% MUD  
 100' TOTAL FLUID

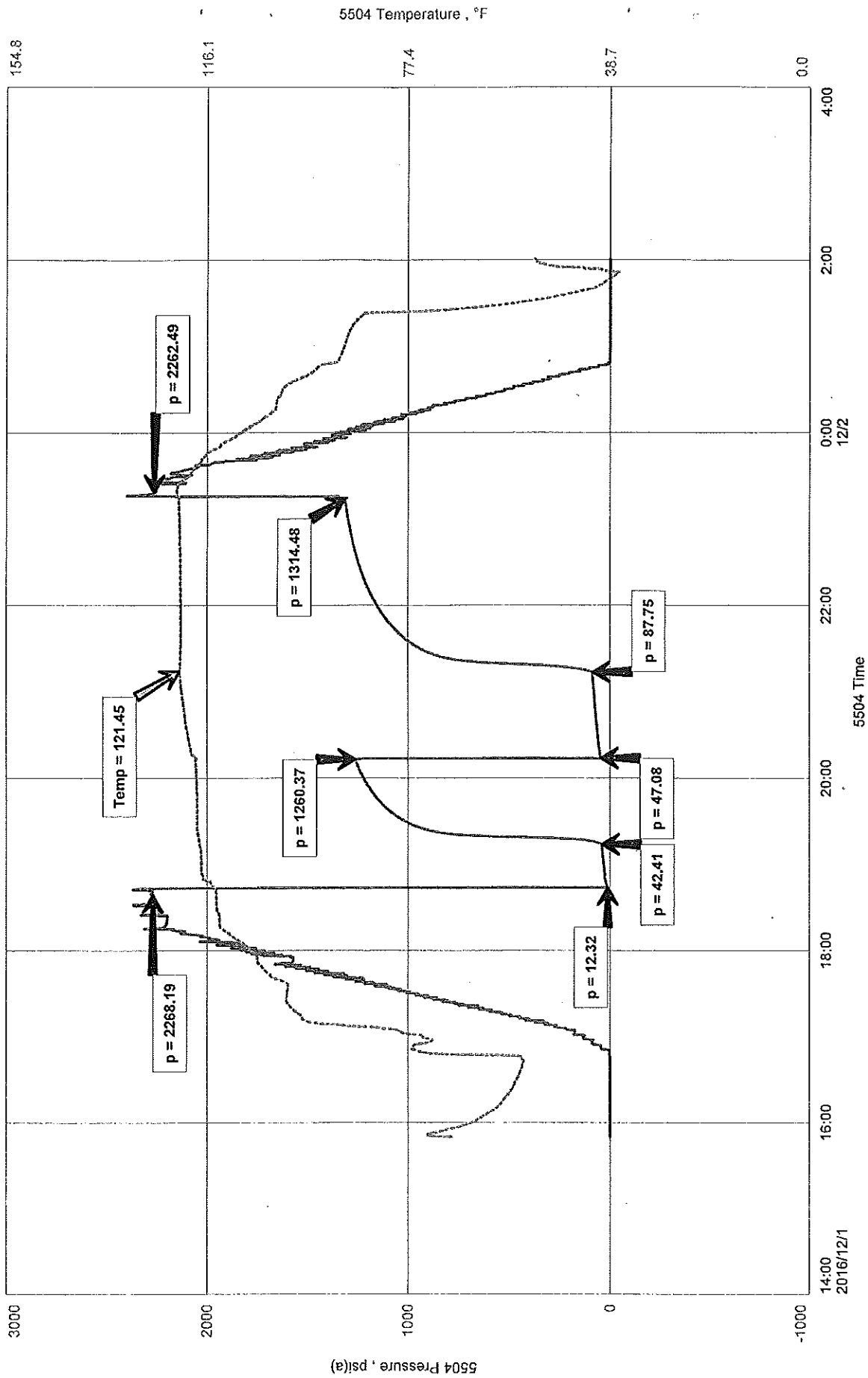
TOOL SAMPLE: TRACE OIL <1%, 58% WATER, 42% MUD

CHLORIDES: 54,000 ppm  
 PH: 6.5  
 RW: .18 @ 65 deg.

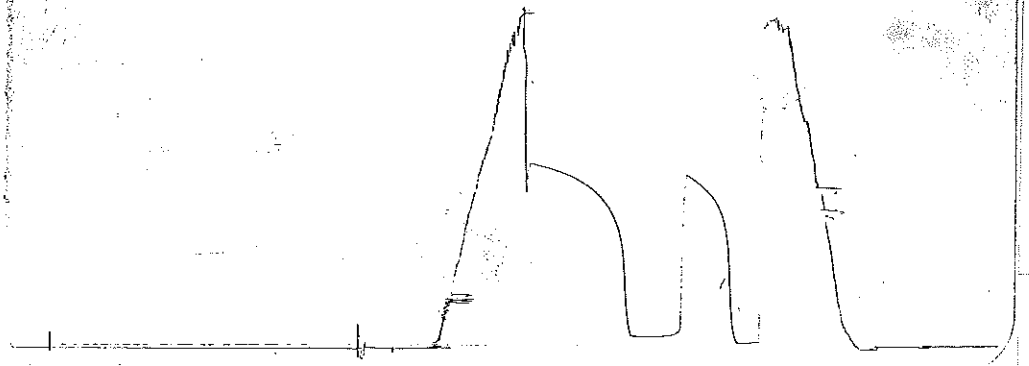
RAYDON EXPLORATION, INC.  
 DST #1, MARMATON, 4772-4785-4832  
 Start Test Date: 2016/12/01  
 Final Test Date: 2016/12/02

COX LAND #1-5  
 Formation: DST #1, MARMATON, 4772-4785-4832  
 Pool: WILDCAT  
 Job Number: T577

# COX LAND #1-5



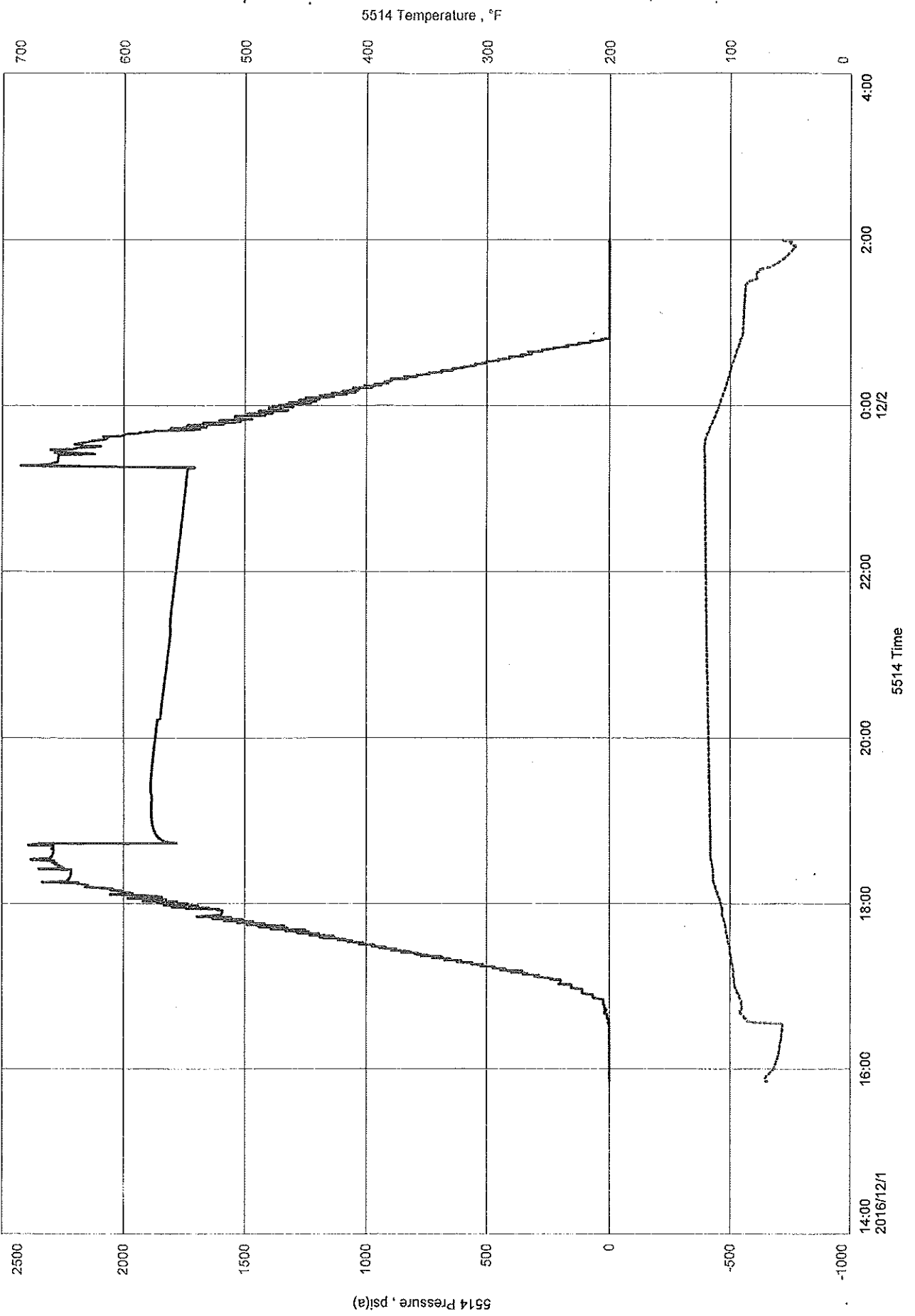
12-1-16  
Cox Land #15  
DET #1  
Middle Rec.



RAYDON EXPLORATION, INC.  
DST #1, MARMATON, 4772-4785-4832  
Start Test Date: 2016/12/01  
Final Test Date: 2016/12/02

COX LAND #1-5  
Formation: DST #1, MARMATON, 4772-4785-4832  
Pool: WILDCAT  
Job Number: T577

# COX LAND #1-5





**DIAMOND TESTING, LLC**  
P.O. Box 157  
**HOISINGTON, KANSAS 67544**  
(620) 653-7550 • (800) 542-7313  
COXLAND1-5DST2

Company Raydon Exploration, Inc. Lease & Well No. Cox Land No. 1-5  
Elevation 2944 KB Formation Morrow FM Effective Pay      Ft. Ticket No. T578  
Date 12-4-16 Sec. 5 Twp. 28S Range 32W County Haskell State Kansas  
Test Approved By Edwin H. Grieves Diamond Representative Tim Venters

Formation Test No. 2 Interval Tested from 5,147 ft. to 5,210 ft. Total Depth 5,210 ft.  
Packer Depth 5,142 ft. Size 6 3/4 in. Packer Depth      ft. Size      in.  
Packer Depth 5,147 ft. Size 6 3/4 in. Packer Depth      ft. Size      in.  
Depth of Selective Zone Set      ft.

Top Recorder Depth (Inside) 5,128 ft. Recorder Number 5504 Cap. 5,000 psi.  
Bottom Recorder Depth (Outside) 5,207 ft. Recorder Number 11029 Cap. 5,025 psi.  
Below Straddle Recorder Depth      ft. Recorder Number      Cap.      psi.

Drilling Contractor Quest Drilling Services, LLC - Rig 102 Drill Collar Length 364 ft I.D. 2 1/4 in.  
Mud Type Chemical Viscosity 58 Weight Pipe Length      ft I.D.      in.  
Weight 9.0 Water Loss 4.8 cc. Drill Pipe Length 4,750 ft I.D. 3 1/2 in.  
Chlorides 1,900 P.P.M. Test Tool Length 33 ft Tool Size 3 1/2-IF in.  
Jars: Make Sterling Serial Number 4 Anchor Length 31' perf. w/32' drill pipe Size 4 1/2-FH in.  
Did Well Flow? No Reversed Out No Surface Choke Size 1 in. Bottom Choke Size 5/8 in.  
Main Hole Size 7 7/8 in. Tool Joint Size 4 1/2-XH in.

Blow: 1st Open: Weak, surface blow increasing to 1/4 in. No blow back during shut-in.  
2nd Open: No blow throughout. No blow back during shut-in.

Recovered 10 ft. of drilling mud = .049200 bbls.  
Recovered      ft. of       
Recovered      ft. of       
Recovered      ft. of       
Recovered      ft. of       
Recovered      ft. of     

Remarks Tool Sample Grind Out: 100%-drilling mud

Time Set Packer(s) 1:21 A.M. Time Started off Bottom 5:21 A.M. Maximum Temperature 124°  
Initial Hydrostatic Pressure.....(A) 2420 P.S.I.  
Initial Flow Period.....Minutes 30 (B) 101 P.S.I. to (C) 171 P.S.I.  
Initial Closed In Period.....Minutes 60 (D) 1063 P.S.I.  
Final Flow Period.....Minutes 30 (E) 43 P.S.I. to (F) 64 P.S.I.  
Final Closed In Period.....Minutes 120 (G) 926 P.S.I.  
Final Hydrostatic Pressure.....(H) 2399 P.S.I.

# DIAMOND TESTING, LLC

TESTER : TIM VENTERS  
CELL # 620-388-6333

## General Information

Company Name	RAYDON EXPLORATION, INC.	Job Number	T578
Contact	MYRON HESTON	Representative	TIM VENTERS
Well Name	COX LAND #1-5	Well Operator	RAYDON EXPLORATION, INC.
Unique Well ID	DST #2, MORROW FM, 5147-5210	Report Date	2016/12/04
Surface Location	SEC 5-28S-32W, HASKELL CO. KS.	Prepared By	TIM VENTERS
Well License Number			
Field	PRAIRIE DUNES		
Well Type	Vertical		

## Test Information

Test Type	CONVENTIONAL
Formation	DST #2, MORROW FM, 5147-5210
Well Fluid Type	01 Oil
Test Purpose	Initial Test

Start Test Date	2016/12/03	Start Test Time	21:55:00
Final Test Date	2016/12/04	Final Test Time	10:30:00

Gauge Name	5504
------------	------

## Test Results

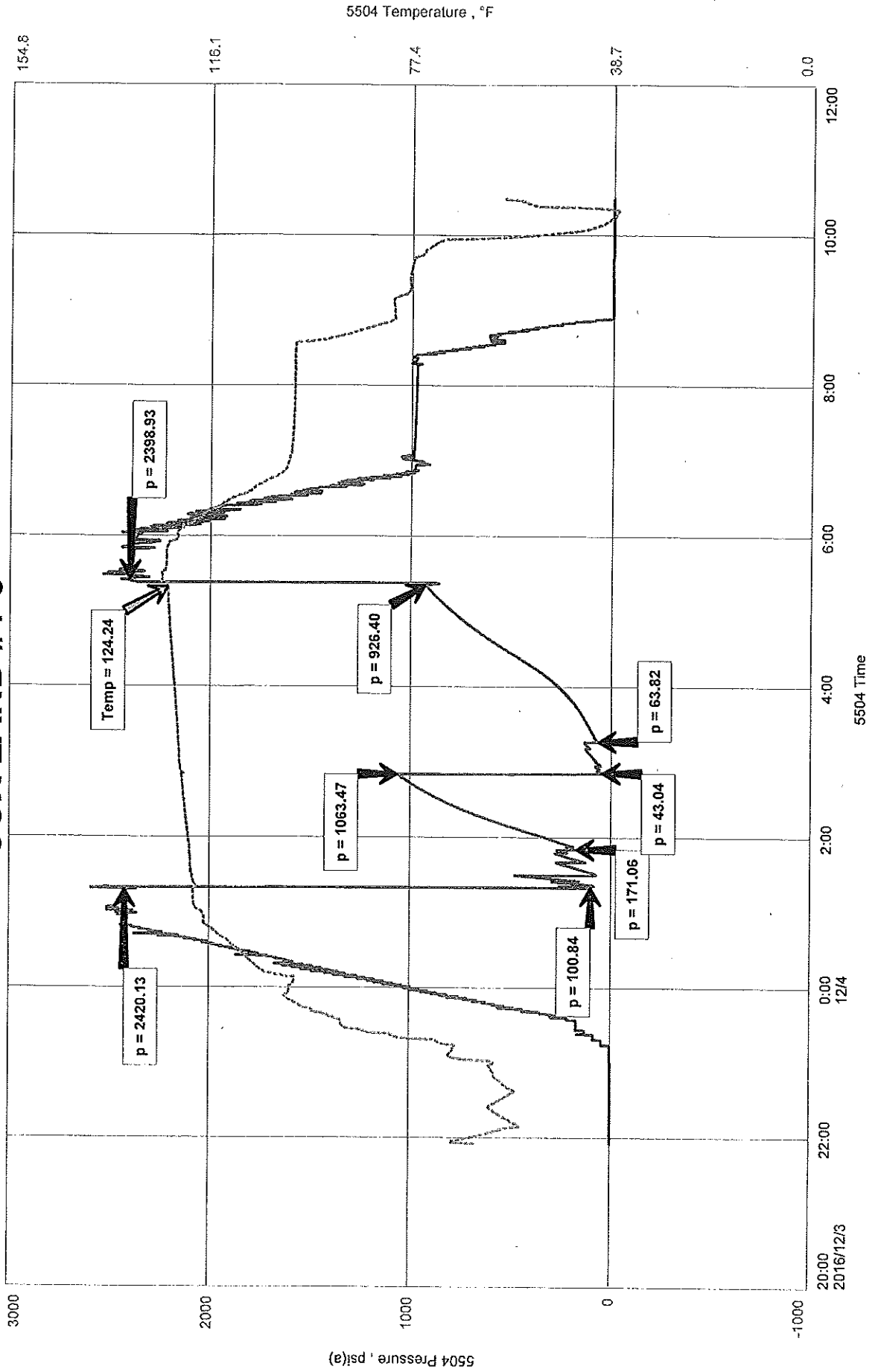
RECOVERED: 10' DRILLING MUD

TOOL SAMPLE: 100% DRILLING MUD

RAYDON EXPLORATION, INC.  
DST #2, MORROW FM, 5147-5210  
Start Test Date: 2016/12/03  
Final Test Date: 2016/12/04

COX LAND #1-5  
Formation: DST #2, MORROW FM, 5147-5210  
Pool: WILDCAT  
Job Number: T578

# COX LAND #1-5







**DIAMOND TESTING, LLC**  
P.O. Box 157  
**HOISINGTON, KANSAS 67544**  
(620) 653-7550 • (800) 542-7313  
COXLAND1-5DST3

Company Raydon Exploration, Inc. Lease & Well No. Cox Land No. 1-5  
Elevation 2944 KB Formation Morrow Quartz Sandstone Effective Pay      Ft. Ticket No. T579  
Date 12-5-16 Sec. 5 Twp. 28S Range 32W County Haskell State Kansas  
Test Approved By Edwin H. Grieves Diamond Representative Tim Venters

Formation Test No. 3 Interval Tested from 5,194 ft. to 5,240 ft. Total Depth 5,240 ft.  
Packer Depth 5,189 ft. Size 6 3/4 in. Packer Depth      ft. Size      in.  
Packer Depth 5,194 ft. Size 6 3/4 in. Packer Depth      ft. Size      in.  
Depth of Selective Zone Set      ft.

Top Recorder Depth (Inside) 5,175 ft. Recorder Number 5504 Cap. 5,000 psi.  
Bottom Recorder Depth (Outside) 5,237 ft. Recorder Number 11029 Cap. 5,025 psi.  
Below Straddle Recorder Depth      ft. Recorder Number      Cap.      psi.

Drilling Contractor Quest Drilling Services, LLC - Rig 102 Drill Collar Length 364 ft I.D. 2 1/4 in.  
Mud Type Chemical Viscosity 84 Weight Pipe Length      ft I.D.      in.  
Weight 8.9 Water Loss 5.6 cc. Drill Pipe Length 4,797 ft I.D. 3 1/2 in.  
Chlorides 2,500 P.P.M. Test Tool Length 33 ft Tool Size 3 1/2-IF in.  
Jars: Make Sterling Serial Number 4 Anchor Length 46 ft. Size 4 1/2-FH in.  
Did Well Flow? No Reversed Out No Surface Choke Size 1 in. Bottom Choke Size 5/8 in.  
Main Hole Size 7 7/8 in. Tool Joint Size 4 1/2-XH in.

Blow: 1st Open: PACKER FAILURE!

2nd Open: N/A

Recovered 370 ft. of drilling mud = 1.876260 bbls.  
Recovered      ft. of       
Recovered      ft. of       
Recovered      ft. of       
Recovered      ft. of       
Recovered      ft. of     

Remarks Tool Sample Grind Out: 100%-drilling mud

Time Set Packer(s)      Time Started off Bottom      Maximum Temperature       
Initial Hydrostatic Pressure.....(A)      P.S.I.  
Initial Flow Period.....Minutes 0 (B)      P.S.I. to (C)      P.S.I.  
Initial Closed In Period.....Minutes 0 (D)      P.S.I.  
Final Flow Period.....Minutes 0 (E)      P.S.I. to (F)      P.S.I.  
Final Closed In Period.....Minutes 0 (G)      P.S.I.  
Final Hydrostatic Pressure.....(H)      P.S.I.

# DIAMOND TESTING, LLC

TESTER : TIM VENTERS  
CELL # 620-388-6333

## General Information

Company Name	RAYDON EXPLORATION, INC.	Job Number	T578
Contact	MYRON HESTON	Representative	TIM VENTERS
Well Name	COX LAND #1-5	Well Operator	RAYDON EXPLORATION, INC.
Unique Well ID	DST #3, MORROW QTZ SD ST, 5194-5240	Report Date	2016/12/05
Surface Location	SEC 5-28S-32W, HASKELL CO. KS.	Prepared By	TIM VENTERS
Well License Number			
Field	PRAIRIE DUNES		
Well Type	Vertical		

## Test Information

Test Type	CONVENTIONAL
Formation	DST #3, MORROW QTZ SD ST, 5194-5240
Well Fluid Type	01 Oil
Test Purpose	Initial Test

Start Test Date	2016/12/04	Start Test Time	23:12:00
Final Test Date	2016/12/05	Final Test Time	05:47:00

Gauge Name	5504
------------	------

## Test Results

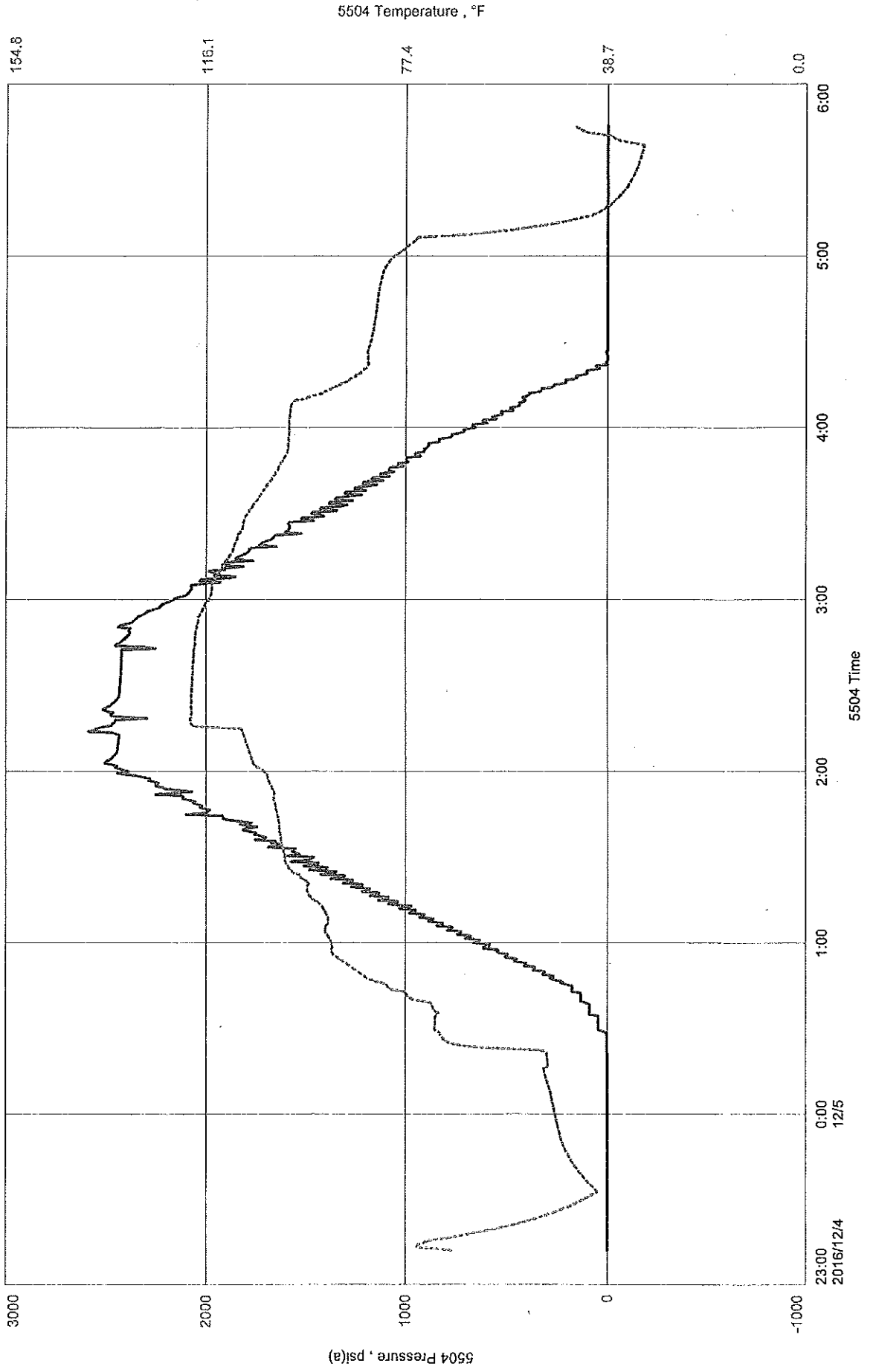
RECOVERED: 370' DRILLING MUD

TOOL SAMPLE: 100% DRILLING MUD

RAYDON EXPLORATION, INC.  
DST #3, MORROW QTZ SD ST, 5194-5240  
Start Test Date: 2016/12/04  
Final Test Date: 2016/12/05

COX LAND #1-5  
Formation: DST #3, MORROW QTZ SD ST, 5194-5240  
Pool: WILDCAT  
Job Number: T578

# COX LAND #1-5





**DIAMOND TESTING, LLC**  
P.O. Box 157  
**HOISINGTON, KANSAS 67544**  
(620) 653-7550 • (800) 542-7313  
COXLAND1-5DST4

Company Raydon Exploration, Inc. Lease & Well No. Cox Land No. 1-5  
Elevation 2944 KB Formation Morrow Quartz Sandstone Effective Pay      Ft. Ticket No. T580  
Date 12-5-16 Sec. 5 Twp. 28S Range 32W County Haskell State Kansas  
Test Approved By Edwin H. Grieves Diamond Representative Tim Venters

Formation Test No. 4 Interval Tested from 5,228 ft. to 5,240 ft. Total Depth 5,240 ft.  
Packer Depth 5,223 ft. Size 6 3/4 in. Packer Depth      ft. Size      in.  
Packer Depth 5,228 ft. Size 6 3/4 in. Packer Depth      ft. Size      in.  
Depth of Selective Zone Set      ft.

Top Recorder Depth (Inside) 5,209 ft. Recorder Number 5504 Cap. 5,000 psi.  
Bottom Recorder Depth (Outside) 5,237 ft. Recorder Number 11029 Cap. 5,025 psi.  
Below Straddle Recorder Depth      ft. Recorder Number      Cap.      psi.

Drilling Contractor Quest Drilling Services, LLC - Rig 102 Drill Collar Length 364 ft I.D. 2 1/4 in.  
Mud Type Chemical Viscosity 84 Weight Pipe Length      ft I.D.      in.  
Weight 8.9 Water Loss 5.6 cc. Drill Pipe Length 4,831 ft I.D. 3 1/2 in.  
Chlorides 2,500 P.P.M. Test Tool Length 33 ft Tool Size 3 1/2-IF in.  
Jars: Make Sterling Serial Number 4 Anchor Length 12 ft. Size 4 1/2-FH in.  
Did Well Flow? No Reversed Out No Surface Choke Size 1 in. Bottom Choke Size 5/8 in.  
Main Hole Size 7 7/8 in. Tool Joint Size 4 1/2-XH in.

Blow: 1st Open: Weak, surface blow throughout. No blow back during shut-in.  
2nd Open: No blow throughout. No blow back during shut-in.

Recovered 10 ft. of drilling mud = .049200 bbls.  
Recovered      ft. of       
Recovered      ft. of       
Recovered      ft. of       
Recovered      ft. of       
Recovered      ft. of     

Remarks Tool Sample Grind Out: 100%-drilling mud  
MISRUN! Shut-in tool malfunction.

Time Set Packer(s) 9:16 A.M. Time Started off Bottom 1:16 P.M. Maximum Temperature 127°  
Initial Hydrostatic Pressure.....(A) 2488 P.S.I.  
Initial Flow Period.....Minutes 30 (B) 17 P.S.I. to (C) 49 P.S.I.  
Initial Closed In Period.....Minutes 60 (D) 15 P.S.I.  
Final Flow Period.....Minutes 30 (E) 14 P.S.I. to (F) 16 P.S.I.  
Final Closed In Period.....Minutes 120 (G) 18 P.S.I.  
Final Hydrostatic Pressure.....(H) 2485 P.S.I.

# DIAMOND TESTING, LLC

TESTER : TIM VENTERS  
CELL # 620-388-6333

## General Information

Company Name	RAYDON EXPLORATION, INC.	Contact	MYRON HESTON	Job Number	T580
Well Name	COX LAND #1-5	Representative	TIM VENTERS	Well Operator	RAYDON EXPLORATION, INC.
Unique Well ID	DST #4, MORROW QTZ SD ST, 5228-5240	Report Date	2016/12/05	Prepared By	TIM VENTERS
Surface Location	SEC 5-28S-32W, HASKELL CO. KS.	Field	PRAIRIE DUNES	Well Type	Vertical

## Test Information

Test Type	CONVENTIONAL
Formation	DST #4, MORROW QTZ SD ST, 5228-5240
Well Fluid Type	01 Oil
Test Purpose	Initial Test

Start Test Date	2016/12/05	Start Test Time	06:31:00
Final Test Date	2016/12/05	Final Test Time	15:54:00

Gauge Name	5504
------------	------

## Test Results

RECOVERED: 10' DRILLING MUD

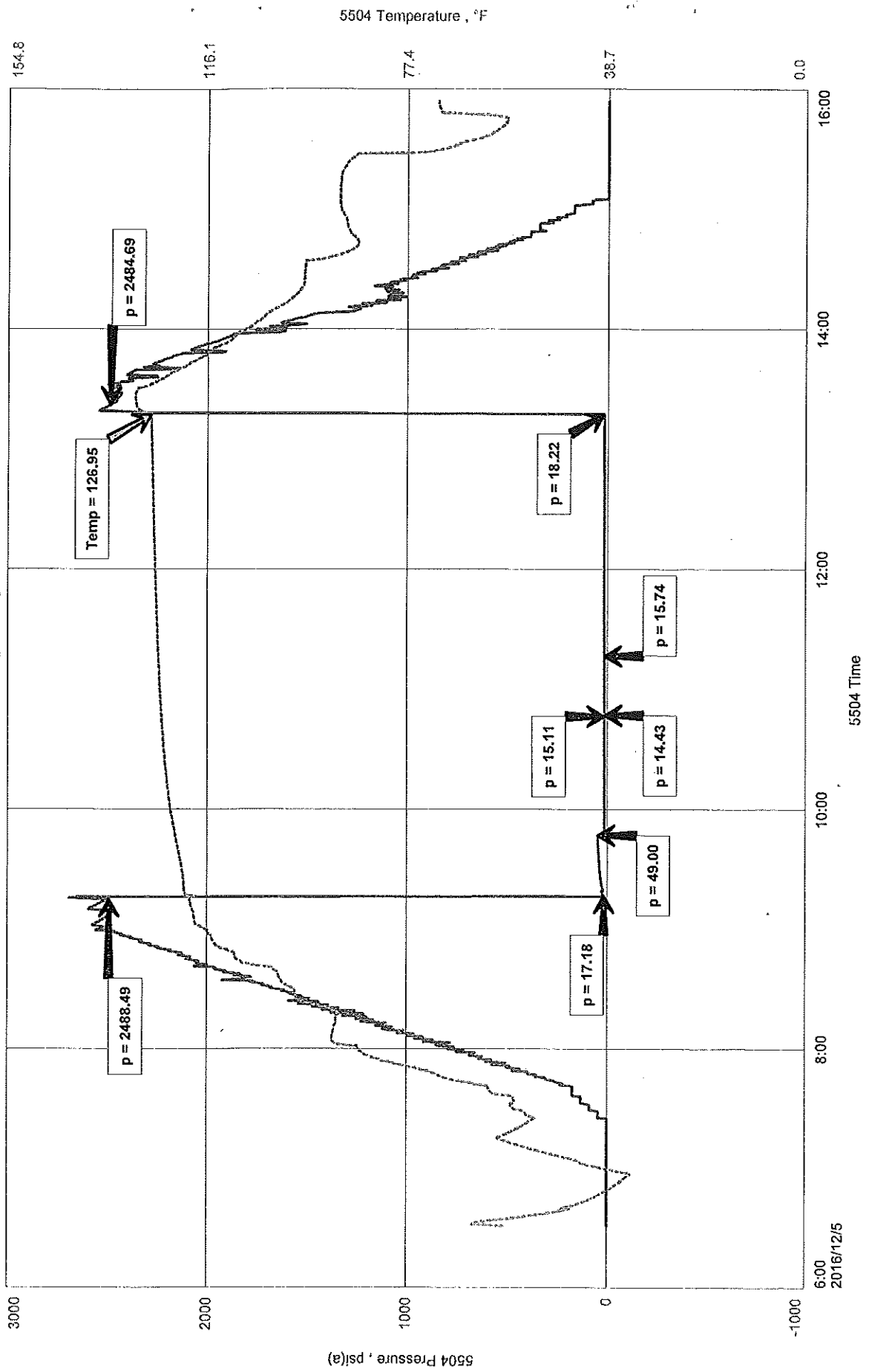
TOOL SAMPLE: 100% DRILLING MUD

MISRUN! SHUT-IN TOOL MALFUNCTION.

RAYDON EXPLORATION, INC.  
 DST #4, MORROW QTZ SD ST, 5228-5240  
 Start Test Date: 2016/12/05  
 Final Test Date: 2016/12/05

COX LAND #1-5  
 Formation: DST #4, MORROW QTZ SD ST, 5228-5240  
 Pool: WILDCAT  
 Job Number: T580

# COX LAND #1-5



5504 Pressure, psia

5504 Temperature, °F

6:00  
2016/12/5

8:00

10:00

12:00

14:00

16:00

5504 Time

3000

2000

1000

0

-1000

154.8

116.1

77.4

38.7

0.0



**DIAMOND TESTING, LLC**  
 P.O. Box 157  
**HOISINGTON, KANSAS 67544**  
 (620) 653-7550 • (800) 542-7313  
 COXLAND1-5DST5

Company Raydon Exploration, Inc. Lease & Well No. Cox Land No. 1-5  
 Elevation 2944 KB Formation St. Louis Effective Pay      Ft. Ticket No. T581  
 Date 12-7-16 Sec. 5 Twp. 28S Range 32W County Haskell State Kansas  
 Test Approved By Edwin H. Grieves Diamond Representative Tim Venters

Formation Test No. 5 Interval Tested from 5,425 ft. to 5,445 ft. Total Depth 5,445 ft.  
 Packer Depth 5,420 ft. Size 6 3/4 in. Packer Depth      ft. Size      in.  
 Packer Depth 5,425 ft. Size 6 3/4 in. Packer Depth      ft. Size      in.  
 Depth of Selective Zone Set      ft.

Top Recorder Depth (Inside) 5,406 ft. Recorder Number 5504 Cap. 5,000 psi.  
 Bottom Recorder Depth (Outside) 5,442 ft. Recorder Number 11029 Cap. 5,025 psi.  
 Below Straddle Recorder Depth      ft. Recorder Number      Cap.      psi.

Drilling Contractor Quest Drilling Services, LLC - Rig 102 Drill Collar Length 364 ft I.D. 2 1/4 in.  
 Mud Type Chemical Viscosity 80 Weight Pipe Length      ft I.D.      in.  
 Weight 8.8 Water Loss 4.9 cc. Drill Pipe Length 5,028 ft I.D. 3 1/2 in.  
 Chlorides 2,500 P.P.M. Test Tool Length 33 ft Tool Size 3 1/2-IF in.  
 Jars: Make Sterling Serial Number 4 Anchor Length 20 ft. Size 4 1/2-FH in.  
 Did Well Flow? No Reversed Out No Surface Choke Size 1 in. Bottom Choke Size 5/8 in.  
 Main Hole Size 7 7/8 in. Tool Joint Size 4 1/2-XH in.

Blow: 1st Open: Weak, surface blow increasing to 1 in. Weak, surface blow back during shut-in.  
2nd Open: Weak, surface blow throughout. Very weak, surface blow back during shut-in.

Recovered 120 ft. of slightly gas cut, muddy water w/trace oil = .590400 bbls. (Grind out: 1%-gas; Trace-oil; 65%-water; 34%-mud)  
 Recovered 185 ft. of slightly gas cut, mud cut water w/trace oil = .910200 bbls. (Grind out: 1%-gas; Trace-oil; 90%-water; 9%-mud)  
 Recovered 305 ft. of TOTAL FLUID = 1.500600 bbls. Chlorides: 40,000 Ppm PH: 6.0 RW: .23 @ 58°  
 Recovered      ft. of       
 Recovered      ft. of       
 Recovered      ft. of     

Remarks Tool Sample Grind Out: 2%-oil; 73%-water; 25%-mud  
MISRUN! Shut-in tool malfunction.

Time Set Packer(s) 8:00 A.M. Time Started off Bottom 12:30 P.M. Maximum Temperature 135°  
 Initial Hydrostatic Pressure.....(A) 2527 P.S.I.  
 Initial Flow Period.....Minutes 30 (B) 15 P.S.I. to (C) 34 P.S.I.  
 Initial Closed In Period.....Minutes 60 (D) 68 P.S.I.  
 Final Flow Period.....Minutes 60 (E) 68 P.S.I. to (F) 98 P.S.I.  
 Final Closed In Period.....Minutes 120 (G) 151 P.S.I.  
 Final Hydrostatic Pressure.....(H) 2518 P.S.I.

# DIAMOND TESTING, LLC

**TESTER : TIM VENTERS**  
**CELL # 620-388-6333**

## General Information

Company Name	RAYDON EXPLORATION, INC.	Job Number	T581
Contact	MYRON HESTON	Representative	TIM VENTERS
Well Name	COX LAND #1-5	Well Operator	RAYDON EXPLORATION, INC.
Unique Well ID	DST #5, ST. LOUIS, 5425-5445	Report Date	2016/12/07
Surface Location	SEC 5-28S-32W, HASKELL CO. KS.	Prepared By	TIM VENTERS
Well License Number			
Field	PRAIRIE DUNES		
Well Type	Vertical		

## Test Information

Test Type	CONVENTIONAL
Formation	DST #5, ST. LOUIS, 5425-5445
Well Fluid Type	01 Oil
Test Purpose	Initial Test

Start Test Date	2016/12/07	Start Test Time	04:36:00
Final Test Date	2016/12/07	Final Test Time	15:30:00

Gauge Name 5504

## Test Results

RECOVERED: 120' SGC,MW W/TR. OIL, 1% GAS, TRACE OIL <1%, 65% WATER, 34% MUD  
 185' SGC,MCW W/TR. O, 1% GAS, TRACE OIL <1%, 90% WATER, 9% MUD  
 305' TOTAL FLUID

TOOL SAMPLE: 2% OIL, 73% WATER, 25% MUD

MISRUN! SHUT-IN TOOL MALFUNCTION.

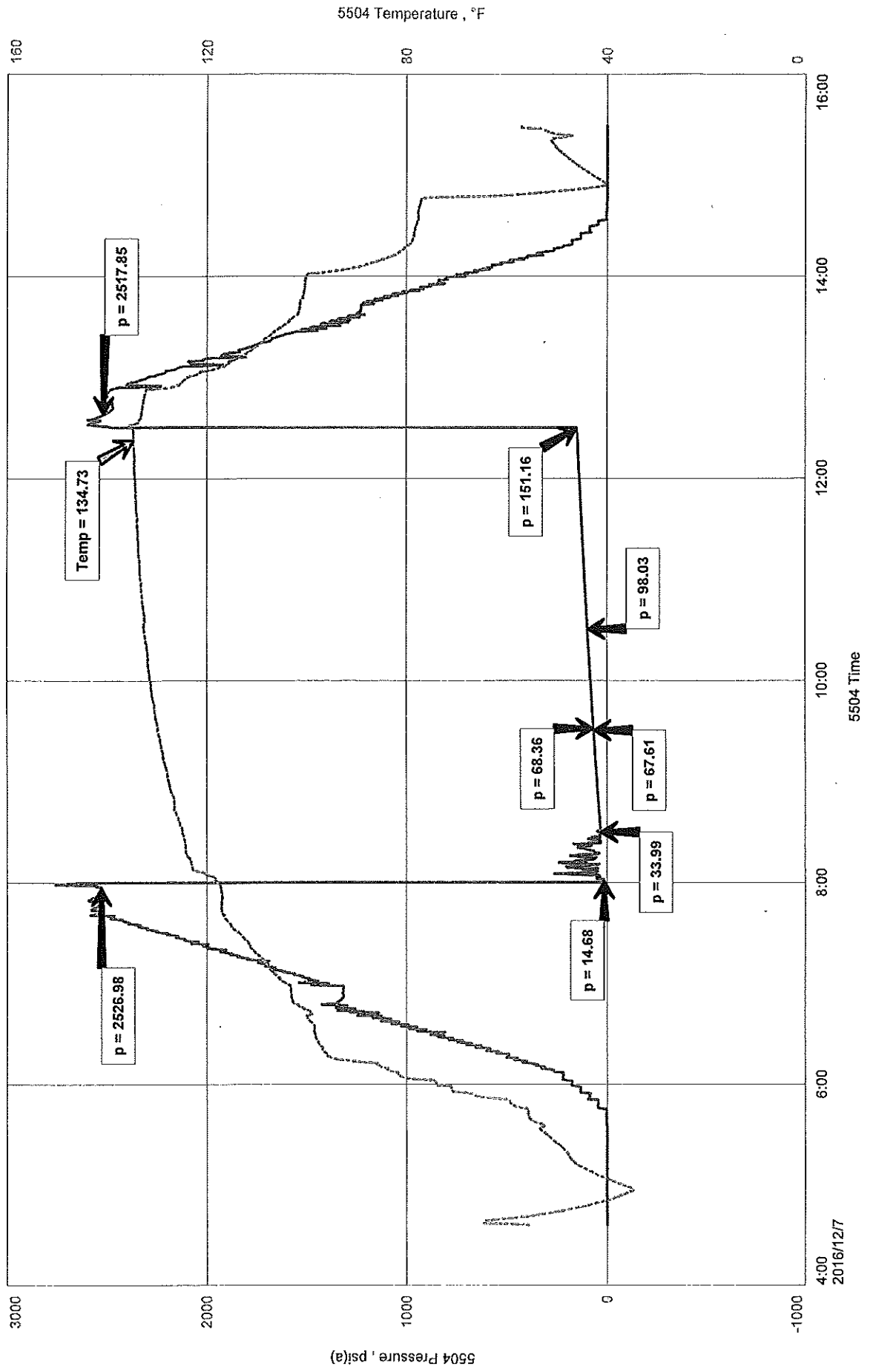
CHLORIDES: 40,000 ppm  
 PH: 6.0  
 RW: .23 @ 58 deg.



RAYDON EXPLORATION, INC.  
DST #5, ST. LOUIS, 5425-5445  
Start Test Date: 2016/12/07  
Final Test Date: 2016/12/07

COX LAND #1-5  
Formation: DST #5, ST. LOUIS, 5425-5445  
Pool: WILDCAT  
Job Number: T581

# COX LAND #1-5



5504 Pressure, psi(a)

5504 Temperature, °F

2016/12/7

5504 Time