



## DRILL STEM TEST REPORT

Prepared For: **Cobalt Energy LLC**

PO Box 8037  
Wichita KS 67208

ATTN: Nicholas Hess/Corey

**S32-7s-16w Rooks,KS**

**Taylor Trust 'A' #1-32**

Start Date: 2017.02.04 @ 19:09:00

End Date: 2017.02.05 @ 00:58:00

Job Ticket #: 64673                      DST #: 1

Trilobite Testing, Inc  
PO Box 362 Hays, KS 67601  
ph: 785-625-4778 fax: 785-625-5620

Printed: 2017.02.07 @ 09:01:32



**TRILOBITE  
TESTING, INC**

# DRILL STEM TEST REPORT

Cobalt Energy LLC

**Taylor Trust 'A' #1-32**

PO Box 8037  
Wichita KS 67208

**S32-7s-16w Rooks,KS**

ATTN: Nicholas Hess/Corey

Job Ticket: 64673

**DST#: 1**

Test Start: 2017.02.04 @ 19:09:00

## GENERAL INFORMATION:

Formation: **Lower Topeka**

Deviated: No Whipstock: ft (KB)

Time Tool Opened: 21:02:15

Time Test Ended: 00:58:00

Test Type: Conventional Bottom Hole (Initial)

Tester: Spencer J. Staab

Unit No: 84

**Interval: 2850.00 ft (KB) To 2919.00 ft (KB) (TVD)**

Reference Elevations: 1762.00 ft (KB)

Total Depth: 2919.00 ft (KB) (TVD)

1757.00 ft (CF)

Hole Diameter: 7.88 inches Hole Condition: Fair

KB to GR/CF: 5.00 ft

**Serial #: 8934**

**Inside**

Press@RunDepth: 19.14 psig @ 2852.00 ft (KB)

Capacity: 8000.00 psig

Start Date: 2017.02.04 End Date: 2017.02.05

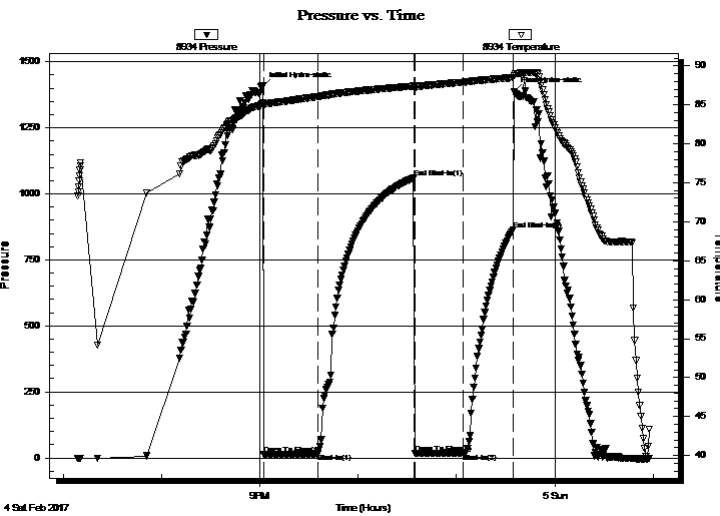
Last Calib.: 2017.02.05

Start Time: 19:09:05 End Time: 00:57:59

Time On Btm: 2017.02.04 @ 21:02:00

Time Off Btm: 2017.02.04 @ 23:35:15

**TEST COMMENT:** 30-IF-Very Weak Blow ; Built from a surface blow to 1"  
60-ISI-No Blow Back  
30-FF-No Blow  
30-FSI-No Blow Back



## PRESSURE SUMMARY

Time (Min.)	Pressure (psig)	Temp (deg F)	Annotation
0	1406.58	85.29	Initial Hydro-static
1	14.04	84.76	Open To Flow (1)
34	15.65	86.04	Shut-In(1)
92	1060.72	87.40	End Shut-In(1)
93	18.04	87.01	Open To Flow (2)
123	19.14	87.89	Shut-In(2)
153	864.37	88.48	End Shut-In(2)
154	1385.51	88.71	Final Hydro-static

## Recovery

Length (ft)	Description	Volume (bbl)
20.00	Oil Speckled Mud	0.10

## Gas Rates

	Choke (inches)	Pressure (psig)	Gas Rate (Mcf/d)



**TRIOLOBITE  
TESTING, INC**

## DRILL STEM TEST REPORT

Cobalt Energy LLC

**Taylor Trust 'A' #1-32**

PO Box 8037  
Wichita KS 67208

**S32-7s-16w Rooks,KS**

Job Ticket: 64673

**DST#: 1**

ATTN: Nicholas Hess/Corey

Test Start: 2017.02.04 @ 19:09:00

### GENERAL INFORMATION:

Formation: **Lower Topeka**

Deviated: No Whipstock: ft (KB)

Time Tool Opened: 21:02:15

Time Test Ended: 00:58:00

Test Type: Conventional Bottom Hole (Initial)

Tester: Spencer J. Staab

Unit No: 84

Interval: **2850.00 ft (KB) To 2919.00 ft (KB) (TVD)**

Total Depth: 2919.00 ft (KB) (TVD)

Hole Diameter: 7.88 inches Hole Condition: Fair

Reference Elevations: 1762.00 ft (KB)

1757.00 ft (CF)

KB to GR/CF: 5.00 ft

**Serial #: 9120**

**Inside**

Press@RunDepth: psig @ 2852.00 ft (KB)

Start Date: 2017.02.04

Start Time: 19:09:15

End Date: 2017.02.05

End Time: 00:58:00

Capacity: 8000.00 psig

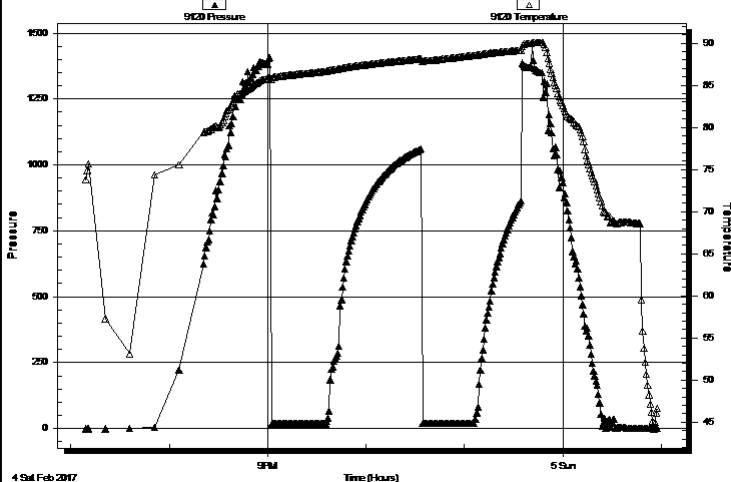
Last Calib.: 2017.02.05

Time On Btm:

Time Off Btm:

**TEST COMMENT:** 30-IF-Very Weak Blow ; Built from a surface blow to 1"  
60-ISI-No Blow Back  
30-FF-No Blow  
30-FSI-No Blow Back

Pressure vs. Time



PRESSURE SUMMARY

Time (Min.)	Pressure (psig)	Temp (deg F)	Annotation

Recovery

Gas Rates

Length (ft)	Description	Volume (bbl)
20.00	Oil Speckled Mud	0.10

	Choke (inches)	Pressure (psig)	Gas Rate (Mcf/d)



**TRILOBITE  
TESTING, INC**

# DRILL STEM TEST REPORT

**TOOL DIAGRAM**

Cobalt Energy LLC

**Taylor Trust 'A' #1-32**

PO Box 8037  
Wichita KS 67208

**S32-7s-16w Rooks,KS**

Job Ticket: 64673

**DST#: 1**

ATTN: Nicholas Hess/Corey

Test Start: 2017.02.04 @ 19:09:00

## Tool Information

Drill Pipe:	Length: 2691.00 ft	Diameter: 3.80 inches	Volume: 37.75 bbl	Tool Weight: 2200.00 lb
Heavy Wt. Pipe:	Length: ft	Diameter: inches	Volume: - bbl	Weight set on Packer: 25000.00 lb
Drill Collar:	Length: 151.00 ft	Diameter: 2.25 inches	Volume: 0.74 bbl	Weight to Pull Loose: 49000.00 lb
			<u>Total Volume: - bbl</u>	Tool Chased ft
Drill Pipe Above KB:	15.00 ft			String Weight: Initial 46000.00 lb
Depth to Top Packer:	2850.00 ft			Final 46000.00 lb
Depth to Bottom Packer:	ft			
Interval between Packers:	69.00 ft			
Tool Length:	92.00 ft			
Number of Packers:	1	Diameter: 6.75 inches		

Tool Comments:

## Tool Description

Tool Description	Length (ft)	Serial No.	Position	Depth (ft)	Accum. Lengths
Change Over Sub	1.00			2828.00	
Shut In Tool	5.00			2833.00	
Hydraulic tool	5.00			2838.00	
Safety Joint	3.00			2841.00	
Packer	5.00			2846.00	23.00 Bottom Of Top Packer
Packer	4.00			2850.00	
Stubb	1.00			2851.00	
Change Over Sub	1.00			2852.00	
Recorder	0.00	9120	Inside	2852.00	
Recorder	0.00	8934	Inside	2852.00	
Drill Pipe	62.00			2914.00	
Change Over Sub	1.00			2915.00	
Bullnose	4.00			2919.00	69.00 Bottom Packers & Anchor

**Total Tool Length: 92.00**



**TRILOBITE  
TESTING, INC**

# DRILL STEM TEST REPORT

**FLUID SUMMARY**

Cobalt Energy LLC

**Taylor Trust 'A' #1-32**

PO Box 8037  
Wichita KS 67208

**S32-7s-16w Rooks,KS**

Job Ticket: 64673

**DST#: 1**

ATTN: Nicholas Hess/Corey

Test Start: 2017.02.04 @ 19:09:00

## Mud and Cushion Information

Mud Type: Gel Chem

Cushion Type:

Oil API:

deg API

Mud Weight: 9.00 lb/gal

Cushion Length: ft

Water Salinity: ppm

Viscosity: 49.00 sec/qt

Cushion Volume: bbl

Water Loss: 7.19 in<sup>3</sup>

Gas Cushion Type:

Resistivity: ohm.m

Gas Cushion Pressure: psig

Salinity: 3000.00 ppm

Filter Cake: inches

## Recovery Information

Recovery Table

Length ft	Description	Volume bbl
20.00	Oil Speckled Mud	0.098

Total Length: 20.00 ft      Total Volume: 0.098 bbl

Num Fluid Samples: 0

Num Gas Bombs: 0

Serial #:

Laboratory Name:

Laboratory Location:

Recovery Comments:

Serial #: 8934

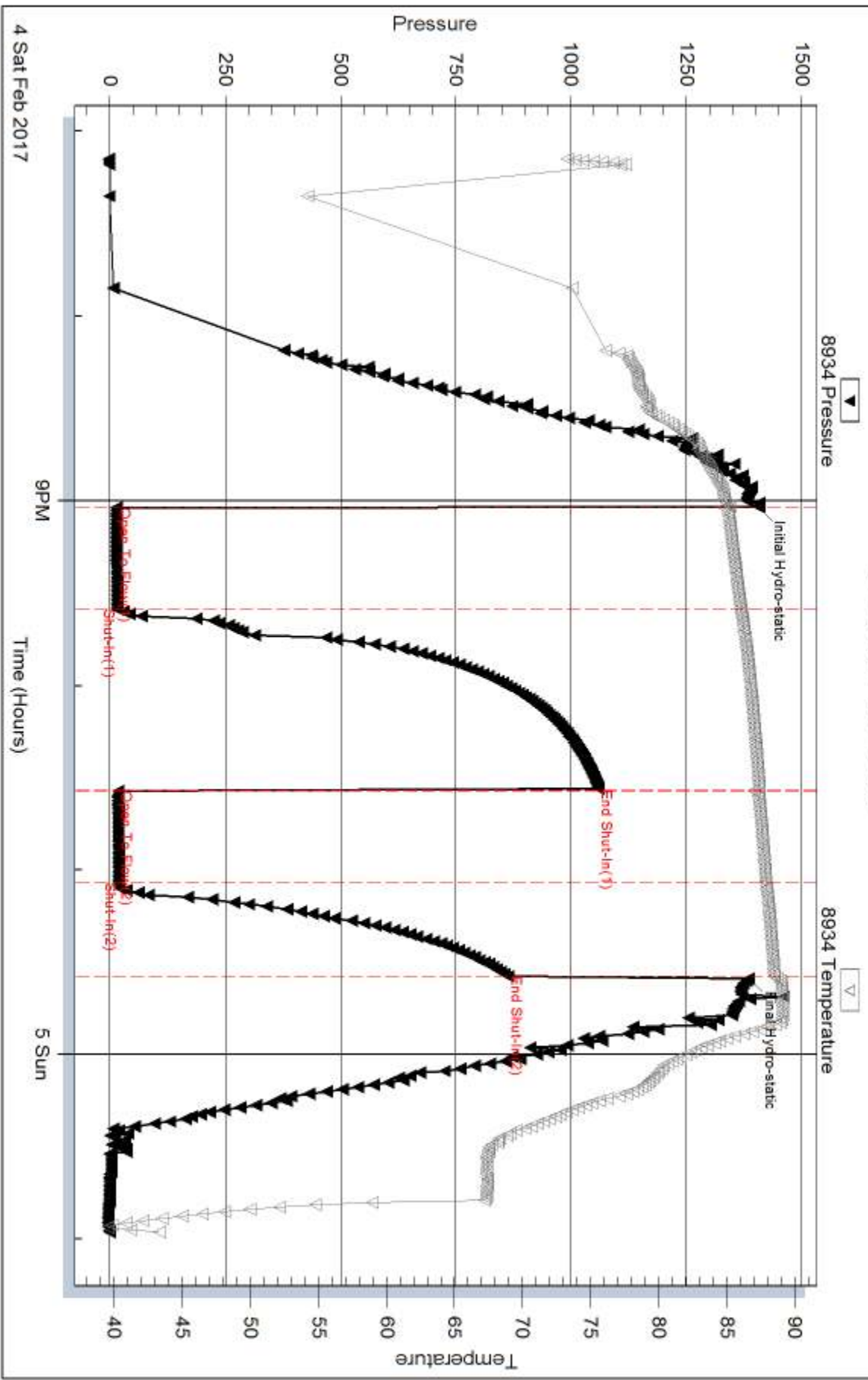
Inside

Cobalt Energy LLC

S32-7s-16w Rooks, KS

DST Test Number: 1

### Pressure vs. Time



Trilobite Testing, Inc

Ref. No: 64673

Printed: 2017.02.07 @ 09:01:33

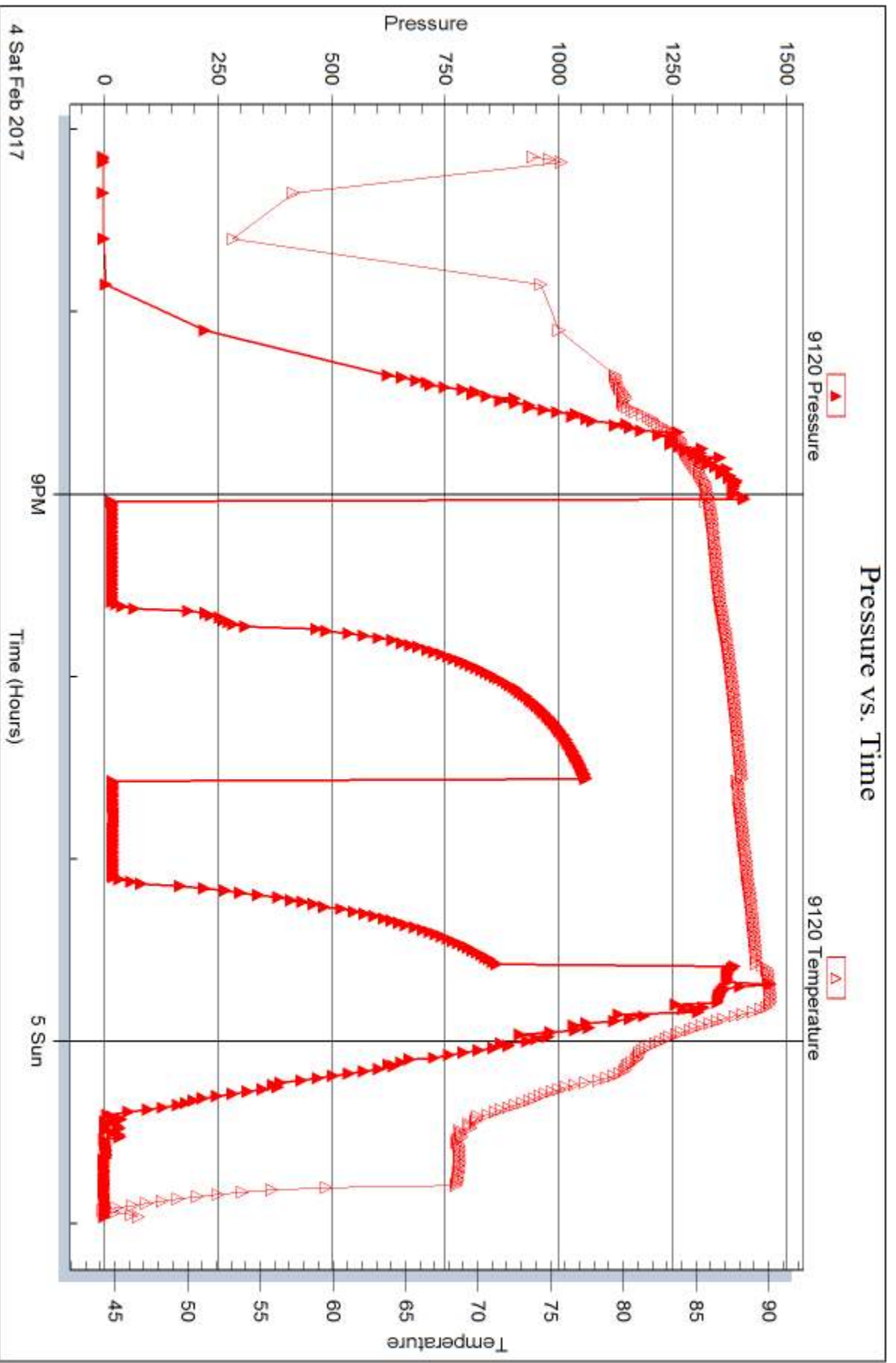
Serial #: 9120

Inside

Cobalt Energy LLC

S32-7s-16w Rooks, KS

DST Test Number: 1



Triobite Testing, Inc

Ref. No: 64673

Printed: 2017.02.07 @ 09:01:33



## DRILL STEM TEST REPORT

Prepared For: **Cobalt Energy LLC**

PO Box 8037  
Wichita KS 67208

ATTN: Nicholas Hess/Corey

**S32-7s-16w Rooks,KS**

**Taylor Trust 'A' #1-32**

Start Date: 2017.02.05 @ 14:25:00

End Date: 2017.02.05 @ 21:34:45

Job Ticket #: 64674                      DST #: 2

Trilobite Testing, Inc  
PO Box 362 Hays, KS 67601  
ph: 785-625-4778 fax: 785-625-5620

Printed: 2017.02.07 @ 09:01:04





**TRILOBITE  
TESTING, INC**

# DRILL STEM TEST REPORT

Cobalt Energy LLC

**Taylor Trust 'A' #1-32**

PO Box 8037  
Wichita KS 67208

**S32-7s-16w Rooks,KS**

ATTN: Nicholas Hess/Corey

Job Ticket: 64674

**DST#: 2**

Test Start: 2017.02.05 @ 14:25:00

## GENERAL INFORMATION:

Formation: **LKC 'C-G'**  
 Deviated: No Whipstock: ft (KB)  
 Time Tool Opened: 16:06:15  
 Time Test Ended: 21:34:45  
 Interval: **2962.00 ft (KB) To 3070.00 ft (KB) (TVD)**  
 Total Depth: 3070.00 ft (KB) (TVD)  
 Hole Diameter: 7.88 inches Hole Condition: Fair  
 Test Type: Conventional Bottom Hole (Reset)  
 Tester: Spencer J. Staab  
 Unit No: 84  
 Reference Elevations: 1762.00 ft (KB)  
 1757.00 ft (CF)  
 KB to GR/CF: 5.00 ft

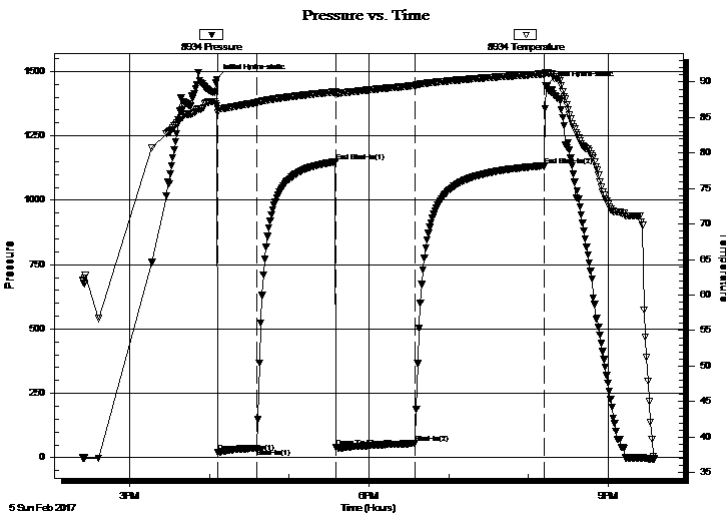
## Serial #: 8934

Inside

Press@RunDepth: 56.28 psig @ 2970.00 ft (KB) Capacity: 8000.00 psig  
 Start Date: 2017.02.05 End Date: 2017.02.05 Last Calib.: 2017.02.05  
 Start Time: 14:25:05 End Time: 21:34:44 Time On Btm: 2017.02.05 @ 16:06:00  
 Time Off Btm: 2017.02.05 @ 20:13:00

TEST COMMENT: 30-IF-Weak Blow ; Built from a surface blow to 2 1/4"  
 60-ISI-No Blow Back  
 60-FF-Very Weak Blow ; Built from a surface blow to 1"  
 90-FSI-No Blow Back

## PRESSURE SUMMARY



Time (Min.)	Pressure (psig)	Temp (deg F)	Annotation
0	1470.72	86.63	Initial Hydro-static
1	19.88	85.67	Open To Flow (1)
30	37.33	87.09	Shut-In(1)
89	1149.62	88.61	End Shut-In(1)
90	40.07	88.24	Open To Flow (2)
149	56.28	89.51	Shut-In(2)
246	1133.74	91.14	End Shut-In(2)
247	1443.22	91.35	Final Hydro-static

## Recovery

Length (ft)	Description	Volume (bbl)
80.00	Mud 100% M	0.87

\* Recovery from multiple tests

## Gas Rates

Choke (inches)	Pressure (psig)	Gas Rate (Mcf/d)



TRILOBITE TESTING, INC.

# DRILL STEM TEST REPORT

Cobalt Energy LLC

**Taylor Trust 'A' #1-32**

PO Box 8037  
Wichita KS 67208

**S32-7s-16w Rooks,KS**

ATTN: Nicholas Hess/Corey

Job Ticket: 64674

**DST#: 2**

Test Start: 2017.02.05 @ 14:25:00

## GENERAL INFORMATION:

Formation: **LKC 'C-G'**

Deviated: No Whipstock: ft (KB)

Time Tool Opened: 16:06:15

Time Test Ended: 21:34:45

Test Type: Conventional Bottom Hole (Reset)

Tester: Spencer J. Staab

Unit No: 84

**Interval: 2962.00 ft (KB) To 3070.00 ft (KB) (TVD)**

Total Depth: 3070.00 ft (KB) (TVD)

Hole Diameter: 7.88 inches Hole Condition: Fair

Reference Elevations: 1762.00 ft (KB)

1757.00 ft (CF)

KB to GR/CF: 5.00 ft

**Serial #: 9120** Inside

Press@RunDepth: psig @ 2970.00 ft (KB)

Start Date: 2017.02.05 End Date: 2017.02.05

Start Time: 14:25:15 End Time: 21:34:45

Capacity: 8000.00 psig

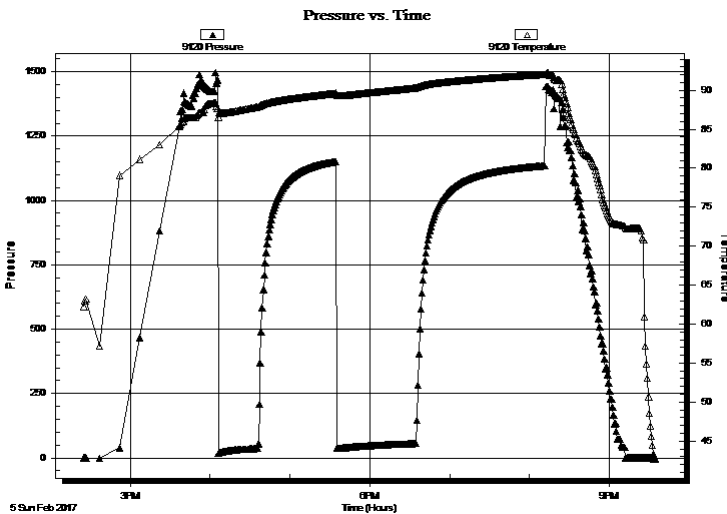
Last Calib.: 2017.02.05

Time On Btm:

Time Off Btm:

TEST COMMENT: 30-IF-Weak Blow ; Built from a surface blow to 2 1/4"  
60-ISI-No Blow Back  
60-FF-Very Weak Blow ; Built from a surface blow to 1"  
90-FSI-No Blow Back

## PRESSURE SUMMARY



Time (Min.)	Pressure (psig)	Temp (deg F)	Annotation

## Recovery

Length (ft)	Description	Volume (bbl)
80.00	Mud 100% M	0.87

## Gas Rates

Choke (inches)	Pressure (psig)	Gas Rate (Mcf/d)

\* Recovery from multiple tests



**TRILOBITE  
TESTING, INC.**

# DRILL STEM TEST REPORT

**TOOL DIAGRAM**

Cobalt Energy LLC

**Taylor Trust 'A' #1-32**

PO Box 8037  
Wichita KS 67208

**S32-7s-16w Rooks,KS**

Job Ticket: 64674

**DST#: 2**

ATTN: Nicholas Hess/Corey

Test Start: 2017.02.05 @ 14:25:00

## Tool Information

Drill Pipe:	Length: 2916.00 ft	Diameter: 3.80 inches	Volume: 40.90 bbl	Tool Weight: 2200.00 lb
Heavy Wt. Pipe:	Length: ft	Diameter: inches	Volume: - bbl	Weight set on Packer: 25000.00 lb
Drill Collar:	Length: 28.00 ft	Diameter: 2.25 inches	Volume: 0.14 bbl	Weight to Pull Loose: 44000.00 lb
			<u>Total Volume: - bbl</u>	Tool Chased ft
Drill Pipe Above KB:	5.00 ft			String Weight: Initial 42000.00 lb
Depth to Top Packer:	2962.00 ft			Final 42000.00 lb
Depth to Bottom Packer:	ft			
Interval between Packers:	108.00 ft			
Tool Length:	131.00 ft			
Number of Packers:	1	Diameter: 6.75 inches		

Tool Comments:

## Tool Description

Tool Description	Length (ft)	Serial No.	Position	Depth (ft)	Accum. Lengths
Change Over Sub	1.00			2940.00	
Shut In Tool	5.00			2945.00	
Hydraulic tool	5.00			2950.00	
Safety Joint	3.00			2953.00	
Packer	5.00			2958.00	23.00 Bottom Of Top Packer
Packer	4.00			2962.00	
Stubb	1.00			2963.00	
Perforations	6.00			2969.00	
Change Over Sub	1.00			2970.00	
Recorder	0.00	9120	Inside	2970.00	
Recorder	0.00	8934	Inside	2970.00	
Drill Pipe	95.00			3065.00	
Change Over Sub	1.00			3066.00	
Bullnose	4.00			3070.00	108.00 Bottom Packers & Anchor

**Total Tool Length: 131.00**



**TRILOBITE  
TESTING, INC**

# DRILL STEM TEST REPORT

## FLUID SUMMARY

Cobalt Energy LLC

**Taylor Trust 'A' #1-32**

PO Box 8037  
Wichita KS 67208

**S32-7s-16w Rooks,KS**

Job Ticket: 64674

**DST#: 2**

ATTN: Nicholas Hess/Corey

Test Start: 2017.02.05 @ 14:25:00

### Mud and Cushion Information

Mud Type: Gel Chem

Cushion Type:

Oil API:

deg API

Mud Weight: 9.00 lb/gal

Cushion Length:

ft

Water Salinity:

ppm

Viscosity: 44.00 sec/qt

Cushion Volume:

bbbl

Water Loss: 7.79 in<sup>3</sup>

Gas Cushion Type:

Resistivity: ohm.m

Gas Cushion Pressure:

psig

Salinity: 2600.00 ppm

Filter Cake: inches

### Recovery Information

Recovery Table

Length ft	Description	Volume bbl
80.00	Mud 100% M	0.867

Total Length: 80.00 ft      Total Volume: 0.867 bbl

Num Fluid Samples: 0

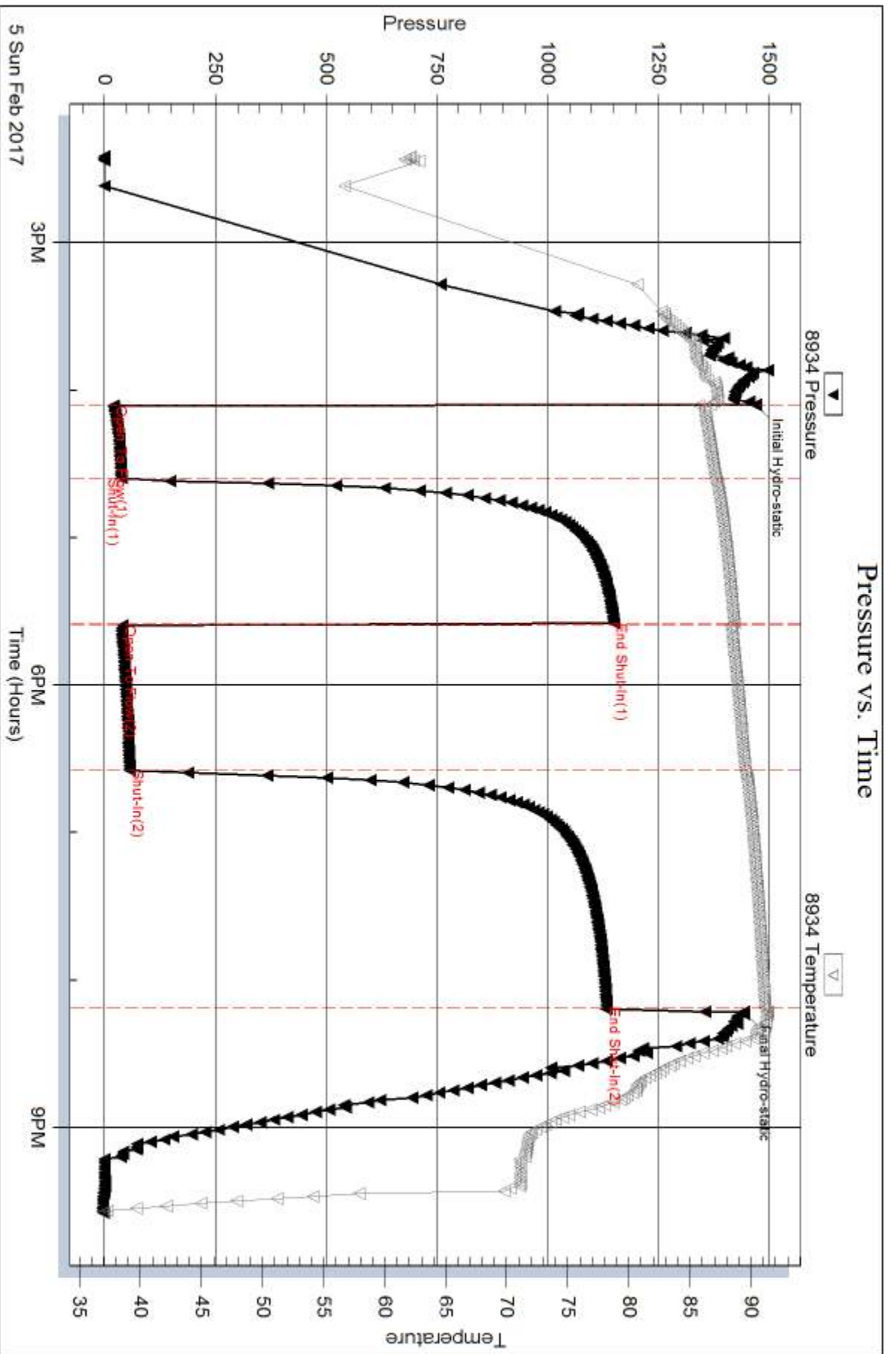
Num Gas Bombs: 0

Serial #:

Laboratory Name:

Laboratory Location:

Recovery Comments:



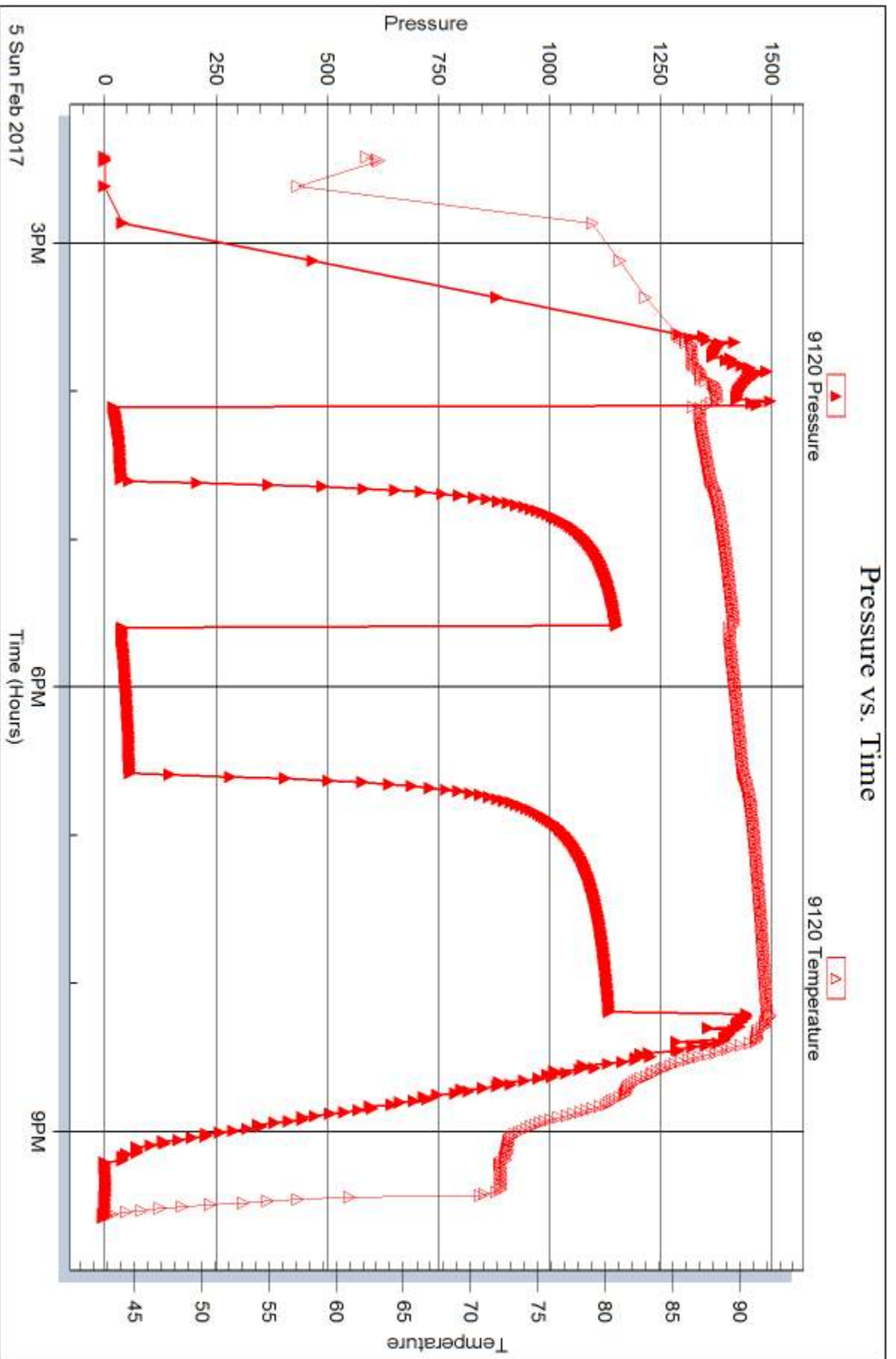
Serial #: 9120

Inside

Cobalt Energy LLC

S32-7s-16w Rooks, KS

DST Test Number: 2



Trilobite Testing, Inc

Ref. No: 64674

Printed: 2017.02.07 @ 09:01:05



## DRILL STEM TEST REPORT

Prepared For: **Cobalt Energy LLC**

PO Box 8037  
Wichita KS 67208

ATTN: Nicholas Hess/Corey

**S32-7s-16w Rooks,KS**

**Taylor Trust 'A' #1-32**

Start Date: 2017.02.06 @ 07:31:00

End Date: 2017.02.06 @ 12:26:15

Job Ticket #: 64675                      DST #: 3

Trilobite Testing, Inc  
PO Box 362 Hays, KS 67601  
ph: 785-625-4778 fax: 785-625-5620

Printed: 2017.02.07 @ 09:00:06



**TRILOBITE TESTING, INC.**

# DRILL STEM TEST REPORT

Cobalt Energy LLC

**Taylor Trust 'A' #1-32**

PO Box 8037  
Wichita KS 67208

**S32-7s-16w Rooks,KS**

ATTN: Nicholas Hess/Corey

Job Ticket: 64675

**DST#: 3**

Test Start: 2017.02.06 @ 07:31:00

## GENERAL INFORMATION:

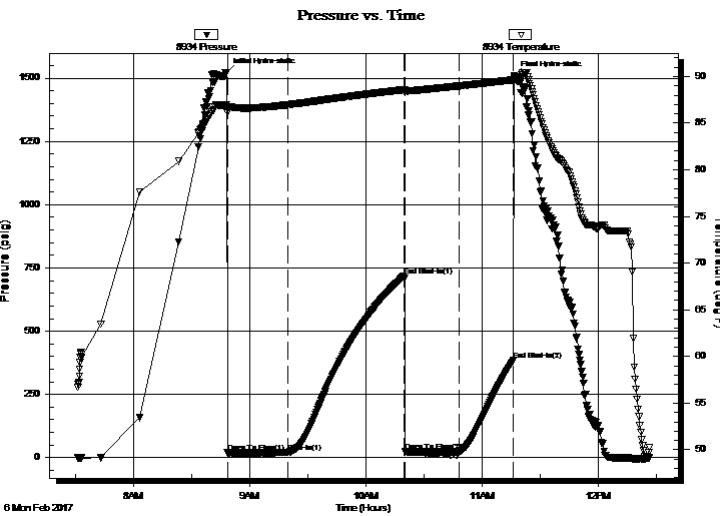
Formation: **LKC 'H-K'**  
 Deviated: No Whipstock: ft (KB)  
 Time Tool Opened: 08:48:15  
 Time Test Ended: 12:26:15  
 Interval: **3064.00 ft (KB) To 3170.00 ft (KB) (TVD)**  
 Total Depth: 3170.00 ft (KB) (TVD)  
 Hole Diameter: 7.88 inches Hole Condition: Fair  
 Test Type: Conventional Bottom Hole (Reset)  
 Tester: Spencer J. Staab  
 Unit No: 84  
 Reference Elevations: 1762.00 ft (KB)  
 1757.00 ft (CF)  
 KB to GR/CF: 5.00 ft

## Serial #: 8934

Inside

Press@RunDepth: 23.46 psig @ 3070.00 ft (KB) Capacity: 8000.00 psig  
 Start Date: 2017.02.06 End Date: 2017.02.06 Last Calib.: 2017.02.06  
 Start Time: 07:31:05 End Time: 12:26:14 Time On Btm: 2017.02.06 @ 08:48:00  
 Time Off Btm: 2017.02.06 @ 11:16:30

TEST COMMENT: 30-IF-Weak Blow ; Built from a surface blow to 1"  
 60-ISI-No Blow Back  
 30-FF-No Blow  
 30-FSI-No Blow Back



## PRESSURE SUMMARY

Time (Min.)	Pressure (psig)	Temp (deg F)	Annotation
0	1522.43	87.01	Initial Hydro-static
1	19.47	86.12	Open To Flow (1)
32	20.27	86.97	Shut-In(1)
92	719.25	88.59	End Shut-In(1)
92	23.54	88.32	Open To Flow (2)
120	23.46	88.98	Shut-In(2)
148	383.75	89.63	End Shut-In(2)
149	1507.94	89.79	Final Hydro-static

## Recovery

Length (ft)	Description	Volume (bbl)
10.00	Mud	0.05

\* Recovery from multiple tests

## Gas Rates

Choke (inches)	Pressure (psig)	Gas Rate (Mcf/d)





**TRILOBITE  
TESTING, INC.**

# DRILL STEM TEST REPORT

Cobalt Energy LLC

**Taylor Trust 'A' #1-32**

PO Box 8037  
Wichita KS 67208

**S32-7s-16w Rooks,KS**

ATTN: Nicholas Hess/Corey

Job Ticket: 64675

**DST#: 3**

Test Start: 2017.02.06 @ 07:31:00

## GENERAL INFORMATION:

Formation: **LKC 'H-K'**

Deviated: No Whipstock: ft (KB)

Time Tool Opened: 08:48:15

Time Test Ended: 12:26:15

**Interval: 3064.00 ft (KB) To 3170.00 ft (KB) (TVD)**

Total Depth: 3170.00 ft (KB) (TVD)

Hole Diameter: 7.88 inches Hole Condition: Fair

Test Type: Conventional Bottom Hole (Reset)

Tester: Spencer J. Staab

Unit No: 84

Reference Elevations: 1762.00 ft (KB)

1757.00 ft (CF)

KB to GR/CF: 5.00 ft

**Serial #: 9120**

**Inside**

Press@RunDepth: psig @ 3070.00 ft (KB)

Start Date: 2017.02.06

End Date:

2017.02.06

Start Time: 07:31:15

End Time:

12:26:15

Capacity: 8000.00 psig

Last Calib.:

2017.02.06

Time On Btm:

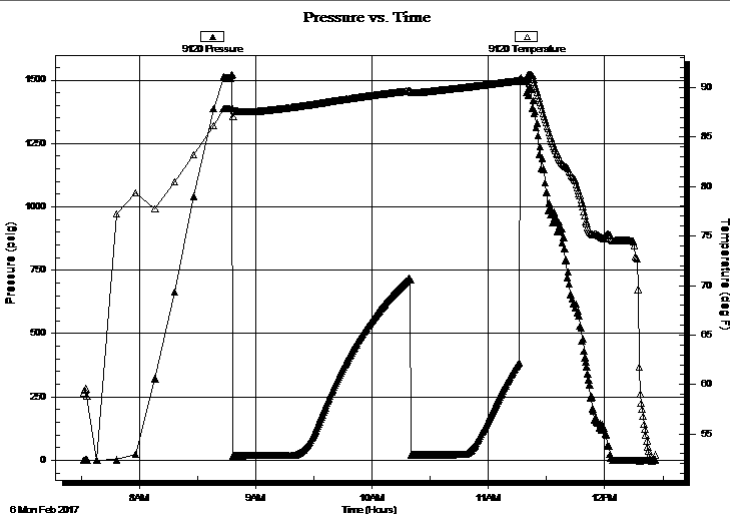
Time Off Btm:

**TEST COMMENT:** 30-IF-Weak Blow ; Built from a surface blow to 1"

60-ISI-No Blow Back

30-FF-No Blow

30-FSI-No Blow Back



## PRESSURE SUMMARY

Time (Min.)	Pressure (psig)	Temp (deg F)	Annotation

## Recovery

Length (ft)	Description	Volume (bbl)
10.00	Mud	0.05

## Gas Rates

	Choke (inches)	Pressure (psig)	Gas Rate (Mcf/d)

\* Recovery from multiple tests



**TRILOBITE  
TESTING, INC**

# DRILL STEM TEST REPORT

**TOOL DIAGRAM**

Cobalt Energy LLC

**Taylor Trust 'A' #1-32**

PO Box 8037  
Wichita KS 67208

**S32-7s-16w Rooks,KS**

Job Ticket: 64675

**DST#: 3**

ATTN: Nicholas Hess/Corey

Test Start: 2017.02.06 @ 07:31:00

## Tool Information

Drill Pipe:	Length: 2917.00 ft	Diameter: 3.80 inches	Volume: 40.92 bbl	Tool Weight: 2200.00 lb
Heavy Wt. Pipe:	Length: ft	Diameter: inches	Volume: - bbl	Weight set on Packer: 25000.00 lb
Drill Collar:	Length: 151.00 ft	Diameter: 2.25 inches	Volume: 0.74 bbl	Weight to Pull Loose: 44000.00 lb
			<u>Total Volume: - bbl</u>	Tool Chased ft
Drill Pipe Above KB:	27.00 ft			String Weight: Initial 42000.00 lb
Depth to Top Packer:	3064.00 ft			Final 42000.00 lb
Depth to Bottom Packer:	ft			
Interval between Packers:	106.00 ft			
Tool Length:	129.00 ft			
Number of Packers:	1	Diameter: 6.75 inches		

Tool Comments:

## Tool Description

Tool Description	Length (ft)	Serial No.	Position	Depth (ft)	Accum. Lengths
Change Over Sub	1.00			3042.00	
Shut In Tool	5.00			3047.00	
Hydraulic tool	5.00			3052.00	
Safety Joint	3.00			3055.00	
Packer	5.00			3060.00	23.00 Bottom Of Top Packer
Packer	4.00			3064.00	
Stubb	1.00			3065.00	
Perforations	4.00			3069.00	
Change Over Sub	1.00			3070.00	
Recorder	0.00	9120	Inside	3070.00	
Recorder	0.00	8934	Inside	3070.00	
Drill Pipe	95.00			3165.00	
Change Over Sub	1.00			3166.00	
Bullnose	4.00			3170.00	106.00 Bottom Packers & Anchor

**Total Tool Length: 129.00**



**TRILOBITE  
TESTING, INC**

# DRILL STEM TEST REPORT

**FLUID SUMMARY**

Cobalt Energy LLC

**Taylor Trust 'A' #1-32**

PO Box 8037  
Wichita KS 67208

**S32-7s-16w Rooks,KS**

Job Ticket: 64675

**DST#: 3**

ATTN: Nicholas Hess/Corey

Test Start: 2017.02.06 @ 07:31:00

## Mud and Cushion Information

Mud Type: Gel Chem

Cushion Type:

Oil API:

deg API

Mud Weight: 9.00 lb/gal

Cushion Length:

ft

Water Salinity:

ppm

Viscosity: 40.00 sec/qt

Cushion Volume:

bbbl

Water Loss: 6.79 in<sup>3</sup>

Gas Cushion Type:

Resistivity: ohm.m

Gas Cushion Pressure:

psig

Salinity: 2800.00 ppm

Filter Cake: inches

## Recovery Information

Recovery Table

Length ft	Description	Volume bbl
10.00	Mud	0.049

Total Length: 10.00 ft      Total Volume: 0.049 bbl

Num Fluid Samples: 0

Num Gas Bombs: 0

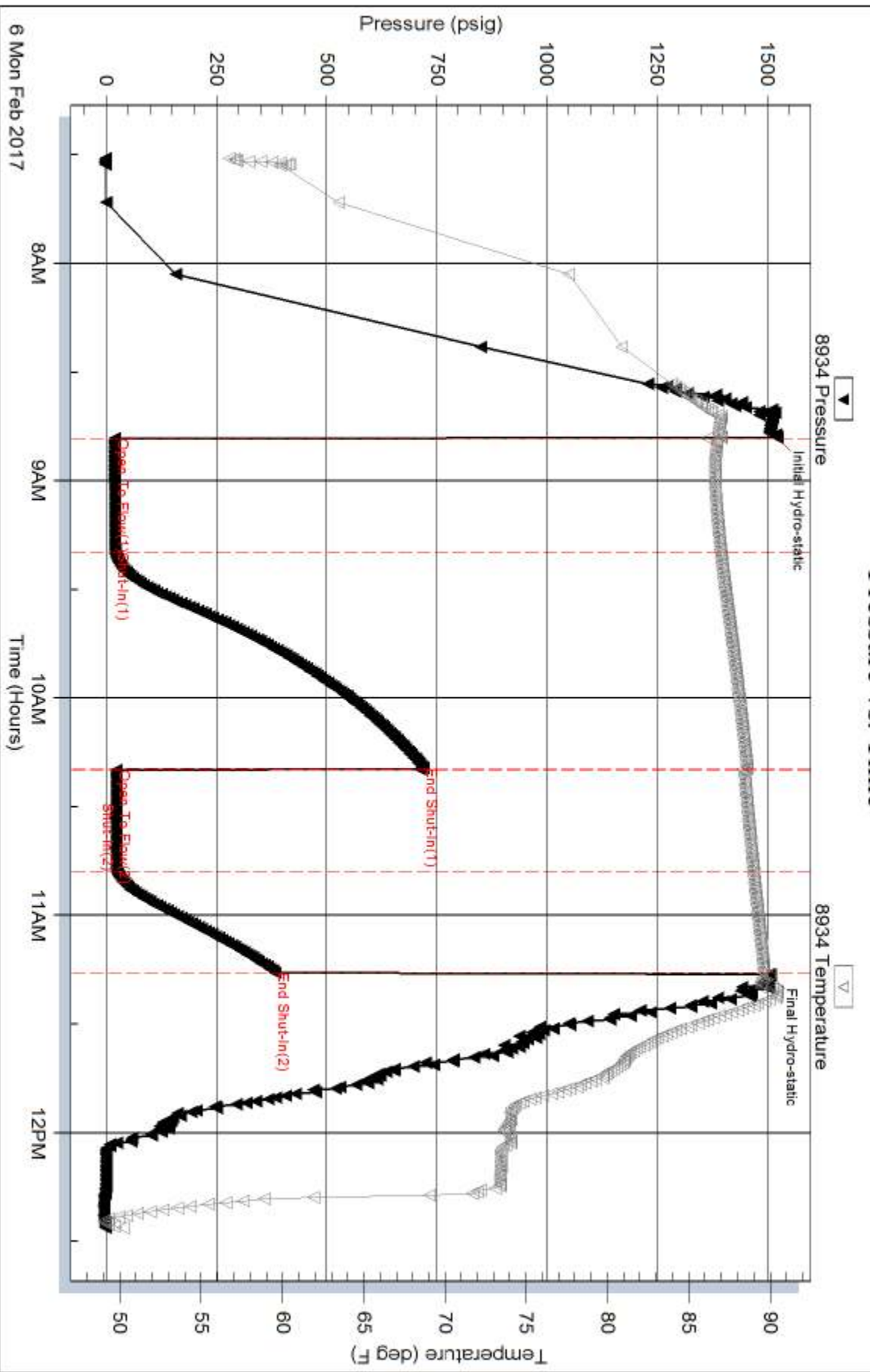
Serial #:

Laboratory Name:

Laboratory Location:

Recovery Comments:

### Pressure vs. Time



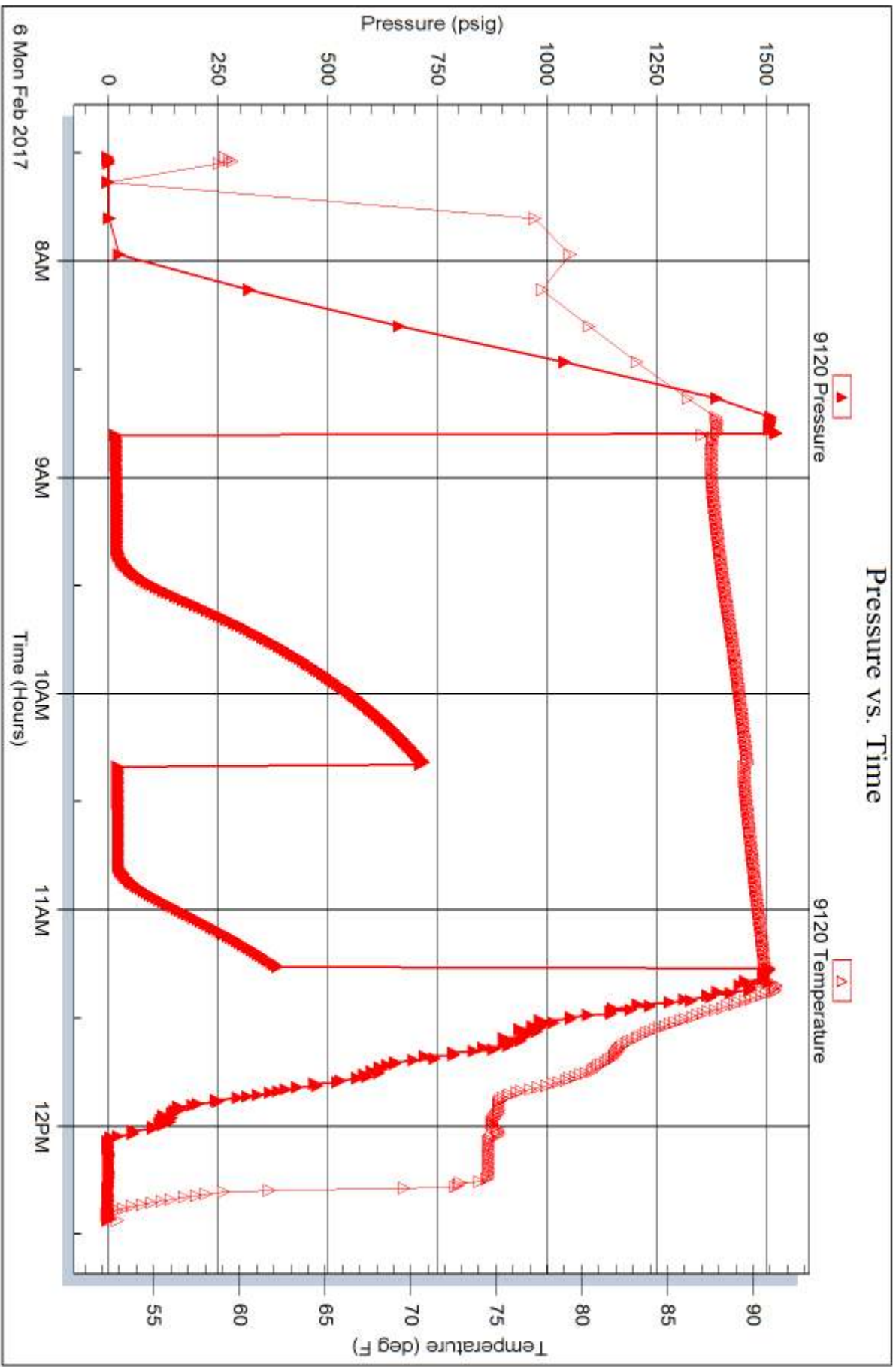
Serial #: 9120

Inside

Cobalt Energy LLC

S32-7s-16w Rooks, KS

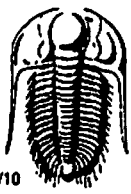
DST Test Number: 3



Trilobite Testing, Inc

Ref. No: 64675

Printed: 2017.02.07 @ 09:00:07



# TRILOBITE TESTING INC.

1515 Commerce Parkway • Hays, Kansas 67601

## Test Ticket

NO. 64673

Well Name & No. Taylor Trust 'a' #1-32 Test No. 1 Date 2/4/2017  
 Company Cobalt Energy LLC Elevation 1762 KB 17.57 GL  
 Address 115 S. Belmont #12 PO BOX 8037 Wichita Ks 67208  
 Co. Rep / Geo. Nicholas Hess / Corey Baker Rig Murfin Rig #16  
 Location: Sec. \_\_\_\_\_ Twp. \_\_\_\_\_ Rge. \_\_\_\_\_ Co. Rocks State Ks

Interval Tested 2850' - 2919' Zone Tested Lower Topeka  
 Anchor Length 69' Drill Pipe Run 2691' Mud Wt. 8.9  
 Top Packer Depth 2845' Drill Collars Run 151' Vis 49  
 Bottom Packer Depth 2850' Wt. Pipe Run — WL 7.2  
 Total Depth 2919' Chlorides 3,000 ppm System LCM 2#

Blow Description 57 - Very Weak Blow; Built from a surface blow to 1 inch  
50 - No Blow Back  
77 - No Blow  
750 - No Blow Back

Rec	Feet of	%gas	%oil	%water	%mud
<u>20'</u>	<u>Oil Speckled Mud</u>	<u>1&lt;</u>		<u>99</u>	
Rec _____	Feet of _____	%gas _____	%oil _____	%water _____	%mud _____
Rec _____	Feet of _____	%gas _____	%oil _____	%water _____	%mud _____
Rec _____	Feet of _____	%gas _____	%oil _____	%water _____	%mud _____
Rec _____	Feet of _____	%gas _____	%oil _____	%water _____	%mud _____

Rec Total 20' BHT 89° Gravity — API RW — @ — °F Chlorides — ppm

- (A) Initial Hydrostatic 1406
- (B) First Initial Flow 14
- (C) First Final Flow 15
- (D) Initial Shut-In 1060
- (E) Second Initial Flow 18
- (F) Second Final Flow 19
- (G) Final Shut-In 864
- (H) Final Hydrostatic 1385

- Test 1050
- Jars \_\_\_\_\_
- Safety Joint 75
- Circ Sub \_\_\_\_\_
- Hourly Standby \_\_\_\_\_
- Mileage 108 RT 81
- Sampler \_\_\_\_\_
- Straddle \_\_\_\_\_
- Shale Packer \_\_\_\_\_
- Extra Packer \_\_\_\_\_
- Extra Recorder \_\_\_\_\_
- Day Standby \_\_\_\_\_
- Accessibility \_\_\_\_\_
- Sub Total 1206

- T-On Location 17:50
- T-Started 19:09
- T-Open 21:01
- T-Pulled 23:34
- T-Out 00:55 2/5/2017

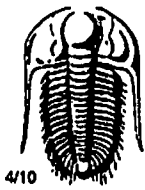
Initial Open 30  
 Initial Shut-In 60  
 Final Flow 30  
 Final Shut-In 30

Comments \_\_\_\_\_  
 Ruined Shale Packer \_\_\_\_\_  
 Ruined Packer \_\_\_\_\_  
 Extra Copies \_\_\_\_\_  
 Sub Total 0  
 Total 1206.00  
 MP/DST Disc't \_\_\_\_\_

Approved By \_\_\_\_\_ Our Representative Spencer J. Storch 785-259-005

TriLOBITE Testing Inc. shall not be liable for damaged of any kind of the property or personnel of the one for whom a test is made, or for any loss suffered or sustained, directly or indirectly, through the use of equipment, or its statements or opinion concerning the results of any test, tools lost or damaged in the hole shall be paid for at cost by the party for whom the test is made.

*Thank-you!*



# TRILOBITE TESTING INC.

1515 Commerce Parkway • Hays, Kansas 67601

## Test Ticket

NO. 64674

Well Name & No. Taylor Trust 'A' # 1-32 Test No. 2 Date 2/5/2017  
 Company Cobalt Energy L L C Elevation 1762 KB 1757 GL  
 Address 115 S. Belmont # 12 PO BOX Wichita KS 67208  
 Co. Rep / Geo. Nicholas Hess / Corey Baker Rig Muffin Drilling Co Rig # 16  
 Location: Sec. 32 Twp. 7A Rge. 16w Co. Roooks State KS

Interval Tested 2962' - 3070' Zone Tested 2.2C 'C-D'  
 Anchor Length 108' Drill Pipe Run 2916 Mud Wt. 9.1  
 Top Packer Depth 2957' Drill Collars Run 28 Vis 44  
 Bottom Packer Depth 2962' Wt. Pipe Run — WL 7.8  
 Total Depth 3070' Chlorides 2,600 ppm System LCM 2#

Blow Description J7 - Weak Blow; Built from a surface blow to 2 1/4 inches  
JSD - No Blow Back  
77 - Very Weak Blow; Built from a surface blow to 1 inch  
7SD - No Blow Back

Rec	Feet of	%gas	%oil	%water	%mud
<u>80'</u>	<u>Mud</u>			<u>100</u>	
Rec	Feet of	%gas	%oil	%water	%mud
Rec	Feet of	%gas	%oil	%water	%mud
Rec	Feet of	%gas	%oil	%water	%mud
Rec	Feet of	%gas	%oil	%water	%mud

Rec Total 80' BHT 91° Gravity — API RW — @ — °F Chlorides — ppm

- (A) Initial Hydrostatic 1470
- (B) First Initial Flow 19
- (C) First Final Flow 37
- (D) Initial Shut-In 1149
- (E) Second Initial Flow 40
- (F) Second Final Flow 56
- (G) Final Shut-In 1133
- (H) Final Hydrostatic 1443

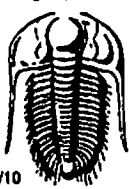
- Test 1050
- Jars
- Safety Joint 75
- Circ Sub
- Hourly Standby
- Mileage 108 R7 81
- Sampler
- Straddle
- Shale Packer
- Extra Packer
- Extra Recorder
- Day Standby
- Accessibility
- Sub Total 1206

- T-On Location 14:05
- T-Started 14:25
- T-Open 16:05
- T-Pulled 20:05
- T-Out 21:33
- Comments
- Ruined Shale Packer
- Ruined Packer
- Extra Copies
- Sub Total 0
- Total 1206.0
- MP/DST Disc't

Initial Open 30  
 Initial Shut-In 60  
 Final Flow 60  
 Final Shut-In 90

Approved By \_\_\_\_\_ Our Representative Spencer J. Clark Thank you!  
 Trilobite Testing Inc. shall not be liable for damaged of any kind of the property or personnel of the one for whom a test is made, or for any loss suffered or sustained, directly or indirectly, through the use of its equipment, or its statements or opinion concerning the results of any test, tools lost or damaged in the hole shall be paid for at cost by the party for whom the test is made.

705-759-1264



# TRILOBITE TESTING INC.

1515 Commerce Parkway • Hays, Kansas 67601

## Test Ticket

NO. 64675

Well Name & No. Taylor Trust 'a' #1-32 Test No. 3 Date 2/6/2017  
 Company Cobalt Energy L.L.C. Elevation 1762 KB 1757 GL  
 Address 115 S. Belmont #12 PO BOX Wichita Ks 67208  
 Co. Rep / Geo. Nicholas Hess / Corey Baker Rig Murfin Drilling Co Rig#16  
 Location: Sec. 32 Twp. 7s Rge. 10w Co. Rooks State Ks

Interval Tested 3064' - 3070' Zone Tested 2HC 'H-K'  
 Anchor Length 106' Drill Pipe Run 2917 Mud Wt. 9.0  
 Top Packer Depth 3059' Drill Collars Run 28 Vis 50  
 Bottom Packer Depth 3064' Wt. Pipe Run — WL 6.8  
 Total Depth 3170' Chlorides 2,800 ppm System LCM 2#  
 Blow Description J7 - Weak Blow; Built from a surface blow to 1 inch  
JS0 - No Blow Back  
77 - No Blow  
7SD - No Blow Back

Rec	Feet of	%gas	%oil	%water	%mud
<u>10'</u>	<u>Mud</u>			<u>100</u>	
Rec	Feet of	%gas	%oil	%water	%mud
Rec	Feet of	%gas	%oil	%water	%mud
Rec	Feet of	%gas	%oil	%water	%mud
Rec	Feet of	%gas	%oil	%water	%mud

Rec Total 10' BHT 90° Gravity — API RW —@ — ° F Chlorides — ppm

(A) Initial Hydrostatic <u>1522</u>	<input checked="" type="checkbox"/> Test <u>1050</u>	T-On Location <u>07:10</u>
(B) First Initial Flow <u>19</u>	<input type="checkbox"/> Jars	T-Started <u>07:31</u>
(C) First Final Flow <u>20</u>	<input checked="" type="checkbox"/> Safety Joint <u>75</u>	T-Open <u>08:47</u>
(D) Initial Shut-In <u>719</u>	<input type="checkbox"/> Circ Sub	T-Pulled <u>11:17</u>
(E) Second Initial Flow <u>23</u>	<input type="checkbox"/> Hourly Standby	T-Out <u>12:24</u>
(F) Second Final Flow <u>23</u>	<input checked="" type="checkbox"/> Mileage <u>108 R7</u> 81	Comments
(G) Final Shut-In <u>383</u>	<input type="checkbox"/> Sampler	
(H) Final Hydrostatic <u>1507</u>	<input type="checkbox"/> Straddle	
Initial Open <u>30</u>	<input type="checkbox"/> Shale Packer	<input type="checkbox"/> Ruined Shale Packer
Initial Shut-In <u>60</u>	<input type="checkbox"/> Extra Packer	<input type="checkbox"/> Ruined Packer
Final Flow <u>30</u>	<input type="checkbox"/> Extra Recorder	<input type="checkbox"/> Extra Copies
Final Shut-In <u>30</u>	<input type="checkbox"/> Day Standby	Sub Total <u>0</u>
	<input type="checkbox"/> Accessibility	Total <u>1206.00</u>
	Sub Total <u>1206</u>	MP/DST Disc't

Approved By \_\_\_\_\_ Our Representative Spencer J. Neal Thanks!  
 Trilobite Testing Inc. shall not be liable for damaged of any kind of the property or personnel of the one for whom a test is made, or for any loss suffered or sustained, directly or indirectly, through the use of its equipment, or its statements or opinion concerning the results of any test, tools lost or damaged in the hole shall be paid for at cost by the party for whom the test is made.  
 785-250-1156