



**TRILOBITE
TESTING, INC**

DRILL STEM TEST REPORT

Vincent Oil Corporation
200 W Douglas Ave # 725
Wichita, KS 67202
ATTN: Ken LeBlanc

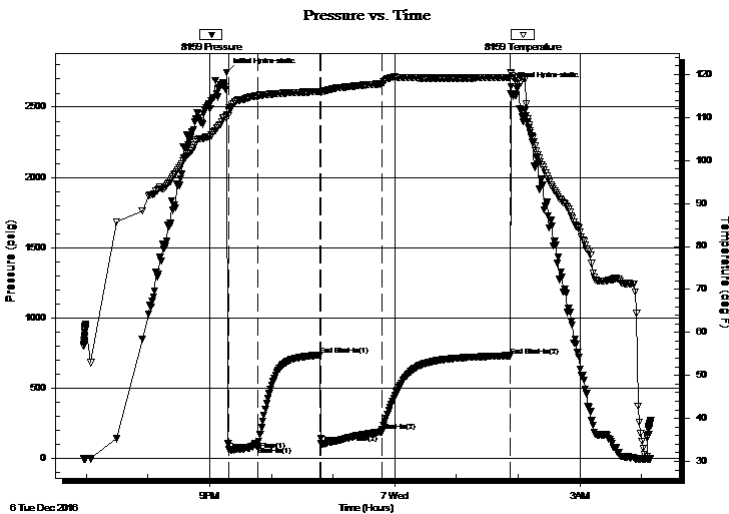
6-29S-22W Ford
Imel 3-6
Job Ticket: 63553 **DST#: 1**
Test Start: 2016.12.06 @ 18:57:24

GENERAL INFORMATION:

Formation: **Mississippi**
Deviated: No Whipstock: ft (KB)
Time Tool Opened: 21:18:39
Time Test Ended: 04:08:56
Interval: **5212.00 ft (KB) To 5265.00 ft (KB) (TVD)**
Total Depth: 5265.00 ft (KB) (TVD)
Hole Diameter: 7.88 inches Hole Condition: Good
Test Type: Conventional Bottom Hole (Initial)
Tester: Leal Cason
Unit No: 74
Reference Elevations: 2518.00 ft (KB)
2506.00 ft (CF)
KB to GR/CF: 12.00 ft

Serial #: 8159 Inside
Press@RunDepth: 190.30 psig @ 5213.00 ft (KB) Capacity: 8000.00 psig
Start Date: 2016.12.06 End Date: 2016.12.07 Last Calib.: 2016.12.07
Start Time: 18:57:25 End Time: 04:08:56 Time On Btm: 2016.12.06 @ 21:16:39
Time Off Btm: 2016.12.07 @ 01:53:24

TEST COMMENT: IF: Strong Blow , BOB in 45 seconds
IS: No Blow Back
FF: Strong Blow , BOB immediate, GTS in 5 minutes, Gauged & Caught Sample
FS: No Blow Back



PRESSURE SUMMARY

Time (Min.)	Pressure (psig)	Temp (deg F)	Annotation
0	2747.12	110.70	Initial Hydro-static
2	61.89	111.46	Open To Flow (1)
31	88.49	115.04	Shut-In(1)
91	736.18	116.05	End Shut-In(1)
92	109.17	115.81	Open To Flow (2)
151	190.30	117.85	Shut-In(2)
276	731.38	119.29	End Shut-In(2)
277	2645.96	120.14	Final Hydro-static

Recovery

Length (ft)	Description	Volume (bbl)
0.00	4859 GIP	0.00
310.00	GOCM 10%G 10%O 80%M	4.35
30.00	GCM 20%G 80%M	0.42

Gas Rates

	Choke (inches)	Pressure (psig)	Gas Rate (Mcf/d)
First Gas Rate	0.25	10.00	38.71
Last Gas Rate	0.25	26.00	64.09
Max. Gas Rate	0.25	26.00	64.09



**TRILOBITE
TESTING, INC**

DRILL STEM TEST REPORT

FLUID SUMMARY

Vincent Oil Corporation

6-29S-22W Ford

200 W Douglas Ave # 725
Wichita, KS 67202

Imel 3-6

Job Ticket: 63553

DST#: 1

ATTN: Ken LeBlanc

Test Start: 2016.12.06 @ 18:57:24

Mud and Cushion Information

Mud Type: Gel Chem

Cushion Type:

Oil API:

deg API

Mud Weight: 10.00 lb/gal

Cushion Length:

ft

Water Salinity:

ppm

Viscosity: 60.00 sec/qt

Cushion Volume:

bbbl

Water Loss: 7.99 in³

Gas Cushion Type:

Resistivity: ohm.m

Gas Cushion Pressure:

psig

Salinity: 6200.00 ppm

Filter Cake: 0.02 inches

Recovery Information

Recovery Table

Length ft	Description	Volume bbl
0.00	4859 GIP	0.000
310.00	GOCM 10%G 10%O 80%M	4.348
30.00	GCM 20%G 80%M	0.421

Total Length: 340.00 ft Total Volume: 4.769 bbl

Num Fluid Samples: 0

Num Gas Bombs: 0

Serial #:

Laboratory Name:

Laboratory Location:

Recovery Comments:

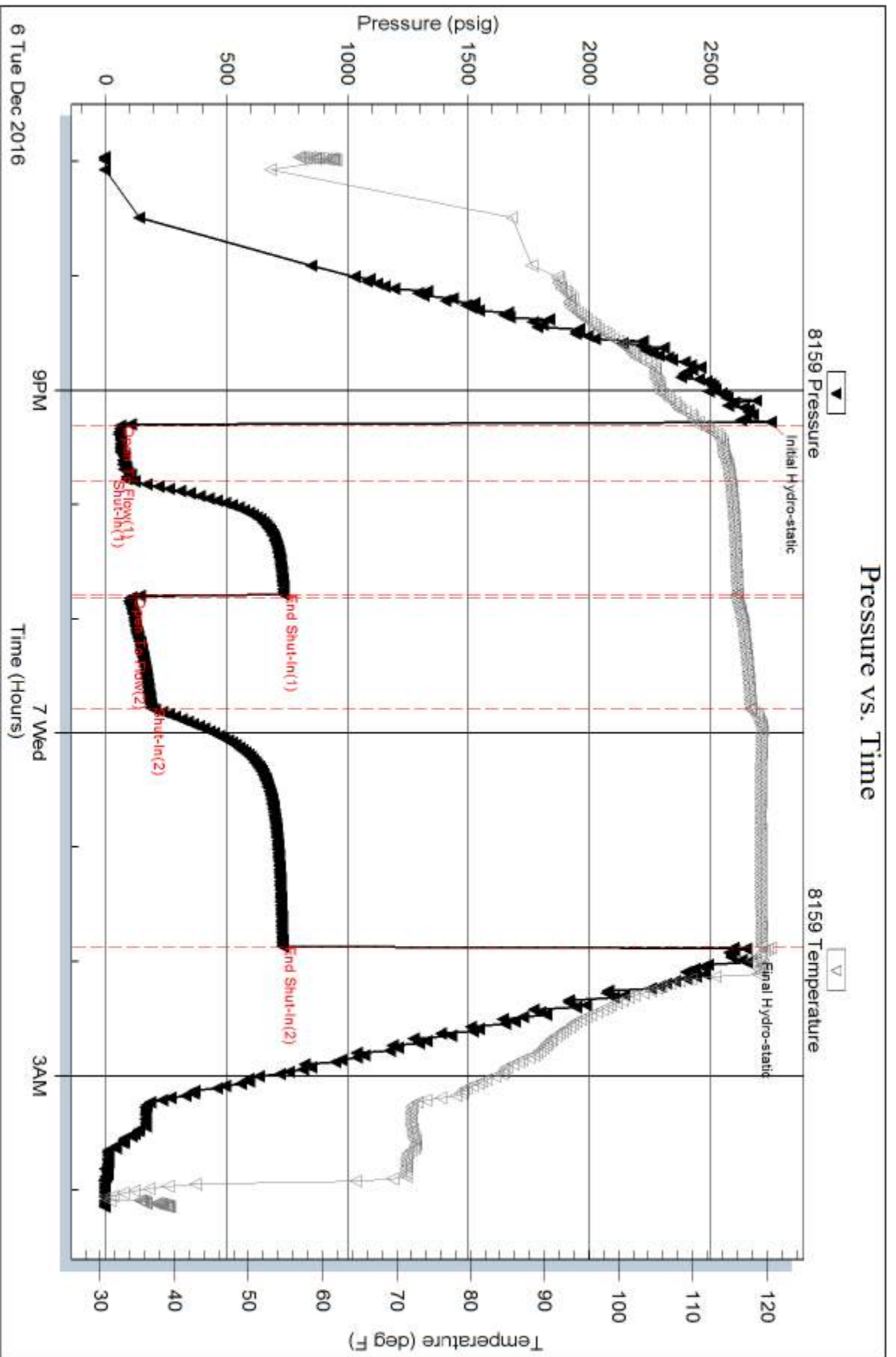
Serial #: 8159

Inside

Vincent Oil Corporation

Inel 3-6

DST Test Number: 1

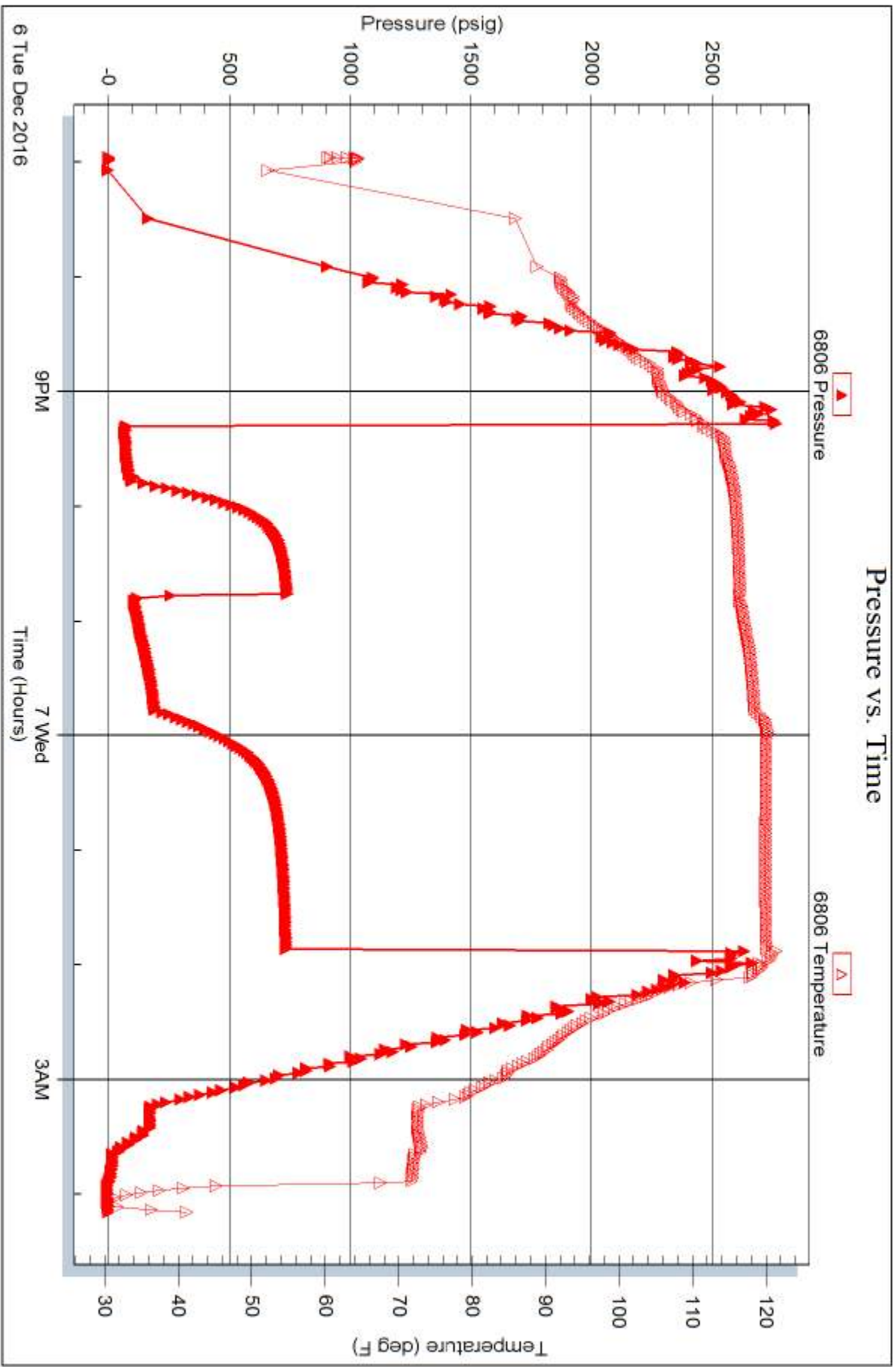


Serial #: 6806

Outside Vincent Oil Corporation

Inel 3-6

DST Test Number: 1



Tribble Testing, Inc

Ref. No: 63553

Printed: 2016.12.07 @ 07:54:02