



**DIAMOND TESTING**  
 P.O. Box 157  
 HOISINGTON, KANSAS 67544  
 (800) 542-7313

TIME ON: 21:32 3/13  
 TIME OFF: 03:57 3/14

**DRILL-STEM TEST TICKET**  
 FILE: MCMILLIAN1DST4

Company Blue Ridge Petroleum Corp. Lease & Well No. McMillian #1-14  
 Contractor Southwind Drlg Rig # 3 Charge to B.R.P.C.  
 Elevation 1484' KB Formation Simpson Effective Pay \_\_\_\_\_ Ft. Ticket No. F474  
 Date 3/14/17 Sec. 14 Twp. 23 S Range 4 W County Reno State KANSAS  
 Test Approved By Jim Musgrove Diamond Representative Jake Fahrenbruch

Formation Test No. 4 Interval Tested from 3726 ft. to 3744 ft. Total Depth 3744 ft.  
 Packer Depth 3721 ft. Size 6 3/4 in. Packer depth ----- ft. Size 6 3/4 in.  
 Packer Depth 3726 ft. Size 6 3/4 in. Packer depth ----- ft. Size 6 3/4 in.  
 Depth of Selective Zone Set -----

Top Recorder Depth (Inside) 3728 ft. Recorder Number 5951 Cap. 5000 P.S.I.  
 Bottom Recorder Depth (Outside) 3729 ft. Recorder Number 5586 Cap. 5000 P.S.I.  
 Below Straddle Recorder Depth ----- ft. Recorder Number ----- Cap. ----- P.S.I.

Mud Type CHEMICAL Viscosity 52 (4# LCM) Drill Collar Length 0 ft. I.D. 2 1/4 in.  
 Weight 9.3 Water Loss 8.8 cc. Weight Pipe Length 0 ft. I.D. 2 7/8 in.  
 Chlorides 1,800 P.P.M. Drill Pipe Length 3,701 ft. I.D. 3 1/2 in.  
 Jars: Make STERLING Serial Number ----- Test Tool Length 25 ft. Tool Size 3 1/2-IF in.  
 Did Well Flow? ----- Reversed Out ----- Anchor Length 18 ft. Size 4 1/2-FH in.  
 Main Hole Size 7 7/8 Tool Joint Size 4 1/2 XH in. Surface Choke Size 1 in. Bottom Choke Size 5/8 in.

Blow: 1st Open: Blow increased to 7.5". No blowback.  
 2nd Open: Blow increased to 9". No blowback.

Recovered 40 ft. of WCM 17% wtr, 83% mud  
 Recovered 125 ft. of Salt Water 100% wtr  
 Recovered \_\_\_\_\_ ft. of (oil specks in tools)

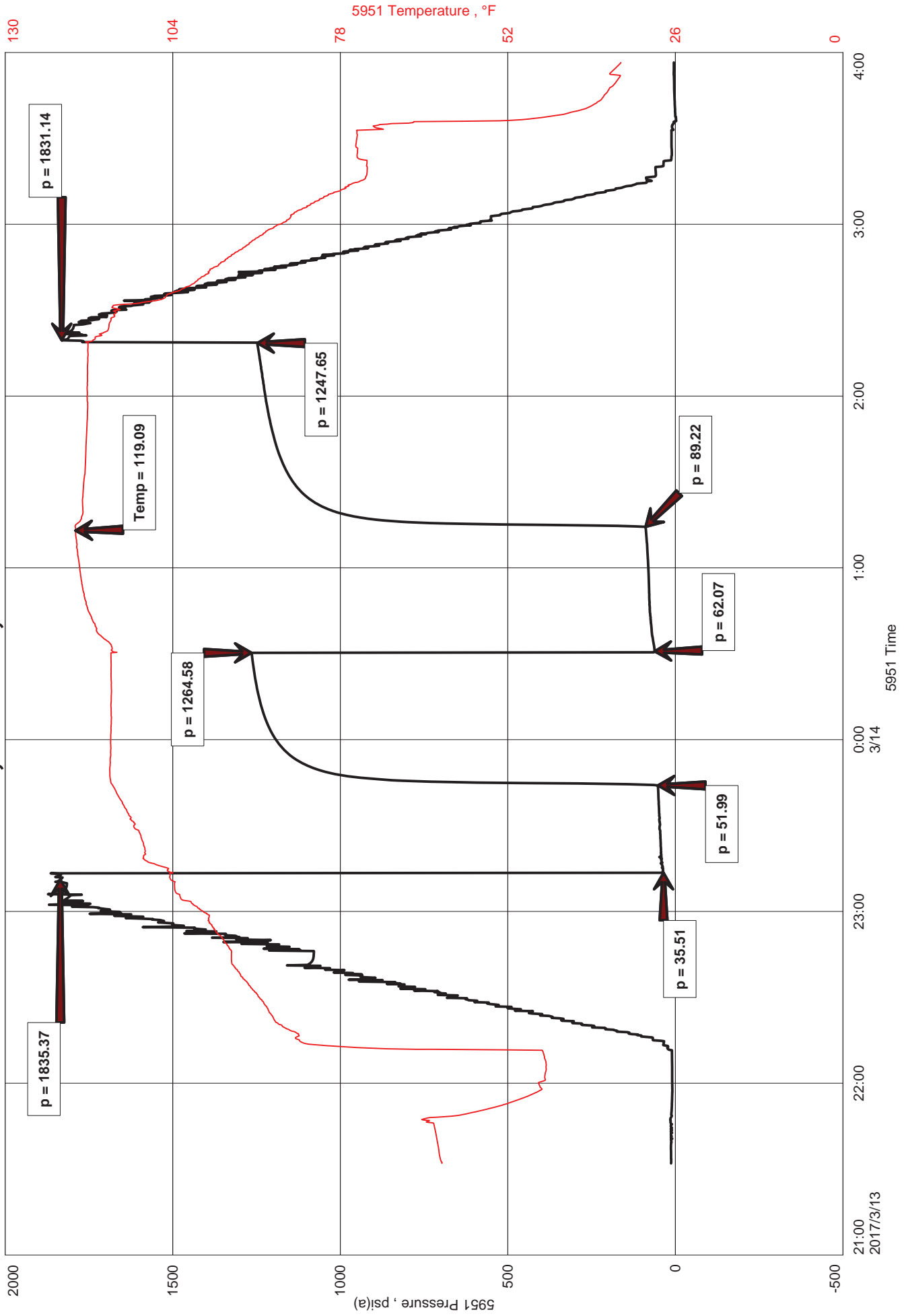
Recovered _____ ft. of <u>TOTAL RECOVERED FLUID: 165'</u>	Price Job
Recovered _____ ft. of _____	Other Charges
Remarks: <u>Chlorides: 58,500 PPM</u>	Insurance
<u>RW: .30 ohm @ 30 F</u>	
<u>PH: 7.0</u>	Total

Time Set Packer(s) 23:15 A.M. P.M. Time Started Off Bottom 02:15 A.M. P.M. Maximum Temperature 119 F

Initial Hydrostatic Pressure..... (A) 1836 P.S.I.  
 Initial Flow Period..... Minutes 30 (B) 36 P.S.I. to (C) 52 P.S.I.  
 Initial Closed In Period..... Minutes 45 (D) 1265 P.S.I.  
 Final Flow Period..... Minutes 45 (E) 62 P.S.I. to (F) 89 P.S.I.  
 Final Closed In Period..... Minutes 60 (G) 1248 P.S.I.  
 Final Hydrostatic Pressure..... (H) 1831 P.S.I.

Diamond Testing shall not be liable for damages of any kind to the property or personnel of the one for whom a test is made or for any loss suffered or sustained, directly or indirectly, through the use of its equipment, or its statement or opinion concerning the result of any test. Tools lost or damaged in the hole shall be paid for at cost by the party for whom the test is made.

# McMILLIAN #1-14, DST #4, SIMPSON 3726'-3744'





DIAMOND TESTING  
 P.O. Box 157  
 HOISINGTON, KANSAS 67544  
 (800) 542-7313  
 DRILL-STEM TEST TICKET  
 FILE: MCNELLIAN 10574

ON LOCATION: 21:10  
 START RECORDERS: 21:32 3/13  
 STOP RECORDERS: 03:57 3/14

Company BLUE RIDGE PETRO. CORP. Lease & Well No. MCNELLIAN #1-14  
 Contractor SOUTH WIND DRIG REB#3 Charge to B. R. P. C.  
 Elevation 1484' KB Formation SIMPSON Effective Pay --- Ft. Ticket No. F474  
 Date 3/14/17 Sec. 14 Twp. 23s Range 4W County RENO State KS  
 Test Approved By JIM MUSGROVE Diamond Representative JAKE FAHRENBRUCH

Formation Test No. 4 Interval Tested from 3726 ft. to 3744 ft. Total Depth 3744 ft.  
 Packer Depth 3721 ft. Size 6 3/4 in. Packer depth --- ft. Size 6 3/4 in.  
 Packer Depth 3726 ft. Size 6 3/4 in. Packer depth --- ft. Size 6 3/4 in.  
 Depth of Selective Zone Set ---

Top Recorder Depth (Inside) 3728 ft. Recorder Number 5951 Cap. 5000 P.S.I.  
 Bottom Recorder Depth (Outside) 3729 ft. Recorder Number 5586 Cap. 5000 P.S.I.  
 Below Straddle Recorder Depth --- ft. Recorder Number --- Cap. --- P.S.I.

Mud Type CHEMICAL Viscosity 52 (4\*LCM) Drill Collar Length --- ft. I.D. 2 1/4 in.  
 Weight 9.3 Water Loss 8.8 cc. Weight Pipe Length --- ft. I.D. 2 7/8 in.  
 Chlorides 1800 P.P.M. Drill Pipe Length 3701 ft. I.D. 3 1/2 in.  
 Jars: Make STERLING Serial Number --- Test Tool Length 25 ft. Tool Size 3 1/2-IF in.  
 Did Well Flow? --- Reversed Out --- Anchor Length 18 ft. Size 4 1/2-FH in.  
 Main Hole Size 7 7/8 Tool Joint Size 4 1/2XH in. Surface Choke Size 1 in. Bottom Choke Size 5/8 in.

Blow: 1st Open: BLOW INCREASED TO 7 1/2". NO BLOWBACK.  
 2nd Open: BLOW INCREASED TO 9". NO BLOWBACK.

Recovered 40 ft. of WCM 17" wtr, 83" mud  
 Recovered 125 ft. of SALT WATER 100" wtr  
 Recovered --- ft. of (OIL SPECKS FN TOOLS)  
 Recovered --- ft. of ---

Recovered --- ft. of TOTAL RECOVERED FLUID: 165'  
 Recovered --- ft. of ---  
 Remarks: CHLORIDES: 58,500 PPM  
RW: .30 @ 30F  
PH: 7.0  
 Price Job  
 Other Charges  
 Total 142 MRT (PRAT)

Time Set Packer(s) 23:15 A.M. P.M. Time Started Off Bottom 02:15 A.M. P.M. Maximum Temperature 119 °F

Initial Hydrostatic Pressure..... (A) 1836 P.S.I.  
 Initial Flow Period..... Minutes 30 (B) 36 P.S.I. to (C) 52 P.S.I.  
 Initial Closed In Period..... Minutes 45 (D) 1265 P.S.I.  
 Final Flow Period..... Minutes 45 (E) 62 P.S.I. to (F) 89 P.S.I.  
 Final Closed In Period..... Minutes 60 (G) 1248 P.S.I. THANKS!  
 Final Hydrostatic Pressure..... (H) 1831 P.S.I. Jake Fahrenbruch

Diamond Testing shall not be liable for damages of any kind to the property or personnel of the one for whom a test is made or for any loss suffered or sustained, directly or indirectly, through the use of its equipment, or its statement or opinion concerning the result of any test. Tools lost or damaged in the hole shall be paid for at cost by the party for whom the test is made.

# DIAMOND TESTING GENERAL REPORT

Jake Fahrenbruch, Tester

Cell: (620) 282-8977 / Office: (800) 542-7313



## TEST INFORMATION

<b>Well Name</b>	McMillian #1-14
<b>Company Name</b>	Blue Ridge Petroleum Corp.
<b>Formation</b>	DST #4 Simpson 3726'-3744'
<b>Test Type</b>	Bottom-Hole w/No extra equipment
<b>Surface Location</b>	Sec 14-23s-4w-Reno Co.-KS
<b>KB Elevation (SL)</b>	1484.000
<b>Gauge Name</b>	5951
<b>Start Test Date</b>	2017/03/13
<b>Start Test Time</b>	21:32:00
<b>Final Test Date</b>	2017/03/14
<b>Final Test Time</b>	03:57:00
<b>Job Number</b>	F474
<b>Contact</b>	Jonathan Allen
<b>Site Contact</b>	Jim Musgrove

## TEST RESULTS

Initial flow, blow increased to 7.5". No blowback.

Final flow, blow increased to 9". No blowback.

TOTAL RECOVERED FLUID: 165'

40' WCM 17% wtr, 83% mud

125' Salt Water 100% wtr

----- (oil specks in tools)

----- Chlorides: 58,500 PPM ----- RW: .30 ohm @ 30 F ----- PH: 7.0

## McMILLIAN #1-14, DST #4, SIMPSON 3726'-3744'

