



TRILOBITE TESTING, INC

DRILL STEM TEST REPORT

Pickrell Drilling Co. Inc.

28-14S-27W

100 S Main STE 505
Wichita Ks, 67202+3738

Albin 'I' #3

Job Ticket: 63495

DST#: 3

ATTN: Aaron Young/ Larry R

Test Start: 2016.11.09 @ 20:22:00

GENERAL INFORMATION:

Formation: **Ft. Scott**

Deviated: No Whipstock: ft (KB)

Time Tool Opened: 22:16:45

Time Test Ended: 01:33:08

Test Type: Conventional Bottom Hole (Reset)

Tester: Spencer J. Staab

Unit No: 84

Interval: 4172.00 ft (KB) To 4194.00 ft (KB) (TVD)

Reference Elevations: 2477.00 ft (KB)

Total Depth: 4194.00 ft (KB) (TVD)

2473.00 ft (CF)

Hole Diameter: 7.88 inches Hole Condition: Poor

KB to GR/CF: 4.00 ft

Serial #: 8353

Inside

Press@RunDepth: 23.28 psig @ 4173.00 ft (KB)

Capacity: 8000.00 psig

Start Date: 2016.11.09

End Date:

2016.11.10

Last Calib.:

2016.11.10

Start Time: 20:22:15

End Time:

01:33:08

Time On Btm:

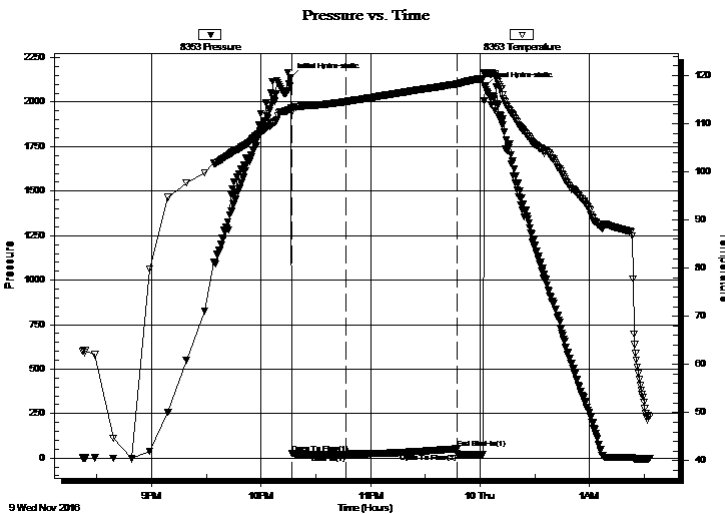
2016.11.09 @ 22:16:30

Time Off Btm:

2016.11.10 @ 00:02:30

TEST COMMENT: 30-IF-Very Weak Surface Blow ; Built to 3/4 inch
60-ISI-No Blow Back
17-FF-No Blow ; pulled tool

PRESSURE SUMMARY



Time (Min.)	Pressure (psig)	Temp (deg F)	Annotation
0	2138.78	113.29	Initial Hydro-static
1	27.08	112.43	Open To Flow (1)
31	23.28	114.62	Shut-In(1)
91	52.50	118.23	End Shut-In(1)
91	24.09	118.24	Open To Flow (2)
106	2089.77	120.51	Final Hydro-static

Recovery

Length (ft)	Description	Volume (bbl)
3.00	Mud 100% M	0.04

Gas Rates

Choke (inches)	Pressure (psig)	Gas Rate (Mcf/d)

* Recovery from multiple tests



**TRILOBITE
TESTING, INC**

DRILL STEM TEST REPORT

Pickrell Drilling Co. Inc.

28-14S-27W

100 S Main STE 505
Wichita Ks, 67202+3738

Albin 'I' #3

Job Ticket: 63495

DST#: 3

ATTN: Aaron Young/ Larry R

Test Start: 2016.11.09 @ 20:22:00

GENERAL INFORMATION:

Formation: **Ft. Scott**

Deviated: No Whipstock: ft (KB)

Time Tool Opened: 22:16:45

Time Test Ended: 01:33:08

Test Type: Conventional Bottom Hole (Reset)

Tester: Spencer J. Staab

Unit No: 84

Interval: 4172.00 ft (KB) To 4194.00 ft (KB) (TVD)

Total Depth: 4194.00 ft (KB) (TVD)

Hole Diameter: 7.88 inches Hole Condition: Poor

Reference Elevations: 2477.00 ft (KB)

2473.00 ft (CF)

KB to GR/CF: 4.00 ft

Serial #: 9120 Outside

Press@RunDepth: psig @ 4173.00 ft (KB)

Start Date: 2016.11.09

End Date:

2016.11.10

Start Time: 20:22:15

End Time:

01:33:15

Capacity: 8000.00 psig

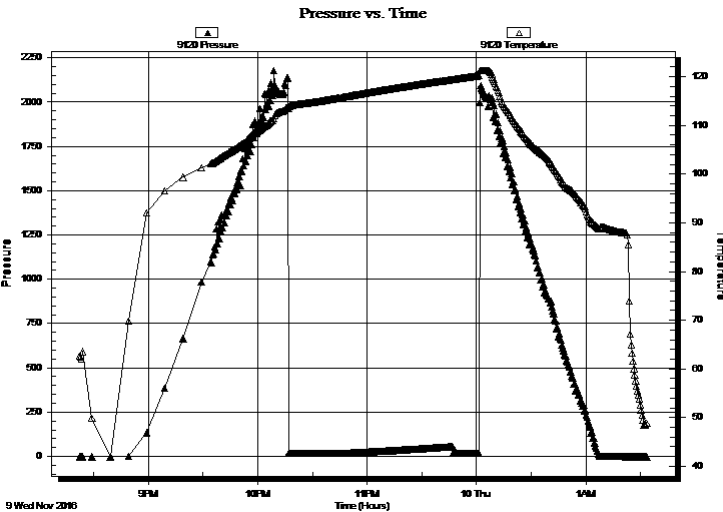
Last Calib.:

2016.11.10

Time On Btm:

Time Off Btm:

TEST COMMENT: 30-IF-Very Weak Surface Blow ; Built to 3/4 inch
60-ISI-No Blow Back
17-FF-No Blow ; pulled tool



PRESSURE SUMMARY

Time (Min.)	Pressure (psig)	Temp (deg F)	Annotation

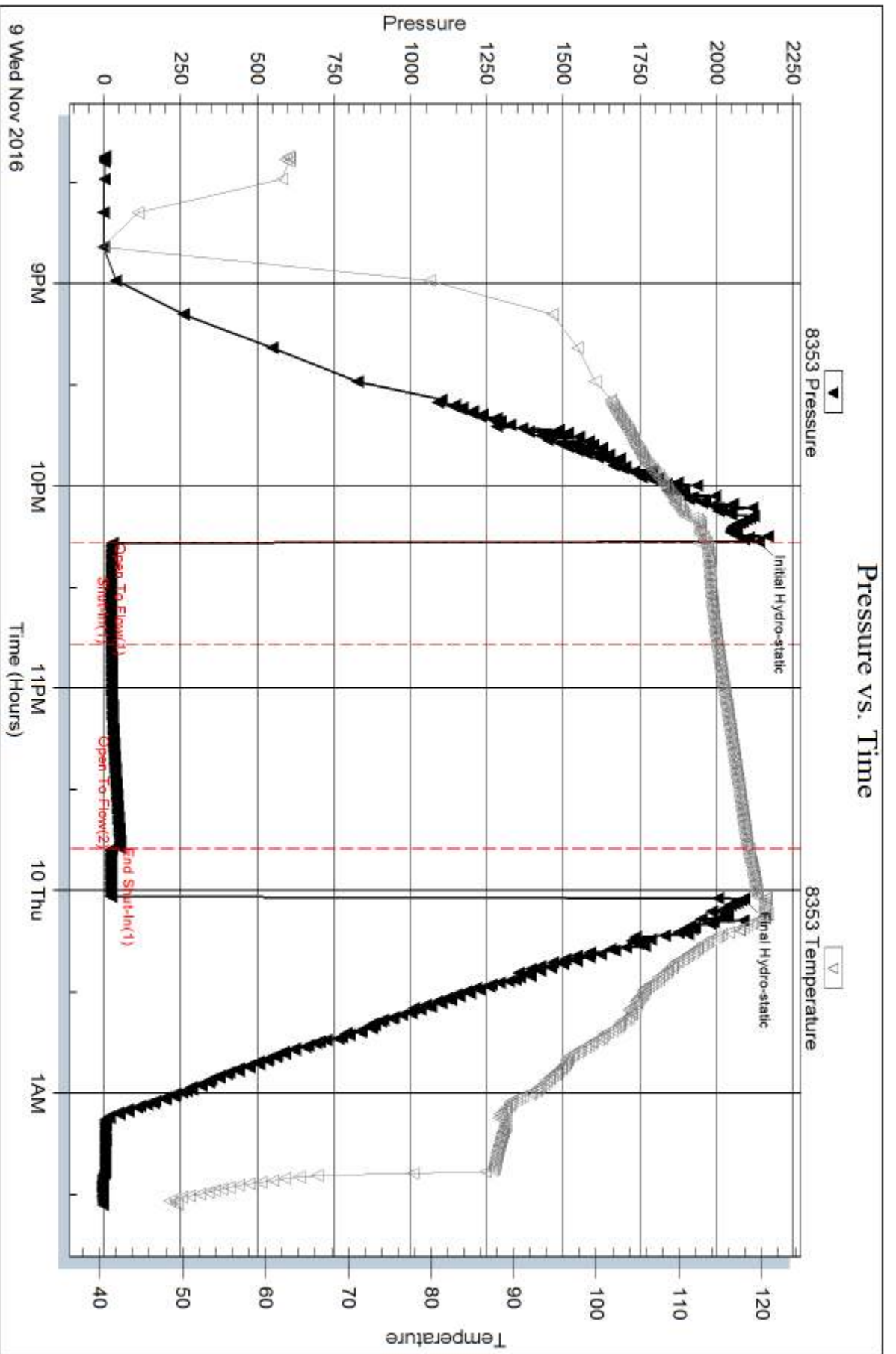
Recovery

Length (ft)	Description	Volume (bbl)
3.00	Mud 100% M	0.04

Gas Rates

Choke (inches)	Pressure (psig)	Gas Rate (Mcf/d)

* Recovery from multiple tests

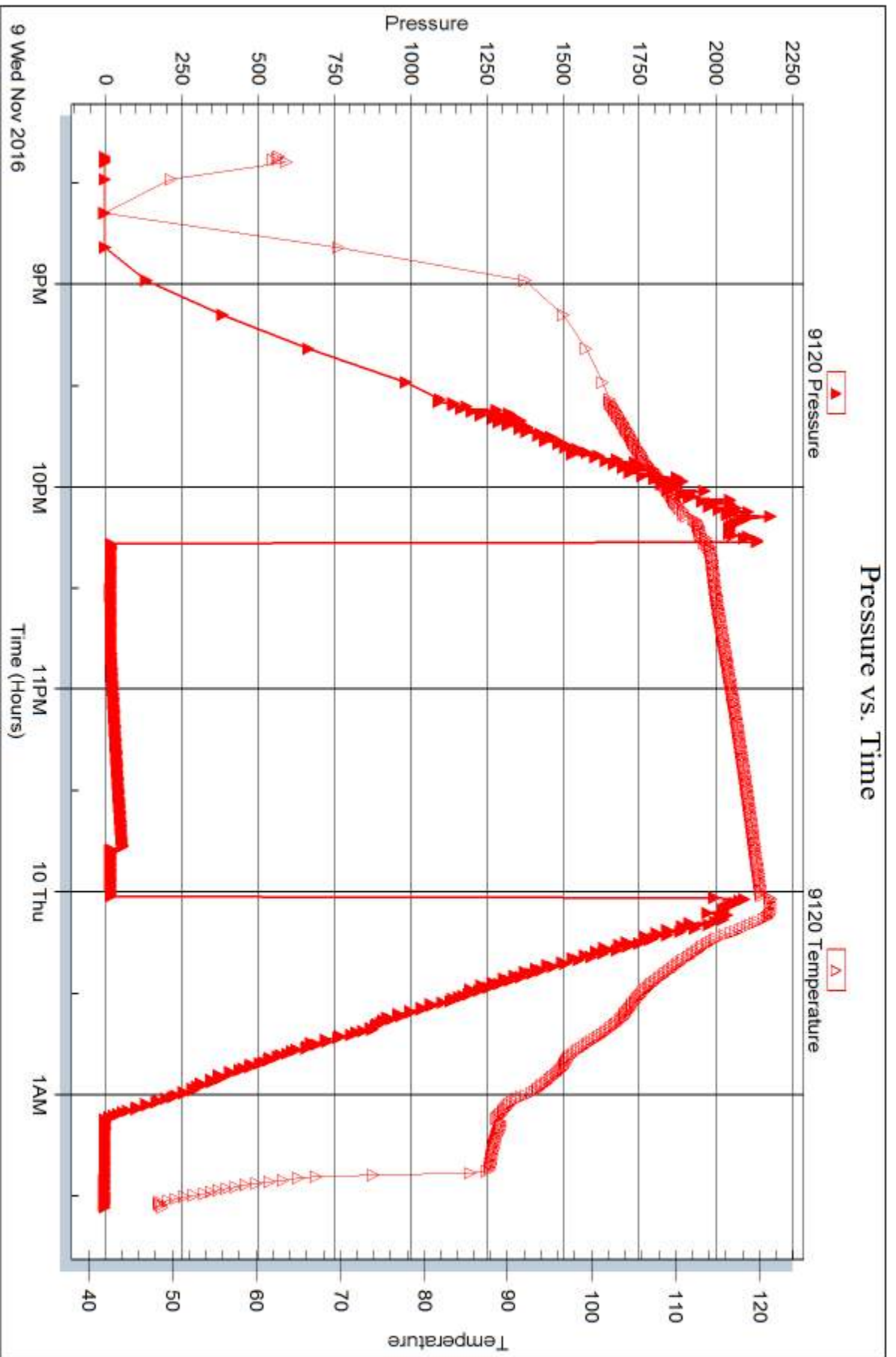


Serial #: 9120

Outside Pickett Drilling Co. Inc.

Albin T#3

DST Test Number: 3



Triobite Testing, Inc

Ref. No: 63495

Printed: 2016.11.10 @ 06:01:48