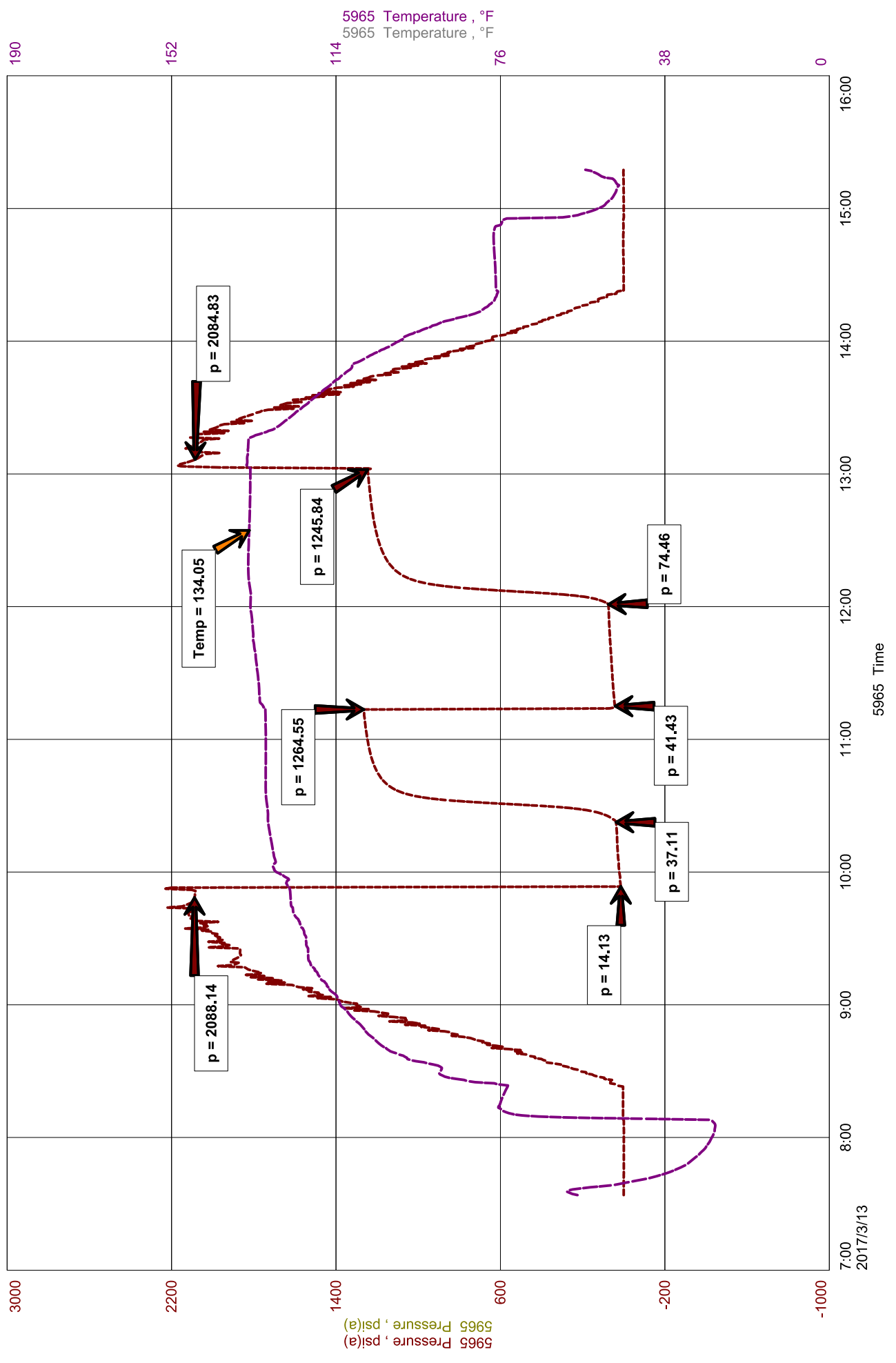


Deeds 1-15 DST 1





Diamond Testing General Report

Wil Steinbeck
TESTER
CELL: 620-282-9067

General Information

Company Name	LD Drilling	Job Number	W273
Contact	Kim Shoemaker	Representative	Wilbur Steinbeck
Well Name	Deeds 1-15	Well Operator	LD
Unique Well ID		Report Date	2017/03/13
Surface Location	S15/5S/37WCheyenne/Kan	Prepared By	Wilbur Steinbeck
Field	Wildcat	Qualified By	Kim Shoemaker

Test Information

Test Type	DST Conventional
Formation	LKC 120'-180'
Well Fluid Type	
Test Purpose	

Start Test Date	2017/03/13	Start Test Time	07:34:00
Final Test Date	2017/03/13	Final Test Time	15:18:00

Test Recovery

RECOVERY: 15' Gassy Free Oil
135' GOCM 20%G 25%O 55%M
150' Total Fluid
510' GIP

Tool Sample=GOCM 15%G 30%O 55%M

Corrected Gravity=32.0



DIAMOND TESTING
P.O. Box 157
HOISINGTON, KANSAS 67544
(800) 542-7313
DRILL-STEM TEST TICKET
FILE: Deeds 1-15 DST 1

TIME ON: 7:34
TIME OFF: 15:18

Company LD Drilling Lease & Well No. Deeds 1-15
Contractor LD Charge to LD Drilling
Elevation 3400 KB Formation LKC 120'-180' Effective Pay _____ Ft. Ticket No. W273
Date 3/13/17 Sec. 15 Twp. _____ 5 S Range _____ 37 W County Cheyenne State KANSAS
Test Approved By Kim Shoemaker Diamond Representative WIL STEINBECK

Formation Test No. 1 Interval Tested from 4376 ft. to 4460 ft. Total Depth 4460 ft.
Packer Depth 4371 ft. Size 6 3/4 in. Packer depth _____ ft. Size 6 3/4 in.
Packer Depth 4376 ft. Size 6 3/4 in. Packer depth _____ ft. Size 6 3/4 in.

Depth of Selective Zone Set _____

Top Recorder Depth (Inside) 4362 ft. Recorder Number 5965 Cap. 5000 P.S.I.
Bottom Recorder Depth (Outside) 4377 ft. Recorder Number 5587 Cap. 5000 P.S.I.
Below Straddle Recorder Depth _____ ft. Recorder Number _____ Cap. _____ P.S.I.

Mud Type CHEMICAL Viscosity 56 Drill Collar Length 0 ft. I.D. 2 1/4 in.
Weight 9.2 Water Loss 10.4 cc. Weight Pipe Length 0 ft. I.D. 2 7/8 in.
Chlorides 2500 P.P.M. Drill Pipe Length 4343 ft. I.D. 3 1/2 in.
Jars: Make STERLING Serial Number J&J Test Tool Length 33 ft. Tool Size 3 1/2-IF in.
Did Well Flow? yes Reversed Out NO Anchor Length 84 ft. Size 4 1/2-FH in.
Main Hole Size 7 7/8 Tool Joint Size 4 1/2 XH in. Surface Choke Size 1 in. Bottom Choke Size 5/8 in.

Blow: 1st Open: BOB in 27 min No Return
2nd Open: BOB in 20 min No Return

Recovered 15 ft. of Gassy Free Oil
Recovered 135 ft. of GOCM 20%G 25%O 55%M
Recovered 150 ft. of Total Fluid
Recovered 510 ft. of GIP

Recovered _____ ft. of _____	Price Job
Recovered _____ ft. of _____	Other Charges
Remarks: <u>Tool Sample= GMCO 15%G 30%O 55%M</u>	Insurance
Corrected Gravity= <u>32.0</u>	Total

Time Set Packer(s) 9:53 A.M. P.M. Time Started Off Bottom 12:53 A.M. P.M. Maximum Temperature 134

Initial Hydrostatic Pressure..... (A) 2088 P.S.I.
Initial Flow Period..... Minutes 30 (B) 14 P.S.I. to (C) 37 P.S.I.
Initial Closed In Period..... Minutes 45 (D) 1265 P.S.I.
Final Flow Period..... Minutes 45 (E) 41 P.S.I. to (F) 74 P.S.I.
Final Closed In Period..... Minutes 60 (G) 1246 P.S.I.
Final Hydrostatic Pressure..... (H) 2085 P.S.I.

Diamond Testing shall not be liable for damages of any kind to the property or personnel of the one for whom a test is made or for any loss suffered or sustained, directly or indirectly, through the use of its equipment, or its statement or opinion concerning the result of any test. Tools lost or damaged in the hole shall be paid for at cost by the party for whom the test is made.