



**TRILOBITE TESTING, INC.**

# DRILL STEM TEST REPORT

ProductionDrilling, Inc.  
 1023 Reservation Rd.  
 Hays, KS 67601  
 ATTN: Adam Folk

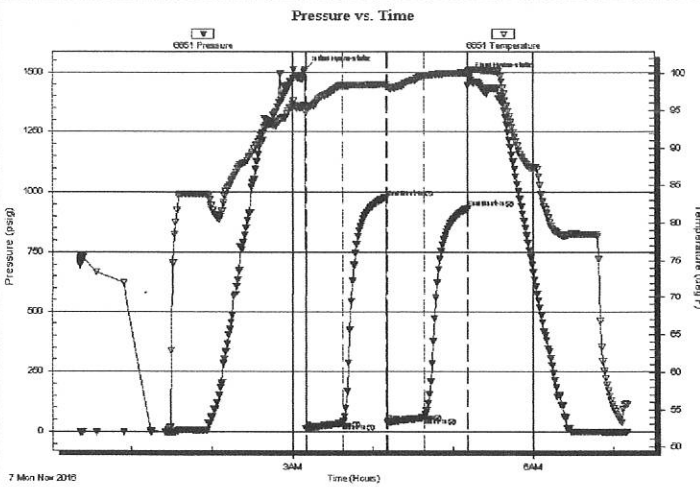
**32-18S-13W Barton, KS**  
**Roxie #1**  
 Job Ticket: 58203      **DST#: 1**  
 Test Start: 2016.11.07 @ 00:21:36

**GENERAL INFORMATION:**

Formation: **Lansing**  
 Deviated: No Whipstock: ft (KB)  
 Test Type: Conventional Bottom Hole (Initial)  
 Time Tool Opened: 03:10:06  
 Tester: Brannan Lonsdale  
 Time Test Ended: 07:10:36  
 Unit No: 73  
 Interval: **3139.00 ft (KB) To 3222.00 ft (KB) (TVD)**  
 Reference Elevations: 1887.00 ft (KB)  
 Total Depth: 3222.00 ft (KB) (TVD)  
 1879.00 ft (CF)  
 Hole Diameter: 7.88 inches Hole Condition: Fair  
 KB to GR/CF: 8.00 ft

**Serial #: 6651 Inside**  
 Press@RunDepth: 57.75 psig @ 3140.00 ft (KB) Capacity: 8000.00 psig  
 Start Date: 2016.11.07 End Date: 2016.11.07 Last Calib.: 2016.11.07  
 Start Time: 00:21:36 End Time: 07:10:36 Time On Btm: 2016.11.07 @ 03:09:36  
 Time Off Btm: 2016.11.07 @ 05:11:36

TEST COMMENT: 30- IF- Slow ly built to .5"  
 30- IS- No blow  
 30- FF- Slow ly built to 1"  
 30- FS- No blow



PRESSURE SUMMARY			
Time (Min.)	Pressure (psig)	Temp (deg F)	Annotation
0	1511.86	95.57	Initial Hydro-static
1	11.75	94.77	Open To Flow (1)
28	34.54	98.33	Shut-In(1)
61	977.29	98.50	End Shut-In(1)
62	38.20	98.11	Open To Flow (2)
89	57.75	99.67	Shut-In(2)
121	932.42	100.08	End Shut-In(2)
122	1485.14	100.33	Final Hydro-static

Recovery		
Length (ft)	Description	Volume (bbl)
90.00	Mw / show of oil in tool	0.66

Gas Rates			
	Choke (inches)	Pressure (psig)	Gas Rate (Mcf/d)

Serial #: 6651

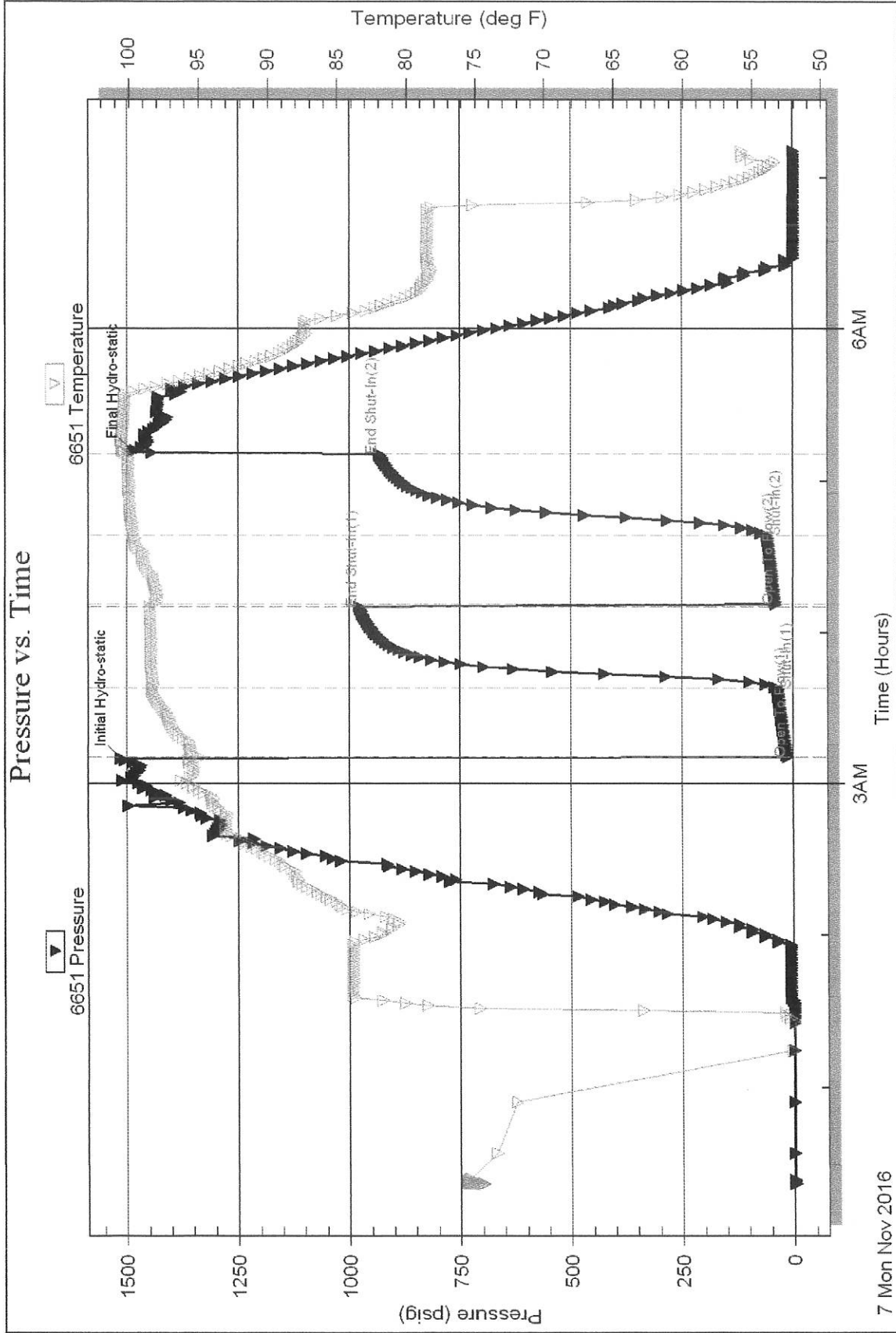
Inside

ProductionDrilling, Inc.

Roxie #1

DST Test Number: 1

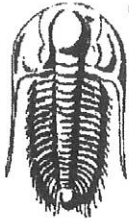
### Pressure vs. Time



Trilobite Testing, Inc

Ref. No: 58203

Printed: 2016.11.07 @ 07:18:03



**TRILOBITE  
TESTING, INC.**

# DRILL STEM TEST REPORT

ProductionDrilling, Inc.  
1023 Reservation Rd.  
Hays, KS 67601  
ATTN: Adam Folk

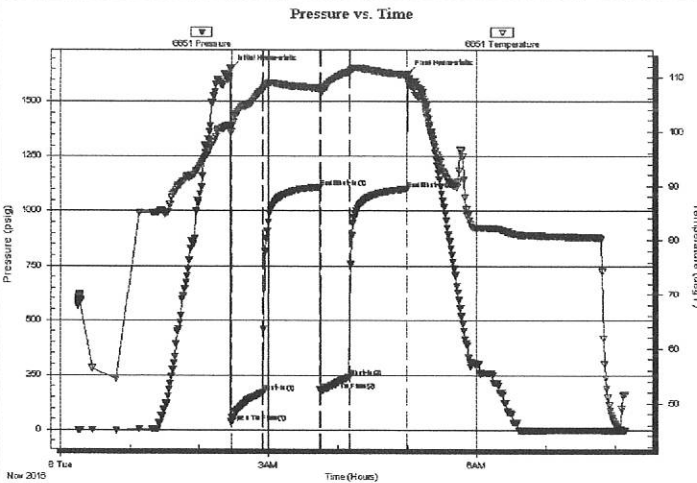
**32-18S-13W Barton, KS**  
**Roxie #1**  
Job Ticket: 58204      **DST#: 2**  
Test Start: 2016.11.08 @ 00:15:09

## GENERAL INFORMATION:

Formation: **Arbuckle**  
Deviated: No      Whipstock:      ft (KB)  
Time Tool Opened: 02:27:39  
Time Test Ended: 08:08:39  
Test Type: Conventional Bottom Hole (Reset)  
Tester: Brannan Lonsdale  
Unit No: 73  
Interval: **3365.00 ft (KB) To 3412.00 ft (KB) (TVD)**  
Total Depth: 3412.00 ft (KB) (TVD)  
Reference Elevations: 1887.00 ft (KB)  
Hole Diameter: 7.88 inches      Hole Condition: Fair      KB to GR/CF: 8.00 ft  
1879.00 ft (CF)

**Serial #: 6651      Inside**  
Press@RunDepth: 241.30 psig @ 3366.00 ft (KB)      Capacity: 8000.00 psig  
Start Date: 2016.11.08      End Date: 2016.11.08      Last Calib.: 2016.11.08  
Start Time: 00:15:09      End Time: 08:08:39      Time On Btm: 2016.11.08 @ 02:27:09  
Time Off Btm: 2016.11.08 @ 05:03:39

TEST COMMENT: 30- IF- BOB 8mins  
45- IS- .5" blow  
30- FF- BOB 7mins  
45- FS- .5" blow



## PRESSURE SUMMARY

Time (Min.)	Pressure (psig)	Temp (deg F)	Annotation
0	1650.13	100.91	Initial Hydro-static
1	35.82	99.92	Open To Flow (1)
28	170.64	107.65	Shut-In(1)
77	1110.35	108.03	End Shut-In(1)
78	179.74	107.31	Open To Flow (2)
103	241.30	111.01	Shut-In(2)
153	1101.48	110.52	End Shut-In(2)
154	1629.77	109.51	Final Hydro-static

## Recovery

Length (ft)	Description	Volume (bbl)
312.00	HOCM, 40%O 60%M	2.29
286.00	GSMCO, 15%G 5%M 80%O	4.05

\* Recovery from multiple tests

## Gas Rates

Choke (inches)	Pressure (psig)	Gas Rate (Mcf/d)

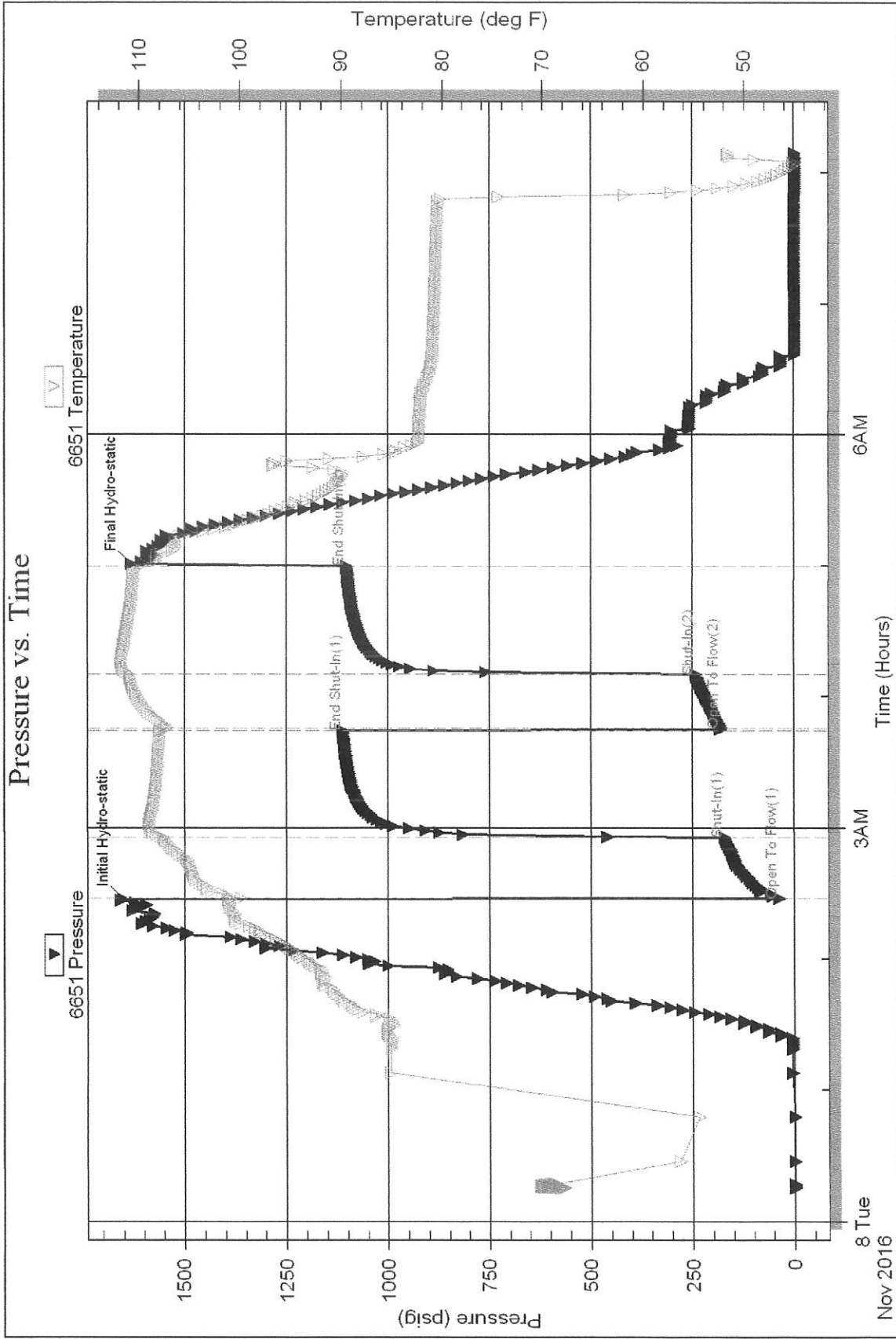
Serial #: 6651

Inside

Production Drilling, Inc.

Roxie #1

DST Test Number: 2



8 Tue  
Nov 2016

Trilobite Testing, Inc

Ref. No: 58204

Printed: 2016.11.08 @ 08:17:44