



TRILOBITE TESTING, INC.

DRILL STEM TEST REPORT

Shakespeare Oil Co

26-16-34 Scott, Ks

202 W Main st
Salem, IL 62881

Carson 2-26

Job Ticket: 63778

DST#: 2

ATTN: Tim Priest

Test Start: 2017.03.27 @ 14:54:24

GENERAL INFORMATION:

Formation: **Altamont C**

Deviated: No Whipstock: ft (KB)

Time Tool Opened: 16:42:54

Time Test Ended: 20:43:24

Test Type: Conventional Bottom Hole (Reset)

Tester: Brandon Turley

Unit No: 79

Interval: 4497.00 ft (KB) To 4539.00 ft (KB) (TVD)

Reference Elevations: 3120.00 ft (KB)

Total Depth: 4530.00 ft (KB) (TVD)

3112.00 ft (CF)

Hole Diameter: 7.88 inches Hole Condition: Good

KB to GR/CF: 8.00 ft

Serial #: 8166 Outside

Press@RunDepth: 11.67 psig @ 4502.00 ft (KB)

Capacity: 8000.00 psig

Start Date: 2017.03.27

End Date:

2017.03.27

Last Calib.:

2017.03.27

Start Time: 14:54:29

End Time:

20:43:23

Time On Btm:

2017.03.27 @ 16:41:54

Time Off Btm:

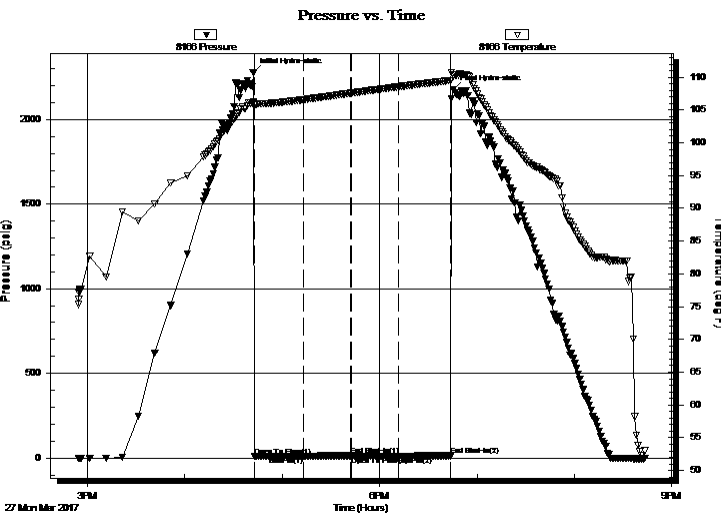
2017.03.27 @ 18:45:24

TEST COMMENT: IF: Surface blow died in 5 min.

IS: No return.

FF: No blow.

FS: No return.



PRESSURE SUMMARY

Time (Min.)	Pressure (psig)	Temp (deg F)	Annotation
0	2278.05	106.08	Initial Hydro-static
1	11.38	105.79	Open To Flow (1)
31	11.08	106.56	Shut-In(1)
60	13.83	107.56	End Shut-In(1)
61	11.76	107.57	Open To Flow (2)
90	11.67	108.55	Shut-In(2)
122	13.46	109.51	End Shut-In(2)
124	2176.90	110.33	Final Hydro-static

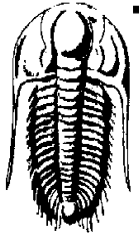
Recovery

Length (ft)	Description	Volume (bbl)
1.00	mud 100% m	0.01

* Recovery from multiple tests

Gas Rates

Choke (inches)	Pressure (psig)	Gas Rate (Mcf/d)



TRILOBITE
TESTING, INC.

DRILL STEM TEST REPORT

Shakespeare Oil Co

202 W Main st
Salem, IL 62881

ATTN: Tim Priest

26-16-34 Scott, Ks

Carson 2-26

Job Ticket: 63778

DST#: 2

Test Start: 2017.03.27 @ 14:54:24

GENERAL INFORMATION:

Formation: **Altamont C**

Deviated: No Whipstock: ft (KB)

Time Tool Opened: 16:42:54

Time Test Ended: 20:43:24

Test Type: Conventional Bottom Hole (Reset)

Tester: Brandon Turley

Unit No: 79

Interval: 4497.00 ft (KB) To 4539.00 ft (KB) (TVD)

Reference Elevations: 3120.00 ft (KB)

Total Depth: 4530.00 ft (KB) (TVD)

3112.00 ft (CF)

Hole Diameter: 7.88 inches Hole Condition: Good

KB to GR/CF: 8.00 ft

Serial #: 8875 Inside

Press@RunDepth: psig @ 4502.00 ft (KB)

Capacity: 8000.00 psig

Start Date: 2017.03.27

End Date:

2017.03.27

Last Calib.:

2017.03.27

Start Time: 14:54:07

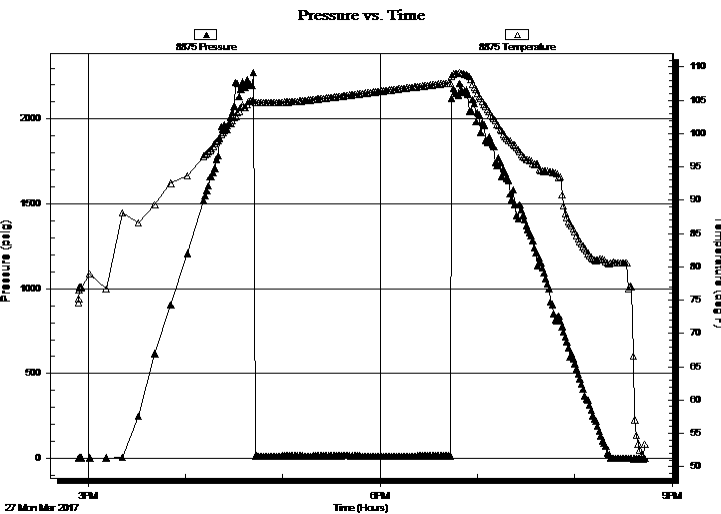
End Time:

20:43:01

Time On Btm:

Time Off Btm:

TEST COMMENT: IF: Surface blow died in 5 min.
IS: No return.
FF: No blow.
FS: No return.



PRESSURE SUMMARY

Time (Min.)	Pressure (psig)	Temp (deg F)	Annotation

Recovery

Length (ft)	Description	Volume (bbl)
1.00	mud 100% _m	0.01

Gas Rates

	Choke (inches)	Pressure (psig)	Gas Rate (Mcf/d)

* Recovery from multiple tests



TRILOBITE
TESTING, INC.

DRILL STEM TEST REPORT

FLUID SUMMARY

Shakespeare Oil Co

26-16-34 Scott, Ks

202 W Main st
Salem, IL 62881

Carson 2-26

Job Ticket: 63778

DST#: 2

ATTN: Tim Priest

Test Start: 2017.03.27 @ 14:54:24

Mud and Cushion Information

Mud Type: Gel Chem

Cushion Type:

Oil API:

0 deg API

Mud Weight: 9.00 lb/gal

Cushion Length:

ft

Water Salinity:

0 ppm

Viscosity: 55.00 sec/qt

Cushion Volume:

bbbl

Water Loss: 8.79 in³

Gas Cushion Type:

Resistivity: 0.00 ohm.m

Gas Cushion Pressure:

psig

Salinity: 5600.00 ppm

Filter Cake: 1.00 inches

Recovery Information

Recovery Table

Length ft	Description	Volume bbl
1.00	mud 100%m	0.014

Total Length: 1.00 ft Total Volume: 0.014 bbl

Num Fluid Samples: 0

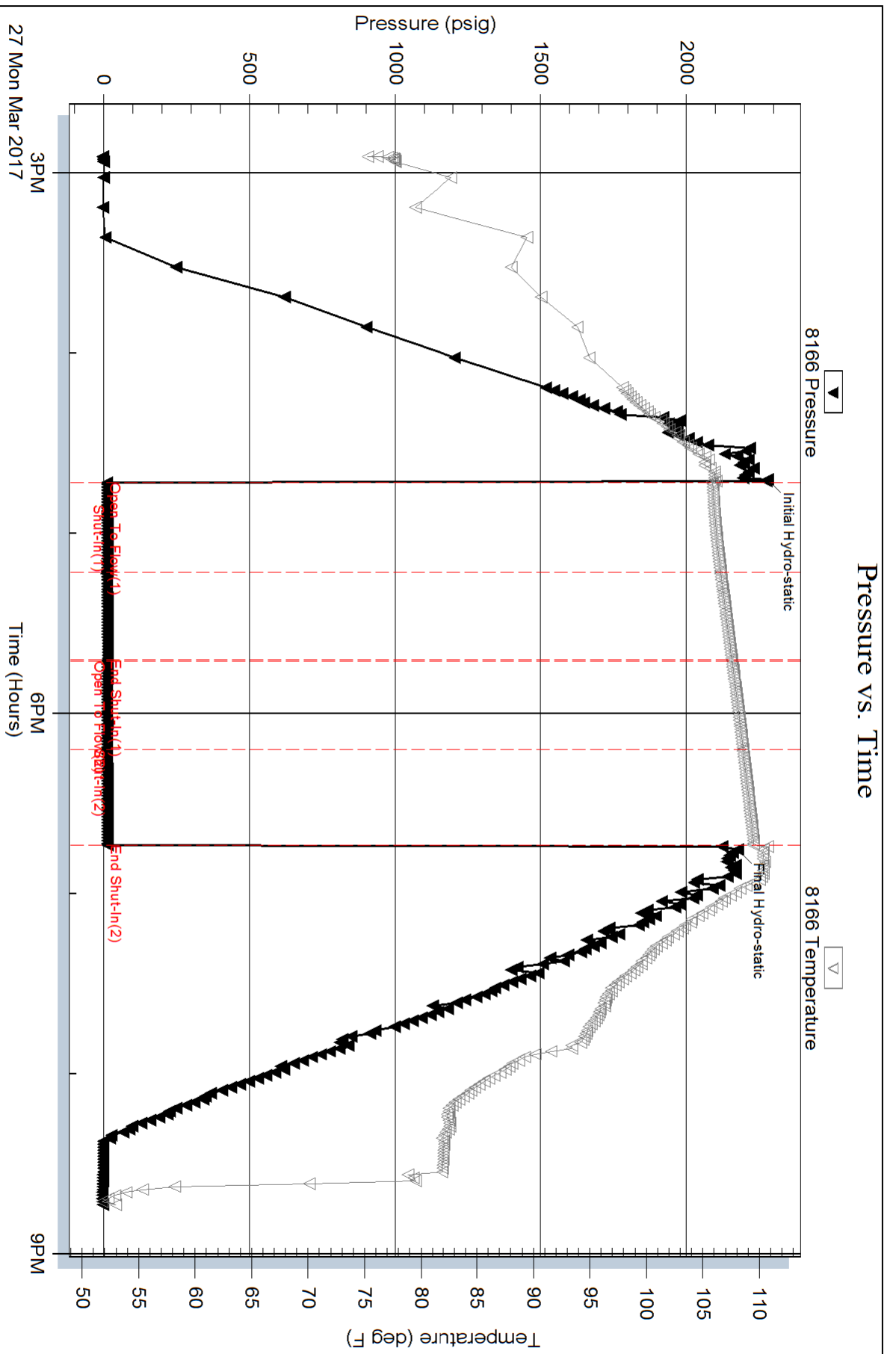
Num Gas Bombs: 0

Serial #:

Laboratory Name:

Laboratory Location:

Recovery Comments:



Serial #: 8875

Inside

Shakespeare Oil Co

Carson 2-26

DST Test Number: 2

