



## DRILL STEM TEST REPORT

Prepared For: **Blackstone Oil & Gas (Kansas) LLC**

1301 McKinney Street  
Suite 2875  
Houston, TX 77010+3031

ATTN: Roger Fisher

### **Ithaca #1-17**

### **17-18S-16W Rush,KS**

Start Date: 2016.11.11 @ 04:42:00

End Date: 2016.11.11 @ 10:29:00

Job Ticket #: 63677                      DST #: 1

Trilobite Testing, Inc  
PO Box 362 Hays, KS 67601  
ph: 785-625-4778 fax: 785-625-5620

Printed: 2016.11.15 @ 10:20:35



**TRILOBITE  
TESTING, INC**

# DRILL STEM TEST REPORT

Blackstone Oil & Gas (Kansas) LLC

**17-18S-16W Rush,KS**

1301 McKinney Street  
Suite 2875  
Houston, TX 77010+3031  
ATTN: Roger Fisher

**Ithaca #1-17**

Job Ticket: 63677

**DST#: 1**

Test Start: 2016.11.11 @ 04:42:00

## GENERAL INFORMATION:

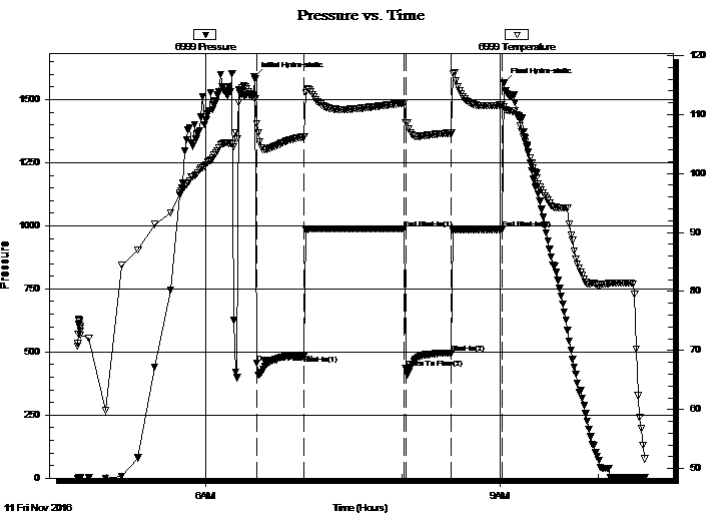
Formation: **LKC C**  
 Deviated: No Whipstock: ft (KB)  
 Time Tool Opened: 06:31:30  
 Time Test Ended: 10:29:00  
 Interval: **3195.00 ft (KB) To 3212.00 ft (KB) (TVD)**  
 Total Depth: 3212.00 ft (KB) (TVD)  
 Hole Diameter: 7.88 inches Hole Condition: Fair  
 Test Type: Conventional Bottom Hole (Initial)  
 Tester: Ken Swinney  
 Unit No: 72  
 Reference Elevations: 1939.00 ft (KB)  
 1933.00 ft (CF)  
 KB to GR/CF: 6.00 ft

## Serial #: 6999

Inside

Press@RunDepth: 496.31 psig @ 3208.00 ft (KB) Capacity: 8000.00 psig  
 Start Date: 2016.11.11 End Date: 2016.11.11 Last Calib.: 2016.11.11  
 Start Time: 04:42:05 End Time: 10:28:59 Time On Btm: 2016.11.11 @ 06:30:00  
 Time Off Btm: 2016.11.11 @ 09:02:30

TEST COMMENT: I.F. 30 minutes Blow built to BOB in 10 Sec/ Gas to surface in 30 sec  
 I.S.I 60 minutes No blow back  
 F.F. 30 minutes Blow built to BOB in 5 Sec  
 F.S.I.30 minutes No blow back



## PRESSURE SUMMARY

Time (Min.)	Pressure (psig)	Temp (deg F)	Annotation
0	1592.67	112.64	Initial Hydro-static
2	455.67	108.42	Open To Flow (1)
31	485.75	106.18	Shut-In(1)
92	988.98	111.94	End Shut-In(1)
93	435.60	108.63	Open To Flow (2)
120	496.31	106.86	Shut-In(2)
152	986.37	111.62	End Shut-In(2)
153	1565.85	111.35	Final Hydro-static

## Recovery

Length (ft)	Description	Volume (bbl)
70.00	Mud 100%	0.98

## Gas Rates

	Choke (inches)	Pressure (psig)	Gas Rate (Mcf/d)
First Gas Rate	1.00	70.00	2426.40
Last Gas Rate	1.00	74.00	2541.39
Max. Gas Rate	1.00	74.00	2541.39



**TRILOBITE  
TESTING, INC**

# DRILL STEM TEST REPORT

Blackstone Oil & Gas (Kansas) LLC

**17-18S-16W Rush,KS**

1301 McKinney Street  
Suite 2875  
Houston, TX 77010+3031  
ATTN: Roger Fisher

**Ithaca #1-17**

Job Ticket: 63677

**DST#: 1**

Test Start: 2016.11.11 @ 04:42:00

## GENERAL INFORMATION:

Formation: **LKC C**

Deviated: No Whipstock: ft (KB)

Time Tool Opened: 06:31:30

Time Test Ended: 10:29:00

Test Type: Conventional Bottom Hole (Initial)

Tester: Ken Swinney

Unit No: 72

**Interval: 3195.00 ft (KB) To 3212.00 ft (KB) (TVD)**

Reference Elevations: 1939.00 ft (KB)

Total Depth: 3212.00 ft (KB) (TVD)

1933.00 ft (CF)

Hole Diameter: 7.88 inches Hole Condition: Fair

KB to GR/CF: 6.00 ft

**Serial #: 8960 Outside**

Press@RunDepth: 983.90 psig @ 3209.00 ft (KB)

Capacity: 8000.00 psig

Start Date: 2016.11.11

End Date:

2016.11.11

Last Calib.:

2016.11.11

Start Time: 04:42:05

End Time:

10:28:59

Time On Btm:

2016.11.11 @ 06:30:30

Time Off Btm:

2016.11.11 @ 09:02:30

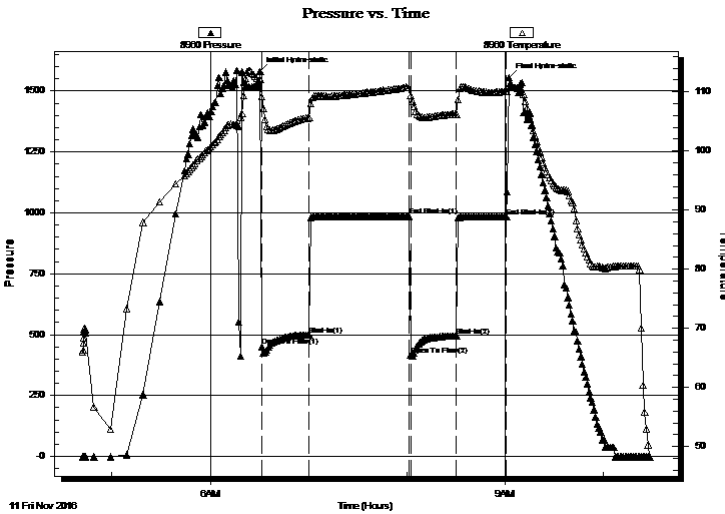
**TEST COMMENT:** I.F. 30 minutes Blow built to BOB in 10 Sec/ Gas to surface in 30 sec

I.S.I 60 minutes No blow back

F.F. 30 minutes Blow built to BOB in 5 Sec

F.S.I.30 minutes No blow back

## PRESSURE SUMMARY



Time (Min.)	Pressure (psig)	Temp (deg F)	Annotation
0	1580.61	112.08	Initial Hydro-static
1	451.48	109.13	Open To Flow (1)
30	497.43	105.58	Shut-In(1)
91	986.38	110.75	End Shut-In(1)
92	417.15	109.38	Open To Flow (2)
120	494.97	106.23	Shut-In(2)
151	983.90	110.03	End Shut-In(2)
152	1554.85	111.07	Final Hydro-static

## Recovery

Length (ft)	Description	Volume (bbl)
70.00	Mud 100%	0.98

## Gas Rates

	Choke (inches)	Pressure (psig)	Gas Rate (Mcf/d)
First Gas Rate	1.00	70.00	2426.40
Last Gas Rate	1.00	74.00	2541.39
Max. Gas Rate	1.00	74.00	2541.39



**TRILOBITE  
TESTING, INC**

# DRILL STEM TEST REPORT

**TOOL DIAGRAM**

Blackstone Oil & Gas (Kansas) LLC

**17-18S-16W Rush,KS**

1301 McKinney Street  
Suite 2875  
Houston, TX 77010+3031  
ATTN: Roger Fisher

**Ithaca #1-17**

Job Ticket: 63677

**DST#: 1**

Test Start: 2016.11.11 @ 04:42:00

## Tool Information

Drill Pipe:	Length: 3205.00 ft	Diameter: 3.80 inches	Volume: 44.96 bbl	Tool Weight: 2000.00 lb
Heavy Wt. Pipe:	Length: 0.00 ft	Diameter: 0.00 inches	Volume: 0.00 bbl	Weight set on Packer: 20000.00 lb
Drill Collar:	Length: 0.00 ft	Diameter: 0.00 inches	Volume: 0.00 bbl	Weight to Pull Loose: 32000.00 lb
			<u>Total Volume: 44.96 bbl</u>	Tool Chased 0.00 ft
Drill Pipe Above KB:	30.00 ft			String Weight: Initial 28000.00 lb
Depth to Top Packer:	3195.00 ft			Final 28000.00 lb
Depth to Bottom Packer:	ft			
Interval between Packers:	17.00 ft			
Tool Length:	37.00 ft			
Number of Packers:	2	Diameter: 6.75 inches		

Tool Comments:

Tool Description	Length (ft)	Serial No.	Position	Depth (ft)	Accum. Lengths
------------------	-------------	------------	----------	------------	----------------

Shut-In Tool	5.00			3180.00	
Hydraulic tool	5.00			3185.00	
Top Packer	5.00			3190.00	
Packer	5.00			3195.00	20.00 Bottom Of Top Packer
Anchor	12.00			3207.00	
Recorder	1.00	6999	Inside	3208.00	
Recorder	1.00	8960	Outside	3209.00	
Bullnose	3.00			3212.00	17.00 Anchor Tool

**Total Tool Length: 37.00**



**TRILOBITE  
TESTING, INC**

# DRILL STEM TEST REPORT

**FLUID SUMMARY**

Blackstone Oil & Gas (Kansas) LLC

**17-18S-16W Rush,KS**

1301 McKinney Street  
Suite 2875  
Houston, TX 77010+3031  
ATTN: Roger Fisher

**Ithaca #1-17**

Job Ticket: 63677

**DST#: 1**

Test Start: 2016.11.11 @ 04:42:00

## Mud and Cushion Information

Mud Type: Gel Chem

Mud Weight: 9.00 lb/gal

Viscosity: 48.00 sec/qt

Water Loss: 9.17 in<sup>3</sup>

Resistivity: ohm.m

Salinity: 5000.00 ppm

Filter Cake: 1.00 inches

Cushion Type:

Cushion Length: ft

Cushion Volume: bbl

Gas Cushion Type:

Gas Cushion Pressure: psig

Oil API:

Water Salinity: deg API

ppm

## Recovery Information

Recovery Table

Length ft	Description	Volume bbl
70.00	Mud 100%	0.982

Total Length: 70.00 ft      Total Volume: 0.982 bbl

Num Fluid Samples: 0

Num Gas Bombs: 0

Serial #:

Laboratory Name:

Laboratory Location:

Recovery Comments:



**TRILOBITE  
TESTING, INC.**

## DRILL STEM TEST REPORT

**GAS RATES**

Blackstone Oil & Gas (Kansas) LLC

**17-18S-16W Rush,KS**

1301 McKinney Street  
Suite 2875  
Houston, TX 77010+3031  
ATTN: Roger Fisher

**Ithaca #1-17**

Job Ticket: 63677

**DST#: 1**

Test Start: 2016.11.11 @ 04:42:00

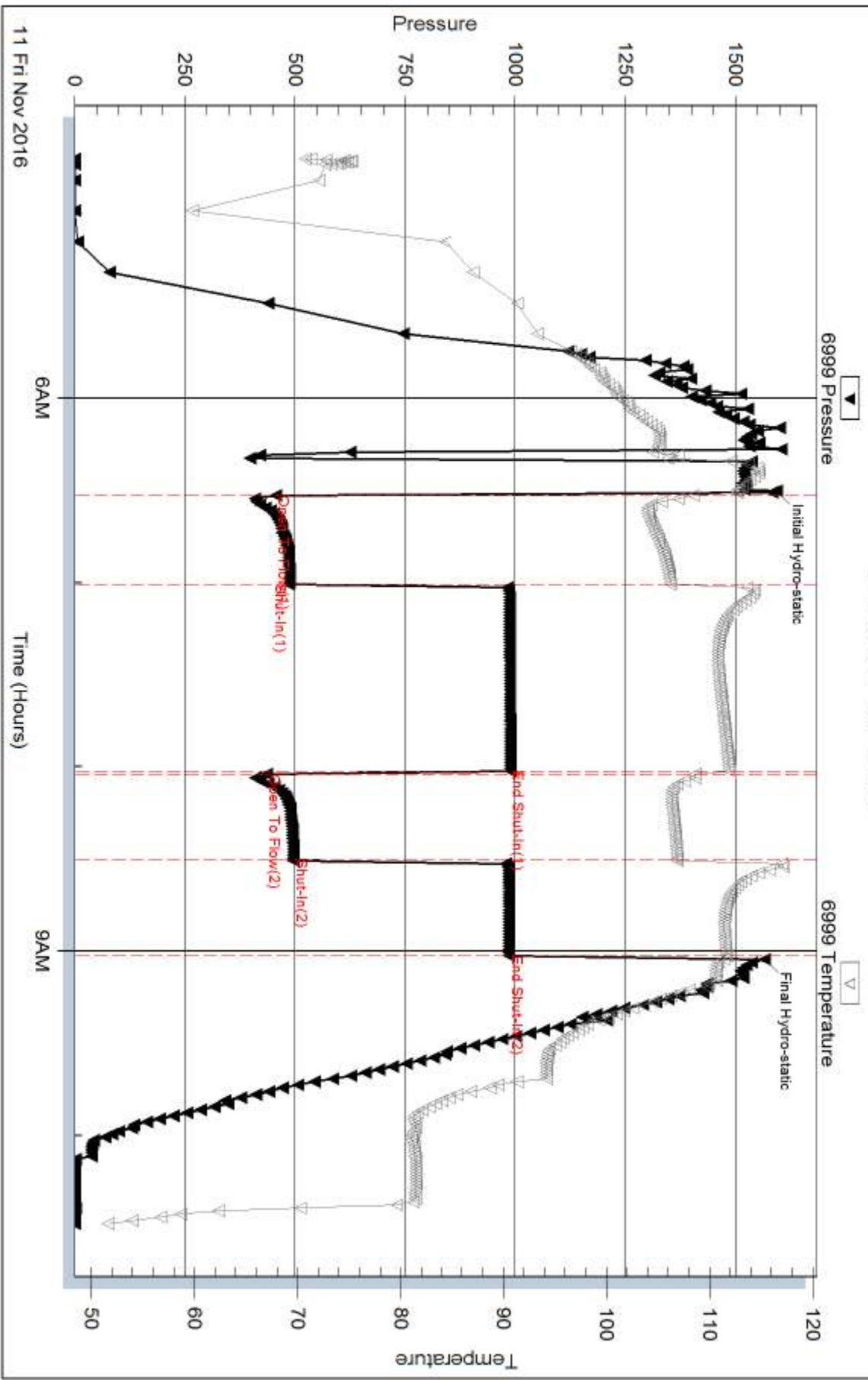
### Gas Rates Information

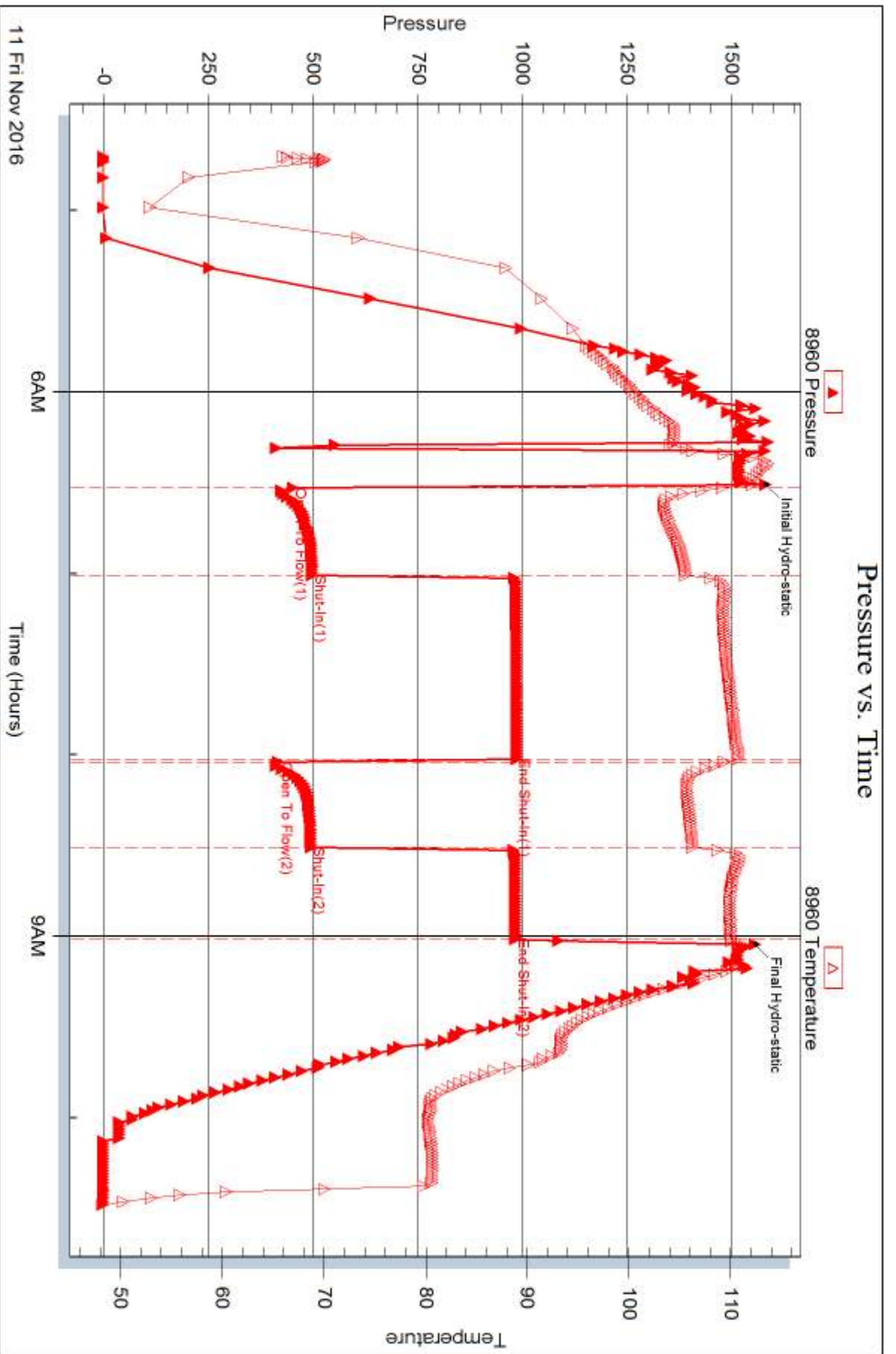
Temperature: 59 (deg F)  
Relative Density: 0.65  
Z Factor: 0.8

Gas Rates Table

Flow Period	Elapsed Time	Choke (inches)	Pressure (psig)	Gas Rate (Mcf/d)
2	10	1.00	70.00	2426.40
2	20	1.00	74.00	2541.39
2	30	1.00	74.00	2541.39

### Pressure vs. Time









## DRILL STEM TEST REPORT

Prepared For: **Blackstone Oil & Gas (Kansas) LLC**

1301 McKinney Street  
Suite 2875  
Houston, TX 77010+3031

ATTN: Roger Fisher

### **Ithaca #1-17**

### **17-18S-16W Rush,KS**

Start Date: 2016.11.11 @ 18:48:00

End Date: 2016.11.12 @ 00:50:30

Job Ticket #: 63678                      DST #: 2

Trilobite Testing, Inc  
PO Box 362 Hays, KS 67601  
ph: 785-625-4778 fax: 785-625-5620

Printed: 2016.11.15 @ 10:30:26



**TRILOBITE TESTING, INC.**

# DRILL STEM TEST REPORT

Blackstone Oil & Gas (Kansas) LLC

**17-18S-16W Rush,KS**

1301 McKinney Street  
Suite 2875  
Houston, TX 77010+3031  
ATTN: Roger Fisher

**Ithaca #1-17**

Job Ticket: 63678

**DST#: 2**

Test Start: 2016.11.11 @ 18:48:00

## GENERAL INFORMATION:

Formation: **LKC F**

Deviated: No Whipstock: ft (KB)

Time Tool Opened: 20:11:30

Time Test Ended: 00:50:30

Test Type: Conventional Bottom Hole (Initial)

Tester: Ken Swinney

Unit No: 72

**Interval: 3262.00 ft (KB) To 3270.00 ft (KB) (TVD)**

Reference Elevations: 1939.00 ft (KB)

Total Depth: 3270.00 ft (KB) (TVD)

1933.00 ft (CF)

Hole Diameter: 7.88 inches Hole Condition: Fair

KB to GR/CF: 6.00 ft

## Serial #: 6999

Inside

Press@RunDepth: 807.51 psig @ 3266.00 ft (KB)

Capacity: 8000.00 psig

Start Date: 2016.11.11

End Date: 2016.11.12

Last Calib.: 2016.11.12

Start Time: 18:48:05

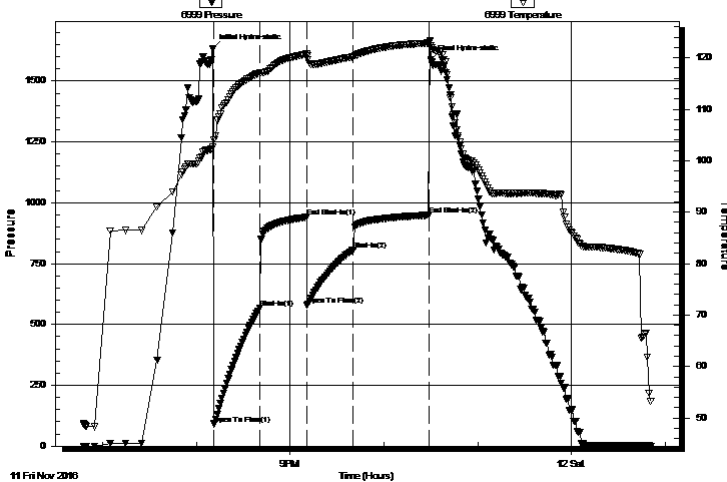
End Time: 00:50:29

Time On Btm: 2016.11.11 @ 20:10:30

Time Off Btm: 2016.11.11 @ 22:30:00

**TEST COMMENT:** I.F. 30 minutes Blow built to BOB in 1 minute 15 seconds  
I.S.I. 30 minutes Blow back built to 5 1/2 inches  
F.F. 30 minutes Blow built to BOB in 2 minutes 15 seconds  
F.S.I. 45 minutes Light surface blow back

Pressure vs. Time



## PRESSURE SUMMARY

Time (Min.)	Pressure (psig)	Temp (deg F)	Annotation
0	1632.41	102.62	Initial Hydro-static
1	91.19	104.04	Open To Flow (1)
30	566.71	117.10	Shut-In(1)
60	940.96	120.69	End Shut-In(1)
61	578.73	120.38	Open To Flow (2)
90	807.51	120.20	Shut-In(2)
138	948.98	122.83	End Shut-In(2)
140	1588.83	122.39	Final Hydro-static

## Recovery

Length (ft)	Description	Volume (bbl)
1612.00	GW Gas 10% Water 90%	22.61
10.00	Clean Oil 100%	0.14
0.00	114 Gas in pipe	0.00

## Gas Rates

	Choke (inches)	Pressure (psig)	Gas Rate (Mcf/d)



**TRILOBITE  
TESTING, INC**

# DRILL STEM TEST REPORT

Blackstone Oil & Gas (Kansas) LLC

**17-18S-16W Rush,KS**

1301 McKinney Street  
Suite 2875  
Houston, TX 77010+3031  
ATTN: Roger Fisher

**Ithaca #1-17**

Job Ticket: 63678

**DST#: 2**

Test Start: 2016.11.11 @ 18:48:00

## GENERAL INFORMATION:

Formation: **LKC F**

Deviated: No Whipstock: ft (KB)

Time Tool Opened: 20:11:30

Time Test Ended: 00:50:30

Test Type: Conventional Bottom Hole (Initial)

Tester: Ken Swinney

Unit No: 72

**Interval: 3262.00 ft (KB) To 3270.00 ft (KB) (TVD)**

Reference Elevations: 1939.00 ft (KB)

Total Depth: 3270.00 ft (KB) (TVD)

1933.00 ft (CF)

Hole Diameter: 7.88 inches Hole Condition: Fair

KB to GR/CF: 6.00 ft

**Serial #: 8960 Outside**

Press@RunDepth: 946.96 psig @ 3267.00 ft (KB)

Capacity: 8000.00 psig

Start Date: 2016.11.11

End Date: 2016.11.12

Last Calib.: 2016.11.12

Start Time: 18:48:05

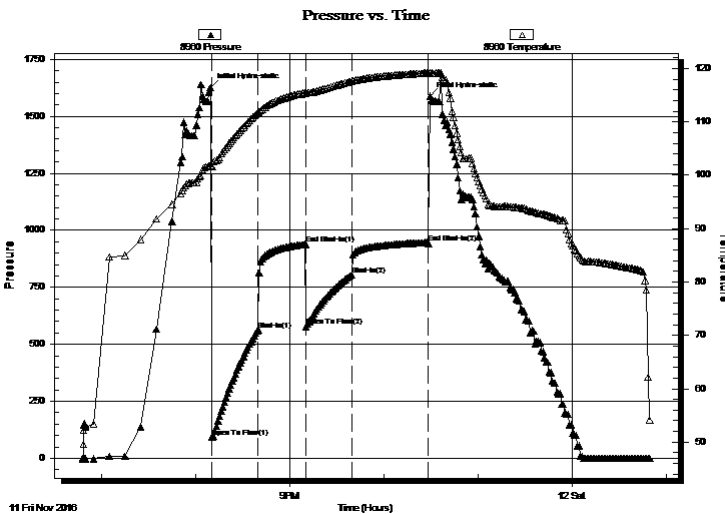
End Time: 00:49:59

Time On Btm: 2016.11.11 @ 20:09:30

Time Off Btm: 2016.11.11 @ 22:29:30

**TEST COMMENT:** I.F. 30 minutes Blow built to BOB in 1 minute 15 seconds  
I.S.I. 30 minutes Blow back built to 5 1/2 inches  
F.F. 30 minutes Blow built to BOB in 2 minutes 15 seconds  
F.S.I. 45 minutes Light surface blow back

## PRESSURE SUMMARY



Time (Min.)	Pressure (psig)	Temp (deg F)	Annotation
0	1626.11	101.88	Initial Hydro-static
1	92.44	101.59	Open To Flow (1)
31	564.76	111.70	Shut-In(1)
61	938.99	115.49	End Shut-In(1)
61	577.95	115.39	Open To Flow (2)
90	803.71	117.61	Shut-In(2)
139	946.96	119.19	End Shut-In(2)
140	1588.73	119.28	Final Hydro-static

## Recovery

Length (ft)	Description	Volume (bbl)
1612.00	GW Gas 10% Water 90%	22.61
10.00	Clean Oil 100%	0.14
0.00	114 Gas in pipe	0.00

## Gas Rates

	Choke (inches)	Pressure (psig)	Gas Rate (Mcf/d)



**TRILOBITE  
TESTING, INC**

# DRILL STEM TEST REPORT

**TOOL DIAGRAM**

Blackstone Oil & Gas (Kansas) LLC

**17-18S-16W Rush,KS**

1301 McKinney Street  
Suite 2875  
Houston, TX 77010+3031  
ATTN: Roger Fisher

**Ithaca #1-17**

Job Ticket: 63678

**DST#: 2**

Test Start: 2016.11.11 @ 18:48:00

## Tool Information

Drill Pipe:	Length: 3268.00 ft	Diameter: 3.80 inches	Volume: 45.84 bbl	Tool Weight: 2000.00 lb
Heavy Wt. Pipe:	Length: 0.00 ft	Diameter: 0.00 inches	Volume: 0.00 bbl	Weight set on Packer: 20000.00 lb
Drill Collar:	Length: 0.00 ft	Diameter: 0.00 inches	Volume: 0.00 bbl	Weight to Pull Loose: 34000.00 lb
			<u>Total Volume: 45.84 bbl</u>	Tool Chased 0.00 ft
Drill Pipe Above KB:	26.00 ft			String Weight: Initial 29000.00 lb
Depth to Top Packer:	3262.00 ft			Final 32000.00 lb
Depth to Bottom Packer:	ft			
Interval between Packers:	8.00 ft			
Tool Length:	28.00 ft			
Number of Packers:	2	Diameter: 6.75 inches		
Tool Comments:				

Tool Description	Length (ft)	Serial No.	Position	Depth (ft)	Accum. Lengths
------------------	-------------	------------	----------	------------	----------------

Shut-In Tool	5.00			3247.00	
Hydraulic tool	5.00			3252.00	
Top Packer	5.00			3257.00	
Packer	5.00			3262.00	20.00 Bottom Of Top Packer
Anchor	3.00			3265.00	
Recorder	1.00	6999	Inside	3266.00	
Recorder	1.00	8960	Outside	3267.00	
Bullnose	3.00			3270.00	8.00 Anchor Tool

**Total Tool Length: 28.00**



**TRILOBITE  
TESTING, INC**

# DRILL STEM TEST REPORT

**FLUID SUMMARY**

Blackstone Oil & Gas (Kansas) LLC

**17-18S-16W Rush,KS**

1301 McKinney Street  
Suite 2875  
Houston, TX 77010+3031  
ATTN: Roger Fisher

**Ithaca #1-17**

Job Ticket: 63678

**DST#: 2**

Test Start: 2016.11.11 @ 18:48:00

## Mud and Cushion Information

Mud Type: Gel Chem  
Mud Weight: 9.00 lb/gal  
Viscosity: 52.00 sec/qt  
Water Loss: 8.78 in<sup>3</sup>  
Resistivity: ohm.m  
Salinity: 5000.00 ppm  
Filter Cake: 1.00 inches

Cushion Type:  
Cushion Length: ft  
Cushion Volume: bbl  
Gas Cushion Type:  
Gas Cushion Pressure: psig

Oil API: deg API  
Water Salinity: 25000 ppm

## Recovery Information

Recovery Table

Length ft	Description	Volume bbl
1612.00	GW Gas 10% Water 90%	22.612
10.00	Clean Oil 100%	0.140
0.00	114 Gas in pipe	0.000

Total Length: 1622.00 ft      Total Volume: 22.752 bbl

Num Fluid Samples: 0

Num Gas Bombs: 0

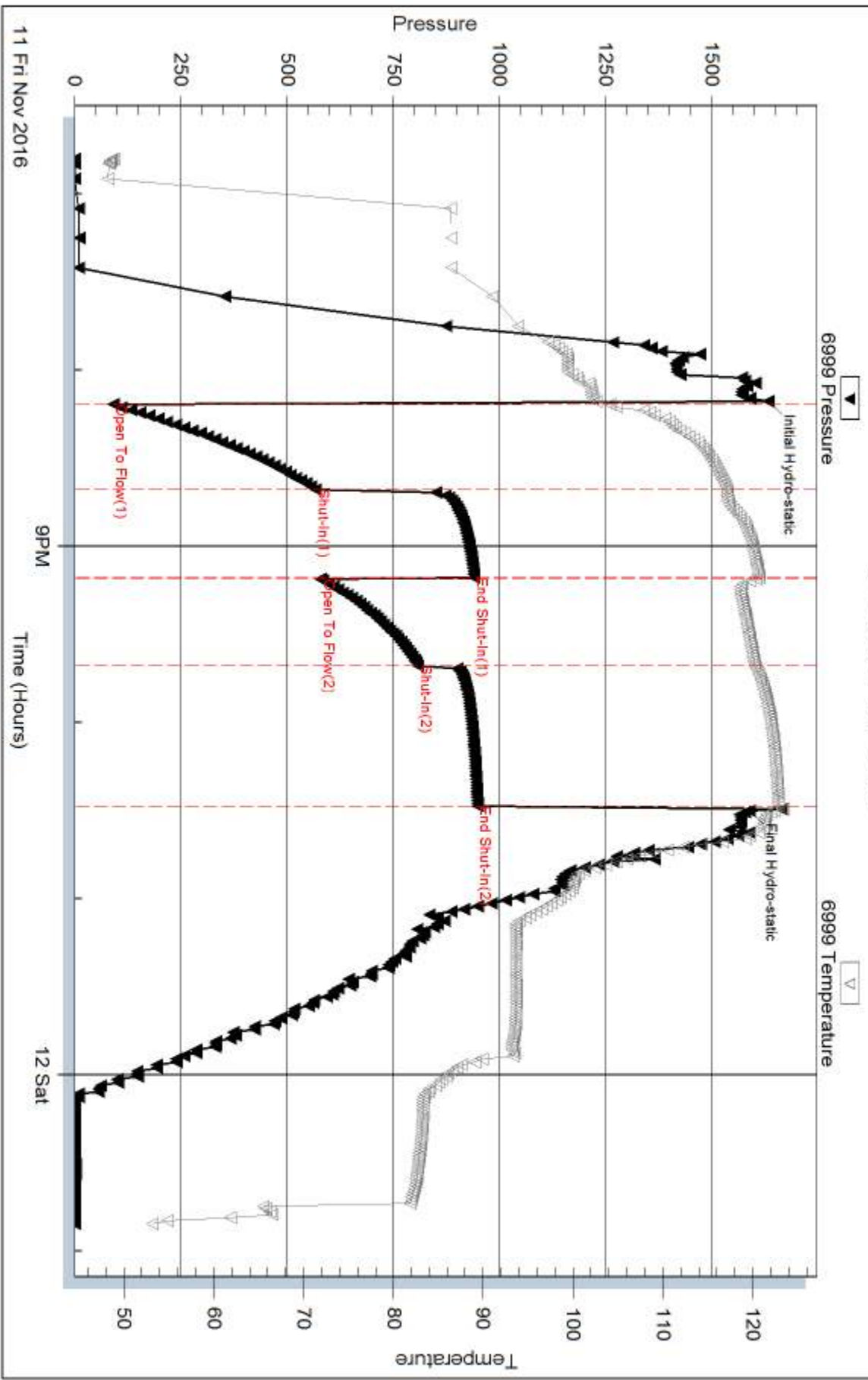
Serial #:

Laboratory Name:

Laboratory Location:

Recovery Comments: Recovery Resistivity .51 ohms @ 36 degrees

### Pressure vs. Time







## DRILL STEM TEST REPORT

Prepared For: **Blackstone Oil & Gas (Kansas) LLC**

1301 McKinney Street  
Suite 2875  
Houston, TX 77010+3031

ATTN: Roger Fisher

**Ithaca #1-17**

**17-18S-16W Rush,KS**

Start Date: 2016.11.12 @ 08:03:00

End Date: 2016.11.12 @ 13:56:30

Job Ticket #: 63679                      DST #: 3

Trilobite Testing, Inc  
PO Box 362 Hays, KS 67601  
ph: 785-625-4778 fax: 785-625-5620

Printed: 2016.11.15 @ 10:30:04





**TRILOBITE TESTING, INC**

# DRILL STEM TEST REPORT

Blackstone Oil & Gas (Kansas) LLC

**17-18S-16W Rush,KS**

1301 McKinney Street  
Suite 2875  
Houston, TX 77010+3031  
ATTN: Roger Fisher

**Ithaca #1-17**

Job Ticket: 63679

**DST#: 3**

Test Start: 2016.11.12 @ 08:03:00

## GENERAL INFORMATION:

Formation: **LKC H**

Deviated: No Whipstock: ft (KB)

Time Tool Opened: 09:44:30

Time Test Ended: 13:56:30

Test Type: Conventional Bottom Hole (Initial)

Tester: Ken Swinney

Unit No: 72

**Interval: 3299.00 ft (KB) To 3321.00 ft (KB) (TVD)**

Reference Elevations: 1939.00 ft (KB)

Total Depth: 3321.00 ft (KB) (TVD)

1933.00 ft (CF)

Hole Diameter: 7.88 inches Hole Condition: Fair

KB to GR/CF: 6.00 ft

**Serial #: 6999**

**Inside**

Press@RunDepth: 218.51 psig @ 3317.00 ft (KB)

Capacity: 8000.00 psig

Start Date: 2016.11.12

End Date:

2016.11.12

Last Calib.:

2016.11.12

Start Time:

08:03:05

End Time:

13:56:29

Time On Btm:

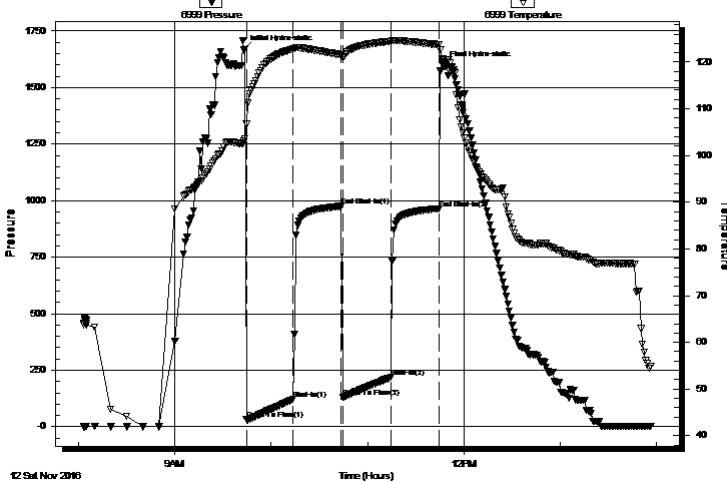
2016.11.12 @ 09:43:00

Time Off Btm:

2016.11.12 @ 11:47:00

**TEST COMMENT:** I.F. 30 minutes Blow built to BOB in 4 minutes  
I.S.I. 30 minutes Blow back built to 7"  
F.F. 30 minutes Blow built to BOB in 8 minutes  
F.S.I. 30 minutes Blow back built to 3"

Pressure vs. Time



## PRESSURE SUMMARY

Time (Min.)	Pressure (psig)	Temp (deg F)	Annotation
0	1665.80	103.03	Initial Hydro-static
2	31.41	106.71	Open To Flow (1)
31	121.72	122.81	Shut-In(1)
61	974.95	121.61	End Shut-In(1)
62	129.53	120.84	Open To Flow (2)
92	218.51	124.47	Shut-In(2)
122	964.60	123.73	End Shut-In(2)
124	1598.92	120.64	Final Hydro-static

## Recovery

Length (ft)	Description	Volume (bbl)
310.00	OCMW Oil 5% Mud 10% Water 85%	4.35
372.00	GO Gas 15% Oil 85%	5.22
0.00	248' GIP	0.00

## Gas Rates

	Choke (inches)	Pressure (psig)	Gas Rate (Mcf/d)



**TRILOBITE TESTING, INC**

# DRILL STEM TEST REPORT

Blackstone Oil & Gas (Kansas) LLC

**17-18S-16W Rush,KS**

1301 McKinney Street  
Suite 2875  
Houston, TX 77010+3031  
ATTN: Roger Fisher

**Ithaca #1-17**

Job Ticket: 63679

**DST#: 3**

Test Start: 2016.11.12 @ 08:03:00

## GENERAL INFORMATION:

Formation: **LKC H**

Deviated: No Whipstock: ft (KB)

Time Tool Opened: 09:44:30

Time Test Ended: 13:56:30

Test Type: Conventional Bottom Hole (Initial)

Tester: Ken Swinney

Unit No: 72

**Interval: 3299.00 ft (KB) To 3321.00 ft (KB) (TVD)**

Reference Elevations: 1939.00 ft (KB)

Total Depth: 3321.00 ft (KB) (TVD)

1933.00 ft (CF)

Hole Diameter: 7.88 inches Hole Condition: Fair

KB to GR/CF: 6.00 ft

**Serial #: 8960 Outside**

Press@RunDepth: 962.81 psig @ 3318.00 ft (KB)

Capacity: 8000.00 psig

Start Date: 2016.11.12

End Date:

2016.11.12

Last Calib.:

2016.11.12

Start Time: 08:03:05

End Time:

13:55:59

Time On Btm:

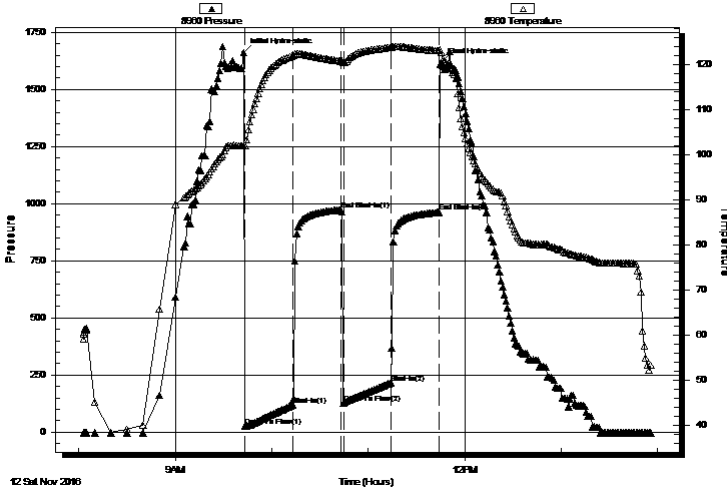
2016.11.12 @ 09:42:30

Time Off Btm:

2016.11.12 @ 11:45:30

**TEST COMMENT:** I.F. 30 minutes Blow built to BOB in 4 minutes  
I.S.I. 30 minutes Blow back built to 7"  
F.F. 30 minutes Blow built to BOB in 8 minutes  
F.S.I. 30 minutes Blow back built to 3"

Pressure vs. Time



## PRESSURE SUMMARY

Time (Min.)	Pressure (psig)	Temp (deg F)	Annotation
0	1662.71	102.02	Initial Hydro-static
1	26.27	101.97	Open To Flow (1)
31	120.26	121.92	Shut-In(1)
61	973.25	120.75	End Shut-In(1)
62	129.01	120.36	Open To Flow (2)
92	217.06	123.78	Shut-In(2)
122	962.81	123.08	End Shut-In(2)
123	1618.25	122.59	Final Hydro-static

## Recovery

Length (ft)	Description	Volume (bbl)
310.00	OCMW Oil 5% Mud 10% Water 85%	4.35
372.00	GO Gas 15% Oil 85%	5.22
0.00	248' GIP	0.00

## Gas Rates

	Choke (inches)	Pressure (psig)	Gas Rate (Mcf/d)



**TRILOBITE  
TESTING, INC**

# DRILL STEM TEST REPORT

**TOOL DIAGRAM**

Blackstone Oil & Gas (Kansas) LLC

**17-18S-16W Rush,KS**

1301 McKinney Street  
Suite 2875  
Houston, TX 77010+3031  
ATTN: Roger Fisher

**Ithaca #1-17**

Job Ticket: 63679

**DST#: 3**

Test Start: 2016.11.12 @ 08:03:00

## Tool Information

Drill Pipe:	Length: 3301.00 ft	Diameter: 3.80 inches	Volume: 46.30 bbl	Tool Weight: 2000.00 lb
Heavy Wt. Pipe:	Length: 0.00 ft	Diameter: 0.00 inches	Volume: 0.00 bbl	Weight set on Packer: 20000.00 lb
Drill Collar:	Length: 0.00 ft	Diameter: 0.00 inches	Volume: 0.00 bbl	Weight to Pull Loose: 32000.00 lb
			<u>Total Volume: 46.30 bbl</u>	Tool Chased 0.00 ft
Drill Pipe Above KB:	22.00 ft			String Weight: Initial 28000.00 lb
Depth to Top Packer:	3299.00 ft			Final 28000.00 lb
Depth to Bottom Packer:	ft			
Interval between Packers:	22.00 ft			
Tool Length:	42.00 ft			
Number of Packers:	2	Diameter: 6.75 inches		

Tool Comments:

Tool Description	Length (ft)	Serial No.	Position	Depth (ft)	Accum. Lengths
------------------	-------------	------------	----------	------------	----------------

Shut-In Tool	5.00			3284.00	
Hydraulic tool	5.00			3289.00	
Top Packer	5.00			3294.00	
Packer	5.00			3299.00	20.00 Bottom Of Top Packer
Anchor	17.00			3316.00	
Recorder	1.00	6999	Inside	3317.00	
Recorder	1.00	8960	Outside	3318.00	
Bullnose	3.00			3321.00	22.00 Anchor Tool

**Total Tool Length: 42.00**



**TRILOBITE  
TESTING, INC**

# DRILL STEM TEST REPORT

**FLUID SUMMARY**

Blackstone Oil & Gas (Kansas) LLC

**17-18S-16W Rush,KS**

1301 McKinney Street  
Suite 2875  
Houston, TX 77010+3031  
ATTN: Roger Fisher

**Ithaca #1-17**

Job Ticket: 63679

**DST#: 3**

Test Start: 2016.11.12 @ 08:03:00

## Mud and Cushion Information

Mud Type: Gel Chem  
Mud Weight: 9.00 lb/gal  
Viscosity: 52.00 sec/qt  
Water Loss: 8.78 in<sup>3</sup>  
Resistivity: ohm.m  
Salinity: 5000.00 ppm  
Filter Cake: 1.00 inches

Cushion Type:  
Cushion Length: ft  
Cushion Volume: bbl  
Gas Cushion Type:  
Gas Cushion Pressure: psig

Oil API: 21 deg API  
Water Salinity: 28000 ppm

## Recovery Information

Recovery Table

Length ft	Description	Volume bbl
310.00	OCMW Oil 5% Mud 10% Water 85%	4.348
372.00	GO Gas 15% Oil 85%	5.218
0.00	248' GIP	0.000

Total Length: 682.00 ft      Total Volume: 9.566 bbl

Num Fluid Samples: 0

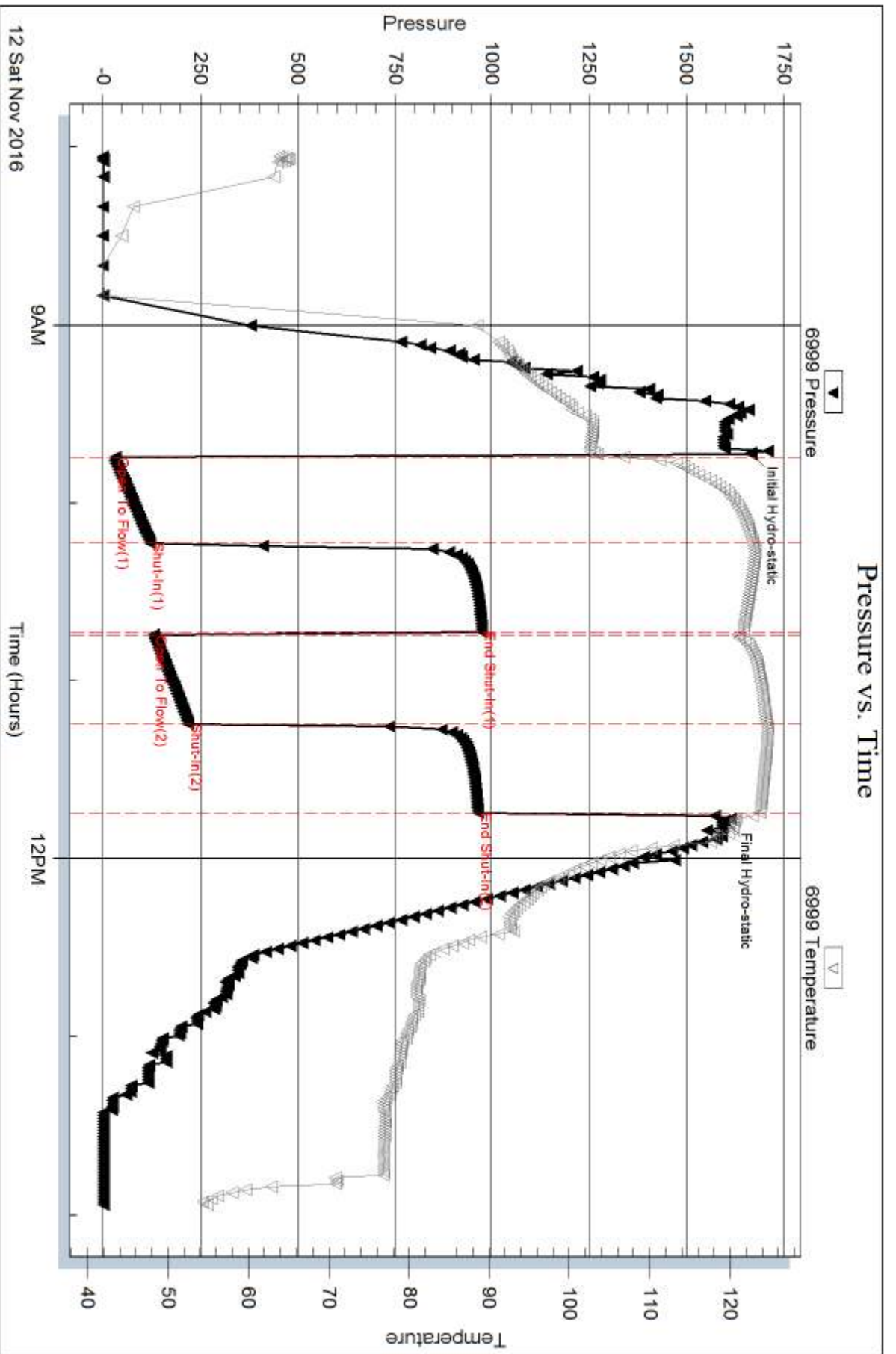
Num Gas Bombs: 0

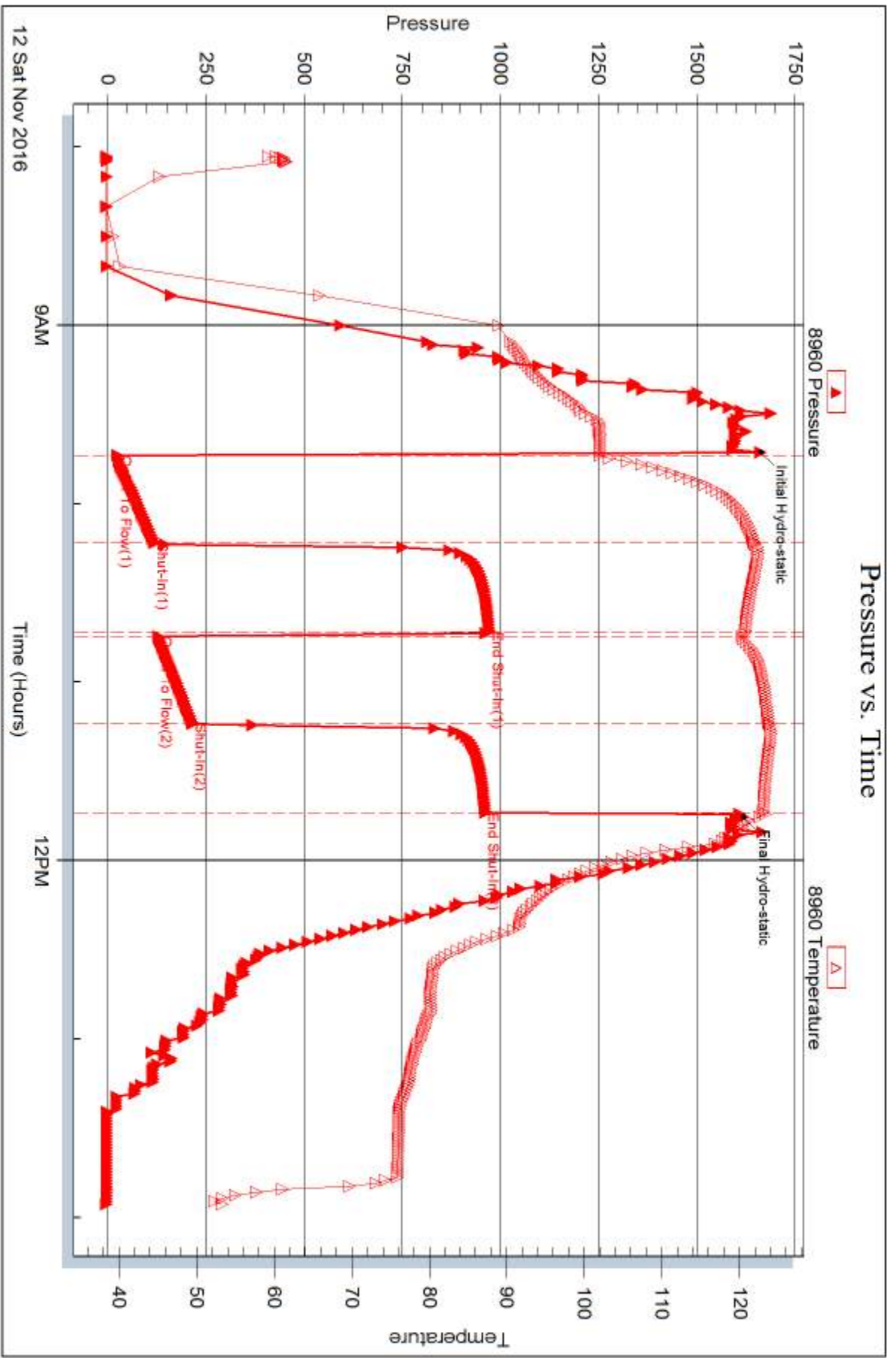
Serial #:

Laboratory Name:

Laboratory Location:

Recovery Comments: Recovery Chlorides .275 ohms @ 60 degrees







## DRILL STEM TEST REPORT

Prepared For: **Blackstone Oil & Gas (Kansas) LLC**

1301 McKinney Street  
Suite 2875  
Houston, TX 77010+3031

ATTN: Roger Fisher

**Ithaca #1-17**

**17-18S-16W Rush,KS**

Start Date: 2016.11.12 @ 23:35:00

End Date: 2016.11.13 @ 04:26:30

Job Ticket #: 63680                      DST #: 4

Trilobite Testing, Inc  
PO Box 362 Hays, KS 67601  
ph: 785-625-4778 fax: 785-625-5620

Printed: 2016.11.15 @ 10:27:08



**TRILOBITE TESTING, INC**

# DRILL STEM TEST REPORT

Blackstone Oil & Gas (Kansas) LLC

**17-18S-16W Rush,KS**

1301 McKinney Street  
Suite 2875  
Houston, TX 77010+3031  
ATTN: Roger Fisher

**Ithaca #1-17**

Job Ticket: 63680

**DST#: 4**

Test Start: 2016.11.12 @ 23:35:00

## GENERAL INFORMATION:

Formation: **LKC K**

Deviated: No Whipstock: ft (KB)

Time Tool Opened: 01:02:30

Time Test Ended: 04:26:30

Test Type: Conventional Bottom Hole (Initial)

Tester: Ken Swinney

Unit No: 72

**Interval: 3362.00 ft (KB) To 3371.00 ft (KB) (TVD)**

Reference Elevations: 1939.00 ft (KB)

Total Depth: 3371.00 ft (KB) (TVD)

1933.00 ft (CF)

Hole Diameter: 7.88 inches Hole Condition: Fair

KB to GR/CF: 6.00 ft

**Serial #: 6999 Inside**

Press@RunDepth: 13.32 psig @ 3367.00 ft (KB)

Capacity: 8000.00 psig

Start Date: 2016.11.12

End Date:

2016.11.13

Last Calib.:

2016.11.13

Start Time: 23:35:05

End Time:

04:26:29

Time On Btm:

2016.11.13 @ 01:01:00

Time Off Btm:

2016.11.13 @ 03:04:00

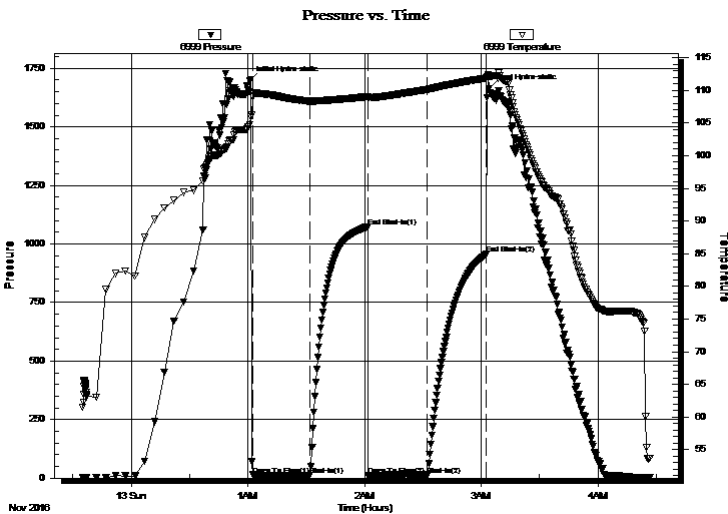
**TEST COMMENT:** I.F. 30 minutes Blow built to BOB in 10 seconds GTS in 23 minutes to light to guage

I.S.I. 30 minutes No blow back

F.F. 30 minutes BOB at open

F.S.I. 30 minutes No blow back

## PRESSURE SUMMARY



Time (Min.)	Pressure (psig)	Temp (deg F)	Annotation
0	1695.41	104.75	Initial Hydro-static
2	13.67	108.95	Open To Flow (1)
31	11.67	108.33	Shut-In(1)
61	1072.10	109.06	End Shut-In(1)
61	13.23	108.87	Open To Flow (2)
91	13.32	110.13	Shut-In(2)
122	955.50	111.88	End Shut-In(2)
123	1664.61	112.12	Final Hydro-static

## Recovery

Length (ft)	Description	Volume (bbl)
10.00	Mud 100%	0.14
0.00	GTS	0.00

## Gas Rates

	Choke (inches)	Pressure (psig)	Gas Rate (Mcf/d)
First Gas Rate	0.13	6.00	7.63
Last Gas Rate	0.13	7.00	8.01
Max. Gas Rate	0.13	7.00	8.01





**TRILOBITE TESTING, INC**

# DRILL STEM TEST REPORT

Blackstone Oil & Gas (Kansas) LLC

**17-18S-16W Rush,KS**

1301 McKinney Street  
Suite 2875  
Houston, TX 77010+3031  
ATTN: Roger Fisher

**Ithaca #1-17**

Job Ticket: 63680

**DST#: 4**

Test Start: 2016.11.12 @ 23:35:00

## GENERAL INFORMATION:

Formation: **LKC K**

Deviated: No Whipstock: ft (KB)

Time Tool Opened: 01:02:30

Time Test Ended: 04:26:30

Test Type: Conventional Bottom Hole (Initial)

Tester: Ken Swinney

Unit No: 72

**Interval: 3362.00 ft (KB) To 3371.00 ft (KB) (TVD)**

Reference Elevations: 1939.00 ft (KB)

Total Depth: 3371.00 ft (KB) (TVD)

1933.00 ft (CF)

Hole Diameter: 7.88 inches Hole Condition: Fair

KB to GR/CF: 6.00 ft

**Serial #: 8960 Outside**

Press@RunDepth: 952.98 psig @ 3368.00 ft (KB)

Capacity: 8000.00 psig

Start Date: 2016.11.12

End Date:

2016.11.13

Last Calib.:

2016.11.13

Start Time: 23:35:05

End Time:

04:25:59

Time On Btm:

2016.11.13 @ 01:01:00

Time Off Btm:

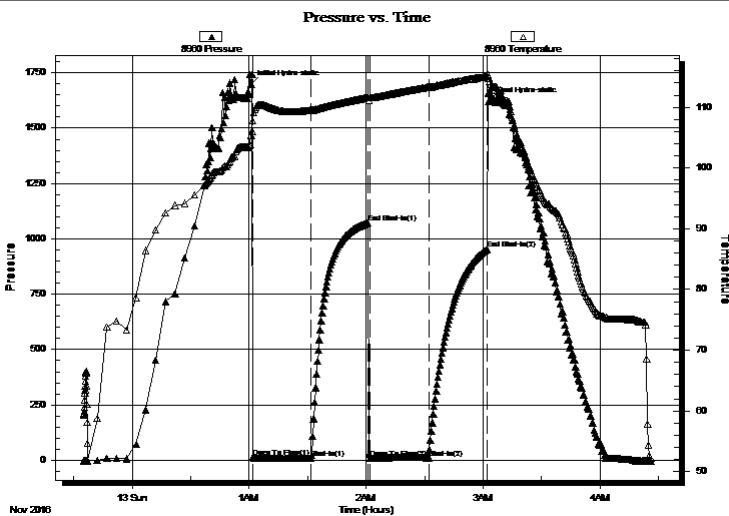
2016.11.13 @ 03:03:00

**TEST COMMENT:** I.F. 30 minutes Blow built to BOB in 10 seconds GTS in 23 minutes to light to guage

I.S.I. 30 minutes No blow back

F.F. 30 minutes BOB at open

F.S.I. 30 minutes No blow back



## PRESSURE SUMMARY

Time (Min.)	Pressure (psig)	Temp (deg F)	Annotation
0	1698.53	105.41	Initial Hydro-static
1	12.45	107.80	Open To Flow (1)
31	9.91	109.56	Shut-In(1)
60	1071.34	111.63	End Shut-In(1)
61	11.07	111.56	Open To Flow (2)
91	11.41	113.35	Shut-In(2)
121	952.98	115.05	End Shut-In(2)
122	1622.08	114.81	Final Hydro-static

## Recovery

Length (ft)	Description	Volume (bbl)
10.00	Mud 100%	0.14
0.00	GTS	0.00

## Gas Rates

	Choke (inches)	Pressure (psig)	Gas Rate (Mcf/d)
First Gas Rate	0.13	6.00	7.63
Last Gas Rate	0.13	7.00	8.01
Max. Gas Rate	0.13	7.00	8.01



**TRILOBITE  
TESTING, INC**

# DRILL STEM TEST REPORT

**TOOL DIAGRAM**

Blackstone Oil & Gas (Kansas) LLC

**17-18S-16W Rush,KS**

1301 McKinney Street  
Suite 2875  
Houston, TX 77010+3031  
ATTN: Roger Fisher

**Ithaca #1-17**

Job Ticket: 63680

**DST#: 4**

Test Start: 2016.11.12 @ 23:35:00

## Tool Information

Drill Pipe:	Length: 3362.00 ft	Diameter: 3.80 inches	Volume: 47.16 bbl	Tool Weight:	2000.00 lb
Heavy Wt. Pipe:	Length: 0.00 ft	Diameter: 0.00 inches	Volume: 0.00 bbl	Weight set on Packer:	20000.00 lb
Drill Collar:	Length: 0.00 ft	Diameter: 0.00 inches	Volume: 0.00 bbl	Weight to Pull Loose:	30000.00 lb
			<u>Total Volume: 47.16 bbl</u>	Tool Chased	0.00 ft
Drill Pipe Above KB:	20.00 ft			String Weight: Initial	28000.00 lb
Depth to Top Packer:	3362.00 ft			Final	28000.00 lb
Depth to Bottom Packer:	ft				
Interval between Packers:	9.00 ft				
Tool Length:	29.00 ft				
Number of Packers:	2	Diameter: 6.75 inches			

Tool Comments:

Tool Description	Length (ft)	Serial No.	Position	Depth (ft)	Accum. Lengths
------------------	-------------	------------	----------	------------	----------------

Shut-In Tool	5.00			3347.00	
Hydraulic tool	5.00			3352.00	
Top Packer	5.00			3357.00	
Packer	5.00			3362.00	20.00 Bottom Of Top Packer
Anchor	4.00			3366.00	
Recorder	1.00	6999	Inside	3367.00	
Recorder	1.00	8960	Outside	3368.00	
Bullnose	3.00			3371.00	9.00 Anchor Tool

**Total Tool Length: 29.00**



**TRILOBITE  
TESTING, INC**

# DRILL STEM TEST REPORT

**FLUID SUMMARY**

Blackstone Oil & Gas (Kansas) LLC

**17-18S-16W Rush,KS**

1301 McKinney Street  
Suite 2875  
Houston, TX 77010+3031  
ATTN: Roger Fisher

**Ithaca #1-17**

Job Ticket: 63680

**DST#: 4**

Test Start: 2016.11.12 @ 23:35:00

## Mud and Cushion Information

Mud Type: Gel Chem  
Mud Weight: 9.00 lb/gal  
Viscosity: 57.00 sec/qt  
Water Loss: 8.79 in<sup>3</sup>  
Resistivity: ohm.m  
Salinity: 5000.00 ppm  
Filter Cake: 1.00 inches

Cushion Type:  
Cushion Length: ft  
Cushion Volume: bbl  
Gas Cushion Type:  
Gas Cushion Pressure: psig

Oil API: deg API  
Water Salinity: ppm

## Recovery Information

Recovery Table

Length ft	Description	Volume bbl
10.00	Mud 100%	0.140
0.00	GTS	0.000

Total Length: 10.00 ft      Total Volume: 0.140 bbl

Num Fluid Samples: 0      Num Gas Bombs: 0      Serial #:

Laboratory Name:      Laboratory Location:

Recovery Comments:



**TRILOBITE  
TESTING, INC.**

## DRILL STEM TEST REPORT

**GAS RATES**

Blackstone Oil & Gas (Kansas) LLC

**17-18S-16W Rush,KS**

1301 McKinney Street  
Suite 2875  
Houston, TX 77010+3031  
ATTN: Roger Fisher

**Ithaca #1-17**

Job Ticket: 63680

**DST#: 4**

Test Start: 2016.11.12 @ 23:35:00

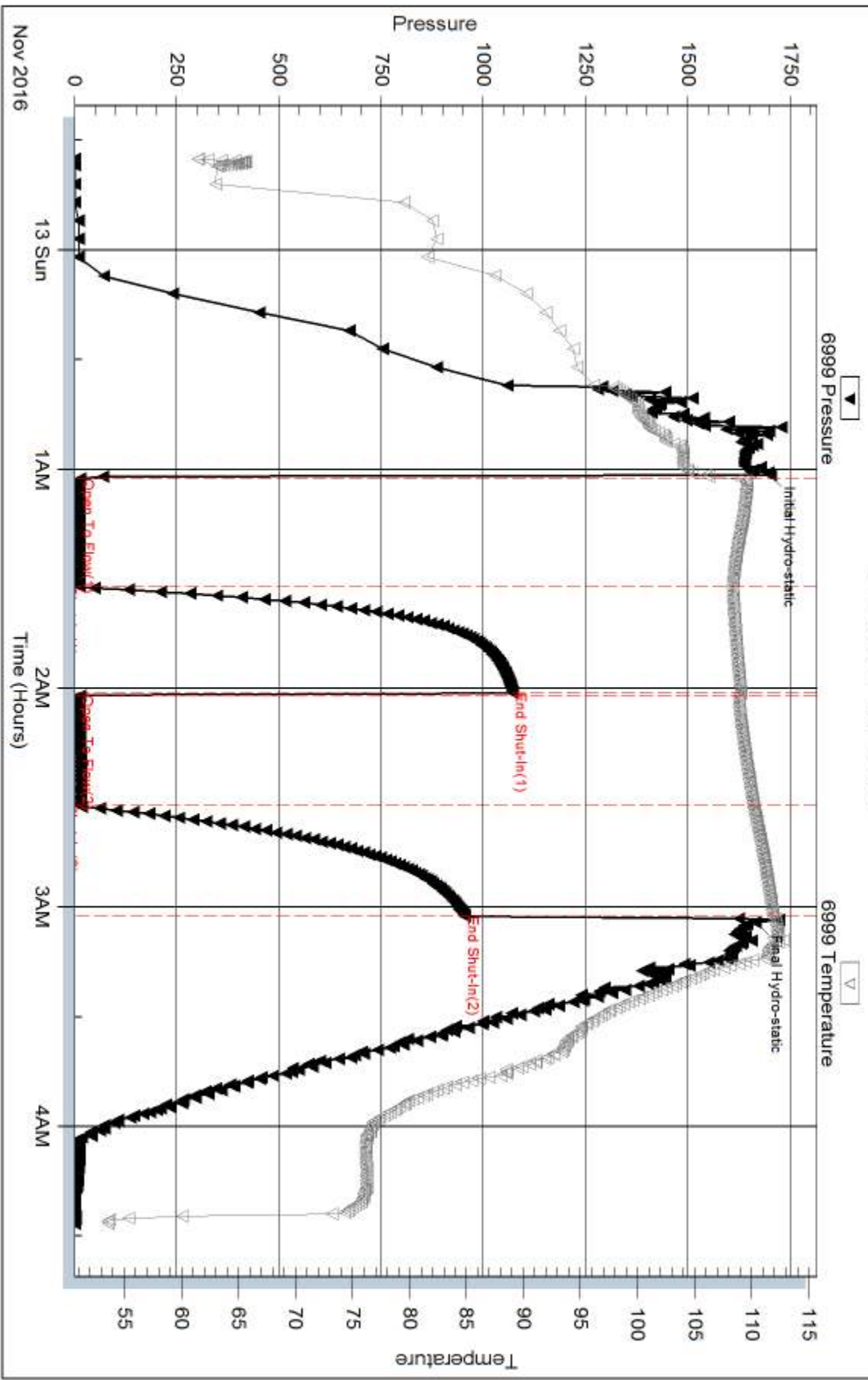
### Gas Rates Information

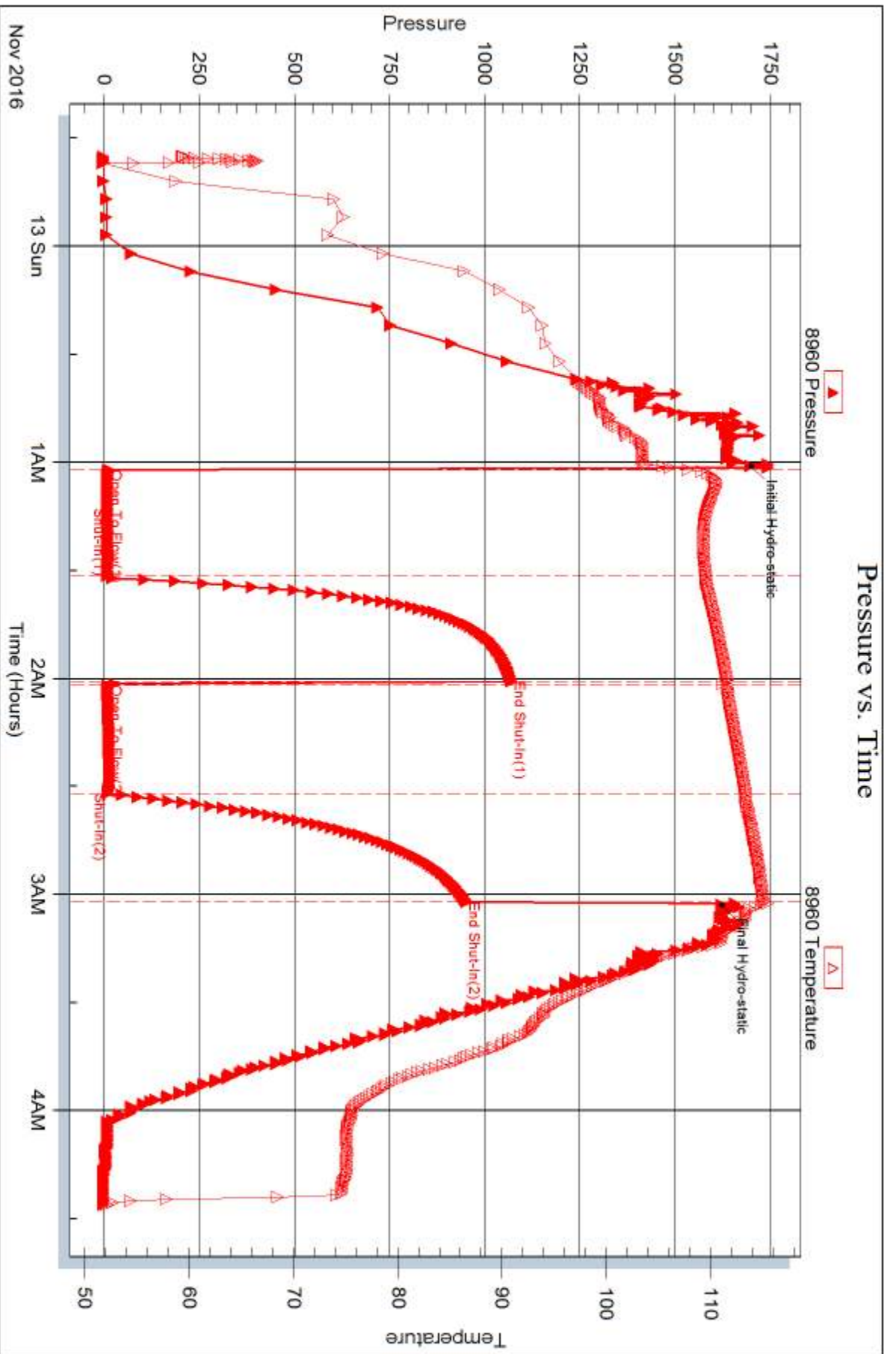
Temperature: 59 (deg F)  
Relative Density: 0.65  
Z Factor: 0.8

Gas Rates Table

Flow Period	Elapsed Time	Choke (inches)	Pressure (psig)	Gas Rate (Mcf/d)
2	10	0.13	6.00	7.63
2	20	0.13	7.00	8.01
2	30	0.13	7.00	8.01

### Pressure vs. Time







# TRILOBITE TESTING INC.

1515 Commerce Parkway • Hays, Kansas 67601

## Test Ticket

NO. **63677**

Well Name & No. Ithaca #1-17 Test No. 1 Date 11/10/16  
 Company Blackstone Oil & Gas (Kansas) LLC Elevation 1939 KB 1933 GL  
 Address 1301 McKinney Street Suite 2875 Houston TX 77010-3031  
 Co. Rep / Geo. Roger Fisher Rig Royal Rig 1  
 Location: Sec. 17 Twp. 18S Rge. 16W Co. Rush State KS

Interval Tested 3195-3212 Zone Tested Lansing/Kansas City zone C  
 Anchor Length 17 Drill Pipe Run 3205 Mud Wt. 8.7  
 Top Packer Depth 3190 Drill Collars Run — Vis 48  
 Bottom Packer Depth 3195 Wt. Pipe Run — WL 9.2  
 Total Depth 3212 Chlorides 5000 ppm System LCM 2#

Blow Description I.F. Blow built to BOB in 10 sec. Gas to surface in 30 sec  
I.S.I. no blow back

F.F. Blow built to BOB in 5 sec.

F.S.I. no blow back / Light oil coat in pipe when pulled test

Rec	Feet of	%gas	%oil	%water	%mud
<u>70</u>	<u>Mud</u>				<u>100%</u>
Rec	Feet of	%gas	%oil	%water	%mud
Rec	Feet of	%gas	%oil	%water	%mud
Rec	Feet of	%gas	%oil	%water	%mud
Rec	Feet of	%gas	%oil	%water	%mud

Rec Total 70 BHT 117 Gravity 1050 API RW @ °F Chlorides ppm

- (A) Initial Hydrostatic 1592
- (B) First Initial Flow 455
- (C) First Final Flow 485
- (D) Initial Shut-In 988
- (E) Second Initial Flow 435
- (F) Second Final Flow 496
- (G) Final Shut-In 986
- (H) Final Hydrostatic 1565

- Test 1050
- Jars
- Safety Joint
- Circ Sub
- Hourly Standby
- Mileage 44 33
- Sampler
- Straddle
- Shale Packer
- Extra Packer
- Extra Recorder
- Day Standby
- Accessibility
- Sub Total 1083

T-On Location 2:41 am  
 T-Started 4:42 am  
 T-Open 6:30 am  
 T-Pulled 9:00 am  
 T-Out 10:29 am

Comments \_\_\_\_\_  
 Ruined Shale Packer  
 Ruined Packer  
 Extra Copies 2 copies  
 Sub Total \_\_\_\_\_  
 Total 1083  
 MP/DST Disc't \_\_\_\_\_

Approved By [Signature] Our Representative [Signature]

Trilobite Testing Inc. shall not be liable for damaged of any kind of the property or personnel of the one for whom a test is made, or for any loss suffered or sustained, directly or indirectly, through the use of its equipment, or its statements or opinion concerning the results of any test, tools lost or damaged in the hole shall be paid for at cost by the party for whom the test is made.





# TRILOBITE TESTING INC.

1515 Commerce Parkway • Hays, Kansas 67601

## Test Ticket

NO. **63678**

Well Name & No. Ithaca #1-17 Test No. 2 Date 11 NOV 16  
 Company Blackstone Oil & Gas (Kansas) LLC Elevation 1939 KB 1933 GL  
 Address 1301 McKinney Street Suite 2875 Houston TX 77010+3031  
 Co. Rep / Geo. Roger Fisher Rig Royal Rig 2  
 Location: Sec. 17 Twp. 18S Rge. 16W Co. Rush State KS

Interval Tested 3262-3270 Zone Tested Lansing/Kansas City zone F  
 Anchor Length 8 Drill Pipe Run 3268 Mud Wt. 9.0  
 Top Packer Depth 3257 Drill Collars Run ✓ Vis 52  
 Bottom Packer Depth 3262 Wt. Pipe Run ✓ WL 8.8  
 Total Depth 3270 Chlorides 5000 ppm System LCM 2#

Blow Description I.F. Blow built to bottom of bucket in 1 min 15 sec  
F.S.I. Blow back built to 5 1/2 inches  
F.F. Blow built to bottom of bucket in 2 min 15 sec  
F.S.I. Light surface blow back

Rec	Feet of	%gas	%oil	%water	%mud
<u>1612</u>	<u>Gassy Water</u>	<u>10</u>	<u>90</u>		
<u>10</u>	<u>Clean oil</u>	<u>100</u>			
<u>114</u>	<u>Gas in pipe</u>	<u>100</u>			

Rec Total \_\_\_\_\_ BHT 122 Gravity \_\_\_\_\_ API RW .51 @ 36 °F Chlorides 25,000 ppm

(A) Initial Hydrostatic 1632  Test 1050 T-On Location 6:16 pm  
 (B) First Initial Flow 91  Jars \_\_\_\_\_ T-Started 6:48 pm  
 (C) First Final Flow 566  Safety Joint \_\_\_\_\_ T-Open 8:11 pm  
 (D) Initial Shut-In 940  Circ Sub \_\_\_\_\_ T-Pulled 10:26 pm  
 (E) Second Initial Flow 578  Hourly Standby \_\_\_\_\_ T-Out 12:50 am  
 (F) Second Final Flow 807  Mileage 44 33 Comments \_\_\_\_\_  
 (G) Final Shut-In 948  Sampler \_\_\_\_\_  
 (H) Final Hydrostatic 1588  Straddle \_\_\_\_\_  Ruined Shale Packer \_\_\_\_\_  
 Shale Packer \_\_\_\_\_  Ruined Packer \_\_\_\_\_  
 Extra Packer \_\_\_\_\_  Extra Copies \_\_\_\_\_  
 Initial Open 30  Extra Recorder \_\_\_\_\_ Sub Total 0  
 Initial Shut-In 30  Day Standby \_\_\_\_\_ Total 1083  
 Final Flow 30  Accessibility \_\_\_\_\_ MP/DST Disc't \_\_\_\_\_  
 Final Shut-In 45 Sub Total 1083

Approved By [Signature] Our Representative [Signature]

Trilobite Testing Inc. shall not be liable for damaged of any kind of the property or personnel of the one for whom a test is made, or for any loss suffered or sustained, directly or indirectly, through the use of its equipment, or its statements or opinion concerning the results of any test, tools lost or damaged in the hole shall be paid for at cost by the party for whom the test is made.





# TRILOBITE TESTING INC.

1515 Commerce Parkway • Hays, Kansas 67601

## Test Ticket

NO. **63679**

4/10

Well Name & No. Ithaca #1-17 Test No. 3 Date 12 NOV 16  
 Company Blackstone Oil & Gas (Kansas) LLC Elevation 1939 KB 1933 GL  
 Address 1301 McKinney Street Suite 2875 Houston TX 77010+3031  
 Co. Rep / Geo. Roger Fisher Rig Royal Rig 2  
 Location: Sec. 17 Twp. 185 Rge. 16W Co. Rush State KS

Interval Tested 3299-3321 Zone Tested Lansing/Kansas City zone H  
 Anchor Length 22 Drill Pipe Run 3301 Mud Wt. 9  
 Top Packer Depth 3294 Drill Collars Run — Vis 52  
 Bottom Packer Depth 3299 Wt. Pipe Run — WL 8.8  
 Total Depth 3321 Chlorides 5000 ppm System LCM 2#

Blow Description I.F. Blow built to bottom of bucket in 4 minutes  
I.S.I Blow back built to 7 inches  
F.F. Blow built to bottom of bucket in 8 minutes  
F.S.I Blow back built to 3 inches

Rec	Feet of	%gas	%oil	%water	%mud
<u>310</u>	<u>oil cut Muddy Water</u>		<u>5</u>	<u>85</u>	<u>10</u>
<u>372</u>	<u>Gassy Oil</u>	<u>15</u>	<u>85</u>		
<u>248</u>	<u>Gas in Pipe</u>	<u>100</u>			

Rec Total 682 BHT 124 Gravity 21 API RW .275 @ 60 °F Chlorides 28,000 ppm  
 (A) Initial Hydrostatic 1665  Test 1050 T-On Location 7:25 am  
 (B) First Initial Flow 31  Jars \_\_\_\_\_ T-Started 8:03 am  
 (C) First Final Flow 121  Safety Joint \_\_\_\_\_ T-Open 9:43 am  
 (D) Initial Shut-In 974  Circ Sub \_\_\_\_\_ T-Pulled 11:43 am  
 (E) Second Initial Flow 129  Hourly Standby \_\_\_\_\_ T-Out 1:57 pm  
 (F) Second Final Flow 218  Mileage 44 33 Comments \_\_\_\_\_  
 (G) Final Shut-In 964  Sampler \_\_\_\_\_  
 (H) Final Hydrostatic 1598  Straddle \_\_\_\_\_  
 Ruined Shale Packer \_\_\_\_\_  
 Ruined Packer \_\_\_\_\_  
 Initial Open 30  Shale Packer \_\_\_\_\_  
 Initial Shut-In 30  Extra Packer \_\_\_\_\_  
 Final Flow 30  Extra Recorder \_\_\_\_\_  
 Final Shut-In 30  Day Standby \_\_\_\_\_  
 Accessibility \_\_\_\_\_  
 Sub Total 1083 Sub Total 1088 MP/DST Disc't \_\_\_\_\_  
 Extra Copies 2 copies 5

Approved By [Signature] Our Representative [Signature]

TriLOBITE TESTING Inc. shall not be liable for damaged of any kind of the property or personnel of the one for whom a test is made, or for any loss suffered or sustained, directly or indirectly, through the use of its equipment, or its statements or opinion concerning the results of any test, tools lost or damaged in the hole shall be paid for at cost by the party for whom the test is made.





# TRILOBITE TESTING INC.

1515 Commerce Parkway • Hays, Kansas 67601

## Test Ticket

NO. **63680**

4/10

Well Name & No. Ithaca #17 Test No. 4 Date 12 NOV 16  
 Company Blackstone Oil & Gas (Kansas) LLC Elevation 1939 KB 1933 GL  
 Address 1301 McKinney Street Suite 2875 Houston TX 77010+3031  
 Co. Rep / Geo. Roger Fisher Rig Royal Rig 1  
 Location: Sec. 17 Twp. 18S Rge. 16W Co. Rush State KS

Interval Tested 3362-3371 Zone Tested Lansing/Kansas City zone K  
 Anchor Length 9 Drill Pipe Run 3362 Mud Wt. 9.0  
 Top Packer Depth 3357 Drill Collars Run - Vis 57  
 Bottom Packer Depth 3362 Wt. Pipe Run - WL 8.8  
 Total Depth 3371 Chlorides 5000 ppm System LCM 1#

Blow Description IF Blow built to bottom of bucket in 10 seconds/Gas 73min  
I.S.I. No blow back  
F.F. Blow at bottom of bucket at open  
F.S.I. No blow back

Rec	Feet of	%gas	%oil	%water	%mud
<u>10</u>	<u>Mud</u>			<u>100</u>	

Rec Total 10 BHT 112 Gravity \_\_\_\_\_ API RW \_\_\_\_\_ @ \_\_\_\_\_ °F Chlorides \_\_\_\_\_ ppm

(A) Initial Hydrostatic 1695  Test 1050 T-On Location 10:59 pm  
 (B) First Initial Flow 13  Jars \_\_\_\_\_ T-Started 11:25 pm  
 (C) First Final Flow 11  Safety Joint \_\_\_\_\_ T-Open 1:02 am  
 (D) Initial Shut-In 1072  Circ Sub \_\_\_\_\_ T-Pulled 3:07 am  
 (E) Second Initial Flow 13  Hourly Standby \_\_\_\_\_ T-Out 4:23 am  
 (F) Second Final Flow 13  Mileage 44 66 Comments \_\_\_\_\_  
 (G) Final Shut-In 953  Sampler \_\_\_\_\_ loaded tools 10/14 10:35  
 (H) Final Hydrostatic 1664  Straddle \_\_\_\_\_  Ruined Shale Packer \_\_\_\_\_  
 Shale Packer \_\_\_\_\_  Ruined Packer \_\_\_\_\_

Initial Open 30  Extra Packer \_\_\_\_\_  Extra Copies \_\_\_\_\_  
 Initial Shut-In 30  Extra Recorder \_\_\_\_\_ Sub Total 0  
 Final Flow 30  Day Standby \_\_\_\_\_ Total 1116  
 Final Shut-In 30  Accessibility \_\_\_\_\_ MP/DST Disc \_\_\_\_\_

Approved By B J FEA Our Representative \_\_\_\_\_  
 Sub Total 1116

Trilobite Testing Inc. shall not be liable for damaged of any kind of the property or personnel of the one for whom a test is made, or for any loss suffered or sustained, directly or indirectly, through the use of its equipment, or its statements or opinion concerning the results of any test, tools lost or damaged in the hole shall be paid for at cost by the party for whom the test is made.