



TRILOBITE TESTING, INC.

DRILL STEM TEST REPORT

Concorde Resources Corp

27-15s-34w Logan, Ks

111 S Main. St
Eufaula, Ok 74432

McDaniel 1-27

Job Ticket: 65673

DST#: 2

ATTN: Larry Nicholson

Test Start: 2017.03.16 @ 14:12:02

GENERAL INFORMATION:

Formation: **Pleasanton- Altamont**

Deviated: No Whipstock: ft (KB)

Time Tool Opened: 16:16:32

Time Test Ended: 22:40:02

Test Type: Conventional Bottom Hole (Reset)

Tester: Brandon Turley

Unit No: 79

Interval: 4312.00 ft (KB) To 4350.00 ft (KB) (TVD)

Reference Elevations: 3006.00 ft (KB)

Total Depth: 4350.00 ft (KB) (TVD)

2996.00 ft (CF)

Hole Diameter: 7.88 inches Hole Condition: Fair

KB to GR/CF: 10.00 ft

Serial #: 8166 Outside

Press@RunDepth: 364.02 psig @ 4317.00 ft (KB)

Capacity: 8000.00 psig

Start Date: 2017.03.16

End Date: 2017.03.16

Last Calib.: 2017.03.16

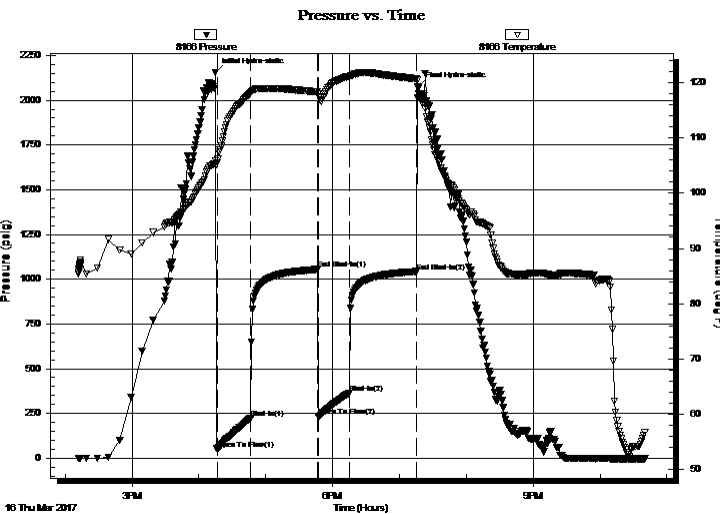
Start Time: 14:12:07

End Time: 22:40:01

Time On Btm: 2017.03.16 @ 16:15:02

Time Off Btm: 2017.03.16 @ 19:16:32

TEST COMMENT: IF: BOB in 4 min.
IS: Surface blow built to BOB in 39 min.
FF: BOB in 4 min.
FS: Surface blow built to 5 1/2.



PRESSURE SUMMARY

Time (Min.)	Pressure (psig)	Temp (deg F)	Annotation
0	2154.91	105.83	Initial Hydro-static
2	48.83	105.51	Open To Flow (1)
32	223.94	118.10	Shut-In(1)
92	1054.79	118.30	End Shut-In(1)
92	232.63	117.96	Open To Flow (2)
120	364.02	121.12	Shut-In(2)
180	1043.18	120.66	End Shut-In(2)
182	2076.93	118.97	Final Hydro-static

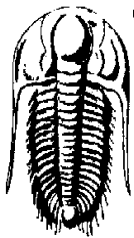
Recovery

Length (ft)	Description	Volume (bbl)
62.00	mcgo 40%g 30%o 30%m	0.87
124.00	mcgo 20%g 40%o 40%m	1.74
372.00	mcgo 20%g 70%o 10%m	5.22
392.00	go 20%g 80%o	5.50
0.00	414 GIP	0.00

Gas Rates

Choke (inches)	Pressure (psig)	Gas Rate (Mcf/d)

* Recovery from multiple tests



TRILOBITE TESTING, INC.

DRILL STEM TEST REPORT

Concorde Resources Corp

27-15s-34w Logan, Ks

111 S Main. St
Eufaula, Ok 74432

McDaniel 1-27

Job Ticket: 65673

DST#: 2

ATTN: Larry Nicholson

Test Start: 2017.03.16 @ 14:12:02

GENERAL INFORMATION:

Formation: **Pleasanton- Altamont**

Deviated: No Whipstock: ft (KB)

Time Tool Opened: 16:16:32

Time Test Ended: 22:40:02

Test Type: Conventional Bottom Hole (Reset)

Tester: Brandon Turley

Unit No: 79

Interval: **4312.00 ft (KB) To 4350.00 ft (KB) (TVD)**

Total Depth: 4350.00 ft (KB) (TVD)

Hole Diameter: 7.88 inches Hole Condition: Fair

Reference Elevations: 3006.00 ft (KB)

2996.00 ft (CF)

KB to GR/CF: 10.00 ft

Serial #: 8875 Inside

Press@RunDepth: psig @ 4317.00 ft (KB)

Start Date: 2017.03.16

End Date:

2017.03.16

Capacity: 8000.00 psig

Last Calib.:

2017.03.16

Start Time: 14:12:15

End Time:

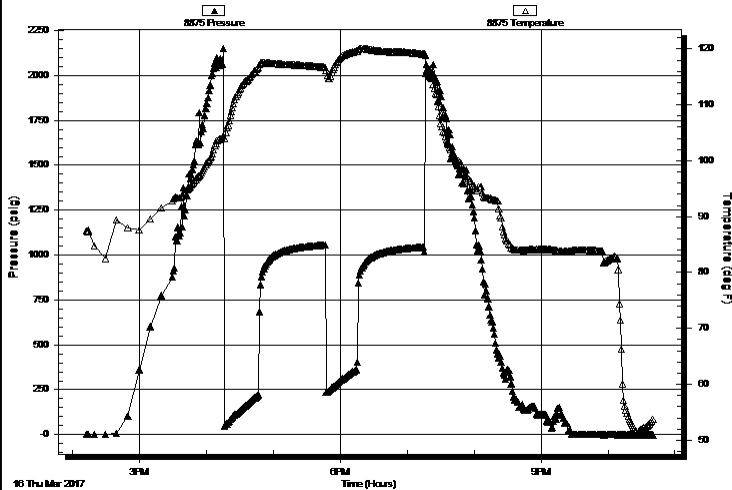
22:40:09

Time On Btm:

Time Off Btm:

TEST COMMENT: IF: BOB in 4 min.
IS: Surface blow built to BOB in 39 min.
FF: BOB in 4 min.
FS: Surface blow built to 5 1/2.

Pressure vs. Time



PRESSURE SUMMARY

Time (Min.)	Pressure (psig)	Temp (deg F)	Annotation

Recovery

Length (ft)	Description	Volume (bbl)
62.00	mcgo 40%g 30%o 30%m	0.87
124.00	mcgo 20%g 40%o 40%m	1.74
372.00	mcgo 20%g 70%o 10%m	5.22
392.00	go 20%g 80%o	5.50
0.00	414 GIP	0.00

Gas Rates

	Choke (inches)	Pressure (psig)	Gas Rate (Mcf/d)

* Recovery from multiple tests



**TRILOBITE
TESTING, INC.**

DRILL STEM TEST REPORT

FLUID SUMMARY

Concorde Resources Corp

27-15s-34w Logan, Ks

111 S Main. St
Eufaula, Ok 74432

McDaniel 1-27

Job Ticket: 65673

DST#: 2

ATTN: Larry Nicholson

Test Start: 2017.03.16 @ 14:12:02

Mud and Cushion Information

Mud Type: Gel Chem

Cushion Type:

Oil API:

32 deg API

Mud Weight: 9.00 lb/gal

Cushion Length:

ft

Water Salinity:

0 ppm

Viscosity: 55.00 sec/qt

Cushion Volume:

bbbl

Water Loss: 7.20 in³

Gas Cushion Type:

Resistivity: 0.00 ohm.m

Gas Cushion Pressure:

psig

Salinity: 3000.00 ppm

Filter Cake: 1.00 inches

Recovery Information

Recovery Table

Length ft	Description	Volume bbbl
62.00	mcgo 40%g 30%o 30%m	0.870
124.00	mcgo 20%g 40%o 40%m	1.739
372.00	mcgo 20%g 70%o 10%m	5.218
392.00	go 20%g 80%o	5.499
0.00	414 GIP	0.000

Total Length: 950.00 ft Total Volume: 13.326 bbl

Num Fluid Samples: 0

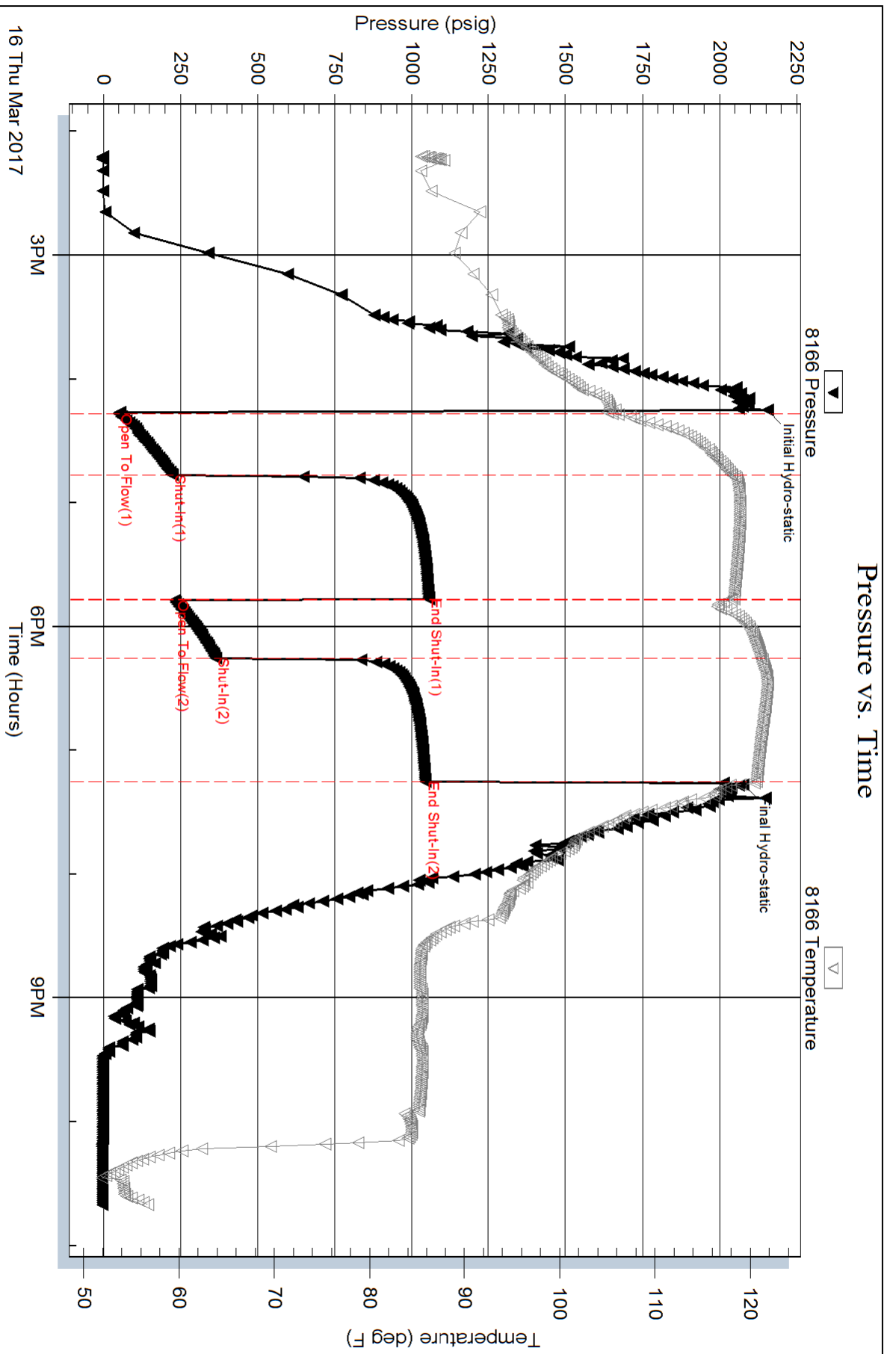
Num Gas Bombs: 0

Serial #:

Laboratory Name:

Laboratory Location:

Recovery Comments: 31@50=32



Serial #: 8875

Inside

Concorde Resources Corp

McDaniel 1-27

DST Test Number: 2

