



**TRILOBITE  
TESTING, INC**

# DRILL STEM TEST REPORT

Suemaour Exploration & Production LLC

**26/6s/28w Sheridan KS**

539 N Carancahua STE 1100  
Corpus Christi, TX 78401

**Spresser #3-26**

Job Ticket: 61275

**DST#: 1**

ATTN: Bob Petersen

Test Start: 2017.01.23 @ 21:41:00

## GENERAL INFORMATION:

Formation: **LKC "C"**

Deviated: No Whipstock: ft (KB)

Time Tool Opened: 00:05:45

Time Test Ended: 05:49:15

Test Type: Conventional Bottom Hole (Initial)

Tester: James Winder

Unit No: 83

**Interval: 3826.00 ft (KB) To 3846.00 ft (KB) (TVD)**

Reference Elevations: 2651.00 ft (KB)

Total Depth: 3846.00 ft (KB) (TVD)

2646.00 ft (CF)

Hole Diameter: 7.88 inches Hole Condition: Fair

KB to GR/CF: 5.00 ft

**Serial #: 8366 Outside**

Press@RunDepth: 81.92 psig @ 3827.00 ft (KB)

Capacity: 8000.00 psig

Start Date: 2017.01.23 End Date: 2017.01.24

Last Calib.: 2017.01.24

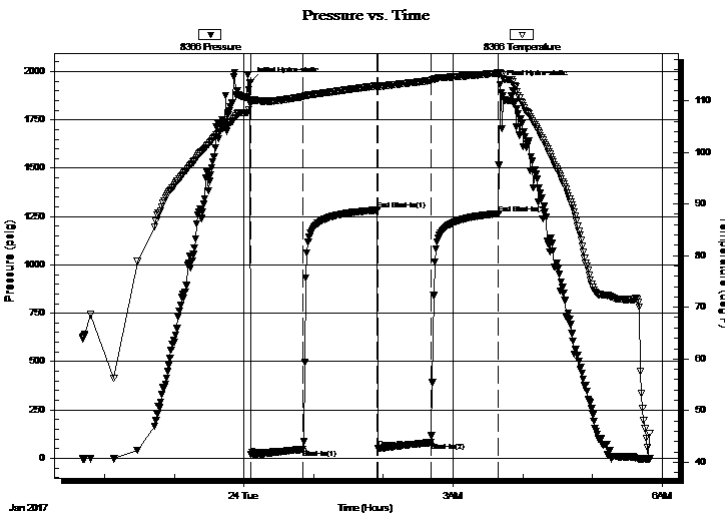
Start Time: 21:41:05 End Time: 05:49:14

Time On Btm: 2017.01.24 @ 00:05:30

Time Off Btm: 2017.01.24 @ 03:40:15

**TEST COMMENT:** 45 - IF: Blow built to 4" (Diesel in bucket)  
60 - IS: No blow back  
45 - FF: Blow started at 7 min., built to 3"  
60 - FS: No blow back

## PRESSURE SUMMARY



Time (Min.)	Pressure (psig)	Temp (deg F)	Annotation
0	1945.75	109.87	Initial Hydro-static
1	17.89	109.47	Open To Flow (1)
45	47.32	110.75	Shut-In(1)
110	1283.71	112.89	End Shut-In(1)
110	50.55	112.74	Open To Flow (2)
156	81.92	113.92	Shut-In(2)
214	1265.47	115.34	End Shut-In(2)
215	1932.74	115.48	Final Hydro-static

## Recovery

Length (ft)	Description	Volume (bbl)
130.00	SMCW 93%w, 7%m	0.64

## Gas Rates

	Choke (inches)	Pressure (psig)	Gas Rate (Mcf/d)





**TRILOBITE  
TESTING, INC**

# DRILL STEM TEST REPORT

## FLUID SUMMARY

Suemaaur Exploration & Production LLC

**26/6s/28w Sheridan KS**

539 N Carancahua STE 1100  
Corpus Christi, TX 78401

**Spresser #3-26**

Job Ticket: 61275

**DST#: 1**

ATTN: Bob Petersen

Test Start: 2017.01.23 @ 21:41:00

### Mud and Cushion Information

Mud Type: Gel Chem

Cushion Type:

Oil API:

deg API

Mud Weight: 9.00 lb/gal

Cushion Length:

ft

Water Salinity:

9000 ppm

Viscosity: 65.00 sec/qt

Cushion Volume:

bbl

Water Loss: 5.59 in<sup>3</sup>

Gas Cushion Type:

Resistivity: ohm.m

Gas Cushion Pressure:

psig

Salinity: 700.00 ppm

Filter Cake: 2.00 inches

### Recovery Information

Recovery Table

Length ft	Description	Volume bbl
130.00	SMCW 93%w , 7%m	0.639

Total Length: 130.00 ft      Total Volume: 0.639 bbl

Num Fluid Samples: 0

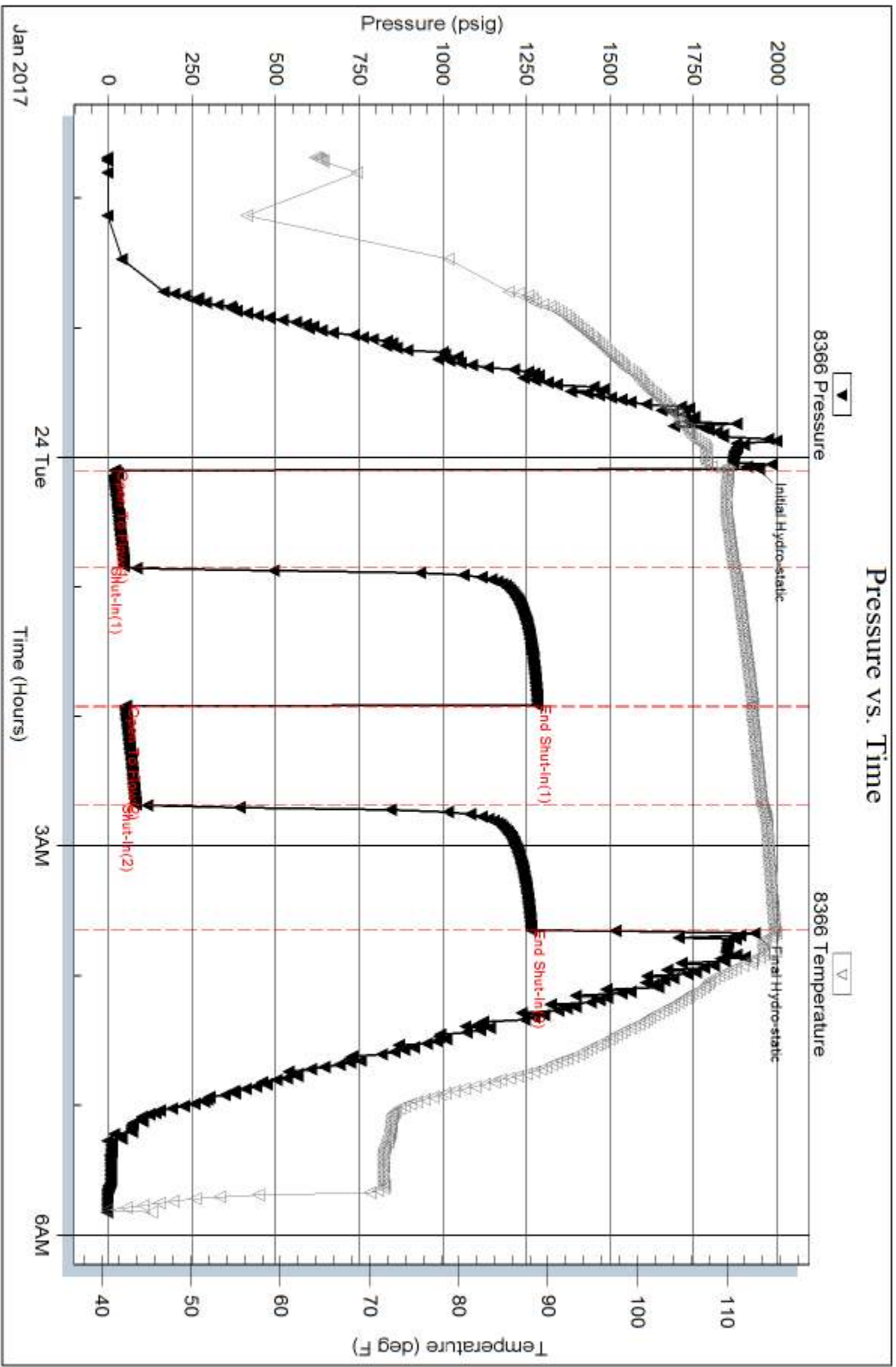
Num Gas Bombs: 0

Serial #:

Laboratory Name:

Laboratory Location:

Recovery Comments: RW = .702 ohms @ 68 deg F  
Chlorides = 9,000 ppm



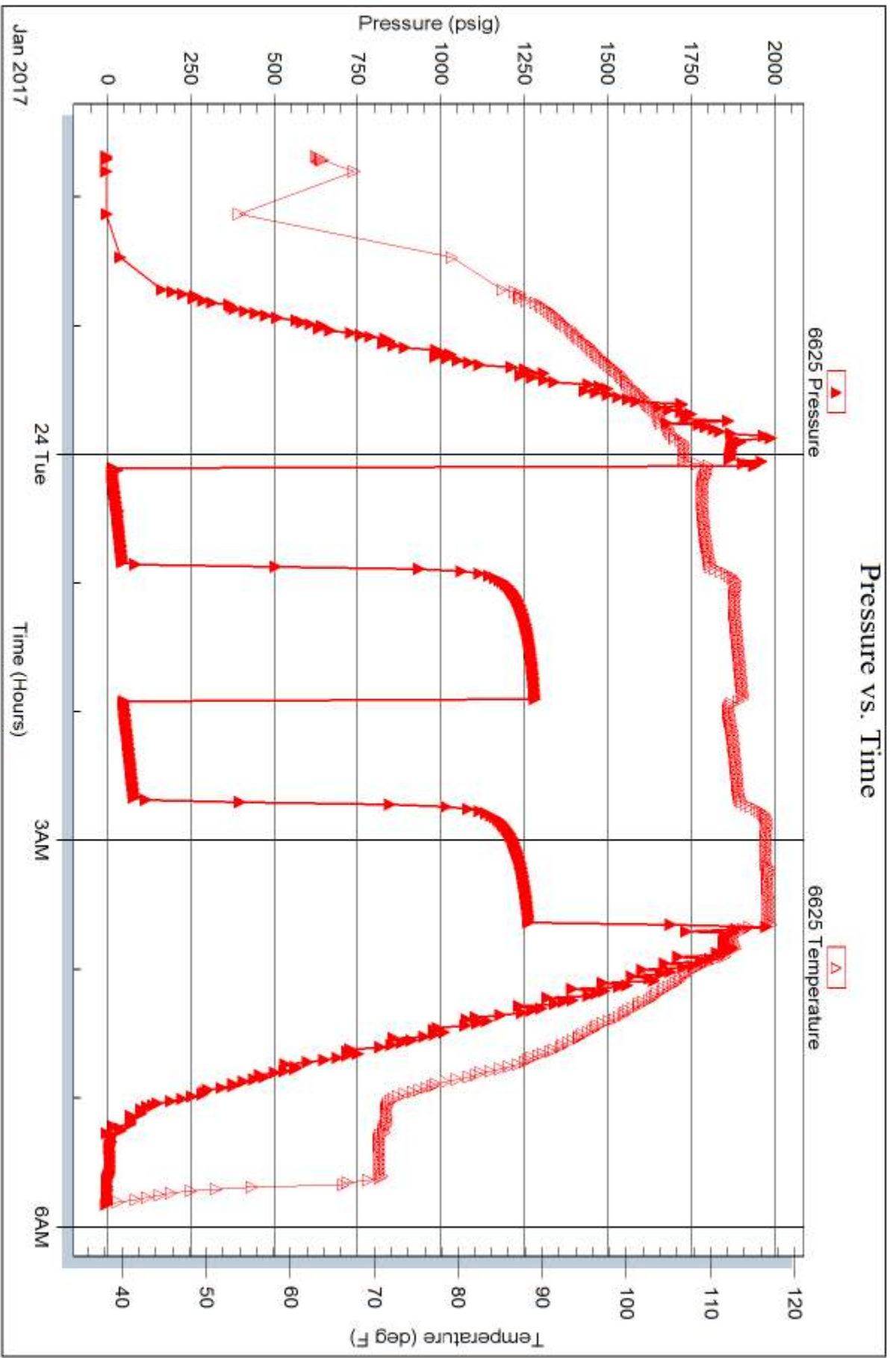
Serial #: 6625

Inside

Suenaur Exploration & Production LLC

Spresser #3-26

DST Test Number: 1



Triobite Testing, Inc

Ref. No: 61275

Printed: 2017.01.24 @ 07:05:21



**TRILOBITE  
TESTING, INC**

# DRILL STEM TEST REPORT

Suemaour Exploration & Production LLC

**26/6s/28w Sheridan KS**

539 N Carancahua STE 1100  
Corpus Christi, TX 78401

**Spresser #3-26**

Job Ticket: 63976

**DST#: 2**

ATTN: Bob Petersen

Test Start: 2017.01.24 @ 16:33:00

## GENERAL INFORMATION:

Formation: **LKC "G"**

Deviated: No Whipstock: ft (KB)

Time Tool Opened: 18:47:30

Time Test Ended: 00:28:30

Test Type: Conventional Bottom Hole (Reset)

Tester: James Winder

Unit No: 83

**Interval: 3886.00 ft (KB) To 3904.00 ft (KB) (TVD)**

Reference Elevations: 2651.00 ft (KB)

Total Depth: 3904.00 ft (KB) (TVD)

2646.00 ft (CF)

Hole Diameter: 7.88 inches Hole Condition: Fair

KB to GR/CF: 5.00 ft

**Serial #: 8366 Outside**

Press@RunDepth: 114.40 psig @ 3887.00 ft (KB)

Capacity: 8000.00 psig

Start Date: 2017.01.24

End Date:

2017.01.25

Last Calib.:

2017.01.25

Start Time: 16:33:05

End Time:

00:28:29

Time On Btm:

2017.01.24 @ 18:44:45

Time Off Btm:

2017.01.24 @ 22:21:45

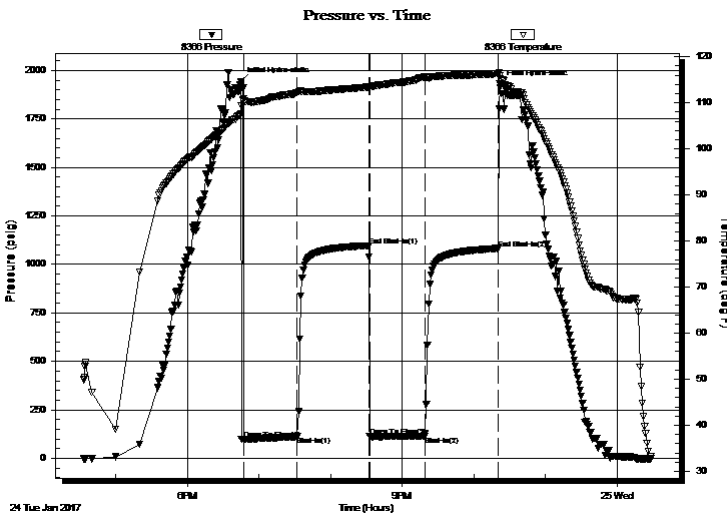
**TEST COMMENT:** 45 - IF: Bled off surge blow, Blow built to 2 1/4" (Diesel in bucket)

60 - IS: No blow back

45 - FF: Blow started at 15 min., built to 2"

60 - FS: No blow back

## PRESSURE SUMMARY



Time (Min.)	Pressure (psig)	Temp (deg F)	Annotation
0	1942.20	107.66	Initial Hydro-static
3	96.49	110.15	Open To Flow (1)
48	111.52	112.25	Shut-In(1)
108	1096.52	113.43	End Shut-In(1)
108	112.44	113.33	Open To Flow (2)
154	114.40	115.60	Shut-In(2)
216	1082.24	116.32	End Shut-In(2)
217	1929.13	115.90	Final Hydro-static

## Recovery

Length (ft)	Description	Volume (bbl)
215.00	OCM 86% m, 12% o, 2% g	1.31

\* Recovery from multiple tests

## Gas Rates

Choke (inches)	Pressure (psig)	Gas Rate (Mcf/d)





**TRILOBITE  
TESTING, INC**

# DRILL STEM TEST REPORT

**TOOL DIAGRAM**

Suemaour Exploration & Production LLC

**26/6s/28w Sheridan KS**

539 N Carancahua STE 1100  
Corpus Christi, TX 78401

**Spresser #3-26**

Job Ticket: 63976

**DST#: 2**

ATTN: Bob Petersen

Test Start: 2017.01.24 @ 16:33:00

## Tool Information

Drill Pipe:	Length: 3675.00 ft	Diameter: 3.80 inches	Volume: 51.55 bbl	Tool Weight: 2500.00 lb
Heavy Wt. Pipe:	Length: 0.00 ft	Diameter: 2.75 inches	Volume: 0.00 bbl	Weight set on Packer: 25000.00 lb
Drill Collar:	Length: 187.00 ft	Diameter: 2.25 inches	Volume: 0.92 bbl	Weight to Pull Loose: 56000.00 lb
			<u>Total Volume: 52.47 bbl</u>	Tool Chased 7.00 ft
Drill Pipe Above KB:	5.00 ft			String Weight: Initial 52000.00 lb
Depth to Top Packer:	3886.00 ft			Final 54000.00 lb
Depth to Bottom Packer:	ft			
Interval between Packers:	18.00 ft			
Tool Length:	47.00 ft			
Number of Packers:	2	Diameter: 6.75 inches		

Tool Comments: Tool opened on bridge 7' off bottom - lost around 20' of mud - 6" surge blow

Tool Description	Length (ft)	Serial No.	Position	Depth (ft)	Accum. Lengths
------------------	-------------	------------	----------	------------	----------------

Change Over Sub	1.00			3858.00	
Shut In Tool	5.00			3863.00	
Hydraulic tool	5.00			3868.00	
Jars	5.00			3873.00	
Safety Joint	3.00			3876.00	
Packer	5.00			3881.00	29.00 Bottom Of Top Packer
Packer	5.00			3886.00	
Stubb	1.00			3887.00	
Recorder	0.00	6625	Inside	3887.00	
Recorder	0.00	8366	Outside	3887.00	
Perforations	14.00			3901.00	
Bullnose	3.00			3904.00	18.00 Bottom Packers & Anchor

**Total Tool Length: 47.00**





**TRILOBITE  
TESTING, INC**

# DRILL STEM TEST REPORT

## FLUID SUMMARY

Suemaaur Exploration & Production LLC

**26/6s/28w Sheridan KS**

539 N Carancahua STE 1100  
Corpus Christi, TX 78401

**Spresser #3-26**

Job Ticket: 63976

**DST#: 2**

ATTN: Bob Petersen

Test Start: 2017.01.24 @ 16:33:00

### Mud and Cushion Information

Mud Type: Gel Chem

Cushion Type:

Oil API:

deg API

Mud Weight: 9.00 lb/gal

Cushion Length:

ft

Water Salinity:

ppm

Viscosity: 57.00 sec/qt

Cushion Volume:

bbbl

Water Loss: 5.99 in<sup>3</sup>

Gas Cushion Type:

Resistivity: ohm.m

Gas Cushion Pressure:

psig

Salinity: 900.00 ppm

Filter Cake: 2.00 inches

### Recovery Information

Recovery Table

Length ft	Description	Volume bbl
215.00	OCM 86%m, 12%o, 2%g	1.312

Total Length: 215.00 ft      Total Volume: 1.312 bbl

Num Fluid Samples: 0

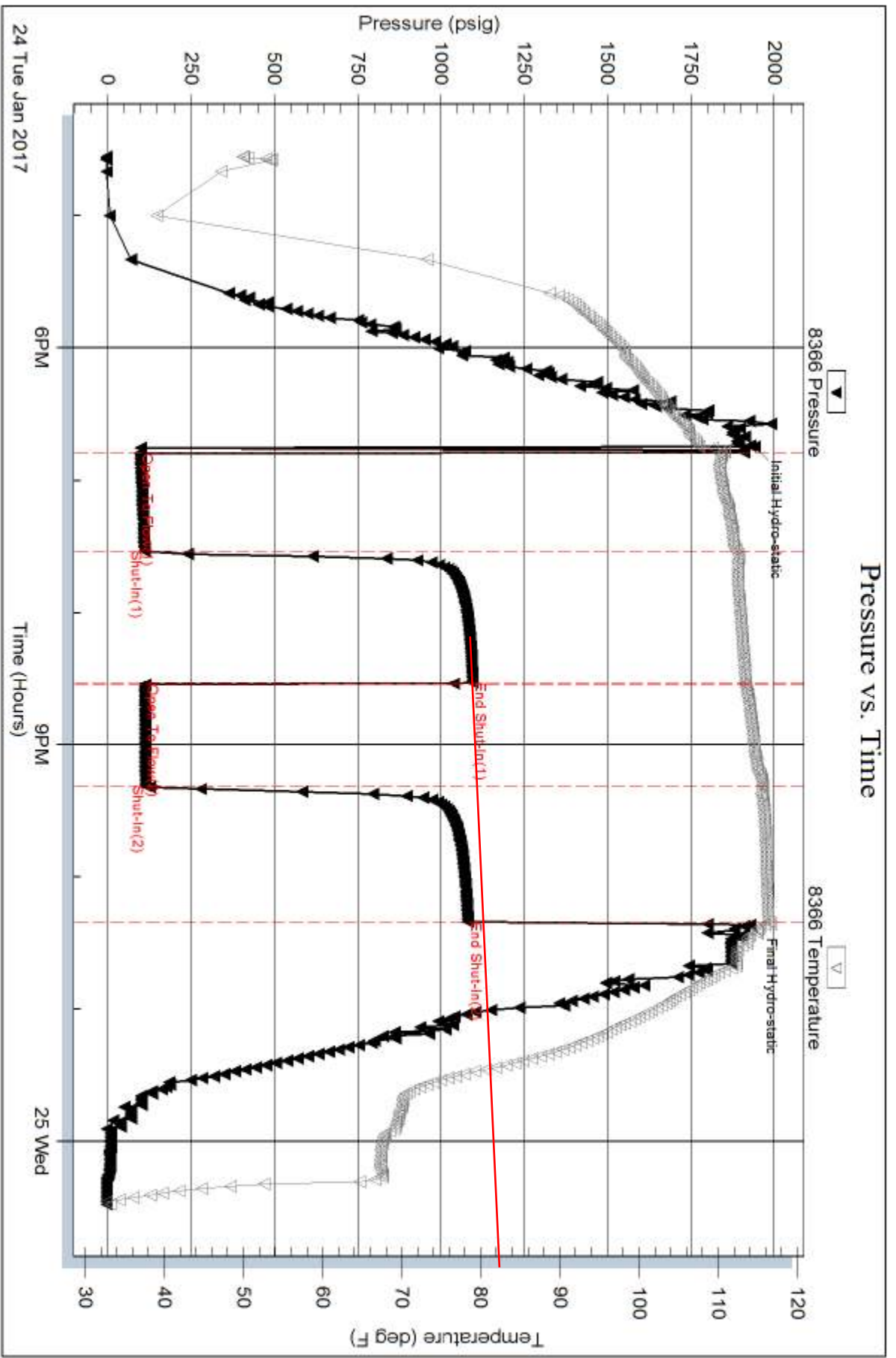
Num Gas Bombs: 0

Serial #:

Laboratory Name:

Laboratory Location:

Recovery Comments:







**TRILOBITE TESTING, INC.**

# DRILL STEM TEST REPORT

Suema Exploration & Production LLC

**26/6s/28w Sheridan KS**

539 N Carancahua STE 1100  
Corpus Christi, TX 78401

**Spresser #3-26**

Job Ticket: 63977

**DST#: 3**

ATTN: Bob Petersen

Test Start: 2017.01.25 @ 10:05:00

## GENERAL INFORMATION:

Formation: **LKC "H"**

Deviated: No Whipstock: ft (KB)

Time Tool Opened: 12:15:45

Time Test Ended: 19:09:30

Test Type: Conventional Bottom Hole (Reset)

Tester: James Winder

Unit No: 83

**Interval: 3935.00 ft (KB) To 3948.00 ft (KB) (TVD)**

Reference Elevations: 2651.00 ft (KB)

Total Depth: 3948.00 ft (KB) (TVD)

2646.00 ft (CF)

Hole Diameter: 7.88 inches Hole Condition: Fair

KB to GR/CF: 5.00 ft

**Serial #: 8366**

**Outside**

Press@RunDepth: 259.86 psig @ 3936.00 ft (KB)

Capacity: 8000.00 psig

Start Date: 2017.01.25

End Date: 2017.01.25

Last Calib.: 2017.01.25

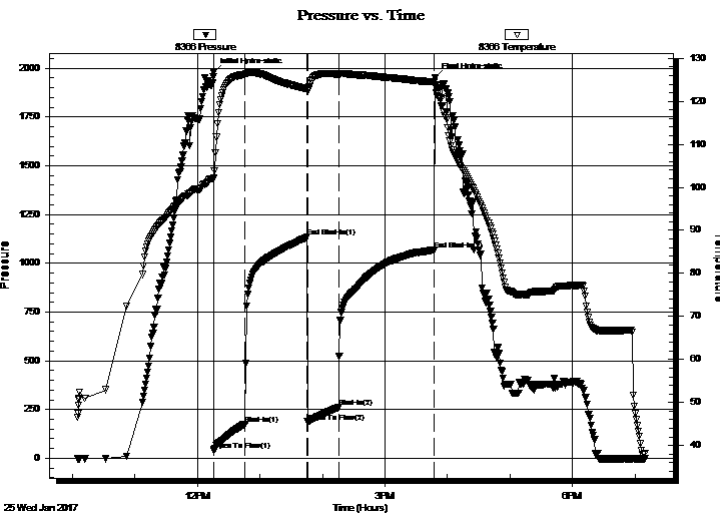
Start Time: 10:05:05

End Time: 19:09:30

Time On Btm: 2017.01.25 @ 12:15:30

Time Off Btm: 2017.01.25 @ 15:48:15

**TEST COMMENT:** 30 - IF: Blow built to BOB (11") at 3 1/4 min. (diesel in bucket)  
60 - IS: Blow back built to BOB at 43 min.  
30 - FF: Blow built to BOB at 7 min.  
90 - FS: Blow back built to BOB at 46 1/2 min.



## PRESSURE SUMMARY

Time (Min.)	Pressure (psig)	Temp (deg F)	Annotation
0	1978.48	102.29	Initial Hydro-static
1	40.55	101.98	Open To Flow (1)
31	175.66	126.28	Shut-In(1)
90	1133.47	122.95	End Shut-In(1)
91	186.92	122.67	Open To Flow (2)
121	259.86	126.19	Shut-In(2)
212	1068.14	124.48	End Shut-In(2)
213	1949.25	123.84	Final Hydro-static

## Recovery

Length (ft)	Description	Volume (bbl)
125.00	GOCM 66% m, 17% o, 17% g	0.61
570.00	REV out GO 87% o, 11% g, 2% m	7.43
0.00	GIP = 700'	0.00

\* Recovery from multiple tests

## Gas Rates

Choke (inches)	Pressure (psig)	Gas Rate (Mcf/d)





**TRILOBITE  
TESTING, INC.**

# DRILL STEM TEST REPORT

**TOOL DIAGRAM**

Suemaour Exploration & Production LLC

**26/6s/28w Sheridan KS**

539 N Carancahua STE 1100  
Corpus Christi, TX 78401

**Spresser #3-26**

Job Ticket: 63977

**DST#: 3**

ATTN: Bob Petersen

Test Start: 2017.01.25 @ 10:05:00

## Tool Information

Drill Pipe:	Length: 3737.00 ft	Diameter: 3.80 inches	Volume: 52.42 bbl	Tool Weight: 2500.00 lb
Heavy Wt. Pipe:	Length: 0.00 ft	Diameter: 2.75 inches	Volume: 0.00 bbl	Weight set on Packer: 25000.00 lb
Drill Collar:	Length: 187.00 ft	Diameter: 2.25 inches	Volume: 0.92 bbl	Weight to Pull Loose: 56000.00 lb
			<u>Total Volume: 53.34 bbl</u>	Tool Chased 0.00 ft
Drill Pipe Above KB:	18.00 ft			String Weight: Initial 54000.00 lb
Depth to Top Packer:	3935.00 ft			Final 56000.00 lb
Depth to Bottom Packer:	ft			
Interval between Packers:	13.00 ft			
Tool Length:	42.00 ft			
Number of Packers:	2	Diameter: 6.75 inches		

Tool Comments:

## Tool Description

Tool Description	Length (ft)	Serial No.	Position	Depth (ft)	Accum. Lengths
Change Over Sub	1.00			3907.00	
Shut In Tool	5.00			3912.00	
Hydraulic tool	5.00			3917.00	
Jars	5.00			3922.00	
Safety Joint	3.00			3925.00	
Packer	5.00			3930.00	29.00 Bottom Of Top Packer
Packer	5.00			3935.00	
Packer - Shale	0.00			3935.00	
Stubb	1.00			3936.00	
Recorder	0.00	6625	Inside	3936.00	
Recorder	0.00	8366	Outside	3936.00	
Perforations	9.00			3945.00	
Bullnose	3.00			3948.00	13.00 Bottom Packers & Anchor

**Total Tool Length: 42.00**



**TRILOBITE  
TESTING, INC**

# DRILL STEM TEST REPORT

**FLUID SUMMARY**

Suemaour Exploration & Production LLC

**26/6s/28w Sheridan KS**

539 N Carancahua STE 1100  
Corpus Christi, TX 78401

**Spresser #3-26**

Job Ticket: 63977

**DST#: 3**

ATTN: Bob Petersen

Test Start: 2017.01.25 @ 10:05:00

## Mud and Cushion Information

Mud Type: Gel Chem

Cushion Type:

Oil API:

deg API

Mud Weight: 9.00 lb/gal

Cushion Length:

ft

Water Salinity:

ppm

Viscosity: 53.00 sec/qt

Cushion Volume:

bbbl

Water Loss: 5.60 in<sup>3</sup>

Gas Cushion Type:

Resistivity: ohm.m

Gas Cushion Pressure:

psig

Salinity: 900.00 ppm

Filter Cake: 2.00 inches

## Recovery Information

Recovery Table

Length ft	Description	Volume bbl
125.00	GOCM 66% <i>m</i> , 17% <i>o</i> , 17% <i>g</i>	0.615
570.00	REV out GO 87% <i>o</i> , 11% <i>g</i> , 2% <i>m</i>	7.431
0.00	GIP = 700'	0.000

Total Length: 695.00 ft      Total Volume: 8.046 bbl

Num Fluid Samples: 0

Num Gas Bombs: 0

Serial #:

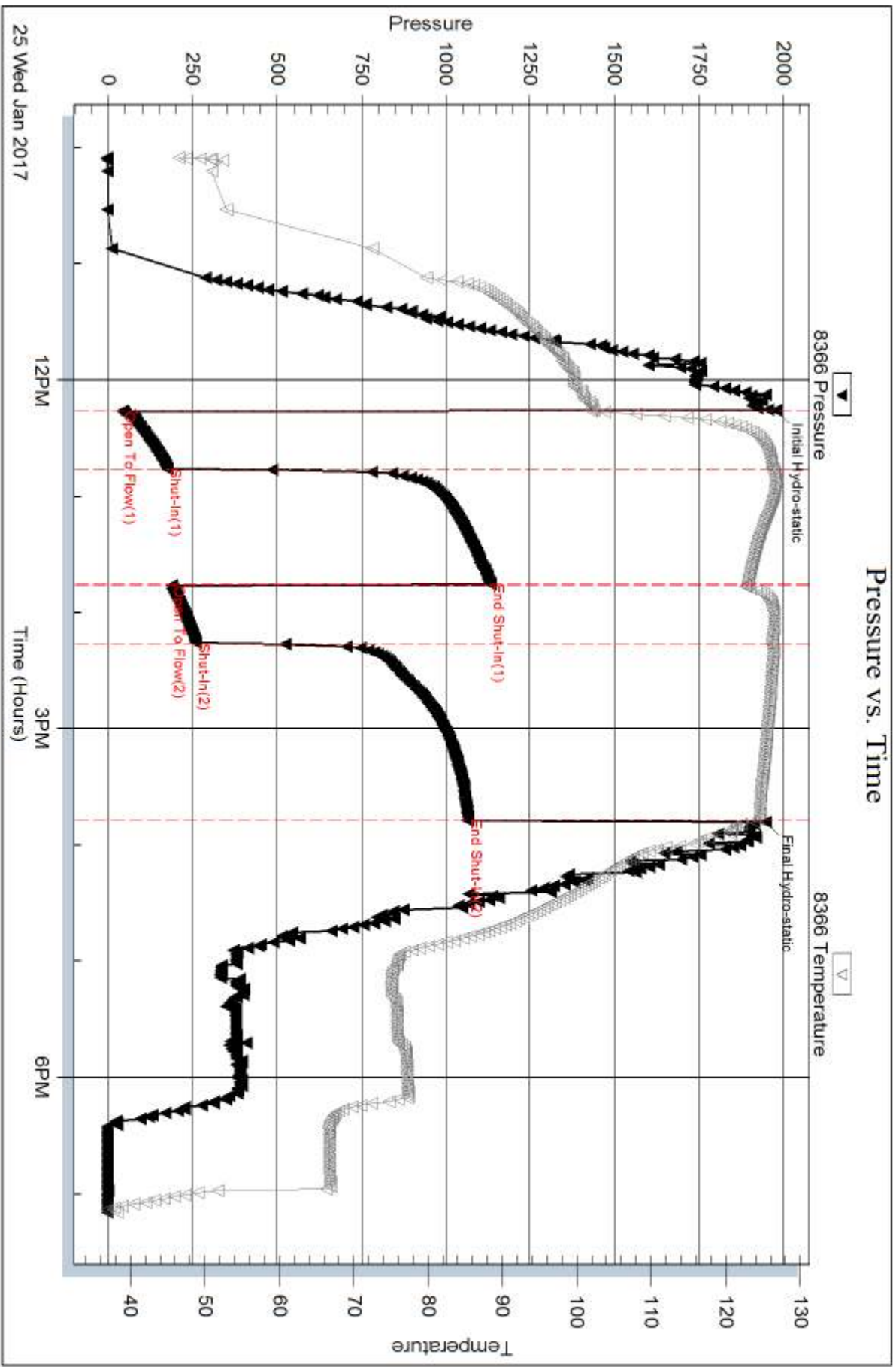
Laboratory Name:

Laboratory Location:

Recovery Comments: Gravity = 31 api @ 26 deg F

Corrected Gravity = 34.4 api

Reversed out 570' oil samples every 3 min. for 15 min averaged the 5 together for the recovery





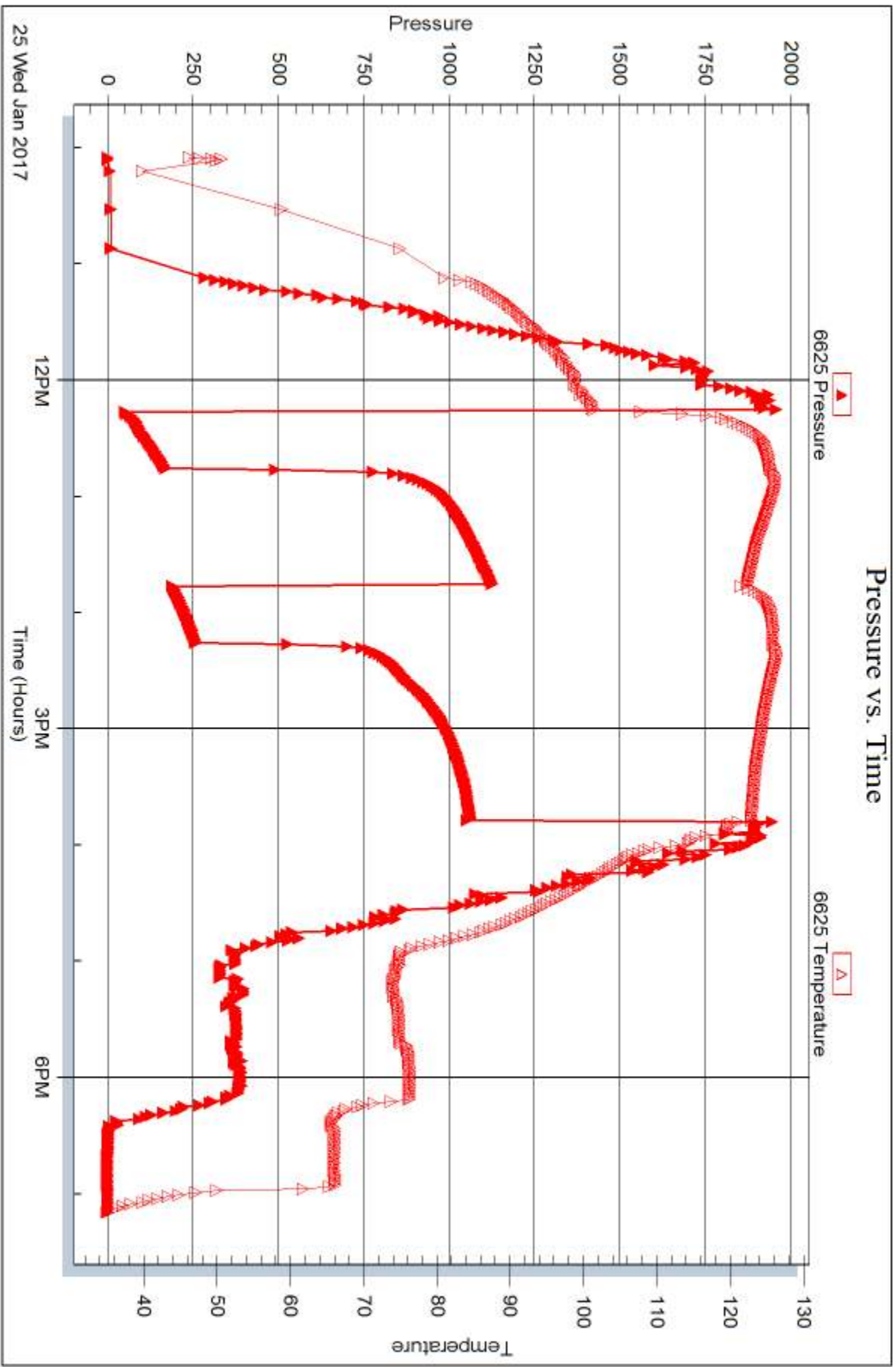
Serial #: 6625

Inside

Suenaux Exploration & Production LLC

Spresser #3-26

DST Test Number: 3





**TRILOBITE TESTING, INC.**

# DRILL STEM TEST REPORT

Suemaour Exploration & Production LLC

**26/6s/28w Sheridan KS**

539 N Carancahua STE 1100  
Corpus Christi, TX 78401

**Spresser #3-26**

Job Ticket: 63978

**DST#: 4**

ATTN: Bob Petersen

Test Start: 2017.01.27 @ 06:42:00

## GENERAL INFORMATION:

Formation: **LKC "D"**

Deviated: No Whipstock: ft (KB)

Time Tool Opened: 08:55:15

Time Test Ended: 13:29:45

Test Type: Conventional Straddle (Reset)

Tester: James Winder

Unit No: 83

**Interval: 3842.00 ft (KB) To 3854.00 ft (KB) (TVD)**

Reference Elevations: 2651.00 ft (KB)

Total Depth: 4197.00 ft (KB) (TVD)

2646.00 ft (CF)

Hole Diameter: 7.88 inches Hole Condition: Fair

KB to GR/CF: 5.00 ft

**Serial #: 8366 Outside**

Press@RunDepth: 111.42 psig @ 3843.00 ft (KB)

Capacity: 8000.00 psig

Start Date: 2017.01.27 End Date: 2017.01.27

Last Calib.: 2017.01.27

Start Time: 06:42:05 End Time: 13:29:44

Time On Btm: 2017.01.27 @ 08:54:45

Time Off Btm: 2017.01.27 @ 11:27:30

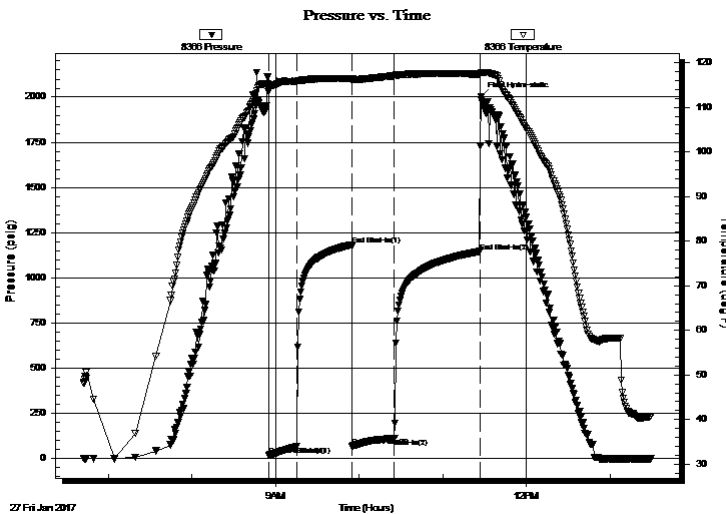
**TEST COMMENT:** 20 - IF: Blow built to 6 1/2" (Diesel in bucket)

40 - IS: No blow back

30 - FF: Blow built to 6 1/4"

60 - FS: No blow back

## PRESSURE SUMMARY



Time (Min.)	Pressure (psig)	Temp (deg F)	Annotation
0	2029.94	115.15	Initial Hydro-static
1	17.99	114.72	Open To Flow (1)
21	64.88	115.80	Shut-In(1)
60	1182.19	116.48	End Shut-In(1)
61	66.81	115.96	Open To Flow (2)
91	111.42	117.05	Shut-In(2)
152	1145.67	117.46	End Shut-In(2)
153	2000.11	117.80	Final Hydro-static

## Recovery

Length (ft)	Description	Volume (bbl)
187.00	MCW 85%w, 15%m	0.92
31.00	Mud 100%	0.43

## Gas Rates

	Choke (inches)	Pressure (psig)	Gas Rate (Mcf/d)

\* Recovery from multiple tests







**TRILOBITE  
TESTING, INC**

# DRILL STEM TEST REPORT

**TOOL DIAGRAM**

Suemaour Exploration & Production LLC

**26/6s/28w Sheridan KS**

539 N Carancahua STE 1100  
Corpus Christi, TX 78401

**Spresser #3-26**

Job Ticket: 63978

**DST#: 4**

ATTN: Bob Petersen

Test Start: 2017.01.27 @ 06:42:00

## Tool Information

Drill Pipe:	Length: 3643.00 ft	Diameter: 3.80 inches	Volume: 51.10 bbl	Tool Weight: 2500.00 lb
Heavy Wt. Pipe:	Length: 0.00 ft	Diameter: 2.75 inches	Volume: 0.00 bbl	Weight set on Packer: 25000.00 lb
Drill Collar:	Length: 187.00 ft	Diameter: 2.25 inches	Volume: 0.92 bbl	Weight to Pull Loose: 62000.00 lb
			<u>Total Volume: 52.02 bbl</u>	Tool Chased 0.00 ft
Drill Pipe Above KB:	17.00 ft			String Weight: Initial 58000.00 lb
Depth to Top Packer:	3842.00 ft			Final 59000.00 lb
Depth to Bottom Packer:	3854.00 ft			
Interval between Packers:	12.00 ft			
Tool Length:	384.00 ft			
Number of Packers:	3	Diameter: 6.75 inches		

Tool Comments:

## Tool Description

**Length (ft) Serial No. Position Depth (ft) Accum. Lengths**

Change Over Sub	1.00			3814.00	
Shut In Tool	5.00			3819.00	
Hydraulic tool	5.00			3824.00	
Jars	5.00			3829.00	
Safety Joint	3.00			3832.00	
Packer	5.00			3837.00	29.00 Bottom Of Top Packer
Packer	5.00			3842.00	
Stubb	1.00			3843.00	
Recorder	0.00	6625	Inside	3843.00	
Recorder	0.00	8366	Outside	3843.00	
Perforations	6.00			3849.00	
Blank Off Sub	1.00			3850.00	
Blank spacing	4.00			3854.00	12.00 Tool Interval
Packer	0.00			3854.00	
Packer - Shale	0.00			3854.00	
Stubb	1.00			3855.00	
Recorder	0.00	8167	Below	3855.00	
Perforations	21.00			3876.00	
Drill Pipe	318.00			4194.00	
Bullnose	3.00			4197.00	343.00 Bottom Packers & Anchor

**Total Tool Length: 384.00**



**TRILOBITE  
TESTING, INC**

# DRILL STEM TEST REPORT

**FLUID SUMMARY**

Suemaaur Exploration & Production LLC

**26/6s/28w Sheridan KS**

539 N Carancahua STE 1100  
Corpus Christi, TX 78401

**Spresser #3-26**

Job Ticket: 63978

**DST#: 4**

ATTN: Bob Petersen

Test Start: 2017.01.27 @ 06:42:00

## Mud and Cushion Information

Mud Type: Gel Chem

Cushion Type:

Oil API:

deg API

Mud Weight: 9.00 lb/gal

Cushion Length:

ft

Water Salinity:

9000 ppm

Viscosity: 54.00 sec/qt

Cushion Volume:

bbbl

Water Loss: 6.00 in<sup>3</sup>

Gas Cushion Type:

Resistivity: ohm.m

Gas Cushion Pressure:

psig

Salinity: 900.00 ppm

Filter Cake: 2.00 inches

## Recovery Information

Recovery Table

Length ft	Description	Volume bbbl
187.00	MCW 85%w , 15%m	0.920
31.00	Mud 100%	0.435

Total Length: 218.00 ft      Total Volume: 1.355 bbl

Num Fluid Samples: 0

Num Gas Bombs: 0

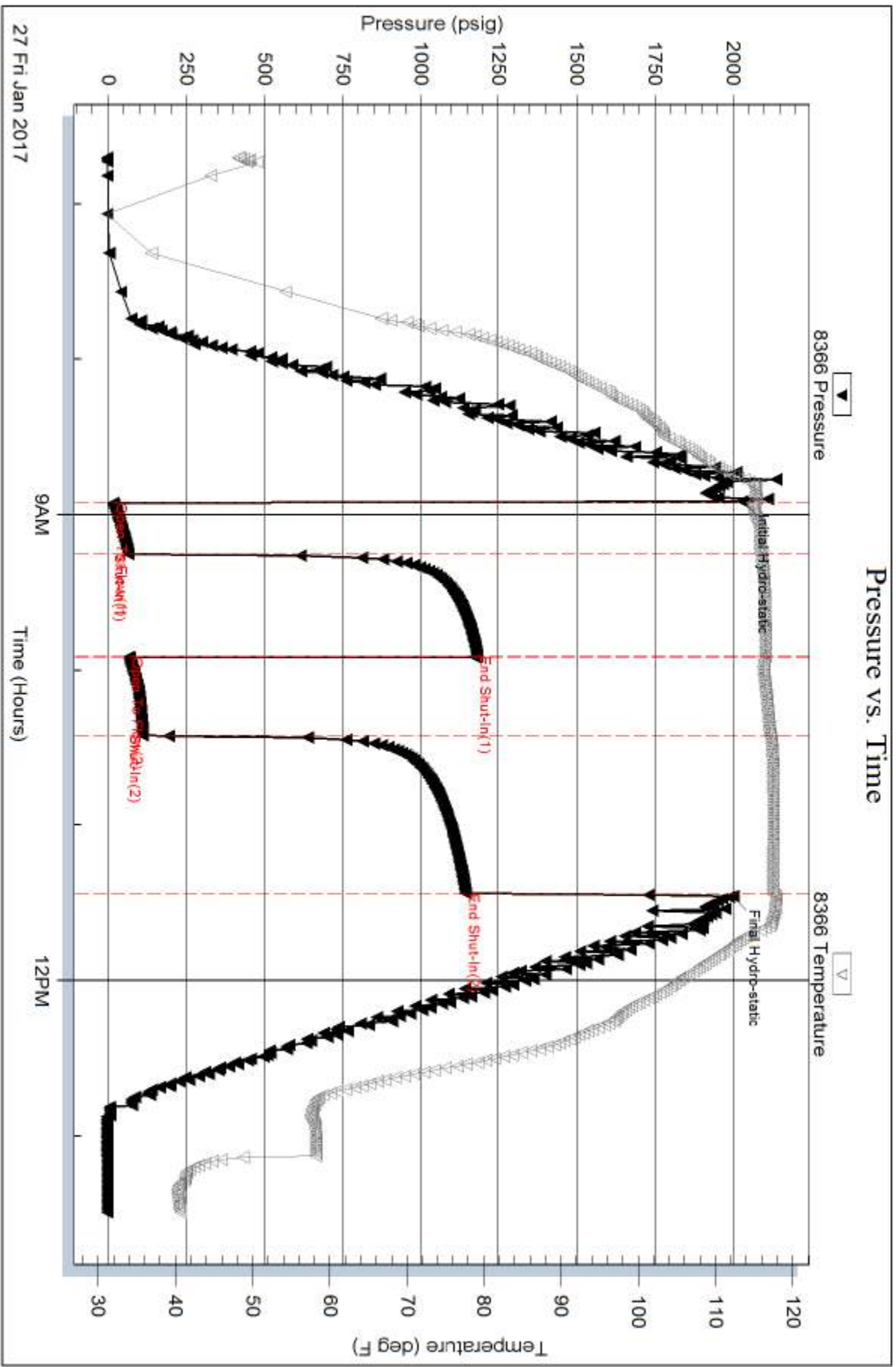
Serial #:

Laboratory Name:

Laboratory Location:

Recovery Comments: RW = .872 ohms @ 53.6 deg F

Chlorides = 9,000 ppm



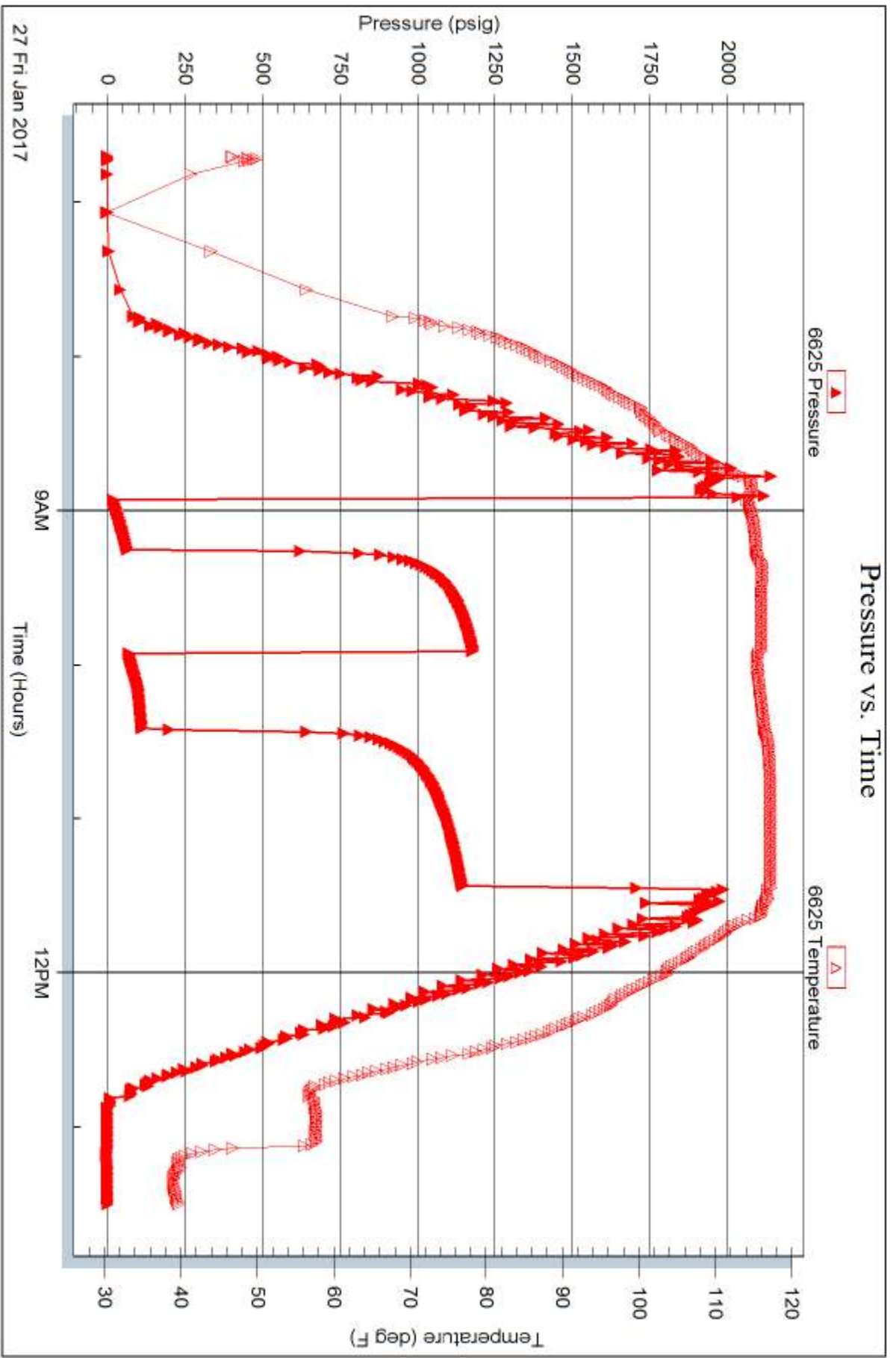
Serial #: 6625

Inside

Suenaur Exploration & Production LLC

Spresser #3-26

DST Test Number: 4



Trilobite Testing, Inc

Ref. No: 63978

Printed: 2017.01.27 @ 14:43:32



