



**TRILOBITE TESTING, INC.**

# DRILL STEM TEST REPORT

Berexco, LLC  
 2020 N. Bramblewood  
 Wichita, KS 67206  
 ATTN: Bryan Bynog

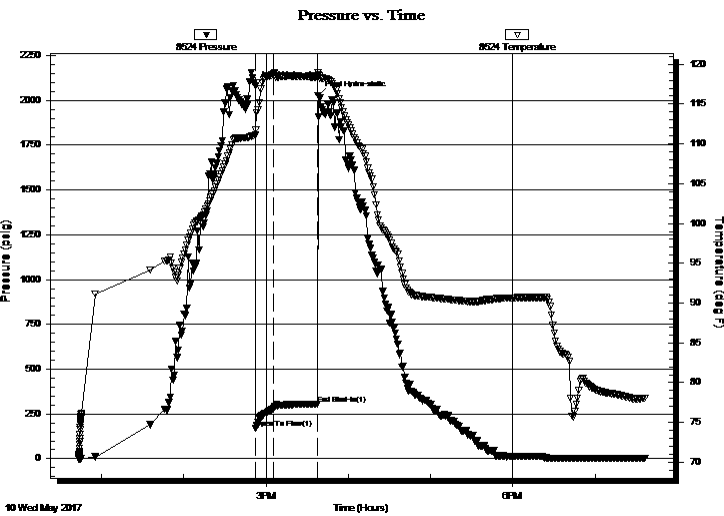
**12-17S-21W Ness, KS**  
**Seltmann #1-12**  
 Job Ticket: 63186 **DST#: 1**  
 Test Start: 2017.05.10 @ 12:43:20

## GENERAL INFORMATION:

Formation: **Cherokee A**  
 Deviated: No Whipstock: ft (KB)  
 Test Type: Conventional Bottom Hole (Initial)  
 Time Tool Opened: 14:52:41 Tester: Brannan Lonsdale  
 Time Test Ended: 19:36:56 Unit No: 73  
 Interval: **4032.00 ft (KB) To 4044.00 ft (KB) (TVD)** Reference Elevations: 2177.00 ft (KB)  
 Total Depth: 4044.00 ft (KB) (TVD) 2169.00 ft (CF)  
 Hole Diameter: 7.88 inches Hole Condition: Fair KB to GR/CF: 8.00 ft

**Serial #: 8524 Outside**  
 Press@RunDepth: 280.78 psig @ 4041.00 ft (KB) Capacity: 8000.00 psig  
 Start Date: 2017.05.10 End Date: 2017.05.10 Last Calib.: 2017.05.10  
 Start Time: 12:43:21 End Time: 19:36:56 Time On Btm: 2017.05.10 @ 14:52:11  
 Time Off Btm: 2017.05.10 @ 15:37:56

TEST COMMENT: 15- IF- BOB 30secs  
 30- IS- BOB 11mins Pulled tool



## PRESSURE SUMMARY

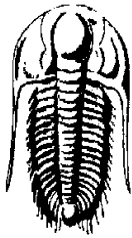
Time (Min.)	Pressure (psig)	Temp (deg F)	Annotation
0	2079.88	111.09	Initial Hydro-static
1	169.35	111.74	Open To Flow (1)
14	280.78	118.86	Shut-In(1)
46	302.85	118.35	End Shut-In(1)
46	2027.06	118.97	Final Hydro-static

## Recovery

Length (ft)	Description	Volume (bbl)
117.00	GOCMW, 15%G 15%O 55%W 15%M	0.58
471.00	GWMCO, 15%G 65%O 5%W 15%M	2.89
78.00	CGO, 10%G 90%O	1.11
0.00	791' GIP	0.00

## Gas Rates

	Choke (inches)	Pressure (psig)	Gas Rate (Mcf/d)



**TRILOBITE TESTING, INC.**

# DRILL STEM TEST REPORT

Berexco, LLC

12-17S-21W Ness, KS

2020 N. Bramblewood  
Wichita, KS 67206

Seltmann #1-12

Job Ticket: 63186

DST#: 1

ATTN: Bryan Bynog

Test Start: 2017.05.10 @ 12:43:20

## GENERAL INFORMATION:

Formation: **Cherokee A**

Deviated: No Whipstock: ft (KB)

Time Tool Opened: 14:52:41

Time Test Ended: 19:36:56

Test Type: Conventional Bottom Hole (Initial)

Tester: Brannan Lonsdale

Unit No: 73

Interval: **4032.00 ft (KB) To 4044.00 ft (KB) (TVD)**

Total Depth: 4044.00 ft (KB) (TVD)

Hole Diameter: 7.88 inches Hole Condition: Fair

Reference Elevations: 2177.00 ft (KB)

2169.00 ft (CF)

KB to GR/CF: 8.00 ft

Serial #: **6838** Inside

Press@RunDepth: psig @ 4041.00 ft (KB)

Start Date: 2017.05.10

End Date:

2017.05.10

Start Time: 12:43:58

End Time:

19:37:33

Capacity: 8000.00 psig

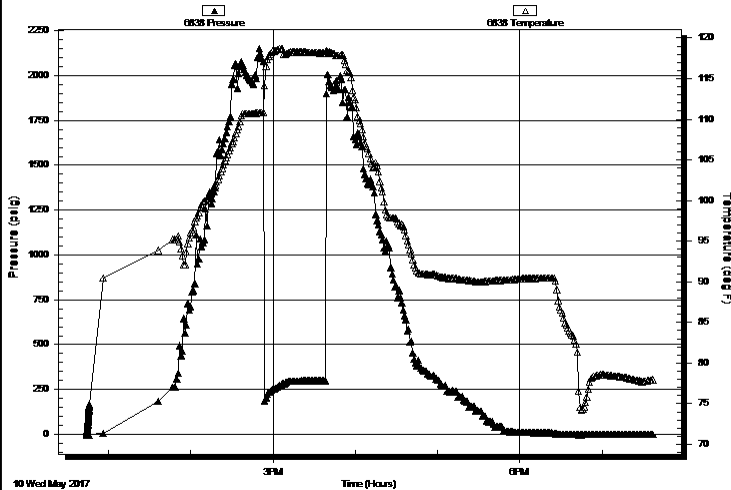
Last Calib.: 2017.05.10

Time On Btm:

Time Off Btm:

TEST COMMENT: 15- IF- BOB 30secs  
30- IS- BOB 11mins Pulled tool

Pressure vs. Time



PRESSURE SUMMARY

Time (Min.)	Pressure (psig)	Temp (deg F)	Annotation

Recovery

Length (ft)	Description	Volume (bbl)
117.00	GOCMW, 15%G 15%O 55%W 15%M	0.58
471.00	GWMCO, 15%G 65%O 5%W 15%M	2.89
78.00	CGO, 10%G 90%O	1.11
0.00	791' GIP	0.00

Gas Rates

Choke (inches)	Pressure (psig)	Gas Rate (Mcf/d)



**TRILOBITE  
TESTING, INC.**

# DRILL STEM TEST REPORT

**FLUID SUMMARY**

Berexco, LLC

**12-17S-21W Ness, KS**

2020 N. Bramblewood  
Wichita, KS 67206

**Seltmann #1-12**

Job Ticket: 63186

**DST#: 1**

ATTN: Bryan Bynog

Test Start: 2017.05.10 @ 12:43:20

## Mud and Cushion Information

Mud Type: Gel Chem

Cushion Type:

Oil API:

33 deg API

Mud Weight: 9.00 lb/gal

Cushion Length:

ft

Water Salinity:

27000 ppm

Viscosity: 56.00 sec/qt

Cushion Volume:

bbbl

Water Loss: 9.19 in<sup>3</sup>

Gas Cushion Type:

Resistivity: ohm.m

Gas Cushion Pressure:

psig

Salinity: 5000.00 ppm

Filter Cake: inches

## Recovery Information

Recovery Table

Length ft	Description	Volume bbbl
117.00	GOCMW, 15%G 15%O 55%W 15%M	0.575
471.00	GWMCO, 15%G 65%O 5%W 15%M	2.890
78.00	CGO, 10%G 90%O	1.106
0.00	791' GIP	0.000

Total Length: 666.00 ft      Total Volume: 4.571 bbl

Num Fluid Samples: 0

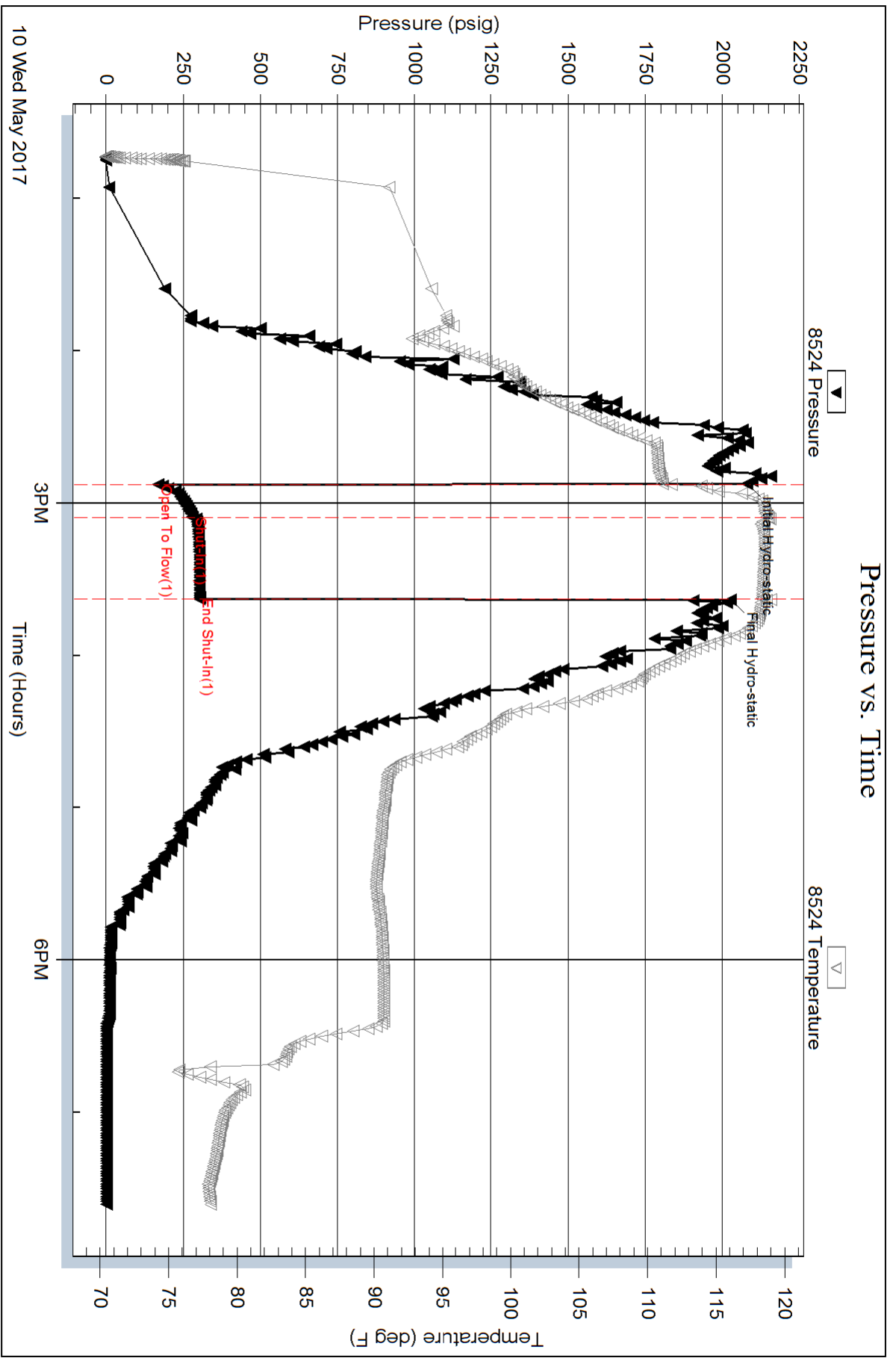
Num Gas Bombs: 0

Serial #:

Laboratory Name:

Laboratory Location:

Recovery Comments: RW: .22@76deg



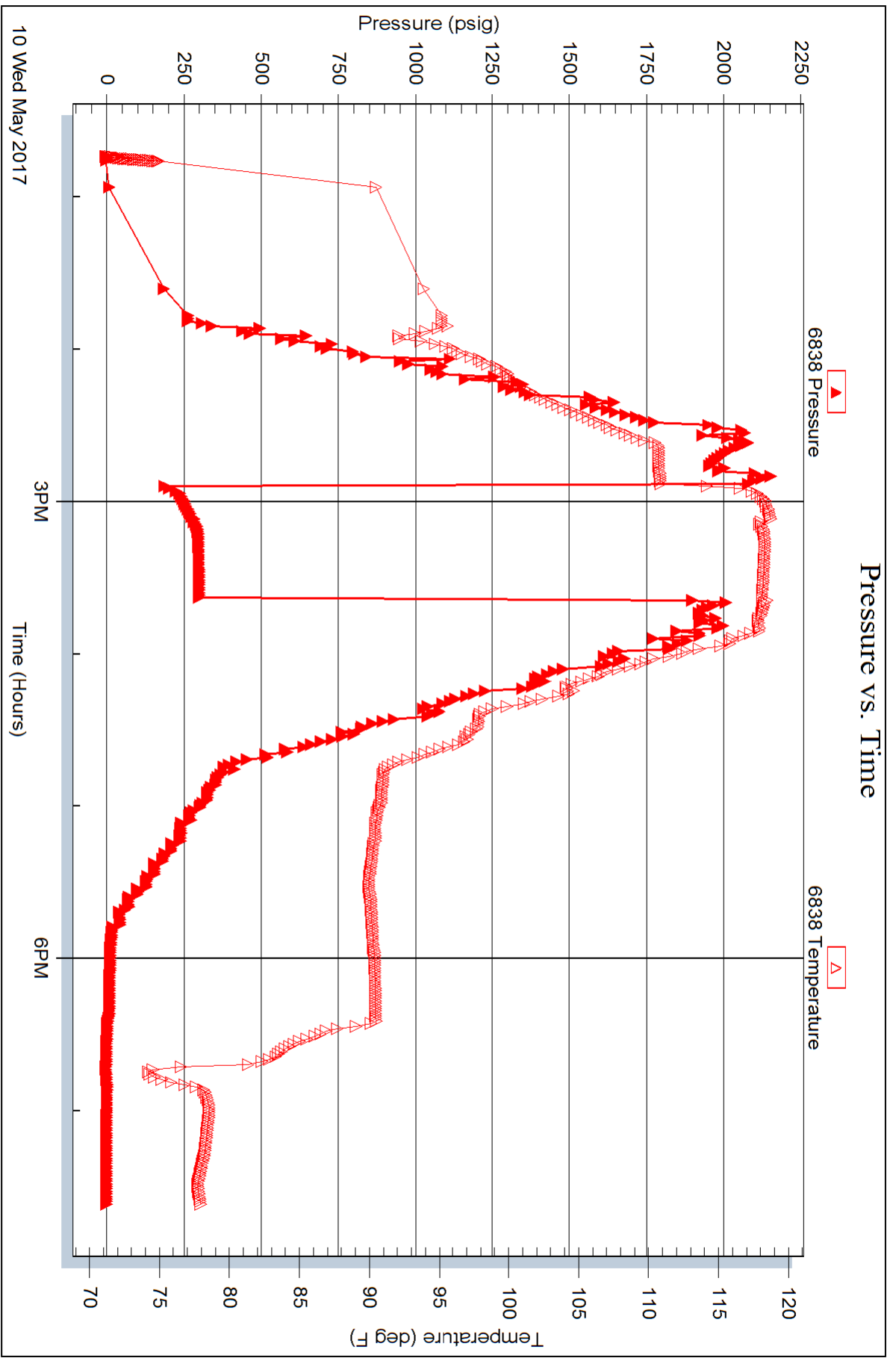
Serial #: 6838

Inside

Berexco, LLC

Seltrann #1-12

DST Test Number: 1



Trilobite Testing, Inc

Ref. No: 63186

Printed: 2017.05.10 @ 21:30:50