



DIAMOND TESTING
P.O. Box 157
HOISINGTON, KANSAS 67544
(800) 542-7313
DRILL-STEM TEST TICKET
FILE: SWOB1DST1

TIME ON: 23:35 4/16
TIME OFF: 06:06 4/17

Company Black Stone Petroleum LLC Lease & Well No. SWOB #1
Contractor Landmark Rig #6 Charge to Black Stone Petroleum LLC
Elevation 1973' KB Formation Reagan Effective Pay _____ Ft. Ticket No. F476
Date 4/17/17 Sec. 26 Twp. 18 S Range 16 W County Rush State KANSAS
Test Approved By Chris Leiker Diamond Representative Jake Fahrenbruch

Formation Test No. 1 Interval Tested from 3577 ft. to 3593 ft. Total Depth 3593 ft.
Packer Depth 3572 8" ft. Size 6 3/4 in. Packer depth ----- ft. Size 6 3/4 in.
Packer Depth 3577 8" ft. Size 6 3/4 in. Packer depth ----- ft. Size 6 3/4 in.
Depth of Selective Zone Set -----

Top Recorder Depth (Inside) 3579 ft. Recorder Number 5951 Cap. 5000 P.S.I.
Bottom Recorder Depth (Outside) 3580 ft. Recorder Number 5586 Cap. 5000 P.S.I.
Below Straddle Recorder Depth ----- ft. Recorder Number ----- Cap. ----- P.S.I.

Mud Type CHEMICAL Viscosity 38 Drill Collar Length 87 ft. I.D. 2 1/4 in.
Weight 9.1 Water Loss 6.4 cc. Weight Pipe Length 0 ft. I.D. 2 7/8 in.
Chlorides 47,000 P.P.M. Drill Pipe Length 3,462 ft. I.D. 3 1/2 in.
Jars: Make STERLING Serial Number 5 J,SJ, 8" pkrs Test Tool Length 28 ft. Tool Size 3 1/2-IF in.
Did Well Flow? ----- Reversed Out ----- Anchor Length 16 ft. Size 4 1/2-FH in.
Main Hole Size 7 7/8 Tool Joint Size 4 1/2 XH in. Surface Choke Size 1 in. Bottom Choke Size 5/8 in.

Blow: 1st Open: Slow building blow, increased to 5.25"
2nd Open: _____

Recovered 160 ft. of WM w/TR oil specks < oil, >44 wtr, % mud
Recovered _____ ft. of _____
Recovered _____ ft. of GAS IN PIPE: ~100'
Recovered _____ ft. of _____

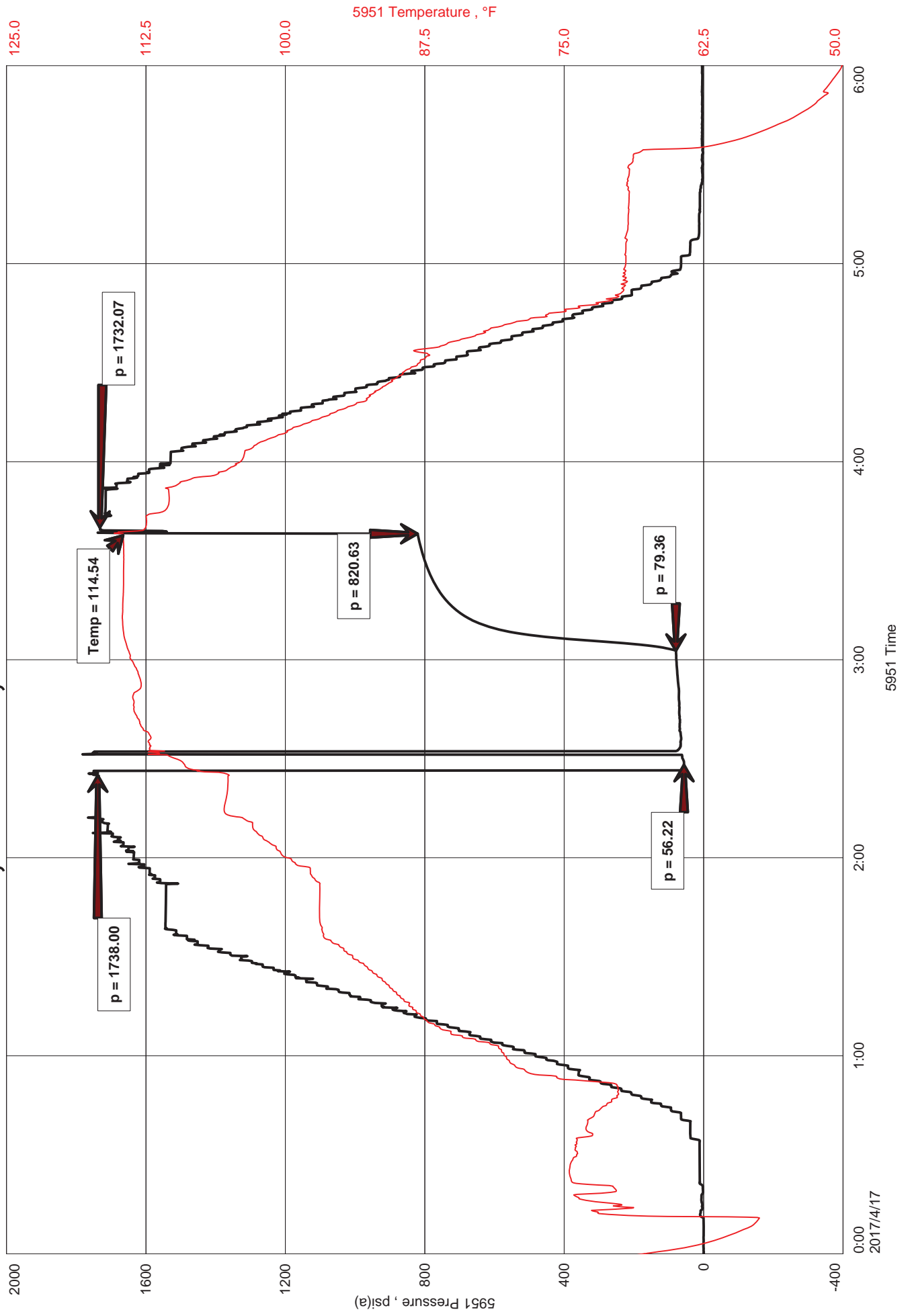
Recovered _____ ft. of _____	Price Job
Recovered _____ ft. of _____	Other Charges
Remarks: <u>CHLORIDES: 93,000 PPM</u>	Insurance
<u>RW: .12 ohm @ 50 F</u>	
<u>PH: 7.0</u>	Total

Time Set Packer(s) 02:35 A.M. P.M. Time Started Off Bottom 03:35 A.M. P.M. Maximum Temperature 115 F

Initial Hydrostatic Pressure..... (A) 1738 P.S.I.
Initial Flow Period..... Minutes 30 (B) 56 P.S.I. to (C) 79 P.S.I.
Initial Closed In Period..... Minutes 30 (D) 821 P.S.I.
Final Flow Period..... Minutes ----- (E) ----- P.S.I. to (F) ----- P.S.I.
Final Closed In Period..... Minutes ----- (G) ----- P.S.I.
Final Hydrostatic Pressure..... (H) 1732 P.S.I.

Diamond Testing shall not be liable for damages of any kind to the property or personnel of the one for whom a test is made or for any loss suffered or sustained, directly or indirectly, through the use of its equipment, or its statement or opinion concerning the result of any test. Tools lost or damaged in the hole shall be paid for at cost by the party for whom the test is made.

DST #1, SWOB #1, REAGAN 3577'-3593'





DIAMOND TESTING
 P.O. Box 157
 HOISINGTON, KANSAS 67544
 (800) 542-7313
DRILL-STEM TEST TICKET
 FILE: SWOB1DST1

ON LOCATION: 16:15 4/16
 START RECORDERS: 23:35
 STOP RECORDERS: 06:06 4/17

Company BLACK STONE PETROLEUM LLC Lease & Well No. SWOB #1
 Contractor LANDMARK REG # 6 Charge to BLACK STONE PETROLEUM LLC
 Elevation 1973' KB Formation REAGAN Effective Pay _____ Ft. Ticket No. F476
 Date 4/17/17 Sec. 26 Twp. 18S Range 16W County RUSH State KS
 Test Approved By CHRIS LEIKER Diamond Representative JAKE FAHRENBRUCH

Formation Test No. 1 Interval Tested from 3577 ft. to 3593 ft. Total Depth 3593 ft.
 Packer Depth 3572 ft. Size 6 3/4 in. Packer depth _____ ft. Size 6 3/4 in.
 Packer Depth 3577 ft. Size 6 3/4 in. Packer depth _____ ft. Size 6 3/4 in.

Depth of Selective Zone Set _____
 Top Recorder Depth (Inside) 3579 ft. Recorder Number 5591 Cap. 5000 P.S.I.
 Bottom Recorder Depth (Outside) 3580 ft. Recorder Number 5580 Cap. 5000 P.S.I.
 Below Straddle Recorder Depth _____ ft. Recorder Number _____ Cap. _____ P.S.I.

Mud Type CHEMICAL Viscosity 38 Drill Collar Length 87 ft. I.D. 2 1/4 in.
 Weight 9.1 Water Loss 6.4 cc. Weight Pipe Length _____ ft. I.D. 2 7/8 in.
 Chlorides 47,000 P.P.M. Drill Pipe Length 3462 ft. I.D. 3 1/2 in.
 Jars: Make STERLING Serial Number #5 JJS 8" PKRS Test Tool Length 28 ft. Tool Size 3 1/2-IF in.
 Did Well Flow? — Reversed Out — Anchor Length 16 ft. Size 4 1/2-FH in.
 Main Hole Size 7 7/8 Tool Joint Size 4 1/2 XH in. Surface Choke Size 1 in. Bottom Choke Size 5/8 in.

Blow: 1st Open: SLOW BUILDING BLOW, INCREASED TO 5 1/4"
 2nd Open: .

Recovered 160 ft. of WM w/TR OIL SPEKS 51" oil, 244" WTR, 55" mud

Recovered _____ ft. of _____

Recovered _____ ft. of _____

Recovered _____ ft. of _____

Recovered _____ ft. of GAS IN PIPE: ≈ 100' Price Job 4 3/4 HR STANDBY TIME
 Other Charges _____

Remarks: CHLORIDES: 93,000 PPM JJS 8" PKRS
RW: .12 Ω @ 50°F 50 MRT (HOLES)
PH: 7.0 Total _____

Time Set Packer(s) 02:35 A.M. P.M. Time Started Off Bottom 03:35 A.M. P.M. Maximum Temperature 115°F

Initial Hydrostatic Pressure..... (A) 1738 P.S.I.

Initial Flow Period..... Minutes 30 (B) 56 P.S.I. to (C) 79 P.S.I.

Initial Closed In Period..... Minutes 30 (D) 821 P.S.I.

Final Flow Period..... Minutes _____ (E) _____ P.S.I. to (F) _____ P.S.I.

Final Closed In Period..... Minutes _____ (G) _____ P.S.I. Thanks!

Final Hydrostatic Pressure..... (H) 1732 P.S.I. Jake Fahrenbruch

Diamond Testing shall not be liable for damages of any kind to the property or personnel of the one for whom a test is made or for any loss suffered or sustained, directly or indirectly, through the use of its equipment, or its statement or opinion concerning the result of any test. Tools lost or damaged in the hole shall be paid for at cost by the party for whom the test is made.

DIAMOND TESTING GENERAL REPORT

Jake Fahrenbruch, Tester

Cell: (620) 282-8977 / Office: (800) 542-7313



TEST INFORMATION

Well Name	SWOB #1
Company Name	Black Stone Petroleum LLC
Formation	DST #1, Reagan 3577'-3593'
Test Type	Bottom-Hole w/J,SJ, 8" Pkrs
Surface Location	Sec 26-18s-16w-Rush Co.-KS
KB Elevation (SL)	1973.000
Gauge Name	5951
Start Test Date	2017/04/14
Start Test Time	23:35:00
Final Test Date	2017/04/17
Final Test Time	06:06:00
Job Number	F476
Contact	Chris Leiker
Site Contact	Bob Bayer

TEST RESULTS

Initial flow, slow building blow, increased to 5.25".
No final flow.

Recovered 160' of WM w/TR oil specks. <1% oil, >44% wtr, 55% mud.
Gas In Pipe: ~100'

Chlorides: 93,000 PPM
RW: .12 ohm @ 50 F
PH: 7.0

DST #1, SWOB #1, REAGAN 3577'-3593'

