



**DIAMOND TESTING**  
P.O. Box 157  
**HOISINGTON, KANSAS 67544**  
(800) 542-7313  
**DRILL-STEM TEST TICKET**  
FILE: SWOB1DST2

TIME ON: 13:35  
TIME OFF: 20:03

Company Black Stone Petroleum LLC Lease & Well No. SWOB #1  
Contractor Landmark Rig #6 Charge to Black Stone Petroleum LLC  
Elevation 1973' KB Formation Reagan Effective Pay \_\_\_\_\_ Ft. Ticket No. F477  
Date 4/17/17 Sec. 26 Twp. \_\_\_\_\_ 18 S Range \_\_\_\_\_ 16 W County Rush State KANSAS  
Test Approved By Chris Leiker Diamond Representative Jake Fahrenbruch

Formation Test No. 2 Interval Tested from 3577 ft. to 3619 ft. Total Depth 3619 ft.  
Packer Depth 3572 8" ft. Size 6 3/4 in. Packer depth \_\_\_\_\_ ft. Size 6 3/4 in.  
Packer Depth 3577 8" ft. Size 6 3/4 in. Packer depth \_\_\_\_\_ ft. Size 6 3/4 in.  
Depth of Selective Zone Set \_\_\_\_\_

Top Recorder Depth (Inside) 3579 ft. Recorder Number 5951 Cap. 5000 P.S.I.  
Bottom Recorder Depth (Outside) 3580 ft. Recorder Number 5586 Cap. 5000 P.S.I.  
Below Straddle Recorder Depth \_\_\_\_\_ ft. Recorder Number \_\_\_\_\_ Cap. \_\_\_\_\_ P.S.I.

Mud Type CHEMICAL Viscosity 38 Drill Collar Length 87 ft. I.D. 2 1/4 in.  
Weight 9.1 Water Loss 6.4 cc. Weight Pipe Length 0 ft. I.D. 2 7/8 in.  
Chlorides 47,000 P.P.M. Drill Pipe Length 3,462 ft. I.D. 3 1/2 in.  
Jars: Make STERLING Serial Number 5 J,SJ, 8" pkrs Test Tool Length 28 ft. Tool Size 3 1/2-IF in.  
Did Well Flow? ----- Reversed Out ----- Anchor Length 42 ft. Size 4 1/2-FH in.  
Main Hole Size 7 7/8 Tool Joint Size 4 1/2 XH in. Surface Choke Size 1 in. Bottom Choke Size 5/8 in.

Blow: 1st Open: Initial blow of 4", inreased to 9"  
2nd Open: Weak blow, inreased to 5"

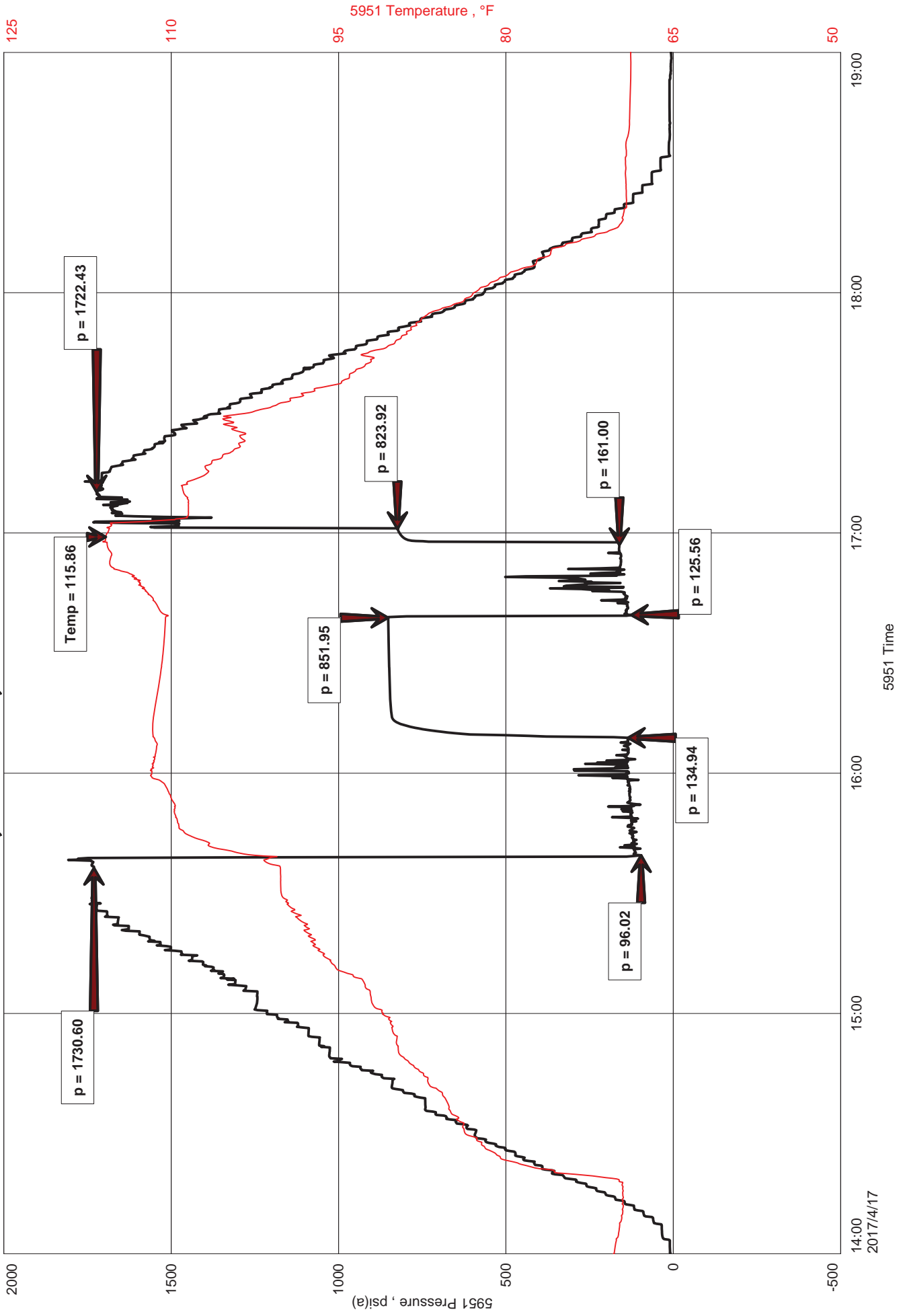
Recovered 95 ft. of SMCW 93% wtr, 7% mud  
Recovered 180 ft. of WCM 20% wtr, 80% mud  
Recovered \_\_\_\_\_ ft. of No Gas In Pipe  
Recovered \_\_\_\_\_ ft. of TOTAL RECOVERED FLUID: 275'

Recovered _____ ft. of _____	Price Job
Recovered _____ ft. of _____	Other Charges
Remarks: <u>CHLORIDES: 99,000 PPM</u>	Insurance
<u>RW: .08 ohm @ 70 F</u>	
<u>PH: 7.0</u>	Total

Time Set Packer(s) 3:39 PM A.M. P.M. Time Started Off Bottom 5:01 PM A.M. P.M. Maximum Temperature 116 F  
Initial Hydrostatic Pressure..... (A) 1731 P.S.I.  
Initial Flow Period..... Minutes 30 (B) 96 P.S.I. to (C) 135 P.S.I.  
Initial Closed In Period..... Minutes 30 (D) 852 P.S.I.  
Final Flow Period..... Minutes 19 (E) 126 P.S.I. to (F) 161 P.S.I.  
Final Closed In Period..... Minutes 3 (G) 824 P.S.I.  
Final Hydrostatic Pressure..... (H) 1722 P.S.I.

Diamond Testing shall not be liable for damages of any kind to the property or personnel of the one for whom a test is made or for any loss suffered or sustained, directly or indirectly, through the use of its equipment, or its statement or opinion concerning the result of any test. Tools lost or damaged in the hole shall be paid for at cost by the party for whom the test is made.

# SWOB #1, DST #2, REAGAN 3577'-3619'





**DIAMOND TESTING**  
 P.O. Box 157  
 HOISINGTON, KANSAS 67544  
 (800) 542-7313  
**DRILL-STEM TEST TICKET**  
 FILE: SWOB10572

ON LOCATION:	<u>12:00</u>
START RECORDERS:	<u>13:35</u>
STOP RECORDERS:	<u>20:03</u>

Company BLACK STONE PETROLEUM LLC Lease & Well No. SWOB #1  
 Contractor LANDMARK DRILG REG # 6 Charge to BLACK STONE PETROLEUM LLC  
 Elevation 1973' KB Formation REAGAN Effective Pay \_\_\_\_\_ Ft. Ticket No. F477  
 Date 4/17/17 Sec. 26 Twp. 18S Range 16W County RUSH State KS  
 Test Approved By CHRIS LEIKER Diamond Representative JAKE FAHRENBRUCH

Formation Test No. 2 Interval Tested from 3577 ft. to 3619 ft. Total Depth 3619 ft.  
 Packer Depth 3572 8" ft. Size 6 3/4 in. Packer depth \_\_\_\_\_ ft. Size 6 3/4 in.  
 Packer Depth 3577 8" ft. Size 6 3/4 in. Packer depth \_\_\_\_\_ ft. Size 6 3/4 in.

Depth of Selective Zone Set \_\_\_\_\_  
 Top Recorder Depth (Inside) 3579 ft. Recorder Number 5951 Cap. 5000 P.S.I.  
 Bottom Recorder Depth (Outside) 3580 ft. Recorder Number 5586 Cap. 5000 P.S.I.  
 Below Straddle Recorder Depth \_\_\_\_\_ ft. Recorder Number \_\_\_\_\_ Cap. \_\_\_\_\_ P.S.I.

Mud Type CHEMICAL Viscosity 38 Drill Collar Length 87 ft. I.D. 2 1/4 in.  
 Weight 9.1 Water Loss 6.4 cc. Weight Pipe Length \_\_\_\_\_ ft. I.D. 2 7/8 in.  
 Chlorides 47,000 P.P.M. Drill Pipe Length 3462 ft. I.D. 3 1/2 in.  
 Jars: Make STERLING Serial Number 5, J, J, 8" PK'S Test Tool Length 28 ft. Tool Size 3 1/2-IF in.  
 Did Well Flow? \_\_\_\_\_ Reversed Out \_\_\_\_\_ Anchor Length 42 ft. Size 4 1/2-FH in.  
 Main Hole Size 7 7/8 Tool Joint Size 4 1/2 XH in. Surface Choke Size 1 in. Bottom Choke Size 5/8 in.

Blow: 1st Open: TOOL SLID TO BOTTOM 25'. Tool opened while sliding last 4' to bottom. Initial blow of 4" increased to 7" by end of flow. No blowback.  
 2nd Open: Weak blow, increased to 5"

Recovered 95 ft. of SMCW 93" WTR, 7" MUD  
 Recovered 180 ft. of WCM 20" WTR 80" MUD  
 Recovered \_\_\_\_\_ ft. of TOTAL RECOVERED FLUID: 275'  
 Recovered \_\_\_\_\_ ft. of NO GAS IN PIPE

Recovered _____ ft. of <u>CHLORIDES: 99,000 PPM</u>	Price Job
Recovered _____ ft. of <u>RW: .08 @ 70°F PA: 7.0</u>	Other Charges
Remarks: <u>Tool pulled loose @ 40 over string weight, tripped jars.</u>	<u>J, J, 8" PKRS</u>
	<u>48 MRT (GB)</u>
	Total

Time Set Packer(s) 3:39 (P.M.) Time Started Off Bottom 5:01 (P.M.) Maximum Temperature 116 °F  
 Initial Hydrostatic Pressure \_\_\_\_\_ (A) 1731 P.S.I.  
 Initial Flow Period \_\_\_\_\_ Minutes 30 (B) 96 P.S.I. to (C) 135 P.S.I.  
 Initial Closed In Period \_\_\_\_\_ Minutes 30 (D) 852 P.S.I.  
 Final Flow Period \_\_\_\_\_ Minutes 19 (E) 126 P.S.I. to (F) 161 P.S.I.  
 Final Closed In Period \_\_\_\_\_ Minutes 3 (G) 824 P.S.I.  
 Final Hydrostatic Pressure \_\_\_\_\_ (H) 1722 P.S.I.

Diamond Testing shall not be liable for damages of any kind to the property or personnel of the one for whom a test is made or for any loss suffered or sustained, directly or indirectly, through the use of its equipment, or its statement or opinion concerning the result of any test. Tools lost or damaged in the hole shall be paid for at cost by the party for whom the test is made.



# DIAMOND TESTING GENERAL REPORT

**Jake Fahrenbruch, Tester**

Cell: (620) 282-8977 / Office: (800) 542-7313



## TEST INFORMATION

<b>Well Name</b>	SWOB #1
<b>Company Name</b>	Black Stone Petroleum LLC
<b>Formation</b>	DST #2, Reagan 3577'-3619'
<b>Test Type</b>	Bottom-Hole w/Jars, S Joint, 8" Packers
<b>Surface Location</b>	Sec 26-18s-16w-Rush Co.-KS
<b>KB Elevation (SL)</b>	1973.000
<b>Gauge Name</b>	5951
<b>Start Test Date</b>	2017/04/17
<b>Start Test Time</b>	13:35:00
<b>Final Test Date</b>	2017/04/17
<b>Final Test Time</b>	20:03:00
<b>Job Number</b>	F477
<b>Contact</b>	Chris Leiker
<b>Site Contact</b>	Bob Bayer

## TEST RESULTS

Initial flow, tool slid 25' to bottom. Tool opened while sliding the last 4' to bottom.  
 Initial blow of 4" increased to 9".  
 Final flow, weak blow increased to 5".

### TOTAL RECOVERED FLUID: 275'

- 95' SWCM 93% wtr, 7% mud
- 180' WCM 20% wtr, 80% mud
- No Gas In Pipe
- Chlorides: 99,000 PPM
- RW: .08 ohm @ 70 F
- PH: 7.0

## SWOB #1, DST #2, REAGAN 3577'-3619'

