



TRILOBITE TESTING, INC.

DRILL STEM TEST REPORT

Vincent Oil Corporation
 200 W Douglas Ave #725
 Wichita, KS 67202
 ATTN: Tom Dudgeon

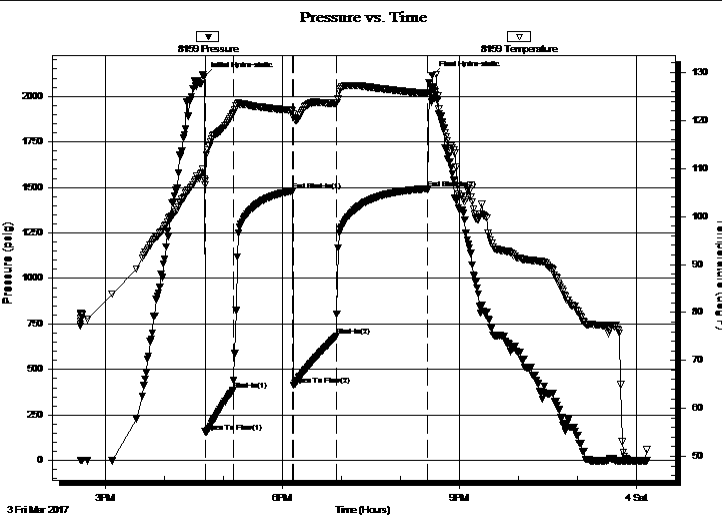
14-28S-8W Kingman
Fairchild 2-14
 Job Ticket: 63570 **DST#: 4**
 Test Start: 2017.03.03 @ 14:35:02

GENERAL INFORMATION:

Formation: **Viola/Simpson**
 Deviated: No Whipstock: ft (KB)
 Test Type: Conventional Bottom Hole (Reset)
 Time Tool Opened: 16:41:32
 Tester: Leal Cason
 Time Test Ended: 00:10:47
 Unit No: 74
 Interval: **4235.00 ft (KB) To 4440.00 ft (KB) (TVD)**
 Reference Elevations: 1617.00 ft (KB)
 Total Depth: 4440.00 ft (KB) (TVD)
 1610.00 ft (CF)
 Hole Diameter: 7.88 inches Hole Condition: Good
 KB to GR/CF: 7.00 ft

Serial #: 8159 **Inside**
 Press@RunDepth: 682.71 psig @ 4236.00 ft (KB) Capacity: 8000.00 psig
 Start Date: 2017.03.03 End Date: 2017.03.04 Last Calib.: 2017.03.04
 Start Time: 14:35:03 End Time: 00:10:47 Time On Btm: 2017.03.03 @ 16:40:32
 Time Off Btm: 2017.03.03 @ 20:32:17

TEST COMMENT: IF: Strong Blow , BOB in 90 seconds
 IS: Weak Surface Blow Back, Died Off
 FF: Strong Blow , BOB in 2 minutes, GTS in 12 minutes, Caught Sample, TSTM
 FS: Blow Back Built to BOB in 5 minutes



PRESSURE SUMMARY

Time (Min.)	Pressure (psig)	Temp (deg F)	Annotation
0	2110.34	107.75	Initial Hydro-static
1	157.88	106.62	Open To Flow (1)
30	384.57	121.41	Shut-In(1)
90	1481.48	122.11	End Shut-In(1)
91	413.16	121.35	Open To Flow (2)
135	682.71	123.63	Shut-In(2)
228	1493.31	125.58	End Shut-In(2)
232	2112.54	124.73	Final Hydro-static

Recovery

Length (ft)	Description	Volume (bbl)
0.00	2513 GIP	0.00
1071.00	GMCO 30%G 20%M 50%O	15.02
378.00	GOCM 10%G 20%O 70%M	5.30
252.00	GCM 20%G 80%M	3.53

* Recovery from multiple tests

Gas Rates

	Choke (inches)	Pressure (psig)	Gas Rate (Mcf/d)



**TRILOBITE
TESTING, INC.**

DRILL STEM TEST REPORT

FLUID SUMMARY

Vincent Oil Corporation
200 W Douglas Ave #725
Wichita, KS 67202
ATTN: Tom Dudgeon

14-28S-8W Kingman
Fairchild 2-14
Job Ticket: 63570 **DST#: 4**
Test Start: 2017.03.03 @ 14:35:02

Mud and Cushion Information

Mud Type: Gel Chem	Cushion Type:	Oil API:	deg API
Mud Weight: 9.00 lb/gal	Cushion Length: ft	Water Salinity:	ppm
Viscosity: 43.00 sec/qt	Cushion Volume: bbl		
Water Loss: 9.57 in ³	Gas Cushion Type:		
Resistivity: ohm.m	Gas Cushion Pressure: psig		
Salinity: 4000.00 ppm			
Filter Cake: 0.02 inches			

Recovery Information

Recovery Table

Length ft	Description	Volume bbl
0.00	2513 GIP	0.000
1071.00	GMCO 30%G 20%M 50%O	15.023
378.00	GOCM 10%G 20%O 70%M	5.302
252.00	GCM 20%G 80%M	3.535

Total Length: 1701.00 ft Total Volume: 23.860 bbl
Num Fluid Samples: 0 Num Gas Bombs: 0 Serial #:
Laboratory Name: Laboratory Location:
Recovery Comments:

Serial #: 8159

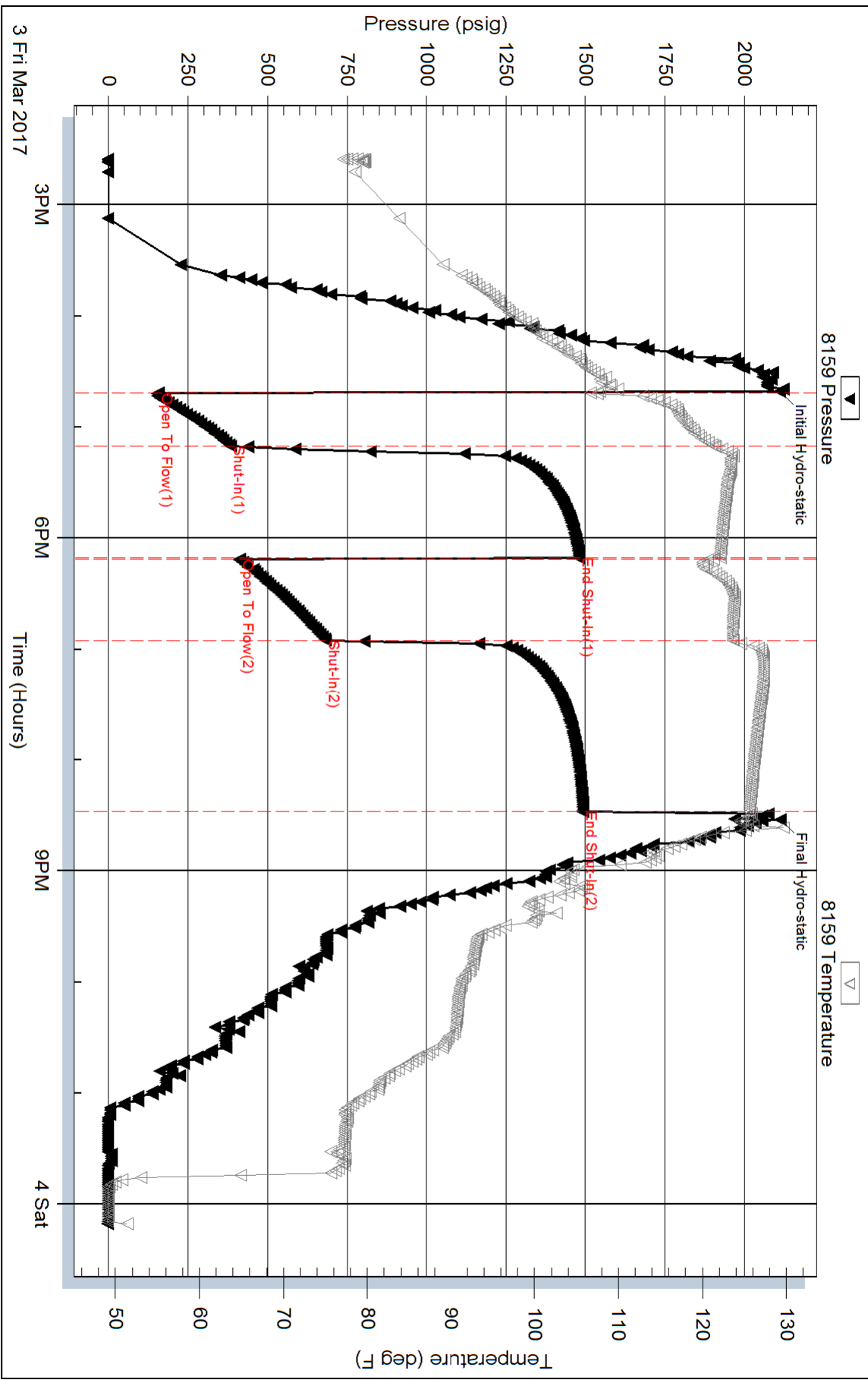
Inside

Vincent Oil Corporation

Fairchild 2-14

DST Test Number: 4

Pressure vs. Time

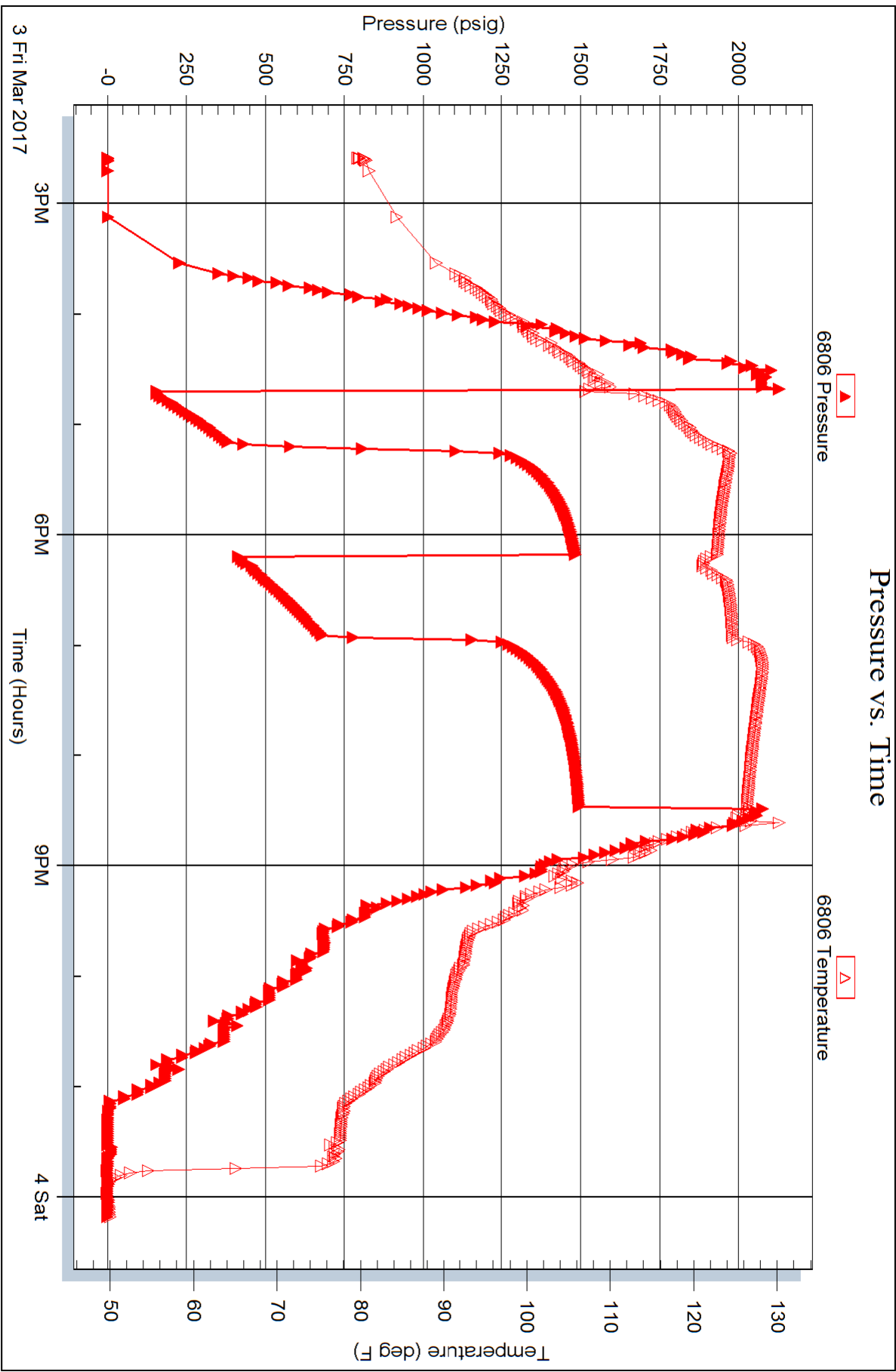


Serial #: 6806

Outside Vincent Oil Corporation

Fairchild 2-14

DST Test Number: 4



Trilobite Testing, Inc

Ref. No: 63570

Printed: 2017.03.04 @ 07:36:03