



TRILOBITE TESTING, INC.

DRILL STEM TEST REPORT

Coachman Energy Oper Co LLC

35 1s 35w Rawlins KS

1725 17th St Ste 410
Denver CO 80202

Skolout 1 35 1 35

Job Ticket: 64029

DST#: 1

ATTN: Bruce Ard

Test Start: 2017.06.05 @ 20:00:00

GENERAL INFORMATION:

Formation: **LKC " A "**

Deviated: No Whipstock: ft (KB)

Time Tool Opened: 22:35:30

Time Test Ended: 05:22:00

Test Type: Conventional Bottom Hole (Initial)

Tester: Jim Svaty

Unit No: 76

Interval: 4111.00 ft (KB) To 4147.00 ft (KB) (TVD)

Reference Elevations: 3225.00 ft (KB)

Total Depth: 4147.00 ft (KB) (TVD)

3216.00 ft (CF)

Hole Diameter: 7.88 inches Hole Condition: Fair

KB to GR/CF: 9.00 ft

Serial #: 6668

Inside

Press@RunDepth: 27.52 psig @ 4114.00 ft (KB)

Capacity: 8000.00 psig

Start Date: 2017.06.05

End Date:

2017.06.06

Last Calib.:

2017.06.06

Start Time:

20:00:01

End Time:

05:22:00

Time On Btm:

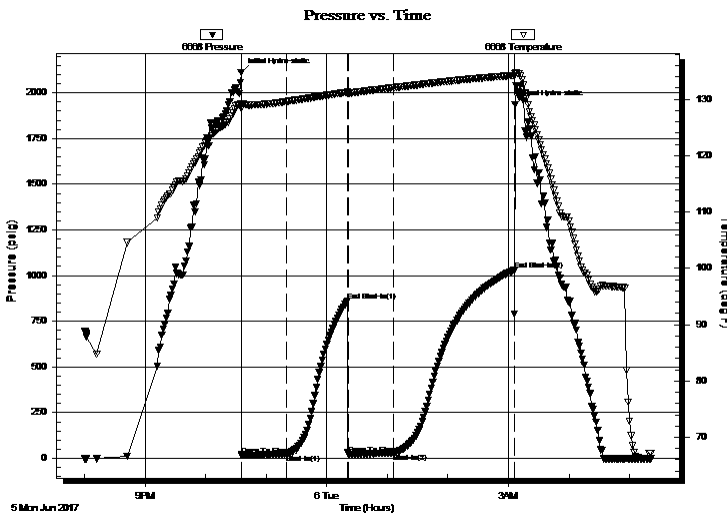
2017.06.05 @ 22:35:00

Time Off Btm:

2017.06.06 @ 03:06:30

TEST COMMENT: 45-IFP- Surface Blow Building to 3in.
60-ISIP- No Blow
45-FFP- Surface Blow in 4 1/2min. Building to 1 1/4in.
120-FSIP- No Blow

PRESSURE SUMMARY



Time (Min.)	Pressure (psig)	Temp (deg F)	Annotation
0	2111.54	129.21	Initial Hydro-static
1	18.58	128.36	Open To Flow (1)
46	22.97	129.61	Shut-In(1)
106	862.81	131.24	End Shut-In(1)
107	23.09	131.00	Open To Flow (2)
151	27.52	132.03	Shut-In(2)
271	1028.95	134.22	End Shut-In(2)
272	1935.28	134.58	Final Hydro-static

Recovery

Length (ft)	Description	Volume (bbl)
31.00	OCM 45% o 55% m	0.43
5.00	CO 100%	0.07

Gas Rates

	Choke (inches)	Pressure (psig)	Gas Rate (Mcf/d)



**TRILOBITE
TESTING, INC.**

DRILL STEM TEST REPORT

FLUID SUMMARY

Coachman Energy Oper Co LLC

35 1s 35w Rawlins KS

1725 17th St Ste 410
Denver CO 80202

Skolout 1 35 1 35

Job Ticket: 64029

DST#: 1

ATTN: Bruce Ard

Test Start: 2017.06.05 @ 20:00:00

Mud and Cushion Information

Mud Type: Gel Chem

Cushion Type:

Oil API:

25 deg API

Mud Weight: 9.00 lb/gal

Cushion Length:

ft

Water Salinity:

ppm

Viscosity: 62.00 sec/qt

Cushion Volume:

bbbl

Water Loss: 6.80 in³

Gas Cushion Type:

Resistivity: ohm.m

Gas Cushion Pressure:

psig

Salinity: 600.00 ppm

Filter Cake: 2.00 inches

Recovery Information

Recovery Table

Length ft	Description	Volume bbbl
31.00	OCM 45%o 55%m	0.435
5.00	CO 100%	0.070

Total Length: 36.00 ft Total Volume: 0.505 bbl

Num Fluid Samples: 0

Num Gas Bombs: 0

Serial #:

Laboratory Name:

Laboratory Location:

Recovery Comments:

Pressure vs. Time

