



**TRILOBITE TESTING, INC.**

# DRILL STEM TEST REPORT

Coachman Energy Oper Co LLC

**35 1s 35w Rawlins KS**

1725 17th St Ste 410  
Denver CO 80202

**Skolout 1 35 1 35**

Job Ticket: 64031

**DST#: 3**

ATTN: Bruce Ard

Test Start: 2017.06.07 @ 18:30:00

## GENERAL INFORMATION:

Formation: **Lan " C & D "**

Deviated: No Whipstock: ft (KB)

Time Tool Opened: 21:04:30

Time Test Ended: 04:10:00

Test Type: Conventional Bottom Hole (Reset)

Tester: Jim Svaty

Unit No: 76

**Interval: 4212.00 ft (KB) To 4293.00 ft (KB) (TVD)**

Reference Elevations: 3225.00 ft (KB)

Total Depth: 4293.00 ft (KB) (TVD)

3216.00 ft (CF)

Hole Diameter: 7.88 inches Hole Condition: Fair

KB to GR/CF: 9.00 ft

**Serial #: 8372 Outside**

Press@RunDepth: 73.44 psig @ 4223.00 ft (KB)

Capacity: 8000.00 psig

Start Date: 2017.06.07

End Date:

2017.06.08

Last Calib.:

2017.06.08

Start Time: 18:30:01

End Time:

04:09:18

Time On Btm:

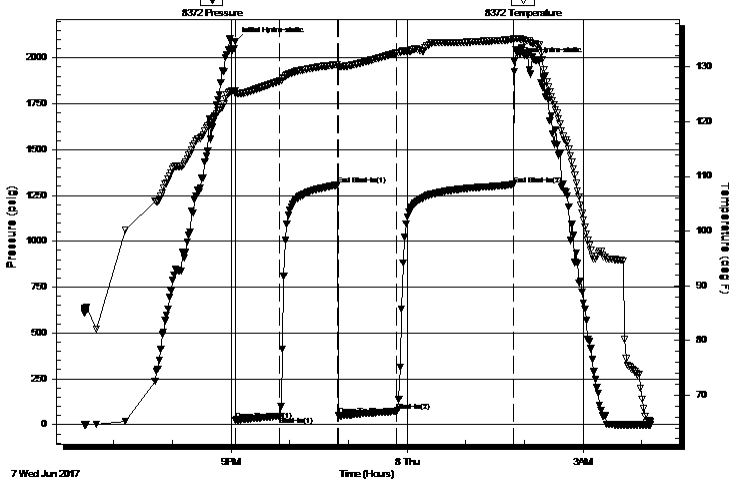
2017.06.07 @ 21:04:00

Time Off Btm:

2017.06.08 @ 01:49:30

**TEST COMMENT:** 45-IFP- Surface Blow Building to 3 1/4in.  
60-ISIP- No Blow  
60-FFP- Weak Surface Blow in 30min. Building to 1 1/4in.  
120-FSIP- No Blow

Pressure vs. Time



## PRESSURE SUMMARY

Time (Min.)	Pressure (psig)	Temp (deg F)	Annotation
0	2088.50	125.68	Initial Hydro-static
1	25.28	125.13	Open To Flow (1)
46	46.34	127.41	Shut-In(1)
105	1308.28	130.44	End Shut-In(1)
106	49.96	129.80	Open To Flow (2)
166	73.44	132.57	Shut-In(2)
285	1309.79	134.99	End Shut-In(2)
286	1981.77	135.22	Final Hydro-static

## Recovery

Length (ft)	Description	Volume (bbl)
102.00	Oil Speck Mud 3%o 97%m	1.43

## Gas Rates

	Choke (inches)	Pressure (psig)	Gas Rate (Mcf/d)

\* Recovery from multiple tests



**TRILOBITE TESTING, INC.**

# DRILL STEM TEST REPORT

Coachman Energy Oper Co LLC

**35 1s 35w Rawlins KS**

1725 17th St Ste 410  
Denver CO 80202

**Skolout 1 35 1 35**

Job Ticket: 64031

**DST#: 3**

ATTN: Bruce Ard

Test Start: 2017.06.07 @ 18:30:00

## GENERAL INFORMATION:

Formation: **Lan " C & D "**

Deviated: No Whipstock: ft (KB)

Time Tool Opened: 21:04:30

Time Test Ended: 04:10:00

Test Type: Conventional Bottom Hole (Reset)

Tester: Jim Svaty

Unit No: 76

Interval: **4212.00 ft (KB) To 4293.00 ft (KB) (TVD)**

Total Depth: 4293.00 ft (KB) (TVD)

Hole Diameter: 7.88 inches Hole Condition: Fair

Reference Elevations: 3225.00 ft (KB)

3216.00 ft (CF)

KB to GR/CF: 9.00 ft

**Serial #: 6668 Inside**

Press@RunDepth: psig @ 4223.00 ft (KB)

Start Date: 2017.06.07

End Date: 2017.06.08

Start Time: 18:30:01

End Time: 04:10:00

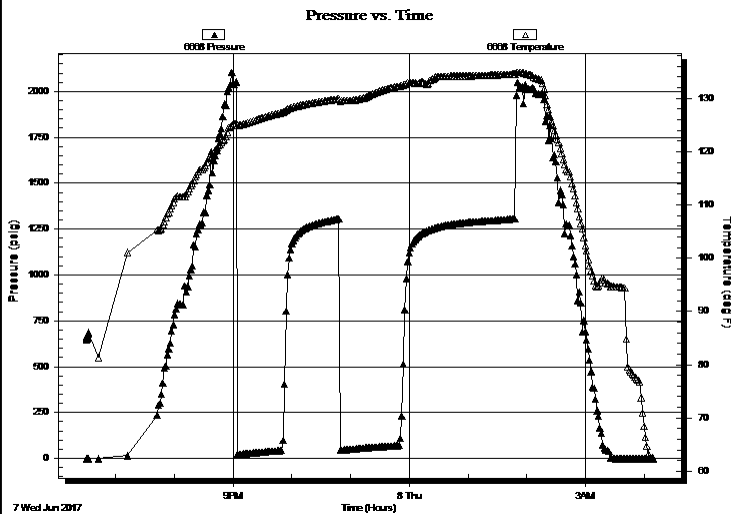
Capacity: 8000.00 psig

Last Calib.: 2017.06.08

Time On Btm:

Time Off Btm:

**TEST COMMENT:** 45-IFP- Surface Blow Building to 3 1/4in.  
60-ISIP- No Blow  
60-FFP- Weak Surface Blow in 30min. Building to 1 1/4in.  
120-FSIP- No Blow



## PRESSURE SUMMARY

Time (Min.)	Pressure (psig)	Temp (deg F)	Annotation

## Recovery

Length (ft)	Description	Volume (bbl)
102.00	Oil Speck Mud 3%o 97%m	1.43

## Gas Rates

Choke (inches)	Pressure (psig)	Gas Rate (Mcf/d)

\* Recovery from multiple tests



**TRILOBITE  
TESTING, INC.**

# DRILL STEM TEST REPORT

**FLUID SUMMARY**

Coachman Energy Oper Co LLC

**35 1s 35w Rawlins KS**

1725 17th St Ste 410  
Denver CO 80202

**Skolout 1 35 1 35**

Job Ticket: 64031

**DST#: 3**

ATTN: Bruce Ard

Test Start: 2017.06.07 @ 18:30:00

## Mud and Cushion Information

Mud Type: Gel Chem

Cushion Type:

Oil API:

deg API

Mud Weight: 9.00 lb/gal

Cushion Length:

ft

Water Salinity:

ppm

Viscosity: 75.00 sec/qt

Cushion Volume:

bbbl

Water Loss: 6.40 in<sup>3</sup>

Gas Cushion Type:

Resistivity: ohm.m

Gas Cushion Pressure:

psig

Salinity: 1000.00 ppm

Filter Cake: 4.00 inches

## Recovery Information

Recovery Table

Length ft	Description	Volume bbl
102.00	Oil Speck Mud 3%o 97%m	1.431

Total Length: 102.00 ft      Total Volume: 1.431 bbl

Num Fluid Samples: 0

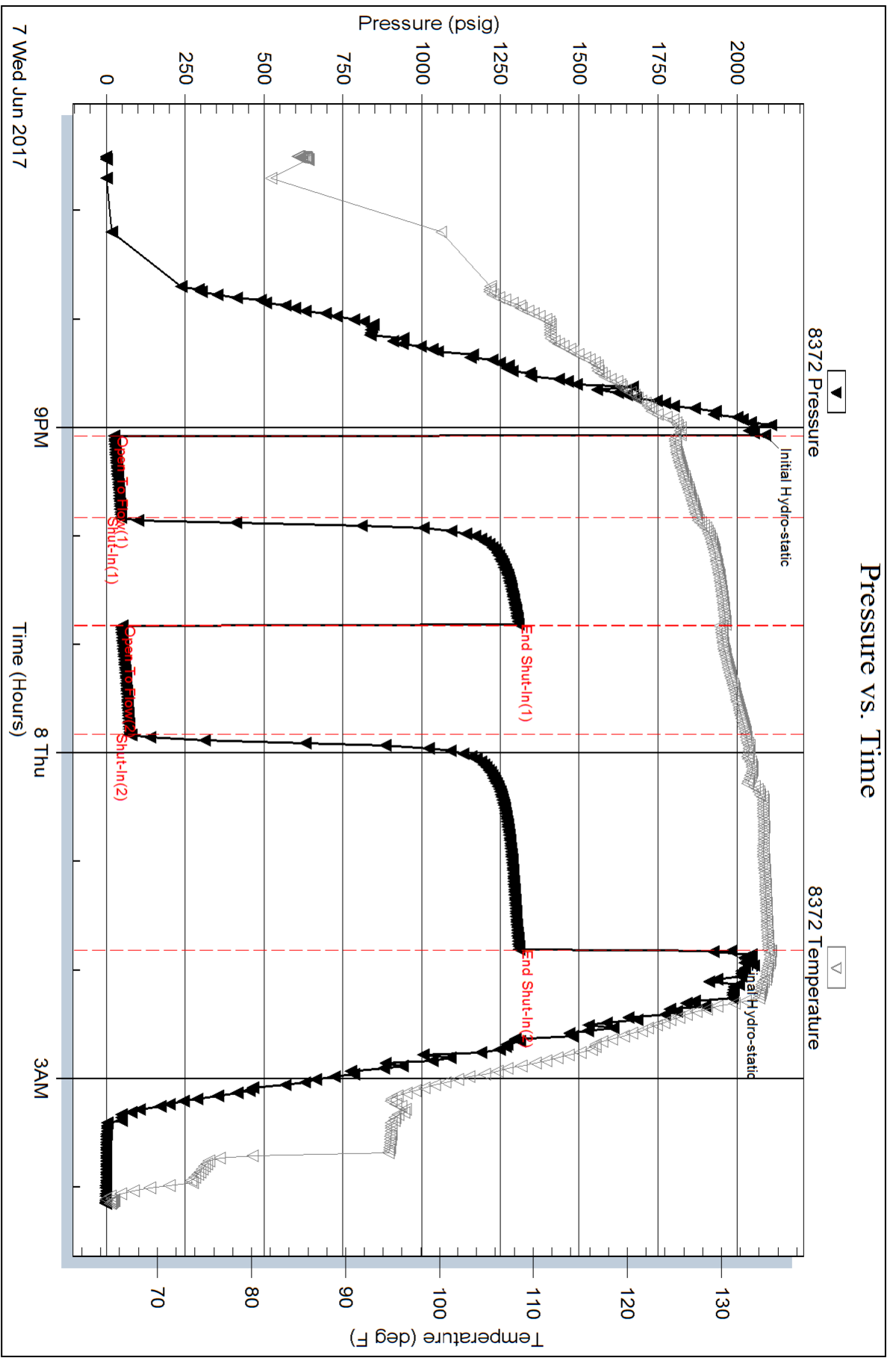
Num Gas Bombs: 0

Serial #:

Laboratory Name:

Laboratory Location:

Recovery Comments:



Serial #: 6668

Inside

Coachman Energy Oper Co LLC

Skolout 1 35 1 35

DST Test Number: 3

