



TRILOBITE TESTING, INC.

DRILL STEM TEST REPORT

Russell Oil, Inc.
 PO Box 8050
 Edmond, OK 73083
 ATTN: Kitt Noah

26/15s/35w Logan KS
Edwards Trust E#26-1
 Job Ticket: 65444 **DST#: 1**
 Test Start: 2017.04.28 @ 19:10:00

GENERAL INFORMATION:

Formation: **Toronto**
 Deviated: No Whipstock: ft (KB)
 Time Tool Opened: 20:46:30
 Time Test Ended: 01:21:15
 Interval: **3890.00 ft (KB) To 3932.00 ft (KB) (TVD)**
 Total Depth: 3932.00 ft (KB) (TVD)
 Hole Diameter: 7.88 inches Hole Condition: Poor
 Test Type: Conventional Bottom Hole (Initial)
 Tester: James Winder
 Unit No: 83
 Reference Elevations: 3112.00 ft (KB)
 3107.00 ft (CF)
 KB to GR/CF: 5.00 ft

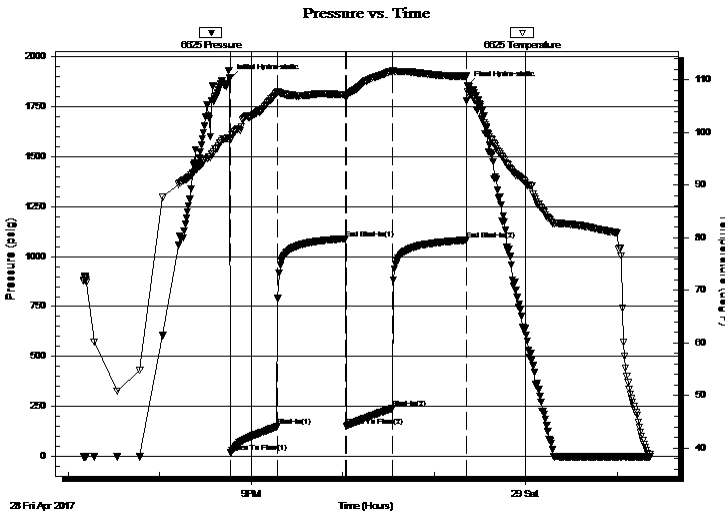
Serial #: 6625

Inside

Press@RunDepth: 240.40 psig @ 3891.00 ft (KB) Capacity: 8000.00 psig
 Start Date: 2017.04.28 End Date: 2017.04.29 Last Calib.: 2017.04.29
 Start Time: 19:10:05 End Time: 01:21:14 Time On Btm: 2017.04.28 @ 20:46:15
 Time Off Btm: 2017.04.28 @ 23:22:00

TEST COMMENT: 30 - IF: Blow built to BOB (11") at 13 3/4 min.
 45 - IS: No blow back
 30 - FF: Blow built to BOB at 15 3/4 min.
 45 - FS: No blow back

PRESSURE SUMMARY



Time (Min.)	Pressure (psig)	Temp (deg F)	Annotation
0	1892.25	99.00	Initial Hydro-static
1	18.94	98.70	Open To Flow (1)
31	149.13	107.63	Shut-In(1)
76	1089.41	107.13	End Shut-In(1)
76	150.96	106.99	Open To Flow (2)
107	240.40	111.70	Shut-In(2)
155	1082.08	110.61	End Shut-In(2)
156	1854.73	107.83	Final Hydro-static

Recovery

Length (ft)	Description	Volume (bbl)
305.00	MCW 88%w, 12%m	3.20
190.00	WCM 61%m, 39%w	2.67
5.00	Mud 100%	0.07

Gas Rates

Choke (inches)	Pressure (psig)	Gas Rate (Mcf/d)



TRILOBITE TESTING, INC.

DRILL STEM TEST REPORT

Russell Oil, Inc.
 PO Box 8050
 Edmond, OK 73083
 ATTN: Kitt Noah

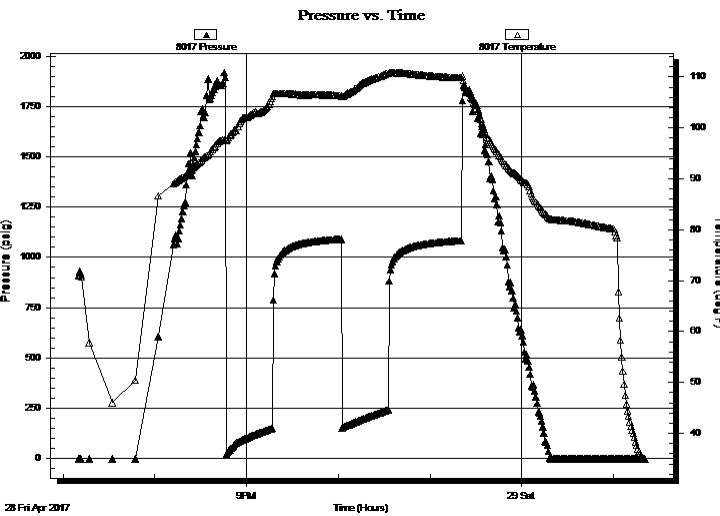
26/15s/35w Logan KS
Edwards Trust E#26-1
 Job Ticket: 65444 **DST#: 1**
 Test Start: 2017.04.28 @ 19:10:00

GENERAL INFORMATION:

Formation: **Toronto**
 Deviated: No Whipstock: ft (KB)
 Time Tool Opened: 20:46:30
 Time Test Ended: 01:21:15
Interval: 3890.00 ft (KB) To 3932.00 ft (KB) (TVD)
 Total Depth: 3932.00 ft (KB) (TVD)
 Hole Diameter: 7.88 inches Hole Condition: Poor
 Test Type: Conventional Bottom Hole (Initial)
 Tester: James Winder
 Unit No: 83
 Reference Elevations: 3112.00 ft (KB)
 3107.00 ft (CF)
 KB to GR/CF: 5.00 ft

Serial #: 8017 Outside
 Press@RunDepth: psig @ 3891.00 ft (KB) Capacity: 8000.00 psig
 Start Date: 2017.04.28 End Date: 2017.04.29 Last Calib.: 2017.04.29
 Start Time: 19:10:05 End Time: 01:20:59 Time On Btm:
 Time Off Btm:

TEST COMMENT: 30 - IF: Blow built to BOB (11") at 13 3/4 min.
 45 - IS: No blow back
 30 - FF: Blow built to BOB at 15 3/4 min.
 45 - FS: No blow back



PRESSURE SUMMARY

Time (Min.)	Pressure (psig)	Temp (deg F)	Annotation

Recovery

Length (ft)	Description	Volume (bbl)
305.00	MCW 88%w, 12%m	3.20
190.00	WCM 61%m, 39%w	2.67
5.00	Mud 100%	0.07

Gas Rates

	Choke (inches)	Pressure (psig)	Gas Rate (Mcf/d)



**TRILOBITE
TESTING, INC.**

DRILL STEM TEST REPORT

FLUID SUMMARY

Russell Oil, Inc.

26/15s/35w Logan KS

PO Box 8050
Edmond, OK 73083

Edwards Trust E#26-1

Job Ticket: 65444 **DST#: 1**

ATTN: Kitt Noah

Test Start: 2017.04.28 @ 19:10:00

Mud and Cushion Information

Mud Type: Gel Chem	Cushion Type:	Oil API:	deg API
Mud Weight: 9.00 lb/gal	Cushion Length: ft	Water Salinity:	17000 ppm
Viscosity: 68.00 sec/qt	Cushion Volume: bbl		
Water Loss: 6.79 in ³	Gas Cushion Type:		
Resistivity: ohm.m	Gas Cushion Pressure: psig		
Salinity: 3000.00 ppm			
Filter Cake: 1.00 inches			

Recovery Information

Recovery Table

Length ft	Description	Volume bbl
305.00	MCW 88%w, 12%m	3.203
190.00	WCM 61%m, 39%w	2.665
5.00	Mud 100%	0.070

Total Length: 500.00 ft Total Volume: 5.938 bbl

Num Fluid Samples: 0 Num Gas Bombs: 0 Serial #:

Laboratory Name: Laboratory Location:

Recovery Comments: RW = .485 ohms @ 55.1 deg F
Chlorides = 17,000 ppm

